

LEGEND:

- DOMESTIC/INDUSTRIAL WATER STATION
- DUST SUPPRESSION WATER STATION
- DOMESTIC/INDUSTRIAL WATER STATION AND DUST SUPPRESSION WATER STATION
- MILNE INLET TOTE ROAD
- RIVER/STREAM/DRAINAGE
- WATER
- ▭ PROJECT DEVELOPMENT AREA

NOTES:

1. COORDINATE GRID IS IN KILOMETRES.
COORDINATE SYSTEM: NAD 1983 UTM ZONE 17N.

2. BASE MAP/IMAGERY: © ESRI AND DATA (ONLINE) SERVICE LAYERS (2017).
REDLANDS, CA: ENVIRONMENTAL SYSTEM RESEARCH INSTITUTE. ALL RIGHTS RESERVED.

0	07 JUN 24	ISSUED WITH REPORT	RAC	AS	SRA
REV	DATE	DESCRIPTION	DESIGNED	DRAWN	REVIEWED

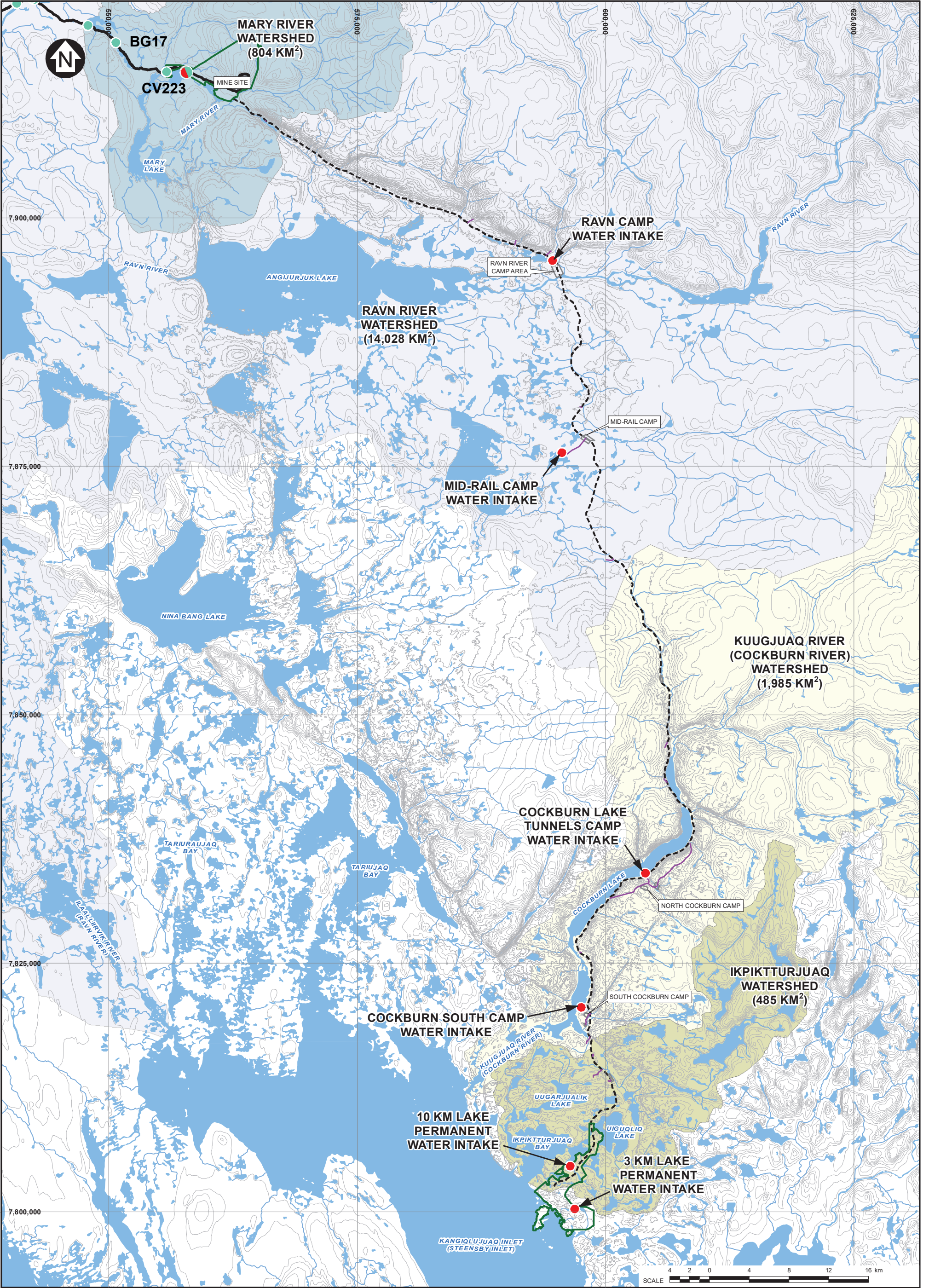
BAFFINLAND IRON MINES CORPORATION

MARY RIVER PROJECT

APPROVED WATER STATIONS
MILNE PORT TO THE MINE

PIA NO.	REF NO.
NB102-181/108	1
FIGURE 5.1	

SAVED: I:\10200181\108\GIS\FIG5.103 R0.mxd; Jun 07, 2024 11:28 AM; asimpson



LEGEND:

- DOMESTIC/INDUSTRIAL WATER STATION
- DUST SUPPRESSION WATER STATION
- DOMESTIC/INDUSTRIAL WATER STATION AND DUST SUPPRESSION WATER STATION
- MILNE INLET TOTE ROAD
- PROPOSED RAIL ALIGNMENT
- RIVER/STREAM/DRAINAGE
- WATER
- PROJECT DEVELOPMENT AREA

NOTES:

1. BASE MAP AND CONTOURS PROVIDED BY EAGLE MAPPING (2008).
2. COORDINATE GRID IS SHOWN IN UTM (NAD83) ZONE 17 AND IS IN METRES.
3. CONTOURS ARE IN METRES. CONTOUR INTERVAL VARIES.
4. RAILWAY ALIGNMENT PROVIDED BY SYSTRA (MAY 1, 2023).
5. CATCHMENT BOUNDARIES PROVIDED BY SYSTRA (MAY 9, 2023).

BAFFINLAND IRON MINES CORPORATION

MARY RIVER PROJECT

**APPROVED WATER STATIONS
MINE TO STEENSBY PORT**

Knight Piésold
CONSULTING

PIA NO. NB102-181/108	REF NO. 1
FIGURE 5.2	
REV 0	

0	07 JUN 24	ISSUED WITH REPORT	RAC DESIGNED	AS DRAWN	SRA REVIEWED
REV	DATE	DESCRIPTION			

SAVED: I:\110200181\108A\GIS\FIG5\B04_R0.mxd - Jun 07, 2024 9:55 AM - asiragon