

#### LEGEND:

- APPROVED WATER STATION
- PROPOSED WATER STATION
- MILNE INLET TOTE ROAD
- PROPOSED NORTH RAILWAY
- POTENTIAL DEVELOPMENT AREA
- CATCHMENT BOUNDARY

#### NOTES:

1. COORDINATE GRID IS IN METRES.  
COORDINATE SYSTEM: NAD 1983 UTM ZONE 17N.
2. BASE MAP IMAGERY: © 2020 DIGITAL GLOBE, INC.

BAFFINLAND IRON MINES CORPORATION

MARY RIVER PROJECT

**WATER STATION  
WS17.4 CATCHMENT**

**KP Knight Piésold  
CONSULTING**

P/A NO.  
NB102-181/65

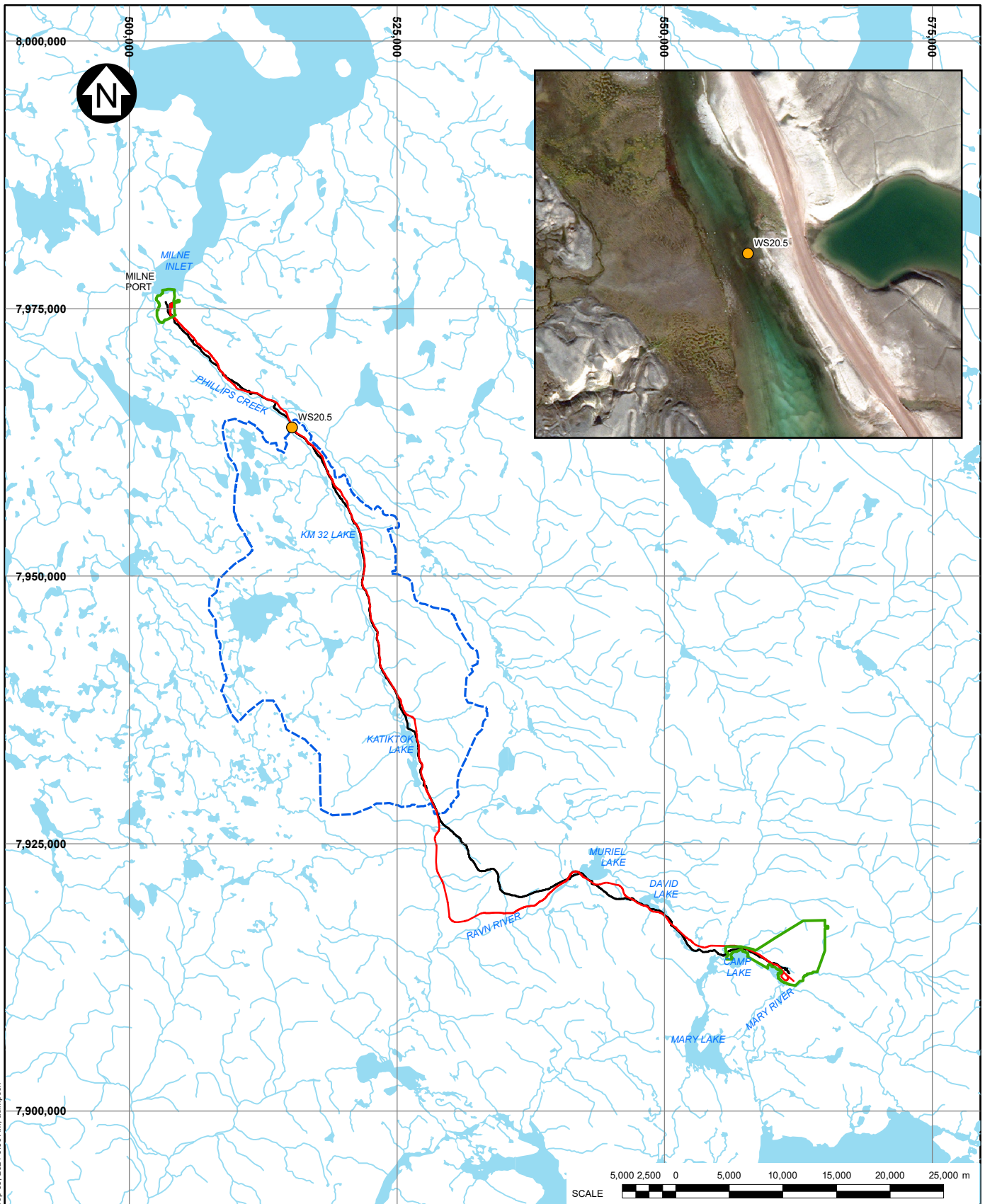
REF NO.  
1

**FIGURE A.4**

REV  
0

SAVED: I:\110200181\65\A\GIS\FigA05.RD.mxd; Sep 03, 2021 9:43 AM; asimpson

REV	DATE	DESCRIPTION	RAC DESIGNED	AS DRAWN	RAC REVIEWED
0	03SEP'21	ISSUED WITH REPORT			



**LEGEND:**

- APPROVED WATER STATION
- PROPOSED WATER STATION
- MILNE INLET TOTE ROAD
- PROPOSED NORTH RAILWAY
- POTENTIAL DEVELOPMENT AREA
- CATCHMENT BOUNDARY

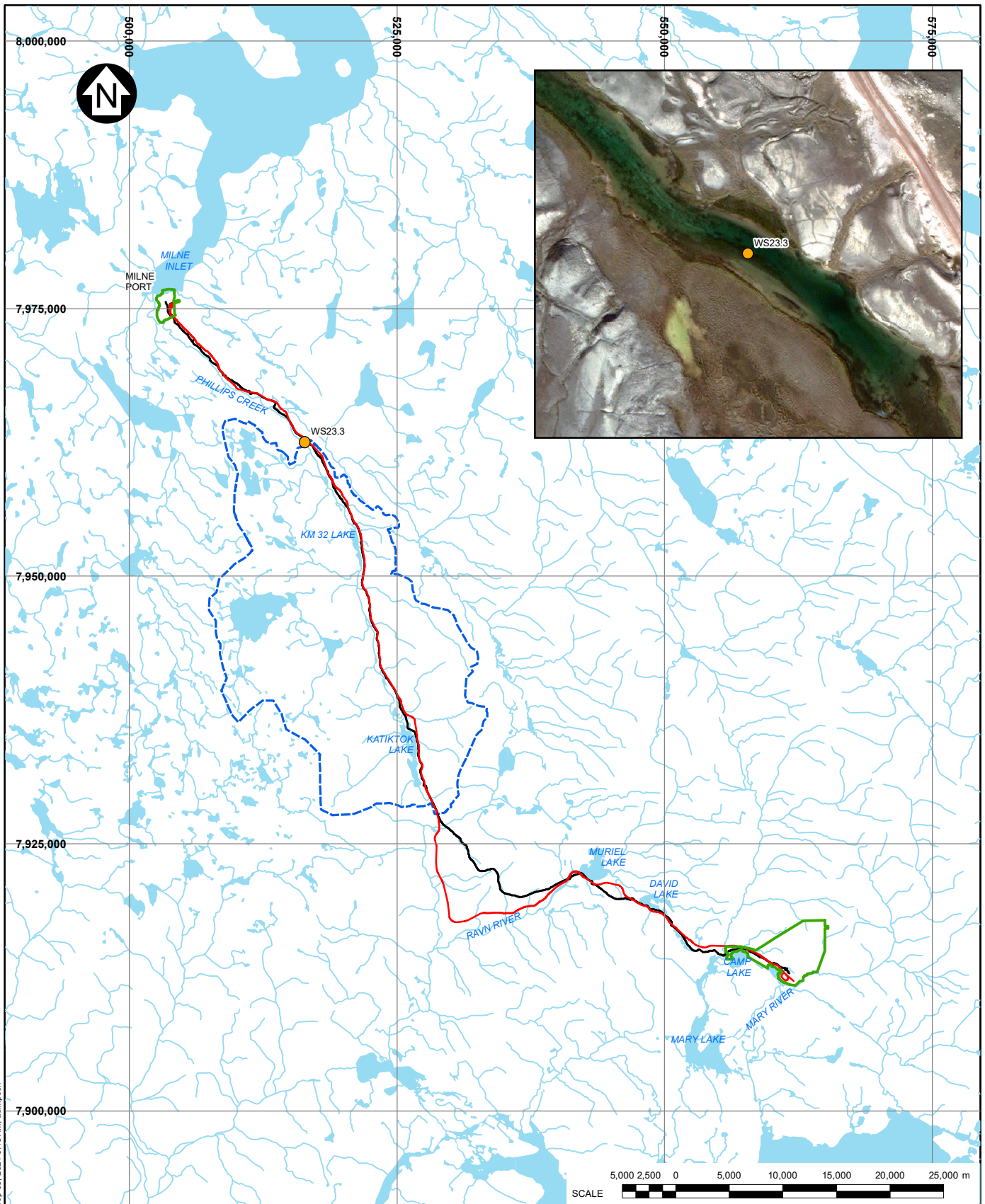
**NOTES:**

- COORDINATE GRID IS IN METRES.  
COORDINATE SYSTEM: NAD 1983 UTM ZONE 17N.
- BASE MAP IMAGERY: c 2020 DIGITAL GLOBE, INC.

BAFFINLAND IRON MINES CORPORATION			
MARY RIVER PROJECT			
WATER STATION WS20.5 CATCHMENT			
		P/A NO. NB102-181/65	REF NO. 1
Knight Piésold CONSULTING		<b>FIGURE A.5</b>	
03SEP'21 ISSUED WITH REPORT	RAC DESIGNED	AS DRAWN	RAC REVIEWED

SAVED: I:\110200181\65\A\GIS\FigA06 RD.mxd: Sep 03, 2021 9:36 AM: asimpson





#### LEGEND:

- APPROVED WATER STATION
- PROPOSED WATER STATION
- MILNE INLET TOTE ROAD
- PROPOSED NORTH RAILWAY
- POTENTIAL DEVELOPMENT AREA
- CATCHMENT BOUNDARY

#### NOTES:

1. COORDINATE GRID IS IN METRES.  
COORDINATE SYSTEM: NAD 1983 UTM ZONE 17N.
2. BASE MAP IMAGERY: c 2020 DIGITAL GLOBE, INC.

BAFFINLAND IRON MINES CORPORATION

MARY RIVER PROJECT

**WATER STATION  
WS23.3 CATCHMENT**

**KP Knight Piésold  
CONSULTING**

P/A NO.  
NB102-181/65

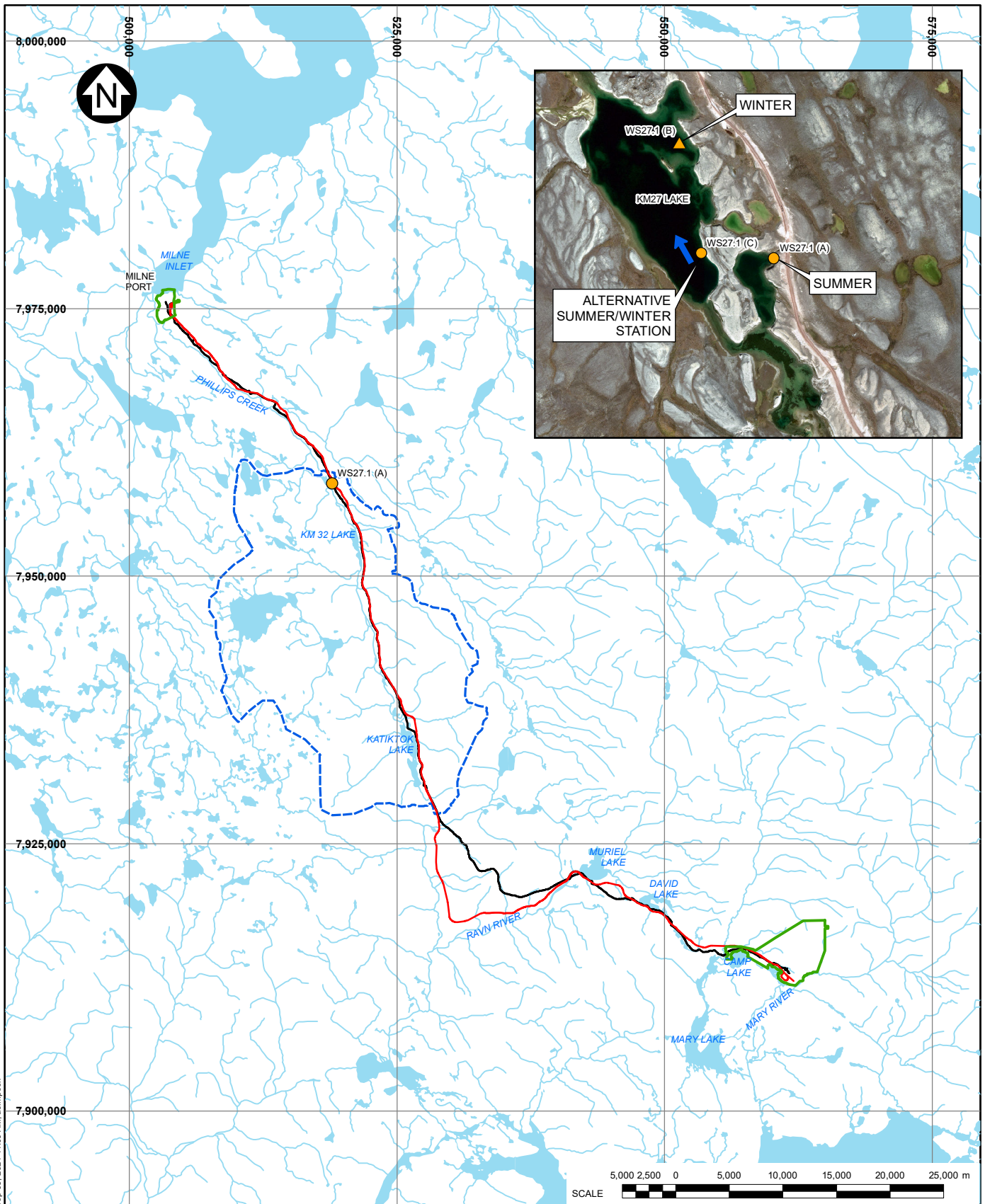
REF NO.  
1

**FIGURE A.6**

REV  
0

SAVED: I:\110200181\65\A\GIS\FigA07.RD.mxd: Sep 03, 2021 9:48 AM: asimpson

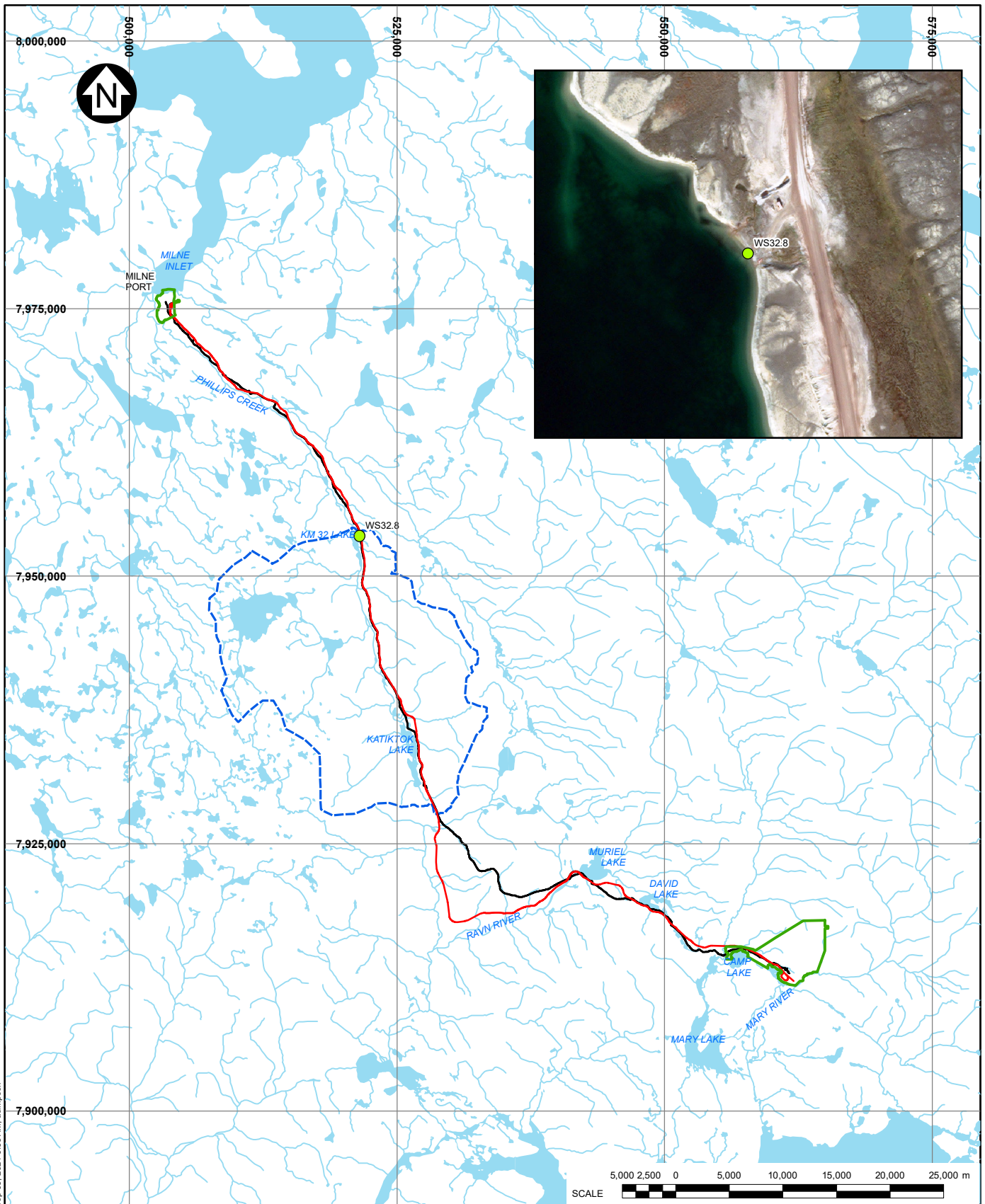
REV	DATE	DESCRIPTION	RAC DESIGNED	AS DRAWN	RAC REVIEWED
0	03SEP'21	ISSUED WITH REPORT			



LEGEND:		NOTES:		
<span style="color: green;">●</span>	APPROVED WATER STATION	1. COORDINATE GRID IS IN METRES.		
<span style="color: orange;">●</span>	PROPOSED WATER STATION (SUMMER)	2. COORDINATE SYSTEM: NAD 1983 UTM ZONE 17N.		
<span style="color: yellow;">●</span>	PROPOSED WATER STATION (WINTER)	3. BASE MAP IMAGERY: © 2020 DIGITAL GLOBE, INC.		
<span style="color: red;">—</span>	MILNE INLET TOTE ROAD	4. A SUMMER WATER WITHDRAWAL LOCATION IS PROPOSED ON A SMALL BUT DEEP POND IMMEDIATELY UPSTREAM KM 27 LAKE.		
<span style="color: blue;">—</span>	PROPOSED NORTH RAILWAY	5. A SEPARATE WINTER WITHDRAWAL LOCATION HAS BEEN IDENTIFIED ON KM27 LAKE WHERE WATER IS SUFFICIENTLY DEEP FOR WITHDRAWALS THROUGH ICE.		
<span style="color: green;">□</span>	POTENTIAL DEVELOPMENT AREA			
<span style="color: blue;">□</span>	CATCHMENT BOUNDARY			
<span style="color: blue;">→</span>	FLOW DIRECTION			
0	03SEP'21	ISSUED WITH REPORT	RAC	AS
REV	DATE	DESCRIPTION	DESIGNED	DRAWN
				REVIEWED

BAFFINLAND IRON MINES CORPORATION	
MARY RIVER PROJECT	
WATER STATION WS27.1 CATCHMENT	
	P/A NO. NB102-181/65
	REF NO. 1
	REV 0
FIGURE A.7	





**LEGEND:**

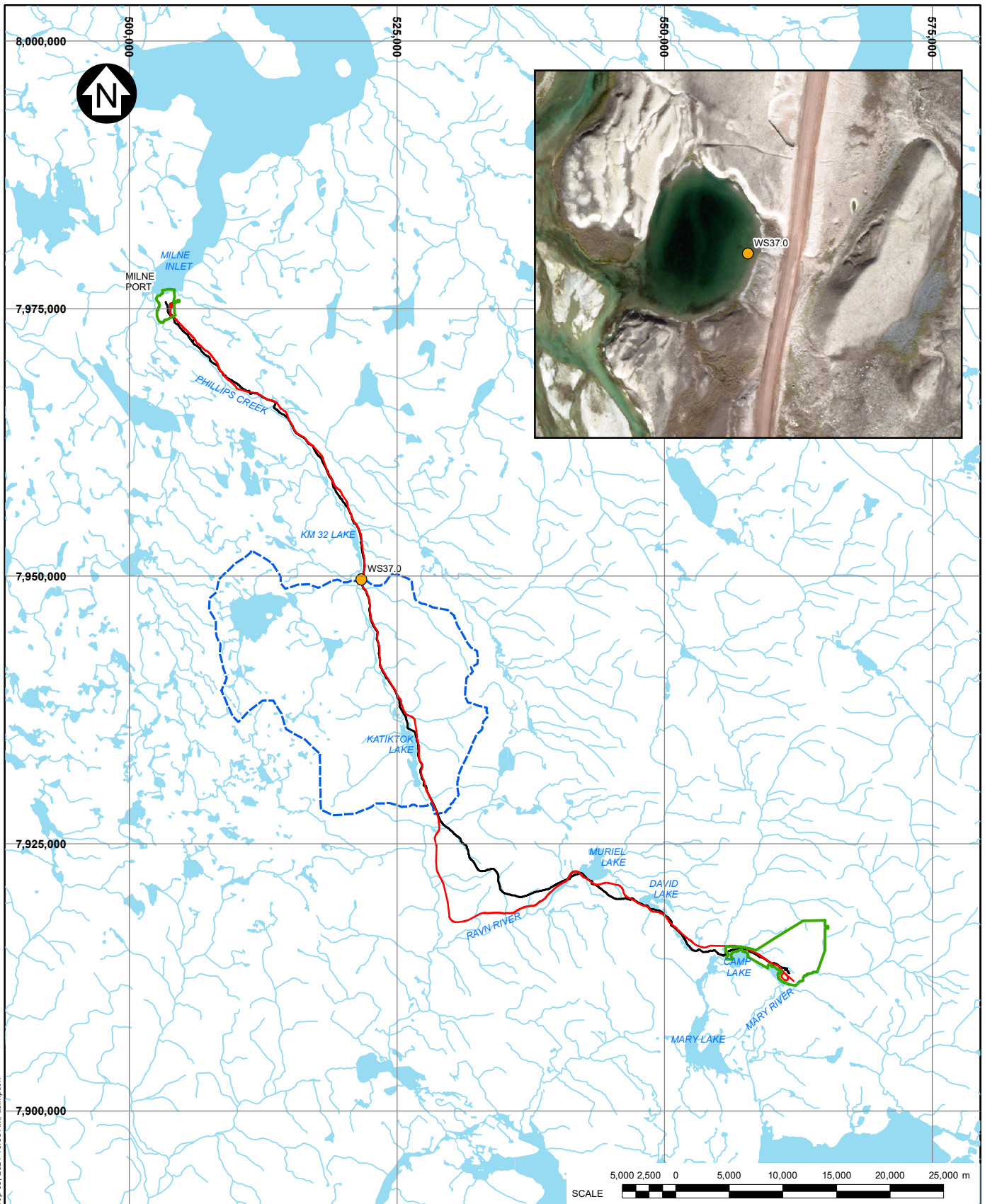
- APPROVED WATER STATION
- PROPOSED WATER STATION
- MILNE INLET TOTE ROAD
- PROPOSED NORTH RAILWAY
- POTENTIAL DEVELOPMENT AREA
- CATCHMENT BOUNDARY

**NOTES:**

- COORDINATE GRID IS IN METRES.  
COORDINATE SYSTEM: NAD 1983 UTM ZONE 17N.
- BASE MAP IMAGERY: c 2020 DIGITAL GLOBE, INC.

BAFFINLAND IRON MINES CORPORATION			
MARY RIVER PROJECT			
WATER STATION WS32.8 CATCHMENT			
		P/A NO. NB102-181/65	REF NO. 1
		<b>FIGURE A.8</b>	
03SEP'21 ISSUED WITH REPORT	RAC DESIGNED	AS DRAWN	RAC REVIEWED

SAVED: I:\110200181\65\A\GIS\FigA09.RD.mxd: Sep 03, 2021 9:53 AM: asimpson



**LEGEND:**

- APPROVED WATER STATION
- PROPOSED WATER STATION
- MILNE INLET TOTE ROAD
- PROPOSED NORTH RAILWAY
- POTENTIAL DEVELOPMENT AREA
- - - CATCHMENT BOUNDARY

**NOTES:**

1. COORDINATE GRID IS IN METRES.  
COORDINATE SYSTEM: NAD 1983 UTM ZONE 17N.
2. BASE MAP IMAGERY: © 2020 DIGITAL GLOBE, INC.

BAFFINLAND IRON MINES CORPORATION

MARY RIVER PROJECT

**WATER STATION  
WS37.0 CATCHMENT**

**KP Knight Piésold  
CONSULTING**

P/A NO.  
NB102-181/65

REF NO.  
1

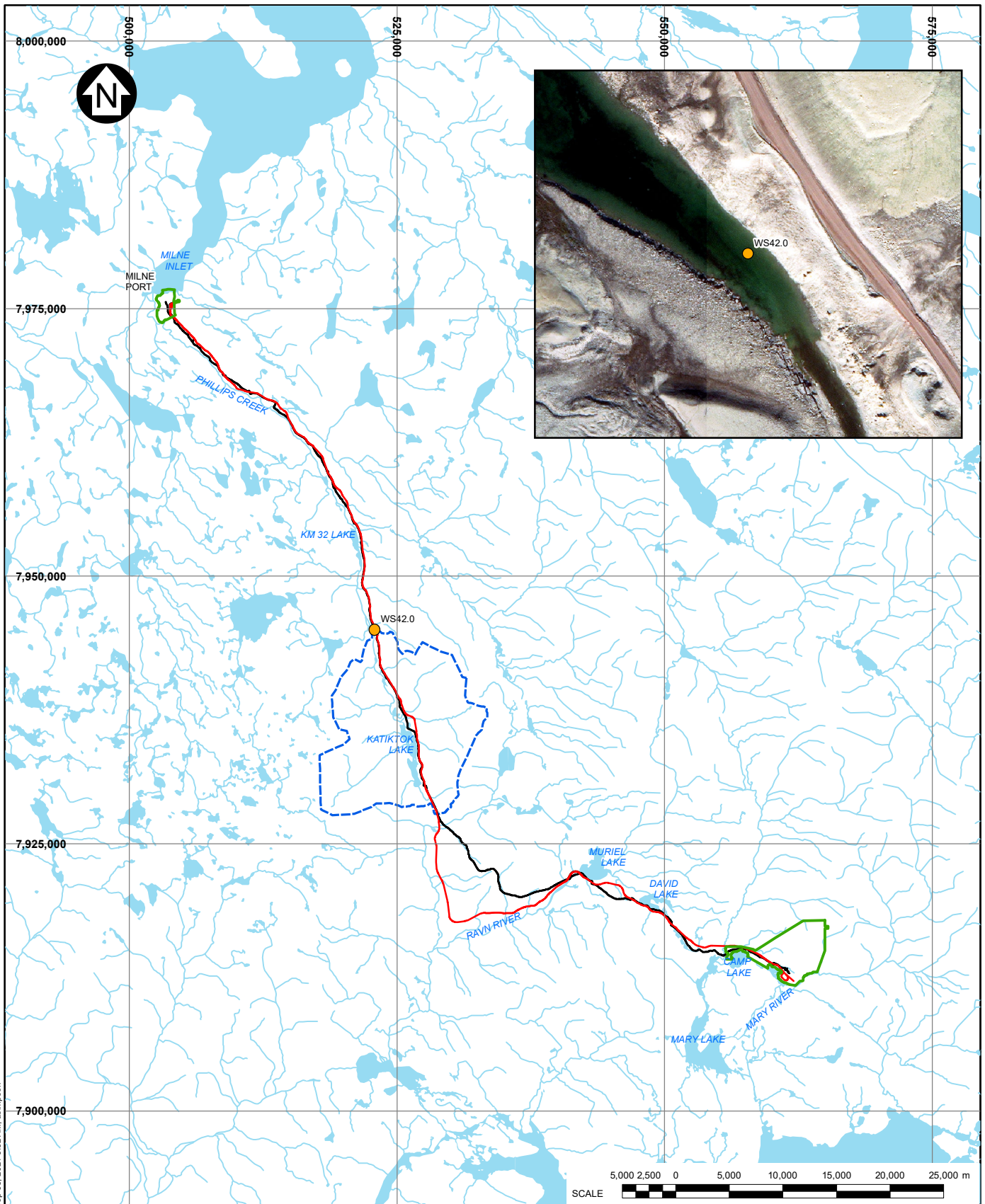
**FIGURE A.9**

REV  
0

SAVED: \\110200181\65\A\GIS\FigA10.RD.mxd; Sep 03, 2021 10:35 AM; asimpson

REV	DATE	DESCRIPTION	RAC DESIGNED	AS DRAWN	RAC REVIEWED
0	03SEP'21	ISSUED WITH REPORT			





#### LEGEND:

- APPROVED WATER STATION
- PROPOSED WATER STATION
- MILNE INLET TOTE ROAD
- PROPOSED NORTH RAILWAY
- POTENTIAL DEVELOPMENT AREA
- CATCHMENT BOUNDARY

#### NOTES:

1. COORDINATE GRID IS IN METRES.  
COORDINATE SYSTEM: NAD 1983 UTM ZONE 17N.
2. BASE MAP IMAGERY: © 2020 DIGITAL GLOBE, INC.

BAFFINLAND IRON MINES CORPORATION

MARY RIVER PROJECT

**WATER STATION  
WS42.0 CATCHMENT**



P/A NO.  
NB102-181/65

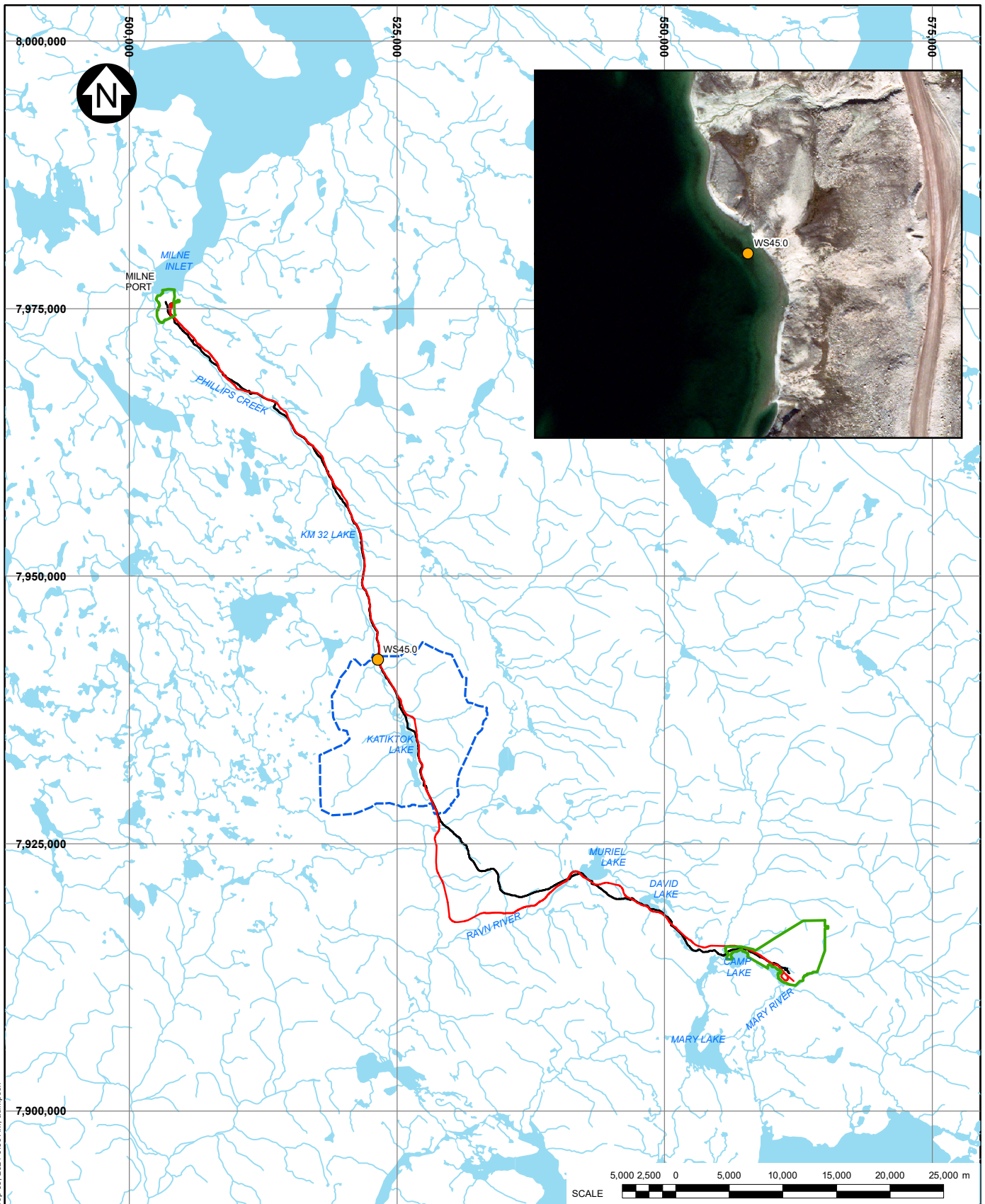
REF NO.  
1

**FIGURE A.10**

REV  
0

SAVED: I:\110200181\65\A\GIS\FigA11 RO.mxd, Sep 03, 2021 9:52 AM, asimpson

REV	DATE	DESCRIPTION	RAC DESIGNED	AS DRAWN	RAC REVIEWED
0	03SEP'21	ISSUED WITH REPORT			



**LEGEND:**

- APPROVED WATER STATION
- PROPOSED WATER STATION
- MILNE INLET TOTE ROAD
- PROPOSED NORTH RAILWAY
- POTENTIAL DEVELOPMENT AREA
- CATCHMENT BOUNDARY

**NOTES:**

- COORDINATE GRID IS IN METRES.  
COORDINATE SYSTEM: NAD 1983 UTM ZONE 17N.
- BASE MAP IMAGERY: © 2020 DIGITAL GLOBE, INC.

BAFFINLAND IRON MINES CORPORATION

MARY RIVER PROJECT

**WATER STATION  
WS45.0 CATCHMENT**

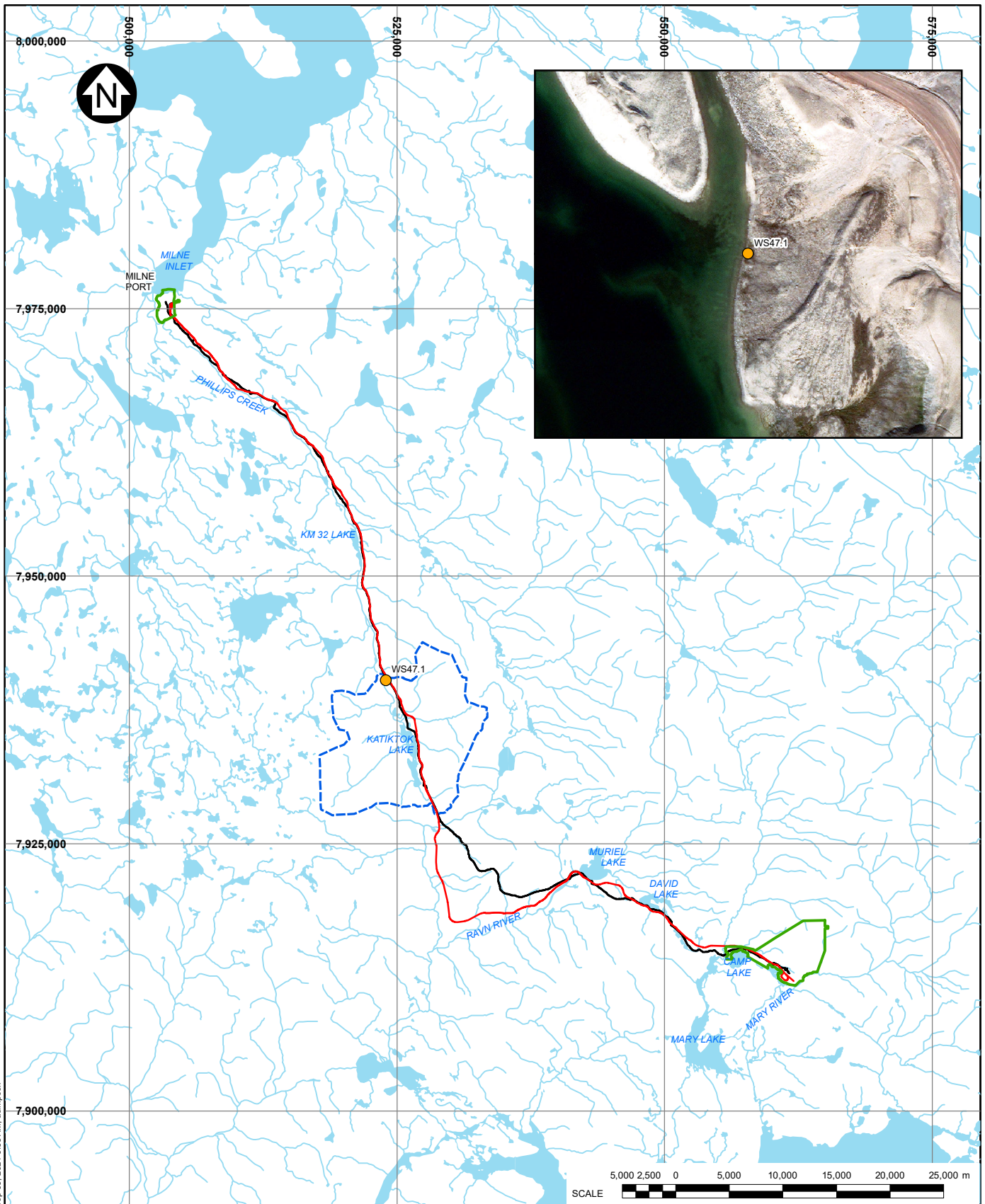
PIA NO. NB102-181/65	REF NO. 1
<b>FIGURE A.11</b>	
REV 0	

**Knight Piésold  
CONSULTING**

0	03SEP'21	ISSUED WITH REPORT	RAC	AS	RAC
REV	DATE	DESCRIPTION	DESIGNED	DRAWN	REVIEWED

SAVED: I:\110200181\65\A\GIS\FigA12.RD.mxd; Sep 03, 2021 9:50 AM; asimpson





#### LEGEND:

- APPROVED WATER STATION
- PROPOSED WATER STATION
- MILNE INLET TOTE ROAD
- PROPOSED NORTH RAILWAY
- POTENTIAL DEVELOPMENT AREA
- CATCHMENT BOUNDARY

#### NOTES:

1. COORDINATE GRID IS IN METRES.  
COORDINATE SYSTEM: NAD 1983 UTM ZONE 17N.
2. BASE MAP IMAGERY: c 2020 DIGITAL GLOBE, INC.

BAFFINLAND IRON MINES CORPORATION

MARY RIVER PROJECT

**WATER STATION  
WS47.1 CATCHMENT**

**KP Knight Piésold  
CONSULTING**

P/A NO.  
NB102-181/65

REF NO.  
1

**FIGURE A.12**

REV  
0

SAVED: I:\110200181\65\A\GIS\FigA13.RD.mxd: Sep 03, 2021 9:55 AM: asimpson

REV	DATE	DESCRIPTION	RAC DESIGNED	AS DRAWN	RAC REVIEWED
0	03SEP'21	ISSUED WITH REPORT			