

Railway Lake Encroachment Assessments

Crossing ID: L9

UTM: Start - 17W 594309 / 7891436
 End - 17W 594320 / 7891305
Latitude / Longitude: Start - 71°6'27.538" N / 78°23'22.619" W
 End - 71°6'23.299" N / 78°23' 22.086" W
Date / Time Surveyed: 25-Aug-07 / 22:25



Figure 1: View along shoreline of lake L9



Figure 2: View across lake L9



Figure 3: Typical substrate present in lake L9

Watercourse Characteristics

Tributary Status: upstream of large river

Channel Pattern: N/A

Crossing Site

Bankfull Width (m): N/A

Wetted Width (m): N/A

Depth Profile (25%, 50%, 75%; m): N/A

Max. Depth (m): 0.75

Flow Regime: persistent

Gradient (°): N/A

Upstream

Wetted / Bankfull Width (m): N/A

Max. Depth (m): N/A

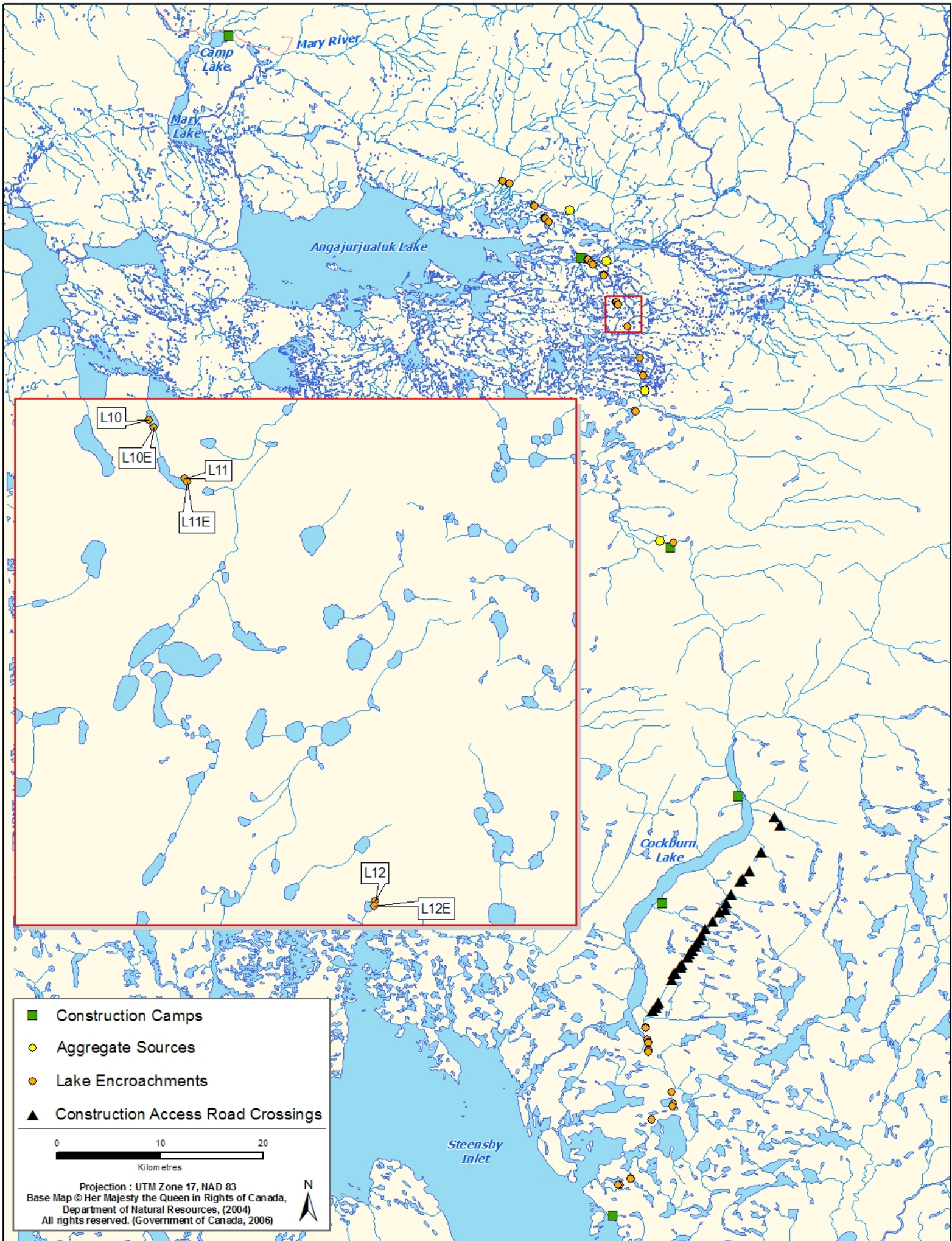
Downstream

Wetted / Bankfull Width (m): large river

Max. Depth (m): N/A

Notes

The connection between this lake and a large river ~300 m downstream is currently dry.



Railway Lake Encroachment Assessments

Crossing ID: L10

UTM: Start - 17W 595450 / 7888771
 End - 17W 595474 / 7888736
Latitude / Longitude: Start - 71°5'0.012" N / 78°21'40.639" W
 End - 71°4'58.850" N / 78°21'38.405" W
Date / Time Surveyed: 25-Aug-07 / 22:15



Figure 1: View across lake L10



Figure 2: Another view across lake L10



Figure 3: Typical substrate present in lake L10

Watercourse Characteristics

Tributary Status:	upstream of large river
Channel Pattern:	N/A
Crossing Site	
Bankfull Width (m):	N/A
Wetted Width (m):	N/A
Depth Profile (25%, 50%, 75%; m):	N/A
Max. Depth (m):	~ 0.30
Flow Regime:	persistent
Gradient (°):	N/A
Upstream	
Wetted / Bankfull Width (m):	N/A
Max. Depth (m):	N/A
Downstream	
Wetted / Bankfull Width (m):	no water
Max. Depth (m):	N/A

Notes

The connection between this lake and a large river ~1.5 km downstream is currently dry.

Railway Lake Encroachment Assessments

Crossing ID: L11

UTM: Start - 17W 595628 / 7888482
End - 17W 595642 / 7888466
Latitude / Longitude: Start - 71°4'50.443" N / 78°21'24.202" W
End - 71°4'49.907" N / 78°21'22.880" W
Date / Time Surveyed: 25-Aug-07 / 22:08



Figure 1: View across lake L11



Figure 2: Another view across lake L11



Figure 3: Typical substrate present in lake L11

Watercourse Characteristics

Tributary Status:	upstream of large river
Channel Pattern:	N/A
Crossing Site	
Bankfull Width (m):	N/A
Wetted Width (m):	N/A
Depth Profile (25%, 50%, 75%; m):	N/A
Max. Depth (m):	~ 0.30
Flow Regime:	persistent
Gradient (°):	N/A
Upstream	
Wetted / Bankfull Width (m):	N/A
Max. Depth (m):	N/A
Downstream	
Wetted / Bankfull Width (m):	N/A
Max. Depth (m):	N/A

Notes

There is a large river ~2 km downstream that is currently inaccessible from this lake due to dry areas.

Crossing ID: L12

UTM: Start - 17W 596570 / 7886388
End - 17W 596569 / 7886364
Latitude / Longitude: Start - 71°3'41.593" N / 78°19'59.760" W
End - 71°3'40.820" N / 78°19'59.965" W
Date / Time Surveyed: 25-Aug-07 / 22:01



Figure 1: View across lake L12



Figure 2: View along shoreline of lake L12



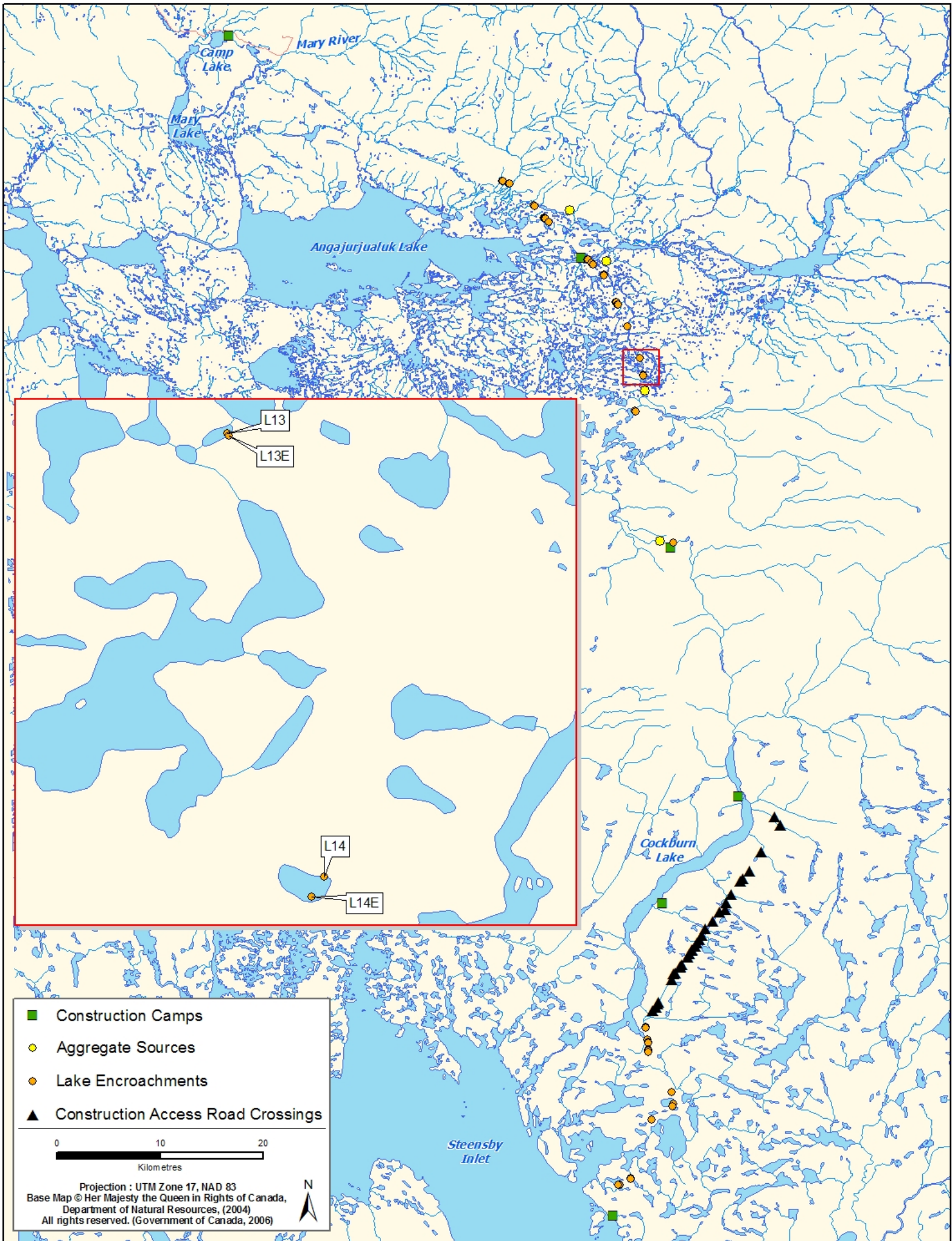
Figure 3: Typical substrate present in lake L12

Watercourse Characteristics

Tributary Status:	upstream of large river
Channel Pattern:	N/A
Crossing Site	
Bankfull Width (m):	N/A
Wetted Width (m):	N/A
Depth Profile (25%, 50%, 75%; m):	N/A
Max. Depth (m):	~ 0.15
Flow Regime:	persistent
Gradient (°):	N/A
Upstream	
Wetted / Bankfull Width (m):	N/A
Max. Depth (m):	N/A
Downstream	
Wetted / Bankfull Width (m):	large river
Max. Depth (m):	N/A

Notes

There is a large, unnamed river ~300 m downstream of this lake that is currently inaccessible from this lake due to dry areas.



Railway Lake Encroachment Assessments

Crossing ID: L13

UTM: Start - 17W 597763 / 7883336
 End - 17W 597770 / 7883329
Latitude / Longitude: Start - 71°2'1.484" N / 78°18'14.820" W
 End - 71°2'1.248" N / 78°18'14.157" W
Date / Time Surveyed: 25-Aug-07 / 22:01



Figure 1: View along shoreline of lake L13



Figure 2: View across lake L13



Figure 3: Typical substrate present in lake L13

Watercourse Characteristics

Tributary Status:	upstream of large river
Channel Pattern:	N/A
Crossing Site	
Bankfull Width (m):	N/A
Wetted Width (m):	N/A
Depth Profile (25%, 50%, 75%; m):	N/A
Max. Depth (m):	~ 0.50
Flow Regime:	persistent
Gradient (°):	N/A
Upstream	
Wetted / Bankfull Width (m):	N/A
Max. Depth (m):	N/A
Downstream	
Wetted / Bankfull Width (m):	large river
Max. Depth (m):	N/A

Notes

There is a large, unnamed river ~500 m downstream of this lake.

Crossing ID: L14

UTM: Start - 17W 598118 / 7881711
 End - 17W 598072 / 7881637
Latitude / Longitude: Start - 71°1'8.579" N / 78°17'46.821" W
 End - 71°1'6.260" N / 78°17'51.705" W
Date / Time Surveyed: 25-Aug-07 / 21:40



Figure 1: View across lake L14



Figure 2: View along shoreline of lake L14



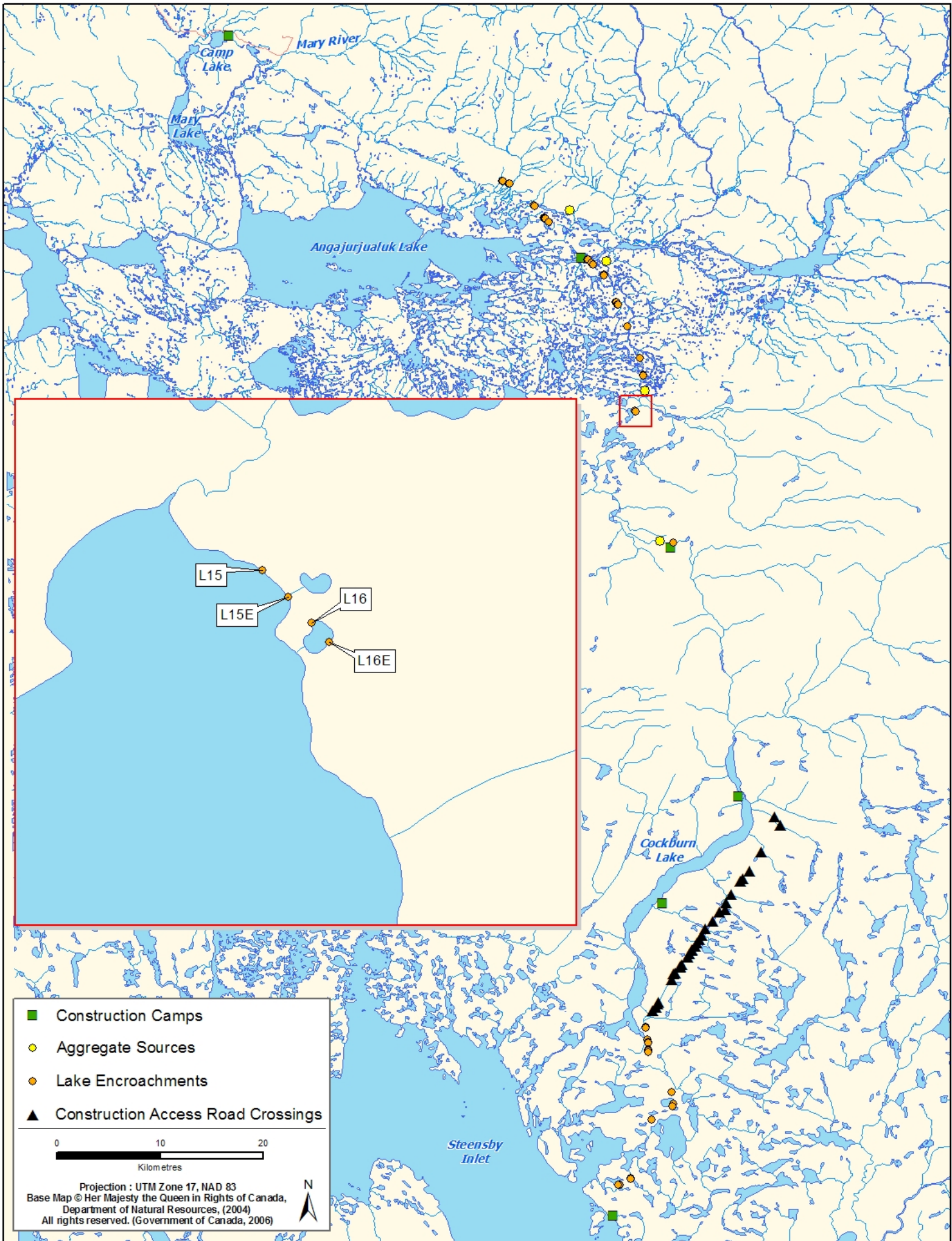
Figure 3: Typical substrate present in lake L14

Watercourse Characteristics

Tributary Status:	upstream of large river
Channel Pattern:	N/A
Crossing Site	
Bankfull Width (m):	N/A
Wetted Width (m):	N/A
Depth Profile (25%, 50%, 75%; m):	N/A
Max. Depth (m):	~ 0.35
Flow Regime:	persistent
Gradient (°):	N/A
Upstream	
Wetted / Bankfull Width (m):	N/A
Max. Depth (m):	N/A
Downstream	
Wetted / Bankfull Width (m):	large river
Max. Depth (m):	N/A

Notes

There is a large, unnamed river ~400 m downstream of this lake that is currently inaccessible due to dry areas.



Railway Lake Encroachment Assessments

Crossing ID: L15

UTM: Start - 17W 597293 / 7878225
End - 17W 597321 / 7878195
Latitude / Longitude: Start - 70°59'17.363" N / 78°19'23.812" W
End - 70°59'16.356" N / 78°19'21.174" W
Date / Time Surveyed: 25-Aug-07 / 21:25



Figure 1: View across lake L15



Figure 2: View along shoreline of lake L15



Figure 3: Typical substrate present in lake L15

Watercourse Characteristics

Tributary Status:	upstream of large river
Channel Pattern:	N/A
Crossing Site	
Bankfull Width (m):	N/A
Wetted Width (m):	N/A
Depth Profile (25%, 50%, 75%; m):	N/A
Max. Depth (m):	~ 0.25
Flow Regime:	persistent
Gradient (°):	N/A
Upstream	
Wetted / Bankfull Width (m):	N/A
Max. Depth (m):	N/A
Downstream	
Wetted / Bankfull Width (m):	N/A
Max. Depth (m):	N/A

Notes

There is a large, unnamed river ~1 km downstream of this lake and there are other nearby lakes of various sizes. Accessibility to these areas is variable, but generally limited during summer.

Crossing ID: L16

UTM: Start - 17W 597347 / 7878167
End - 17W 597366 / 7878146
Latitude / Longitude: Start - 70°59'15.416" N / 78°19'18.725" W
End - 70°59'14.712" N / 78°19'16.938" W
Date / Time Surveyed: 25-Aug-07 / 21:17



Figure 1: View across lake L16



Figure 2: View along shoreline of lake L16

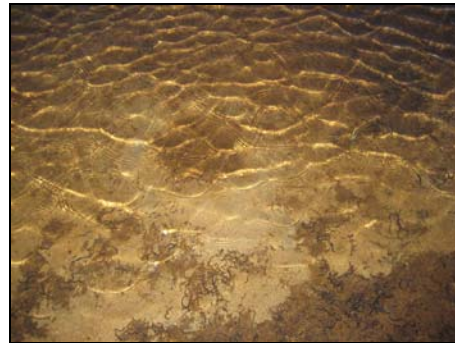


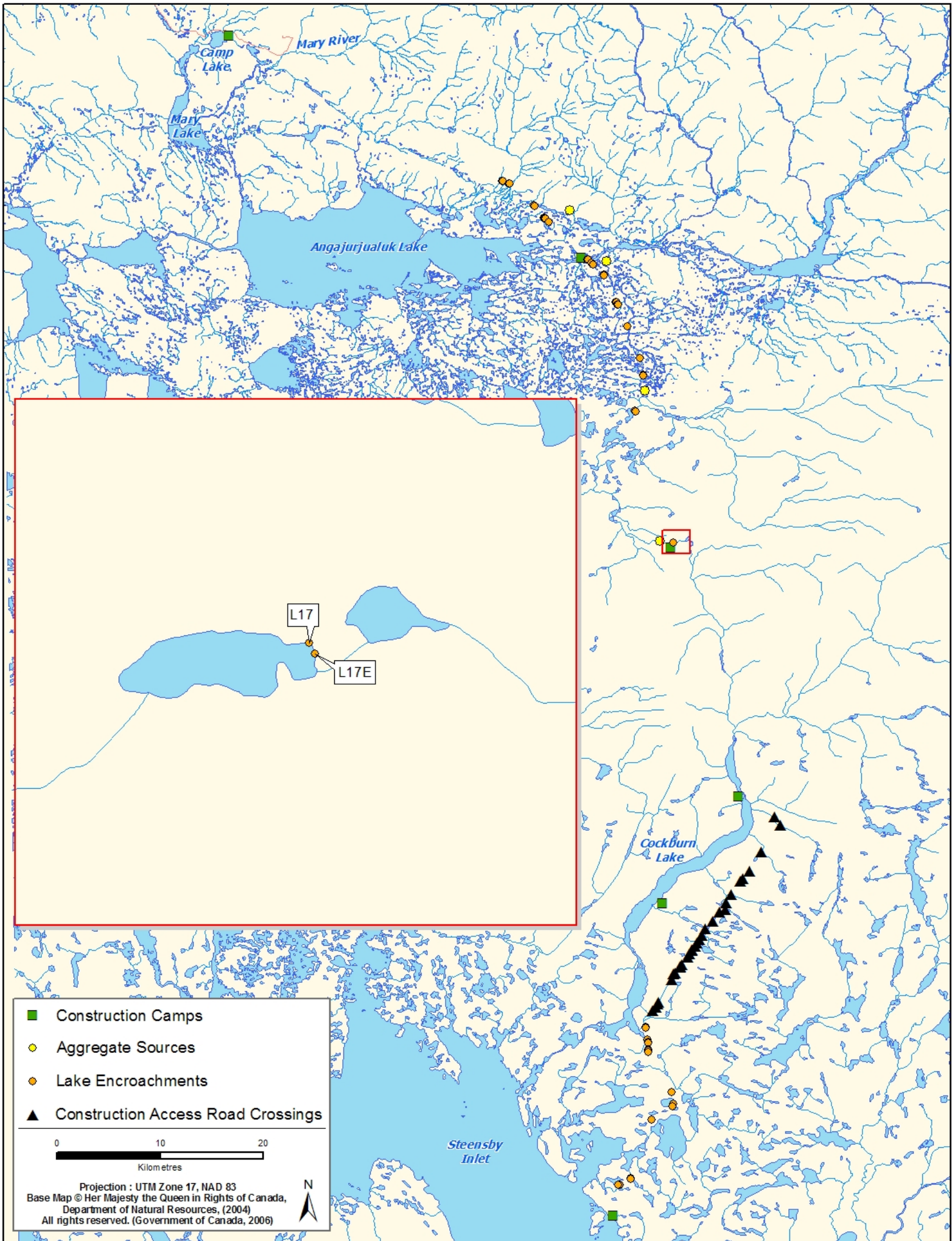
Figure 3: Typical substrate present in lake L16

Watercourse Characteristics

Tributary Status:	upstream of large river
Channel Pattern:	N/A
Crossing Site	
Bankfull Width (m):	N/A
Wetted Width (m):	N/A
Depth Profile (25%, 50%, 75%; m):	N/A
Max. Depth (m):	~ 0.20
Flow Regime:	persistent
Gradient (°):	N/A
Upstream	
Wetted / Bankfull Width (m):	N/A
Max. Depth (m):	N/A
Downstream	
Wetted / Bankfull Width (m):	N/A
Max. Depth (m):	N/A

Notes

Similar situation to Lake L15.



Railway Lake Encroachment Assessments

Crossing ID: L17**UTM:****Start** - 17W 601001 / 7865465**End** - 17W 601010 / 7865450**Latitude / Longitude:** **Start** - 70°52'20.584" N / 78°14'14.644" W**End** - 70°52'20.087" N / 78°14'13.826" W**Date / Time Surveyed:** 25-Aug-07 / 20:56

Figure 1: View across lake L17



Figure 2: View along shoreline of lake L17



Figure 3: Typical substrate present in lake L17

Watercourse Characteristics

Tributary Status: upstream of large river

Channel Pattern: N/A

Crossing Site

Bankfull Width (m): N/A

Wetted Width (m): N/A

Depth Profile (25%, 50%, 75%; m): N/A

Max. Depth (m): ~ 0.40

Flow Regime: persistent

Gradient (°): N/A

Upstream

Wetted / Bankfull Width (m): N/A

Max. Depth (m): N/A

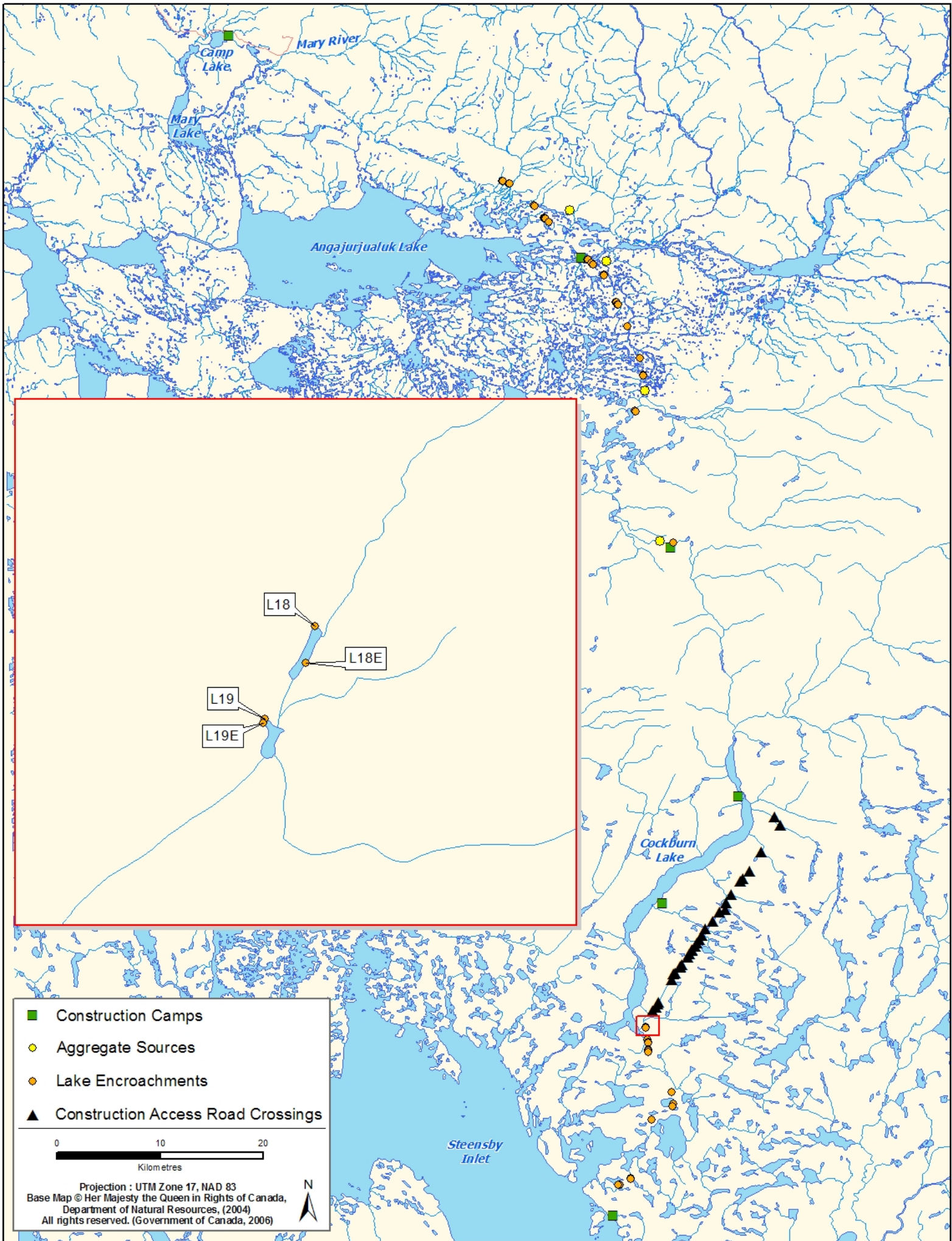
Downstream

Wetted / Bankfull Width (m): N/A

Max. Depth (m): N/A

Notes

The large, unnamed river is ~4 km downstream and there are currently no connections to any waterbodies deep enough for overwintering.



Railway Lake Encroachment Assessments

Crossing ID: L18

UTM: Start - 17W 598385 / 7818489
End - 17W 598379 / 7818464
Latitude / Longitude: Start - 70°27'9.653" N / 78°21'52.512" W
End - 70°27'8.855" N / 78°21'53.194" W
Date / Time Surveyed: 24-Aug-07 / 22:20



Figure 1: View across lake L18/L19



Figure 2: View along shoreline of lake L18/L19



Figure 3: Typical substrate present in lake L18/L19

Watercourse Characteristics

Tributary Status:	upstream of Cockburn L.
Channel Pattern:	N/A
Crossing Site	
Bankfull Width (m):	N/A
Wetted Width (m):	N/A
Depth Profile (25%, 50%, 75%; m):	N/A
Max. Depth (m):	~ 0.25
Flow Regime:	persistent
Gradient (°):	N/A
Upstream	
Wetted / Bankfull Width (m):	N/A
Max. Depth (m):	N/A
Downstream	
Wetted / Bankfull Width (m):	N/A
Max. Depth (m):	N/A

Notes

This lake is ~1 km upstream of Cockburn Lake but is not currently connected due to low water levels. This site encroaches on the same waterbody as L19.

Crossing ID: L19

UTM: Start - 17W 598351 / 7818426
End - 17W 598350 / 7818423
Latitude / Longitude: Start - 70°27'7.669" N / 78°21'56.049" W
End - 70°27'7.573" N / 78°21'56.158" W
Date / Time Surveyed: 24-Aug-07 / 22:20



Figure 1: View across lake L18/L19



Figure 2: View along shoreline of lake L18/L19



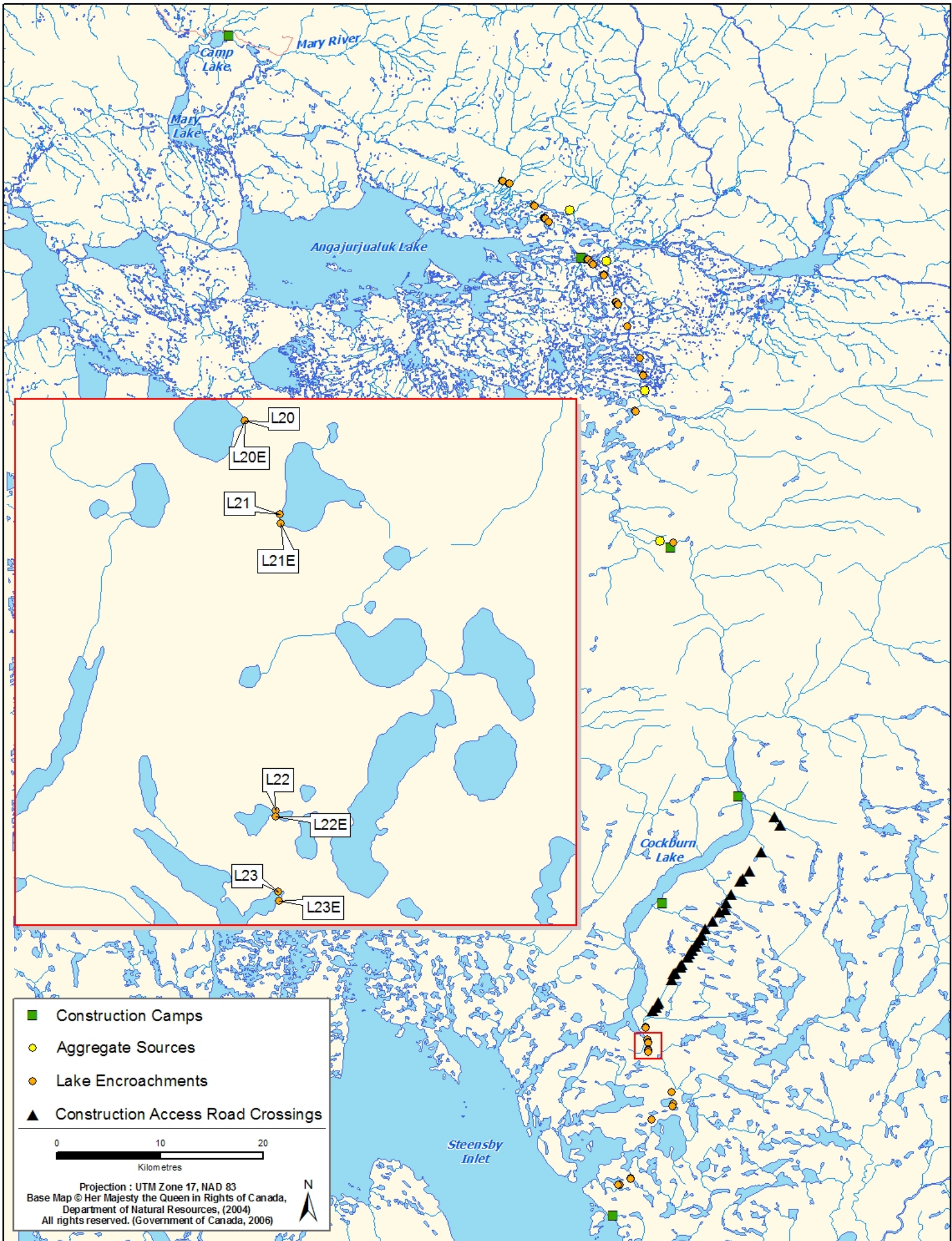
Figure 3: Typical substrate present in lake L18/L19

Watercourse Characteristics

Tributary Status:	upstream of Cockburn L.
Channel Pattern:	N/A
Crossing Site	
Bankfull Width (m):	N/A
Wetted Width (m):	N/A
Depth Profile (25%, 50%, 75%; m):	0.05, 0.10, 0.10
Max. Depth (m):	0.25
Flow Regime:	persistent
Gradient (°):	N/A
Upstream	
Wetted / Bankfull Width (m):	N/A
Max. Depth (m):	N/A
Downstream	
Wetted / Bankfull Width (m):	N/A
Max. Depth (m):	N/A

Notes

See Site L18 for description.



Railway Lake Encroachment Assessments

Crossing ID: L20**UTM:** Start - 17W 598528 / 7817276**End** - same as start**Latitude / Longitude:** 70°26'30.338" N / 78°21'43.812" W**Date / Time Surveyed:** 24-Aug-07 / 22:06

Figure 1: View across lake L20



Figure 2: View along shoreline of lake L20

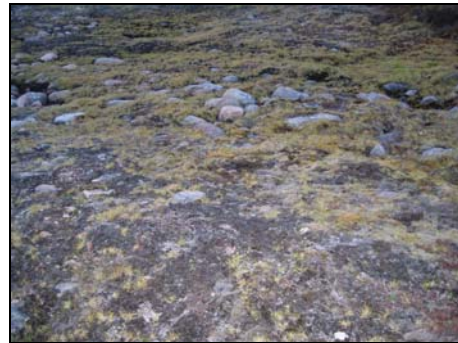


Figure 3: View of substrate at encroachment site L20

Watercourse Characteristics

Tributary Status: isolated lake

Channel Pattern: N/A

Crossing Site

Bankfull Width (m): N/A

Wetted Width (m): N/A

Depth Profile (25%, 50%, 75%; m): N/A

Max. Depth (m): > 1.00

Flow Regime: persistent

Gradient (°): N/A

Upstream

Wetted / Bankfull Width (m): N/A

Max. Depth (m): N/A

Downstream

Wetted / Bankfull Width (m): N/A

Max. Depth (m): N/A

Notes

The actual encroachment site is several meters from the shoreline of the lake; this site is probably only wetted during the spring.

Railway Lake Encroachment Assessments

Crossing ID: L21

UTM: Start - 17W 598616 / 7817042
End - 17W 598618 / 7817019
Latitude / Longitude: Start - 70°26'22.669" N / 78°21'36.321"W
End - 70°26'21.925" N / 78°21'36.224" W
Date / Time Surveyed: 24-Aug-07 / 21:57



Figure 1: View across lake L21

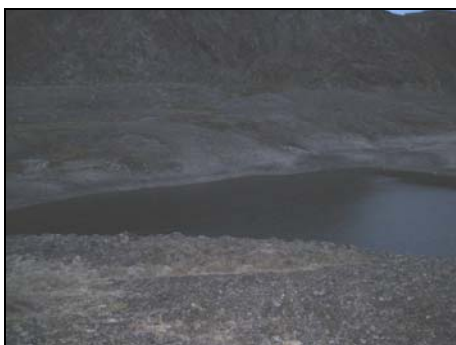


Figure 2: Another view across lake L21



Figure 3: Typical substrate present in lake L21

Watercourse Characteristics

Tributary Status: isolated lake

Channel Pattern: N/A

Crossing Site

Bankfull Width (m): N/A

Wetted Width (m): N/A

Depth Profile (25%, 50%, 75%; m): N/A

Max. Depth (m): > 1.0

Flow Regime: persistent

Gradient (°): N/A

Upstream

Wetted / Bankfull Width (m): N/A

Max. Depth (m): N/A

Downstream

Wetted / Bankfull Width (m): N/A

Max. Depth (m): N/A

Notes

No connections with other large bodies of water. Has an isolated population of fish.

Crossing ID: L22

UTM: Start - 17W 598606 / 7816295
End - 17W 598606 / 7816282
Latitude / Longitude: Start - 70°25'58.595" N / 78°21'40.405"W
End - 70°25'58.176" N / 78°21'40.459" W
Date / Time Surveyed: 24-Aug-07 / 21:37



Figure 1: View across lake L22

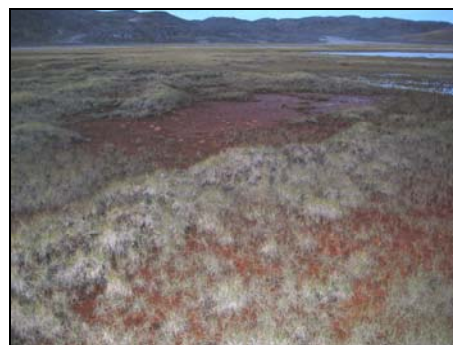


Figure 2: View of substrate at encroachment site L22

Watercourse Characteristics

Tributary Status: upstream of large lake

Channel Pattern: N/A

Crossing Site

Bankfull Width (m): N/A

Wetted Width (m): N/A

Depth Profile (25%, 50%, 75%; m): N/A

Max. Depth (m): dry

Flow Regime: intermittent

Gradient (°): N/A

Upstream

Wetted / Bankfull Width (m): N/A

Max. Depth (m): N/A

Downstream

Wetted / Bankfull Width (m): N/A

Max. Depth (m): N/A

Notes

Several km upstream of large lake; this site is probably only wetted during the spring. Part of a group of intermittently connected lakes

Railway Lake Encroachment Assessments

Crossing ID: L23

UTM: Start - 17W 598613 / 7816093
 End - 17W 598614 / 7816068
Latitude / Longitude: Start - 70°25'52.072" N / 78°21'40.576"W
 End - 70°25'51.264" N / 78°21'40.584" W
Date / Time Surveyed: 24-Aug-07 / 21:33



Figure 1: View across lake L23



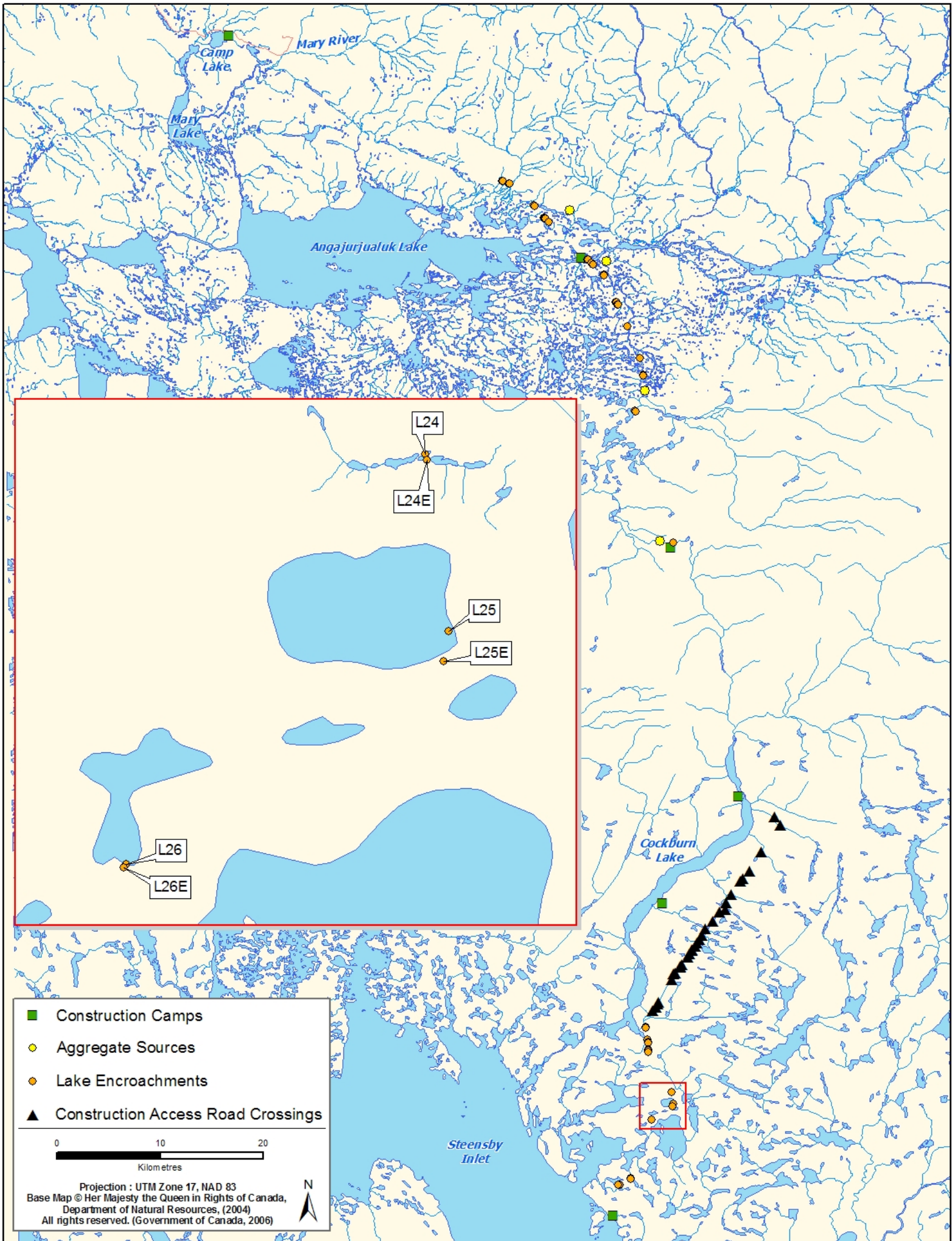
Figure 2: View along shoreline of lake L23

Watercourse Characteristics

Tributary Status:	upstream of large river
Channel Pattern:	N/A
Crossing Site	
Bankfull Width (m):	N/A
Wetted Width (m):	N/A
Depth Profile (25%, 50%, 75%; m):	N/A
Max. Depth (m):	~ 0.10
Flow Regime:	persistent
Gradient (°):	N/A
Upstream	
Wetted / Bankfull Width (m):	N/A
Max. Depth (m):	N/A
Downstream	
Wetted / Bankfull Width (m):	small lake
Max. Depth (m):	N/A

Notes

One of a group of small lakes with intermittent connections to each other and to the large river ~2 km downstream.



Railway Lake Encroachment Assessments

Crossing ID: L24

UTM: Start - 17W 600850 / 7812211
 End - 17W 600861 / 7812177
Latitude / Longitude: Start - 70°23'43.730" N / 78°18'21.936" W
 End - 70°23'42.618" N / 78°18'21.024" W
Date / Time Surveyed: 13-Aug-07 / 22:20



Figure 1: View across lake L24

Watercourse Characteristics

Tributary Status:	upstream of large lake
Channel Pattern:	N/A
Crossing Site	
Bankfull Width (m):	N/A
Wetted Width (m):	N/A
Depth Profile (25%, 50%, 75%; m):	N/A
Max. Depth (m):	~ 0.20
Flow Regime:	persistent
Gradient (°):	N/A
Upstream	
Wetted / Bankfull Width (m):	small lake/pond
Max. Depth (m):	N/A
Downstream	
Wetted / Bankfull Width (m):	small lake/pond
Max. Depth (m):	N/A

Notes

One of a group of small lakes/ponds with intermittent connections to each other and to the large lake ~800 m downstream.

Railway Lake Encroachment Assessments

Crossing ID: L25

UTM: Start - 17W 601006 / 7811062
 End - 17W 600970 / 7810866
Latitude / Longitude: Start - 70°23'6.457" N / 78°18'11.851" W
 End - 70°23'0.189" N / 78°18'16.140" W
Date / Time Surveyed: 13-Aug-07 / 22:45



Figure 1: Aerial view of lake L25



Figure 2: Aerial view along shoreline of lake L25

Watercourse Characteristics

Tributary Status: upstream of large lake

Channel Pattern: N/A

Crossing Site

Bankfull Width (m): N/A
 Wetted Width (m): N/A
 Depth Profile (25%, 50%, 75%; m): N/A
 Max. Depth (m): > 1.0
 Flow Regime: persistent
 Gradient (°): N/A

Upstream

Wetted / Bankfull Width (m): N/A
 Max. Depth (m): N/A

Downstream

Wetted / Bankfull Width (m): large lake
 Max. Depth (m): N/A

Notes

Large lake that is ~1 km upstream of and connected to even larger lake.

Crossing ID: L26

UTM: Start - 17W 598908 / 7809541
 End - 17W 598890 / 7809524
Latitude / Longitude: Start - 70°22'20.381" N / 78°21'39.565" W
 End - 70°22'19.858" N / 78°21'41.363" W
Date / Time Surveyed: 13-Aug-07 / 23:00

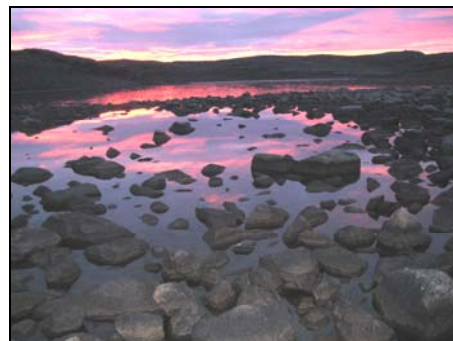


Figure 1: View across lake L26

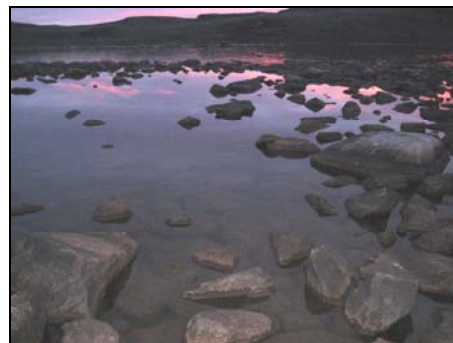


Figure 2: View along shoreline of lake L26

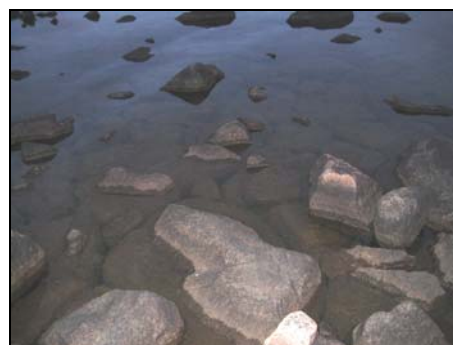


Figure 3: Typical substrate present in lake L26

Watercourse Characteristics

Tributary Status: upstream of large lake

Channel Pattern: N/A

Crossing Site

Bankfull Width (m): N/A
 Wetted Width (m): N/A
 Depth Profile (25%, 50%, 75%; m): N/A
 Max. Depth (m): > 1.0
 Flow Regime: persistent
 Gradient (°): N/A

Upstream

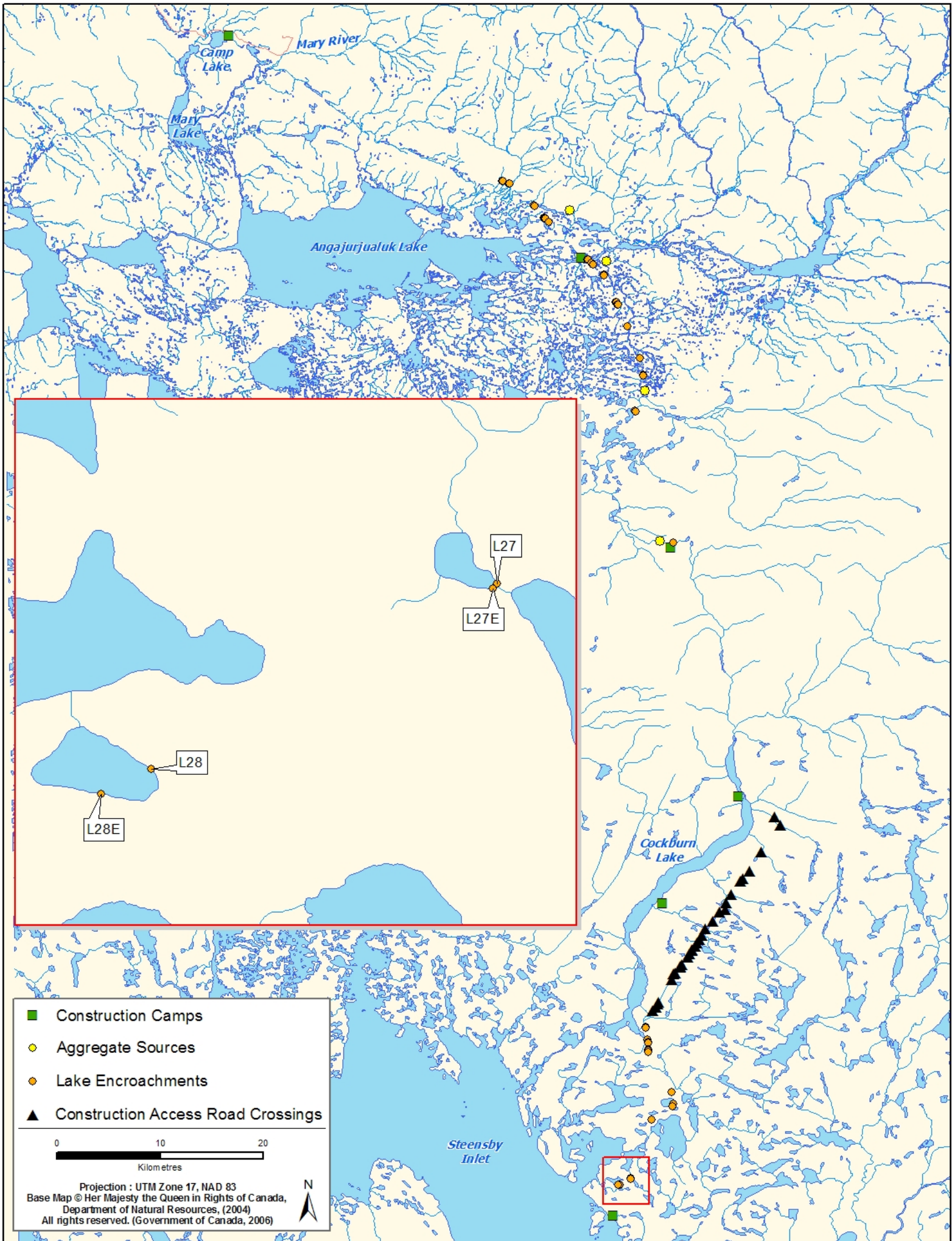
Wetted / Bankfull Width (m): N/A
 Max. Depth (m): N/A

Downstream

Wetted / Bankfull Width (m): large lake
 Max. Depth (m): N/A

Notes

Large lake that is ~1 km upstream of and connected to even larger lake.



Railway Lake Encroachment Assessments

Crossing ID: L27

UTM: Start - 17W 596925 / 7803847
 End - 17W 596913 / 7803831
Latitude / Longitude: Start - 70°19'19.510" N / 78°25'12.970" W
 End - 70°19'19.010" N / 78°25'14.183" W
Date / Time Surveyed: 13-Aug-07 / 00:29



Figure 1: View across lake L27



Figure 2: View along shoreline of lake L27



Figure 3: Typical substrate present in lake L27

Watercourse Characteristics

Tributary Status:	upstream of Steensby
Channel Pattern:	N/A
Crossing Site	
Bankfull Width (m):	N/A
Wetted Width (m):	N/A
Depth Profile (25%, 50%, 75%; m):	N/A
Max. Depth (m):	> 1.00
Flow Regime:	persistent
Gradient (°):	N/A
Upstream	
Wetted / Bankfull Width (m):	N/A
Max. Depth (m):	N/A
Downstream	
Wetted / Bankfull Width (m):	Steensby Inlet
Max. Depth (m):	N/A

Notes

This lake is ~1 km upstream of Steensby Inlet and is connected for at least some of the open water season.

Crossing ID: L28

UTM: Start - 17W 595849 / 7803268
 End - 17W 595693 / 7803192
Latitude / Longitude: Start - 70°19'2.302" N / 78°26'58.263" W
 End - 70°19' 0.062" N / 78°27' 13.493" W
Date / Time Surveyed: 14-Aug-07 / 22:14



Figure 1: Aerial view across lake L28



Figure 2: Aerial view along shoreline of lake L28 showing available substrate

Watercourse Characteristics

Tributary Status:	upstream of Steensby
Channel Pattern:	N/A
Crossing Site	
Bankfull Width (m):	N/A
Wetted Width (m):	N/A
Depth Profile (25%, 50%, 75%; m):	N/A
Max. Depth (m):	> 1.00
Flow Regime:	persistent
Gradient (°):	N/A
Upstream	
Wetted / Bankfull Width (m):	N/A
Max. Depth (m):	N/A
Downstream	
Wetted / Bankfull Width (m):	Steensby Inlet
Max. Depth (m):	N/A

Notes

This small lake is ~2 km upstream of Steensby Inlet, to which it is no currently connected.