



Assessment of Watercourses Near Railway Aggregate Sources

Crossing ID: B5

UTM: 17W 590946 / 7897624

Latitude / Longitude: 71°9'51.675" N / 78°28'31.612" W

Date / Time Surveyed: 15-Aug-07 / 00:10

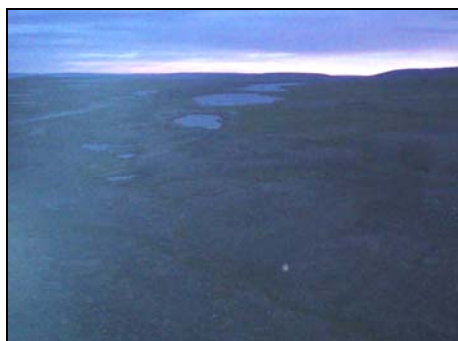


Figure 1: Aerial view of area near aggregate source B5

Site Characteristics

Tributary Status:	isolated
Channel Pattern:	N/A
Crossing Site	
Bankfull Width:	N/A
Wetted Width (m):	N/A
Depth Profile (25%, 50%, 75%; m):	N/A
Max. Depth (m):	N/A
Flow Regime:	persistent
Gradient (°):	N/A
Upstream	
Wetted / Bankfull Width (m):	N/A
Max. Depth (m):	N/A
Downstream	
Wetted / Bankfull Width (m):	N/A
Max. Depth (m):	N/A

Notes

This aggregate source is ~500 m from the nearest small body of water and several km from the nearest major waterbody.

Crossing ID: B6

UTM: 17W 594536 / 7892702

Latitude / Longitude: 71°7'8.043" N / 78°22'54.578" W

Date / Time Surveyed: 15-Aug-07 / 00:07



Figure 1: Aerial view of area near aggregate source B6

Site Characteristics

Tributary Status:	isolated
Channel Pattern:	N/A
Crossing Site	
Bankfull Width (m):	N/A
Wetted Width (m):	N/A
Depth Profile (25%, 50%, 75%; m):	N/A
Max. Depth (m):	N/A
Flow Regime:	N/A
Gradient (°):	N/A
Upstream	
Wetted / Bankfull Width (m):	N/A
Max. Depth (m):	N/A
Downstream	
Wetted / Bankfull Width (m):	N/A
Max. Depth (m):	N/A

Notes

This aggregate source is ~50 m from the nearest small body of water and ~500 m from the nearest major waterbody.

Assessment of Watercourses Near Railway Aggregate Sources

Crossing ID: B9

UTM: 17W 598231 / 7880196

Latitude / Longitude: 71°0'19.570" N / 78°17'42.332" W

Date / Time Surveyed: 14-Aug-07 / 23:19

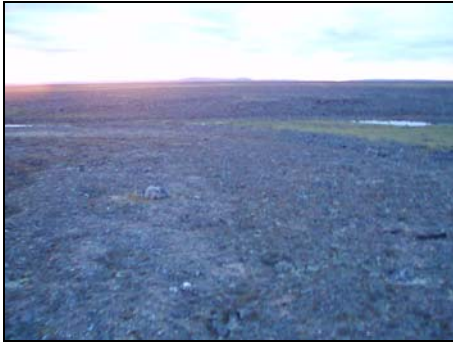


Figure 1: Aerial view of area near aggregate source B9



Figure 2: Another aerial view of area near aggregate source B9

Site Characteristics

Tributary Status: near 1st order trib

Channel Pattern: N/A

Crossing Site

Bankfull Width (m): N/M

Wetted Width (m): N/M

Depth Profile (25%, 50%, 75%; m): N/A

Max Depth (m): N/M

Flow Regime: N/A

Gradient (°):

Upstream

Wetted / Bankfull Width (m): N/A

Max. Depth (m): N/A

Downstream

Wetted / Bankfull Width (m): N/A

Max. Depth (m): N/A

Notes

This aggregate source is close to, but not encroaching on a small tributary ~100 m upstream of a large, persistent river.

Crossing ID: B13

UTM: 17W 598231 / 7880196

Latitude / Longitude: 70°52'26.899" N / 78°16'19.596" W

Date / Time Surveyed: 14-Aug-07 / 22:54



Figure 1: Aerial view of area near aggregate source B13



Figure 2: Another aerial view of area near aggregate source B13

Site Characteristics

Tributary Status: near 1st order trib

Channel Pattern: N/M

Crossing Site

Bankfull Width (m): N/M

Wetted Width (m): N/M

Depth Profile (25%, 50%, 75%; m): N/A

Max Depth (m): < 0.20

Flow Regime: N/A

Gradient (°):

Upstream

Wetted / Bankfull Width (m): N/M

Max. Depth (m): N/M

Downstream

Wetted / Bankfull Width (m): N/M

Max. Depth (m): N/M

Notes

The small stream near this aggregate source is a 1st order tributary ~3 km upstream of a larger river.