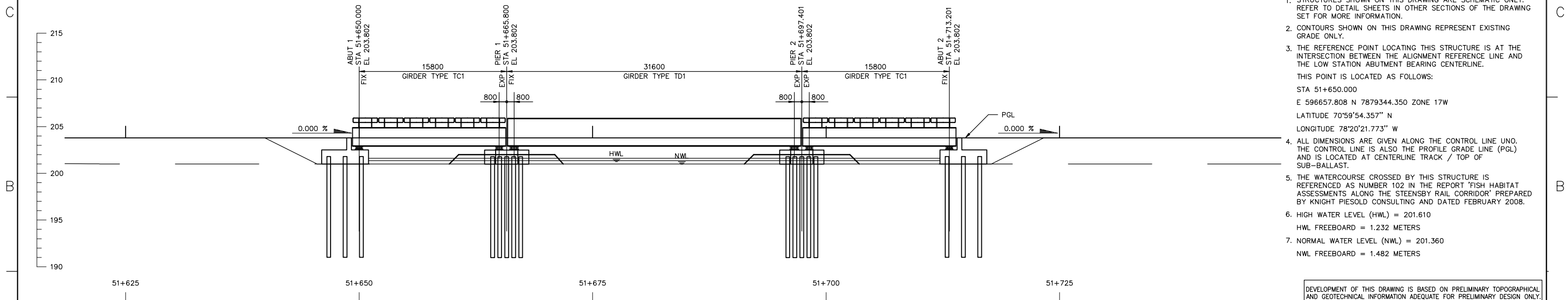
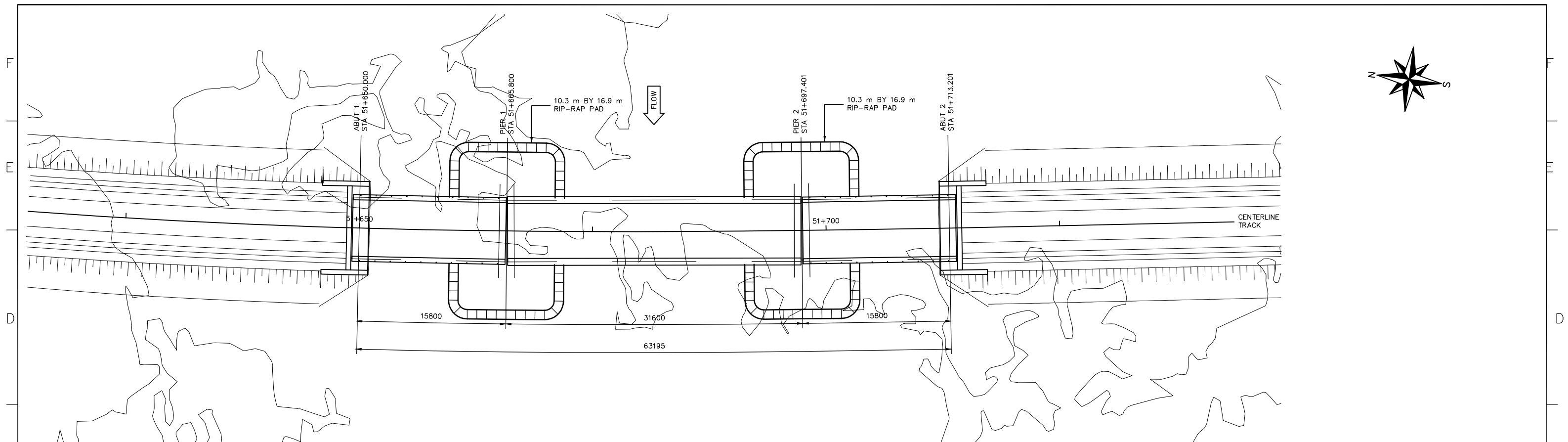


1. THIS PHOTO MOSAIC IS PROVIDED FOR GENERAL INFORMATION ONLY AND MAY NOT REFLECT THE CURRENT CONDITION OF THE SITE.
2. STRUCTURES SHOWN ON THIS DRAWING ARE SCHEMATIC ONLY. REFER TO DETAIL SHEETS IN OTHER SECTIONS OF THE DRAWING SET FOR MORE INFORMATION.
3. CONTOURS SHOWN ON THIS DRAWING REPRESENT EXISTING GRADE ONLY.

DEVELOPMENT OF THIS DRAWING IS BASED ON PRELIMINARY TOPOGRAPHICAL
AND GEOTECHNICAL INFORMATION ADEQUATE FOR PRELIMINARY DESIGN ONLY.
IT SHOULD NOT BE USED FOR CONSTRUCTION OR ANY OTHER PURPOSES.

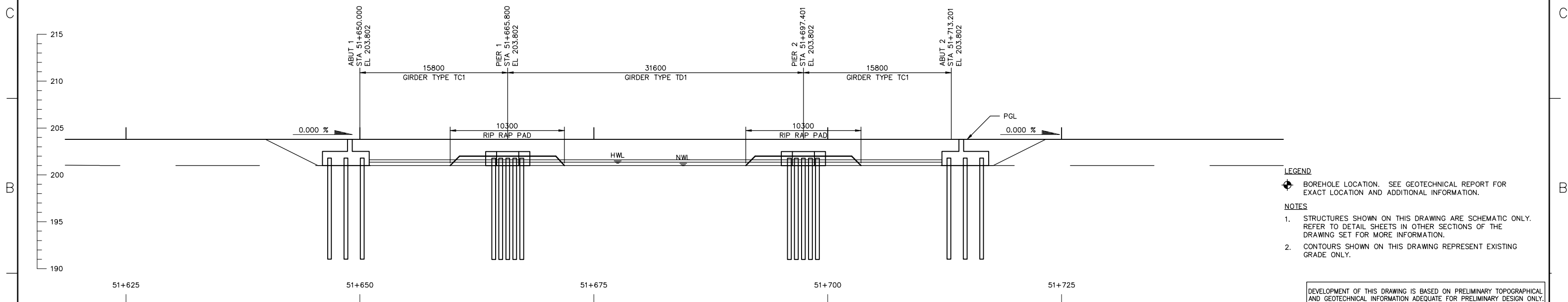
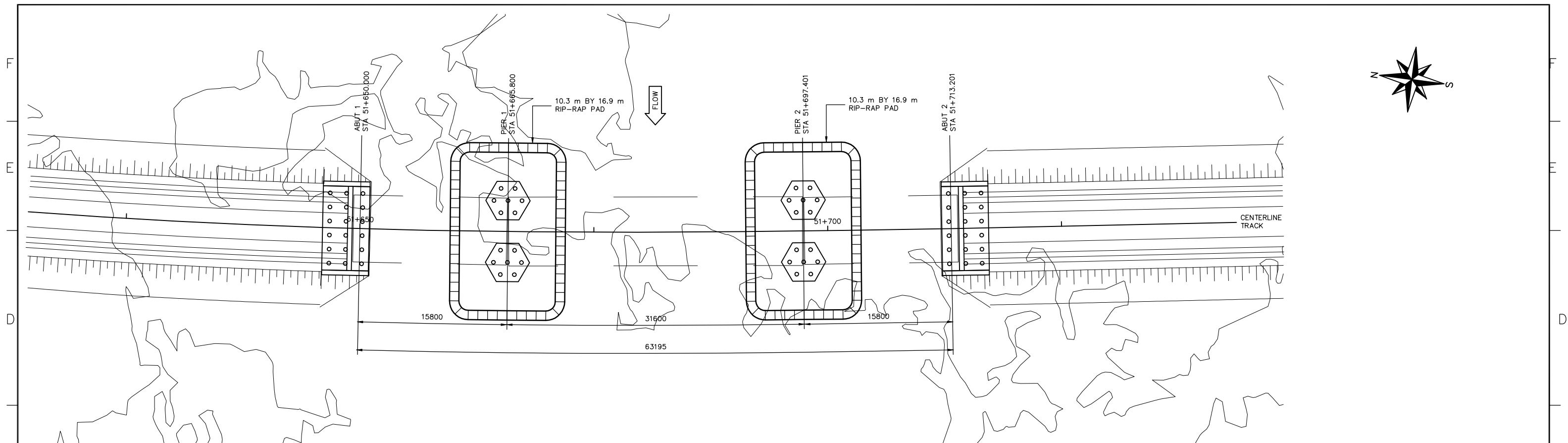
[illegible]



- NOTES**
1. STRUCTURES SHOWN ON THIS DRAWING ARE SCHEMATIC ONLY. REFER TO DETAIL SHEETS IN OTHER SECTIONS OF THE DRAWING SET FOR MORE INFORMATION.
 2. CONTOURS SHOWN ON THIS DRAWING REPRESENT EXISTING GRADE ONLY.
 3. THE REFERENCE POINT LOCATING THIS STRUCTURE IS AT THE INTERSECTION BETWEEN THE ALIGNMENT REFERENCE LINE AND THE LOW STATION ABUTMENT BEARING CENTERLINE.
THIS POINT IS LOCATED AS FOLLOWS:
STA 51+650.000
E 596657.808 N 7879344.350 ZONE 17W
LATITUDE 70°59'54.357" N
LONGITUDE 78°20'21.773" W
 4. ALL DIMENSIONS ARE GIVEN ALONG THE CONTROL LINE UNO. THE CONTROL LINE IS ALSO THE PROFILE GRADE LINE (PGL) AND IS LOCATED AT CENTERLINE TRACK / TOP OF SUB-BALLAST.
 5. THE WATERCOURSE CROSSED BY THIS STRUCTURE IS REFERENCED AS SECTION 102 IN THE REPORT 'FISH HABITAT ASSESSMENTS ALONG THE STEENSBY RAIL CORRIDOR' PREPARED BY KNIGHT PIESOLD CONSULTING AND DATED FEBRUARY 2008.
 6. HIGH WATER LEVEL (HWL) = 201.610
HWL FREEBOARD = 1.232 METERS
 7. NORMAL WATER LEVEL (NWL) = 201.360
NWL FREEBOARD = 1.482 METERS

DEVELOPMENT OF THIS DRAWING IS BASED ON PRELIMINARY TOPOGRAPHICAL
AND GEOTECHNICAL INFORMATION ADEQUATE FOR PRELIMINARY DESIGN ONLY.
IT SHOULD NOT BE USED FOR CONSTRUCTION OR ANY OTHER PURPOSES.




[illegible]

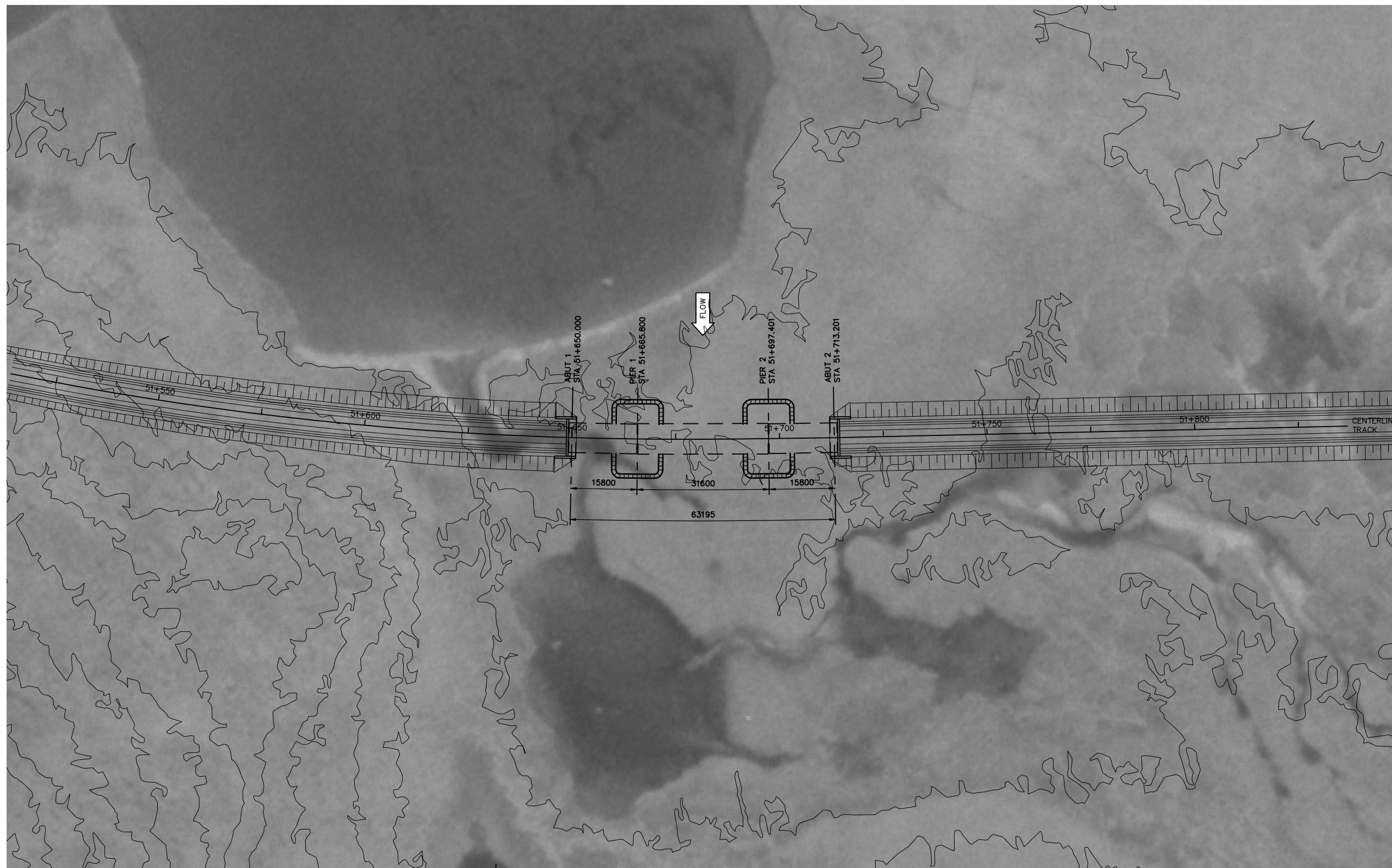
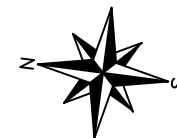


BOREHOLE LOCATION. SEE GEOTECHNICAL REPORT FOR EXACT LOCATION AND ADDITIONAL INFORMATION.

1. STRUCTURES SHOWN ON THIS DRAWING ARE SCHEMATIC ONLY. REFER TO DETAIL SHEETS IN OTHER SECTIONS OF THE DRAWING SET FOR MORE INFORMATION.
2. CONTOURS SHOWN ON THIS DRAWING REPRESENT EXISTING GRADE ONLY.

DEVELOPMENT OF THIS DRAWING IS BASED ON PRELIMINARY TOPOGRAPHICAL
AND GEOTECHNICAL INFORMATION ADEQUATE FOR PRELIMINARY DESIGN ONLY.
IT SHOULD NOT BE USED FOR CONSTRUCTION OR ANY OTHER PURPOSES.

																									<div><div></div><div></div></div>																																																																																																																																																					
															<div><div>Client Mgr.</div><div>Engineering Mgr.</div><div>Project Mgr.</div></div>										<div><div>PROJECT PHASE</div><div>LAND PERMIT APPLICATION</div></div>										<div><div>AREA</div><div>5200</div></div>										<div><div>PROJECT NUMBER</div><div></div></div>																																																																																																																																	
															<div><div>PROJECT NO.</div><div></div></div>										<div><div>ACTIVITY NO.</div><div></div></div>										<div><div>BY</div><div></div></div>										<div><div>DDMMYY</div><div></div></div>										<div><div>SUBJECT</div><div></div></div>																																																																																																																							
															<div><div>DSN</div><div>KGW</div></div>										<div><div>DRN</div><div>KGW</div></div>										<div><div>CHK</div><div>JAS</div></div>										<div><div>APP</div><div></div></div>										<div><div>CV-051-2</div><div>FOUNDATION LAYOUT</div></div>										<div><div>DRAWING NO.</div><div>A1-159952-5200-122-6208-02</div></div>										<div><div>REV.</div><div>0</div></div>																																																																																																			
0 10/12/10 ISSUED FOR DEIS ONLY															KGW JAS BGH										APP APP APP										ISS DDMMYY APP										ISSUED FOR										REF NUMBER										TITLE										STAMP/SEAL																																																																																																			
REV DDMMYY															REVISION										DR CHK APP										APP APP APP										ISS DDMMYY APP										ISSUED FOR										REFERENCES										PROPRIETARY INFORMATION: THIS DRAWING IS THE PROPERTY OF AMEC AMERICAS, LTD. AND IS NOT TO BE LOANED OR REPRODUCED IN ANY WAY WITHOUT THE PERMISSION OF AMEC AMERICAS, LTD.																																																																																																			
9															1										8										1										7										1										6										1										5										1										4										1										3										1										2										1										CAD FILE:									



1. THIS PHOTO MOSAIC IS PROVIDED FOR GENERAL INFORMATION ONLY AND MAY NOT REFLECT THE CURRENT CONDITION OF THE SITE.
2. STRUCTURES SHOWN ON THIS DRAWING ARE SCHEMATIC ONLY. REFER TO DETAIL SHEETS IN OTHER SECTIONS OF THE DRAWING SET FOR MORE INFORMATION.
3. CONTOURS SHOWN ON THIS DRAWING REPRESENT EXISTING GRADE ONLY.

DEVELOPMENT OF THIS DRAWING IS BASED ON PRELIMINARY TOPOGRAPHICAL
AND GEOTECHNICAL INFORMATION ADEQUATE FOR PRELIMINARY DESIGN ONLY.
IT SHOULD NOT BE USED FOR CONSTRUCTION OR ANY OTHER PURPOSES.

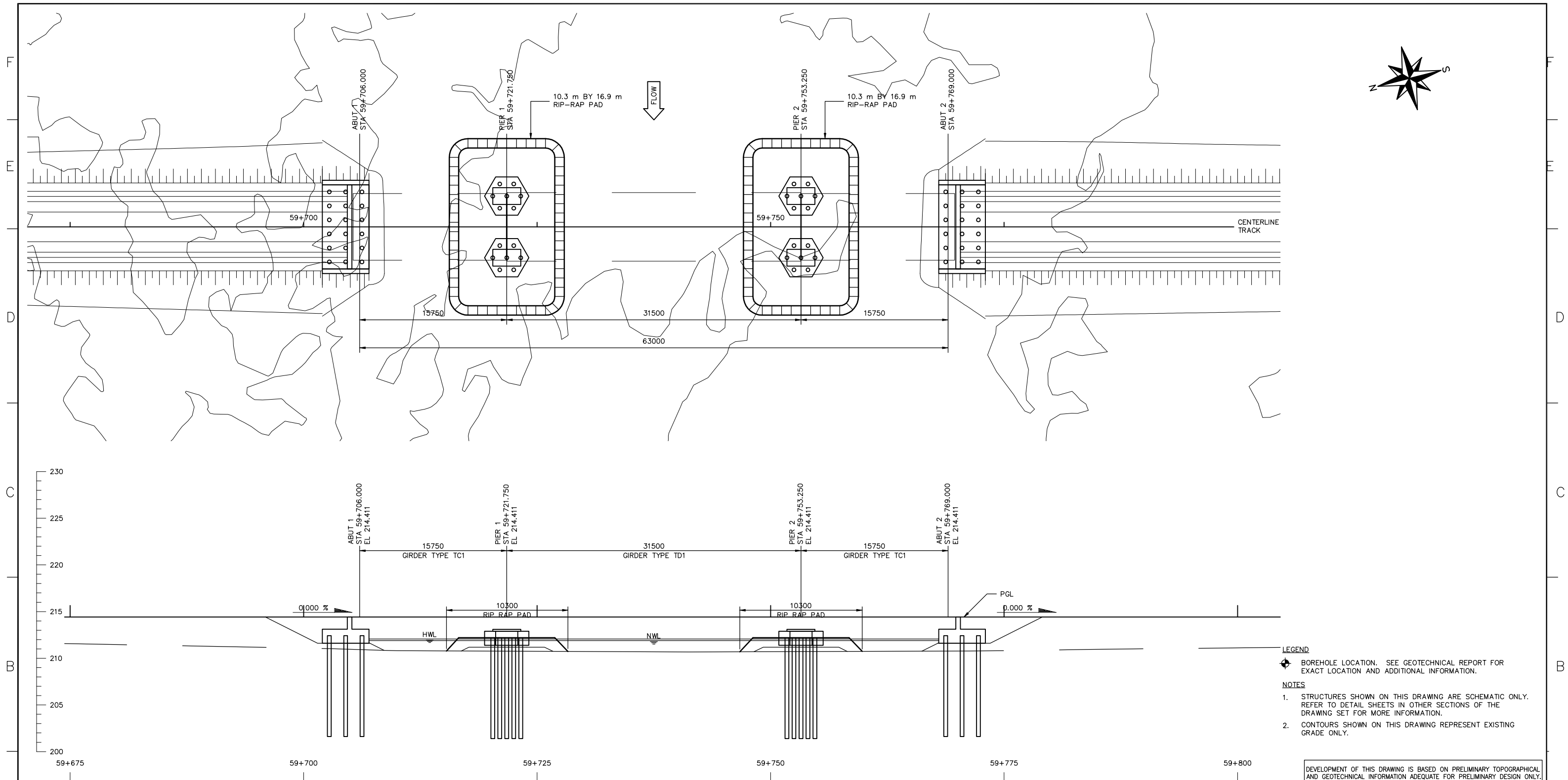
[illegible]



1. STRUCTURES SHOWN ON THIS DRAWING ARE SCHEMATIC ONLY. REFER TO DETAIL SHEETS IN OTHER SECTIONS OF THE DRAWING SET FOR MORE INFORMATION.
2. CONTOURS SHOWN ON THIS DRAWING REPRESENT EXISTING GRADE ONLY.
3. THE REFERENCE POINT LOCATING THIS STRUCTURE IS AT THE INTERSECTION BETWEEN THE ALIGNMENT REFERENCE LINE AND THE LOW STATION ABUTMENT BEARING CENTERLINE.
THIS POINT IS LOCATED AS FOLLOWS:
STA 59+706.000
E 598872.974 N 782605.115 ZONE 17W
LATITUDE 70°56'13.895" N
LONGITUDE 78°17'12.447" W
4. ALL DIMENSIONS ARE GIVEN ALONG THE CONTROL LINE UNO. THE CONTROL LINE IS ALSO THE PROFILE GRADE LINE (PGL) AND IS LOCATED AT CENTERLINE TRACK / TOP OF SUB-BALLAST.
5. THE WATERCOURSES CROSSED BY THIS STRUCTURE ARE REFERENCED AS NUMBERS 109 AND 110 IN THE REPORT 'FISH HABITAT ASSESSMENTS ALONG THE STEENSBY RAIL CORRIDOR' PREPARED BY KNIGHT PIESOLD CONSULTING AND DATED FEBRUARY 2008.
6. HIGH WATER LEVEL (HWL) = 212.060
HWL FREEBOARD = 1.391 METERS
7. NORMAL WATER LEVEL (NWL) = 211.900
NWL FREEBOARD = 1.551 METERS

DEVELOPMENT OF THIS DRAWING IS BASED ON PRELIMINARY TOPOGRAPHICAL
AND GEOTECHNICAL INFORMATION ADEQUATE FOR PRELIMINARY DESIGN ONLY.
IT SHOULD NOT BE USED FOR CONSTRUCTION OR ANY OTHER PURPOSES.

[illegible]

[illegible]