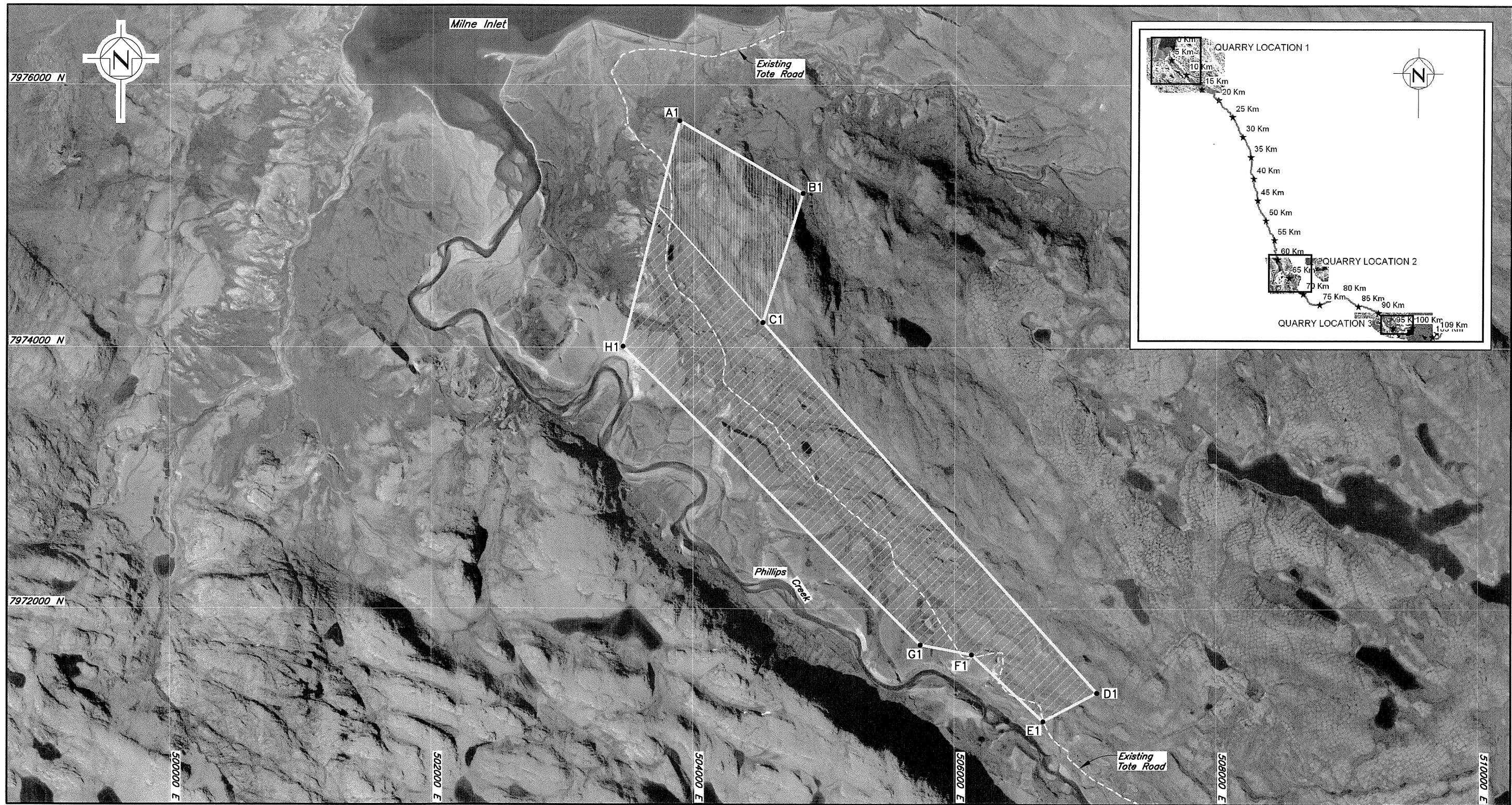




XREF FILE(S): IMAGE FILE(S): B-53 B-54 Baffinland logo-bq corp\_bqw C-53 C-54 Quarry locations and chainage



LINE	BEARING	DISTANCE
A1-B1	S59°42'32"E	1092.91m
B1-C1	S17°08'22"W	1030.56m
C1-D1	S42°05'38"E	3821.50m
D1-E1	S61°55'40"W	465.56m
E1-F1	N47°02'20"W	748.43m
F1-G1	N79°04'36"W	397.45m
G1-H1	N44°54'51"W	3229.07m
H1-A1	N13°56'55"E	1771.02m

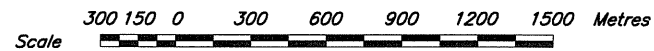
POINT	NORTHING	EASTING
A1	7975727.24	503886.57
B1	7975175.99	504830.27
C1	7974191.18	504526.56
D1	7971355.44	507088.28
E1	7971136.36	506677.49
F1	7971646.41	506129.78
G1	7971721.73	505739.53
H1	7974008.44	503459.66

LEGEND:


-  Maximum Extent of Rock Quarrying
-  Maximum Extent of Identified Borrow Sources
- Existing Tote Road

NOTES:

- Airphotos provided by Eagle Mapping (2005).
- Coordinate grid is shown in UTM (NAD 83) and is in metres.



**Knight Piésold**  
CONSULTING

  
Iron Mines Corporation

MARY RIVER PROJECT – BULK SAMPLING PROGRAM

MILNE INLET BORROW AREA  
PLAN

THIS DRAWING WAS PREPARED FOR OUR CLIENT. ANY USE WHICH A THIRD PARTY MAKES OF IT, OR ANY RELIANCE ON OR DECISIONS BASED ON IT, ARE THE RESPONSIBILITY OF SUCH THIRD PARTY. KNIGHT PIÉSOLD ACCEPTS NO RESPONSIBILITY FOR DAMAGES, IF ANY, SUFFERED BY THE THIRD PARTY AS A RESULT OF DECISIONS MADE OR ACTIONS BASED ON THIS DRAWING. COPIES RESULTING FROM ELECTRONIC TRANSFER OR REPRODUCTION OF THIS DRAWING ARE UNCONTROLLED AND MAY NOT BE THE MOST RECENT REVISION.

P/A NO.  
**NB102-00181/10**

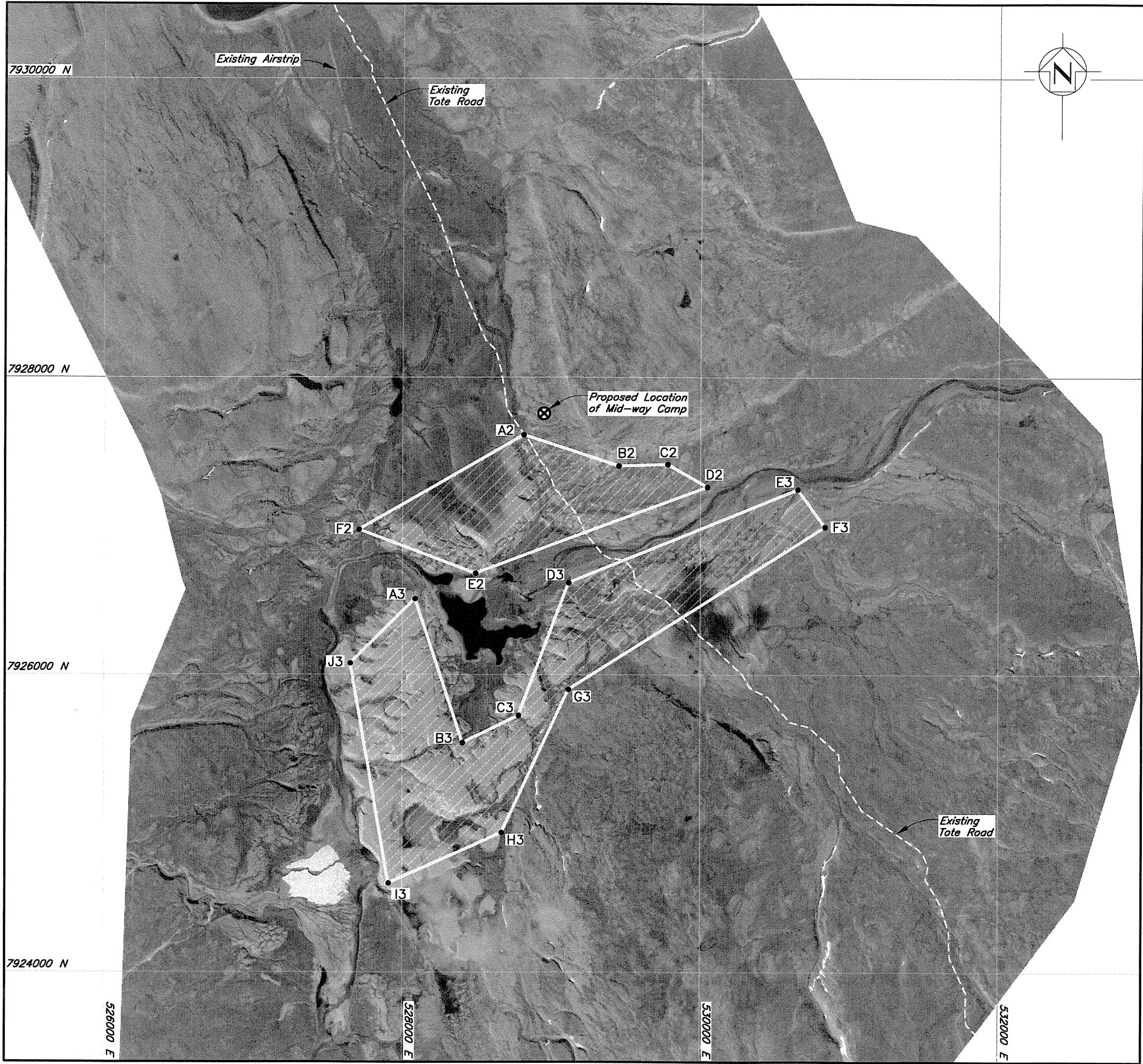
DRG. NO.  
**200**

REV.  
**0**

DRG. NO.	DESCRIPTION	REV.	DATE	DESCRIPTION	DESIGN	DRAWN	CHK'D	APP'D	REV.	DATE	DESCRIPTION	DESIGN	DRAWN	CHK'D	APP'D
REFERENCE DRAWINGS									REVISIONS						
									REVISIONS						



XREF FILE(S): IMAGE FILE(S): Baffinland logo-big corp-h+w F-41 C-42 Quarry locations and change



Scale 300 150 0 300 600 900 1200 1500 Metres

DRG. NO.	DESCRIPTION	REV.	DATE	DESCRIPTION	DESIGN	DRAWN	CHK'D	APP'D	REV.	DATE	DESCRIPTION	DESIGN	DRAWN	CHK'D	APP'D
REFERENCE DRAWINGS									REVISIONS						
									REVISIONS						

0 13JUL07 ISSUED IN FINAL

KH

MD

P/A NO.

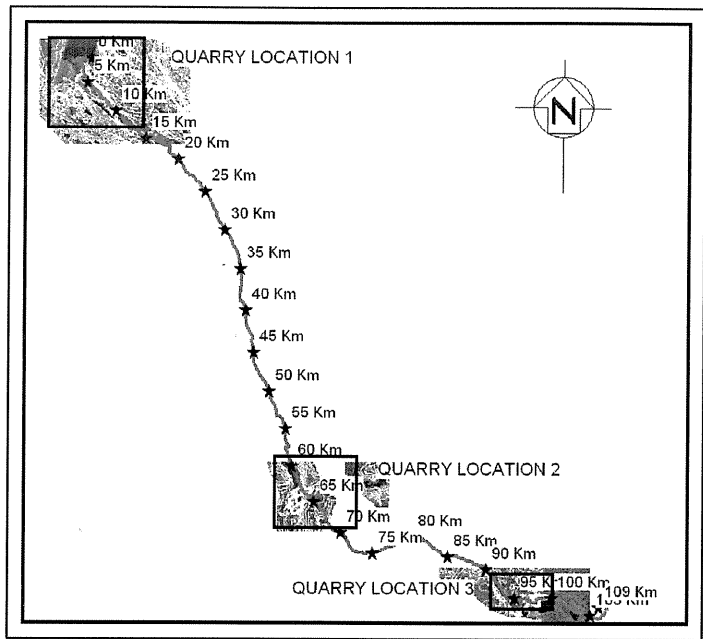
NB102-00181/10

DRG. NO.

201

REV.

0



LINE	BEARING	DISTANCE
A2-B2	S71°51'57"E	669.72m
B2-C2	N88°03'30"E	328.14m
C2-D2	S60°22'37"E	307.48m
D2-E2	S69°28'39"W	1659.41m
E2-F2	N69°25'48"W	839.76m
F2-A2	N20°09'26"E	1278.10m

POINT	NORTHING	EASTING
A2	7927613.05	528814.80
B2	7927404.60	529451.25
C2	7927415.72	529779.21
D2	7927263.73	530046.50
E2	7926681.99	528492.40
F2	7926977.04	527706.19

LINE	BEARING	DISTANCE
A3-B3	S18°19'24"E	1021.17m
B3-C3	N64°12'18"E	419.49m
C3-D3	N20°28'03"E	954.1m
D3-E3	N67°42'52"E	1659.92m
E3-F3	S35°56'32"E	311.01m
F3-G3	S57°29'17"W	2037.86m
G3-H3	S24°53'38"W	1061.75m
H3-I3	S65°56'59"W	834.09m
I3-J3	N9°53'48"W	1501.62m
J3-A3	N45°00'00"E	614.25m

POINT	NORTHING	EASTING
A3	7926511.21	528083.87
B3	7925541.82	528404.91
C3	7925724.36	528782.60
D3	7926618.23	529116.22
E3	7927247.71	530652.15
F3	7926995.91	530834.71
G3	7925900.62	529116.22
H3	7924937.51	528669.29
I3	7924597.59	527907.61
J3	7926076.87	527649.53

LEGEND:

Maximum Extent of Identified Borrow Sources

Existing Tote Road

NOTES:

- Airphotos provided by Eagle Mapping (2005).
- Coordinate grid is shown in UTM (NAD 83) and is in metres.

Knight Piésold  
CONSULTING

Baffinland  
Iron Mines Corporation

MARY RIVER PROJECT - BULK SAMPLING PROGRAM

MID-WAY CAMP BORROW AREA  
PLAN

THIS DRAWING WAS PREPARED FOR OUR CLIENT. ANY USE WHICH A THIRD PARTY MAKES OF IT, OR ANY RELIANCE ON OR DECISIONS BASED ON IT, ARE THE RESPONSIBILITY OF SUCH THIRD PARTY. KNIGHT PIÉSOLD ACCEPTS NO RESPONSIBILITY FOR DAMAGES, IF ANY, SUFFERED BY THE THIRD PARTY AS A RESULT OF DECISIONS MADE OR ACTIONS BASED ON THIS DRAWING. COPIES RESULTING FROM ELECTRONIC TRANSFER OR REPRODUCTION OF THIS DRAWING ARE UNCONTROLLED AND MAY NOT BE THE MOST RECENT REVISION.

NORTH BAY ON. CREATED BY: ---. SAVED: \\102-00181-10\Assignment\Kead\Draw\03-11\ISSUED IN FINAL\_REV-0-20180\_7/12/2007 9:30:46 AM. PRINTED: 7/12/2007 9:31:09 AM. Layout1.dgn