

Site Number	Northing (m)	Easting (m)	Chainage	Crossing Type	Crossing Details				
					Required No. of CSP Culverts		Emergency Overflow Swale		
					Ø = 1.2 m	Ø = 1.0 m	Length (L), m	Depth (y), m	Slopes (H:V)
BG01	7914919	557991	99+672	Medium-B	1	-	9.5	0.3	3:1
BG04	7915113	553250	94+148	Medium-C	2	-	4.0	0.3	3:1
BG24	7918878	548766	87+710	Medium-A	3	-	-	-	-
CV047	7924326	531667	66+426	Medium-A	2	-	-	-	-
CV060	7930342	527622	58+856	Medium-C	-	2	4.2	0.4	3:1
CV091	7944176	523111	42+961	Medium-A	-	3	-	-	-
CV092	7944187	523107	42+949	Medium-A	-	3	-	-	-
CV098	7948306	522197	38+525	Medium-B	-	1	5.4	0.3	3:1
CV104	7952788	521732	33+794	Medium-A	2	-	-	-	-
CV111	7954524	521355	31+990	Medium-B	-	1	6.2	0.3	3:1
CV114	7956528	520278	29+647	Medium-B	-	1	6.3	0.3	3:1
CV224	7915044	556238	97+758	Medium-A	-	2	-	-	-
CV087	7941040	523704	46+223	Medium-A	3	-	-	-	-

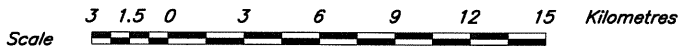
Notes:
1. Crossings designed for peak flow from the 1:10 yr return storm.
2. Crossing Type: Medium-A - multiple culvert; Medium-B - single culvert with swale; Medium-C - multiple culvert with swale.

LEGEND:

- Water
- Mine Facilities area
- Existing Road
- Airstrip
- Exploration Camp Location
- Medium Crossing

NOTES:

- Mapping is from Natural Resources Canada National Topographic Data Base 1:250000 and provided by Baffinland Iron Mines Corporation.
- Contours are in metres. Contour interval varies.
- Coordinate grid is shown in UTM (NAD 83) Zone 17 and is in metres.



Knight Piésold
CONSULTING

Baffinland
Iron Mines Corporation

MARY RIVER PROJECT – BULK SAMPLING PROGRAM

THIS DRAWING WAS PREPARED FOR OUR CLIENT. ANY USE WHICH A THIRD PARTY MAKES OF IT, OR ANY RELIANCE ON OR DECISIONS BASED ON IT, ARE THE RESPONSIBILITY OF SUCH THIRD PARTY. KNIGHT PIÉSOLD ACCEPTS NO RESPONSIBILITY FOR DAMAGES IF ANY, SUFFERED BY THE THIRD PARTY AS A RESULT OF DECISIONS MADE OR ACTIONS BASED ON THIS DRAWING. COPIES RESULTING FROM ELECTRONIC TRANSFER OR REPRODUCTION OF THIS DRAWING ARE UNCONTROLLED AND MAY NOT BE THE MOST RECENT REVISION.

MEDIUM CROSSINGS LOCATIONS PLAN

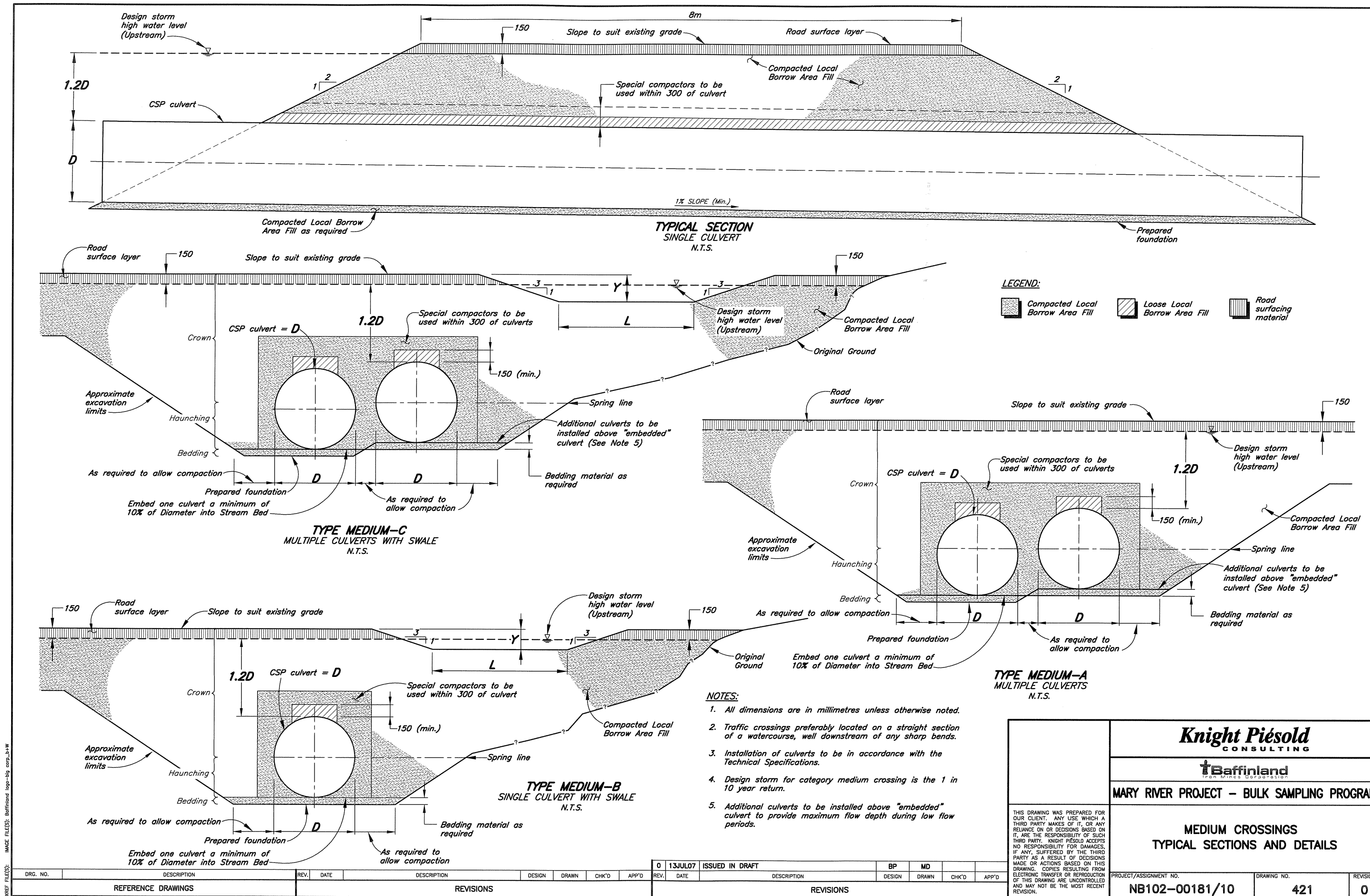
PROJECT/ASSIGNMENT NO.
NB102-00181/10

DRAWING NO.
420

REVISION
0

XREF FILE(S): Base Map, Milne Road, Culverts and Crossings IMAGE FILE(S): Baffinland logo-big corp_b-w

									0	13JUL07	ISSUED IN FINAL				KH/BP	MD					
DRG. NO.	DESCRIPTION			REV.	DATE	DESCRIPTION			DESIGN	DRAWN	CHK'D	APP'D	REV.	DATE	DESCRIPTION			DESIGN	DRAWN	CHK'D	APP'D
REFERENCE DRAWINGS				REVISIONS								REVISIONS									



LEGEND:

	Compacted Local Borrow Area Fill		Loose Local Borrow Area Fill		Road surfacing material
--	----------------------------------	--	------------------------------	--	-------------------------

- NOTES:**
1. All dimensions are in millimetres unless otherwise noted.
 2. Traffic crossings preferably located on a straight section of a watercourse, well downstream of any sharp bends.
 3. Installation of culverts to be in accordance with the Technical Specifications.
 4. Design storm for category medium crossing is the 1 in 10 year return.
 5. Additional culverts to be installed above "embedded" culvert to provide maximum flow depth during low flow periods.

**TYPE MEDIUM-A
MULTIPLE CULVERTS
N.T.S.**

**TYPE MEDIUM-B
SINGLE CULVERT WITH SWALE
N.T.S.**

**TYPE MEDIUM-C
MULTIPLE CULVERTS WITH SWALE
N.T.S.**

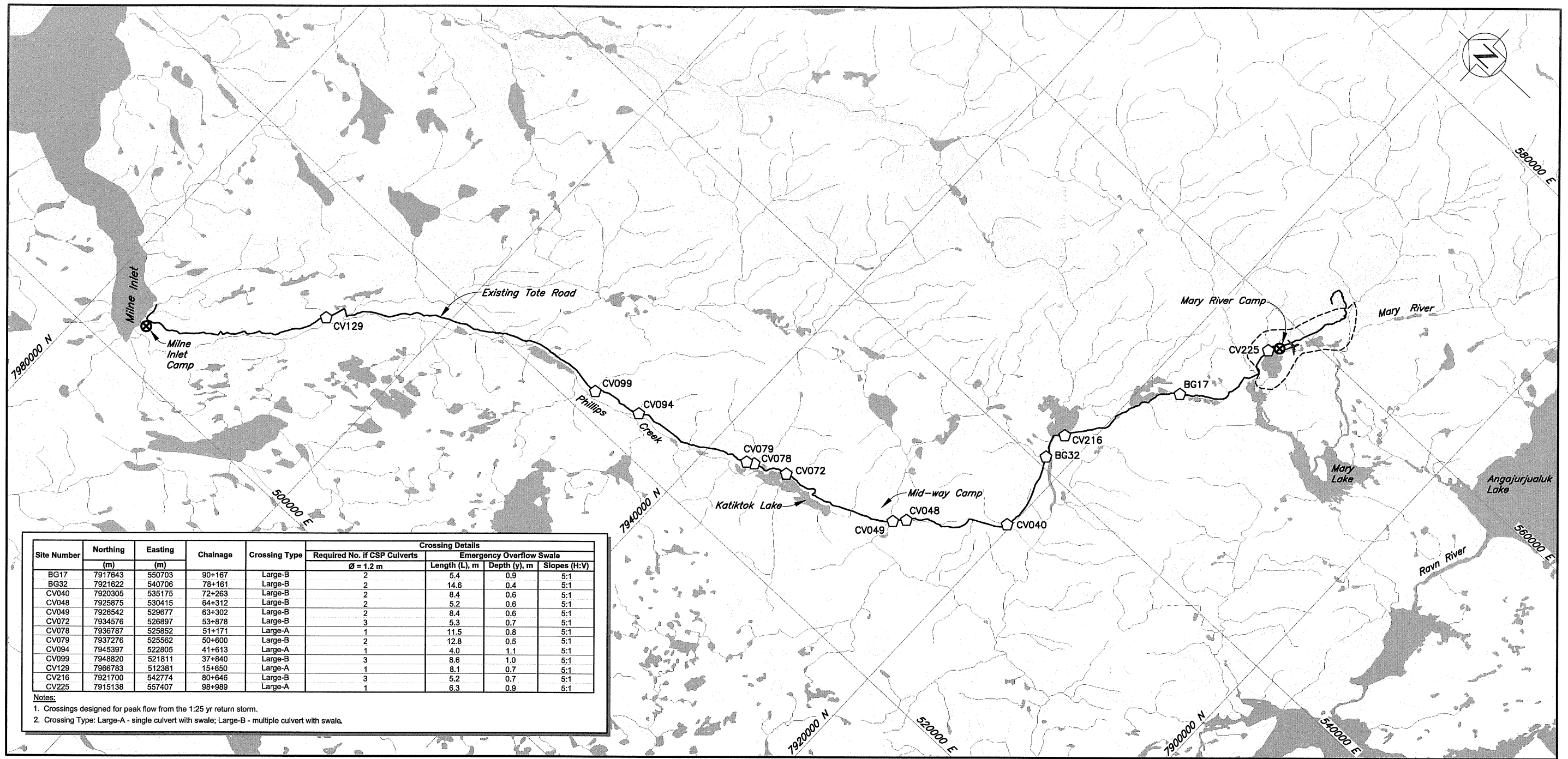
**TYPICAL SECTION
SINGLE CULVERT
N.T.S.**

 		MARY RIVER PROJECT - BULK SAMPLING PROGRAM		
		MEDIUM CROSSINGS TYPICAL SECTIONS AND DETAILS		
<small>THIS DRAWING WAS PREPARED FOR OUR CLIENT. ANY USE WHICH A THIRD PARTY MAKES OF IT, OR ANY RELIANCE ON OR DECISIONS BASED ON IT, ARE THE RESPONSIBILITY OF SUCH THIRD PARTY. KNIGHT PIESOLD ACCEPTS NO RESPONSIBILITY FOR DAMAGES, IF ANY, SUFFERED BY THE THIRD PARTY AS A RESULT OF DECISIONS MADE OR ACTIONS BASED ON THIS DRAWING. COPIES RESULTING FROM ELECTRONIC TRANSFER OR REPRODUCTION OF THIS DRAWING ARE UNCONTROLLED AND MAY NOT BE THE MOST RECENT REVISION.</small>		PROJECT/ASSIGNMENT NO.	DRAWING NO.	REVISION
		NB102-00181/10	421	0

XFREF FILE(S): Baffinland logo-big corp_b-w

NORTH BAY ONL. CREATED BY: mdrnms. SWED: I:\102-00181-10\Assignment\Draw\03_ISSUED IN FINAL_REV-042180. 7/12/2007 11:39:47 AM. LAYOUT: jphmns. PRINTED: 7/12/2007 11:39:57 AM.

XREF FILE(S): Base Map, Mine Route, Culverts and Crossings IMAGE FILE(S): Baffinland logo-big corp_bhw



LEGEND:

- Water
- Mine Facilities area
- Existing Road
- Airstrip
- Exploration Camp Location
- Large Crossing

NOTES:

- Mapping is from Natural Resources Canada National Topographic Data Base 1:250000 and provided by Baffinland Iron Mines Corporation.
- Contours are in metres. Contour interval varies.
- Coordinate grid is shown in UTM (NAD 83) Zone 17 and is in metres.

Scale 3 1.5 0 3 6 9 12 15 Kilometres

Knight Piésold
CONSULTING

Baffinland
Iron Mines Corporation

MARY RIVER PROJECT – BULK SAMPLING PROGRAM

LARGE CROSSINGS LOCATIONS PLAN

THIS DRAWING WAS PREPARED FOR OUR CLIENT. ANY USE WHICH A THIRD PARTY MAKES OF IT, OR ANY RELIANCE ON OR DECISIONS BASED ON IT, ARE THE RESPONSIBILITY OF SUCH THIRD PARTY. KNIGHT PIÉSOLD ACCEPTS NO RESPONSIBILITY FOR DAMAGES, IF ANY, SUFFERED BY THE THIRD PARTY AS A RESULT OF DECISIONS MADE OR ACTIONS BASED ON THIS DRAWING. COPIES RESULTING FROM ELECTRONIC TRANSFER OR REPRODUCTION OF THIS DRAWING ARE UNCONTROLLED AND MAY NOT BE THE MOST RECENT REVISION.

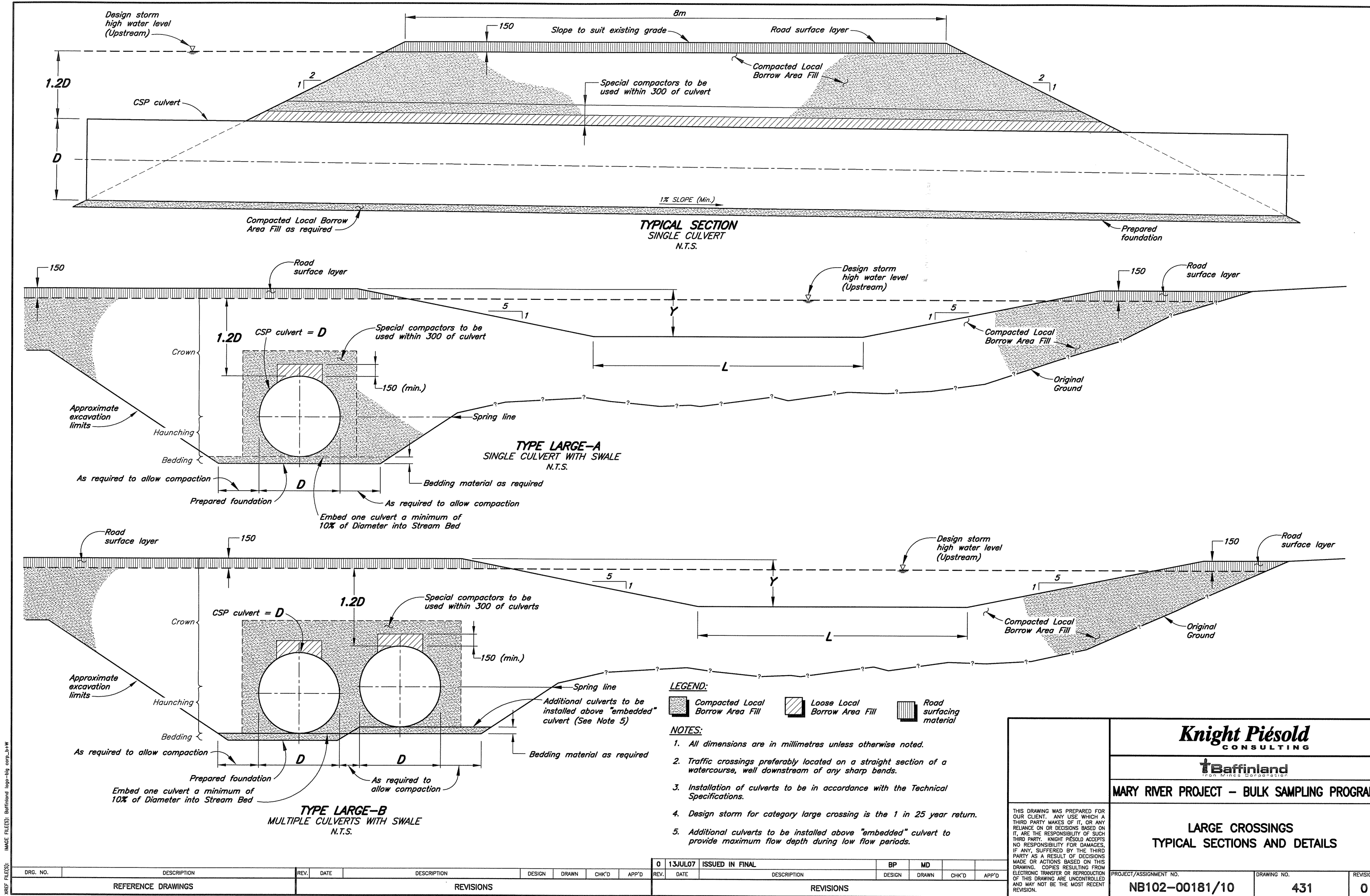
PROJECT/ASSIGNMENT NO.
NB102-00181/10

DRAWING NO.
430

REVISION
0

DRG. NO.	DESCRIPTION	REV.	DATE	DESCRIPTION	DESIGN	DRAWN	CHK'D	APP'D	0 13JUL07 ISSUED IN FINAL	KH/BP	MD		
REFERENCE DRAWINGS									REVISIONS				
									REVISIONS				

NORTH BAY ON. CREATED BY: mdmeters. SAVED: I:\02-00181-10\Assignment\Lead\Draw\03_ISSUED IN FINAL_REV-01_43000_7/12/2007 9:55:41 AM. Layout: r.johnson. PRINTED: 7/12/2007 9:55:41 AM



LEGEND:

- Compacted Local Borrow Area Fill
- Loose Local Borrow Area Fill
- Road surfacing material

NOTES:

- All dimensions are in millimetres unless otherwise noted.
- Traffic crossings preferably located on a straight section of a watercourse, well downstream of any sharp bends.
- Installation of culverts to be in accordance with the Technical Specifications.
- Design storm for category large crossing is the 1 in 25 year return.
- Additional culverts to be installed above "embedded" culvert to provide maximum flow depth during low flow periods.

XREF FILE(S)	DRG. NO.		DESCRIPTION		REV.	DATE	DESCRIPTION		DESIGN	DRAWN	CHK'D	APP'D	0	13JUL07	ISSUED IN FINAL		BP	MD			MADE OR ACTIONS BASED ON THIS DRAWING. COPIES RESULTING FROM ELECTRONIC DRAWING OR REPRODUCTION OF THIS DRAWING ARE UNCONTROLLED AND MAY NOT BE THE MOST RECENT REVISION.	PROJECT/ASSIGNMENT NO. NB102-00181/10	DRAWING NO. 431	REVISION NO. 0		
													REV.	DATE	DESCRIPTION		DESIGN	DRAWN	CHK'D	APP'D					REVISIONS	
	REFERENCE DRAWINGS												REVISIONS												REVISIONS	

Knight Piésold
CONSULTING

Baffinland
Iron Mines Corporation

MARY RIVER PROJECT – BULK SAMPLING PROGRAM

LARGE CROSSINGS
TYPICAL SECTIONS AND DETAILS

THIS DRAWING WAS PREPARED FOR OUR CLIENT. ANY USE WHICH A THIRD PARTY MAKES OF IT, OR ANY RELIANCE ON OR DECISIONS BASED ON IT, ARE THE RESPONSIBILITY OF SUCH THIRD PARTY. KNIGHT PIÉSOLD ACCEPTS NO RESPONSIBILITY FOR DAMAGES, IF ANY, SUFFERED BY THE THIRD PARTY AS A RESULT OF DECISIONS MADE OR ACTIONS BASED ON THIS DRAWING. COPIES RESULTING FROM ELECTRONIC TRANSFER OR REPRODUCTION OF THIS DRAWING ARE UNCONTROLLED AND MAY NOT BE THE MOST RECENT REVISION.

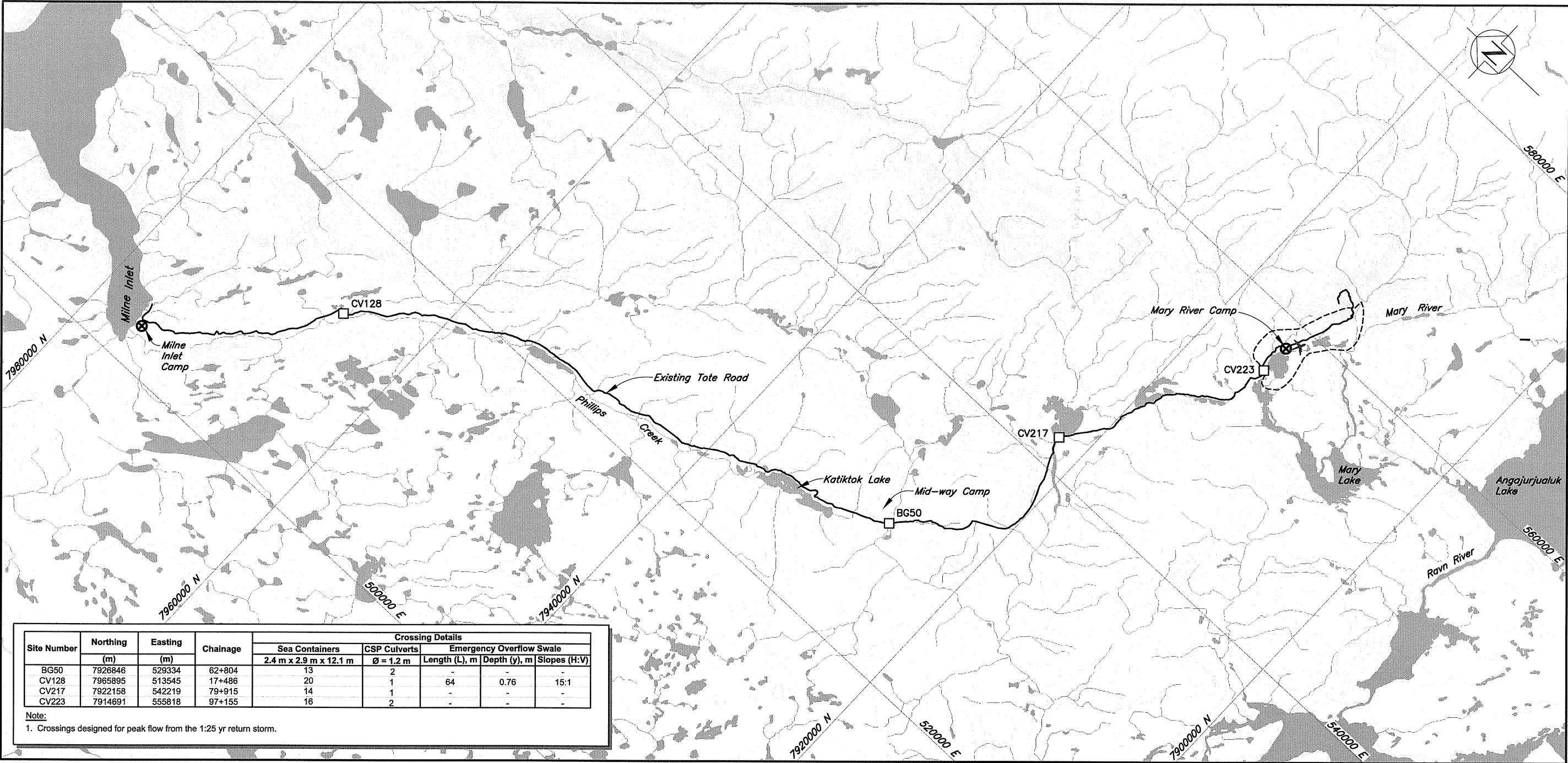
PROJECT/ASSIGNMENT NO.
NB102-00181/10

DRAWING NO.
431

REVISION
0

XREF FILE(S): Baffinland logo-big corp.-h-w

NORTH BAY ON. CREATED BY: mdmcmrs. SAVED: I:\102-00181-10\Assignment\Lead\Draw\03_ISSUED IN FINAL_REV-0\431RD_0_12/2007 2:39:21 PM. PRINTED: 7/12/2007 9:56:42 AM. Layout: rjohman



Site Number	Northing (m)	Easting (m)	Chainage	Crossing Details				
				Sea Containers	CSP Culverts	Emergency Overflow Swale		
				2.4 m x 2.9 m x 12.1 m	Ø = 1.2 m	Length (L), m	Depth (y), m	Slopes (H:V)
BG50	7926846	529334	62+804	13	2	-	-	-
CV128	7965895	513545	17+486	20	1	64	0.76	15:1
CV217	7922158	542219	79+915	14	1	-	-	-
CV223	7914691	555818	97+155	16	2	-	-	-

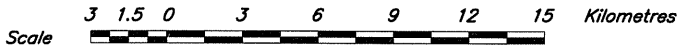
Note:
1. Crossings designed for peak flow from the 1:25 yr return storm.

LEGEND:

- Water
- Mine Facilities area
- Existing Road
- Airstrip
- Exploration Camp Location
- Extra-Large Crossing

NOTES:

- Mapping is from Natural Resources Canada National Topographic Data Base 1:250000 and provided by Baffinland Iron Mines Corporation.
- Contours are in metres. Contour interval varies.
- Coordinate grid is shown in UTM (NAD 83) Zone 17 and is in metres.



Knight Piésold
CONSULTING

Baffinland
Iron Mines Corporation

MARY RIVER PROJECT – BULK SAMPLING PROGRAM

THIS DRAWING WAS PREPARED FOR OUR CLIENT. ANY USE WHICH A THIRD PARTY MAKES OF IT, OR ANY RELIANCE ON OR DECISIONS BASED ON IT, ARE THE RESPONSIBILITY OF SUCH THIRD PARTY. KNIGHT PIÉSOLD ACCEPTS NO RESPONSIBILITY FOR DAMAGES, IF ANY, SUFFERED BY THE THIRD PARTY AS A RESULT OF DECISIONS MADE OR ACTIONS BASED ON THIS DRAWING. COPIES RESULTING FROM ELECTRONIC TRANSFER OR REPRODUCTION OF THIS DRAWING ARE UNCONTROLLED AND MAY NOT BE THE MOST RECENT REVISION.

EXTRA-LARGE CROSSINGS LOCATIONS
PLAN

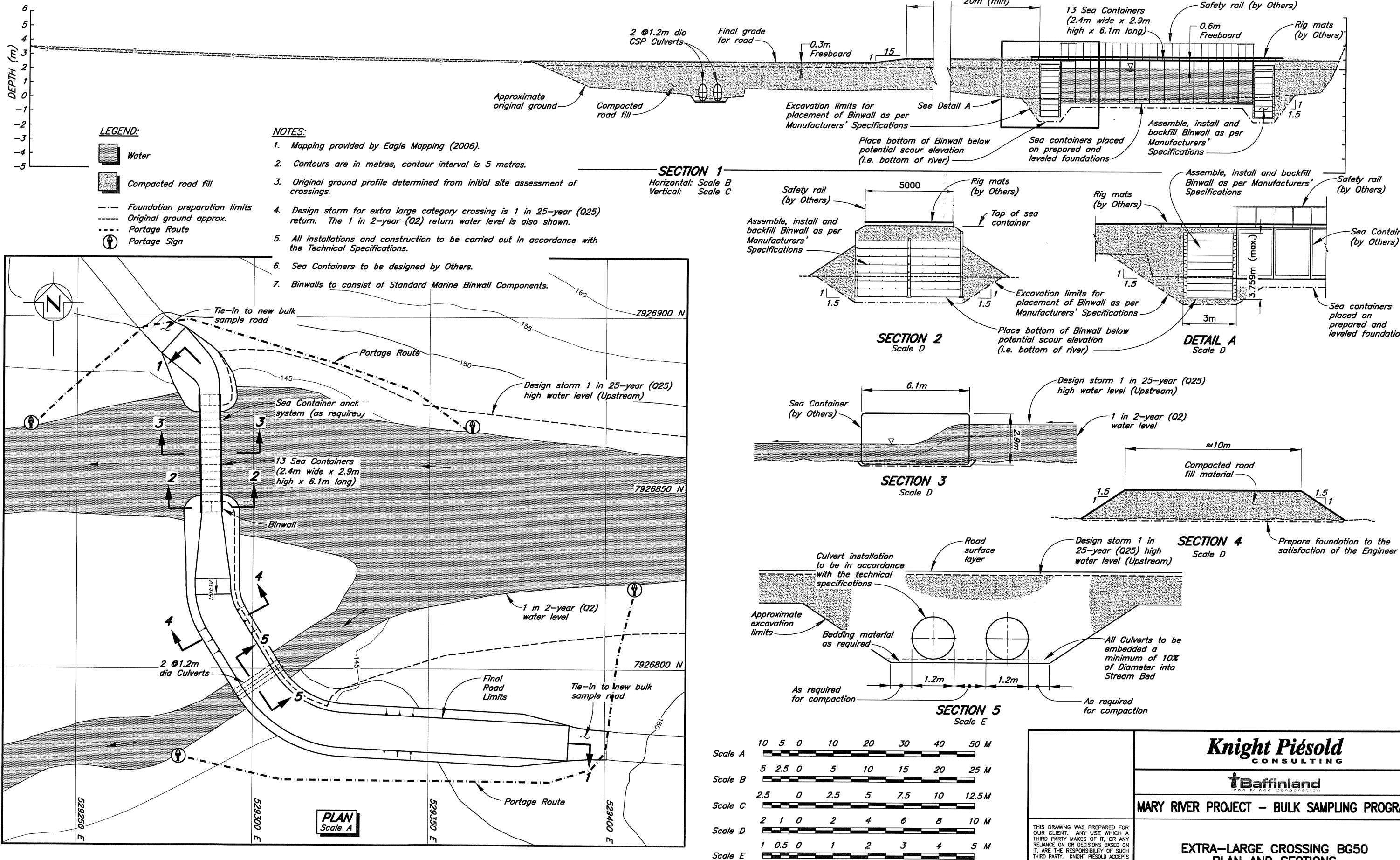
PROJECT/ASSIGNMENT NO.
NB102-00181/10

DRAWING NO.
440

REVISION
0

XREF FILE(S): Base Map, Mine Route, Culverts and Crossings IMAGE FILE(S): Baffinland logo-big corp.b+w

NORTH: BY ON. CREATED BY: mcdmrs. SAVED: \\102-00181-10\Assignment\Lead\Draw\03_ISSUED IN FINAL_REV-014.dwg, 7/12/2007 9:55:04 AM. PRINTED: 7/12/2007 9:55:33 AM. Layout1: jphnson



XREF FILES: Major Crossings Mapping: binwall IMAGE FILES: Baffinland logo-big corp_b-w Baffinland logo-big corp_b-w

NORTH BAY ON. CREATED BY: mndmms SAVED: I:\02-00181-10\Assignment\Head\Draw\03_ISSUED IN FINAL_REV-0144260_7/13/2007 2:54:43 PM PRINTED: 7/13/2007 2:55:19 PM Layout1: mndmms

DRG. NO.	DESCRIPTION	REV.	DATE	DESCRIPTION	DESIGN	DRAWN	CHK'D	APP'D	REV.	DATE	DESCRIPTION	DESIGN	DRAWN	CHK'D	APP'D
REFERENCE DRAWINGS									REVISIONS						

0 13JUL07 ISSUED IN FINAL		BP	MD/SIR	
		DESIGN	DRAWN	CHK'D
		REVISIONS		

10 5 0 10 20 30 40 50 M		Scale A	
5 2.5 0 5 10 15 20 25 M		Scale B	
2.5 0 2.5 5 7.5 10 12.5 M		Scale C	
2 1 0 2 4 6 8 10 M		Scale D	
1 0.5 0 1 2 3 4 5 M		Scale E	

10 5 0 10 20 30 40 50 M		Scale A	
5 2.5 0 5 10 15 20 25 M		Scale B	
2.5 0 2.5 5 7.5 10 12.5 M		Scale C	
2 1 0 2 4 6 8 10 M		Scale D	
1 0.5 0 1 2 3 4 5 M		Scale E	

10 5 0 10 20 30 40 50 M		Scale A	
5 2.5 0 5 10 15 20 25 M		Scale B	
2.5 0 2.5 5 7.5 10 12.5 M		Scale C	
2 1 0 2 4 6 8 10 M		Scale D	
1 0.5 0 1 2 3 4 5 M		Scale E	

10 5 0 10 20 30 40 50 M		Scale A	
5 2.5 0 5 10 15 20 25 M		Scale B	
2.5 0 2.5 5 7.5 10 12.5 M		Scale C	
2 1 0 2 4 6 8 10 M		Scale D	
1 0.5 0 1 2 3 4 5 M		Scale E	

10 5 0 10 20 30 40 50 M		Scale A	
5 2.5 0 5 10 15 20 25 M		Scale B	
2.5 0 2.5 5 7.5 10 12.5 M		Scale C	
2 1 0 2 4 6 8 10 M		Scale D	
1 0.5 0 1 2 3 4 5 M		Scale E	

10 5 0 10 20 30 40 50 M		Scale A	
5 2.5 0 5 10 15 20 25 M		Scale B	
2.5 0 2.5 5 7.5 10 12.5 M		Scale C	
2 1 0 2 4 6 8 10 M		Scale D	
1 0.5 0 1 2 3 4 5 M		Scale E	

10 5 0 10 20 30 40 50 M		Scale A	
5 2.5 0 5 10 15 20 25 M		Scale B	
2.5 0 2.5 5 7.5 10 12.5 M		Scale C	
2 1 0 2 4 6 8 10 M		Scale D	
1 0.5 0 1 2 3 4 5 M		Scale E	

10 5 0 10 20 30 40 50 M		Scale A	
5 2.5 0 5 10 15 20 25 M		Scale B	
2.5 0 2.5 5 7.5 10 12.5 M		Scale C	
2 1 0 2 4 6 8 10 M		Scale D	
1 0.5 0 1 2 3 4 5 M		Scale E	

10 5 0 10 20 30 40 50 M		Scale A	
5 2.5 0 5 10 15 20 25 M		Scale B	
2.5 0 2.5 5 7.5 10 12.5 M		Scale C	
2 1 0 2 4 6 8 10 M		Scale D	
1 0.5 0 1 2 3 4 5 M		Scale E	

10 5 0 10 20 30 40 50 M		Scale A	
5 2.5 0 5 10 15 20 25 M		Scale B	
2.5 0 2.5 5 7.5 10 12.5 M		Scale C	
2 1 0 2 4 6 8 10 M		Scale D	
1 0.5 0 1 2 3 4 5 M		Scale E	

10 5 0 10 20 30 40 50 M		Scale A	
5 2.5 0 5 10 15 20 25 M		Scale B	
2.5 0 2.5 5 7.5 10 12.5 M		Scale C	
2 1 0 2 4 6 8 10 M		Scale D	
1 0.5 0 1 2 3 4 5 M		Scale E	

10 5 0 10 20 30 40 50 M		Scale A	
5 2.5 0 5 10 15 20 25 M		Scale B	
2.5 0 2.5 5 7.5 10 12.5 M		Scale C	
2 1 0 2 4 6 8 10 M		Scale D	
1 0.5 0 1 2 3 4 5 M		Scale E	

10 5 0 10 20 30 40 50 M		Scale A	
5 2.5 0 5 10 15 20 25 M		Scale B	
2.5 0 2.5 5 7.5 10 12.5 M		Scale C	
2 1 0 2 4 6 8 10 M		Scale D	
1 0.5 0 1 2 3 4 5 M		Scale E	

10 5 0 10 20 30 40 50 M		Scale A	
5 2.5 0 5 10 15 20 25 M		Scale B	
2.5 0 2.5 5 7.5 10 12.5 M		Scale C	
2 1 0 2 4 6 8 10 M		Scale D	
1 0.5 0 1 2 3 4 5 M		Scale E	

10 5 0 10 20 30 40 50 M		Scale A	
5 2.5 0 5 10 15 20 25 M		Scale B	
2.5 0 2.5 5 7.5 10 12.5 M		Scale C	
2 1 0 2 4 6 8 10 M		Scale D	
1 0.5 0 1 2 3 4 5 M		Scale E	

10 5 0 10 20 30 40 50 M		Scale A	
5 2.5 0 5 10 15 20 25 M		Scale B	
2.5 0 2.5 5 7.5 10 12.5 M		Scale C	
2 1 0 2 4 6 8 10 M		Scale D	
1 0.5 0 1 2 3 4 5 M		Scale E	

10 5 0 10 20 30 40 50 M		Scale A	
5 2.5 0 5 10 15 20 25 M		Scale B	
2.5 0 2.5 5 7.5 10 12.5 M		Scale C	
2 1 0 2 4 6 8 10 M		Scale D	
1 0.5 0 1 2 3 4 5 M		Scale E	

10 5 0 10 20 30 40 50 M		Scale A	
5 2.5 0 5 10 15 20 25 M		Scale B	
2.5 0 2.5 5 7.5 10 12.5 M		Scale C	
2 1 0 2 4 6 8 10 M		Scale D	
1 0.5 0 1 2 3 4 5 M		Scale E	

10 5 0 10 20 30 40 50 M		Scale A	
5 2.5 0 5 10 15 20 25 M		Scale B	
2.5 0 2.5 5 7.5 10 12.5 M		Scale C	
2 1 0 2 4 6 8 10 M		Scale D	
1 0.5 0 1 2 3 4 5 M		Scale E	

10 5 0 10 20 30 40 50 M		Scale A	
5 2.5 0 5 10 15 20 25 M		Scale B	
2.5 0 2.5 5 7.5 10 12.5 M		Scale C	
2 1 0 2 4 6 8 10 M		Scale D	
1 0.5 0 1 2 3 4 5 M		Scale E	

10 5 0 10 20 30 40 50 M		Scale A	
5 2.5 0 5 10 15 20 25 M		Scale B	
2.5 0 2.5 5 7.5 10 12.5 M		Scale C	
2 1 0 2 4 6 8 10 M		Scale D	
1 0.5 0 1 2 3 4 5 M		Scale E	

10 5 0 10 20 30 40 50 M		Scale A	
5 2.5 0 5 10 15 20 25 M		Scale B	
2.5 0 2.5 5 7.5 10 12.5 M		Scale C	
2 1 0 2 4 6 8 10 M		Scale D	
1 0.5 0 1 2 3 4 5 M		Scale E	

10 5 0 10 20 30 40 50 M		Scale A	
5 2.5 0 5 10 15 20 25 M		Scale B	
2.5 0 2.5 5 7.5 10 12.5 M		Scale C	
2 1 0 2 4 6 8 10 M		Scale D	
1 0.5 0 1 2 3 4 5 M		Scale E	

10 5 0 10 20 30 40 50 M		Scale A	
5 2.5 0 5 10 15 20 25 M		Scale B	
2.5 0 2.5 5 7.5 10 12.5 M		Scale C	
2 1 0 2 4 6 8 10 M		Scale D	
1 0.5 0 1 2 3 4 5 M		Scale E	

10 5 0 10 20 30 40 50 M		Scale A	
5 2.5 0 5 10 15 20 25 M		Scale B	
2.5 0 2.5 5 7.5 10 12.5 M		Scale C	
2 1 0 2 4 6 8 10 M		Scale D	
1 0.5 0 1 2 3 4 5 M		Scale E	

10 5 0 10 20 30 40 50 M		Scale A	
5 2.5 0 5 10 15 20 25 M		Scale B	
2.5 0 2.5 5 7.5 10 12.5 M		Scale C	
2 1 0 2 4 6 8 10 M		Scale D	
1 0.5 0 1 2 3 4 5 M		Scale E	

10 5 0 10 20 30 40 50 M		Scale A	
5 2.5 0 5 10 15 20 25 M		Scale B	
2.5 0 2.5 5 7.5 10 12.5 M		Scale C	
2 1 0 2 4 6 8 10 M		Scale D	
1 0.5 0 1 2 3 4 5 M		Scale E	

10 5 0 10 20 30 40 50 M		Scale A	
5 2.5 0 5 10 15 20 25 M		Scale B	
2.5 0 2.5 5 7.5 10 12.5 M		Scale C	
2 1 0 2 4 6 8 10 M		Scale D	
1 0.5 0 1 2 3 4 5 M		Scale E	

10 5
