

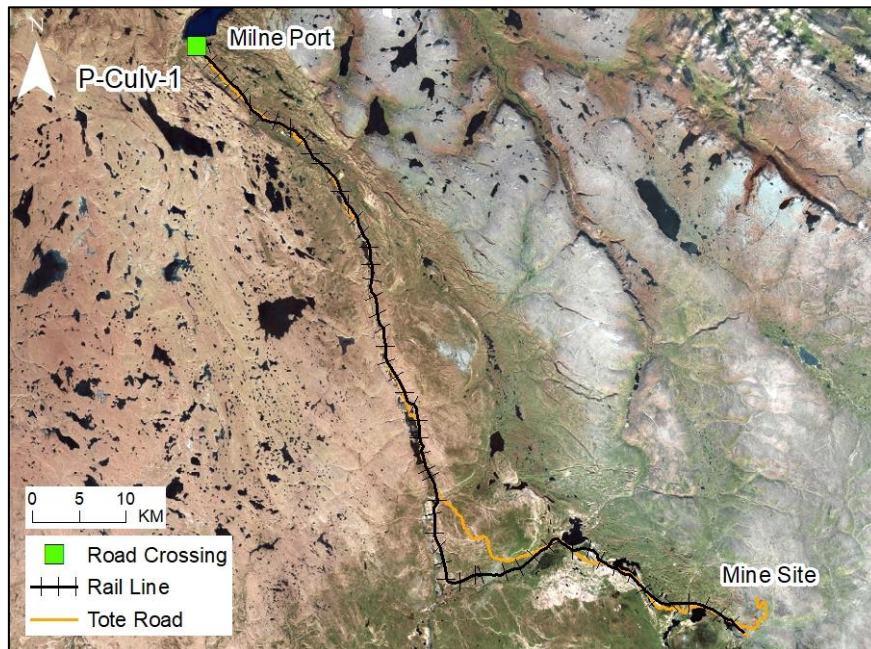
PORT SITE P-CULV-1

LOCATION AND CROSSING DESCRIPTION

Site ID:	P-Culv-1	Dates Surveyed:	18-Jun-19; 2-Sep-20	Waterbody Type:	Pond
Project Interaction:	Pond Infilling + Culvert	Centreline UTM Coordinates:	17W 503053 E 7975413 N	Culvert Length (m):	16.11
Number of Barrels:	1	Culvert Diameter/Span (mm):	600	Slope (%):	0.3

GENERAL PHYSICAL CHARACTERISTICS

Surface Area (m²):	2,845	Shoreline Length (m):	316	Drainage Basin Area (m²):	-
Maximum Depth (m):	0.3 (estimated)			Mean Depth (m):	-



SUMMARY

Port area infrastructure infills a portion of a pond at P-Culv-1. The pond is shallow with soft, fine sediment throughout. It has no defined inflow and the outflow is diffuse over terrestrial vegetation. The pond is of insufficient depth (0.3 m) to provide overwintering habitat for either species. Maximum depth in the encroachment/infill area is estimated to be <0.1 m.

There is a permanent barrier, vegetation berm, separating the outflow from habitat farther downstream. The pond is fishless and lacks connectivity to other waterbodies. This pond does not provide fish habitat.

BAFFINLAND IRON MINES
MARY RIVER PROJECT

 **North/South Consultants Inc.**
Aquatic Environment Specialists

FISH HABITAT:

ARCTIC CHAR - NO

NINESPINE STICKLEBACK - NO

PORT SITE P-CULV-1

BARRIERS

Upstream/ Downstream	UTM		Barrier Type			Height (m)	Gradient (°)	Description	Site Label
	Easting	Northing	1	2	3				
Downstream	503028	7975464	SSF					Permanent barrier: No surface water connectivity downstream from vegetation berm at this location	A
Upstream	NO INFLOW TO POND								



A

PORT SITE P-CULV-1

FISH HABITAT POTENTIAL

Nearest Potential Overwintering Habitat - ARCH: None

Distance to Nearest Potential Overwintering Habitat - ARCH (km): -

Overwintering Habitat Upstream of Site - ARCH (Y/N): No

Species	Spawning	Overwintering	Rearing	Adults Present
ARCH	N	N	N	N
NNST	N	N	N	N

FISHING SITES



PORT SITE P-CULV-1

FISHERIES DATA

Date: 18-Jun-19 **Temperature (°C):** 8.5 **Gear Used:** Backpack ElectrofisherVisual

Distance Fished (m): Entire pond perimeter **Duration Fished (seconds):** 450

Species	Season	Effort (Seconds)	Fish Captured	Fish Observed	CPUE (No. Fish/60 Seconds)	Length Range (mm)
ARCH	Spring	450	0	0	-	-
NNST	Spring	450	0	0	-	-

Date: 02-Sep-20 **Temperature (°C):** - **Gear Used:** Backpack ElectrofisherVisual

Distance Fished (m): Half of pond perimeter **Duration Fished (seconds):** 124

Species	Season	Effort (Seconds)	Fish Captured	Fish Observed	CPUE (No. Fish/60 Seconds)	Length Range (mm)
ARCH	Fall	124	0	0	-	-
NNST	Fall	124	0	0	-	-

ENCROACHMENT/INFILL HABITAT

Area	Fines (%)	Gravel (%)	Small Cobble (%)	Large Cobble (%)	Boulders (%)
Nearshore	100	0	0	0	0
Offshore	100	0	0	0	0

OTHER NOTES/OBSERVATIONS

No fish were captured via electrofishing or observed in the pond in spring 2019 or fall 2020. Due to its isolation and lack of sufficient depth for overwintering, the pond does not provide fish habitat.

PORT SITE P-CULV-1

18-JUN-19; 02-SEP-20



A



B



C



D



E



F

Photos 1. Photos at the site in spring 2019 (top) and fall 2020 (bottom): (A,D) looking south; (B,E) looking north; and (C,F) looking at the outflow.