

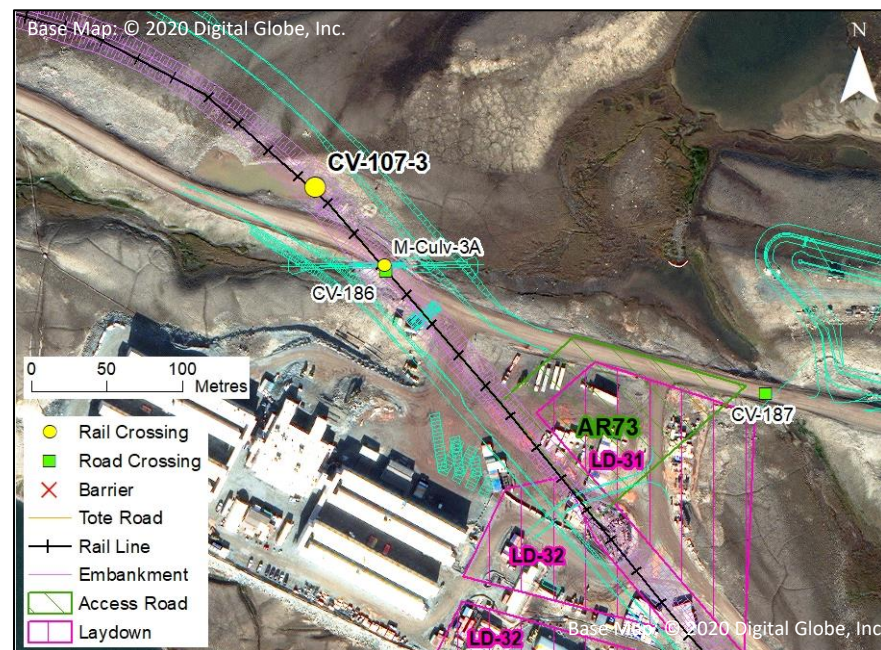
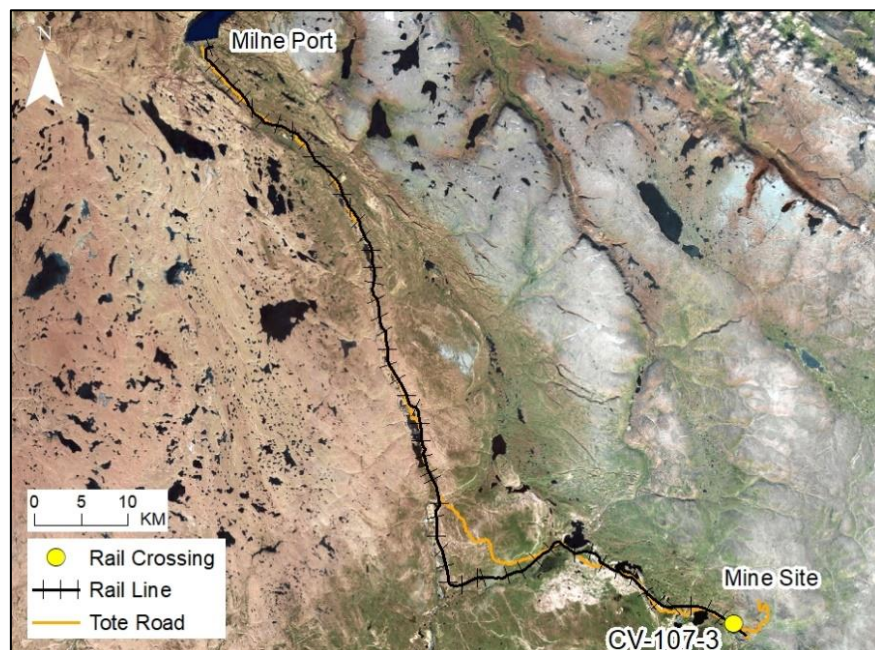
RAIL CV-107-3

LOCATION AND CROSSING DESCRIPTION

Site ID:	CV-107-3	Dates Surveyed:	23-Jun-19	Waterbody Type:	Pond
Project Interaction:	Rail Pond Infilling + Culvert	Centreline UTM Coordinates:	17W 560660 E 7913555 N	Culvert Length (m):	35
Number of Barrels:	1	Culvert Diameter/Span (mm):	600	Slope (%):	1

GENERAL PHYSICAL CHARACTERISTICS

Surface Area (m²):	1,169	Shoreline Length (m):	211	Drainage Basin Area (m²):	-
Maximum Depth (m):	0.5 (estimated)			Mean Depth (m):	-



SUMMARY

The rail crosses and infills a portion of a shallow (approximate maximum depth 0.5 m), turbid, isolated roadside pond that was a former borrow pit at site CV-107-3. The pond lacks an inflow and outflow and does not provide fish habitat.

BAFFINLAND IRON MINES
MARY RIVER PROJECT

 **North/South Consultants Inc.**
Aquatic Environment Specialists

FISH HABITAT:

ARCTIC CHAR - NO

NINESPINE STICKLEBACK - NO

RAIL CV-107-3

FISH HABITAT POTENTIAL

Nearest Potential Overwintering Habitat - ARCH: None **Distance to Nearest Potential Overwintering Habitat - ARCH (km):** N/A

Overwintering Habitat Upstream of Site - ARCH (Y/N): No

Species	Spawning	Overwintering	Rearing	Adults Present
ARCH	N	N	N	N
NNST	N	N	N	N

FISHERIES DATA

Date: 23-Jun-19 **Temperature (°C):** NR **Gear Used:** Visual

Distance Fished (m): N/A **Duration Fished (seconds):** N/A

Species	Season	Effort (Seconds)	Fish Captured	Fish Observed	CPUE (No. Fish/60 Seconds)	Length Range (mm)
ARCH	Spring	N/A	0	0	-	-
NNST	Spring	N/A	0	0	-	-

INFILL HABITAT

Area	Fines (%)	Gravel (%)	Small Cobble (%)	Large Cobble (%)	Boulders (%)
Nearshore	40	0	60	0	0
Offshore	40	0	60	0	0

OTHER NOTES/OBSERVATIONS

No fish were observed in the isolated pond. This pond does not provide fish habitat.

RAIL CV-107-3

23-JUN-19



A



B



C

Photos 1. Photos of the pond in spring 2019: (A) at the infill site looking northwest; (B) at the infill site looking west; and (C) looking east towards the infill location.