

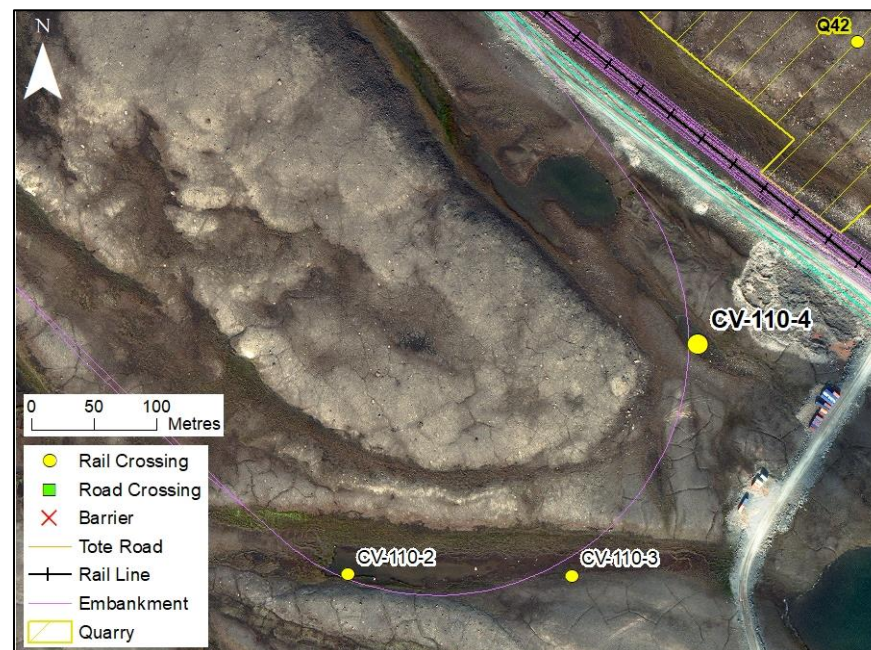
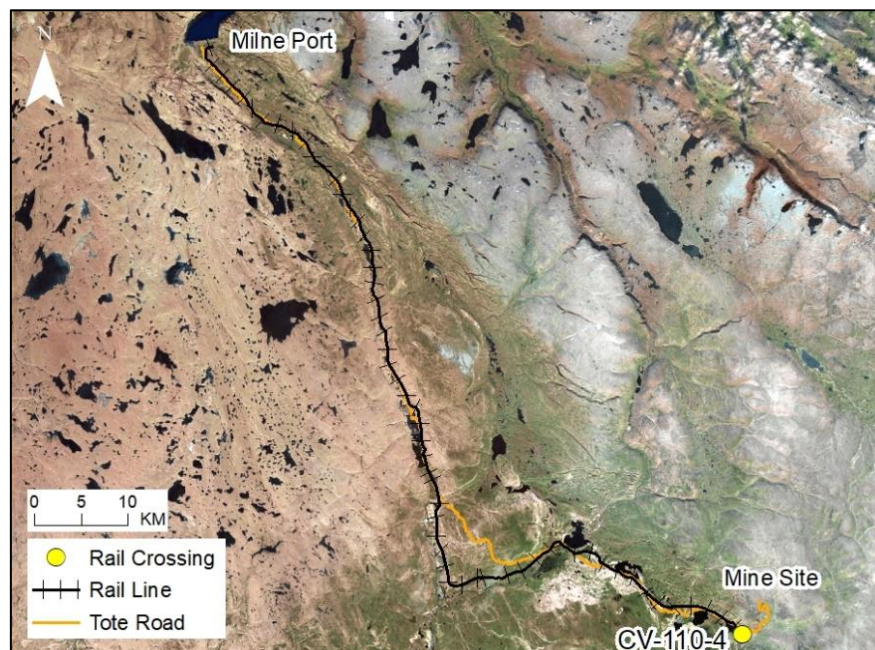
RAIL CV-110-4

LOCATION AND CROSSING DESCRIPTION

Site ID:	CV-110-4	Dates Surveyed:	29-Jun-19	Waterbody Type:	Pond
Project Interaction:	Rail Pond Infilling + Culvert	Centreline UTM Coordinates:	17W 561546 E 7912425 N	Culvert Length (m):	30
Number of Barrels:	2	Culvert Diameter/Span (mm):	1200	Slope (%):	5

GENERAL PHYSICAL CHARACTERISTICS

Surface Area (m²):	603	Shoreline Length (m):	127	Drainage Basin Area (m²):	0.0612
Maximum Depth (m):	0.3 (estimated)			Mean Depth (m):	-



SUMMARY

The rail crosses and infills a portion of a shallow (approximate maximum depth 0.3 m), marshy headwater pond at site CV-110-4. The outflow stream flows northwest for approximately 900 m before entering the northwest basin of Sheardown Lake. There is a permanent barrier from approximately 700-800 m downstream from the centreline that consists of a boulder field on a steep incline with multiple vertical drops. This pond does not provide fish habitat.

BAFFINLAND IRON MINES
MARY RIVER PROJECT

 **North/South Consultants Inc.**
Aquatic Environment Specialists

FISH HABITAT:

ARCTIC CHAR - NO

NINESPINE STICKLEBACK - NO

RAIL CV-110-4

BARRIERS

Upstream/ Downstream	UTM		Barrier Type			Height (m)	Gradient (°)	Description	Site Label
	Easting	Northing	1	2	3				
Downstream	561093	7912895	VD	HG	B	0.55	15	Permanent Barrier: Upper end of long barrier	A
Downstream	561025	7912966	B					Permanent Barrier: Lower end of long barrier	B



RAIL CV-110-4

FISH HABITAT POTENTIAL

Nearest Potential Overwintering Habitat - ARCH:

Sheardown Lake

Distance to Nearest Potential Overwintering Habitat - ARCH (km):

0.9

Overwintering Habitat Upstream of Site - ARCH (Y/N):

No

Species	Spawning	Overwintering	Rearing	Adults Present
ARCH	N	N	N	N
NNST	N	N	N	N

FISHING SITES



RAIL CV-110-4

FISHERIES DATA

Date: 29-Jun-19 **Temperature (°C):** 22.0 **Gear Used:** Backpack Electrofisher/Visual
Distance Fished (m): Entire shoreline of pond **Duration Fished (seconds):** 269

Species	Season	Effort (Seconds)	Fish Captured	Fish Observed	CPUE (No. Fish/60 Seconds)	Length Range (mm)
ARCH	Spring	269	0	0	-	-
NNST	Spring	269	0	0	-	-

INFILL HABITAT

Area	Fines (%)	Gravel (%)	Small Cobble (%)	Large Cobble (%)	Boulders (%)
Nearshore	80	0	15	5	0
Offshore	80	0	15	5	0

OTHER NOTES/OBSERVATIONS

No fish were captured or observed in the pond or in the outflow stream during barrier surveys. Inflows are diffuse, local snow melt with no defined channel. Permanent barriers downstream prevent fish access to this stream and headwater pond.

RAIL CV-110-4

29-JUN-19



A



B



C

Photos 1. Photos of the pond at CV-110-4: (A) at the infill site looking southeast; (B) at the infill site looking northwest; and (C) at the infill site looking north across the pond.