

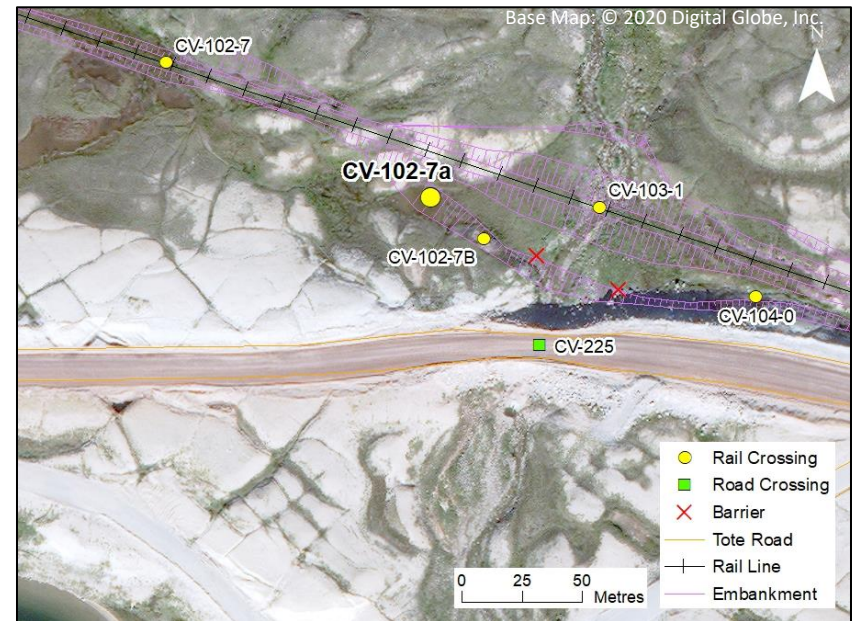
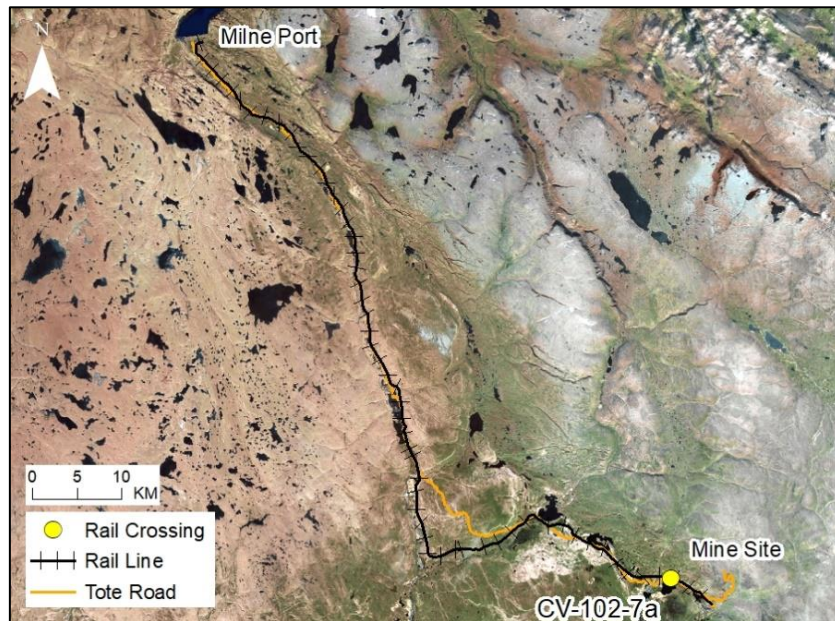
# RAIL CV-102-7A

## LOCATION AND CROSSING DESCRIPTION

<b>Site ID:</b>	CV-102-7a	<b>Dates Surveyed:</b>	20-Jun-19	<b>Waterbody Type:</b>	Pond
<b>Project Interaction:</b>	Rail Pond Infilling	<b>Centreline UTM Coordinates:</b>	17W 557379 E 7915248 N	<b>Culvert Length (m):</b>	N/A
<b>Number of Barrels:</b>	N/A	<b>Culvert Diameter/Span (mm):</b>	N/A	<b>Slope (%):</b>	N/A

## GENERAL PHYSICAL CHARACTERISTICS

<b>Surface Area (m²):</b>	205	<b>Shoreline Length (m):</b>	54	<b>Drainage Basin Area (m²):</b>	0.410
<b>Maximum Depth (m):</b>	0.5 (estimated)			<b>Mean Depth (m):</b>	-



## SUMMARY

The rail will infill a shallow (approximate maximum depth 0.5 m) pond at site CV-102-7a. During the spring 2019 survey, both the inflow and outflow had areas of subsurface flow and the pond was largely isolated. With higher water levels the pond may connect 20 m downstream to the CV-102-7b infill area. The entire pond has fine substrate with some aquatic and flooded terrestrial vegetation.

There is a permanent vertical drop barrier 50 m downstream of the pond at the confluence with the stream crossed by CV-103-1 which prevents fish access. This pond does not provide fish habitat.

BAFFINLAND IRON MINES  
MARY RIVER PROJECT

 **North/South Consultants Inc.**  
Aquatic Environment Specialists

FISH HABITAT:

ARCTIC CHAR - NO

NINESPINE STICKLEBACK - NO



# RAIL CV-102-7A

## BARRIERS

Upstream/ Downstream	UTM		Barrier Type			Height (m)	Gradient (°)	Description	Site Label
	Easting	Northing	1	2	3				
Downstream	557423	7915224	VD	SHALL		0.5	12	Permanent Barrier: Vertical drop at downstream confluence	A



A

# RAIL CV-102-7A

## FISH HABITAT POTENTIAL

**Nearest Potential Overwintering Habitat - ARCH:** Camp Lake **Distance to Nearest Potential Overwintering Habitat - ARCH (km):** ~0.37

**Overwintering Habitat Upstream of Site - ARCH (Y/N):** No

Species	Spawning	Overwintering	Rearing	Adults Present
ARCH	N	N	N	N
NNST	N	N	N	N

## FISHERIES DATA

**Date:** 20-Jun-19 **Temperature (°C):** NR **Gear Used:** Visual

**Distance Fished (m):** N/A **Duration Fished (seconds):** N/A

Species	Season	Effort (Seconds)	Fish Captured	Fish Observed	CPUE (No. Fish/60 Seconds)	Length Range (mm)
ARCH	Spring	N/A	0	0	-	-
NNST	Spring	N/A	0	0	-	-

## ENCROACHMENT HABITAT

Area	Fines (%)	Gravel (%)	Small Cobble (%)	Large Cobble (%)	Boulders (%)
Nearshore	100	0	0	0	0
Offshore	100	0	0	0	0

## OTHER NOTES/OBSERVATIONS

No fish were observed in the entire pond in spring 2019 (visibility extended to the bottom of the pond). The pond is likely frequently isolated and there is a permanent downstream vertical barrier to upstream fish passage. Due to the barrier, this pond does not provide fish habitat.



# RAIL CV-102-7A

20-JUN-19



A



B



C

**Photos 1.** Photos of the pond in spring: (A) looking northeast; (B) looking north; and (C) looking southeast.