

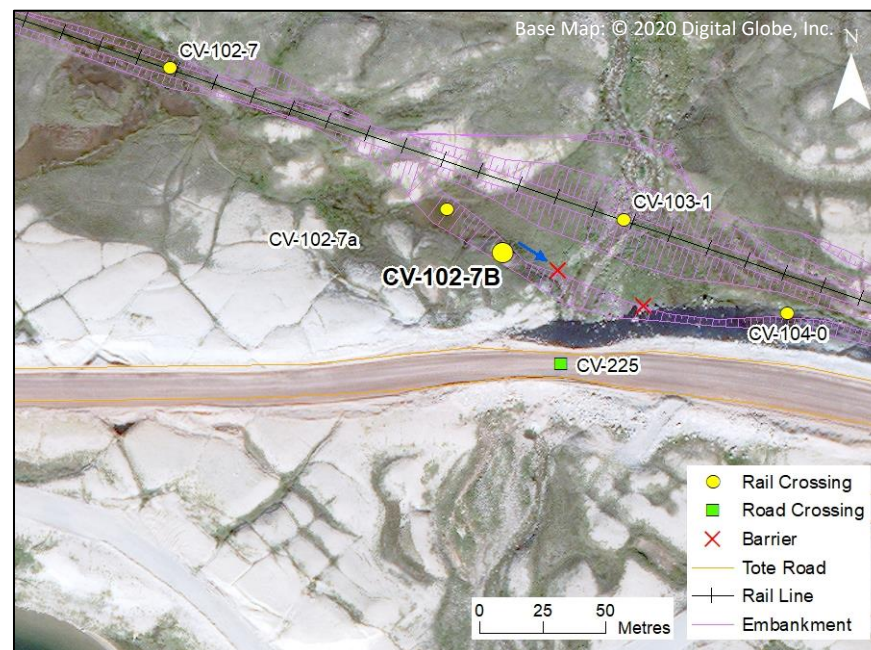
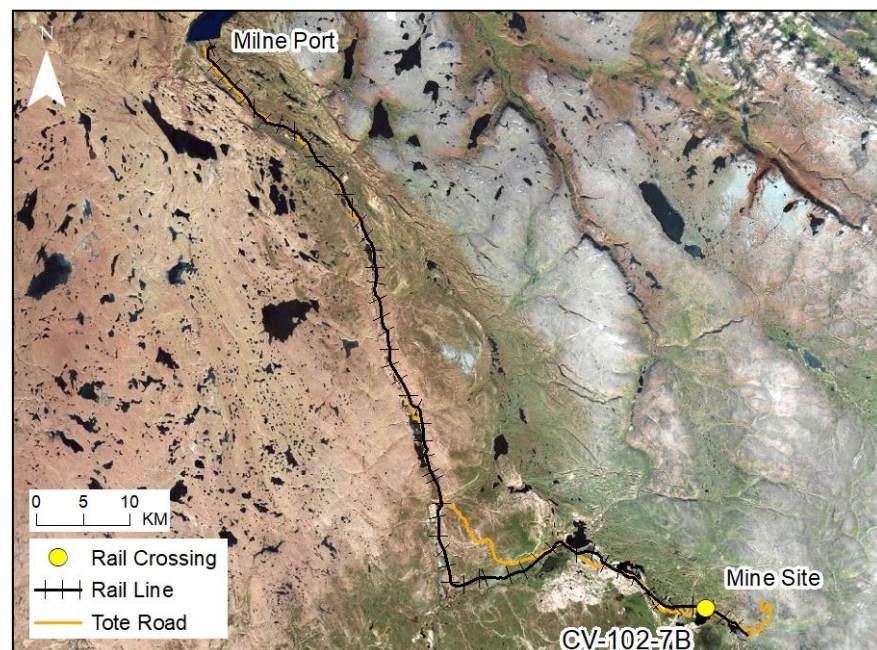
RAIL CV-102-7B

LOCATION AND CROSSING DESCRIPTION

Site ID:	CV-102-7b	Dates Surveyed:	20-Jun-19	Waterbody Type:	Stream
Project Interaction:	Stream infilling + Stream Diversion	Centreline UTM Coordinates:	17W 557401 E 7915231 N	Culvert Length (m):	N/A
Number of Barrels:	N/A	Culvert Diameter/Span (mm):	N/A	Slope (%):	N/A

GENERAL PHYSICAL CHARACTERISTICS

Flow Regime:	Intermittent	Stream Order:	2	Drainage Basin Area (km²):	0.410
---------------------	--------------	----------------------	---	--	-------



SUMMARY

The rail embankment will infill the stream (identified as CV-102-7b) that flows from the pond at CV-102-7a to the larger stream crossed at CV-103-1. The rail embankment is wide in this area of the rail alignment and the culvert at CV-103-1 will be 75 m in length.

This stream is very shallow, with no defined channel (i.e., water flowing over terrestrial vegetation). Water was frequently subsurface or very shallow downstream of the rail centreline in spring 2019 and there is a permanent vertical drop barrier 5 m upstream from the confluence with the stream crossed at CV-103-1.

Due to the permanent downstream barrier at the confluence with CV-103-1, there is no fish habitat in any portion of CV-102-7b, including the infill area.

**BAFFINLAND IRON MINES
MARY RIVER PROJECT**

North/South Consultants Inc.
Aquatic Environment Specialists

FISH HABITAT:

ARCTIC CHAR - NO

NINESPINE STICKLEBACK - NO

RAIL CV-102-7B

BARRIERS

Upstream/ Downstream	UTM		Barrier Type			Height (m)	Gradient (°)	Description	Site Label
	Easting	Northing	1	2	3				
Downstream	557423	7915224	VD	SHALL		0.5	12	Permanent Barrier: Vertical drop at downstream confluence	A



A

RAIL CV-102-7B

FISH HABITAT POTENTIAL

Nearest Potential Overwintering Habitat - ARCH: Camp Lake **Distance to Nearest Potential Overwintering Habitat - ARCH (km):** ~0.35

Overwintering Habitat Upstream of Site - ARCH (Y/N): No

Species	Spawning	Overwintering	Rearing	Adults Present
ARCH	N	N	N	N
NNST	N	N	N	N

FISHERIES DATA

Date: 20-Jun-19 **Temperature (°C):** NR **Gear Used:** Visual

Distance Fished (m): N/A **Duration Fished (seconds):** N/A

Species	Season	Pass	Effort (Seconds)	Fish Captured	Fish Observed	CPUE (No. Fish/60 Seconds)	Length Range (mm)
ARCH	Spring	N/A	N/A	0	0	-	-
NNST	Spring	N/A	N/A	0	0	-	-

COMMENTS

The stream was of insufficient depth for electrofishing in spring 2019. However, no fish were observed in this stream and access from CV-103-1 downstream is not possible.

RAIL CV-102-7B

20-JUN-19



A



B



C

Photos 1. Photos taken at the rail centreline: (A) facing upstream; (B) facing downstream; and (C) across (left bank looking at right bank).