

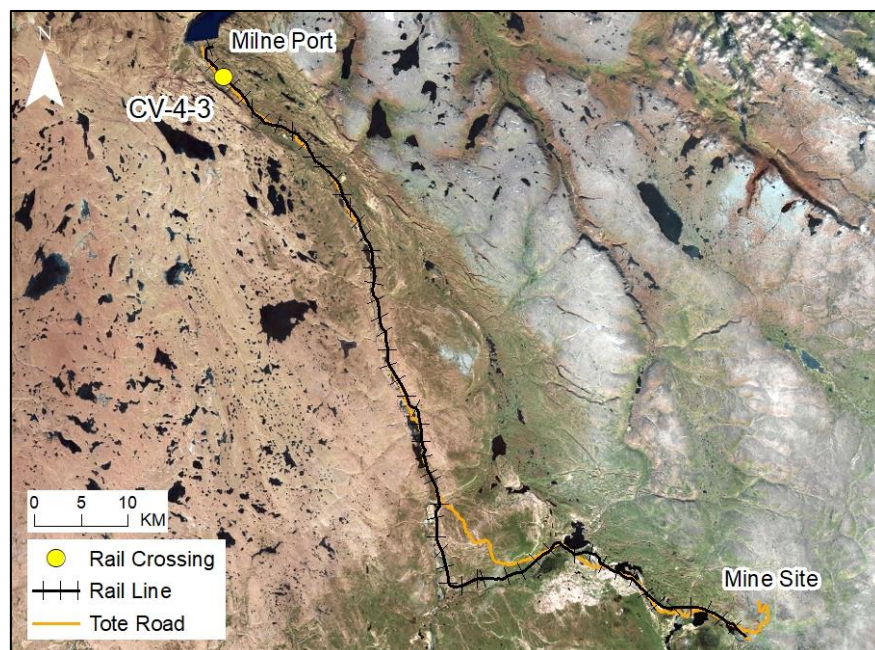
# RAIL CV-4-3

## LOCATION AND CROSSING DESCRIPTION

<b>Site ID:</b>	CV-4-3	<b>Dates Surveyed:</b>	15-Jun-19	<b>Waterbody Type:</b>	Stream
<b>Project Interaction:</b>	Rail Daylight + Culvert	<b>Centreline UTM Coordinates:</b>	17W 505842 E 7972438 N	<b>Culvert Length (m):</b>	12
<b>Number of Barrels:</b>	1	<b>Culvert Diameter/Span (mm):</b>	900	<b>Slope (%):</b>	1

## GENERAL PHYSICAL CHARACTERISTICS

<b>Flow Regime:</b>	Ephemeral	<b>Stream Order:</b>	1	<b>Drainage Basin Area (km<sup>2</sup>):</b>	0.013
---------------------	-----------	----------------------	---	--	-------



## SUMMARY

The North Rail crosses an unnamed ephemeral stream at CV-4-3, east of the Tote Road. The streams at rail crossings CV-4-1, CV-4-2, CV-4-3, and CV-4-4 are all part of the same drainage and merge approximately 280 m upstream of the Tote Road. All flow from this drainage is directed via a roadside ditch to a culvert at CV-166.

Several permanent barriers to upstream fish passage are present downstream from the centreline, including high gradient and sub-surface flow. One of these subsurface flow barriers is shared by all crossings on this drainage.

Due to the presence of permanent barriers, there is no fish habitat at site CV-4-3.

**BAFFINLAND IRON MINES  
MARY RIVER PROJECT**

**North/South Consultants Inc.**  
Aquatic Environment Specialists

**FISH HABITAT:**

**ARCTIC CHAR - NO**

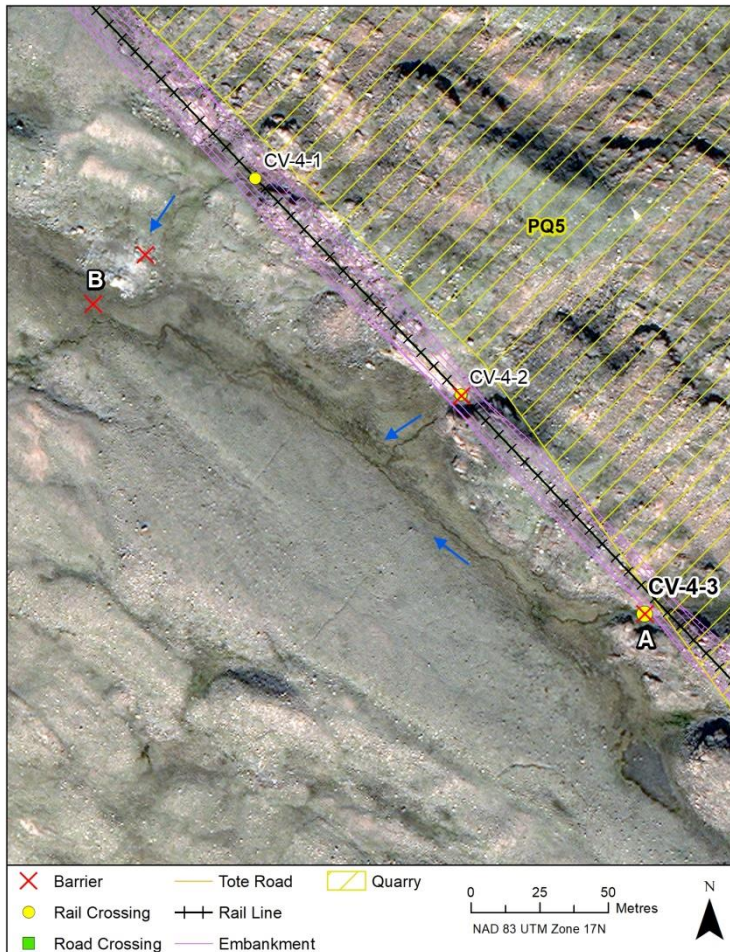
**NINESPINE STICKLEBACK - NO**



# RAIL CV-4-3

## BARRIERS

Upstream/ Downstream	UTM		Barrier Type			Height (m)	Gradient (°)	Description	Site Label
	Easting	Northing	1	2	3				
Downstream	505836	7972435	SSF					Permanent Barrier: Subsurface flow through rock that begins 10 m downstream of the crossing	A
Downstream	505635	7972548	SSF					Permanent Barrier: Sub-surface flow with no obvious channel	B



A



B



RAIL CV-4-3

FISH HABITAT POTENTIAL

Nearest Potential Overwintering Habitat - ARCH:Milne InletDistance to Nearest Potential Overwintering Habitat - ARCH (km):8.5

Overwintering Habitat Upstream of Site - ARCH (Y/N):No

Species	Spawning	Overwintering	Rearing	Adults Present
ARCH	N	N	N	N
NNST	N	N	N	N

COMMENTS

There is no overwintering habitat upstream of crossing CV-4-3, and fish access to the site from downstream habitat is blocked by two permanent barriers. The crossing itself contains boulders and sub-surface flows. There is no fish habitat at this crossing.



## RAIL CV-4-3

15-JUN-19



**A**



**B**



**C**

**Photos 1.** Photos taken at the crossing centreline in spring (A) facing upstream; (B) facing downstream; and (C) across (right bank looking at left bank).