

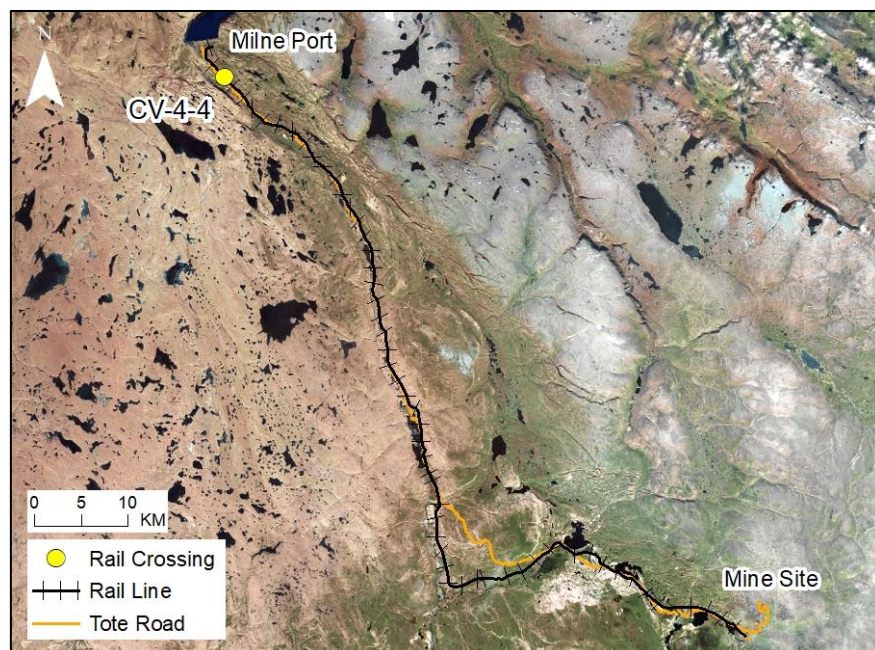
RAIL CV-4-4

LOCATION AND CROSSING DESCRIPTION

Site ID:	CV-4-4	Dates Surveyed:	15-Jun-19	Waterbody Type:	Stream
Project Interaction:	Rail Culvert	Centreline UTM Coordinates:	17W 505898 E 7972378 N	Culvert Length (m):	36
Number of Barrels:	1	Culvert Diameter/Span (mm):	900	Slope (%):	1

GENERAL PHYSICAL CHARACTERISTICS

Flow Regime:	Ephemeral	Stream Order:	1	Drainage Basin Area (km²):	0.006
---------------------	-----------	----------------------	---	--	-------



SUMMARY

The North Rail crosses an unnamed ephemeral stream at CV-4-4 upstream of the Tote Road. The streams at rail crossings CV-4-1, CV-4-2, CV-4-3, and CV-4-4 are all part of the same drainage and merge approximately 280 m upstream of the Tote Road. All flow from this drainage is directed via a roadside ditch to a culvert at CV-166. The site was dry during spring 2019.

Several permanent barriers to upstream fish passage are present downstream from the centreline, including high gradient and sub-surface flow. One of these subsurface flow barriers is shared by all crossings on this drainage.

Due to the presence of permanent barriers, there is no fish habitat at site CV-4-4.

**BAFFINLAND IRON MINES
MARY RIVER PROJECT**

North/South Consultants Inc.
Aquatic Environment Specialists

FISH HABITAT:

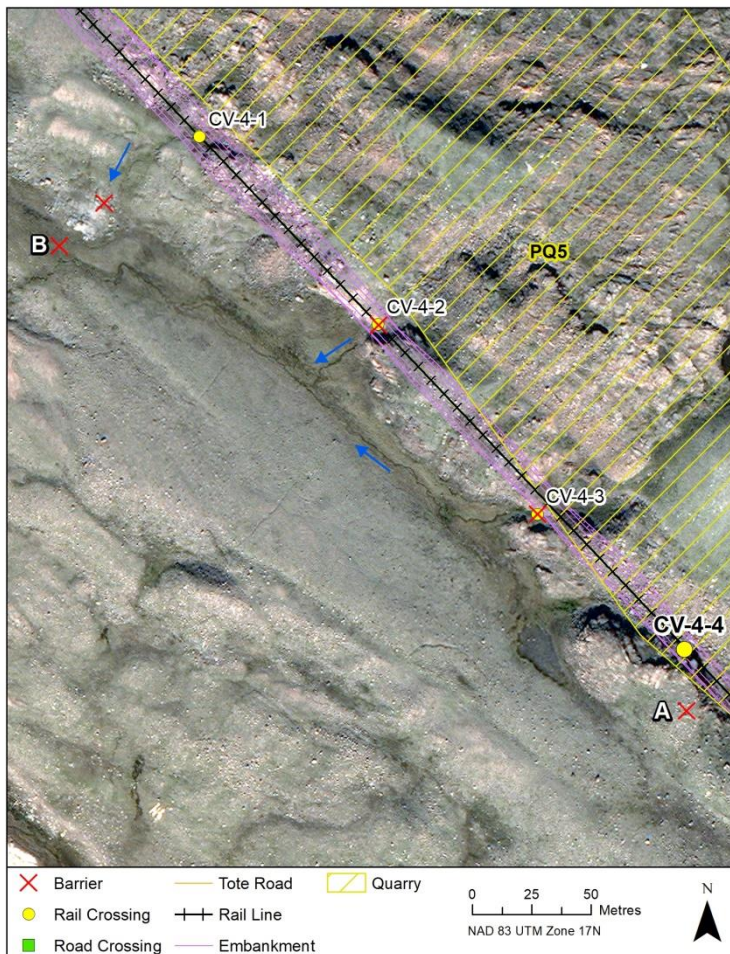
ARCTIC CHAR - NO

NINESPINE STICKLEBACK - NO

RAIL CV-4-4

BARRIERS

Upstream/ Downstream	UTM		Barrier Type			Height (m)	Gradient (°)	Description	Site Label
	Easting	Northing	1	2	3				
Downstream	505899	7972352	Other					Permanent Barrier: Dry channel with high grade beginning >75 m downstream	A
Downstream	505635	7972548	SSF					Permanent Barrier: Subsurface flow with no obvious channel	B



A



B



RAIL CV-4-4

FISH HABITAT POTENTIAL

Nearest Potential Overwintering Habitat - ARCH: Milne Inlet **Distance to Nearest Potential Overwintering Habitat - ARCH (km):** 8.6

Overwintering Habitat Upstream of Site - ARCH (Y/N): No

Species	Spawning	Overwintering	Rearing	Adults Present
ARCH	N	N	N	N
NNST	N	N	N	N

COMMENTS

There is no overwintering habitat upstream of crossing CV-4-4, and fish access to the site from downstream habitat is blocked by two permanent barriers. The crossing itself is on a rocky outcrop with a steep grade and no water was present downstream for >75 m in spring 2019. There is no fish habitat at this crossing.

RAIL CV-4-4

15-JUN-19



A



B



C

Photos 1. Photos taken at the crossing centreline in spring (A) facing upstream; (B) facing downstream; and (C) across (left bank looking at right bank).