

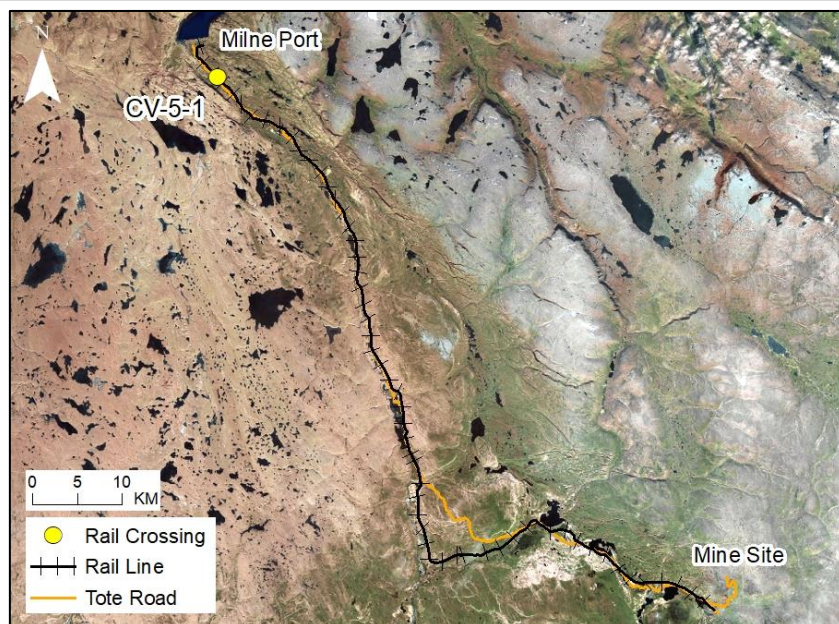
# RAIL CV-5-1

## LOCATION AND CROSSING DESCRIPTION

<b>Site ID:</b>	CV-5-1	<b>Dates Surveyed:</b>	15-Jun-19	<b>Waterbody Type:</b>	Stream
<b>Project Interaction:</b>	Rail Culvert	<b>Centreline UTM Coordinates:</b>	17W 506166 E 7972036 N	<b>Culvert Length (m):</b>	12
<b>Number of Barrels:</b>	3	<b>Culvert Diameter/Span (mm):</b>	900	<b>Slope (%):</b>	1

## GENERAL PHYSICAL CHARACTERISTICS

<b>Flow Regime:</b>	Intermittent	<b>Stream Order:</b>	2	<b>Drainage Basin Area (km<sup>2</sup>):</b>	0.456
---------------------	--------------	----------------------	---	--	-------



## SUMMARY

The North Rail crosses an unnamed intermittent stream at CV-5-1, which converges with the stream associated with CV-5-2 approximately 80 m downstream of the crossing. It drains west towards the road where it meets a larger stream that flows parallel to the Tote Road towards a culvert at CV-166 approximately 720 m downstream. This roadside stream collects water from several small, local drainages and surface melt.

The stream does not provide habitat for Arctic Char or Ninespine Stickleback due to the presence of a permanent barrier (high gradient with vertical drops) extending from the crossing to approximately 100 m downstream (which includes its confluence with CV-5-2). There is no upstream connectivity to overwintering habitat.

BAFFINLAND IRON MINES  
MARY RIVER PROJECT

 **North/South Consultants Inc.**  
Aquatic Environment Specialists

FISH HABITAT:

**ARCTIC CHAR - NO**

**NINESPINE STICKLEBACK - NO**



# RAIL CV-5-1

## BARRIERS

Upstream/ Downstream	UTM		Barrier Type			Height (m)	Gradient (°)	Description	Site Label
	Easting	Northing	1	2	3				
At Crossing and Downstream	506135	7972022	HG	VD		>0.5	15	Permanent Barrier: High gradient with several vertical drops; shared with CV-5-2	A



A

# RAIL CV-5-1

## FISH HABITAT POTENTIAL

**Nearest Potential Overwintering Habitat - ARCH:** Milne Inlet **Distance to Nearest Potential Overwintering Habitat - ARCH (km):** 8.7

**Overwintering Habitat Upstream of Site - ARCH (Y/N):** No

Species	Spawning	Overwintering	Rearing	Adults Present
ARCH	N	N	N	N
NNST	N	N	N	N

## FISHERIES DATA

**Date:** 15-Jun-19 **Temperature (°C):** NR **Gear Used:** Visual

**Distance Fished (m ):** N/A **Duration Fished (seconds):** N/A

Species	Season	Effort (Seconds)	Fish Captured	Fish Observed	CPUE (No. Fish/60 Seconds)	Length Range (mm)
ARCH	Spring	N/A	0	0	-	-
NNST	Spring	N/A	0	0	-	-

## COMMENTS

The site does not provide fish habitat due to the presence of a permanent barrier downstream of the crossing and the absence of upstream overwintering habitat.



# RAIL CV-5-1

15-JUN-19



**A**



**B**



**C**

**Photos 1.** Photos taken at the crossing centreline in spring (A) facing upstream; (B) facing downstream; and (C) across (left bank looking at right bank).