

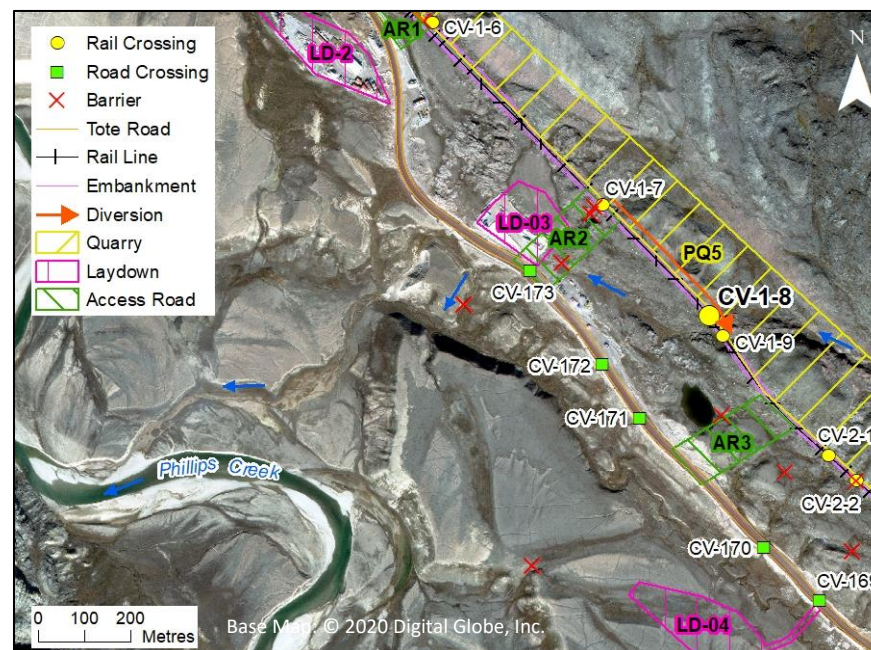
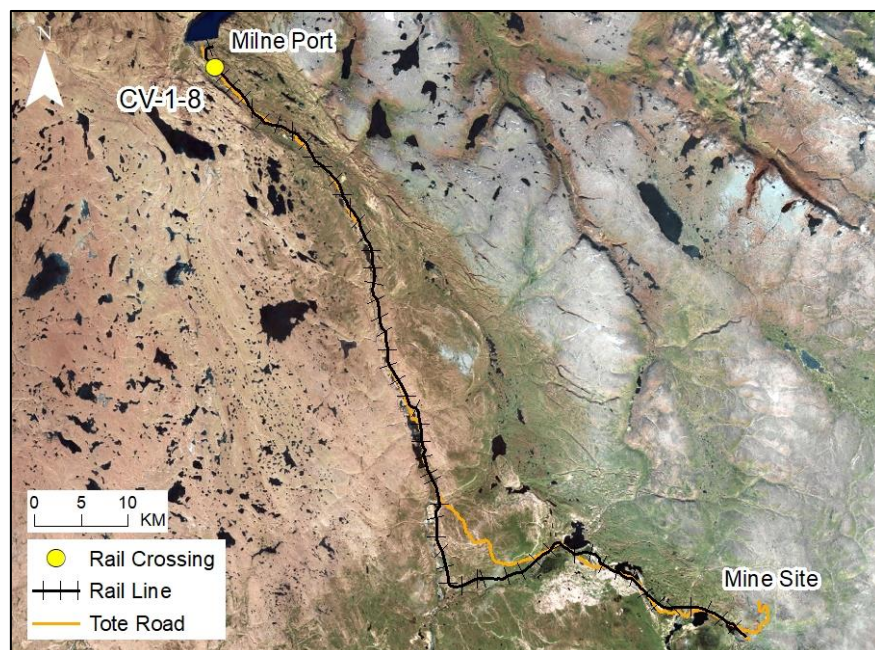
# RAIL CV-1-8

## LOCATION AND CROSSING DESCRIPTION

<b>Site ID:</b>	CV-1-8	<b>Dates Surveyed:</b>	15-Jun-19	<b>Waterbody Type:</b>	Stream
<b>Project Interaction:</b>	Rail Cut	<b>Centreline UTM Coordinates:</b>	17W 504895 E 7973426 N	<b>Culvert Length (m):</b>	N/A
<b>Number of Barrels:</b>	N/A	<b>Culvert Diameter/Span (mm):</b>	N/A	<b>Slope (%):</b>	N/A

## GENERAL PHYSICAL CHARACTERISTICS

<b>Flow Regime:</b>	Intermittent	<b>Stream Order:</b>	2	<b>Drainage Basin Area (km<sup>2</sup>):</b>	0.055
---------------------	--------------	----------------------	---	--	-------



## SUMMARY

The North Rail will cut an unnamed intermittent stream at CV-1-8 and divert the flow to rail culvert CV-1-9 that is part of the same overall system that drains to Phillips Creek downstream of the Tote Road; a second stream branch on the same system (CV-1-7) will also be diverted to CV-1-9. The streams at rail crossings CV-1-7, CV-1-8, and CV-1-9 merge immediately upstream of the existing Tote Road crossing CV-173.

None of the stream branches upstream of the Tote Road provide fish habitat due to the presence of a permanent barrier to fish passage approximately 200 m downstream of the Tote Road. Diverted flow will therefore be returned to the same drainage upstream of fish habitat. The area of this stream that will be affected by flow diversion is not fish habitat.

BAFFINLAND IRON MINES  
MARY RIVER PROJECT

 **North/South Consultants Inc.**  
Aquatic Environment Specialists

FISH HABITAT:

ARCTIC CHAR - NO

NINESPINE STICKLEBACK - NO



# RAIL CV-1-8

## BARRIERS

Upstream/ Downstream	UTM		Barrier Type			Height (m)	Gradient (°)	Description	Site Label
	Easting	Northing	1	2	3				
Downstream	504360	7973452	HG	VD		1.8	17	Permanent Barrier: 1.8 m vertical drop over a horizontal distance of 5 m	A



A



## RAIL CV-1-8

14-JUN-19



A



B



C



D

**Photos 1.** Photos of rail cut at CV-1-8: (A) aerial photo of the crossing in spring 2019; (B) facing upstream in summer 2018; (C) facing downstream in summer 2018; and (D) looking across (left bank looking at right bank).