

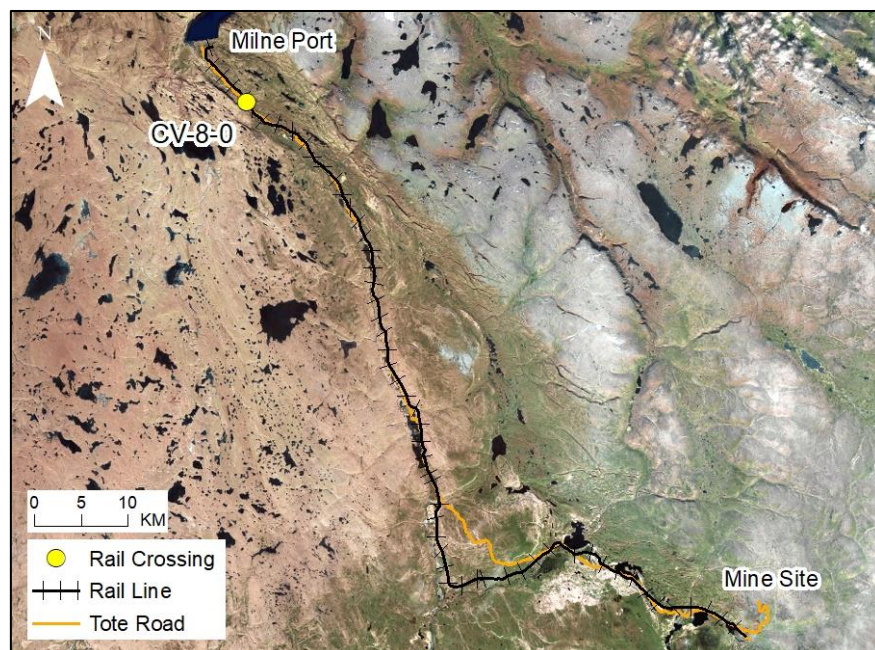
RAIL CV-8-0

LOCATION AND CROSSING DESCRIPTION

Site ID:	CV-8-0	Dates Surveyed:	16-Jun-19	Waterbody Type:	Stream
Project Interaction:	Rail Culvert	Centreline UTM Coordinates:	17W 508289 E 7969746 N	Culvert Length (m):	24
Number of Barrels:	3	Culvert Diameter/Span (mm):	900	Slope (%):	5

GENERAL PHYSICAL CHARACTERISTICS

Flow Regime:	Intermittent	Stream Order:	2	Drainage Basin Area (km²):	0.790
---------------------	--------------	----------------------	---	--	-------



SUMMARY

The North Rail crosses an unnamed intermittent headwater stream at CV-8-0. The stream drains southwest towards the existing Tote Road where it flows into a roadside ditch that diverts water towards a pond to the northwest and eventually a culvert crossings at CV-154. There are no existing culverts at CV-152 or CV-153.

The drainage ditch is steep with some patches of subsurface flow under cobble, but the stream is also located on a hill with a high gradient that acts as a natural permanent barrier to upstream fish passage. The site is not connected to upstream overwintering habitat.

There is no fish habitat at CV-8-0.

BAFFINLAND IRON MINES
MARY RIVER PROJECT

 **North/South Consultants Inc.**
Aquatic Environment Specialists

FISH HABITAT:

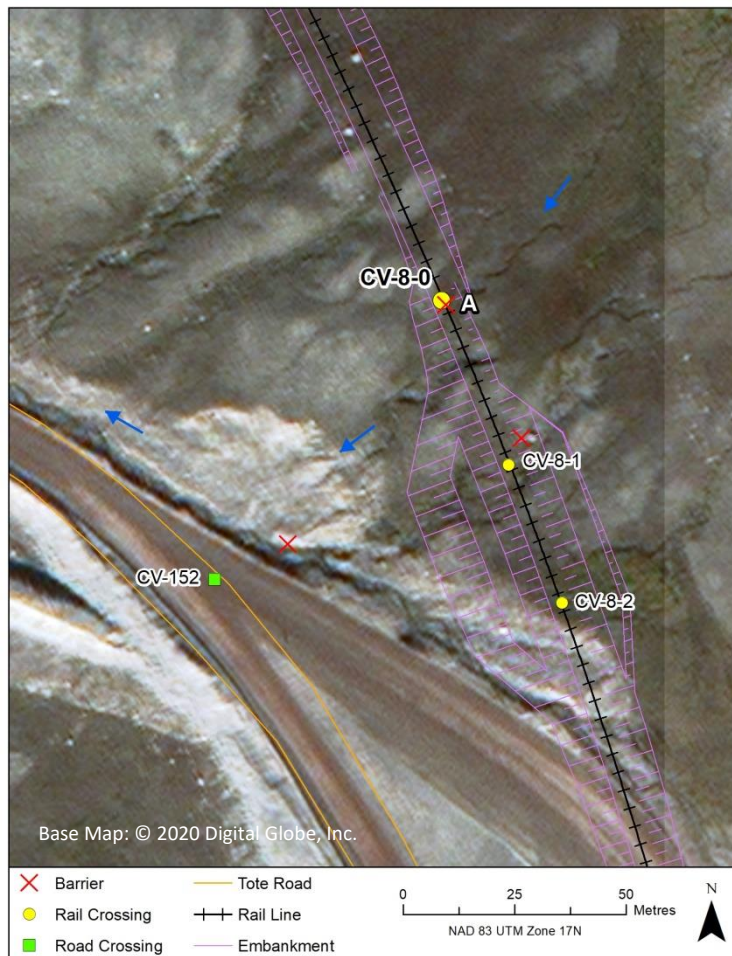
ARCTIC CHAR - NO

NINESPINE STICKLEBACK - NO

RAIL CV-8-0

BARRIERS

Upstream/ Downstream	UTM		Barrier Type			Height (m)	Gradient (°)	Description	Site Label
	Easting	Northing	1	2	3				
At crossing and downstream	508290	7969745	HG				13	Permanent Barrier: High gradient stream from crossing to roadside ditch	A



A

RAIL CV-8-0

FISH HABITAT POTENTIAL

Nearest Potential Overwintering Habitat - ARCH: N/A

Distance to Nearest Potential Overwintering Habitat - ARCH (km): N/A

Overwintering Habitat Upstream of Site - ARCH (Y/N): No

Species	Spawning	Overwintering	Rearing	Adults Present
ARCH	N	N	N	N
NNST	N	N	N	N

FISHERIES DATA

Date: 16-Jun-19

Temperature (°C): NR

Gear Used: Visual

Distance Fished (m): N/A

Duration Fished (seconds): N/A

Species	Season	Effort (Seconds)	Fish Captured	Fish Observed	CPUE (No. Fish/60 Seconds)	Length Range (mm)
ARCH	Spring	N/A	N/A	0	-	-
NNST	Spring	N/A	N/A	0	-	-

COMMENTS

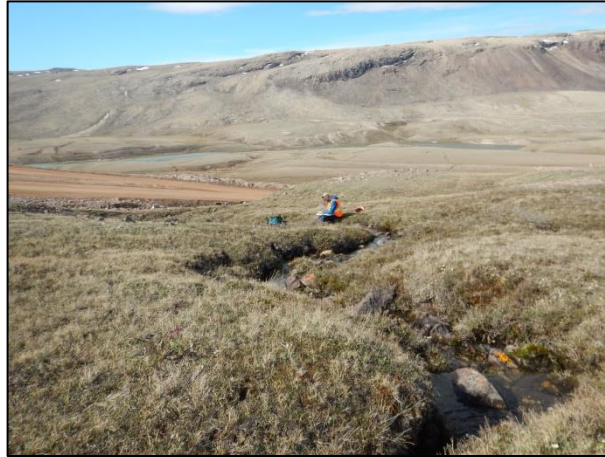
This stream does not connect to fish-bearing waters on its downstream end, and any upstream fish passage is blocked by a high gradient from the roadside ditch to the crossing. There is no fish habitat at this crossing.

RAIL CV-8-0

16-JUN-19



A



B



C



D

Photos 1. Photos taken at the crossing centreline in spring (A) facing upstream; (B) facing downstream; (C) across (right bank looking at left bank); and (D) where the stream flows into the roadside ditch.