

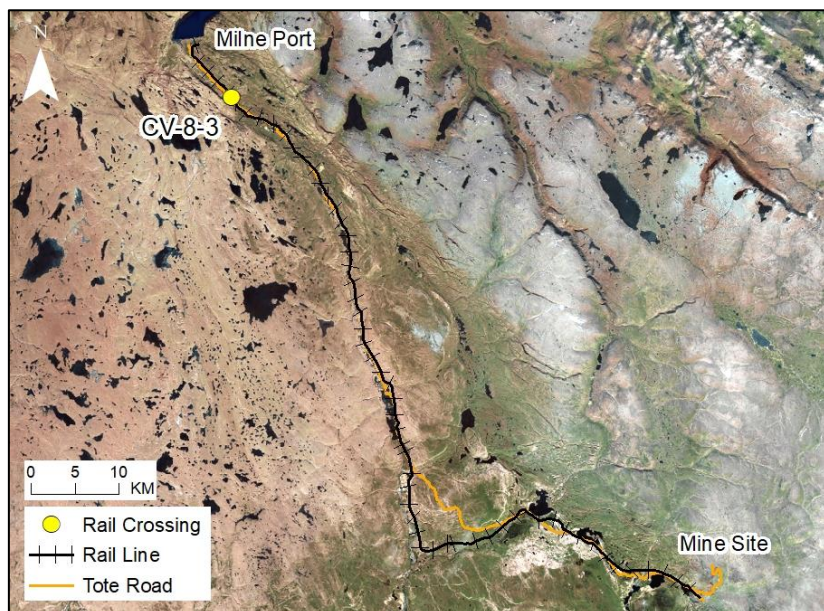
RAIL CV-8-3

LOCATION AND CROSSING DESCRIPTION

Site ID:	CV-8-3	Dates Surveyed:	16-Jun-19	Waterbody Type:	Pond
Project Interaction:	Rail Culvert	Centreline UTM Coordinates:	17W 508342 E 7969594 N	Culvert Length (m):	24
Number of Barrels:	1	Culvert Diameter/Span (mm):	1200	Slope (%):	5

GENERAL PHYSICAL CHARACTERISTICS

Surface Area (m²):	72	Shoreline Length (m):	46	Drainage Basin Area (m²):	-
Maximum Depth (m):	0.50 (measured)			Mean Depth (m):	-



SUMMARY

The rail overlaps with the existing Tote Road and a roadside ditch pond at CV-8-3. The pond is located between the northbound and southbound lanes of the Tote Road. The pond is a small depression in road aggregate that collects water during snow melt and precipitation. This pond had nearly dried up between 16 June and 2 July 2019. The pond is fully isolated, as there are no culverts on either section of the road.

The pond is not connected to any other waterbodies and is too shallow to support overwintering. There is no fish habitat at this site.

BAFFINLAND IRON MINES
MARY RIVER PROJECT

 **North/South Consultants Inc.**
Aquatic Environment Specialists

FISH HABITAT:

ARCTIC CHAR - NO

NINESPINE STICKLEBACK - NO

RAIL CV-8-3

FISH HABITAT POTENTIAL

Nearest Potential Overwintering Habitat - ARCH: None

Distance to Nearest Potential Overwintering Habitat - ARCH (km): N/A

Overwintering Habitat Upstream of Site - ARCH (Y/N): No

Species	Spawning	Overwintering	Rearing	Adults Present
ARCH	N	N	N	N
NNST	N	N	N	N

INFILL HABITAT

Area	Fines (%)	Gravel (%)	Small Cobble (%)	Large Cobble (%)	Boulders (%)
Nearshore	50	30	20	0	0
Offshore	50	30	20	0	0

OTHER NOTES/OBSERVATIONS

Fish were not observed in this small, shallow, isolated ditch pond in spring 2019 and the pond is isolated.

ROAD CV-8-3

16-JUN-19



A



B



C

Photos 1. Photos taken in spring 2019 of: (A) the rail centreline facing south; (B) the roadside ditch pond facing east on 16 June; and (C) the roadside ditch pond facing east on 2 July.