

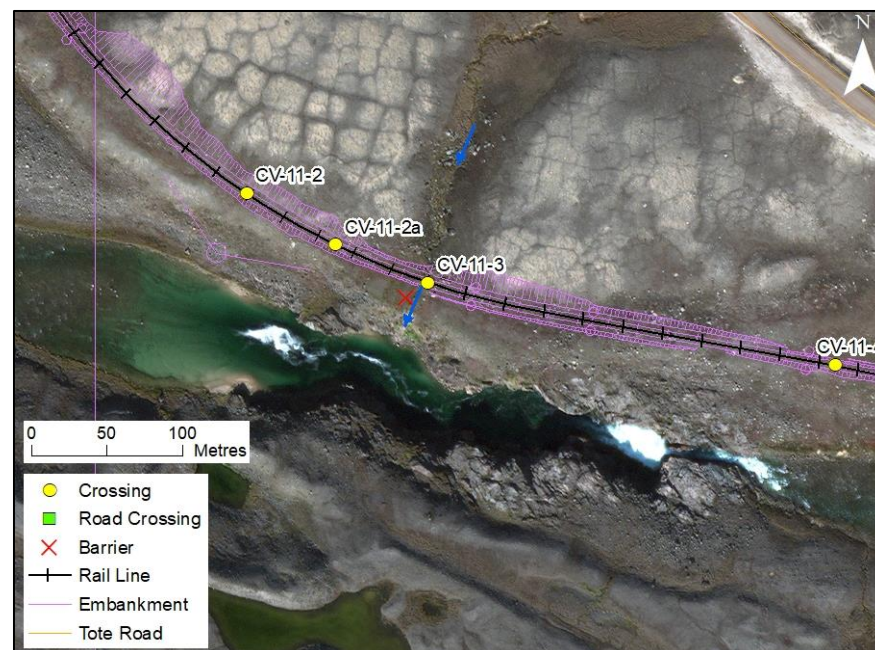
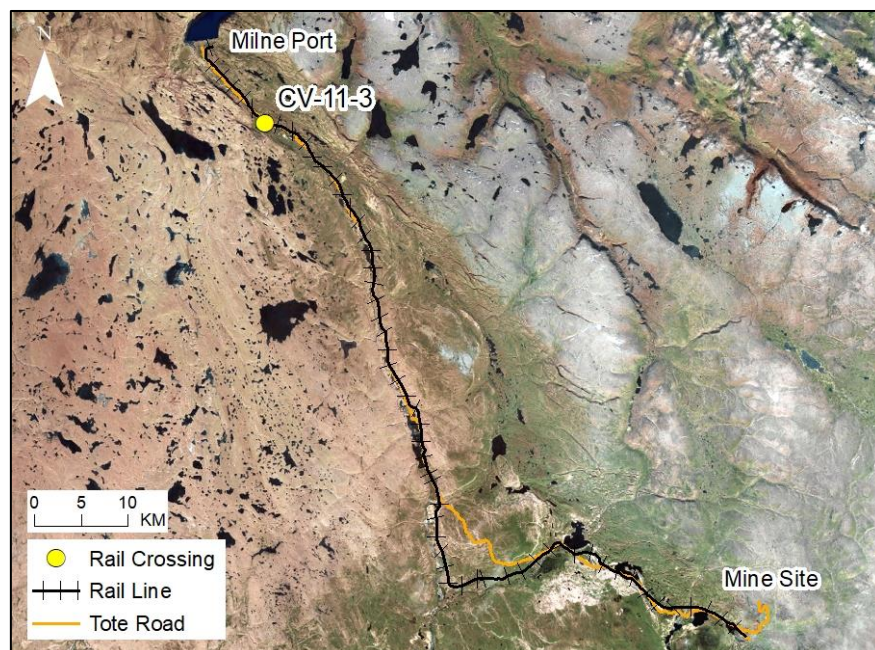
RAIL CV-11-3

LOCATION AND CROSSING DESCRIPTION

Site ID:	CV-11-3	Dates Surveyed:	16-Jun-19 and 27-Jun-19	Waterbody Type:	Stream
Project Interaction:	Rail Daylight + Culvert	Centreline UTM Coordinates:	17W 510220 E 7967461 N	Culvert Length (m):	12
Number of Barrels:	1	Culvert Diameter/Span (mm):	900	Slope (%):	4

GENERAL PHYSICAL CHARACTERISTICS

Flow Regime:	Intermittent	Stream Order:	2	Drainage Basin Area (km²):	0.231
---------------------	--------------	----------------------	---	--	-------



SUMMARY

The North Rail crosses an unnamed intermittent stream at CV-11-3 that flows approximately 50 m south to Phillips Creek. The stream is crossed by the existing Tote Road at crossing CV-136 at its headwaters. There is a large (>10 m) vertical drop at the mouth of the stream that prevents upstream fish passage. The crossing centreline is located on a steep hill and had little water in spring 2019.

The crossing does not provide fish habitat due to the permanent downstream barrier and the absence of upstream overwintering habitat.

BAFFINLAND IRON MINES
MARY RIVER PROJECT

 **North/South Consultants Inc.**
Aquatic Environment Specialists

FISH HABITAT:

ARCTIC CHAR - NO

NINESPINE STICKLEBACK - NO

RAIL CV-11-3

BARRIERS

Upstream/ Downstream	UTM		Barrier Type			Height (m)	Gradient (°)	Description	Site Label
	Easting	Northing	1	2	3				
Downstream	510206	7967451	VD			>10.0		Permanent Barrier: Large vertical drop to Phillips Creek with high grade	A



A



A



RAIL CV-11-3

FISH HABITAT POTENTIAL

Nearest Potential Overwintering Habitat - ARCH: Milne Inlet **Distance to Nearest Potential Overwintering Habitat - ARCH (km):** 15.3

Overwintering Habitat Upstream of Site - ARCH (Y/N): No

Species	Spawning	Overwintering	Rearing	Adults Present
ARCH	N	N	N	N
NNST	N	N	N	N

FISHERIES DATA

Date: 16-Jun-19 **Temperature (°C):** NR **Gear Used:** Visual

Distance Fished (m): N/A **Duration Fished (seconds):** N/A

Species	Season	Effort (Seconds)	Fish Captured	Fish Observed	CPUE (No. Fish/60 Seconds)	Length Range (mm)
ARCH	Spring	N/A	N/A	0	-	-
NNST	Spring	N/A	N/A	0	-	-

COMMENTS

The crossing is located on a steep hillside with a large vertical drop prior to discharge to Phillips Creek. The stream had little water in spring 2019 and no fish were observed. This site does not provide fish habitat.

RAIL CV-11-3

16-JUN-19



A



B



C

Photos 1. Ground photos taken at the crossing centreline in spring 2019: (A) facing upstream; (B) facing downstream; (C) across (left bank looking at right bank).