

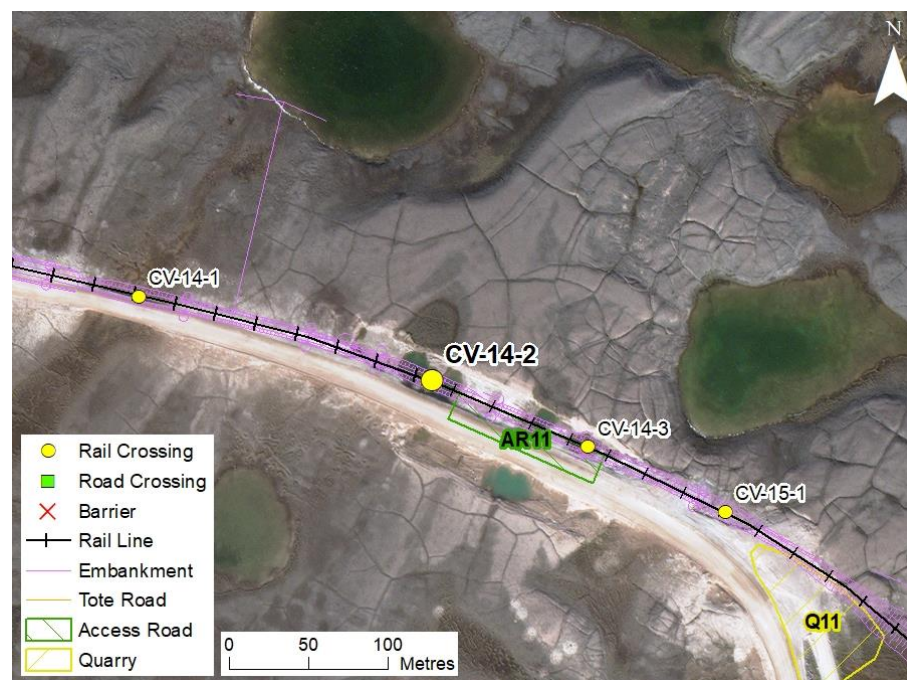
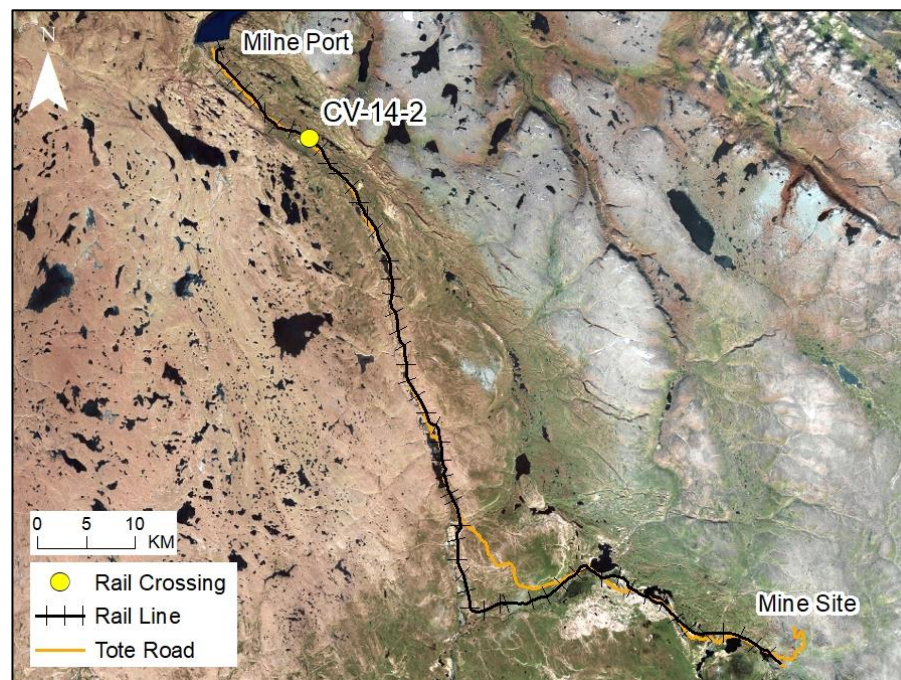
# RAIL CV-14-2

## LOCATION AND CROSSING DESCRIPTION

<b>Site ID:</b>	CV-14-2	<b>Dates Surveyed:</b>	24-Jun-19	<b>Waterbody Type:</b>	Pond
<b>Project Interaction:</b>	Rail Pond Infilling + Culvert	<b>Centreline UTM Coordinates:</b>	17W 513435 E 7966375 N	<b>Culvert Length (m):</b>	12
<b>Number of Barrels:</b>	2	<b>Culvert Diameter/Span (mm):</b>	900	<b>Slope (%):</b>	1

## GENERAL PHYSICAL CHARACTERISTICS

<b>Surface Area (m²):</b>	808	<b>Shoreline Length (m):</b>	125	<b>Drainage Basin Area (m²):</b>	-
<b>Maximum Depth (m):</b>	1.0 (Estimated)			<b>Mean Depth (m):</b>	-



## SUMMARY

The rail will infill a portion of a shallow roadside pond (approximate maximum depth 1.0 m) northeast of the existing Tote Road at CV-14-2. It is a former borrow pit used during construction and maintenance of the road. The pond is of insufficient depth to support overwintering for either fish species, and lacks upstream or downstream connections to fish habitat. No fish were observed in 2018 or 2019.

The pond at CV-14-2 does not provide fish habitat.

BAFFINLAND IRON MINES  
MARY RIVER PROJECT

 **North/South Consultants Inc.**  
Aquatic Environment Specialists

FISH HABITAT:

ARCTIC CHAR - NO

NINESPINE STICKLEBACK - NO

# RAIL CV-14-2

## BARRIERS

Upstream/ Downstream	UTM		Barrier Type			Height (m)	Gradient (°)	Description	Site Label
	Easting	Northing	1	2	3				
Inflowing Stream	All inflows appear to be diffuse over terrestrial habitat and not fish-bearing								
Outflowing Stream	All outflows appear to be diffuse over terrestrial habitat and not fish-bearing								

## FISH HABITAT POTENTIAL

**Nearest Potential Overwintering Habitat - ARCH:** N/A **Distance to Nearest Potential Overwintering Habitat - ARCH (km):** N/A

**Overwintering Habitat Upstream of Site - ARCH (Y/N):** No

Species	Spawning	Overwintering	Rearing	Adults Present
ARCH	N	N	N	N
NNST	N	N	N	N

## FISHERIES DATA

**Date:** 24-Jun-19 **Temperature (°C):** NR **Gear Used:** Visual

**Distance Fished (m):** N/A **Duration Fished (seconds):** N/A

Species	Season	Effort (Seconds)	Fish Captured	Fish Observed	CPUE (No. Fish/60 Seconds)	Length Range (mm)
ARCH	Spring	N/A	0	0	-	-
NNST	Spring	N/A	0	0	-	-

## OTHER NOTES/OBSERVATIONS

The pond consists of standing water with no defined inflows or outflows. The maximum depth in spring 2019 (1.0 m) was insufficient to support overwintering for either fish species.

## RAIL CV-14-2

24-JUN-19



**A**



**B**



**C**

**Photos 1.** Photos of the pond at CV-14-2 in spring 2019: (A) looking northeast; (B) looking southwest; and (C) looking southeast.