

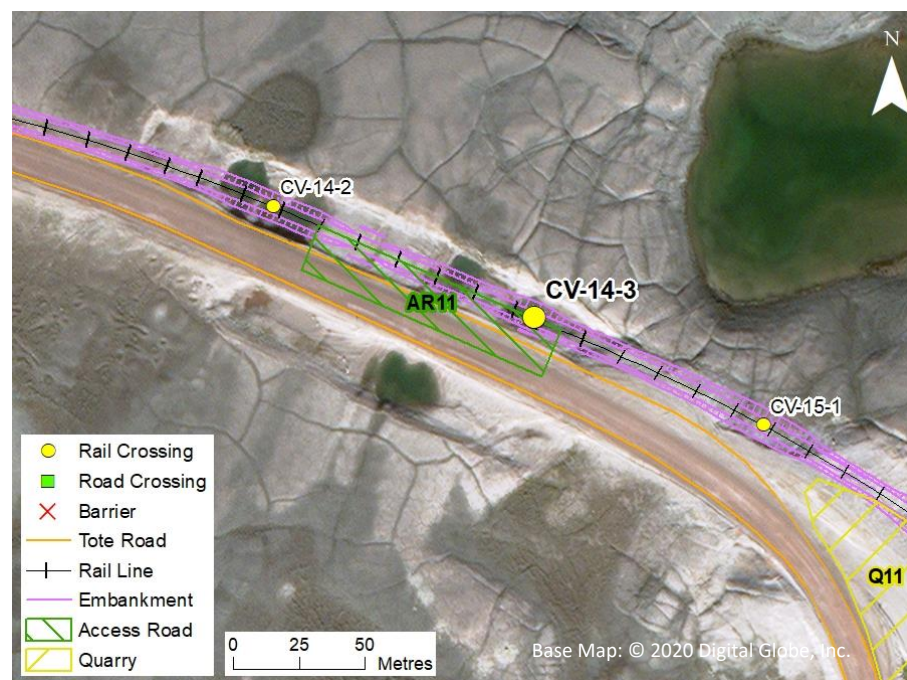
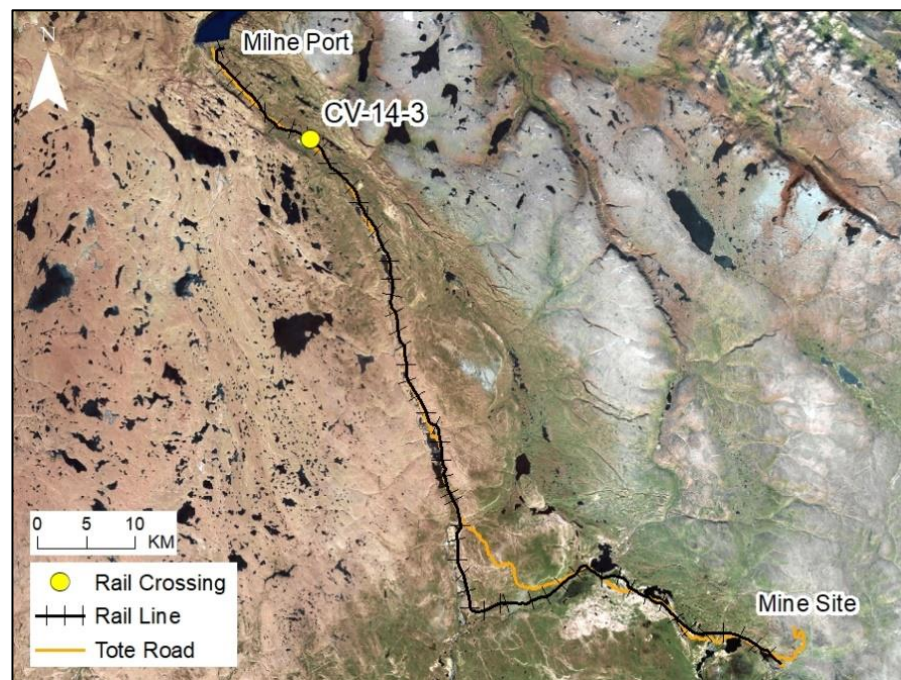
RAIL CV-14-3

LOCATION AND CROSSING DESCRIPTION

Site ID:	CV-14-3	Dates Surveyed:	24-Jun-19	Waterbody Type:	Pond
Project Interaction:	Rail Pond Infilling + Culvert	Centreline UTM Coordinates:	17W 513534 E 7966333 N	Culvert Length (m):	12
Number of Barrels:	1	Culvert Diameter/Span (mm):	900	Slope (%):	1

GENERAL PHYSICAL CHARACTERISTICS

Surface Area (m²):	313	Shoreline Length (m):	109	Drainage Basin Area (m²):	-
Maximum Depth (m):	-			Mean Depth (m):	-



SUMMARY

The North Rail infills two adjacent shallow roadside ponds (each with approximate maximum depth 0.4 m) northeast of the existing Tote Road at CV-14-3. They are part of a former borrow pit used during Tote Road construction and maintenance and are too shallow to support overwintering of either fish species. The ponds also lack connectivity to overwintering habitat or to another nearby roadside pond at CV-14-2. No fish were observed in either pond in 2018 or 2019.

The ponds at CV-14-3 do not provide fish habitat.

BAFFINLAND IRON MINES
MARY RIVER PROJECT

 **North/South Consultants Inc.**
Aquatic Environment Specialists

FISH HABITAT:

ARCTIC CHAR - NO

NINESPINE STICKLEBACK - NO

RAIL CV-14-3

BARRIERS

Upstream/ Downstream	UTM		Barrier Type			Height (m)	Gradient (°)	Description	Site Label
	Easting	Northing	1	2	3				
Inflowing Stream	All inflows appear to be diffuse over terrestrial habitat and not fish-bearing								
Outflowing Stream	All outflows appear to be diffuse over terrestrial habitat and not fish-bearing								

FISH HABITAT POTENTIAL

Nearest Potential Overwintering Habitat - ARCH: N/A **Distance to Nearest Potential Overwintering Habitat - ARCH (km):** N/A

Overwintering Habitat Upstream of Site - ARCH (Y/N): No

Species	Spawning	Overwintering	Rearing	Adults Present
ARCH	N	N	N	N
NNST	N	N	N	N

FISHERIES DATA

Date: 24-Jun-19 **Temperature (°C):** NR **Gear Used:** Visual

Distance Fished (m): N/A **Duration Fished (seconds):** N/A

Species	Season	Effort (Seconds)	Fish Captured	Fish Observed	CPUE (No. Fish/60 Seconds)	Length Range (mm)
ARCH	Spring	N/A	0	0	-	-
NNST	Spring	N/A	0	0	-	-

OTHER NOTES/OBSERVATIONS

The ponds consist of standing water with no defined inflows or outflows. The maximum depth in spring 2019 (0.4 m) was insufficient to support overwintering for either fish species.

RAIL CV-14-3

24-JUN-19



A



B



C



D

Photos 1. Photos of the ponds at CV-14-3 in spring 2019: (A) looking northeast; (B) looking south; and (C) looking southeast. Aerial photo of pond taken in fall 2018 (D).