

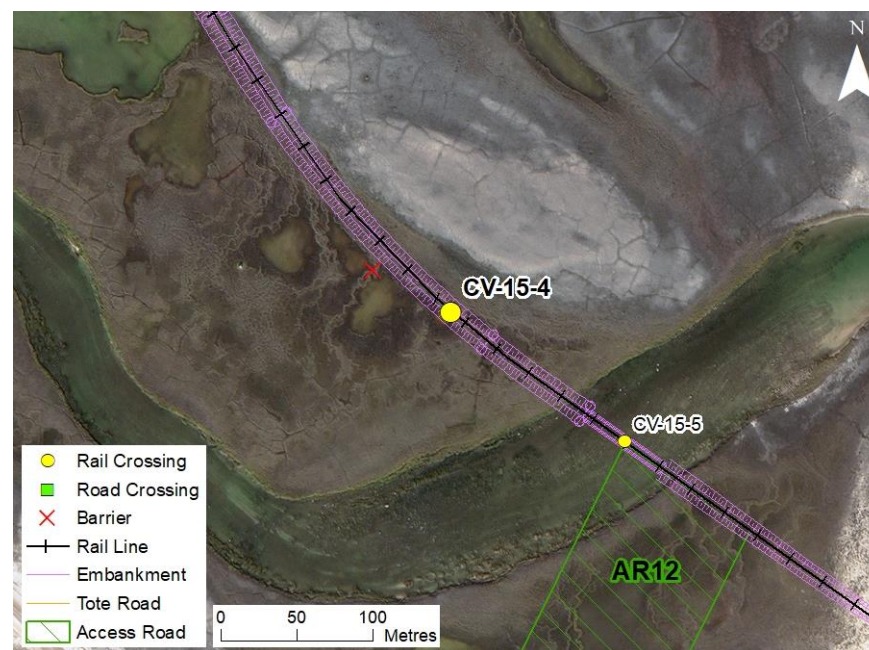
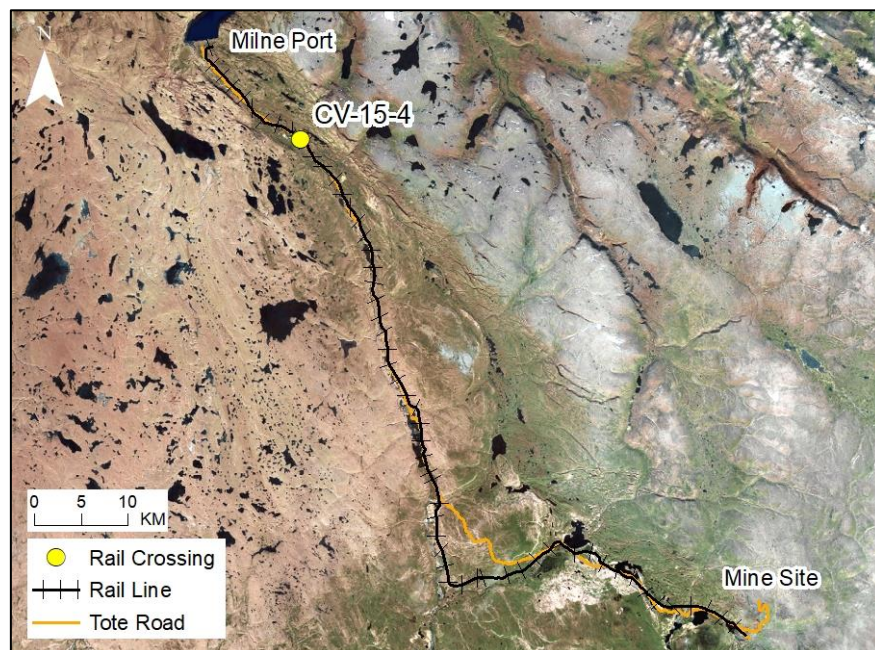
RAIL CV-15-4

LOCATION AND CROSSING DESCRIPTION

Site ID:	CV-15-4	Dates Surveyed:	18-Jun-19	Waterbody Type:	Pond
Project Interaction:	Rail Pond Infilling	Centreline UTM Coordinates:	17W 514123 E 7965711 N	Culvert Length (m):	N/A
Number of Barrels:	N/A	Culvert Diameter/Span (mm):	N/A	Slope (%):	N/A

GENERAL PHYSICAL CHARACTERISTICS

Surface Area (m²):	79	Shoreline Length (m):	32	Drainage Basin Area (m²):	-
Maximum Depth (m):	0.5 (estimated)			Mean Depth (m):	-



SUMMARY

Shallow pond (maximum depth approximately 0.2 m) northeast of the existing Tote Road that will be infilled by the rail at CV-15-4. The pond consists of a series of weakly interconnected pools through shallow (<0.02 m) water. The pool was isolated in spring 2019 and would not be connected to nearby fish habitat at CV-15-2, CV-15-3, or CV-15-5 under any flows. No fish were observed in 2018 or 2019. The pond is of insufficient depth to support overwintering. There is no fish habitat at CV-15-4. A lack of connectivity and fish habitat in this pond were confirmed during a summer/fall visit in 2020.

BAFFINLAND IRON MINES
MARY RIVER PROJECT

 **North/South Consultants Inc.**
Aquatic Environment Specialists

FISH HABITAT:

ARCTIC CHAR - NO

NINESPINE STICKLEBACK - NO

RAIL CV-15-4

BARRIERS

Upstream/ Downstream	UTM		Barrier Type			Height (m)	Gradient (°)	Description	Site Label
	Easting	Northing	1	2	3				
Inflowing Stream	All inflows appear to be diffuse over terrestrial habitat and not fish-bearing								
Outflowing Stream	514072	7965739	other			0.35		Permanent Barrier: Berm of vegetation blocking any outflow	A



A

RAIL CV-15-4

FISH HABITAT POTENTIAL

Nearest Potential Overwintering Habitat - ARCH: N/A

Distance to Nearest Potential Overwintering Habitat - ARCH (km): N/A

Overwintering Habitat Upstream of Site - ARCH (Y/N): No

Species	Spawning	Overwintering	Rearing	Adults Present
ARCH	N	N	N	N
NNST	N	N	N	N

FISHERIES DATA

Date: 18-Jun-19

Temperature (°C): 10

Gear Used: Visual

Distance Fished (m): N/A

Duration Fished (seconds): N/A

Species	Season	Effort (Seconds)	Fish Captured	Fish Observed	CPUE (No. Fish/60 Seconds)	Length Range (mm)
ARCH	Spring	N/A	0	0	-	-
NNST	Spring	N/A	0	0	-	-

INFILL HABITAT

Area	Fines (%)	Gravel (%)	Small Cobble (%)	Large Cobble (%)	Boulders (%)
Nearshore	100	0	0	0	0
Offshore	100	0	0	0	0

OTHER NOTES/OBSERVATIONS

The pond lacks upstream connectivity to overwintering habitat and is not connected downstream to fish habitat.

RAIL CV-15-4

18-JUN-19



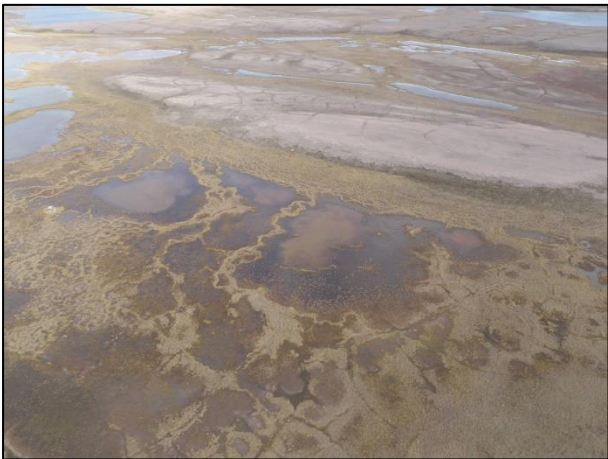
A



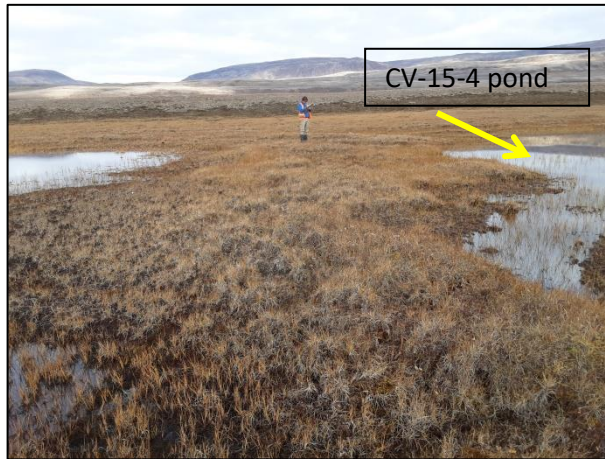
B



C



D



E

Photos 1. Photos of the pond at CV-15-4 in spring 2018, spring 2019, and summer/fall 2020: (A) looking northeast in 2019 (B) looking southwest in 2019; and (C) looking northwest in 2019; (D) aerial photo of pond taken in fall 2018; and (E) vegetation berm barrier between CV-15-4 and ponds to the west in 2020.