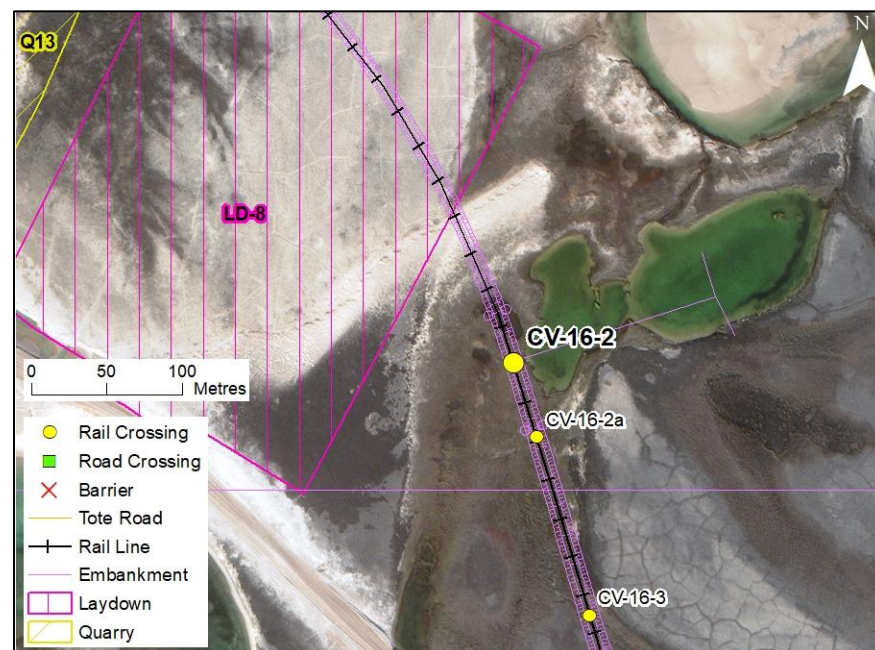
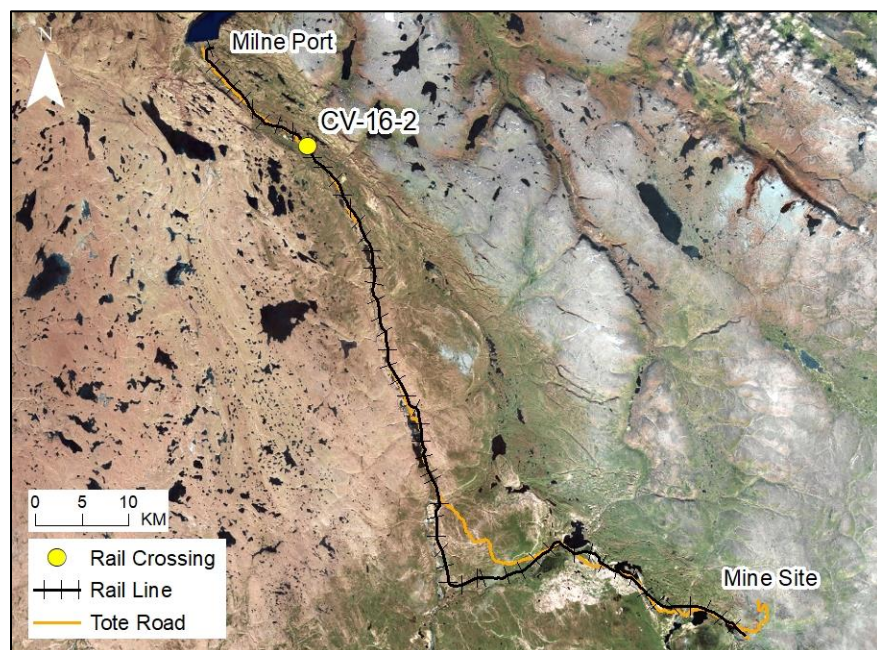


RAIL CV-16-2

LOCATION AND CROSSING DESCRIPTION

Site ID:	CV-16-2	Dates Surveyed:	24-Jun-19	Waterbody Type:	Pond
Project Interaction:	Pond Infilling	Centreline UTM Coordinates:	17W 514751 E 7965084 N	Culvert Length (m):	N/A
Number of Barrels:	N/A	Culvert Diameter/Span (mm):	N/A	Slope (%):	N/A

LOCATION



SUMMARY

This crossing is a dry low point on slightly elevated ground with well-established terrestrial vegetation no discernable depressions or channels. There are small, shallow, isolated ponds to the north and northwest of the crossing and a larger pond (200 X 80 m) to the east that is also shallow and not connected to any other waterbody. The small pond 15 m to the north is to be infilled by the rail. The pond is small with a surface area of 400 m² and a shoreline length of 80 m. It is isolated, shallow (<0.5 m maximum depth) and does not provide fish habitat.

The surveyed UTM at CV-16-2 and the nearby pond infill are not fish habitat.

BAFFINLAND IRON MINES
MARY RIVER PROJECT

 **North/South Consultants Inc.**
Aquatic Environment Specialists

AQUATIC HABITAT:

NO

RAIL CV-16-2

24-JUN-19



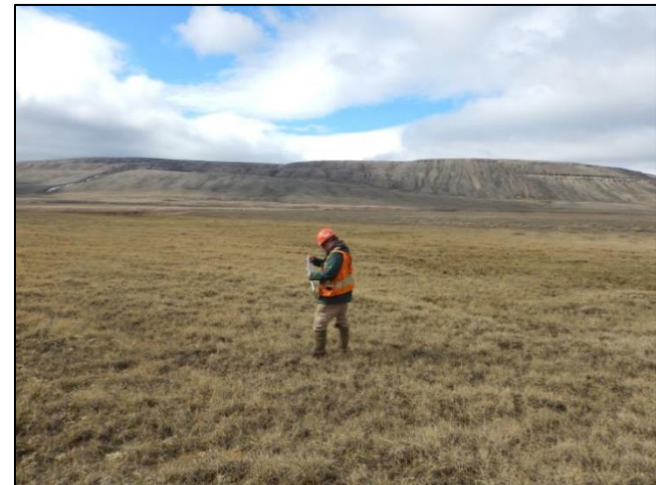
A



B



C



D

Photos 1. Photos of crossing: (A) looking north along the rail centerline to the shallow isolated pond infill site; (B) looking east across the centerline with the larger pond in the background; (C) looking southeast along the centerline; and (D) looking west across the centerline.