

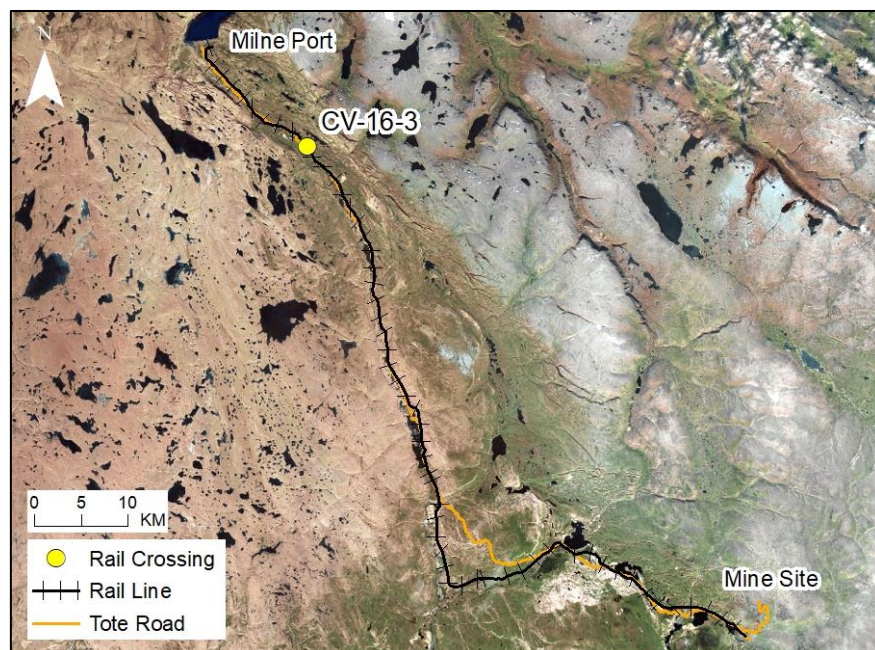
# RAIL CV-16-3

## LOCATION AND CROSSING DESCRIPTION

<b>Site ID:</b>	CV-16-3	<b>Dates Surveyed:</b>	24-Jun-19	<b>Waterbody Type:</b>	Stream
<b>Project Interaction:</b>	Rail Culvert	<b>Centreline UTM Coordinates:</b>	17W 514801 E 7964917 N	<b>Culvert Length (m):</b>	18
<b>Number of Barrels:</b>	1	<b>Culvert Diameter/Span (mm):</b>	900	<b>Slope (%):</b>	1

## GENERAL PHYSICAL CHARACTERISTICS

<b>Flow Regime:</b>	Intermittent	<b>Stream Order:</b>	1	<b>Drainage Basin Area (km<sup>2</sup>):</b>	0.119
---------------------	--------------	----------------------	---	--	-------



## SUMMARY

The North Rail crosses an unnamed intermittent stream at CV-16-3 located approximately 150 m east of the existing Tote Road. In spring 2019, the stream had little water and terminated at a shallow wet point approximately 55 m northwest of the crossing with no additional downstream connectivity. The stream was reduced to stagnant isolated pools in both spring and fall of 2018.

This lack of surface flow represents a permanent barrier to fish access to the rail crossing. There is no fish habitat at CV-16-3.

**BAFFINLAND IRON MINES  
MARY RIVER PROJECT**

**North/South Consultants Inc.**  
Aquatic Environment Specialists

**FISH HABITAT:**

**ARCTIC CHAR - NO**

**NINESPINE STICKLEBACK - NO**



# RAIL CV-16-3

## BARRIERS

Upstream/ Downstream	UTM		Barrier Type			Height (m)	Gradient (°)	Description	Site Label
	Easting	Northing	1	2	3				
Downstream	514775	7964960	SSF					Permanent Barrier: Stream ends at small ponding approximately 50 m downstream of crossing with no downstream connectivity	A



A

# RAIL CV-16-3

## FISH HABITAT POTENTIAL

**Nearest Potential Overwintering Habitat - ARCH:** N/A

**Distance to Nearest Potential Overwintering Habitat - ARCH (km):** N/A

**Overwintering Habitat Upstream of Site - ARCH (Y/N):** No

Species	Spawning	Overwintering	Rearing	Adults Present
ARCH	N	N	N	N
NNST	N	N	N	N

## FISHERIES DATA

**Date:** 24-Jun-19

**Temperature (°C):** NR

**Gear Used:** Visual

**Distance Fished (m ):** N/A

**Duration Fished (seconds):** N/A

Species	Season	Effort (Seconds)	Fish Captured	Fish Observed	CPUE (No. Fish/60 Seconds)	Length Range (mm)
ARCH	Spring	N/A	0	0	-	-
NNST	Spring	N/A	0	0	-	-

## COMMENTS

The crossing is located on a shallow stream that has no downstream connectivity. In spring 2019 surface flow ended approximately 55 m downstream of the crossing. This site does not provide fish habitat.



# RAIL CV-16-3

24-JUN-19



A



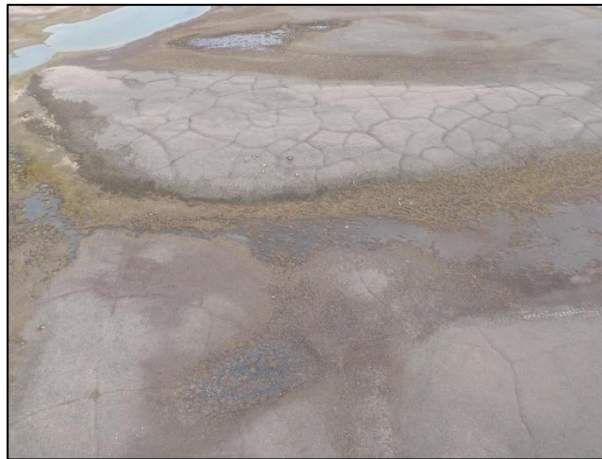
B



C



D



E

**Photos 1.** Ground photos taken at the crossing centreline in spring 2019: (A) facing upstream; (B) facing downstream; (C) across (right bank looking at left bank) and summer 2018: (D) facing downstream. Aerial photo of crossing area during fall 2018 (E).