

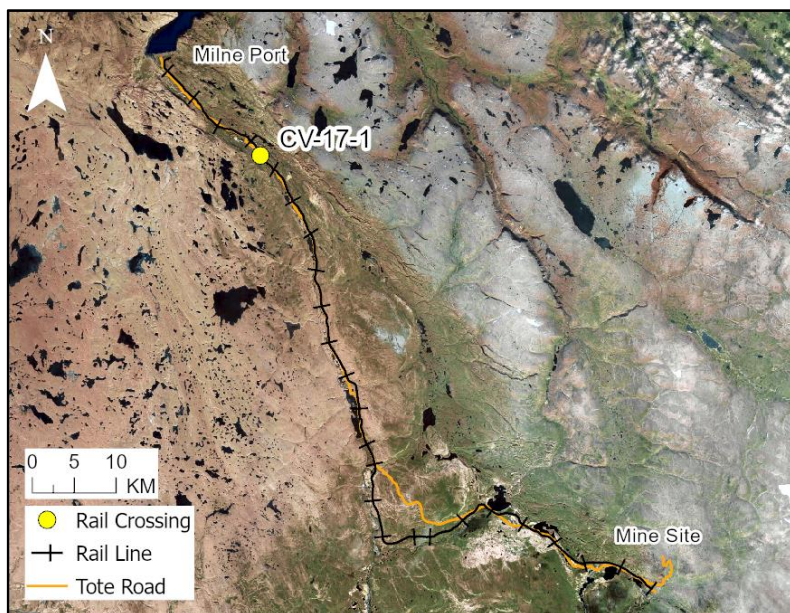
# RAIL CV-17-1

## LOCATION AND CROSSING DESCRIPTION

<b>Site ID:</b>	CV-17-1	<b>Dates Surveyed:</b>	24-Jun-19	<b>Waterbody Type:</b>	Pond
<b>Project Interaction:</b>	Rail Pond Infilling + Culvert	<b>Centreline UTM Coordinates:</b>	17W 515266 E 7964028 N	<b>Culvert Length (m):</b>	18
<b>Number of Barrels:</b>	1	<b>Culvert Diameter/Span (mm):</b>	900	<b>Slope (%):</b>	2

## GENERAL PHYSICAL CHARACTERISTICS

<b>Surface Area (m<sup>2</sup>):</b>	1,131	<b>Shoreline Length (m):</b>	172	<b>Drainage Basin Area (m<sup>2</sup>):</b>	-
<b>Maximum Depth (m):</b>	1.0 (estimated)			<b>Mean Depth (m):</b>	-



## SUMMARY

Shallow, isolated pond (approximate maximum depth 1 m) adjacent to the Tote Road. The pond is a former borrow pit used during road construction and maintenance, lacks inflows and outflows and supplied by rain and snowmelt. The pond is not fish habitat.

BAFFINLAND IRON MINES  
MARY RIVER PROJECT

 **North/South Consultants Inc.**  
Aquatic Environment Specialists

FISH HABITAT:

ARCTIC CHAR - NO

NINESPINE STICKLEBACK - NO

# RAIL CV-17-1

24-JUN-19



A



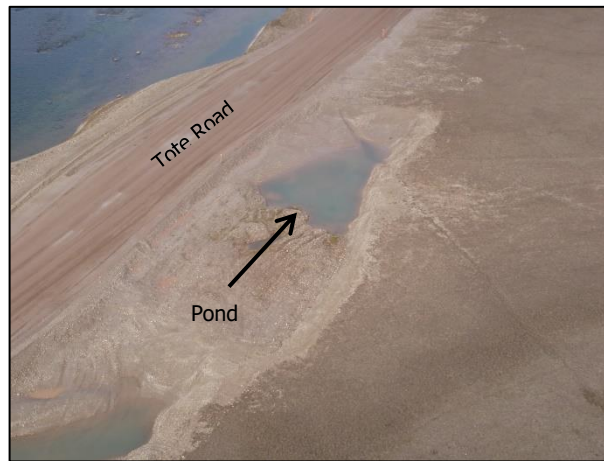
B



C



D



E



F

**Photos 1.** Photos of the pond at CV-17-1: (A) at the encroachment site looking west toward the Tote Road; (B) looking to the northwest across the pond; (C) looking east towards the encroachment site; (D) looking NW to SE across the pond; and (E) aerial image of pond (from fall 2018).