

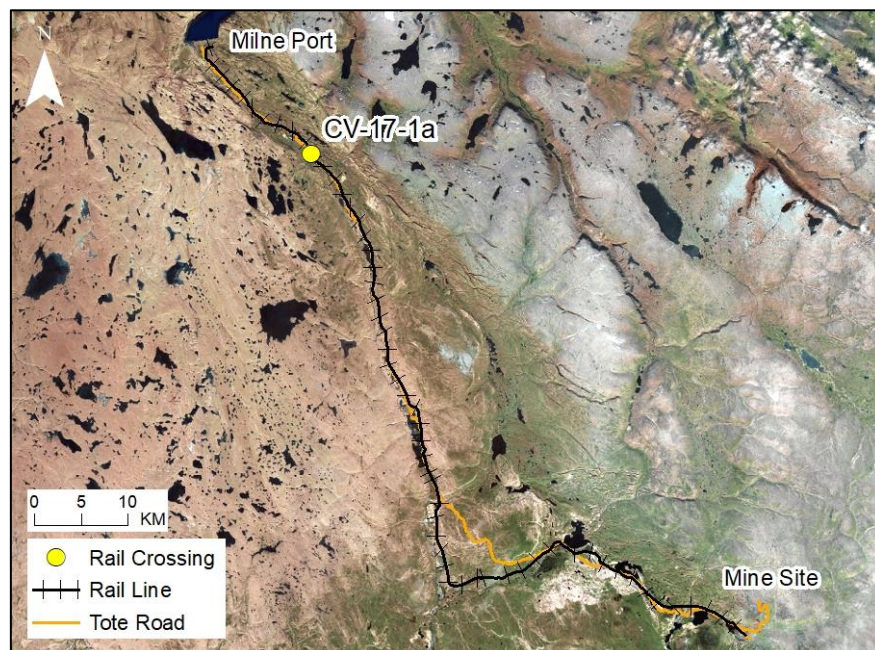
RAIL CV-17-1A

LOCATION AND CROSSING DESCRIPTION

Site ID:	CV-17-1a	Dates Surveyed:	24-Jun-19	Waterbody Type:	Pond
Project Interaction:	Rail Pond Infilling + Culvert	Centreline UTM Coordinates:	17W 515217 E 7964118 N	Culvert Length (m):	12
Number of Barrels:	1	Culvert Diameter/Span (mm):	900	Slope (%):	2

GENERAL PHYSICAL CHARACTERISTICS

Surface Area (m²):	222	Shoreline Length (m):	64	Drainage Basin Area (m²):	-
Maximum Depth (m):	-			Mean Depth (m):	-



SUMMARY

A shallow pond (approximate maximum depth 1.0 m) east of the existing Tote Road that will be infilled by the rail at CV-17-1a. It is a former borrow pit used during construction and maintenance of the Tote Road and lacks upstream or downstream connections to fish habitat. The pond supplied by rain and snowmelt and is too shallow to provide fish overwintering habitat. No fish were observed in 2019.

There is no fish habitat at CV-17-1a.

BAFFINLAND IRON MINES
MARY RIVER PROJECT

 **North/South Consultants Inc.**
Aquatic Environment Specialists

FISH HABITAT:

ARCTIC CHAR - NO

NINESPINE STICKLEBACK - NO

RAIL CV-17-1A

BARRIERS

Upstream/ Downstream	UTM		Barrier Type			Height (m)	Gradient (°)	Description	Site Label
	Easting	Northing	1	2	3				
Inflowing Stream	All inflows appear to be diffuse over terrestrial habitat and not fish-bearing								
Outflowing Stream	All outflows appear to be diffuse over terrestrial habitat and not fish-bearing								

FISH HABITAT POTENTIAL

Nearest Potential Overwintering Habitat - ARCH:	N/A	Distance to Nearest Potential Overwintering Habitat - ARCH (km):	N/A
Overwintering Habitat Upstream of Site - ARCH (Y/N):	No		

Species	Spawning	Overwintering	Rearing	Adults Present
ARCH	N	N	N	N
NNST	N	N	N	N

FISHERIES DATA

Date:	24-Jun-19	Temperature (°C):	NR	Gear Used:	Visual
Distance Fished (m):	N/A	Duration Fished (seconds):	N/A		

Species	Season	Effort (Seconds)	Fish Captured	Fish Observed	CPUE (No. Fish/60 Seconds)	Length Range (mm)
ARCH	Spring	N/A	0	0	-	-
NNST	Spring	N/A	0	0	-	-

OTHER NOTES/OBSERVATIONS

The pond consists of standing water with no inflows or outflows. The maximum depth is approximately 1 m and would not provide overwintering habitat.

RAIL CV-17-1A

24-JUN-19



A



B



C

Photos 1. Photos of the pond at CV-17-1a in spring 2019: (A) looking northeast; (B) looking southwest; and (C) looking southeast.