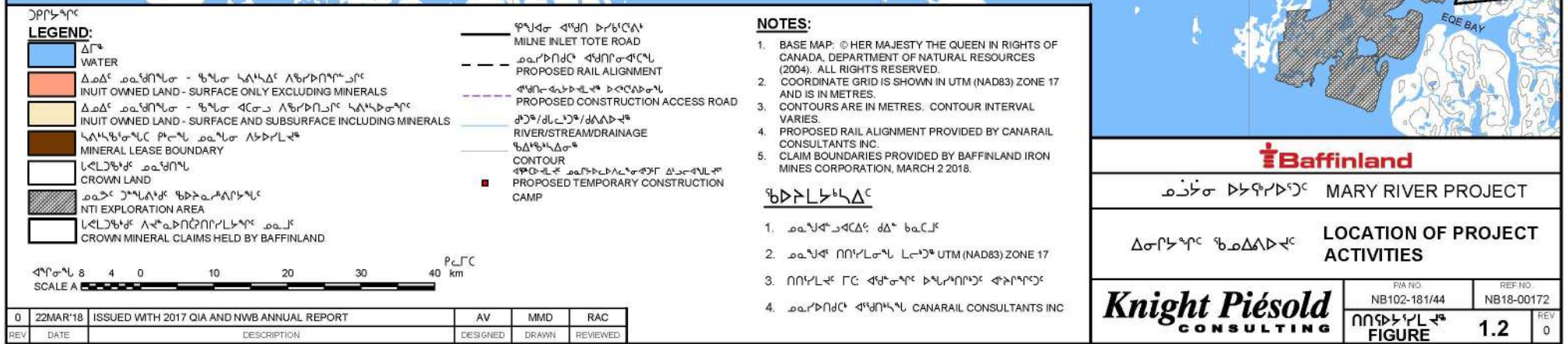
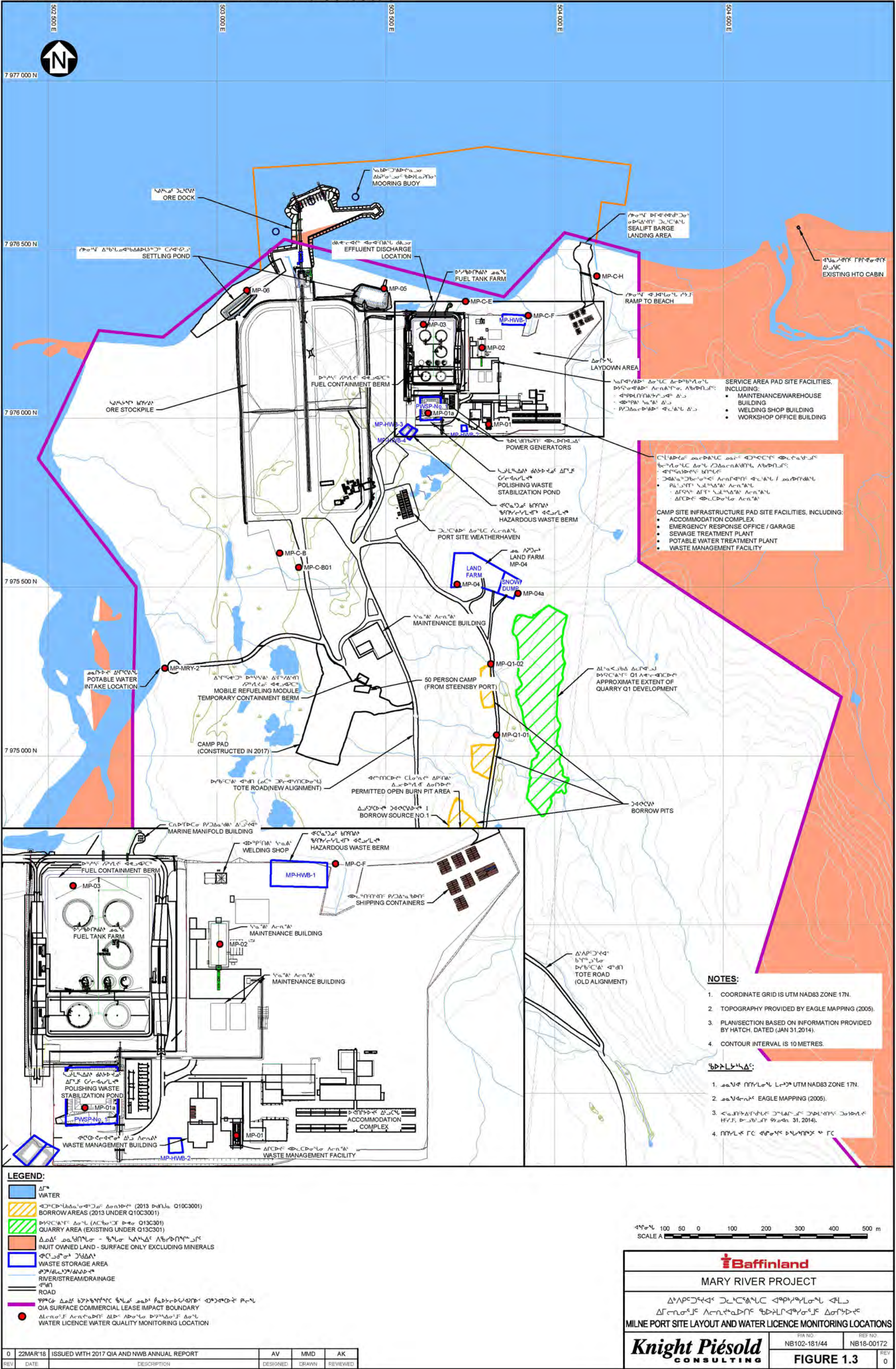
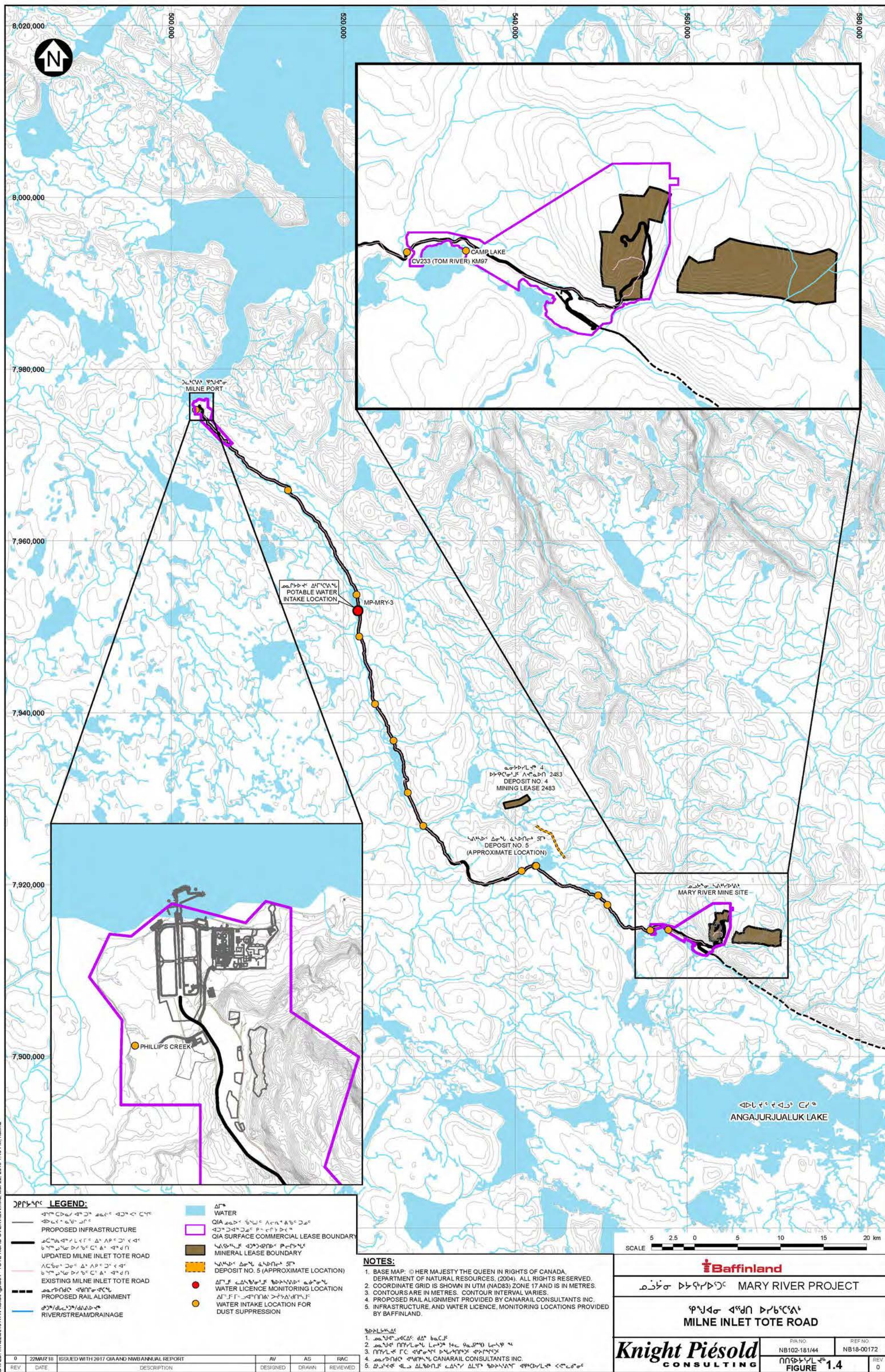


## **FIGURES**

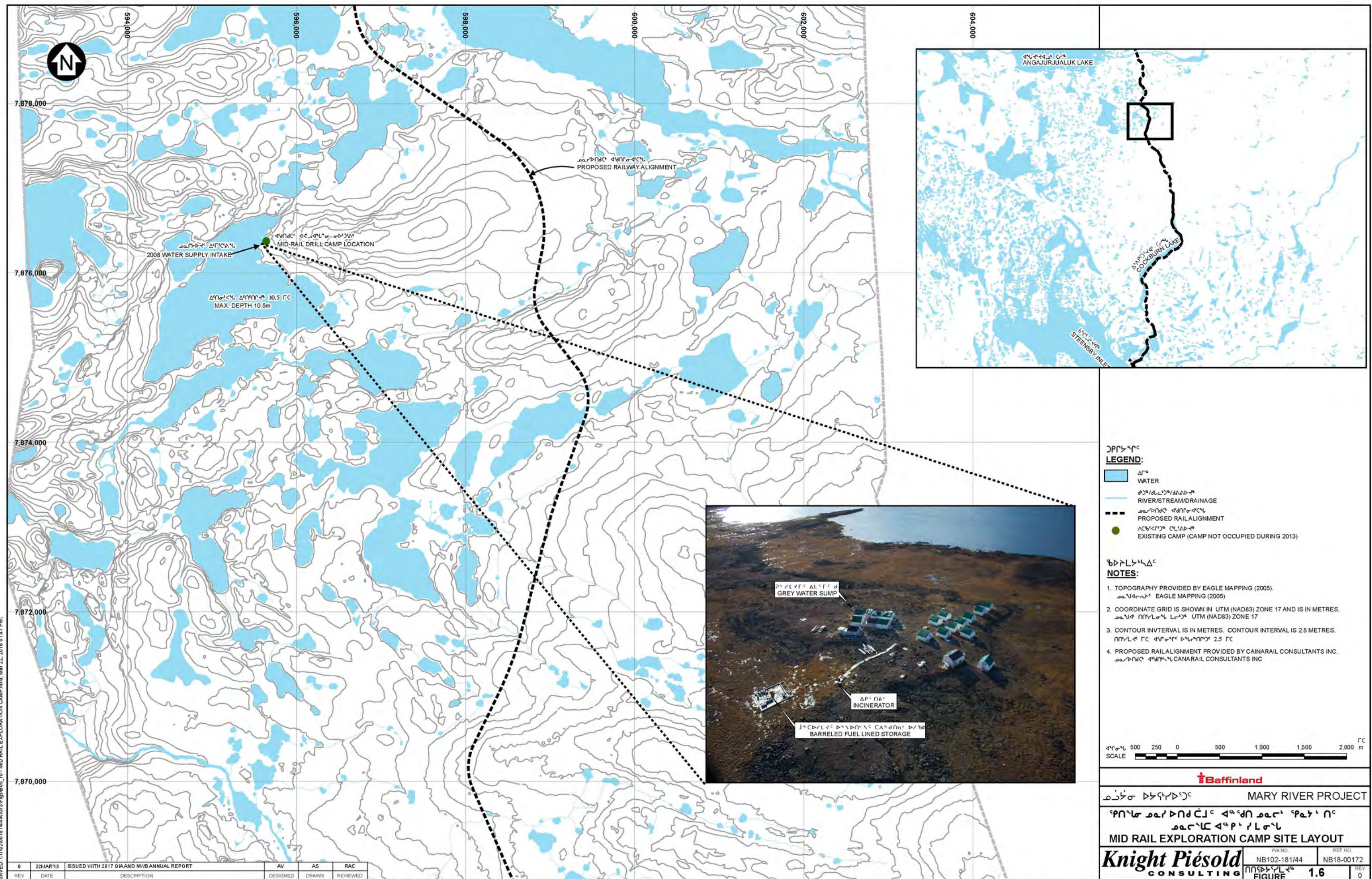




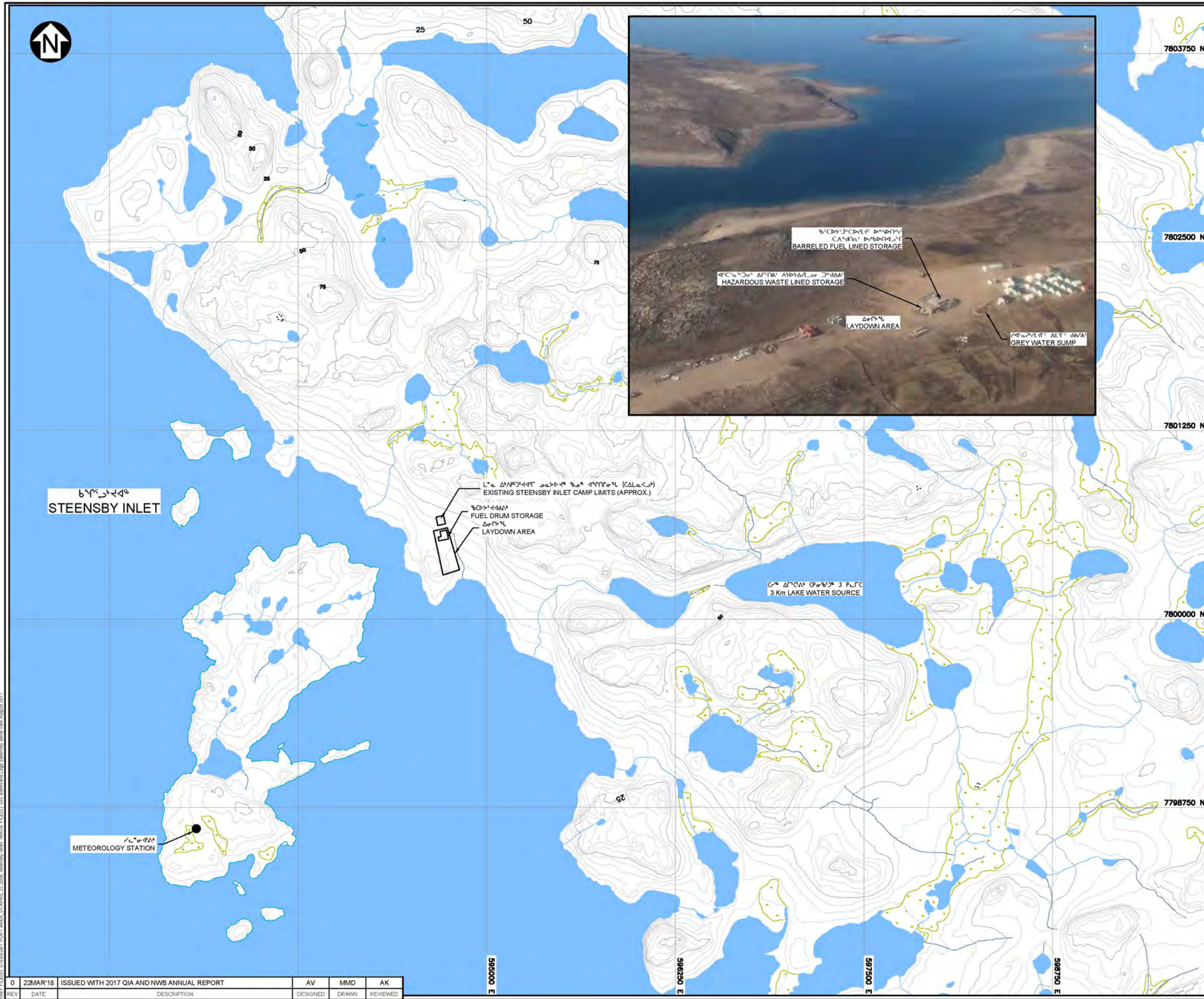








SAVED: 11/02/2018 14:44:46 PICTURES: 3/22/2018 4:27:33 PM, MDEMERS PRINTED: 3/22/2018 4:27:57 PM, Layout1, MDEMERS  
11/02/2018 14:44:46 PICTURES: 3/22/2018 4:27:33 PM, MDEMERS PRINTED: 3/22/2018 4:27:57 PM, Layout1, MDEMERS



**LEGEND:**

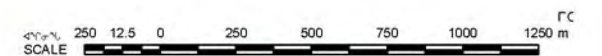
- WATER
- RIVER/STREAM/DRAINAGE
- WETLAND

**NOTES:**

- COORDINATE GRID IS UTM (NAD83) ZONE 17 AND IS IN METRES.
- CONTOUR INTERVAL IS 5 METRES.
- TOPOGRAPHY PROVIDED BY EAGLE MAPPING (2005).
- STEENSBY INLET INFRASTRUCTURE PROVIDED BY GENIVAR, DECEMBER 9, 2008.

**REFERENCES:**

- UTM (NAD83) Zone 17
- UTM (NAD83) Zone 17
- Eagle Mapping (2005)
- Genivar



**Baffinland**

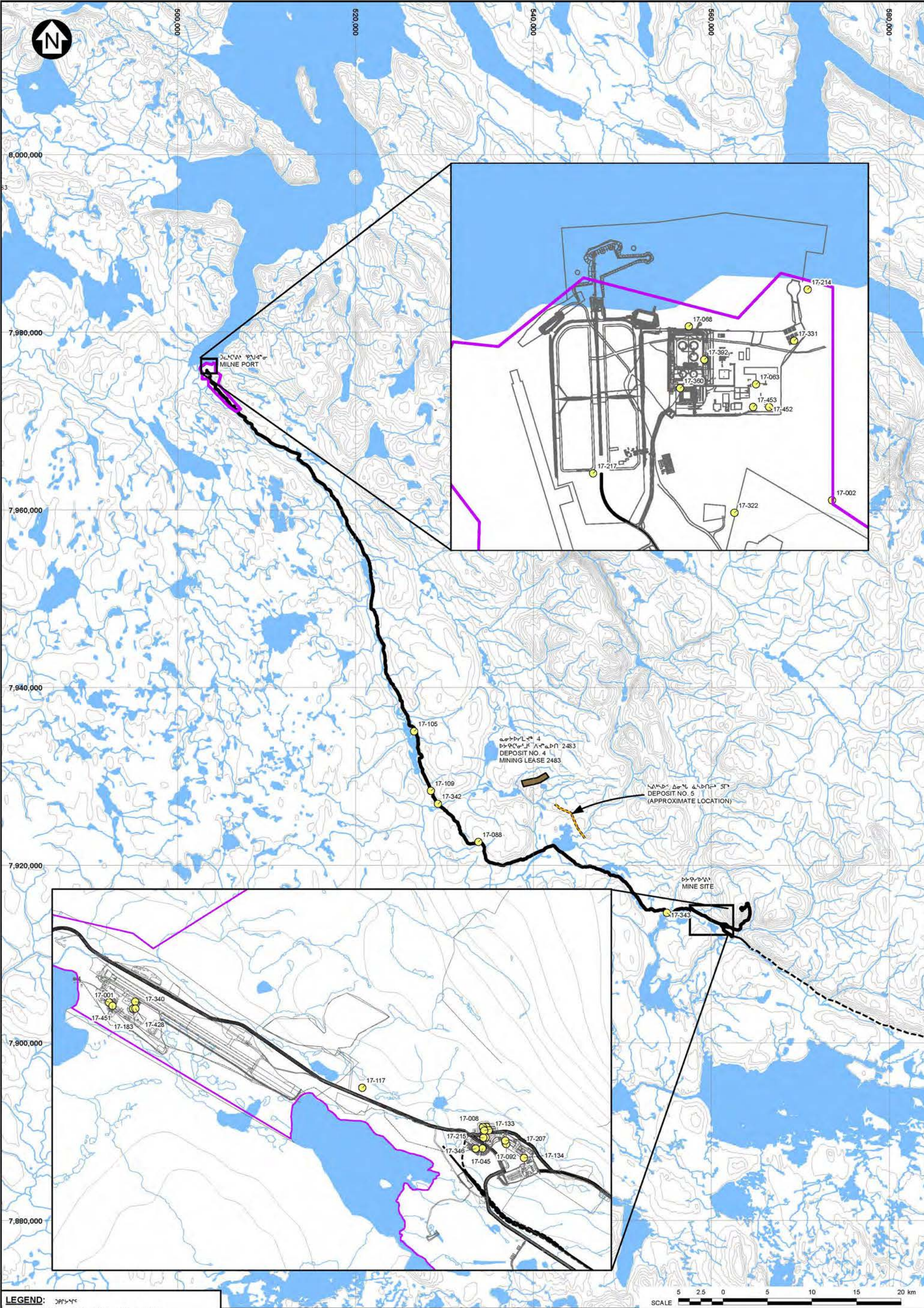
MARY RIVER PROJECT

STEENSBY PORT  
EXPLORATION CAMP SITE LAYOUT

**Knight Piésold**  
CONSULTING

FIGURE 1.7

REV 0



**LEGEND:**

●	UNAUTHORIZED DISCHARGE LOCATION	—	MINERAL LEASE BOUNDARY
—	MILNE INLET TOTE ROAD	—	DEPOSIT NO. 5 (APPROXIMATE LOCATION)
—	PROPOSED RAIL ALIGNMENT	—	WATER
—	RIVER/STREAM/DRAINAGE		
—	QIA SURFACE COMMERCIAL LEASE BOUNDARY		

- NOTES:**
1. BASE MAP: © HER MAJESTY THE QUEEN IN RIGHTS OF CANADA, DEPARTMENT OF NATURAL RESOURCES, (2004). ALL RIGHTS RESERVED.
  2. COORDINATE GRID IS SHOWN IN UTM (NAD83) ZONE 17 AND IS IN METRES.
  3. CONTOURS ARE IN METRES. CONTOUR INTERVAL VARIES.
  4. PROPOSED RAIL ALIGNMENT PROVIDED BY CANARAIL CONSULTANTS INC.
  5. INFRASTRUCTURE, AND WATER LICENCE, MONITORING LOCATIONS PROVIDED BY BAFFINLAND.

MARY RIVER PROJECT

LOCATIONS OF UNAUTHORIZED DISCHARGES IN 2017

PIA NO.	REF NO.
NB102-181/44	NB18-00172
FIGURE 1.8	REV 0

SAVED: 13/02/2018 14:44:56 (G:\SF\95806\_10 - UNAUTHORIZED DISCHARGES.mxd; Mar 22, 2018 1:45 PM; /relina)