

**APPENDIX D**  
**2017 PHOTO JOURNAL**

**APPENDIX D.1**  
**MINE SITE PHOTO SHEET**



**PHOTO 1** – Deposit No. 1 and Mine Haul Road – August 2017



**PHOTO 2** – Deposit No. 1 (Nuluujaak Pit) mining operations – October 2017



**PHOTO 3** – Crushing operations – October 2017



**PHOTO 4** – Shrouding installed on ore crushers during 2017 to reduce dust emissions – March 2018





**PHOTO 5** – Perimeter drainage ditch construction for Crusher Pad expansion – May 2017



**PHOTO 6** – Ore haul truck loaded with ore at Mine Site – October 2017





**PHOTO 7** – Main Mine Site Infrastructure Pad– October 2017



**PHOTO 8** – Mine Site Airstrip and Supporting Infrastructure – October 2017





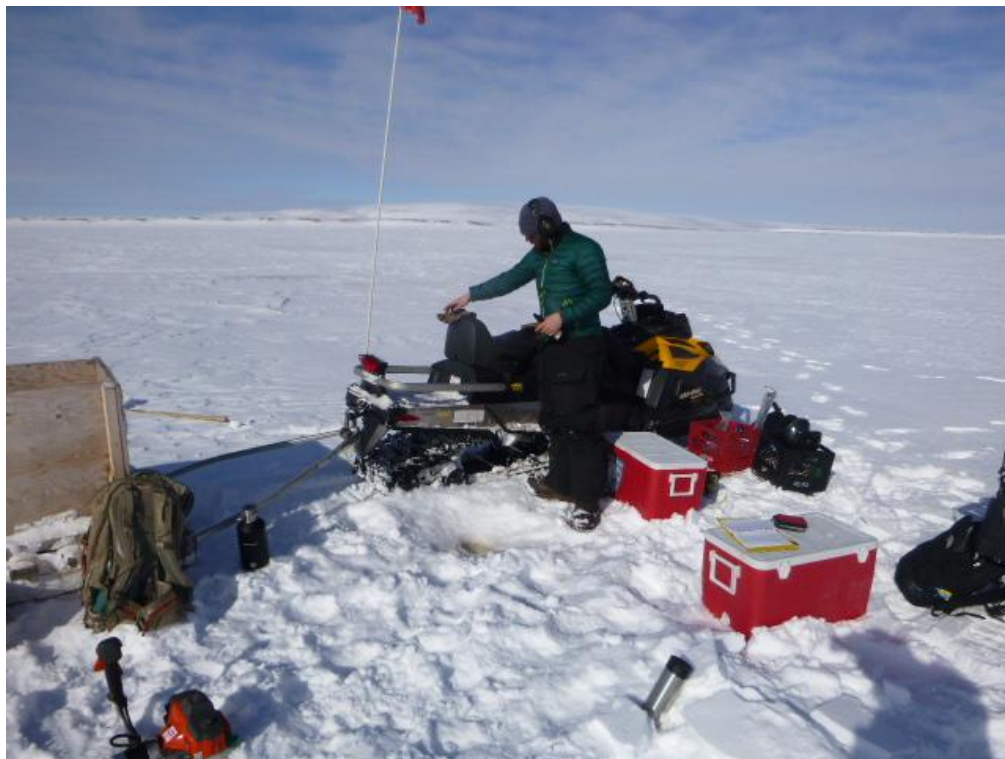
**PHOTO 9** – Construction of check dams along Camp Lake Access Road – June 2017



**PHOTO 10** – Downstream of CV-187 (Upgraded April 2017) – July 2017



**PHOTO 11** – Maintenance work completed on Camp Lake check dams – June 2017



**PHOTO 12** – Winter lake sampling for AEMP – April 2017





**PHOTO 13** – Routine water quality and flow monitoring – July 2017



**PHOTO 14** – Summer lake sampling for AEMP – August 2017



**PHOTO 15** – Waste Rock Facility with emergency ditches/sumps constructed down-gradient to contain observed seepage – September 2017



**APPENDIX D.2**  
**TOTE ROAD PHOTO SHEET**



**PHOTO 1** – Ore haul truck travels down the Tote Road – October 2017



**PHOTO 2** - Placement of aggregate to reinforce embankment near CV-174 outlet - June 2017





**PHOTO 3** – Armouring of ditching near CV-174 – June 2017



**PHOTO 4** – Replacement of culverts at BG-32 - September 2017



**PHOTO 5** - Completion of slope stabilization at Km 90 – July 2017



**PHOTO 6** – Armouring of roadside ditching near Km 85.5 – June 2017

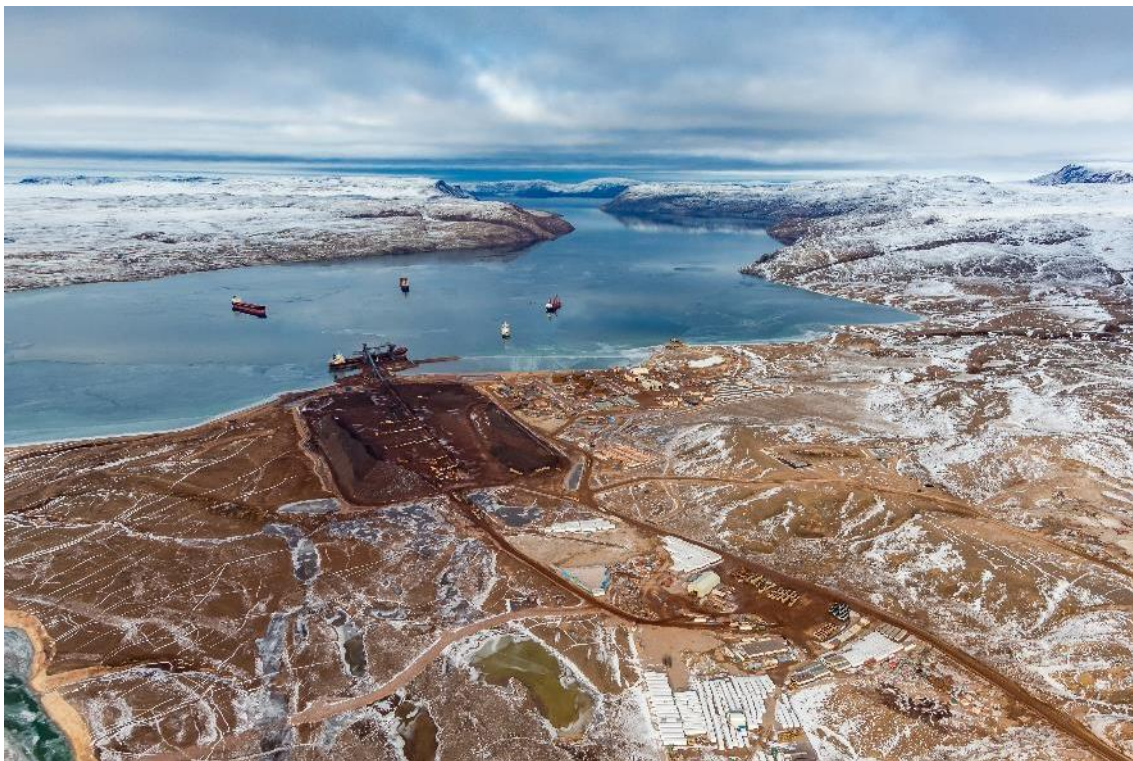


## **APPENDIX D.3**

### **MILNE PORT & BRUCE HEAD CAMP PHOTO SHEET**



**PHOTO 1** – Aerial view of Milne Port and ore stockpiles - July 2017

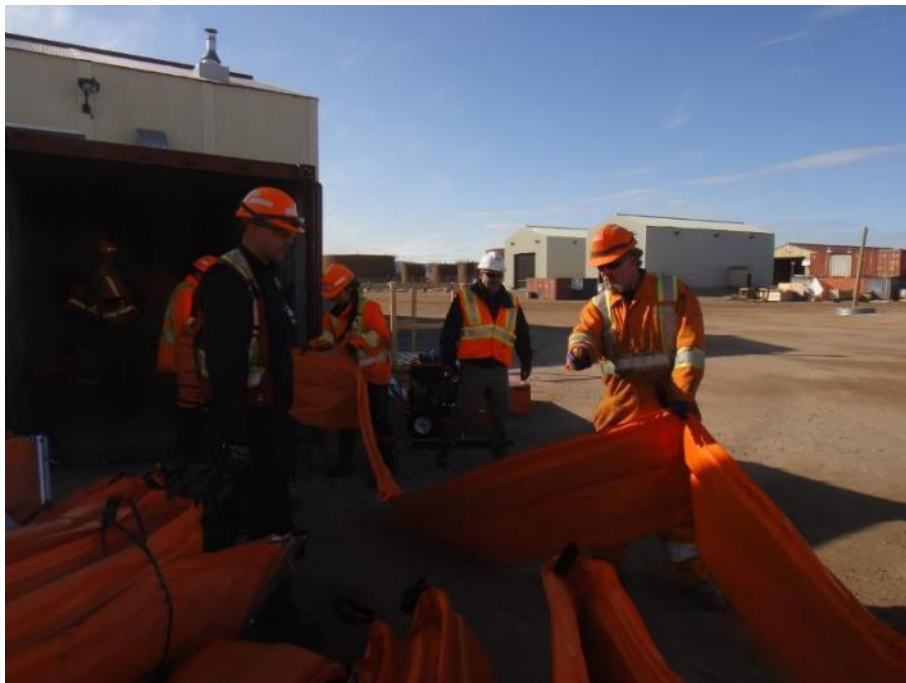


**PHOTO 2** – Milne Port operations – October 2017





**PHOTO 3** – Milne Port shiploader loads an ore carrier vessel – October 2017



**PHOTO 4** – Marine Spill Response Training at Milne Port, August 2017



**PHOTO 5** – Deploying a containment boom and service boat during the Marine Spill Response Training - August 2017



**PHOTO 6** – Bruce Head Marine Mammal Monitoring Camp - September 2017





**PHOTO 7** - Observation station at Bruce Head Camp - July 2017



**PHOTO 8** - Constructed New Milne Port Camp Pad - September 2017

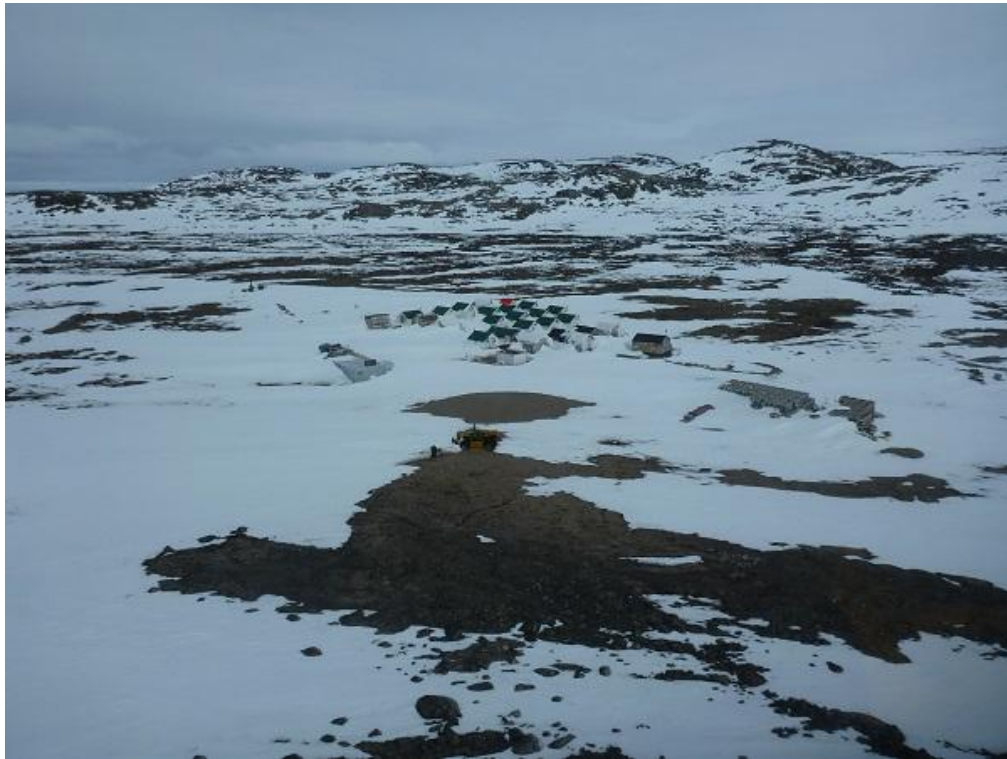


**PHOTO 9** – Construction of Milne Port Camp Pad Diversion Ditch – October 2017



## **APPENDIX D.4**

### **STEENSBY PORT AND MID-RAIL CAMPS PHOTO SHEET**



**PHOTO 1** – Steensby Port Camp – June 2017



**PHOTO 2** – Aerial view of Steensby Port Camp – September 2017





**PHOTO 3** – Aerial view of Mid-Rail Camp – May 2017

**APPENDIX D.5**  
**COMMUNITY CONSULTATION PHOTO SHEET**





**PHOTO 1** – Community Consultation at Clyde River – May 2017



**PHOTO 2** – Community Tour, Igloolik – September 2017



**PHOTO 3** – Community Tour, Clyde River – September 2017