

APPENDIX D
PHOTO JOURNAL

APPENDIX D.1
MINE SITE PHOTO SHEET



PHOTO 1 – Deposit No. 1 and Mine Haul Road – July 2018

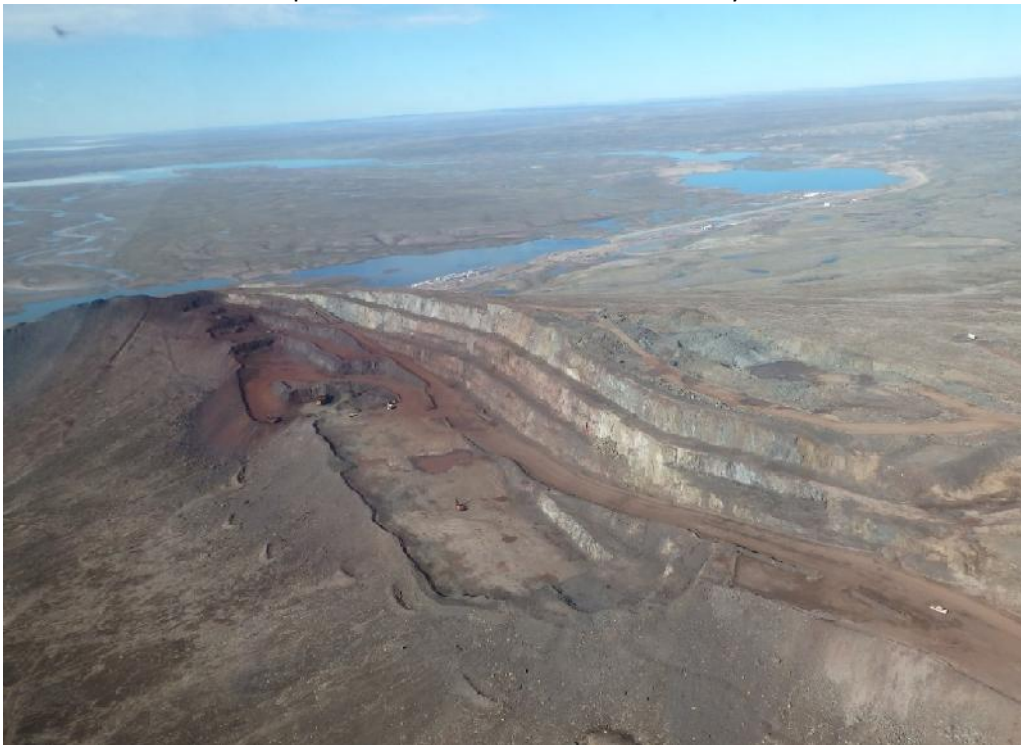


PHOTO 2 – Deposit No. 1 (Nuluujaak Pit) mining operations – July 2018



PHOTO 3 – Crusher Facility surge bin shrouding – July 2018



PHOTO 4 – Crusher Facility screen feed conveyor shrouding – July 2018



PHOTO 5 – Crusher Facility equipment loading ore into jaw – October 2018



PHOTO 6 – Crusher Facility surface water management pond expansion – September 2018



PHOTO 7 – Aerial view of the Mine Site Complex – June 2018



PHOTO 8 – 793 Truck Shop construction – November 2018



PHOTO 9 – Aerial view of Emulsion Plant – July 2018



PHOTO 10 – Aerial view of Mine Site Landfill Facility – July 2018



PHOTO 11 – Completed construction of Landfill Facility Fence – September 2018



PHOTO 12 – Aerial view of QMR2 Quarry – July 2018



PHOTO 13 – Sailiivik Camp Complex – August 2018



PHOTO 14 – Camp Lake check dams– May 2018



PHOTO 15 – Camp Lake drainage channel check dam – May 2018

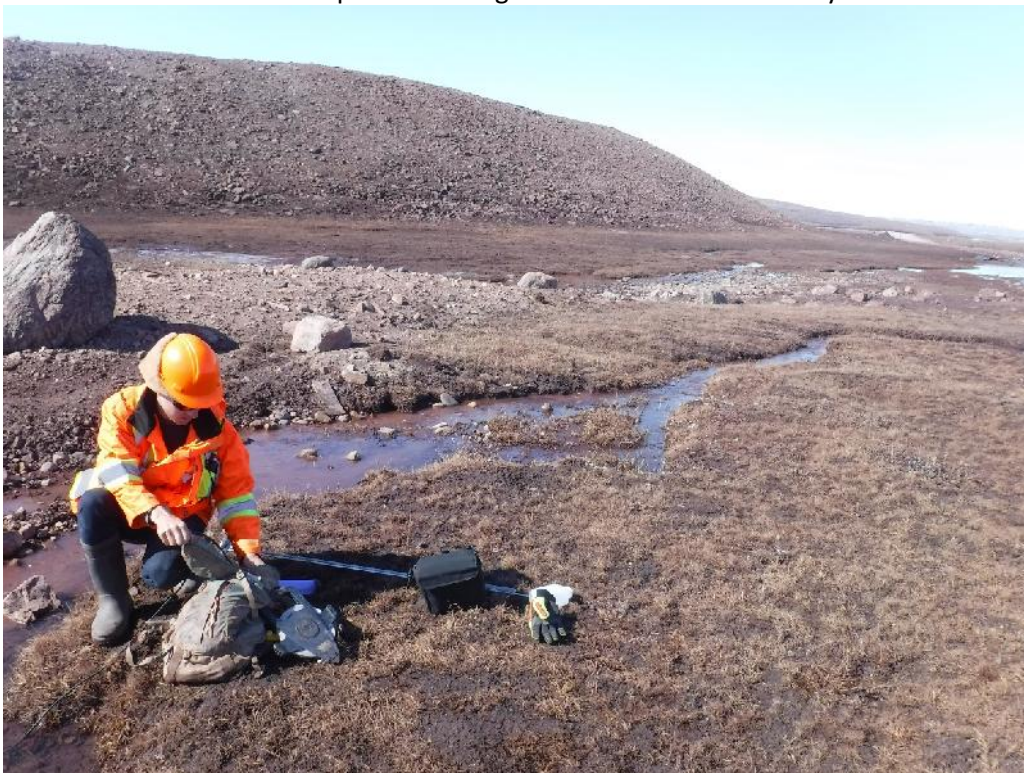


PHOTO 16 – Routine water quality and flow monitoring – June 2018



PHOTO 17 – Routine water quality and flow monitoring – July 2018



PHOTO 18 – Winter AEMP lake sampling program – April 2018



PHOTO 19 – Summer AEMP lake sampling program – August 2018



PHOTO 20 – Hydrology Program – July 2018



PHOTO 21 – Camp Lake Tributary silt curtain installation –June 2018



PHOTO 22 – Aerial view of Mine Site Airstrip – July 2018



PHOTO 23 – Aerial view of Exploration Camp – July 2018



PHOTO 24 – Mine Site PWSPs – September 2018

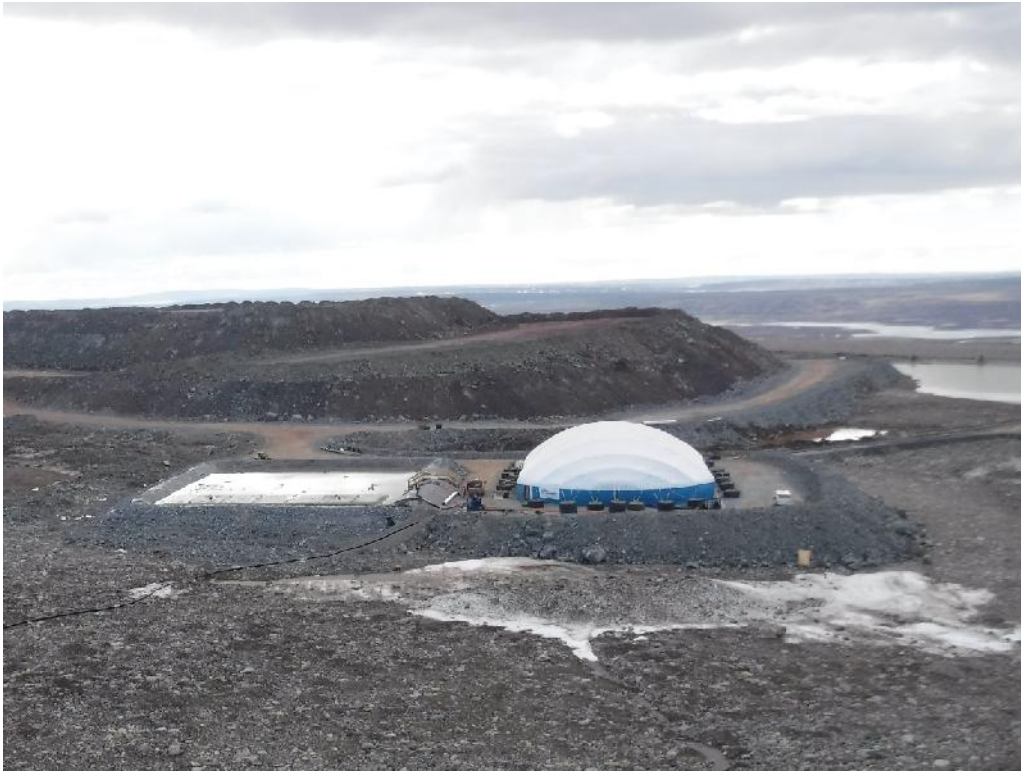


PHOTO 25 – Waste Rock Facility Water Treatment Plant – June 2018



PHOTO 26 – Waste Rock Facility – July 2018



PHOTO 27 – BH 1 Borehole Final Installation O2 Sensors & Thermistors– 2019

APPENDIX D.2
TOTE ROAD PHOTO SHEET



PHOTO 1 – Dust suppression water truck on Tote Road – July 2018



PHOTO 2 – Dust suppression calcium truck on Tote Road – July 2018



PHOTO 3 – Culvert CV-244 replacement – January 2018



PHOTO 4 – Sediment control measures at culvert BG-27 – June 2018



PHOTO 5 – R3 Laydown active migratory bird nest survey – June 2018



PHOTO 6 – Snowmobile crossing at Km 90 – December 2018



PHOTO 7 – Water quality monitoring – July 2018

APPENDIX D.3
MILNE PORT PHOTO SHEET



PHOTO 1 – Aerial view of Milne Port – August 2018

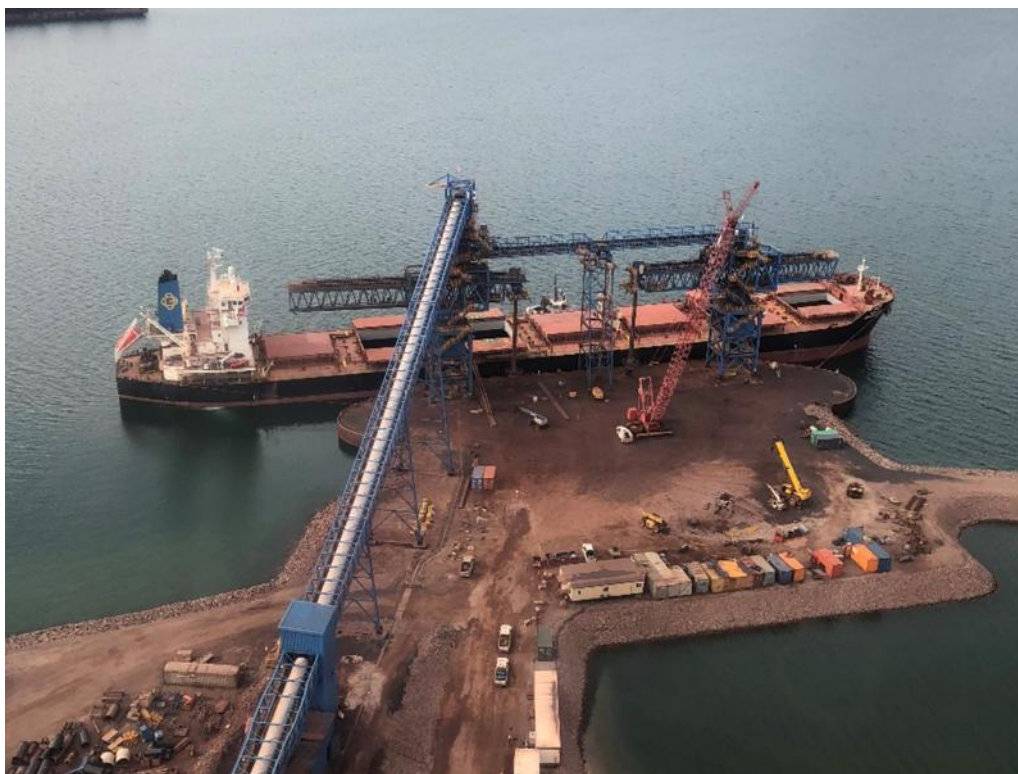


PHOTO 2 – Aerial view of ship loader and ore dock – August 2018



PHOTO 3 – The *Botnica* carrying ship based observers for marine wildlife monitoring – July 2018



PHOTO 4 – Aerial view of bulk fuel tanker in Milne inlet – July 2018



PHOTO 5 – Aerial view loading ore ship – July 2018



PHOTO 6 – Aerial view of Milne Port Bulk Fuel Storage Facility – September 2018



PHOTO 7 – 13 ML Fuel Tank construction – September 2018



PHOTO 8 – Mooring Deployment Vessel in Milne Inlet – September 2018



PHOTO 9 – Milne Port Ore Stockpile Facility – East Pond (MP-05) – August 2018



PHOTO 10 – Milne Port Ore Stockpile Facility – West Pond (MP-06) – August 2018



PHOTO 11 – Hydrology Program – August 2018



PHOTO 12 – Routine water quality and flow monitoring – July 2018



PHOTO 13 – Aerial view of Landfarm Facility – September 2018



PHOTO 14 – Aerial view of Q1 Quarry – September 2018



PHOTO 15 – Oil Pollution Emergency Plan Training – July 2018



PHOTO 16 – Oil Pollution Emergency Plan Training – July 2018

APPENDIX D.4

STEENSBY PORT, MID-RAIL AND BRUCE HEAD CAMPS PHOTO SHEET



PHOTO 1 – Aerial view of Bruce Head Camp – September 2017



PHOTO 2 – Aerial view of Steensby Port Camp – August 2018



PHOTO 3 – Aerial view of Mid-Rail Camp – August 2018

APPENDIX D.5
COMMUNITY CONSULTATION PHOTO SHEET



PHOTO 1 – Baffinland Community Feast Tour, Arctic Bay – December 2018



PHOTO 2 – Baffinland Community Feast Tour, Igloolik – December 2018



PHOTO 3 – Employment and Training Opportunities Information Tour, Igloolik – September 2018



PHOTO 4 – Annual Project Review Forum, Hall Beach – April 2018