



| PROJECT SAFETY  | First Aid | Medical Aid | Property Damage | Equipment Damage | Environmental Release | Fire | Vehicle / Equipment Incident (Moving) | Project Total | Near Misses | Hazard ID Cards |
|-----------------|-----------|-------------|-----------------|------------------|-----------------------|------|---------------------------------------|---------------|-------------|-----------------|
| Project to Date | 0         | 0           | 0               | 0                | 0                     | 0    | 0                                     | 0             | 0           | 0               |

| DESCRIPTION OF INCIDENTS                 | Shift | Toolbox Topic          |
|--|-------|------------------------|
|  | Days  | When is a JHA required |
| TOTAL REPORTABLE ACCIDENT FREQUENCY RATE | 0     |                        |
| LOST TIME ACCIDENT FREQUENCY RATE        | 0     |                        |

| DAILY ACTIVITIES COMPLETED  |
|---|
| Worked on WRF ditch. Survey laid out Viper Pad, Started to excavate subgrade. |

| PLANNED ACTIVITIES FOR NEXT DAY   |
|---|
| Keep working on WRF ditch. Start placing GEO Textile and rock in ditch. Start hauling rock to cover the GEO. Work on Viper pad. |

| CONTRACTOR REMARKS  |
|---|
| Waiting on permits for 105 pond. Considerable frost in WRF new ditch. |

| PROJECT QUANTITIES |
|--------------------|
|--------------------|

| Waste Rock Facility Expansion Perimeter Ditch |              |                                     |                |              |                                     |
|---|--------------|-------------------------------------|----------------|--------------|-------------------------------------|
| Station Number                                | Ditch Status | Comments                            | Station Number | Ditch Status | Comments                            |
| 0+438 - 0+450                                 | 80%          | Ditch bottom to grade/shaped slopes | 0+775 - 0+800  | 80%          | Ditch bottom to grade/shaped slopes |
| 0+450 - 0+475                                 | 80%          | Ditch bottom to grade/shaped slopes | 0+800 - 0+825  | 80%          | Ditch bottom to grade/shaped slopes |
| 0+475 - 0+500                                 | 80%          | Ditch bottom to grade/shaped slopes | 0+825 - 0+850  | 80%          | Ditch bottom to grade/shaped slopes |
| 0+500 - 0+525                                 | 80%          | Ditch bottom to grade/shaped slopes | 0+850 - 0+875  | 80%          | Ditch bottom to grade/shaped slopes |
| 0+525 - 0+550                                 | 80%          | Ditch bottom to grade/shaped slopes | 0+875 - 0+900  | 80%          | Ditch bottom to grade/shaped slopes |
| 0+550 - 0+575                                 | 80%          | Ditch bottom to grade/shaped slopes | 0+900 - 0+925  | 80%          | Ditch bottom to grade/shaped slopes |
| 0+575 - 0+600                                 | 80%          | Ditch bottom to grade/shaped slopes | 0+925 - 0+950  | 80%          | Ditch bottom to grade/shaped slopes |
| 0+600 - 0+625                                 | 80%          | Ditch bottom to grade/shaped slopes | 0+950 - 0+975  | 80%          | Ditch bottom to grade/shaped slopes |
| 0+625 - 0+650                                 | 80%          | Ditch bottom to grade/shaped slopes | 0+975 - 1+000  | 80%          | Ditch bottom to grade/shaped slopes |
| 0+650 - 0+675                                 | 80%          | Ditch bottom to grade/shaped slopes | 1+000 - 1+025  | 30%          | Dug to frozen bottom                |
| 0+675 - 0+700                                 | 80%          | Ditch bottom to grade/shaped slopes | 1+025 - 1+050  | 30%          | Dug to frozen bottom                |
| 0+700 - 0+725                                 | 80%          | Ditch bottom to grade/shaped slopes | 1+050 - 1+075  | 30%          | Dug to frozen bottom                |
| 0+725 - 0+750                                 | 80%          | Ditch bottom to grade/shaped slopes | 1+075 - 1+081  | 30%          | Dug to frozen bottom                |
| 0+750 - 0+775                                 | 80%          | Ditch bottom to grade/shaped slopes |                |              |                                     |
|   |              | VIPER PAD                           |                |              |                                     |
|   |              | Started on subgrade Excavation      |                |              |                                     |

| MANPOWER DEMOGRAPHICS |                        |                  |       |
|-----------------------|------------------------|------------------|-------|
| COMPANY               | POSITION               | HOURS            | COUNT |
| Nuna East             | Julian Sobkow          | Foreman          | 12.0  |
| Nuna East             | Pierre-Luc Barrault    | Multi Operator   | 0.0   |
| Nuna East             | Carroll Haddad         | Multi Operator   | 12.0  |
| Nuna East             | Aaron Weber            | Multi Operator   | 12.0  |
| Nuna East             | Brian Brown            | Truck Driver     | 12.0  |
| Nuna East             | Jonathan Noel-Chisson  | Truck Driver     | 12.0  |
| Nuna East             | Vincent Haddad         | Truck Driver     | 12.0  |
| Nuna East             | Kevon Lavigne-Rousseau | Skilled Labourer | 12.0  |
| Nuna East             | Cody McKay             | Skilled Labourer | 12.0  |
| Nuna East             | Harvey Blouin          | Supervisor       | 12.0  |
| TOTAL                 |                        | 108              | 9     |

| EQUIPMENT ONSITE   |        |        |        |
|--------------------|--------|--------|--------|
| Description        | Unit   | Op Hrs | Status |
| Cat 349 Excavator  | 326028 | 6.0    | Up     |
| Cat 336 Excavator  | 326013 | 11.0   | Up     |
| Cat 980 Loader     | 326806 | 4.0    | Up     |
| Cat D6 Dozer       | 327307 | 8.5    | Up     |
| Cat Compactor      | 327901 | 0.0    | Up     |
| Cat D8 Dozer       | 327306 | 2.0    | Up     |
| Cat 745 Rock Truck | 325803 | 0.0    | Up     |
| Cat 745 Rock Truck | 325819 | 0.0    | Up     |

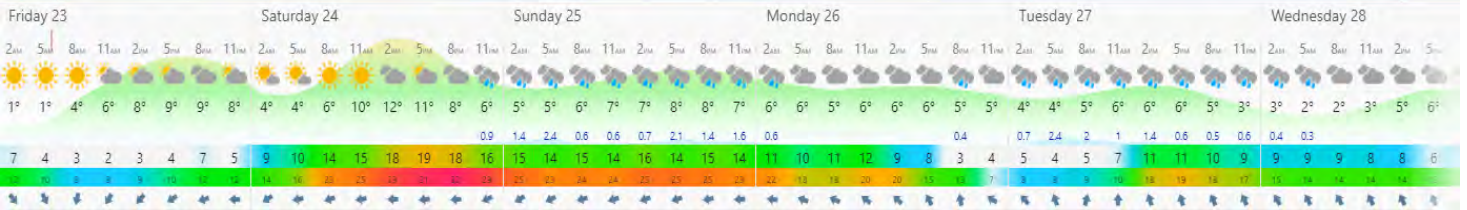
| PROJECT PHOTOS |
|----------------|
|                |



Date: Thursday, July 22, 2021

Working Hours: 6:00am to 6:00pm

Job No: CC006



| PROJECT SAFETY  | First Aid | Medical Aid | Property Damage | Equipment Damage | Environmental Release | Fire | Vehicle / Equipment Incident (Moving) | Project Total | Near Misses | Hazard ID Cards |
|-----------------|-----------|-------------|-----------------|------------------|-----------------------|------|---------------------------------------|---------------|-------------|-----------------|
| Project to Date | 0         | 0           | 0               | 0                | 0                     | 0    | 0                                     | 0             | 0           | 0               |

| DESCRIPTION OF INCIDENTS                 |                        |
|--|------------------------|
| Shift                                    | Toolbox Topic          |
| Days                                     | When is a JHA required |
| TOTAL REPORTABLE ACCIDENT FREQUENCY RATE | 0                      |
| LOST TIME ACCIDENT FREQUENCY RATE        | 0                      |

| DAILY ACTIVITIES COMPLETED   |  |
|--|--|
| Worked on WRF ditch. Excavate Viper Pad to subgrade and start to place 6 inch. |  |

| PLANNED ACTIVITIES FOR NEXT DAY   |  |
|---|--|
| Keep working on WRF ditch. Placing GEO Textile and rock in ditch. Continue work on Viper Pad. |  |

| CONTRACTOR REMARKS  |  |
|---|--|
| Waiting on permits for 105 pond. Considerable frost in WRF new ditch. |  |

| PROJECT QUANTITIES |  |
|--------------------|--|
|--------------------|--|

| Waste Rock Facility Expansion Perimeter Ditch |              |                                       |                |              |                                     |
|---|--------------|---------------------------------------|----------------|--------------|-------------------------------------|
| Station Number                                | Ditch Status | Comments                              | Station Number | Ditch Status | Comments                            |
| 0+438 - 0+450                                 | 100%         | GEO textile and rock placed to grade. | 0+775 - 0+800  | 80%          | Ditch bottom to grade/shaped slopes |
| 0+450 - 0+475                                 | 100%         | GEO textile and rock placed to grade. | 0+800 - 0+825  | 80%          | Ditch bottom to grade/shaped slopes |
| 0+475 - 0+500                                 | 100%         | GEO textile and rock placed to grade. | 0+825 - 0+850  | 80%          | Ditch bottom to grade/shaped slopes |
| 0+500 - 0+525                                 | 100%         | GEO textile and rock placed to grade. | 0+850 - 0+875  | 80%          | Ditch bottom to grade/shaped slopes |
| 0+525 - 0+550                                 | 80%          | Ditch bottom to grade/shaped slopes   | 0+875 - 0+900  | 80%          | Ditch bottom to grade/shaped slopes |
| 0+550 - 0+575                                 | 80%          | Ditch bottom to grade/shaped slopes   | 0+900 - 0+925  | 80%          | Ditch bottom to grade/shaped slopes |
| 0+575 - 0+600                                 | 80%          | Ditch bottom to grade/shaped slopes   | 0+925 - 0+950  | 80%          | Ditch bottom to grade/shaped slopes |
| 0+600 - 0+625                                 | 80%          | Ditch bottom to grade/shaped slopes   | 0+950 - 0+975  | 80%          | Ditch bottom to grade/shaped slopes |
| 0+625 - 0+650                                 | 80%          | Ditch bottom to grade/shaped slopes   | 0+975 - 1+000  | 80%          | Ditch bottom to grade/shaped slopes |
| 0+650 - 0+675                                 | 80%          | Ditch bottom to grade/shaped slopes   | 1+000 - 1+025  | 30%          | Dug to frozen bottom                |
| 0+675 - 0+700                                 | 80%          | Ditch bottom to grade/shaped slopes   | 1+025 - 1+050  | 30%          | Dug to frozen bottom                |
| 0+700 - 0+725                                 | 80%          | Ditch bottom to grade/shaped slopes   | 1+050 - 1+075  | 30%          | Dug to frozen bottom                |
| 0+725 - 0+750                                 | 80%          | Ditch bottom to grade/shaped slopes   | 1+075 - 1+081  | 30%          | Dug to frozen bottom                |
| 0+750 - 0+775                                 | 80%          |                                       |                |              |                                     |
|   |              | VIPER PAD                             |                |              |                                     |
|   |              | Started on subgrade Excavation        |                | 80%          |                                     |
|   |              | Placing 6 inch                        |                | 80%          |                                     |

| MANPOWER DEMOGRAPHICS |                        |       |       |
|-----------------------|------------------------|-------|-------|
| COMPANY               | POSITION               | HOURS | COUNT |
| Nuna East             | Julian Soblime         | 12.0  | 1     |
| Nuna East             | Brian Brown            | 12.0  | 1     |
| Nuna East             | Carroll Infielder      | 12.0  | 1     |
| Nuna East             | Aaron Weber            | 12.0  | 1     |
| Nuna East             | Jonathan Noel-Chasson  | 12.0  | 1     |
| Nuna East             | Pierre-Luc Barriault   | 12.0  | 1     |
| Nuna East             | Ginochet Hadden        | 12.0  | 1     |
| Nuna East             | Kevyn Lavigne-Bousquet | 12.0  | 1     |
| Nuna East             | Cody McKay             | 12.0  | 1     |
| Nuna East             | Harvey Blouin          | 12.0  | 1     |
| TOTAL                 |                        | 121   | 10    |

| EQUIPMENT ONSITE   |        |        |        |
|--------------------|--------|--------|--------|
| Description        | Unit   | Op Hrs | Status |
| Cat 349 Excavator  | 320508 | 10.0   | Up     |
| Cat 336 Excavator  | 320513 | 10.5   | Up     |
| Cat 95 Dozer       | 320807 | 5.0    | Up     |
| Cat 95 Dozer       | 327306 | 9.0    | Up     |
| Cat 980 Loader     | 320806 | 7.0    | Up     |
| Cat C568           | 327901 | 2.0    | Up     |
| Cat 745 Rock Truck | 320803 | 7.0    | Up     |
| Cat 745 Rock Truck | 320819 | 7.0    | Up     |



Date: Thursday, July 22, 2021

Working Hours: 6:00am to 6:00am

Job No: CC006

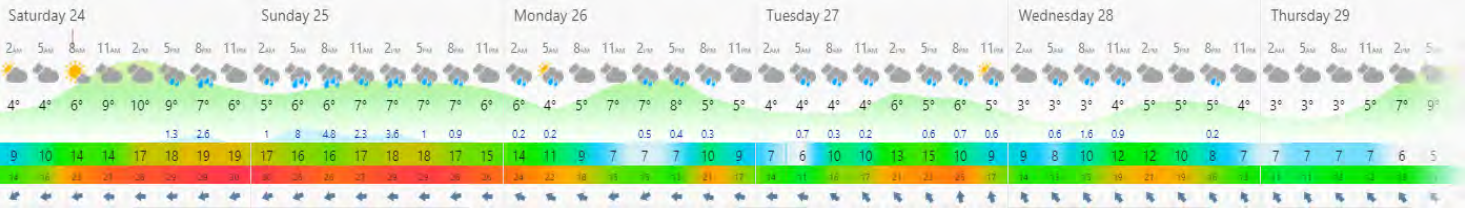




Date: Friday, July 23, 2021

Working Hours: 6:00am to 6:00pm

Job No: CC006



| PROJECT SAFETY  | First Aid | Medical Aid | Property Damage | Equipment Damage | Environmental Release | Fire | Vehicle / Equipment Incident (Moving) | Project Total | Near Misses | Hazard ID Cards |
|-----------------|-----------|-------------|-----------------|------------------|-----------------------|------|---------------------------------------|---------------|-------------|-----------------|
| Project to Date | 0         | 0           | 0               | 0                | 0                     | 0    | 0                                     | 0             | 0           | 0               |

| DESCRIPTION OF INCIDENTS                    |
|---|
| Shift: Toolbox Topic                        |
| Days: Site driving                          |
| TOTAL REPORTABLE ACCIDENT FREQUENCY RATE: 0 |
| LOST TIME ACCIDENT FREQUENCY RATE: 0        |

| DAILY ACTIVITIES COMPLETED  |
|---|
| Worked on WRF ditch putting GEO down and covering with 6 inch. Finished placing and compacting 6 inch, started placing and compacting 3/4 on the Viper Pad. |

| PLANNED ACTIVITIES FOR NEXT DAY  |
|--|
| Keep working on WRF ditch. Placing GEO Textile and rock in ditch. Continue work on Viper Pad. Will work on the assembly pad. |

| CONTRACTOR REMARKS  |
|---|
| Waiting on permits for 105 pond. Considerable frost in WRF new ditch. |

| Station Number | Ditch Status | Comments                              | Station Number | Ditch Status | Comments                            |
|----------------|--------------|---------------------------------------|----------------|--------------|-------------------------------------|
| 0+438 - 0+450  | 100%         | GEO textile and rock placed to grade. | 0+775 - 0+800  | 80%          | Ditch bottom to grade/shaped slopes |
| 0+450 - 0+475  | 100%         | GEO textile and rock placed to grade. | 0+800 - 0+825  | 80%          | Ditch bottom to grade/shaped slopes |
| 0+475 - 0+500  | 100%         | GEO textile and rock placed to grade. | 0+825 - 0+850  | 80%          | Ditch bottom to grade/shaped slopes |
| 0+500 - 0+525  | 100%         | GEO textile and rock placed to grade. | 0+850 - 0+875  | 80%          | Ditch bottom to grade/shaped slopes |
| 0+525 - 0+550  | 100%         | Ditch bottom to grade/shaped slopes   | 0+875 - 0+900  | 80%          | Ditch bottom to grade/shaped slopes |
| 0+550 - 0+575  | 100%         | Ditch bottom to grade/shaped slopes   | 0+900 - 0+925  | 80%          | Ditch bottom to grade/shaped slopes |
| 0+575 - 0+600  | 100%         | Ditch bottom to grade/shaped slopes   | 0+925 - 0+950  | 80%          | Ditch bottom to grade/shaped slopes |
| 0+600 - 0+625  | 80%          | Ditch bottom to grade/shaped slopes   | 0+950 - 0+975  | 80%          | Ditch bottom to grade/shaped slopes |
| 0+625 - 0+650  | 80%          | Ditch bottom to grade/shaped slopes   | 0+975 - 1+000  | 80%          | Ditch bottom to grade/shaped slopes |
| 0+650 - 0+675  | 80%          | Ditch bottom to grade/shaped slopes   | 1+000 - 1+025  | 30%          | Dug to frozen bottom                |
| 0+675 - 0+700  | 80%          | Ditch bottom to grade/shaped slopes   | 1+025 - 1+050  | 30%          | Dug to frozen bottom                |
| 0+700 - 0+725  | 80%          | Ditch bottom to grade/shaped slopes   | 1+050 - 1+075  | 30%          | Dug to frozen bottom                |
| 0+725 - 0+750  | 80%          | Ditch bottom to grade/shaped slopes   | 1+075 - 1+081  | 30%          | Dug to frozen bottom                |
| 0+750 - 0+775  | 80%          |                                       |                |              |                                     |
|                |              | <b>VIPER PAD</b>                      |                |              |                                     |
|                |              | Started on subgrade Excavation        |                | 100%         |                                     |
|                |              | Placing and Packing 6 inch            |                | 100%         |                                     |
|                |              | Placing and Packing 3/4               |                | 80%          |                                     |

| COMPANY      | POSITION                | HOURS            | COUNT     |
|--------------|-------------------------|------------------|-----------|
| Nuna East    | Julian Soltine          | Foreman          | 12.0      |
| Nuna East    | Brian Brown             | Truck Driver     | 12.0      |
| Nuna East    | Carroll Inadler         | Multi Operator   | 12.0      |
| Nuna East    | Aaron Weber             | Multi Operator   | 12.0      |
| Nuna East    | Jonathan Neel-Chasson   | Multi Operator   | 12.0      |
| Nuna East    | Pierre-Luc Barriault    | Truck Driver     | 12.0      |
| Nuna East    | Ginochet Hadden         | Truck Driver     | 12.0      |
| Nuna East    | Kevon Lavigne-Brousseau | Skilled Labourer | 12.0      |
| Nuna East    | Cody McKay              | Skilled Labourer | 12.0      |
| Nuna East    | Harvey Blouin           | Supervisor       | 12.0      |
| <b>TOTAL</b> |                         | <b>121</b>       | <b>10</b> |

| DESCRIPTION        | Unit   | Op Hrs | Status | Comments |
|--------------------|--------|--------|--------|----------|
| Cat 349 Excavator  | 326028 | 3.0    | Up     |          |
| Cat 336 Excavator  | 326033 | 10.5   | Up     |          |
| Cat D6 Dozer       | 326807 | 10.5   | Up     |          |
| Cat D8 Dozer       | 327306 | 9.0    | Up     |          |
| Cat 880 Loader     | 326806 | 10.0   | Up     |          |
| Cat C568           | 327901 | 2.0    | Up     |          |
| Cat 745 Rock Truck | 325803 | 10.0   | Up     |          |
| Cat 745 Rock Truck | 325819 | 10.0   | Up     |          |



Date: Friday, July 23, 2021

Working Hours: 6:00am to 6:00am

Job No: CC006



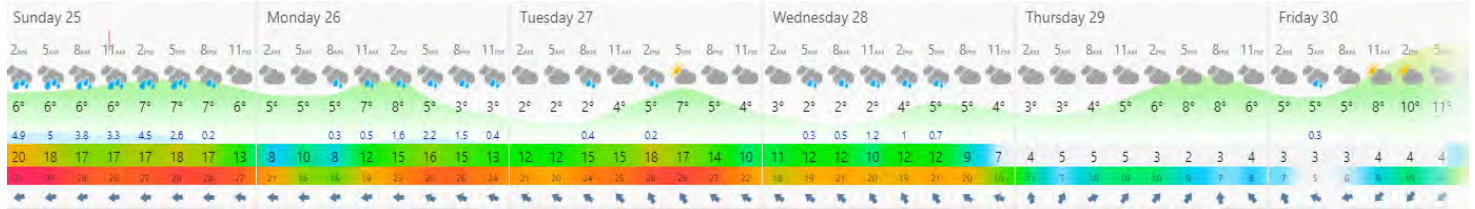




Date: Saturday, July 24, 2021

Working Hours: 6:00am to 6:00am

Job No: CC006



| PROJECT SAFETY  | First Aid | Medical Aid | Property Damage | Equipment Damage | Environmental Release | Fire | Vehicle / Equipment Incident (Moving) | Project Total | Near Misses | Hazard ID Cards |
|-----------------|-----------|-------------|-----------------|------------------|-----------------------|------|---------------------------------------|---------------|-------------|-----------------|
| Project to Date | 0         | 0           | 0               | 0                | 0                     | 0    | 0                                     | 0             | 0           | 0               |

| DESCRIPTION OF INCIDENTS |                                |
|--------------------------|--------------------------------|
| Shift                    | Toolbox Topic                  |
| Days                     | Would you please not flush it. |

|  |   |
|--|---|
| TOTAL REPORTABLE ACCIDENT FREQUENCY RATE | 0 |
| LOST TIME ACCIDENT FREQUENCY RATE        | 0 |

**DAILY ACTIVITIES COMPLETED**

|  |  |
|--|--|
| Worked on WRF ditch putting GEO down and covering with 6 inch. Placing 3/4 on Viper pad. |  |
|  |  |

**PLANNED ACTIVITIES FOR NEXT DAY**

|   |  |
|---|--|
| Keep working on WRF ditch. Placing GEO Textile and rock in ditch. Will work on the assembly pad. Start excavating East ditch. |  |
|   |  |

**CONTRACTOR REMARKS**

|   |  |
|---|--|
| Waiting on permits for 10S pond. Considerable frost in WRF new ditch. Waiting for Insulation for under slab at Viper Pad. |  |
|   |  |

|                  |   |   |
|------------------|---|---|
| PROJECT PROGRESS | □ | □ |
|------------------|---|---|

| Waste Rock Facility Expansion Perimeter Ditch |              |                                       |                |              |                                     |
|---|--------------|---------------------------------------|----------------|--------------|-------------------------------------|
| Station Number                                | Ditch Status | Comments                              | Station Number | Ditch Status | Comments                            |
| 0+438 - 0+450                                 | 100%         | GEO textile and rock placed to grade. | 0+775 - 0+800  | 80%          | Ditch bottom to grade/shaped slopes |
| 0+450 - 0+475                                 | 100%         | GEO textile and rock placed to grade. | 0+800 - 0+825  | 80%          | Ditch bottom to grade/shaped slopes |
| 0+475 - 0+500                                 | 100%         | GEO textile and rock placed to grade. | 0+825 - 0+850  | 80%          | Ditch bottom to grade/shaped slopes |
| 0+500 - 0+525                                 | 100%         | GEO textile and rock placed to grade. | 0+850 - 0+875  | 80%          | Ditch bottom to grade/shaped slopes |
| 0+525 - 0+550                                 | 100%         | Ditch bottom to grade/shaped slopes   | 0+875 - 0+900  | 80%          | Ditch bottom to grade/shaped slopes |
| 0+550 - 0+575                                 | 100%         | Ditch bottom to grade/shaped slopes   | 0+900 - 0+925  | 80%          | Ditch bottom to grade/shaped slopes |
| 0+575 - 0+600                                 | 100%         | Ditch bottom to grade/shaped slopes   | 0+925 - 0+950  | 80%          | Ditch bottom to grade/shaped slopes |
| 0+600 - 0+625                                 | 100%         | Ditch bottom to grade/shaped slopes   | 0+950 - 0+975  | 80%          | Ditch bottom to grade/shaped slopes |
| 0+625 - 0+650                                 | 100%         | Ditch bottom to grade/shaped slopes   | 0+975 - 1+000  | 80%          | Ditch bottom to grade/shaped slopes |
| 0+650 - 0+675                                 | 80%          | Ditch bottom to grade/shaped slopes   | 1+000 - 1+025  | 80%          | Ditch bottom to grade/shaped slopes |
| 0+675 - 0+700                                 | 80%          | Ditch bottom to grade/shaped slopes   | 1+025 - 1+050  | 30%          | Dug to frozen bottom                |
| 0+700 - 0+725                                 | 80%          | Ditch bottom to grade/shaped slopes   | 1+050 - 1+075  | 30%          | Dug to frozen bottom                |
| 0+725 - 0+750                                 | 80%          | Ditch bottom to grade/shaped slopes   | 1+075 - 1+081  | 30%          | Dug to frozen bottom                |
| 0+750 - 0+775                                 | 80%          |                                       |                |              |                                     |
| <b>VIPER PAD</b>                              |              |                                       |                |              |                                     |
|   |              | Started on subgrade Excavation        |                | 100%         |                                     |
|   |              | Placing and Packing 6 inch            |                | 100%         |                                     |
|   |              | Placing and Packing 3/4               |                | 80%          |                                     |

**MANPOWER DEMOGRAPHICS**

| COMPANY      | POSITION               | HOURS      | COUNT     |
|--------------|------------------------|------------|-----------|
| Nuna East    | Julian Sobkow          | 12.0       | 1         |
| Nuna East    | Brian Brown            | 12.0       | 1         |
| Nuna East    | Cordell Hodder         | 12.0       | 1         |
| Nuna East    | Jonathan Noel-Chiasson | 12.0       | 1         |
| Nuna East    | Pierre-Luc Barriault   | 12.0       | 1         |
| Nuna East    | Vincent Hodder         | 12.0       | 1         |
| Nuna East    | Kevin Lavoie-Rousseau  | 12.0       | 1         |
| Nuna East    | Cody McKav             | 12.0       | 1         |
| Nuna East    | Harvey Blouin          | 13.0       | 1         |
| <b>TOTAL</b> |                        | <b>121</b> | <b>10</b> |

**EQUIPMENT ONSITE**

| Description        | Unit   | Op Hrs | Status | Comments |
|--------------------|--------|--------|--------|----------|
| Cat 349 Excavator  | 326508 | 1.0    | Up     |          |
| Cat 336 Excavator  | 326513 | 10.5   | Up     |          |
| Cat D6 Dozer       | 326807 | 10.5   | Up     |          |
| Cat D8 Dozer       | 327306 | 0.0    | Up     |          |
| Cat 980 Loader     | 326806 | 10.0   | Up     |          |
| Cat CS56B          | 327901 | 4.0    | Up     |          |
| Cat 745 Rock Truck | 325803 | 10.0   | Up     |          |
| Cat 745 Rock Truck | 325819 | 10.0   | Up     |          |

**PROJECT QUANTITIES**

|                         | Estimated Quantities                 | Quantity | Unit | Quantity to date | Daily Total | Total | % Complete |
|-------------------------|--------------------------------------|----------|------|------------------|-------------|-------|------------|
| 110KM HD Equipment Shop | Excavation                           | 0        | m3   | 0                | 0           | 0     | 0%         |
|                         | LHP 6" to Building Perimeter         | 725      | m3   | 0                | 0           | 0     | 0%         |
|                         | LHP Surfacing to Building Perimeter  | 290      | m3   | 0                | 0           | 0     | 0%         |
|                         | Place 6" crush to underside of Slab  | 575      | m3   | 416              | 0           | 416   | 72%        |
|                         | LHP Crush to underside of Slab       | 518      | m3   | 261              | 0           | 261   | 50%        |
|                         | Install Insulation                   | 2,300    | m2   | 0                | 0           | 0     | 0%         |
|                         | <b>Grand Total</b>                   |          |      | 0                | 0           | 677   |            |
| WRF Expansion           | Excavation                           | 6,750    | m3   | 0                | 0           | 0     | 0%         |
|                         | Install Geotextile                   | 9,750    | m2   | 1696             | 0           | 1696  | 17%        |
|                         | LHP Rip Rap                          | 2,790    | m3   | 420              | 0           | 420   | 15%        |
|                         | <b>Grand Total</b>                   |          |      | 0                | 0           | 2116  |            |
| HD Truck Shop           | Excavation                           | 0        | m3   | 0                | 0           | 0     | 0%         |
|                         | LHP -ROQ General Fill                | 1,600    | m3   | 0                | 0           | 0     | 0%         |
|                         | LHP 6" Transition Material           | 1,200    | m3   | 0                | 0           | 0     | 0%         |
|                         | LHP 3/4" Crush                       | 720      | m3   | 0                | 0           | 0     | 0%         |
|                         | Install Insulation                   | 1,500    | m2   | 0                | 0           | 0     | 0%         |
|                         | <b>Grand Total</b>                   |          |      | 0                | 0           | 0     |            |
| KM 10S Pond             | Site Prep                            | 1        | LS   | 0                | 0           | 0     | 0%         |
|                         | LHP -ROQ                             | 180,000  | m3   | 0                | 0           | 0     | 0%         |
|                         | LHP 6" Transition Material           | 60,000   | m3   | 0                | 0           | 0     | 0%         |
|                         | LHP Crush                            | 60,000   | m3   | 0                | 0           | 0     | 0%         |
|                         | Liner Installation                   | 1        | LS   | 0                | 0           | 0     | 0%         |
|                         | <b>Grand Total</b>                   |          |      | 0                | 0           | 0     |            |
| Port Warehouse          | Excavation                           | 260      | m3   | 0                | 0           | 0     | 0%         |
|                         | LHP 3/4" Crush to final design lines | 1,250    | m3   | 0                | 0           | 0     | 0%         |
|                         | Install Insulation                   | 1,638    | m2   | 0                | 0           | 0     | 0%         |
|                         | <b>Grand Total</b>                   |          |      | 0                | 0           | 0     |            |

Date: Saturday, July 24, 2021

Working Hours: 6:00am to 6:00am

Job No: CC006

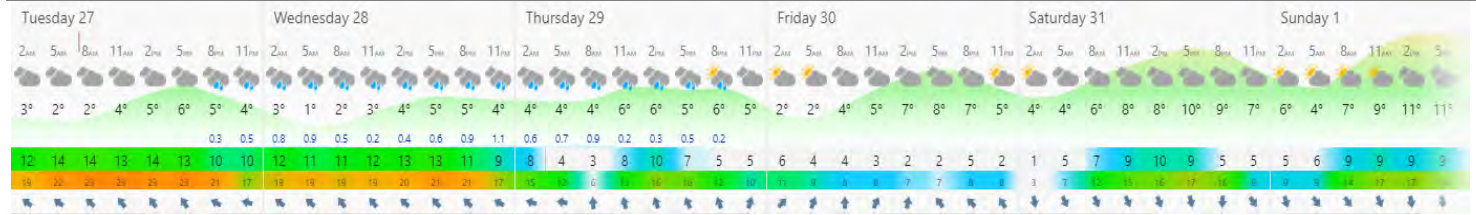
PROJECT PHOTOS



Date: Monday, July 26, 2021

Working Hours: 6:00am to 6:00am

Job No: CC006



| PROJECT SAFETY  | First Aid | Medical Aid | Property Damage | Equipment Damage | Environmental Release | Fire | Vehicle / Equipment Incident (Moving) | Project Total | Near Misses | Hazard ID Cards |
|-----------------|-----------|-------------|-----------------|------------------|-----------------------|------|---------------------------------------|---------------|-------------|-----------------|
| Project to Date | 0         | 0           | 0               | 0                | 0                     | 0    | 0                                     | 0             | 0           | 7               |

| DESCRIPTION OF INCIDENTS |                            |
|--------------------------|----------------------------|
| Shift                    | Toolbox Topic              |
| Days                     | Accommodations Fire Safety |

|  |   |
|--|---|
| TOTAL REPORTABLE ACCIDENT FREQUENCY RATE | 0 |
| LOST TIME ACCIDENT FREQUENCY RATE        | 0 |

| DAILY ACTIVITIES COMPLETED   |
|--|
| Worked on WRF ditch putting GEO down and covering with 6 inch. The 349 and the 980 are down and we have asked for the 374 to be floated up but did not happen. |

| PLANNED ACTIVITIES FOR NEXT DAY  |
|--|
| Keep working on WRF ditch. Placing GEO Textile and rock in ditch. Start excavating East ditch if the equipment is back up and running. |

| CONTRACTOR REMARKS  |
|---|
| Waiting on permits for 105 pond. Considerable frost in WRF new ditch. Waiting for insulation for under slab at Viper Pad. Two critical machines down 349 and 980. High wind really slowed the guys down laying the GEO out yesterday. Very high winds yesterday, raining and heavy fog. Waiting on mine Operations to build road beside east ditch. The 374 didn't get floated up the mountain yet. |

| PROJECT PROGRESS | □ □ |
|------------------|-----|
|------------------|-----|

| Waste Rock Facility Expansion Perimeter Ditch |              |                                       |                |              |                                     |
|---|--------------|---------------------------------------|----------------|--------------|-------------------------------------|
| Station Number                                | Ditch Status | Comments                              | Station Number | Ditch Status | Comments                            |
| 0+438 - 0+450                                 | 100%         | GEO textile and rock placed to grade. | 0+775 - 0+800  | 100%         | Ditch bottom to grade/shaped slopes |
| 0+450 - 0+475                                 | 100%         | GEO textile and rock placed to grade. | 0+800 - 0+825  | 100%         | Ditch bottom to grade/shaped slopes |
| 0+475 - 0+500                                 | 100%         | GEO textile and rock placed to grade. | 0+825 - 0+850  | 100%         | Ditch bottom to grade/shaped slopes |
| 0+500 - 0+525                                 | 100%         | GEO textile and rock placed to grade. | 0+850 - 0+875  | 80%          | Ditch bottom to grade/shaped slopes |
| 0+525 - 0+550                                 | 100%         | Ditch bottom to grade/shaped slopes   | 0+875 - 0+900  | 80%          | Ditch bottom to grade/shaped slopes |
| 0+550 - 0+575                                 | 100%         | Ditch bottom to grade/shaped slopes   | 0+900 - 0+925  | 80%          | Ditch bottom to grade/shaped slopes |
| 0+575 - 0+600                                 | 100%         | Ditch bottom to grade/shaped slopes   | 0+925 - 0+950  | 80%          | Ditch bottom to grade/shaped slopes |
| 0+600 - 0+625                                 | 100%         | Ditch bottom to grade/shaped slopes   | 0+950 - 0+975  | 80%          | Ditch bottom to grade/shaped slopes |
| 0+625 - 0+650                                 | 100%         | Ditch bottom to grade/shaped slopes   | 0+975 - 1+000  | 80%          | Ditch bottom to grade/shaped slopes |
| 0+650 - 0+675                                 | 100%         | Ditch bottom to grade/shaped slopes   | 1+000 - 1+025  | 80%          | Ditch bottom to grade/shaped slopes |
| 0+675 - 0+700                                 | 100%         | Ditch bottom to grade/shaped slopes   | 1+025 - 1+050  | 30%          | Dug to frozen bottom                |
| 0+700 - 0+725                                 | 100%         | Ditch bottom to grade/shaped slopes   | 1+050 - 1+075  | 30%          | Dug to frozen bottom                |
| 0+725 - 0+750                                 | 100%         | Ditch bottom to grade/shaped slopes   | 1+075 - 1+081  | 30%          | Dug to frozen bottom                |
| 0+750 - 0+775                                 | 100%         | Ditch bottom to grade/shaped slopes   |                |              |                                     |
| VIPER PAD                                     |              |                                       |                |              |                                     |
|   |              | Subgrade Excavation                   |                | 100%         |                                     |
|   |              | Placing and Packing 6 inch            |                | 100%         |                                     |
|   |              | Placing and Packing 3/4               |                | 80%          |                                     |

| MANPOWER DEMOGRAPHICS |                        |            |       |
|-----------------------|------------------------|------------|-------|
| COMPANY               | POSITION               | HOURS      | COUNT |
| Nuna East             | Julian Sobkow          | 12.0       | 1     |
| Nuna East             | Brian Brown            | 12.0       | 1     |
| Nuna East             | Cordell Hodder         | Multi      | 12.0  |
| Nuna East             | Aaron Weber            | Multi      | 12.0  |
| Nuna East             | Jonathan Noel-Chiasson | Multi      | 12.0  |
| Nuna East             | Pierre-Luc Barriault   | 12.0       | 1     |
| Nuna East             | Vincent Hodder         | Truck      | 12.0  |
| Nuna East             | Keven Lavigne-Rousseau | Skilled    | 12.0  |
| Nuna East             | Cody McKav             | Skilled    | 12.0  |
| Nuna East             |                        |            |       |
| Nuna East             | Harvey Blouin          | Supervisor | 13.0  |
| TOTAL                 |                        | 121        | 10    |

| EQUIPMENT ONSITE   |        |        |        |                                      |
|--------------------|--------|--------|--------|--------------------------------------|
| Description        | Unit   | Op Hrs | Status | Comments                             |
| Cat 336 Excavator  | 326508 | 10.5   | UP     |                                      |
| Cat 349 Excavator  | 326513 | 0.0    | Down   | Track pin broke and tack is off.     |
| Cat 374 Excavator  | 326503 | 0.0    | UP     | Waiting to get it moved up the hill. |
| Cat D6 Dozer       | 326807 | 0.0    | Up     |                                      |
| Cat D8 Dozer       | 327306 | 4.0    | Up     |                                      |
| Cat 980 Loader     | 326806 | 0.0    | Down   | Hose leakage                         |
| Cat CS56B          | 327901 | 0.0    | Up     |                                      |
| Cat 745 Rock Truck | 325803 | 5.0    | Up     |                                      |
| Cat 745 Rock Truck | 325819 | 5.0    | Up     |                                      |

| PROJECT QUANTITIES      |                                      |          |      |                  |             |       |            |
|-------------------------|--------------------------------------|----------|------|------------------|-------------|-------|------------|
| 110KM HD Equipment Shop | Estimated Quantities                 | Quantity | Unit | Quantity to date | Daily Total | Total | % Complete |
|                         | Excavation                           | 0        | m3   | 0                | 0           | 0     |            |
|                         | LHP 6" to Building Perimeter         | 725      | m3   | 0                | 0           | 0     | 0%         |
|                         | LHP Surfacing to Building Perimeter  | 290      | m3   | 0                | 0           | 0     | 0%         |
|                         | Place 6" crush to underside of Slab  | 575      | m3   | 416              | 0           | 416   | 72%        |
|                         | LHP Crush to underside of Slab       | 518      | m3   | 261              | 0           | 261   | 50%        |
|                         | Install Insulation                   | 2,300    | m2   | 0                | 0           | 0     | 0%         |
| Grand Total             |                                      |          |      | 0                | 0           | 677   |            |
| WRF Expansion           | Estimated Quantities                 | Quantity | Unit | Quantity to date | Daily Total | Total | % Complete |
|                         | Excavation                           | 6,750    | m3   | 0                | 0           | 0     | 0%         |
|                         | Install Geotextile                   | 9,750    | m2   | 1696             | 1035        | 2731  | 28%        |
|                         | LHP Rip Rap                          | 2,790    | m3   | 420              | 150         | 570   | 20%        |
| Grand Total             |                                      |          |      | 1185             |             | 3301  |            |
| HD Truck Shop           | Estimated Quantities                 | Quantity | Unit | Quantity to date | Daily Total | Total | % Complete |
|                         | Excavation                           | 0        | m3   | 0                | 0           | 0     |            |
|                         | LHP -ROQ General Fill                | 1,600    | m3   | 0                | 0           | 0     | 0%         |
|                         | LHP 6" Transition Material           | 1,200    | m3   | 0                | 0           | 0     | 0%         |
|                         | LHP 3/4" Crush                       | 720      | m3   | 0                | 0           | 0     | 0%         |
|                         | Install Insulation                   | 1,500    | m2   | 0                | 0           | 0     | 0%         |
|                         | Grand Total                          |          |      | 0                | 0           | 0     |            |
| KM 105 Pond             | Estimated Quantities                 | Quantity | Unit | Quantity to date | Daily Total | Total | % Complete |
|                         | Site Prep                            | 1        | LS   | 0                | 0           | 0     |            |
|                         | LHP -ROQ                             | 180,000  | m3   | 0                | 0           | 0     | 0%         |
|                         | LHP 6" Transition Material           | 60,000   | m3   | 0                | 0           | 0     | 0%         |
|                         | LHP Crush                            | 60,000   | m3   | 0                | 0           | 0     | 0%         |
|                         | Liner Installation                   | 1        | LS   | 0                | 0           | 0     | 0%         |
|                         | Grand Total                          |          |      | 0                | 0           | 0     |            |
| Port Warehouse          | Estimated Quantities                 | Quantity | Unit | Quantity to date | Daily Total | Total | % Complete |
|                         | LHP 6" Crush to final design lines   | 260      | m3   | 0                | 0           | 0     | 0%         |
|                         | LHP 3/4" Crush to final design lines | 1,250    | m3   | 0                | 0           | 0     | 0%         |
|                         | Install Insulation                   | 1,638    | m2   | 0                | 0           | 0     | 0%         |
|                         | Grand Total                          |          |      | 0                | 0           | 0     |            |

Date: Monday, July 26, 2021

Working Hours: 6:00am to 6:00am

Job No: CC006

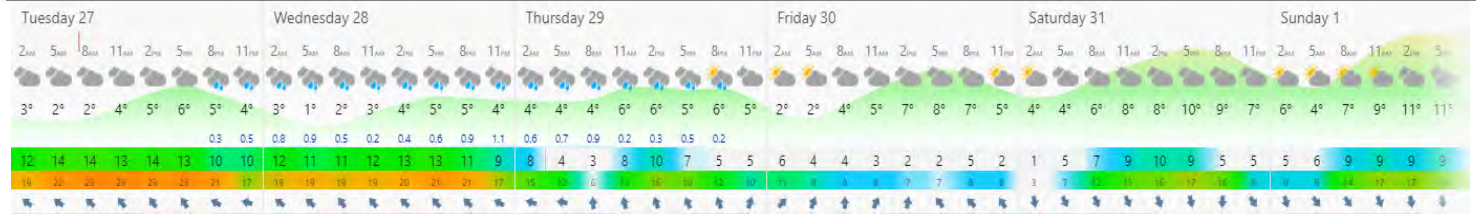
PROJECT PHOTOS



Date: Tuesday, July 27, 2021

Working Hours: 6:00am to 6:00am

Job No: CC006



| PROJECT SAFETY  | First Aid | Medical Aid | Property Damage | Equipment Damage | Environmental Release | Fire | Vehicle / Equipment Incident (Moving) | Project Total | Near Misses | Hazard ID Cards |
|-----------------|-----------|-------------|-----------------|------------------|-----------------------|------|---------------------------------------|---------------|-------------|-----------------|
| Project to Date | 0         | 0           | 0               | 0                | 0                     | 0    | 0                                     | 0             | 0           | 7               |

| DESCRIPTION OF INCIDENTS |                                |
|--------------------------|--------------------------------|
| Shift                    | Toolbox Topic                  |
| Days                     | Looking Out For Your Coworkers |

|  |   |
|--|---|
| TOTAL REPORTABLE ACCIDENT FREQUENCY RATE | 0 |
| LOST TIME ACCIDENT FREQUENCY RATE        | 0 |

| DAILY ACTIVITIES COMPLETED   |
|--|
| Worked on WRF ditch putting GEO down and covering with 6 inch. The 349 and the 980 are down and we have asked for the 374 to be floated up but did not happen. |

| PLANNED ACTIVITIES FOR NEXT DAY  |
|--|
| Keep working on WRF ditch. Placing GEO Textile and rock in ditch. Start excavating East ditch if the equipment is back up and running. |

| CONTRACTOR REMARKS   |
|--|
| Waiting on permits for 105 pond. Waiting for insulation for under slab at Viper Pad. Two critical machines down 349 and 980. High wind really slowed the guys down laying the GEO out yesterday. Very high winds yesterday, raining and heavy fog. Waiting on mine Operations to build road beside east ditch. The 374 didn't get floated up the mountain yet. |

| PROJECT PROGRESS | □ □ |
|------------------|-----|
|------------------|-----|

| Waste Rock Facility Expansion Perimeter Ditch |              |                                       |                |              |                                     |
|---|--------------|---------------------------------------|----------------|--------------|-------------------------------------|
| Station Number                                | Ditch Status | Comments                              | Station Number | Ditch Status | Comments                            |
| 0+438 - 0+450                                 | 100%         | GEO textile and rock placed to grade. | 0+775 - 0+800  | 100%         | Ditch bottom to grade/shaped slopes |
| 0+450 - 0+475                                 | 100%         | GEO textile and rock placed to grade. | 0+800 - 0+825  | 100%         | Ditch bottom to grade/shaped slopes |
| 0+475 - 0+500                                 | 100%         | GEO textile and rock placed to grade. | 0+825 - 0+850  | 100%         | Ditch bottom to grade/shaped slopes |
| 0+500 - 0+525                                 | 100%         | GEO textile and rock placed to grade. | 0+850 - 0+875  | 100%         | Ditch bottom to grade/shaped slopes |
| 0+525 - 0+550                                 | 100%         | Ditch bottom to grade/shaped slopes   | 0+875 - 0+900  | 100%         | Ditch bottom to grade/shaped slopes |
| 0+550 - 0+575                                 | 100%         | Ditch bottom to grade/shaped slopes   | 0+900 - 0+925  | 100%         | Ditch bottom to grade/shaped slopes |
| 0+575 - 0+600                                 | 100%         | Ditch bottom to grade/shaped slopes   | 0+925 - 0+950  | 100%         | Ditch bottom to grade/shaped slopes |
| 0+600 - 0+625                                 | 100%         | Ditch bottom to grade/shaped slopes   | 0+950 - 0+975  | 100%         | Ditch bottom to grade/shaped slopes |
| 0+625 - 0+650                                 | 100%         | Ditch bottom to grade/shaped slopes   | 0+975 - 1+000  | 100%         | Ditch bottom to grade/shaped slopes |
| 0+650 - 0+675                                 | 100%         | Ditch bottom to grade/shaped slopes   | 1+000 - 1+025  | 100%         | Ditch bottom to grade/shaped slopes |
| 0+675 - 0+700                                 | 100%         | Ditch bottom to grade/shaped slopes   | 1+025 - 1+050  | 30%          | Dug to frozen bottom                |
| 0+700 - 0+725                                 | 100%         | Ditch bottom to grade/shaped slopes   | 1+050 - 1+075  | 30%          | Dug to frozen bottom                |
| 0+725 - 0+750                                 | 100%         | Ditch bottom to grade/shaped slopes   | 1+075 - 1+081  | 30%          | Dug to frozen bottom                |
| 0+750 - 0+775                                 | 100%         | Ditch bottom to grade/shaped slopes   |                |              |                                     |
| VIPER PAD                                     |              |                                       |                |              |                                     |
|   |              | Subgrade Excavation                   |                | 100%         |                                     |
|   |              | Placing and Packing 6 inch            |                | 100%         |                                     |
|   |              | Placing and Packing 3/4               |                | 80%          |                                     |

| MANPOWER DEMOGRAPHICS |                        |            |       |
|-----------------------|------------------------|------------|-------|
| COMPANY               | POSITION               | HOURS      | COUNT |
| Nuna East             | Julian Sobkow          | 12.0       | 1     |
| Nuna East             | Brian Brown            | 12.0       | 1     |
| Nuna East             | Cordell Hodder         | Multi      | 12.0  |
| Nuna East             | Aaron Weber            | Multi      | 12.0  |
| Nuna East             | Jonathan Noel-Chiasson | Multi      | 12.0  |
| Nuna East             | Pierre-Luc Barriault   | 12.0       | 1     |
| Nuna East             | Vincent Hodder         | Truck      | 12.0  |
| Nuna East             | Keven Lavigne-Rousseau | Skilled    | 12.0  |
| Nuna East             | Cody McKav             | Skilled    | 12.0  |
| Nuna East             |                        |            |       |
| Nuna East             | Harvey Blouin          | Supervisor | 13.0  |
| TOTAL                 |                        | 121        | 10    |

| EQUIPMENT ONSITE   |        |        |        |                                      |
|--------------------|--------|--------|--------|--------------------------------------|
| Description        | Unit   | Op Hrs | Status | Comments                             |
| Cat 336 Excavator  | 326508 | 10.5   | UP     |                                      |
| Cat 349 Excavator  | 326513 | 0.0    | Down   | Track pin broke and tack is off.     |
| Cat 374 Excavator  | 326503 | 0.0    | UP     | Waiting to get it moved up the hill. |
| Cat D6 Dozer       | 326807 | 0.0    | Up     |                                      |
| Cat D8 Dozer       | 327306 | 0.0    | Up     |                                      |
| Cat 980 Loader     | 326806 | 0.0    | Down   | Hose leakage                         |
| Cat CS56B          | 327901 | 0.0    | Up     |                                      |
| Cat 745 Rock Truck | 325803 | 8.0    | Up     |                                      |
| Cat 745 Rock Truck | 325819 | 8.0    | Up     |                                      |

| PROJECT QUANTITIES      |                                      |          |      |                  |             |       |            |
|-------------------------|--------------------------------------|----------|------|------------------|-------------|-------|------------|
| 110KM HD Equipment Shop | Estimated Quantities                 | Quantity | Unit | Quantity to date | Daily Total | Total | % Complete |
|                         | Excavation                           | 0        | m3   | 0                | 0           | 0     |            |
|                         | LHP 6" to Building Perimeter         | 725      | m3   | 0                | 0           | 0     | 0%         |
|                         | LHP Surfacing to Building Perimeter  | 290      | m3   | 0                | 0           | 0     | 0%         |
|                         | Place 6" crush to underside of Slab  | 575      | m3   | 416              | 0           | 416   | 72%        |
|                         | LHP Crush to underside of Slab       | 518      | m3   | 261              | 0           | 261   | 50%        |
|                         | Install Insulation                   | 2,300    | m2   | 0                | 0           | 0     | 0%         |
|                         | Grand Total                          |          |      | 0                | 0           | 677   |            |
| WRF Expansion           | Estimated Quantities                 | Quantity | Unit | Quantity to date | Daily Total | Total | % Complete |
|                         | Excavation                           | 6,750    | m3   | 0                | 0           | 0     | 0%         |
|                         | Install Geotextile                   | 9,750    | m2   | 6455             | 1035        | 7490  | 77%        |
|                         | LHP Rip Rap                          | 2,790    | m3   | 855              | 330         | 1185  | 42%        |
|                         | Grand Total                          |          |      |                  | 1365        | 8675  |            |
| HD Truck Shop           | Estimated Quantities                 | Quantity | Unit | Quantity to date | Daily Total | Total | % Complete |
|                         | Excavation                           | 0        | m3   | 0                | 0           | 0     |            |
|                         | LHP -ROQ General Fill                | 1,600    | m3   | 0                | 0           | 0     | 0%         |
|                         | LHP 6" Transition Material           | 1,200    | m3   | 0                | 0           | 0     | 0%         |
|                         | LHP 3/4" Crush                       | 720      | m3   | 0                | 0           | 0     | 0%         |
|                         | Install Insulation                   | 1,500    | m2   | 0                | 0           | 0     | 0%         |
|                         | Grand Total                          |          |      |                  | 0           | 0     |            |
| KM 105 Pond             | Estimated Quantities                 | Quantity | Unit | Quantity to date | Daily Total | Total | % Complete |
|                         | Site Prep                            | 1        | LS   | 0                | 0           | 0     |            |
|                         | LHP -ROQ                             | 180,000  | m3   | 0                | 0           | 0     | 0%         |
|                         | LHP 6" Transition Material           | 60,000   | m3   | 0                | 0           | 0     | 0%         |
|                         | LHP Crush                            | 60,000   | m3   | 0                | 0           | 0     | 0%         |
|                         | Liner Installation                   | 1        | LS   | 0                | 0           | 0     | 0%         |
|                         | Grand Total                          |          |      |                  | 0           | 0     |            |
| Port Warehouse          | Estimated Quantities                 | Quantity | Unit | Quantity to date | Daily Total | Total | % Complete |
|                         | LHP 6" Crush to final design lines   | 260      | m3   | 0                | 0           | 0     | 0%         |
|                         | LHP 3/4" Crush to final design lines | 1,250    | m3   | 0                | 0           | 0     | 0%         |
|                         | Install Insulation                   | 1,638    | m2   | 0                | 0           | 0     | 0%         |
|                         | Grand Total                          |          |      |                  | 0           | 0     |            |



Date: Tuesday, July 27, 2021

Working Hours: 6:00am to 6:00am

Job No: CC006

PROJECT PHOTOS



|                                       |  |                      |
|---------------------------------------|--|----------------------|
| <b>Date: Wednesday, July 28, 2021</b> | <b>Working Hours: 6:00am to 6:00am</b> | <b>Job No: CC006</b> |
|---------------------------------------|--|----------------------|



| PROJECT SAFETY  | First Aid | Medical Aid | Property Damage | Equipment Damage | Environmental Release | Fire | Vehicle / Equipment Incident (Moving) | Project Total | Near Misses | Hazard ID Cards |
|-----------------|-----------|-------------|-----------------|------------------|-----------------------|------|---------------------------------------|---------------|-------------|-----------------|
| Project to Date | 0         | 0           | 0               | 0                | 0                     | 0    | 0                                     | 0             | 0           | 7               |

| DESCRIPTION OF INCIDENTS |                |
|--------------------------|----------------|
| Shift                    | Toolbox Topic  |
| Days                     | Safety Glasses |

|  |   |
|--|---|
| TOTAL REPORTABLE ACCIDENT FREQUENCY RATE | 0 |
| LOST TIME ACCIDENT FREQUENCY RATE        | 0 |

| DAILY ACTIVITIES COMPLETED   |
|--|
| The West ditch is complete. Still waiting on the bird sweep for the East ditch and the road. |

| PLANNED ACTIVITIES FOR NEXT DAY   |
|---|
| Today the shovel assembly pad will get done and any loose ends around the 110 shop pad. |

| CONTRACTOR REMARKS  |
|---|
| Waiting on permits for 105 pond. Waiting for insulation for under slab at Viper Pad. Waiting on design for the HD Truck shop. All the equipment is back up. |

| PROJECT PROGRESS | □      □ |
|------------------|----------|
|------------------|----------|

| Waste Rock Facility Expansion Perimeter Ditch |              |                                       |                |              |                                     |
|---|--------------|---------------------------------------|----------------|--------------|-------------------------------------|
| Station Number                                | Ditch Status | Comments                              | Station Number | Ditch Status | Comments                            |
| 0+438 - 0+450                                 | 100%         | GEO textile and rock placed to grade. | 0+775 - 0+800  | 100%         | Ditch bottom to grade/shaped slopes |
| 0+450 - 0+475                                 | 100%         | GEO textile and rock placed to grade. | 0+800 - 0+825  | 100%         | Ditch bottom to grade/shaped slopes |
| 0+475 - 0+500                                 | 100%         | GEO textile and rock placed to grade. | 0+825 - 0+850  | 100%         | Ditch bottom to grade/shaped slopes |
| 0+500 - 0+525                                 | 100%         | GEO textile and rock placed to grade. | 0+850 - 0+875  | 100%         | Ditch bottom to grade/shaped slopes |
| 0+525 - 0+550                                 | 100%         | Ditch bottom to grade/shaped slopes   | 0+875 - 0+900  | 100%         | Ditch bottom to grade/shaped slopes |
| 0+550 - 0+575                                 | 100%         | Ditch bottom to grade/shaped slopes   | 0+900 - 0+925  | 100%         | Ditch bottom to grade/shaped slopes |
| 0+575 - 0+600                                 | 100%         | Ditch bottom to grade/shaped slopes   | 0+925 - 0+950  | 100%         | Ditch bottom to grade/shaped slopes |
| 0+600 - 0+625                                 | 100%         | Ditch bottom to grade/shaped slopes   | 0+950 - 0+975  | 100%         | Ditch bottom to grade/shaped slopes |
| 0+625 - 0+650                                 | 100%         | Ditch bottom to grade/shaped slopes   | 0+975 - 1+000  | 100%         | Ditch bottom to grade/shaped slopes |
| 0+650 - 0+675                                 | 100%         | Ditch bottom to grade/shaped slopes   | 1+000 - 1+025  | 100%         | Ditch bottom to grade/shaped slopes |
| 0+675 - 0+700                                 | 100%         | Ditch bottom to grade/shaped slopes   | 1+025 - 1+050  | 100%         | Ditch bottom to grade/shaped slopes |
| 0+700 - 0+725                                 | 100%         | Ditch bottom to grade/shaped slopes   | 1+050 - 1+075  | 100%         | Ditch bottom to grade/shaped slopes |
| 0+725 - 0+750                                 | 100%         | Ditch bottom to grade/shaped slopes   | 1+075 - 1+081  | 100%         | Ditch bottom to grade/shaped slopes |
| 0+750 - 0+775                                 | 100%         | Ditch bottom to grade/shaped slopes   |                |              |                                     |
| VIPER PAD                                     |              |                                       |                |              |                                     |
|   |              | Subgrade Excavation                   |                | 100%         |                                     |
|   |              | Placing and Packing 6 inch            |                | 100%         |                                     |
|   |              | Placing and Packing 3/4               |                | 80%          |                                     |

| MANPOWER DEMOGRAPHICS |                        |            |           | EQUIPMENT ONSITE   |        |        |        |          |
|-----------------------|------------------------|------------|-----------|--------------------|--------|--------|--------|----------|
| COMPANY               | POSITION               | HOURS      | COUNT     | Description        | Unit   | Op Hrs | Status | Comments |
| Nuna East             | Julian Sobkow          | 12.0       | 1         | Cat 336 Excavator  | 326508 | 9.5    | UP     |          |
| Nuna East             | Brian Brown            | 12.0       | 1         | Cat 349 Excavator  | 326513 | 6.0    | UP     |          |
| Nuna East             | Cordell Hodder         | Multi      | 1         | Cat 374 Excavator  | 326503 | 2.5    | UP     |          |
| Nuna East             | Aaron Weber            | Multi      | 1         | Cat D6 Dozer       | 326807 | 0.0    | UP     |          |
| Nuna East             | Jonathan Noel-Chiasson | Multi      | 1         | Cat D8 Dozer       | 327306 | 0.0    | UP     |          |
| Nuna East             | Pierre-Luc Barriault   | 12.0       | 1         |                    |        |        |        |          |
| Nuna East             | Vincent Hodder         | Truck      | 1         |                    |        |        |        |          |
| Nuna East             | Kevin Lavoie-Rousseau  | Skilled    | 1         | Cat 980 Loader     | 326806 | 0.0    | UP     |          |
| Nuna East             | Cody McKav             | Skilled    | 1         | Cat CSS6B          | 327901 | 0.0    | UP     |          |
| Nuna East             |                        |            |           | Cat 745 Rock Truck | 325803 | 8.0    | UP     |          |
| Nuna East             | Harvey Blouin          | Supervisor | 1         | Cat 745 Rock Truck | 325819 | 8.0    | UP     |          |
| <b>TOTAL</b>          |                        | <b>121</b> | <b>10</b> |                    |        |        |        |          |

| PROJECT QUANTITIES      |                                      |          |      |                  |             |       |            |
|-------------------------|--------------------------------------|----------|------|------------------|-------------|-------|------------|
| 110KM HD Equipment Shop | Estimated Quantities                 | Quantity | Unit | Quantity to date | Daily Total | Total | % Complete |
|                         | Excavation                           | 0        | m3   | 0                | 0           | 0     |            |
|                         | LHP 6" to Building Perimeter         | 725      | m3   | 0                | 0           | 0     | 0%         |
|                         | LHP Surfacing to Building Perimeter  | 290      | m3   | 0                | 0           | 0     | 0%         |
|                         | Place 6" crush to underside of Slab  | 575      | m3   | 416              | 0           | 416   | 72%        |
|                         | LHP Crush to underside of Slab       | 518      | m3   | 261              | 0           | 261   | 50%        |
|                         | Install Insulation                   | 2,300    | m2   | 0                | 0           | 0     | 0%         |
|                         | <b>Grand Total</b>                   |          |      | 0                | 0           | 677   |            |
| WRF Expansion           | Estimated Quantities                 | Quantity | Unit | Quantity to date | Daily Total | Total | % Complete |
|                         | Excavation                           | 6,750    | m3   | 0                | 0           | 0     | 0%         |
|                         | Install Geotextile                   | 9,750    | m2   | 6455             | 1035        | 7490  | 77%        |
|                         | LHP Rip Rap                          | 2,790    | m3   | 855              | 345         | 1185  | 42%        |
|                         | <b>Grand Total</b>                   |          |      |                  | 1380        | 8675  |            |
| HD Truck Shop           | Estimated Quantities                 | Quantity | Unit | Quantity to date | Daily Total | Total | % Complete |
|                         | Excavation                           | 0        | m3   | 0                | 0           | 0     |            |
|                         | LHP -ROQ General Fill                | 1,600    | m3   | 0                | 0           | 0     | 0%         |
|                         | LHP 6" Transition Material           | 1,200    | m3   | 0                | 0           | 0     | 0%         |
|                         | LHP 3/4" Crush                       | 720      | m3   | 0                | 0           | 0     | 0%         |
|                         | Install Insulation                   | 1,500    | m2   | 0                | 0           | 0     | 0%         |
|                         | <b>Grand Total</b>                   |          |      |                  | 0           | 0     |            |
| KM 105 Pond             | Estimated Quantities                 | Quantity | Unit | Quantity to date | Daily Total | Total | % Complete |
|                         | Site Prep                            | 1        | LS   | 0                | 0           | 0     |            |
|                         | LHP -ROQ                             | 180,000  | m3   | 0                | 0           | 0     | 0%         |
|                         | LHP 6" Transition Material           | 60,000   | m3   | 0                | 0           | 0     | 0%         |
|                         | LHP Crush                            | 60,000   | m3   | 0                | 0           | 0     | 0%         |
|                         | Liner Installation                   | 1        | LS   | 0                | 0           | 0     | 0%         |
|                         | <b>Grand Total</b>                   |          |      |                  | 0           | 0     |            |
| Port Warehouse          | Estimated Quantities                 | Quantity | Unit | Quantity to date | Daily Total | Total | % Complete |
|                         | LHP 6" Crush to final design lines   | 260      | m3   | 0                | 0           | 0     | 0%         |
|                         | LHP 3/4" Crush to final design lines | 1,250    | m3   | 0                | 0           | 0     | 0%         |
|                         | Install Insulation                   | 1,638    | m2   | 0                | 0           | 0     | 0%         |
|                         | <b>Grand Total</b>                   |          |      |                  | 0           | 0     |            |

Date: Wednesday, July 28, 2021

Working Hours: 6:00am to 6:00am

Job No: CC006

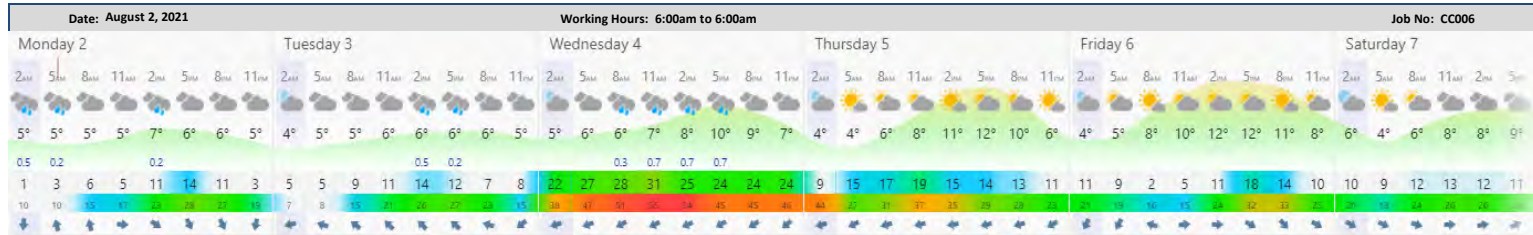
PROJECT PHOTOS







BAFFINLAND IRON MINES  
Waste Rock Facility Expansion Water Management  
DAILY REPORT



Date: August 2, 2021

Working Hours: 6:00am to 6:00am

Job No: CC006

PROJECT PHOTOS



|                | Estimated Quantities                 | Quantity | Unit | Quantity to date | Daily Total | Total | % Complete |
|----------------|--------------------------------------|----------|------|------------------|-------------|-------|------------|
| Port Warehouse | LHP 6" Crush to final design lines   | 260      | m3   | 0                | 0           | 0     |            |
|                | LHP 3/4" Crush to final design lines | 1,250    | m3   | 0                | 0           | 0     | 0%         |
|                | Install Insulation                   | 1,638    | m2   | 0                | 0           | 0     | 0%         |
|                | <b>Grand Total</b>                   |          |      |                  | 0           | 0     |            |



Date: July 31, 2021

Working Hours: 6:00am to 6:00am

Job No: CC006

PROJECT PHOTOS



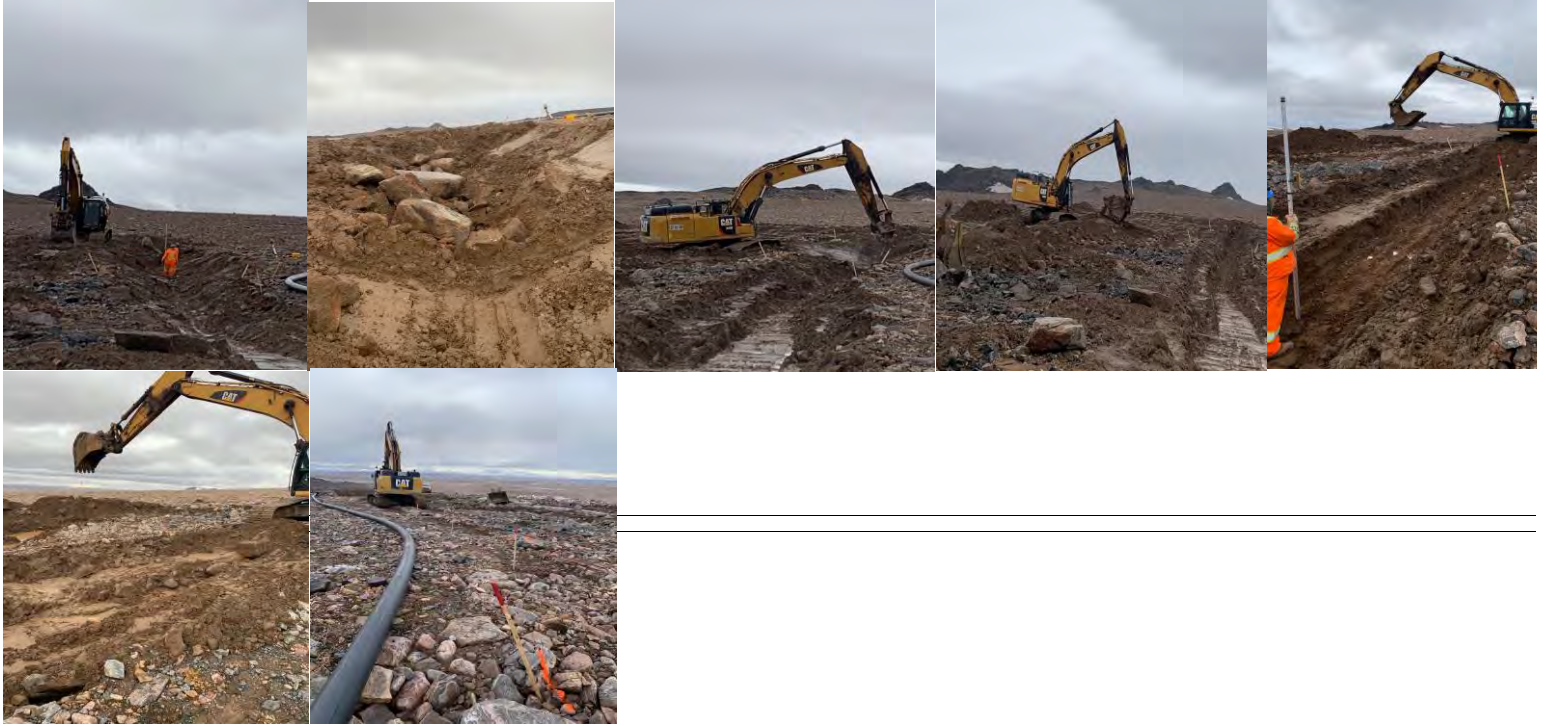
|                | Estimated Quantities                 | Quantity | Unit | Quantity to date | Daily Total | Total | % Complete |
|----------------|--------------------------------------|----------|------|------------------|-------------|-------|------------|
| Port Warehouse | LHP 6" Crush to final design lines   | 260      | m3   | 0                | 0           | 0     |            |
|                | LHP 3/4" Crush to final design lines | 1,250    | m3   | 0                | 0           | 0     | 0%         |
|                | Install Insulation                   | 1,638    | m2   | 0                | 0           | 0     | 0%         |
|                | <b>Grand Total</b>                   |          |      |                  | 0           | 0     | 0%         |

Date: August 1, 2021

Working Hours: 6:00am to 6:00am

Job No: CC006

PROJECT PHOTOS







BAFFINLAND IRON MINES  
Waste Rock Facility Expansion Water Management  
DAILY REPORT



Date: December 29, 2021

Working Hours: 6:00am to 6:00am

Job No: CC006



| PROJECT SAFETY  | First Aid | Medical Aid | Property Damage | Equipment Damage | Environmental Release | Fire | Vehicle / Equipment Incident (Moving) | Project Total | Near Misses | Hazard ID Cards |
|-----------------|-----------|-------------|-----------------|------------------|-----------------------|------|---------------------------------------|---------------|-------------|-----------------|
| Project to Date | 0         | 0           | 0               | 0                | 0                     | 0    | 1                                     | 1             | 0           | 7               |

| DESCRIPTION OF INCIDENTS |
|--------------------------|
| SHR                      |
| Toolbox Topic            |
| Days                     |

|  |   |
|--|---|
| TOTAL REPORTABLE ACCIDENT FREQUENCY RATE | 0 |
| LOST TIME ACCIDENT FREQUENCY RATE        | 0 |

| DAILY ACTIVITIES COMPLETED  |
|---|
| Removed unsuitable old 3/4 from shovel pad, Prep apron area around shop Pad, Building new WRF (East Ring Road) Road, working on WRF Ditch and continued training ( mine ride alongs not done due to trucks not running) |

| PLANNED ACTIVITIES FOR NEXT DAY  |
|--|
| Continue Excavation on East perimeter ditch, Survey to model and enter data for ongoing jobs, 793 ride alongs if mine ops can accomdate, continue with WRF Road, Replace 3/4 Spec material (if approved) for shovel and shop pads, Bury and add culvert with gravel for existing water line for WRF Ring Road. |

| CONTRACTOR REMARKS  |
|---|
| Waiting on permits for 105 pond. Waiting for Insulation for under slab at 110 HD Shop Pad. Waiting on 3/4 spec analysis for Pads. |

| Waste Rock Facility Expansion West Perimeter Ditch |              |  |                |              |  | Waste Rock Facility Expansion East Perimeter Ditch |              |                            |
|--|--------------|--|----------------|--------------|--|--|--------------|----------------------------|
| Station Number                                     | Ditch Status | Comments                               | Station Number | Ditch Status | Comments                               | Station Number                                     | Ditch Status | Comments                   |
| 0+438 - 0+450                                      | 100%         | Geotextile and riprap placed to grade. | 0+775 - 0+800  | 100%         | Geotextile and riprap placed to grade. | 0+683 - 0+700                                      |              | Offset center line stakes. |
| 0+450 - 0+475                                      | 100%         | Geotextile and riprap placed to grade. | 0+800 - 0+825  | 100%         | Geotextile and riprap placed to grade. | 0+700 - 0+725                                      |              |                            |
| 0+475 - 0+500                                      | 100%         | Geotextile and riprap placed to grade. | 0+825 - 0+850  | 100%         | Geotextile and riprap placed to grade. | 0+725 - 0+750                                      |              |                            |
| 0+500 - 0+525                                      | 100%         | Geotextile and riprap placed to grade. | 0+850 - 0+875  | 100%         | Geotextile and riprap placed to grade. | 0+750 - 0+775                                      | 60%          | Ditch bottom cut to grade  |
| 0+525 - 0+550                                      | 100%         | Geotextile and riprap placed to grade. | 0+875 - 0+900  | 100%         | Geotextile and riprap placed to grade. | 0+775 - 0+800                                      | 60%          | Ditch bottom cut to grade  |
| 0+550 - 0+575                                      | 100%         | Geotextile and riprap placed to grade. | 0+900 - 0+925  | 100%         | Geotextile and riprap placed to grade. | 0+800 - 0+825                                      | 60%          | Ditch bottom cut to grade  |
| 0+575 - 0+600                                      | 100%         | Geotextile and riprap placed to grade. | 0+925 - 0+950  | 100%         | Geotextile and riprap placed to grade. | 0+825 - 0+850                                      | 60%          | Ditch bottom cut to grade  |
| 0+600 - 0+625                                      | 100%         | Geotextile and riprap placed to grade. | 0+950 - 0+975  | 100%         | Geotextile and riprap placed to grade. | 0+850 - 0+875                                      | 60%          | Ditch bottom cut to grade  |
| 0+625 - 0+650                                      | 100%         | Geotextile and riprap placed to grade. | 0+975 - 1+000  | 100%         | Geotextile and riprap placed to grade. | 0+875 - 0+900                                      | 60%          | Ditch bottom cut to grade  |
| 0+650 - 0+675                                      | 100%         | Geotextile and riprap placed to grade. | 1+000 - 1+025  | 100%         | Geotextile and riprap placed to grade. | 0+900 - 0+925                                      | 60%          | Ditch bottom cut to grade  |
| 0+675 - 0+700                                      | 100%         | Geotextile and riprap placed to grade. | 1+025 - 1+050  | 100%         | Geotextile and riprap placed to grade. | 0+925 - 0+950                                      | 60%          | Ditch bottom cut to grade  |
| 0+700 - 0+725                                      | 100%         | Geotextile and riprap placed to grade. | 1+050 - 1+075  | 100%         | Geotextile and riprap placed to grade. | 0+950 - 0+975                                      | 60%          | Ditch bottom cut to grade  |
| 0+725 - 0+750                                      | 100%         | Geotextile and riprap placed to grade. | 1+075 - 1+081  | 100%         | Geotextile and riprap placed to grade. | 0+975 - 1+000                                      | 60%          | Ditch bottom cut to grade  |
| 0+750 - 0+775                                      | 100%         | Geotextile and riprap placed to grade. |                |              |  | 1+000 - 1+025                                      |              |                            |
|  |              |  |                |              |  | 1+025 - 1+050                                      |              |                            |
|  |              |  |                |              |  | 1+050 - 1+066                                      |              |                            |
|  |              |  |                |              | 110 HD Shop Pad                        |  |              |                            |
|  |              |  |                |              | Subgrade Excavation                    |  | 100%         |                            |
|  |              |  |                |              | Placing and Packing 6 inch             |  | 100%         |                            |
|  |              |  |                |              | Placing and Packing 3/4                |  | 80%          |                            |

| MANPOWER DEMOGRAPHICS |                   |          |       |       |
|-----------------------|-------------------|----------|-------|-------|
| COMPANY               |                   | POSITION | HOURS | COUNT |
| Nuna East             | Superintendent    |          | 13.0  | 1     |
| Nuna East             | Foremen           |          | 12.0  | 1     |
| Nuna East             | Surveyor          |          | 12.0  | 1     |
| Nuna East             | Trainer           |          | 12.0  | 1     |
| Nuna East             | Admin             |          | 12.0  | 1     |
| Nuna East             | Multi Operator    |          | 48.0  | 4     |
| Nuna East             | Loader Operator   | Truck    | 12.0  | 1     |
| Nuna East             | Truck Driver      |          | 48.0  | 4     |
| Nuna East             | Skilled Labourers |          | 24.0  | 2     |
| Nuna East             | Mechanic          |          | 12.0  | 1     |
| Nuna East             |                   |          | 0.0   | 0     |
| TOTAL                 |                   |          | 205   | 17    |

| EQUIPMENT ONGITE   | Description | Unit | Op Hrs | Status | Comments                  |
|--------------------|-------------|------|--------|--------|---------------------------|
| Cat 336 Excavator  | 32 65 13    | 10.0 | UP     |        |                           |
| Cat 340 Excavator  | 32 65 08    | 0.0  | On     |        | carrier roller mount bent |
| Cat 374 Excavator  | 32 65 03    | 0.0  | UP     |        |                           |
| Cat D6 Dozer       | 32 68 07    | 4.0  | Up     |        |                           |
| Cat D8 Dozer       | 32 73 06    | 6.0  | On     |        | Antifreeze Leak           |
| Cat 980 Loader     | 32 68 06    | 5.0  | Up     |        |                           |
| Cat C556B          | 32 79 01    | 3.0  | Up     |        |                           |
| Cat 745 Rock Truck | 32 58 03    | 3.0  | Up     |        | Trainline                 |
| Cat 745 Rock Truck | 32 58 09    | 0.0  | Up     |        |                           |
| Cat 745 Rock Truck | 32 58 19    | 0.0  | Up     |        |                           |

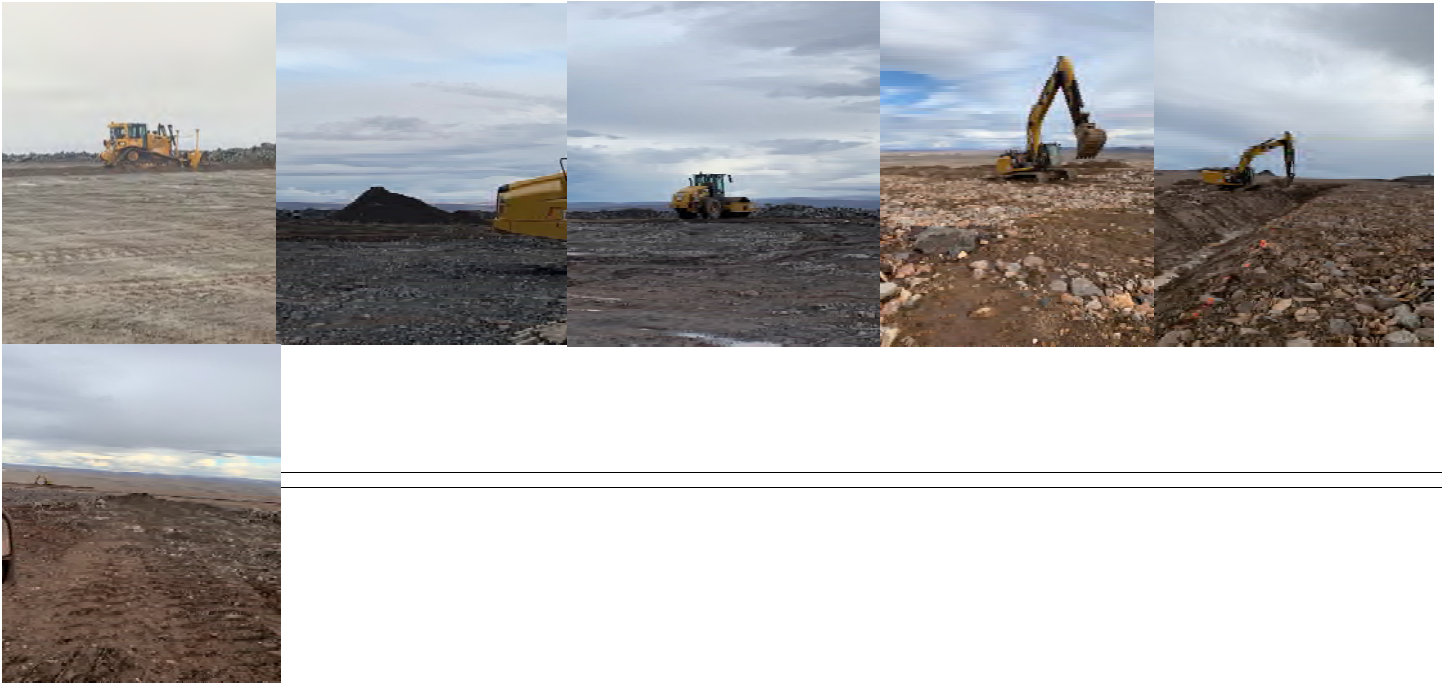
| PROJECT QUANTITIES      |                                      |          |      |                  |             |         |            |
|-------------------------|--------------------------------------|----------|------|------------------|-------------|---------|------------|
| 110KM HD Equipment Shop | Estimated Quantities                 | Quantity | Unit | Quantity to date | Daily Total | Total   | % Complete |
|                         | Excavation                           | 0        | m3   | 0                | 0           | 0       |            |
|                         | LHP 6" to Building Perimeter         | 725      | m3   | 0                | 0           | 0       | 0%         |
|                         | LHP Surfacing to Building Perimeter  | 290      | m3   | 0                | 0           | 0       | 0%         |
|                         | Place 6" crush to underside of Slab  | 575      | m3   | 416              | 0           | 416     | 72%        |
|                         | LHP Crush to underside of Slab       | 518      | m3   | 293              | 0           | 293     | 57%        |
|                         | Install Insulation                   | 2,300    | m2   | 0                | 0           | 0       | 0%         |
| Grand Total             |                                      |          |      | 0                | 0           | 709     |            |
| WRF Expansion           | Estimated Quantities                 | Quantity | Unit | Quantity to date | Daily Total | Total   | % Complete |
|                         | Excavation                           | 6,750    | m3   | 3778             | 582.4       | 4360.4  | 65%        |
|                         | Install Geotextile                   | 9,750    | m2   | 4815             | 1035        | 5850    | 60%        |
|                         | LHP Rip Rap                          | 2,790    | m3   | 855              | 330         | 1185    | 42%        |
| Grand Total             |                                      |          |      | 1947.4           |             | 11395.4 |            |
| HD Truck Shop           | Estimated Quantities                 | Quantity | Unit | Quantity to date | Daily Total | Total   | % Complete |
|                         | Excavation                           | 0        | m3   | 0                | 0           | 0       |            |
|                         | LHP -R/Q General Fill                | 1,600    | m3   | 0                | 0           | 0       | 0%         |
|                         | LHP 6" Transition Material           | 1,200    | m3   | 0                | 0           | 0       | 0%         |
|                         | LHP 3/4" Crush                       | 720      | m3   | 0                | 0           | 0       | 0%         |
|                         | Install Insulation                   | 1,500    | m2   | 0                | 0           | 0       | 0%         |
| Grand Total             |                                      |          |      | 0                | 0           | 0       |            |
| KM 105 Pond             | Estimated Quantities                 | Quantity | Unit | Quantity to date | Daily Total | Total   | % Complete |
|                         | Site Prep                            | 1        | LS   | 0                | 0           | 0       | 0%         |
|                         | LHP -R/Q                             | 180,000  | m3   | 0                | 0           | 0       | 0%         |
|                         | LHP 6" Transition Material           | 60,000   | m3   | 0                | 0           | 0       | 0%         |
|                         | LHP Crush                            | 60,000   | m3   | 0                | 0           | 0       | 0%         |
|                         | Liner Installation                   | 1        | LS   | 0                | 0           | 0       | 0%         |
| Grand Total             |                                      |          |      | 0                | 0           | 0       |            |
| Port Warehouse          | Estimated Quantities                 | Quantity | Unit | Quantity to date | Daily Total | Total   | % Complete |
|                         | LHP 6" Crush to final design lines   | 260      | m3   | 0                | 0           | 0       | 0%         |
|                         | LHP 3/4" Crush to final design lines | 1,250    | m3   | 0                | 0           | 0       | 0%         |
|                         | Install Insulation                   | 1,638    | m2   | 0                | 0           | 0       | 0%         |
| Grand Total             |                                      |          |      | 0                | 0           | 0       |            |

Date: December 29, 2021

Working Hours: 6:00am to 6:00am

Job No: CC006

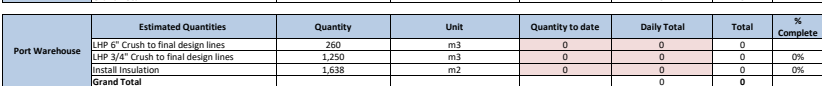
PROJECT PHOTOS







**Job No: CC006**



PROJECT PHOTOS



| DAILY ACTIVITIES COMPLETED   |
|--|
| Removed mud from Water Line Crossing and added 3/4 crush, with 1/2 culvert covering water line. Finished removing unsuitable 3/4 from Shop Pad, proof roll, and load/haul/placing 6". Survey drafting. |
|  |
| PLANNED ACTIVITIES FOR NEXT DAY  |
| Continued work on the water line crossing, placing on Ring Road, Place remaining 6" and crush on pad. Retrive and install liner for protective covering of pad. Survey to keep check on elevations.    |
|  |
| CONTRACTOR REMARKS   |
| Waiting on permits for 105 pond. Waiting for insulation for under slab at 110 HD Shop Pad.   |
|  |

| MANPOWER DEMOGRAPHICS |                   |            |           |
|-----------------------|-------------------|------------|-----------|
| COMPANY               | POSITION          | HOURS      | COUNT     |
| Nuna East             | Superintendent    | 13.0       | 1         |
| Nuna East             | Foremen           | 12.0       | 1         |
| Nuna East             | Surveyor          | 12.0       | 1         |
| Nuna East             | Trainer           | 12.0       | 1         |
| Nuna East             | Admin             | 12.0       | 1         |
| Nuna East             | Multi Operator    | 48.0       | 4         |
| Nuna East             | Loader Operator   | 12.0       | 1         |
| Nuna East             | Truck Driver      | 48.0       | 4         |
|                       |                   |            |           |
| Nuna East             | Skilled Labourers | 24.0       | 2         |
| Nuna East             | Mechanic          | 12.0       | 1         |
| Nuna East             |                   | 0.0        | 0         |
| <b>TOTAL</b>          |                   | <b>205</b> | <b>17</b> |

| EQUIPMENT ONSITE   |          |                 |        |          |
|--------------------|----------|-----------------|--------|----------|
| Description        | Unit     | Op Hrs<br>DS/NS | Status | Comments |
| Cat 336 Excavator  | 32 65 13 | 10.0            | Up     |          |
| Cat 340 Excavator  | 32 65 08 | 2.5             | Up     |          |
| Cat 374 Excavator  | 32 65 03 | 0.0             | Up     |          |
| Cat D6 Dozer       | 32 68 07 | 6.5             | Up     |          |
| Cat D8 Dozer       | 32 73 06 | 0.0             | Up     |          |
|                    |          |                 |        |          |
| Cat 980 Loader     | 32 68 06 | 10.0            | Up     |          |
|                    |          |                 |        |          |
| Cat CS56B          | 32 79 01 | 3.0             | Up     |          |
| Cat 745 Rock Truck | 32 58 03 | 10.0            | Up     |          |
| Cat 745 Rock Truck | 32 58 08 | 6.0             | Up     |          |
| Cat 745 Rock Truck | 32 58 09 | 0.0             | Up     |          |
| Cat 745 Rock Truck | 32 58 19 | 10.0            | Up     |          |

| PROJECT QUANTITIES      |                                      |          |      |                  |             |         |            |
|-------------------------|--------------------------------------|----------|------|------------------|-------------|---------|------------|
| 110KM HD Equipment Shop | Estimated Quantities                 | Quantity | Unit | Quantity to date | Daily Total | Total   | % Complete |
|                         | Excavation                           | 0        | m3   | 0                | 0           | 0       |            |
|                         | LHP 6" to Building Perimeter         | 725      | m3   | 0                | 175         | 175     | 24%        |
|                         | LHP Surfacing to Building Perimeter  | 290      | m3   | 0                | 0           | 0       | 0%         |
|                         | Place 6" crush to underside of Slab  | 575      | m3   | 416              | 763         | 1179    | 205%       |
|                         | LHP 3/4 Crush to underside of Slab   | 518      | m3   | 293              | 0           | 293     | 57%        |
|                         | Install Insulation                   | 2,300    | m2   | 0                | 0           | 0       | 0%         |
| Grand Total             |                                      |          |      | 938              | 1647        |         |            |
| WRF Expansion           | Estimated Quantities                 | Quantity | Unit | Quantity to date | Daily Total | Total   | % Complete |
|                         | Excavation                           | 6,750    | m3   | 4360.4           | 219.5       | 4579.9  | 68%        |
|                         | Install Geotextile                   | 9,750    | m2   | 4815             | 1035        | 5850    | 60%        |
|                         | Load LHP 3/4 Water Line              | 309      | m3   | 309              | 309         | 309     | 100%       |
|                         | LHP Rip Rap                          | 2,790    | m3   | 855              | 330         | 1185    | 42%        |
|                         | Grand Total                          |          |      |                  | 1893.5      | 11923.9 |            |
| HD Truck Shop           | Estimated Quantities                 | Quantity | Unit | Quantity to date | Daily Total | Total   | % Complete |
|                         | Excavation                           | 0        | m3   | 0                | 0           | 0       |            |
|                         | LHP -ROQ General Fill                | 1,600    | m3   | 0                | 0           | 0       | 0%         |
|                         | LHP 6" Transition Material           | 1,200    | m3   | 0                | 0           | 0       | 0%         |
|                         | LHP 3/4" Crush                       | 720      | m3   | 0                | 0           | 0       | 0%         |
|                         | Install Insulation                   | 1,500    | m2   | 0                | 0           | 0       | 0%         |
|                         | Grand Total                          |          |      |                  | 0           | 0       |            |
| KM 105 Pond             | Estimated Quantities                 | Quantity | Unit | Quantity to date | Daily Total | Total   | % Complete |
|                         | Site Prep                            | 1        | LS   | 0                | 0           | 0       |            |
|                         | LHP -ROQ                             | 180,000  | m3   | 0                | 0           | 0       | 0%         |
|                         | LHP 6" Transition Material           | 60,000   | m3   | 0                | 0           | 0       | 0%         |
|                         | LHP Crush                            | 60,000   | m3   | 0                | 0           | 0       | 0%         |
|                         | Liner Installation                   | 1        | LS   | 0                | 0           | 0       | 0%         |
|                         | Grand Total                          |          |      |                  | 0           | 0       |            |
| Port Warehouse          | Estimated Quantities                 | Quantity | Unit | Quantity to date | Daily Total | Total   | % Complete |
|                         | LHP 6" Crush to final design lines   | 260      | m3   | 0                | 0           | 0       |            |
|                         | LHP 3/4" Crush to final design lines | 1,250    | m3   | 0                | 0           | 0       | 0%         |
|                         | Install Insulation                   | 1,638    | m2   | 0                | 0           | 0       | 0%         |
|                         | Grand Total                          |          |      |                  |             |         |            |



PROJECT PHOTOS



|                | Estimated Quantities                 | Quantity | Unit | Quantity to date | Daily Total | Total | % Complete |
|----------------|--------------------------------------|----------|------|------------------|-------------|-------|------------|
| Port Warehouse | LHP 6" Crush to final design lines   | 260      | m3   | 0                | 0           | 0     |            |
|                | LHP 3/4" Crush to final design lines | 1,250    | m3   | 0                | 0           | 0     | 0%         |
|                | Install Insulation                   | 1,638    | m2   | 0                | 0           | 0     | 0%         |
|                | <b>Grand Total</b>                   |          |      |                  |             |       |            |

PROJECT PHOTOS







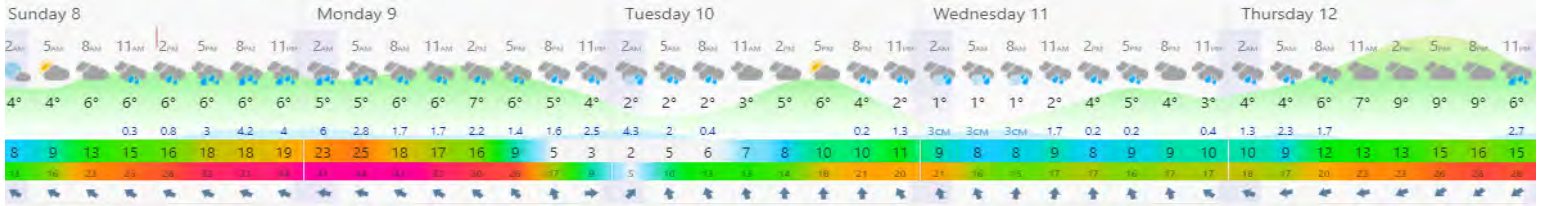
BAFFINLAND IRON MINES  
Waste Rock Facility Expansion Water Management  
DAILY REPORT



Date: Sunday, August 8, 2021

Working Hours: 6:00am to 6:00am

Job No: CC006



| PROJECT SAFETY  | First Aid | Medical Aid | Property Damage | Equipment Damage | Environmental Release | Fire | Vehicle / Equipment Incident (Moving) | Project Total | Near Misses | Hazard ID Cards |
|-----------------|-----------|-------------|-----------------|------------------|-----------------------|------|---------------------------------------|---------------|-------------|-----------------|
| Project to Date | 0         | 0           | 0               | 0                | 0                     | 0    | 1                                     | 1             | 0           | 7               |

| DESCRIPTION OF INCIDENTS |
|--------------------------|
| Shift                    |
| Toolbox Topic            |
| Days                     |
| Site Driving             |

|  |   |
|--|---|
| TOTAL REPORTABLE ACCIDENT FREQUENCY RATE | 0 |
| LONG TIME ACCIDENT FREQUENCY RATE        | 0 |

DAILY ACTIVITIES COMPLETED

Continued prep work on the Pond, Finished covering the exposed area of Shop Pad with additional liner, Placed and packed 3/4" on Shovel Pad, Moved Loader and D6 to 104 Laydown, Placed material on Ring Road. Code 1 Called at Crusher from 11:45AM - 1:30 PM.

PLANNED ACTIVITIES FOR NEXT DAY

Continued work on Ring Road and 105 Pond.

CONTRACTOR REMARKS

Waiting on permits for 105 pond. Waiting for Insulation for under slab at 110 HD Shop Pad. Project Quantities on today's report include Aug 7th (missing from yesterday)

PROJECT PROGRESS

| Waste Rock Facility Expansion West Perimeter Ditch |              |  |                |              | Waste Rock Facility Expansion East Perimeter Ditch |                |              |                            |  |
|--|--------------|--|----------------|--------------|--|----------------|--------------|----------------------------|--|
| Station Number                                     | Ditch Status | Comments                               | Station Number | Ditch Status | Comments   | Station Number | Ditch Status | Comments                   |  |
| 0+438 - 0+450                                      | 100%         | Geotextile and riprap placed to grade. | 0+775 - 0+800  | 100%         | Geotextile and riprap placed to grade.             | 0+683 - 0+700  |              | Offset center line stakes. |  |
| 0+450 - 0+475                                      | 100%         | Geotextile and riprap placed to grade. | 0+800 - 0+825  | 100%         | Geotextile and riprap placed to grade.             | 0+700 - 0+725  |              |                            |  |
| 0+475 - 0+500                                      | 100%         | Geotextile and riprap placed to grade. | 0+825 - 0+850  | 100%         | Geotextile and riprap placed to grade.             | 0+725 - 0+750  |              |                            |  |
| 0+500 - 0+525                                      | 100%         | Geotextile and riprap placed to grade. | 0+850 - 0+875  | 100%         | Geotextile and riprap placed to grade.             | 0+750 - 0+775  | 60%          | Ditch bottom cut to grade  |  |
| 0+525 - 0+550                                      | 100%         | Geotextile and riprap placed to grade. | 0+875 - 0+900  | 100%         | Geotextile and riprap placed to grade.             | 0+775 - 0+800  | 60%          | Ditch bottom cut to grade  |  |
| 0+550 - 0+575                                      | 100%         | Geotextile and riprap placed to grade. | 0+900 - 0+925  | 100%         | Geotextile and riprap placed to grade.             | 0+800 - 0+825  | 60%          | Ditch bottom cut to grade  |  |
| 0+575 - 0+600                                      | 100%         | Geotextile and riprap placed to grade. | 0+925 - 0+950  | 100%         | Geotextile and riprap placed to grade.             | 0+825 - 0+850  | 60%          | Ditch bottom cut to grade  |  |
| 0+600 - 0+625                                      | 100%         | Geotextile and riprap placed to grade. | 0+950 - 0+975  | 100%         | Geotextile and riprap placed to grade.             | 0+850 - 0+875  | 60%          | Ditch bottom cut to grade  |  |
| 0+625 - 0+650                                      | 100%         | Geotextile and riprap placed to grade. | 0+975 - 1+000  | 100%         | Geotextile and riprap placed to grade.             | 0+875 - 0+900  | 60%          | Ditch bottom cut to grade  |  |
| 0+650 - 0+675                                      | 100%         | Geotextile and riprap placed to grade. | 1+000 - 1+025  | 100%         | Geotextile and riprap placed to grade.             | 0+900 - 0+925  | 60%          | Ditch bottom cut to grade  |  |
| 0+675 - 0+700                                      | 100%         | Geotextile and riprap placed to grade. | 1+025 - 1+050  | 100%         | Geotextile and riprap placed to grade.             | 0+925 - 0+950  | 60%          | Ditch bottom cut to grade  |  |
| 0+700 - 0+725                                      | 100%         | Geotextile and riprap placed to grade. | 1+050 - 1+075  | 100%         | Geotextile and riprap placed to grade.             | 0+950 - 0+975  | 60%          | Ditch bottom cut to grade  |  |
| 0+725 - 0+750                                      | 100%         | Geotextile and riprap placed to grade. | 1+075 - 1+081  | 100%         | Geotextile and riprap placed to grade.             | 0+975 - 1+000  | 60%          | Ditch bottom cut to grade  |  |
| 0+750 - 0+775                                      | 100%         | Geotextile and riprap placed to grade. |                |              |  | 1+000 - 1+025  | 60%          | Ditch bottom cut to grade  |  |
|  |              |  |                |              |  | 1+025 - 1+050  | 60%          | Ditch bottom cut to grade  |  |
|  |              |  |                |              |  | 1+050 - 1+066  | 60%          | Ditch bottom cut to grade  |  |
|  |              |  |                |              | 110 HD Shop Pad                                    |                |              |                            |  |
|  |              |  |                |              | Subgrade Excavation                                |                |              |                            |  |
|  |              |  |                |              | Placing and Packing 6 inch                         |                |              | 100%                       |  |
|  |              |  |                |              | Placing and Packing 3/4                            |                |              | 80%                        |  |

MANPOWER DEMOGRAPHICS

| COMPANY   | POSITION          | HOURS | COUNT |
|-----------|-------------------|-------|-------|
| Nuna East | Superintendent    | 13.0  | 1     |
| Nuna East | Foreman           | 12.0  | 1     |
| Nuna East | Surveyor          | 12.0  | 1     |
| Nuna East | Trainer           | 12.0  | 1     |
| Nuna East | Admin             | 10.0  | 1     |
| Nuna East | Multi Operator    | 48.0  | 4     |
| Nuna East | Loader Operator   | 12.0  | 1     |
| Nuna East | Truck Driver      | 48.0  | 4     |
| Nuna East | Skilled Labourers | 24.0  | 2     |
| Nuna East | Mechanic          | 12.0  | 1     |
| Nuna East |                   | 0.0   | 0     |
| TOTAL     |                   | 203   | 17    |

EQUIPMENT ONSITE

| Description        | Unit     | Op Hrs DS/NS | Status | Comments                 |
|--------------------|----------|--------------|--------|--------------------------|
| Cat 336 Excavator  | 32 65 13 |              | Up     |                          |
| Cat 349 Excavator  | 32 65 08 | 12.0         | Up     |                          |
| Cat 374 Excavator  | 32 65 03 |              | Dn     | Emission Issues          |
| Cat D6 Dozer       | 32 73 09 |              | Up     | Moved from MSC to 104    |
| Cat D6 Dozer       | 32 68 07 | 5.0          | Up     | Down for 2 Hours Leak    |
| Cat D8 Dozer       | 32 73 06 | 8.0          | Up     |                          |
| Cat 980 Loader     | 32 68 06 | 10.0         | Up     | Travelled to 104 Laydown |
| Cat CS56B          | 32 79 01 | 5.0          | Up     |                          |
| Cat 745 Rock Truck | 32 58 03 | 8.0          | Up     | 104 Laydown              |
| Cat 745 Rock Truck | 32 58 08 | 5.0          | Up     |                          |
| Cat 745 Rock Truck | 32 58 09 | 3.0          | Up     |                          |
| Cat 745 Rock Truck | 32 58 19 | 3.0          | Up     |                          |

PROJECT QUANTITIES

| 110KM HD Equipment Shop | Estimated Quantities                | Quantity | Unit | Quantity to date | Daily Total | Total | % Complete |
|-------------------------|-------------------------------------|----------|------|------------------|-------------|-------|------------|
|                         | Excavation                          | 0        | m3   | 0                | 0           | 0     |            |
|                         | LHP 6" to Building Perimeter        | 725      | m3   | 0                | 175         | 175   | 24%        |
|                         | LHP Surfacing to Building Perimeter | 290      | m3   | 0                | 0           | 0     | 0%         |
|                         | Place 6" crush to underside of Slab | 575      | m3   | 763              | 392         | 1155  | 201%       |
|                         | LHP 3/4 Crush to underside of Slab  | 518      | m3   | 293              | 168         | 461   | 89%        |
|                         | Install Insulation                  | 2,300    | m2   | 0                | 0           | 0     | 0%         |
|                         | Grand Total                         |          |      |                  | 735         | 1791  |            |

| WRF Expansion | Estimated Quantities    | Quantity | Unit | Quantity to date | Daily Total | Total  | % Complete |
|---------------|-------------------------|----------|------|------------------|-------------|--------|------------|
|               | Excavation              | 6,750    | m3   | 4360.4           | 219.5       | 4579.9 | 68%        |
|               | Install Geotextile      | 9,750    | m2   | 4815             | 1035        | 5850   | 60%        |
|               | Load LHP 3/4 Water Line | 309      | m3   | 309              | 309         | 309    | 100%       |
|               | LHP Rip Rap             | 2,790    | m3   | 855              | 330         | 1185   | 42%        |
|               | Grand Total             |          |      | 1893.5           | 1193.9      |        |            |

| HD Truck Shop | Estimated Quantities       | Quantity | Unit | Quantity to date | Daily Total | Total | % Complete |
|---------------|----------------------------|----------|------|------------------|-------------|-------|------------|
|               | Excavation                 | 0        | m3   | 0                | 0           | 0     | 0%         |
|               | LHP -ROQ General Fill      | 1,600    | m3   | 0                | 0           | 0     | 0%         |
|               | LHP 6" Transition Material | 1,200    | m3   | 0                | 0           | 0     | 0%         |
|               | LHP 3/4" Crush             | 720      | m3   | 0                | 0           | 0     | 0%         |
|               | Install Insulation         | 1,500    | m2   | 0                | 0           | 0     | 0%         |
|               | Grand Total                |          |      | 0                | 0           | 0     |            |

| KM 105 Pond | Estimated Quantities       | Quantity | Unit | Quantity to date | Daily Total | Total | % Complete |
|-------------|----------------------------|----------|------|------------------|-------------|-------|------------|
|             | Site Prep                  | 1        | LS   | 0                | 0           | 0     |            |
|             | LHP -ROQ                   | 180,000  | m3   | 0                | 0           | 0     | 0%         |
|             | LHP 6" Transition Material | 60,000   | m3   | 0                | 0           | 0     | 0%         |
|             | LHP Crush                  | 60,000   | m3   | 0                | 0           | 0     | 0%         |
|             | Liner Installation         | 1        | LS   | 0                | 0           | 0     | 0%         |
|             | Grand Total                |          |      | 0                | 0           | 0     |            |

| Port Warehouse | Estimated Quantities                 | Quantity | Unit | Quantity to date | Daily Total | Total | % Complete |
|----------------|--------------------------------------|----------|------|------------------|-------------|-------|------------|
|                | LHP 6" Crush to final design lines   | 260      | m3   | 0                | 0           | 0     | 0%         |
|                | LHP 3/4" Crush to final design lines | 1,250    | m3   | 0                | 0           | 0     | 0%         |
|                | Install Insulation                   | 1,638    | m2   | 0                | 0           | 0     | 0%         |
|                | Grand Total                          |          |      | 0                | 0           | 0     |            |
|                |                                      |          |      |                  |             |       |            |

Date: Sunday, August 8, 2021

Working Hours: 6:00am to 6:00am

Job No: CC006

PROJECT PHOTOS





|                | Estimated Quantities                 | Quantity | Unit | Quantity to date | Daily Total | Total | % Complete |
|----------------|--------------------------------------|----------|------|------------------|-------------|-------|------------|
| Port Warehouse | LHP 6" Crush to final design lines   | 260      | m3   | 0                | 0           | 0     |            |
|                | LHP 3/4" Crush to final design lines | 1,250    | m3   | 0                | 0           | 0     | 0%         |
|                | Install Insulation                   | 1,638    | m2   | 0                | 0           | 0     | 0%         |
|                | fixcap T300                          |          |      |                  | 0           | 0     |            |

Date: Monday, August 9, 2021

Working Hours: 6:00am to 6:00am

Job No:

PROJECT PHOTOS



Job No:





Job No:



| MANPOWER DEMOGRAPHICS |                   |           |             |
|-----------------------|-------------------|-----------|-------------|
| COMPANY               | POSITION          | HOURS     | COUNT       |
| Nuna East             | Superintendent    | 0.0       |             |
| Nuna East             | Foremen           | 0.0       |             |
| Nuna East             | Surveyor          | 4.5       | 0.38        |
| Nuna East             | Trainer           | 0.0       |             |
| Nuna East             | Admin             |           |             |
| Nuna East             | Multi Operator    | 23.0      | 1.92        |
| Nuna East             | Loader Operator   | 0.0       |             |
| Nuna East             | Truck Driver      | 6.0       | 0.50        |
| Nuna East             | Skilled Labourers | 24.0      | 2.00        |
| Nuna East             | Mechanic          | 0.0       | 0.00        |
| Nuna East             |                   | 0.0       | 0.00        |
|                       | <b>TOTAL</b>      | <b>58</b> | <b>4.80</b> |

| EQUIPMENT ONSITE   |          |        |        |                                 |
|--------------------|----------|--------|--------|---------------------------------|
| Description        | Unit     | Op Hrs | Status | Comments                        |
|                    |          | D5/NS  |        |                                 |
| Cat 336 Excavator  | 32 65 13 |        | Up     |                                 |
| Cat 349 Excavator  | 32 65 08 |        | Up     |                                 |
| Cat 374 Excavator  | 32 65 03 |        | On     | Emission issues                 |
| Cat 349 Excavator  | 32 65 11 |        | Up     |                                 |
| Cat D6 Dozer       | 32 68 07 | 2.0    | Up     | Anchor Bolt Test                |
| Cat D8 Dozer       | 9.0      | 9.0    | Up     | Placing ROQ on Ring Road        |
| Cat D6 Dozer       | 32 73 09 |        | Up     |                                 |
| Cat 980 Loader     | 32 68 06 | 1.5    | Up     |                                 |
| Cat C556B          | 32 70 01 |        | Up     | Moving material for Anchor Test |
| Cat 745 Rock Truck | 32 58 12 |        | Up     |                                 |
| Cat 745 Rock Truck | 32 58 03 |        | Up     |                                 |
| Cat 745 Rock Truck | 32 58 08 |        | Up     |                                 |
| Cat 745 Rock Truck | 32 58 09 |        | Up     |                                 |
| Cat 745 Rock Truck | 32 58 13 |        | Up     |                                 |

|               | Estimated Quantities    | Quantity | Unit | Quantity to date | Daily Total   | Total          | % Complete |
|---------------|-------------------------|----------|------|------------------|---------------|----------------|------------|
| WRF Expansion | Excavation              | 6,750    | m3   | 4360.4           | 219.5         | 4579.9         | 68%        |
|               | Install Geotextile      | 9,750    | m2   | 4815             | 1035          | 5850           | 60%        |
|               | Load LHP 3/4 Water Line | 309      | m3   | 359              |               | 309            | 100%       |
|               | LHP 600 Bag             | 279      | m3   | 855              | 330           | 1165           | 42%        |
|               | <b>Grand Total</b>      |          |      |                  | <b>1803.5</b> | <b>11923.9</b> |            |

|                | Estimated Quantities                 | Quantity | Unit | Quantity to date | Daily Total | Total | % Complete |
|----------------|--------------------------------------|----------|------|------------------|-------------|-------|------------|
| Port Warehouse | LHP 6" Crush to final design lines   | 260      | m3   | 0                | 0           | 0     | 0%         |
|                | LHP 3/4" Crush to final design lines | 1,250    | m3   | 0                | 0           | 0     | 0%         |
|                | Install Insulation                   | 1,638    | m2   | 0                | 0           | 0     | 0%         |
|                | Grand Total                          |          |      |                  | 0           | 0     |            |

## PROJECT PHOTOS



| PROJECT QUANTITIES      |                                      |          |      |                  |             |         |            |
|-------------------------|--------------------------------------|----------|------|------------------|-------------|---------|------------|
|                         | Estimated Quantities                 | Quantity | Unit | Quantity to date | Daily Total | Total   | % Complete |
| 110KM HD Equipment Shop | Excavation                           | 0        | m3   | 0                | 0           | 0       |            |
|                         | LHP 6" to Building Perimeter         | 725      | m3   | 175              | 240         | 415     | 57%        |
|                         | LWP Surfacing to Building Perimeter  | 290      | m3   | 0                | 0           | 0       | 0%         |
|                         | Place 6" Crush to underside of Slab  | 579      | m3   | 768              | 392         | 1555    | 267%       |
|                         | LWP 3/4" Crush to underside of Slab  | 518      | m3   | 461              | 392         | 853     | 165%       |
|                         | Install Insulation                   | 2,300    | m2   | 0                | 0           | 0       | 0%         |
|                         | Grand Total                          |          |      |                  | 1024        | 2423    |            |
|                         |                                      |          |      |                  |             |         |            |
| WRF Expansion           | Excavation                           | 6,750    | m3   | 4360.0           | 219.5       | 4579.5  | 66%        |
|                         | Install Concrete                     | 5,750    | m2   | 4815             | 1035        | 5850    | 40%        |
|                         | Load LHP 3/4" Water Line             | 809      | m3   | 809              | 809         | 1609    | 100%       |
|                         | LHP Rip Rap                          | 2,790    | m3   | 855              | 930         | 1185    | 42%        |
|                         | Grand Total                          |          |      |                  | 1893.5      | 11923.5 |            |
|                         |                                      |          |      |                  |             |         |            |
|                         |                                      |          |      |                  |             |         |            |
|                         |                                      |          |      |                  |             |         |            |
| Port Warehouse          | Estimated Quantities                 | Quantity | Unit | Quantity to date | Daily Total | Total   | % Complete |
|                         | LWP 6" Crush to final design lines   | 0        | m3   | 0                | 0           | 0       |            |
|                         | LWP 3/4" Crush to final design lines | 1,250    | m3   | 0                | 0           | 0       | 0%         |
|                         | Install Insulation                   | 1,638    | m2   | 0                | 0           | 0       | 0%         |
|                         | Grand Total                          |          |      |                  | 0           | 0       |            |
|                         |                                      |          |      |                  |             |         |            |

## A collage of eight photographs showing various stages of a construction or mining project. The images depict heavy machinery like excavators and dump trucks working on muddy, reddish-brown terrain. Some images show large piles of rocks or debris, while others show wide, flat areas of cleared land. The sky is consistently overcast and grey.

| PROJECT QUANTITIES                   |                                     |                      |          |                  |                  |             |               |
|--------------------------------------|-------------------------------------|----------------------|----------|------------------|------------------|-------------|---------------|
| 110KM HD<br>Equipment Shop           | Estimated Quantities                | Quantity             | Unit     | Quantity to date | Daily Total      | Total       | %<br>Complete |
|                                      | Excavation                          | 0                    | m3       | 0                | 0                | 0           |               |
|                                      | LWP 6" to Building Perimeter        | 725                  | m3       | 175              | 240              | 415         | 57%           |
|                                      | LWP Surfacing to Building Perimeter | 290                  | m3       | 0                | 0                | 0           | 0%            |
|                                      | Place 6" Crush to underside of Slab | 575                  | m3       | 769              | 392              | 1,555       | 201%          |
|                                      | LWP 3/4 Crush to underside of Slab  | 518                  | m3       | 853              | 190              | 1,013       | 196%          |
|                                      | Install Insulation                  | 2,300                | m2       | 0                | 0                | 0           | 0%            |
|                                      | Grand Total                         |                      |          |                  | 792              | 2583        |               |
| WWF Expansion                        | Estimated Quantities                | Quantity             | Unit     | Quantity to date | Daily Total      | Total       | %<br>Complete |
|                                      | Excavation                          | 6,750                | m3       | 4360.4           | 219.5            | 4579.9      | 68%           |
|                                      | Install Concrete                    | 9,750                | m2       | 4815             | 1035             | 5850        | 60%           |
|                                      | Load LWP LWP 3/4 Water Line         | 809                  | m3       | 309              | 309              | 599         | 100%          |
|                                      | LWP Rip Rap                         | 2,790                | m3       | 855              | 330              | 1,185       | 42%           |
|                                      | Grand Total                         |                      |          |                  | 1893.5           | 11923.9     |               |
|                                      | Port Warehouse                      | Estimated Quantities | Quantity | Unit             | Quantity to date | Daily Total | Total         |
| LWP 6" Crush to final design lines   |                                     | 1,250                | m3       | 0                | 0                | 0           |               |
| LWP 3/4" Crush to final design lines |                                     | 1,250                | m3       | 0                | 0                | 0           | 0%            |
| Install Insulation                   |                                     | 1,638                | m2       | 0                | 0                | 0           | 0%            |
| Grand Total                          |                                     |                      |          |                  | 0                | 0           |               |



Job No:



| DESCRIPTION OF INCIDENTS |                                 |
|--------------------------|---------------------------------|
| Shift                    | Toolbox Topic                   |
| Days                     | Creating a respectful workplace |

| DAILY ACTIVITIES COMPLETED   |
|--|
| Worked on Ring Road and tie in between old and new road, blocked old road access and linked new to existing ditch. Survey grade. |

| PLANNED ACTIVITIES FOR NEXT DAY             |  |
|---|--|
| Prepare WRF Ditch for geotextile and Riprap |  |

| CONTRACTOR REMARKS |  |
|--------------------|--|
|                    |  |

| MANPOWER DEMOGRAPHICS |                |       |       |
|-----------------------|----------------|-------|-------|
| COMPANY               | POSITION       | HOURS | COUNT |
| Nuna East             | Superintendent | 0.0   |       |

| EQUIPMENT ONSITE   |          |                  |        |                      |
|--------------------|----------|------------------|--------|----------------------|
| Description        | Unit     | Op Hrs<br>6/6/05 | Status | Comments             |
| Cat 336 Excavator  | 12 05 13 | 10.0             | Up     |                      |
| Cat 349 Excavator  | 12 05 08 |                  | Up     | Going in for PM      |
| Cat 322 Excavator  | 12 05 03 |                  | Up     | Emulsion leaks       |
| Cat 349 Excavator  | 12 05 11 |                  | Up     |                      |
| Cat 349 Excavator  | 12 05 05 |                  | Up     | Moved to Tarmat Shop |
| Cat D6 Dozer       | 12 08 07 |                  | Up     |                      |
| Cat D6 Dozer       | 12 73 06 | 7.0              | Up     |                      |
| Cat D6 Dozer       | 12 73 09 |                  | Up     |                      |
| Cat 980 Loader     | 12 08 06 |                  | Up     |                      |
| Cat C558B          | 12 79 03 |                  | Up     |                      |
| Cat 745 Rock Truck | 12 58 16 |                  | Up     |                      |
| Cat 745 Rock Truck | 12 58 21 |                  | Up     |                      |
| Cat 745 Rock Truck | 12 58 12 |                  | Up     |                      |
| Cat 745 Rock Truck | 12 58 05 |                  | Up     |                      |
| Cat 745 Rock Truck | 12 58 08 |                  | Up     |                      |
| Cat 745 Rock Truck | 12 58 09 |                  | Up     |                      |
| Cat 745 Rock Truck | 12 58 12 |                  | Up     |                      |

|               | Estimated Quantities    | Quantity | Unit | Quantity to date | Daily Total | Total  | % Complete |
|---------------|-------------------------|----------|------|------------------|-------------|--------|------------|
| WRF Expansion | Excavation              | 6,750    | m3   | 4580             | 321.6       | 4901.6 | 73%        |
|               | Install Geotextile      | 9,750    | m2   | 4815             | 1035        | 5850   | 60%        |
|               | Load LHP 3/4 Water Line | 300      | m3   | 309              | 309         | 309    | 100%       |
|               | LHP Rip Rep             | 270      | m3   | 855              |             | 1185   | 42%        |
|               | Grand Total             |          |      |                  |             | 1595.6 | 12245.6    |

|                | Estimated Quantities                 | Quantity | Unit | Quantity to date | Daily Total | Total | % Complete |
|----------------|--------------------------------------|----------|------|------------------|-------------|-------|------------|
| Port Warehouse | LHP 6" Crush to final design lines   | 260      | m3   | 0                | 0           | 0     |            |
|                | LHP 3/4" Crush to final design lines | 1,250    | m3   | 0                | 0           | 0     | 0%         |
|                | Install Insulation                   | 1,638    | m2   | 0                | 0           | 0     | 0%         |
|                | <b>Grand Total</b>                   |          |      |                  | 0           | 0     |            |

## PROJECT PHOTOS



Job No:







Job No:

D[illegible]

| EQUIPMENT ONSITE   |          |                  |        |                 |
|--------------------|----------|------------------|--------|-----------------|
| Description        | Unit     | Op Hrs<br>6/2/16 | Status | Comments        |
| Cat 336 Excavator  | 32 05 13 |                  | Up     |                 |
| Cat 344 Excavator  | 32 05 08 |                  | Up     |                 |
| Cat 322 Excavator  | 32 05 03 |                  | Up     | Emission Issues |
| Cat 349 Excavator  | 32 05 11 |                  | Up     |                 |
| Cat 343 Excavator  | 32 05 05 |                  | Up     | Has Horn Issue  |
| Cat D6 Dozer       | 32 08 07 |                  | Up     |                 |
| Cat D6 Dozer       | 32 73 06 |                  | Up     |                 |
| Cat D6 Dozer       | 32 73 09 |                  | Up     |                 |
| Cat 980 Loader     | 32 08 06 |                  | Up     |                 |
| Cat C508B          | 32 79 01 |                  | Up     |                 |
| Cat 743 Rock Truck | 32 58 16 |                  | Up     |                 |
| Cat 743 Rock Truck | 32 58 21 |                  | Up     |                 |
| Cat 743 Rock Truck | 32 58 12 |                  | Up     |                 |
| Cat 743 Rock Truck | 32 58 01 |                  | Up     |                 |
| Cat 743 Rock Truck | 32 58 08 |                  | Up     |                 |
| Cat 743 Rock Truck | 32 58 09 |                  | Up     |                 |
| Cat 743 Rock Truck | 32 58 12 |                  | Up     |                 |

|               | Estimated Quantities    | Quantity | Unit | Quantity to date | Daily Total | Total         | % Complete     |
|---------------|-------------------------|----------|------|------------------|-------------|---------------|----------------|
| WRF Expansion | Excavation              | 6,750    | m3   | 4580             | 321.6       | 4901.6        | 73%            |
|               | Install Geotextile      | 9,750    | m2   | 4815             | 1035        | 5850          | 60%            |
|               | Load LHP 3/4 Water Line | 300      | m3   | 309              | 309         | 309           | 100%           |
|               | LHP Rip Rep             | 279      | m3   | 855              |             | 1185          | 42%            |
|               | <b>Grand Total</b>      |          |      |                  |             | <b>1595.6</b> | <b>12245.6</b> |

## PROJECT PHOTOS



Job No:

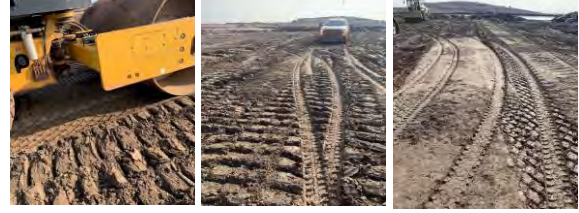


|  |   |
|--|---|
| TOTAL REPORTABLE ACCIDENT FREQUENCY RATE | 0 |
| LOST TIME ACCIDENT FREQUENCY RATE        | 0 |

| PLANNED ACTIVITIES FOR NEXT DAY |  |
|---------------------------------|--|
| 3/4"                            | is still muddy, plan to add dry 3/4" to aide in the drying process |

\_\_\_\_\_

|               | Estimated Quantities        | Quantity | Unit | Quantity to date | Daily Total | Total          | % Completed |
|---------------|-----------------------------|----------|------|------------------|-------------|----------------|-------------|
| WRF Expansion | Excavation                  | 6,750    | m3   | 4580             | 321.6       | 4901.6         | 73%         |
|               | Install Geotextile          | 9,750    | m2   | 4815             | 1035        | 5850           | 60%         |
|               | Install LWP 3/4" Water Line | 309      | m    | 309              | 309         | 309            | 100%        |
|               | LWP Riser Box               | 2,790    | m3   | 855              | 330         | 1185           | 43%         |
|               | <b>Grand Total</b>          |          |      |                  | 1995.6      | <b>12245.6</b> |             |



| EQUIPMENT ONSITE   |          |                  |        |                 |
|--------------------|----------|------------------|--------|-----------------|
| Description        | Unit     | Op Hrs<br>90 Hrs | Status | Comments        |
| Cat 335 Excavator  | 12 65 13 | 8.0              | Up     | Management 3/4" |
| Cat 349 Excavator  | 12 65 08 |                  | Up     | Management 3/4" |
| Cat 335 Excavator  | 12 65 03 |                  | Up     | Emission Issues |
| Cat 349 Excavator  | 12 65 11 |                  | Up     |                 |
| Cat 349 Excavator  | 12 65 05 |                  | Up     |                 |
| Cat DE Dozer       | 12 73 07 | 8.0              | Up     | Management 3/4" |
| Cat DE Dozer       | 12 73 06 |                  | Up     |                 |
| Cat DE Dozer       | 12 73 09 |                  | Up     |                 |
| Cat 980 Loader     | 12 68 06 | 3.0              | Up     | loading 3/4"    |
| Cat 550B           | 12 79 01 |                  | Up     |                 |
| Cat 745 Rock Truck | 12 58 16 |                  | Up     |                 |
| Cat 745 Rock Truck | 12 58 21 |                  | Up     |                 |
| Cat 745 Rock Truck | 12 58 12 | 8.0              | Up     | Exhaust leak    |
| Cat 745 Rock Truck | 12 58 09 |                  | Up     |                 |
| Cat 745 Rock Truck | 12 58 08 |                  | Up     |                 |
| Cat 745 Rock Truck | 12 58 09 |                  | Up     |                 |
| Cat 745 Rock Truck | 12 58 12 | 8.0              | Up     | Hydraulic 3/4"  |

## PROJECT PHOTOS



A photograph showing construction workers in orange safety gear standing on a muddy beach, with a yellow excavator in the background.



BAFFINLAND IRON MINES  
BIM Sustainability  
DAILY REPORT



Date: Wednesday, August 25, 2021

Working Hours: 6:00am to 6:00am

Job No:



| Project to Date | First Aid | Medical Aid | Property Damage | Equipment Damage | Environmental Release | Fire | Vehicle / Equipment Incident (Moving) | Project Total | Near Misses | Hazard ID Cards |
|-----------------|-----------|-------------|-----------------|------------------|-----------------------|------|---------------------------------------|---------------|-------------|-----------------|
|                 | 0         | 0           | 0               | 0                | 0                     | 0    | 0                                     | 0             | 0           | 0               |

DESCRIPTION OF INCIDENTS

Shift: Toolbox Topic

Days: When is a JHA Required

|  |   |
|--|---|
| TOTAL REPORTABLE ACCIDENT FREQUENCY RATE | 0 |
| LOST TIME ACCIDENT FREQUENCY RATE        | 0 |

DAILY ACTIVITIES COMPLETED

Geotextile and rip rap

PLANNED ACTIVITIES FOR NEXT DAY

continue geotextile and rip rap

CONTRACTOR REMARKS

Excavator broke down for 7 hours due to DEF issues

PROJECT PROGRESS

| Waste Rock Facility Expansion West Perimeter Ditch |              |  |                |              | Waste Rock Facility Expansion East Perimeter Ditch |                |              |                           |
|--|--------------|--|----------------|--------------|--|----------------|--------------|---------------------------|
| Station Number                                     | Ditch Status | Comments                               | Station Number | Ditch Status | Comments   | Station Number | Ditch Status | Comments                  |
| 0+438 - 0+450                                      | 100%         | Geotextile and riprap placed to grade. | 0+775 - 0+800  | 100%         | Geotextile and riprap placed to grade.             | 0+683 - 0+700  | 60%          | Ditch bottom cut to grade |
| 0+450 - 0+475                                      | 100%         | Geotextile and riprap placed to grade. | 0+800 - 0+825  | 100%         | Geotextile and riprap placed to grade.             | 0+700 - 0+725  | 60%          | Ditch bottom cut to grade |
| 0+475 - 0+500                                      | 100%         | Geotextile and riprap placed to grade. | 0+825 - 0+850  | 100%         | Geotextile and riprap placed to grade.             | 0+725 - 0+750  | 60%          | Ditch bottom cut to grade |
| 0+500 - 0+525                                      | 100%         | Geotextile and riprap placed to grade. | 0+850 - 0+875  | 100%         | Geotextile and riprap placed to grade.             | 0+750 - 0+775  | 60%          | Ditch bottom cut to grade |
| 0+525 - 0+550                                      | 100%         | Geotextile and riprap placed to grade. | 0+875 - 0+900  | 100%         | Geotextile and riprap placed to grade.             | 0+775 - 0+800  | 60%          | Ditch bottom cut to grade |
| 0+550 - 0+575                                      | 100%         | Geotextile and riprap placed to grade. | 0+900 - 0+925  | 100%         | Geotextile and riprap placed to grade.             | 0+800 - 0+825  | 60%          | Ditch bottom cut to grade |
| 0+575 - 0+600                                      | 100%         | Geotextile and riprap placed to grade. | 0+925 - 0+950  | 100%         | Geotextile and riprap placed to grade.             | 0+825 - 0+850  | 60%          | Ditch bottom cut to grade |
| 0+600 - 0+625                                      | 100%         | Geotextile and riprap placed to grade. | 0+950 - 0+975  | 100%         | Geotextile and riprap placed to grade.             | 0+850 - 0+875  | 60%          | Ditch bottom cut to grade |
| 0+625 - 0+650                                      | 100%         | Geotextile and riprap placed to grade. | 0+975 - 1+000  | 100%         | Geotextile and riprap placed to grade.             | 0+875 - 0+900  | 60%          | Ditch bottom cut to grade |
| 0+650 - 0+675                                      | 100%         | Geotextile and riprap placed to grade. | 1+000 - 1+025  | 100%         | Geotextile and riprap placed to grade.             | 0+900 - 0+925  | 60%          | Ditch bottom cut to grade |
| 0+675 - 0+700                                      | 100%         | Geotextile and riprap placed to grade. | 1+025 - 1+050  | 100%         | Geotextile and riprap placed to grade.             | 0+925 - 0+950  | 60%          | Ditch bottom cut to grade |
| 0+700 - 0+725                                      | 100%         | Geotextile and riprap placed to grade. | 1+050 - 1+075  | 100%         | Geotextile and riprap placed to grade.             | 0+950 - 0+975  | 60%          | Ditch bottom cut to grade |
| 0+725 - 0+750                                      | 100%         | Geotextile and riprap placed to grade. | 1+075 - 1+081  | 100%         | Geotextile and riprap placed to grade.             | 0+975 - 1+000  | 60%          | Ditch bottom cut to grade |
| 0+750 - 0+775                                      | 100%         | Geotextile and riprap placed to grade. |                |              |  | 1+000 - 1+025  | 60%          | Ditch bottom cut to grade |
|  |              |  |                |              |  | 1+025 - 1+050  | 60%          | Ditch bottom cut to grade |
|  |              |  |                |              |  | 1+050 - 1+066  | 60%          | Ditch bottom cut to grade |
| 110 HD Skip Pvd                                    |              |  |                |              |  |                |              |                           |
| Subgrade Excavation                                |              |  |                |              |  |                | 100%         |                           |
| Placing and Packing 6 inch                         |              |  |                |              |  |                | 100%         |                           |
| Placing and Packing 3/4                            |              |  |                |              |  |                | 80%          |                           |

| MANPOWER DEMOGRAPHICS |                   |       |       | EQUIPMENT ONSITE   |          |              |        |
|-----------------------|-------------------|-------|-------|--------------------|----------|--------------|--------|
| COMPANY               | POSITION          | HOURS | COUNT | Description        | Unit     | Op Hrs DS/NS | Status |
| Nuna East             | Superintendent    | 0.0   |       | Cat 336 Excavator  | 32 65 13 |              | Up     |
| Nuna East             | Foreman           | 12.0  | 1.00  | Cat 349 Excavator  | 32 65 08 |              | Up     |
| Nuna East             | Surveyor          | 0.0   |       | Cat 374 Excavator  | 32 65 03 |              | Dn     |
|                       |                   |       |       | Cat 349 Excavator  | 32 65 11 |              | Up     |
|                       |                   |       |       | Cat 349 Excavator  | 32 65 05 |              | Up     |
| Nuna East             | Trainer           | 0.0   |       | Cat D6 Dozer       | 32 73 07 |              | Up     |
| Nuna East             | Admin             | 0.0   |       | Cat D8 Dozer       | 32 73 06 |              | Up     |
| Nuna East             | Multi Operator    | 84.0  | 7.00  | Cat D6 Dozer       | 32 73 09 |              | Up     |
| Nuna East             | Loader Operator   | 0.0   |       | Cat 980 Loader     | 32 68 06 |              | Up     |
| Nuna East             | Truck Driver      | 0.0   |       | Cat C5568          | 32 79 01 |              | Up     |
|                       |                   |       |       | Cat 745 Rock Truck | 32 58 16 |              | Up     |
|                       |                   |       |       | Cat 745 Rock Truck | 32 58 21 |              | Dn     |
|                       |                   |       |       | Cat 745 Rock Truck | 32 58 12 |              | Up     |
|                       |                   |       |       | Cat 745 Rock Truck | 32 58 03 |              | Up     |
|                       |                   |       |       | Cat 745 Rock Truck | 32 58 08 |              | Up     |
|                       |                   |       |       | Cat 745 Rock Truck | 32 58 09 |              | Up     |
|                       |                   |       |       | Cat 745 Rock Truck | 32 58 19 |              | Up     |
| Nuna East             | Skilled Labourers | 0.0   |       |                    |          |              |        |
| Nuna East             | Mechanic          | 0.0   |       |                    |          |              |        |
| Nuna East             |                   | 0.0   |       |                    |          |              |        |
| TOTAL                 |                   | 96    | 8.00  |                    |          |              |        |

PROJECT QUANTITIES

|               | Estimated Quantities    | Quantity | Unit | Quantity to date | Daily Total | Total | % Complete |
|---------------|-------------------------|----------|------|------------------|-------------|-------|------------|
| WRF Expansion | Excavation              | 6,750    | m3   | 4580             | 0           | 4580  | 68%        |
|               | Install Geotextile      | 9,750    | m2   | 4815             | 1260        | 6075  | 62%        |
|               | Load LHP 3/4 Water Line | 309      | m3   | 309              | 0           | 309   | 100%       |
|               | LHP Rip Rap             | 2,790    | m3   | 855              | 0           | 1185  | 42%        |
|               | Grand Total             |          |      |                  | 1260        | 12149 |            |

PROJECT PHOTOS

Job No:

Job No:



| MANPOWER DEMOGRAPHICS |                   |            |              |
|-----------------------|-------------------|------------|--------------|
| COMPANY               | POSITION          | HOURS      | COUNT        |
| Nuna East             | Superintendent    | 6.5        | 0.50         |
| Nuna East             | Foreman           | 12.0       | 1.00         |
| Nuna East             | Surveyor          | 0.0        |              |
| Nuna East             | Trainer           | 0.0        |              |
| Nuna East             | Admin             | 0.0        |              |
| Nuna East             | Multi Operator    | 96.0       | 8.00         |
| Nuna East             | Loader Operator   | 0.0        |              |
| Nuna East             | Truck Driver      | 36.0       | 3.00         |
| Nuna East             | Skilled Labourers | 24.0       | 2.00         |
| Nuna East             | Mechanic          | 0.0        |              |
| Nuna East             |                   | 0.0        |              |
|                       | <b>TOTAL</b>      | <b>176</b> | <b>14.50</b> |

| EQUIPMENT ONSITE   |          |        |        |          |
|--------------------|----------|--------|--------|----------|
| Description        | Unit     | Op Hrs | Status | Comments |
|                    |          | DS/NS  |        |          |
| Cat 336 Excavator  | 32 65 13 |        | Up     |          |
| Cat 349 Excavator  | 32 65 08 |        | Up     |          |
| Cat 374 Excavator  | 32 65 03 |        | Dn     |          |
| Cat 349 Excavator  | 32 65 11 | 14.0   | Up     |          |
| Cat 349 Excavator  | 32 65 05 |        | Up     |          |
| Cat D6 Dozer       | 32 73 07 |        | Up     |          |
| Cat D6 Dozer       | 32 73 06 |        | Up     |          |
| Cat D6 Dozer       | 32 73 09 |        | Up     |          |
| Cat 980 Loader     | 32 68 06 | 4.0    | Up     |          |
| Cat C558B          | 32 79 01 |        | Up     |          |
| Cat 745 Rock Truck | 32 58 16 |        | Up     |          |
| Cat 745 Rock Truck | 32 58 21 |        | Dn     |          |
| Cat 745 Rock Truck | 32 58 12 |        | Up     |          |
| Cat 745 Rock Truck | 32 58 03 | 8.5    | Up     |          |
| Cat 745 Rock Truck | 32 58 08 |        | Up     |          |
| Cat 745 Rock Truck | 32 58 09 |        | Up     |          |
| Cat 745 Rock Truck | 32 58 28 | 8.5    | Up     |          |

## PROJECT QUANTITIES

|               | Estimated Quantities    | Quantity | Unit | Quantity to date | Daily Total | Total        | % Complete |
|---------------|-------------------------|----------|------|------------------|-------------|--------------|------------|
| WRF Expansion | Excavation              | 6,750    | m3   | 4580             | 0           | 4580         | 68%        |
|               | Install Geotextile      | 9,750    | m2   | 6075             | 305         | 6380         | 65%        |
|               | Load LHP 3/4 Water Line | 3,309    | m3   | 309              | 0           | 309          | 100%       |
|               | LHP Rip Rap             | 299      | m3   | 855              | 1070        | 1070         | 37%        |
|               | <b>Grand Total</b>      |          |      |                  | <b>475</b>  | <b>12294</b> |            |

## PROJECT PHOTOS

