



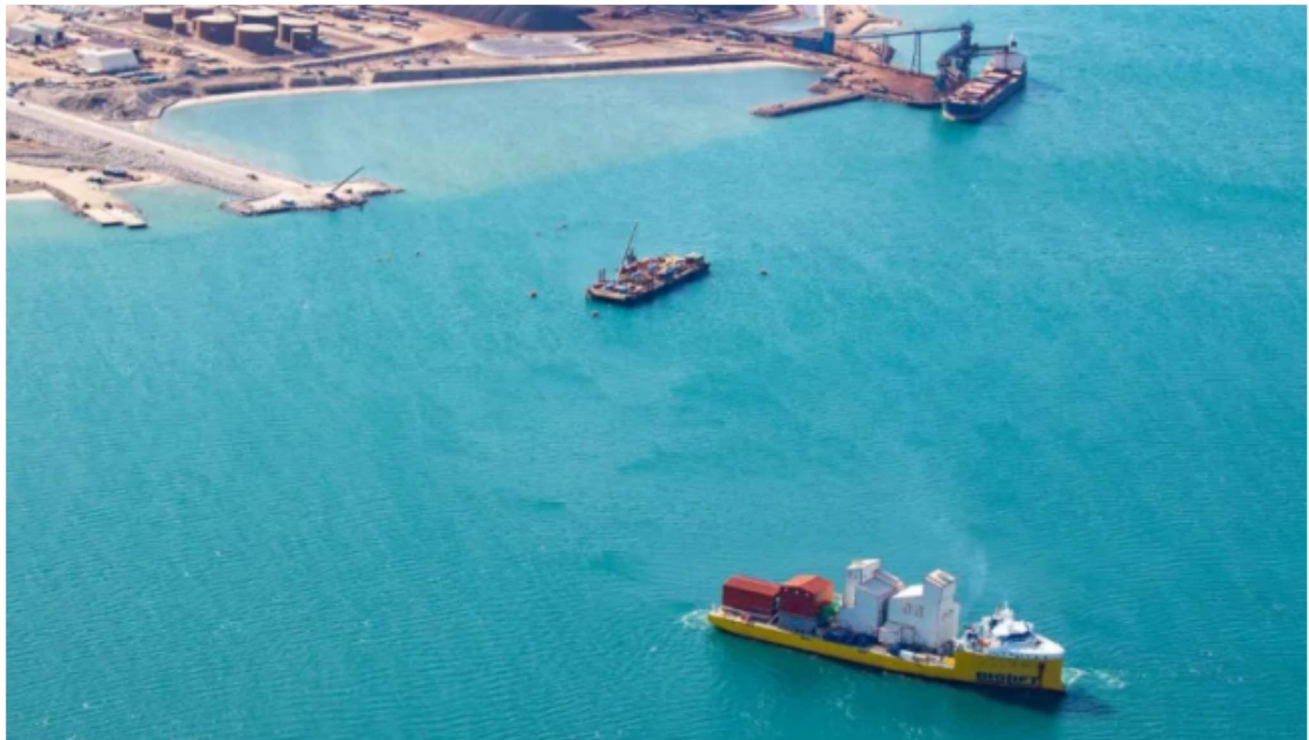
Baffinland Iron Mines Corporation

August 23, 2021
Project #: TC190307.2021

Annual Geotechnical Inspections – 2021 Report 1.

APPENDIX "B" – Milne Port Site - Photographs

Figure 41 to Figure 70



Milne Port – Source: Baffinland

Table of Contents

	Page
1.1 Hazardous Waste-Cell Berms - (HWB-1 to HWB-4)	3
1.2 MP-01A Pond.....	5
1.3 MP-03 Fuel Tank Farm	6
1.4 MP-04 and 04A Landfarm and Contaminated Snow Disposal Cell	6
1.5 Surface Water Collection Ponds and Ditches (Pond #3, MP-05, and MP-06 Settling Ponds).....	7
1.6 Q01 rock quarry.....	11
1.7 Surface Water Collection Ditches (P-SWD-3, P-SWD-5, P-SWD-6, P-SWD-7, W3/W14, 380M, and PSC Ditches) ...	12
1.8 Tote Road Ditch and Culverts.....	17

Milne Inlet Port Site

1.1 Hazardous Waste-Cell Berms - (HWB-1 to HWB-4)

a) HWB-1



Figure 41: View of the practically empty HWB-1 cell with upgraded (regraded) cell floor.



Figure 42: View of the back of the HWB-1 cell, with ponding water and upgraded (regraded) cell floor.

b) HWB-2



Figure 43: View of the former HWB-2 cell, with only empty containers stored on the top of clean sand and gravel fill pad. No hazardous waste is stored in this cell.

c) HWB-3 and HWB-4 Twin Cells



Figure 44: View of the HWB-3 and HWB-4 cells, containing fuel barrels and two shipping containers.



Figure 45: Stable berms around and ponding water within the HWB-3 and HWB-4 cells.

1.2 MP-01A Pond



Figure 46: Berms and liner in good condition with stable slopes around the MP-01A pond. The waste (soil and wood), shown in one corner of the pond, should be removed (yellow circle).

1.3 MP-03 Fuel Tank Farm



Figure 47: View of the well maintained MP-03 fuel tank farm (ponding melted snow at deep areas).

1.4 MP-04 and 04A Landfarm and Contaminated Snow Disposal Cell

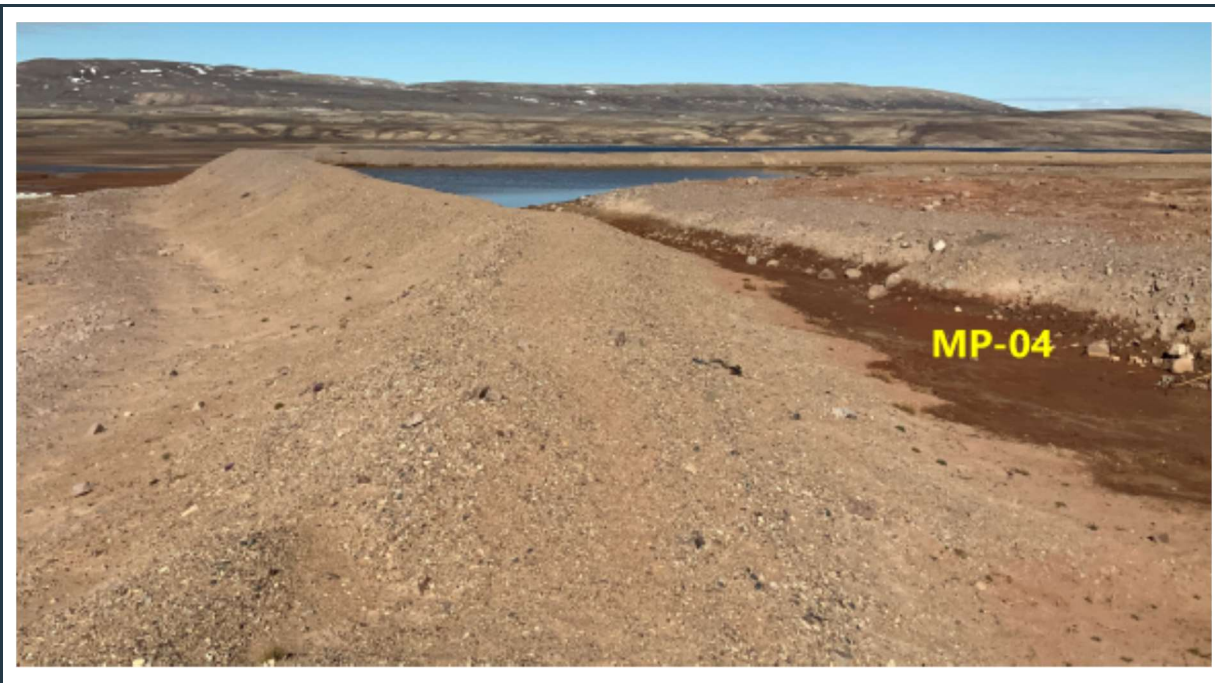


Figure 48: View of stable berm around the MP-04 landfarm. Note the ponding water and the stored waste, covered with soil fill within the cell.



Figure 49: View of the MP-04A cell with stable berms and ponding melted snow.

1.5 Surface Water Collection Ponds and Ditches (Pond #3, MP-05, and MP-06 Settling Ponds)

a) Settling Pond #3

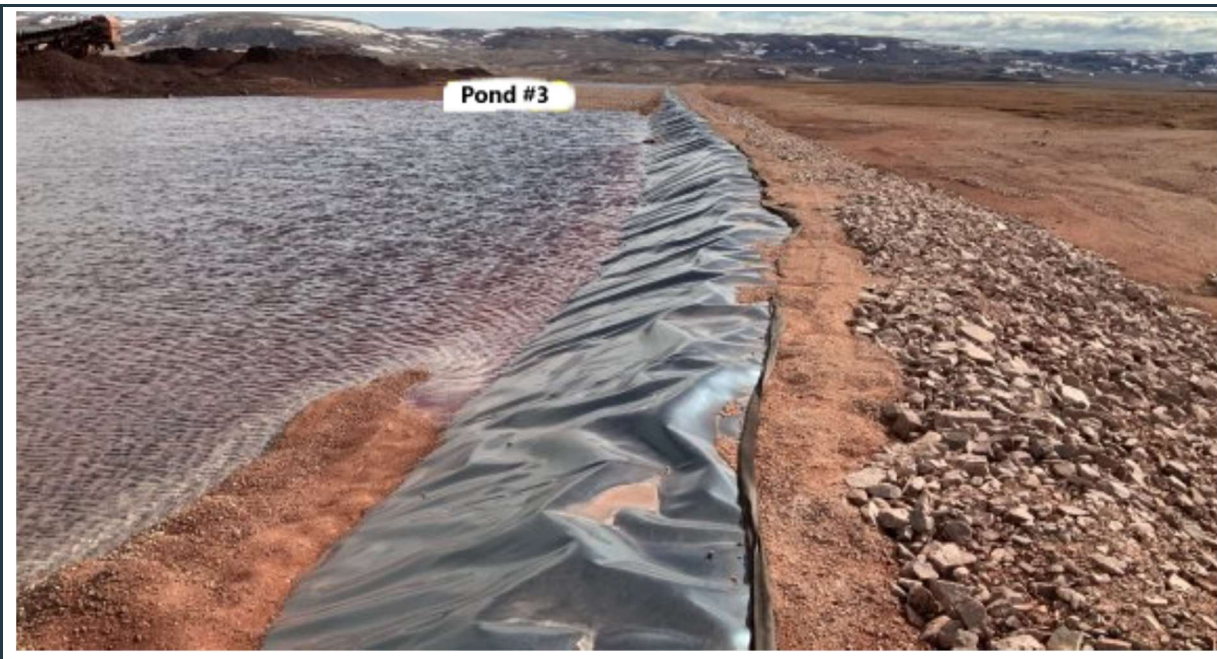


Figure 50: View of the lined, stable berm along the west side of settling pond #3.

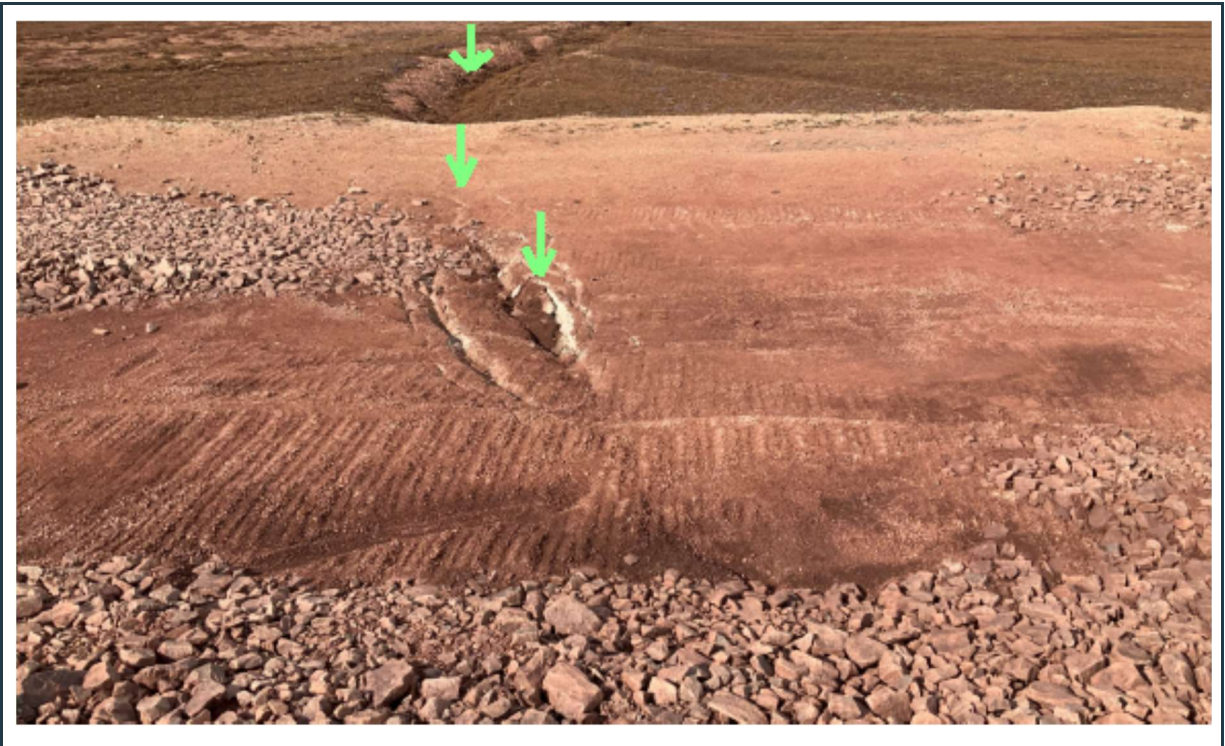


Figure 51: Cracking on the surface along a few historic depressions adjacent to the berm of pond #3.

b) MP-05 Settling Pond

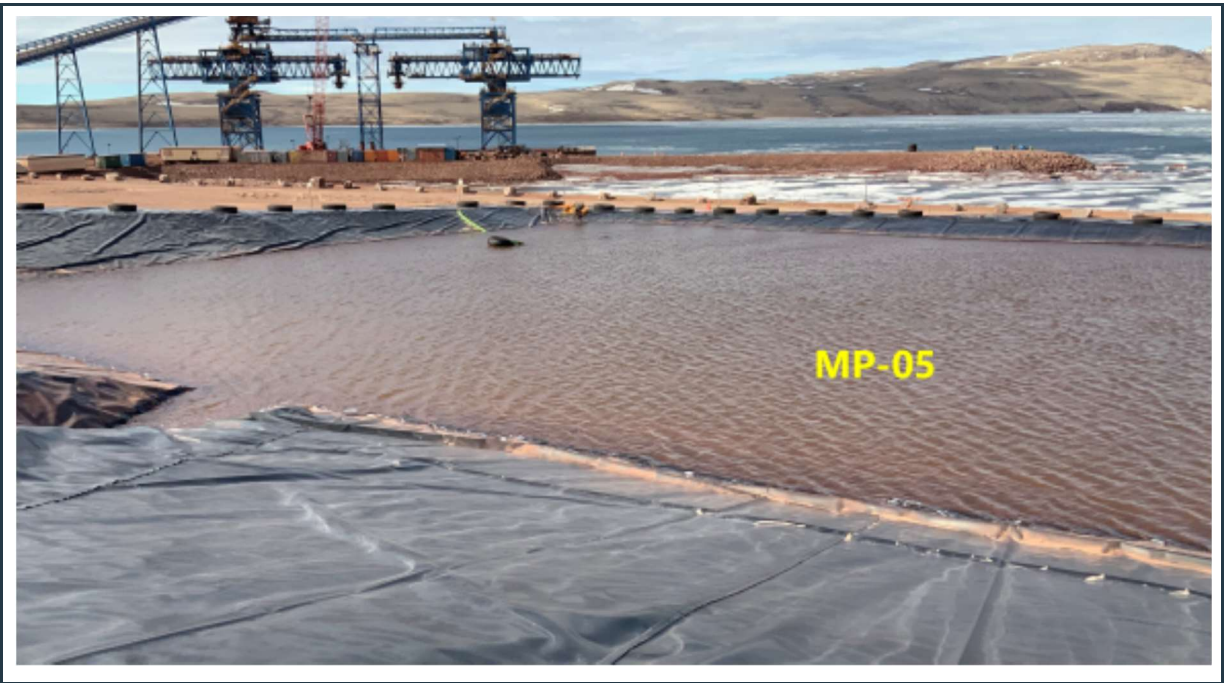


Figure 52: View of the stable berms and intact liner at the MP-05 settling pond (east of shiploader).



Figure 53: Some recent liner damage on the west slope of the southern intake channel.



Figure 54: Surface water collection ditch adjacent (east) to the ore storage, draining to the MP-05 pond.

c) MP-06 Settling Pond



Figure 55: View of the lined MP-06 pond with robust, stable berms (north-west corner of the ore stockpile). Note the repaired liner on the slope of the intake to the pond (yellow circle).



Figure 56: View of the east slope of the lined MP-06, with increased soil erosion from the adjacent berm.

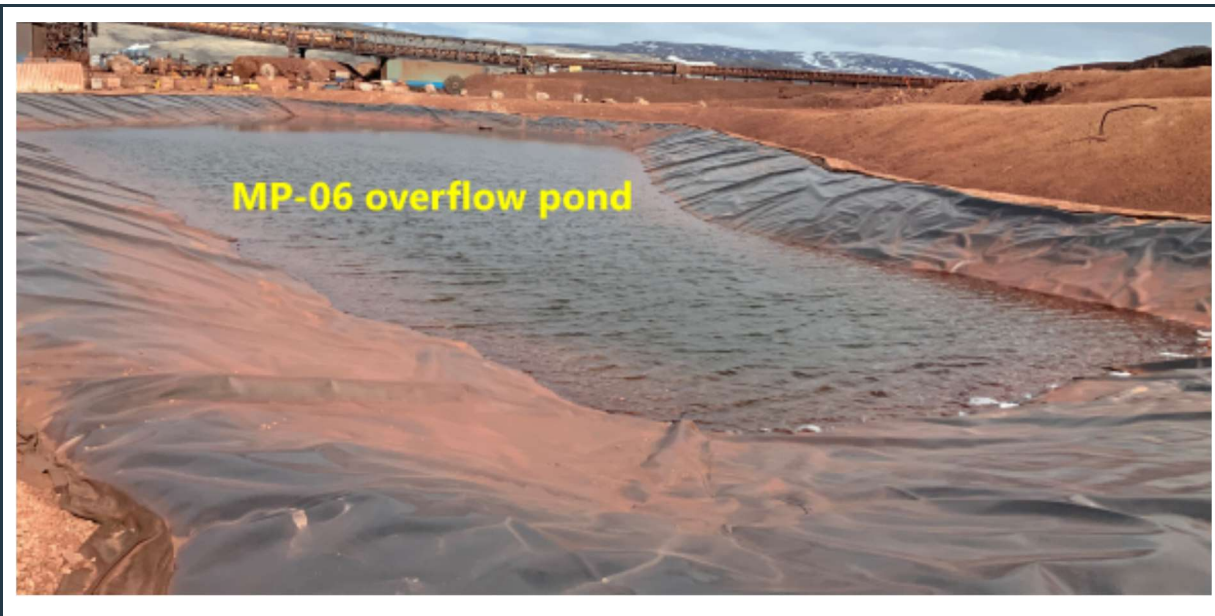


Figure 57: View of the lined MP-06 overflow pond, with stable berms.

1.6 Q01 rock quarry



Figure 58: View of stable highwalls with minor weathering and bench erosion in the Q01 rock quarry.
Note the accumulated snow on the top of the benches.

1.7 Surface Water Collection Ditches (P-SWD-3, P-SWD-5, P-SWD-6, P-SWD-7, W3/W14, 380M, and PSC Ditches)

a) P-SWD-3 (south side of the LP2 laydown area)

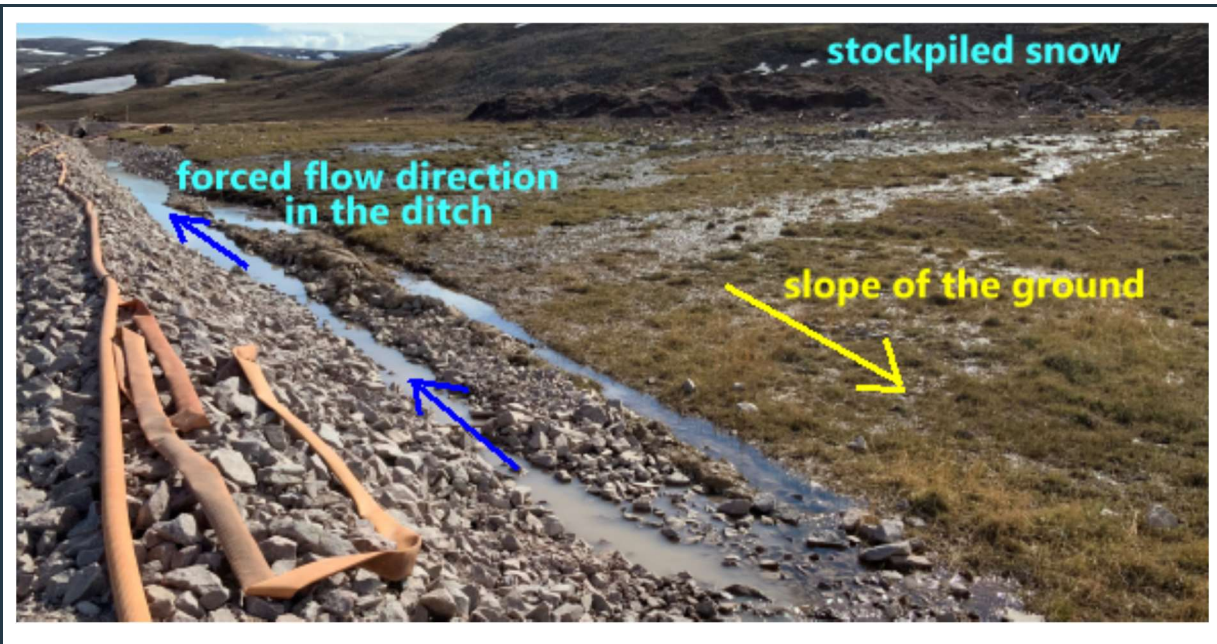


Figure 59: View of the "P-SWD-3 surface water collection ditch with failing side slope. The sloughing is caused by the uncontrolled water flow into the ditch along its alignment.



Figure 60: Continuous sheet flow of surface water from the snow stockpile area.

b) P-SWD-5 (next to the Q01 rock quarry)



Figure 61: P-SWD-5 – “Q01-North” surface water collection ditch with missing riprap at a short section.

c) P-SWD-6 (south of the Q01 rock quarry)

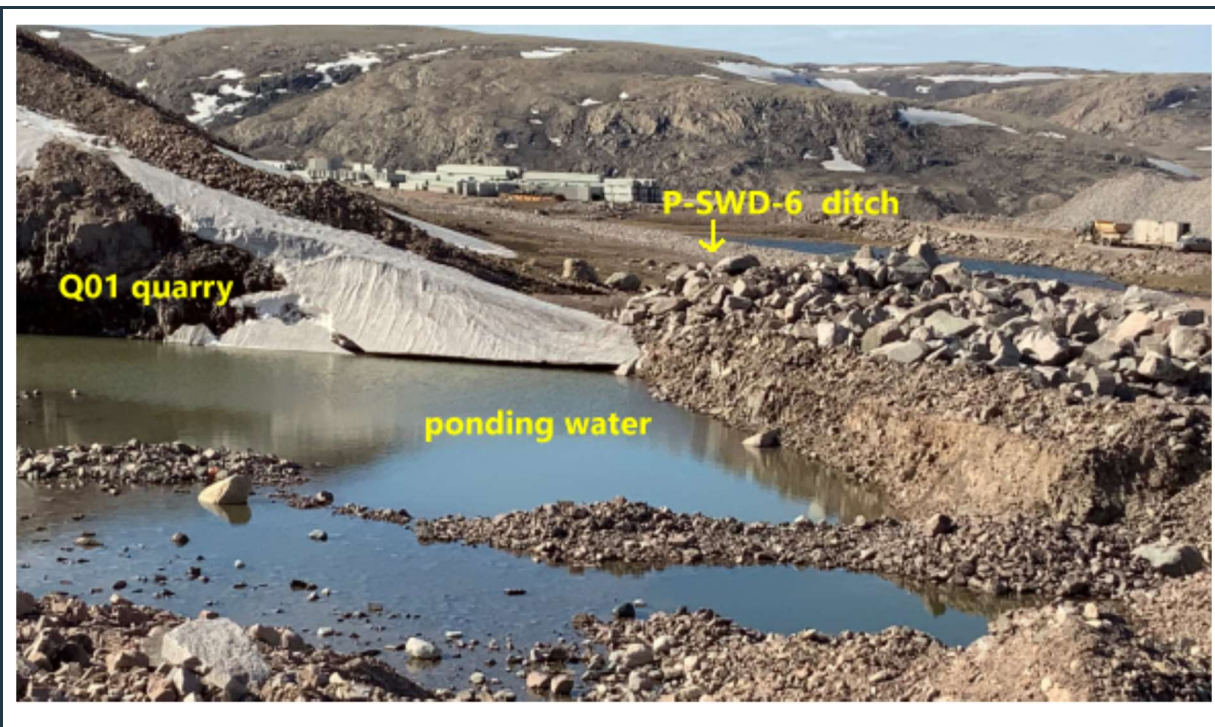


Figure 62: Ponding water next to the P-SWD-6 - “Q01 South” surface water collection ditch.

d) P-SWD-7 (ditch and culverts adjacent to the new freight dock)



Figure 63: View of the P-SWD-7 surface water collection ditch and culverts (inlet).



Figure 64: View of the P-SWD-7 surface water collection ditch and culverts (outlet).

e) W3/W14 (surface water collection ditch)



Figure 65: View of the W3/W14 uncompleted surface water collection ditch with some erosion.

f) 380M (surface water collection ditch)



Figure 66: View of the south section of the 380 M surface water collection ditch.



Figure 67: View of the east section of the 380 M surface water collection ditch.

g) PSC (new surface water collection ditch)



Figure 68: View of the PSC surface water collection ditch and culvert (still under construction). Note the localized slope failure on the left side of the image (yellow circle), which section will require slope rehabilitation with riprap placement.

1.8 Tote Road Ditch and Culverts



Figure 69: View of twin culverts, draining surface water from the quarry area under the tote road (inlet).



Figure 70: View of twin culverts, draining surface water from the quarry area (outlet).

