

## APPENDIX D.3

### MILNE PORT PHOTO SHEET



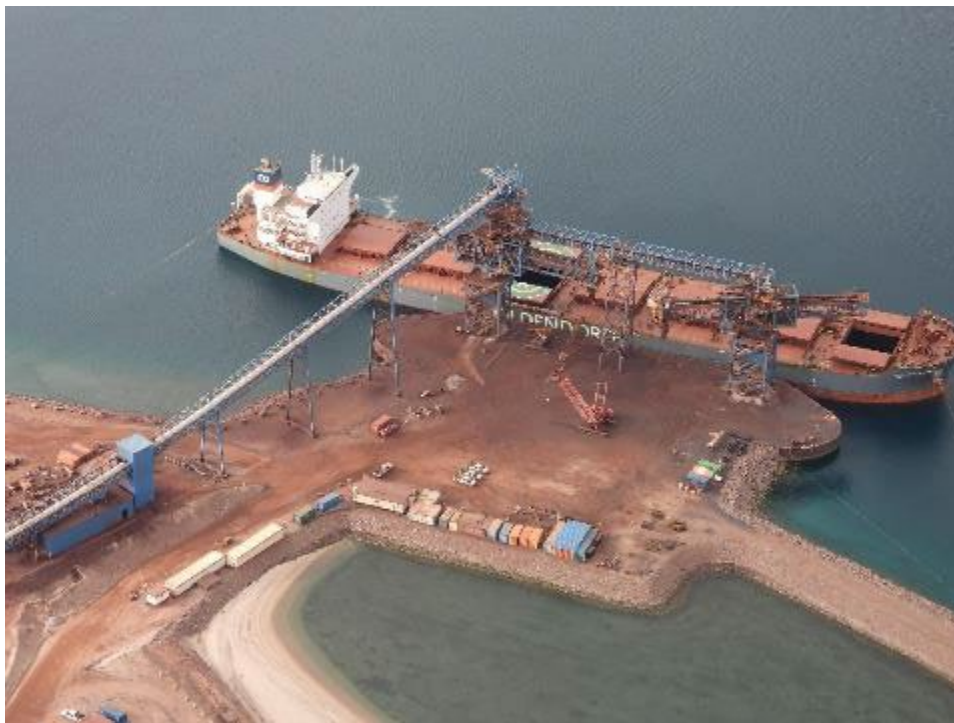
**Photo 1** – Aerial View of Milne Port – July 2021



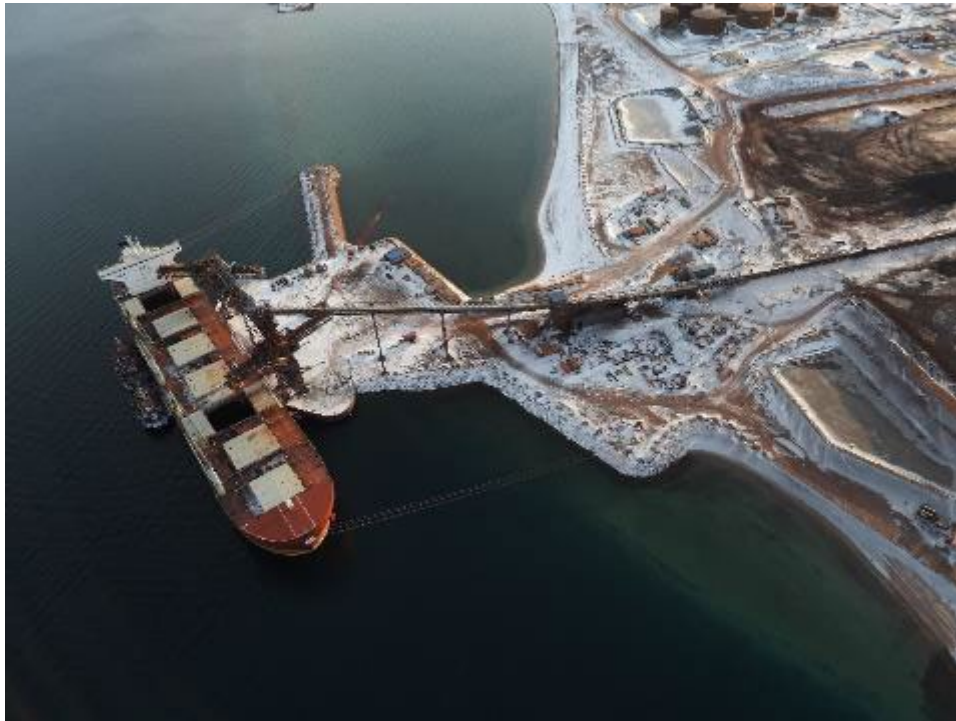
**Photo 2** – Aerial view of Milne Port and Shiploader – August 2021



**Photo 3** – Aerial View of Nordic Qinngua Ship in Milne Inlet – August 2021



**Photo 4** – Aerial View of Ship Loader – August 2021



**Photo 5** – Aerial View of Ship Loader and Surface Water Management Ponds – October 2021



**Photo 6** – Aerial View of Ore Pad Facility and Surface Water Management Ponds – August 2021



**Photo 7** – Aerial View of West Ore Pad Surface Water Management Pond (MP-06) – August 2021



**Photo 8** – Southwest Ore Pad Surface Water Management Pond (MP-06) – September 2021



**Photo 9** – Aerial View of East Ore Pad Surface Water Management Pond (MP-05) – August 2021



**Photo 10** – East ore pad surface water management pond (MP-05) – September 2021



**Photo 11** – Aerial View of Freight Dock and B1 Pad — August 2021



**Photo 12** – Aerial View of Steel Tank Bulk Fuel Storage Facility (MP-03) – August 2021



**Photo 13** – Aerial View of Generators, Maintenance Shops, Incinerator Building and PSC – August 2021



**Photo 14** – Aerial View of Polishing Waste Stabilization Pond (MP-01A) and Generators – September 2021



**Photo 15** – Aerial View of LP2 Laydown and PSC Accommodations – September 2021



**Photo 16** – Aerial View of Quarry (Q1) – September 2021



**Photo 17** – Aerial View of the 380 Person Camp - September 2021



**Photo 18** – Aerial view of Landfarm (MP-04) and Contaminated Snow Berm (MP-04A) – August 2021



**Photo 19** – Aerial View of L2 and R3 Laydowns along Tote Road – August 2021



**Photo 20** – Hydrology Monitoring at SNP Site (MP-C-K) – September 2021



**Photo 21** – Routine Sampling at SNP Site (MP-C-K) – August 2021



**Photo 22** – Bulk Fuel Tanker in Milne Inlet – August 2021



**Photo 23** – Oil Pollution Emergency Plan (OPEP) Spill Response Training Exercise – August 2021



**Photo 24**– Oil Pollution Emergency Plan (OPEP) Spill Response Training Exercise – August 2021



**Photo 25** – Aerial view of Milne Inlet HTO Cabin– August 2021



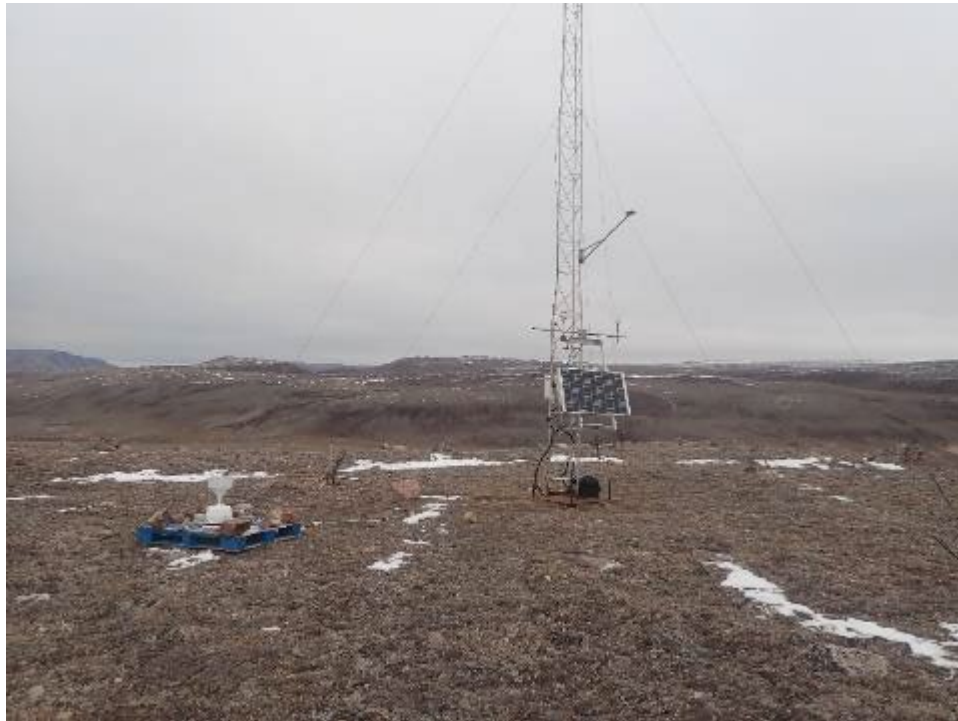
**Photo 26** –Sustainable Development Vessel for the Marine Environmental Effects Monitoring Plan (MEEMP) Program – August 2021



**Photo 27**– Dust Suppression Being Applied to the Ore Pad Stockpile – November 2021



**Photo 28** – Routine Dustfall Site Visit (DF-P-04) – November 2021



**Photo 29** – Meteorological Tower Station East of Milne Port – September 2021



**Photo 30** – New Beta Attenuation Monitor (BAM 1020) Unit Inside Port Site Complex (PSC) – October 2021