

APPENDIX D.1

Mine Site Photo Journal

Deposit 1 – Nuluujaak Pit



Photo 1. Deposit 1 - June

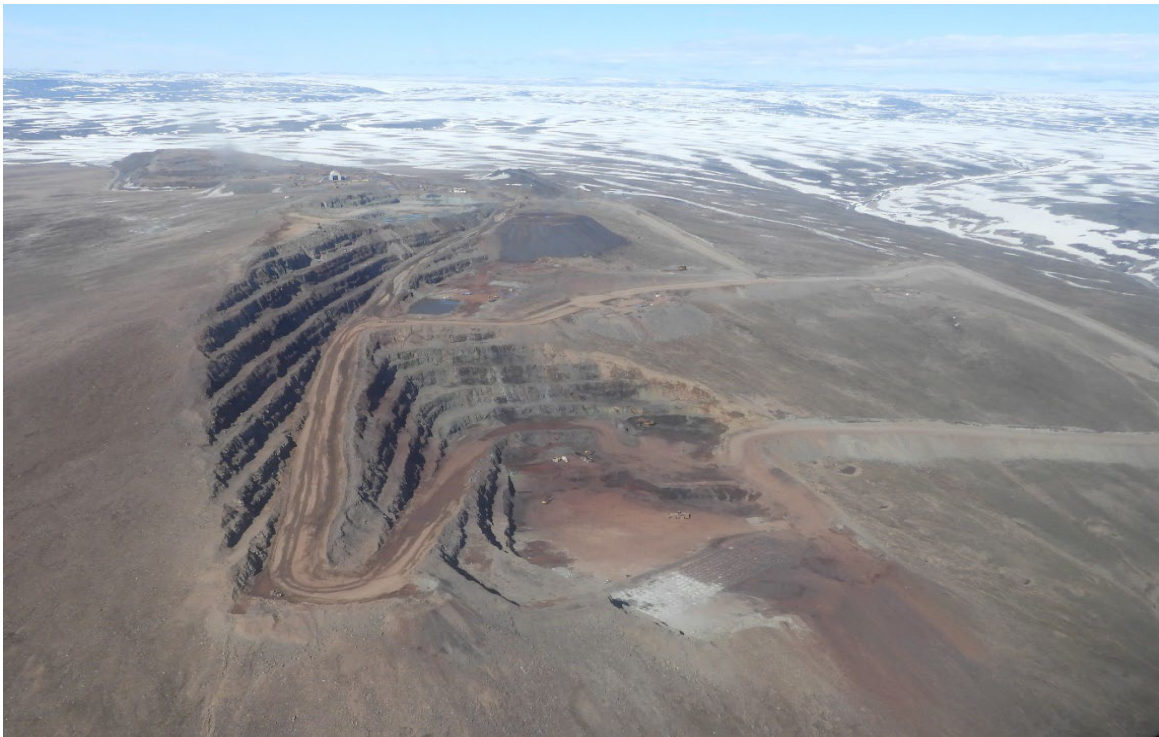


Photo 2. Deposit 1 - June



Photo 3. Deposit 1 and the Run of Mine Ore Stockpile Facility - June



Photo 4. Deposit No. 1 and the Mary River - July

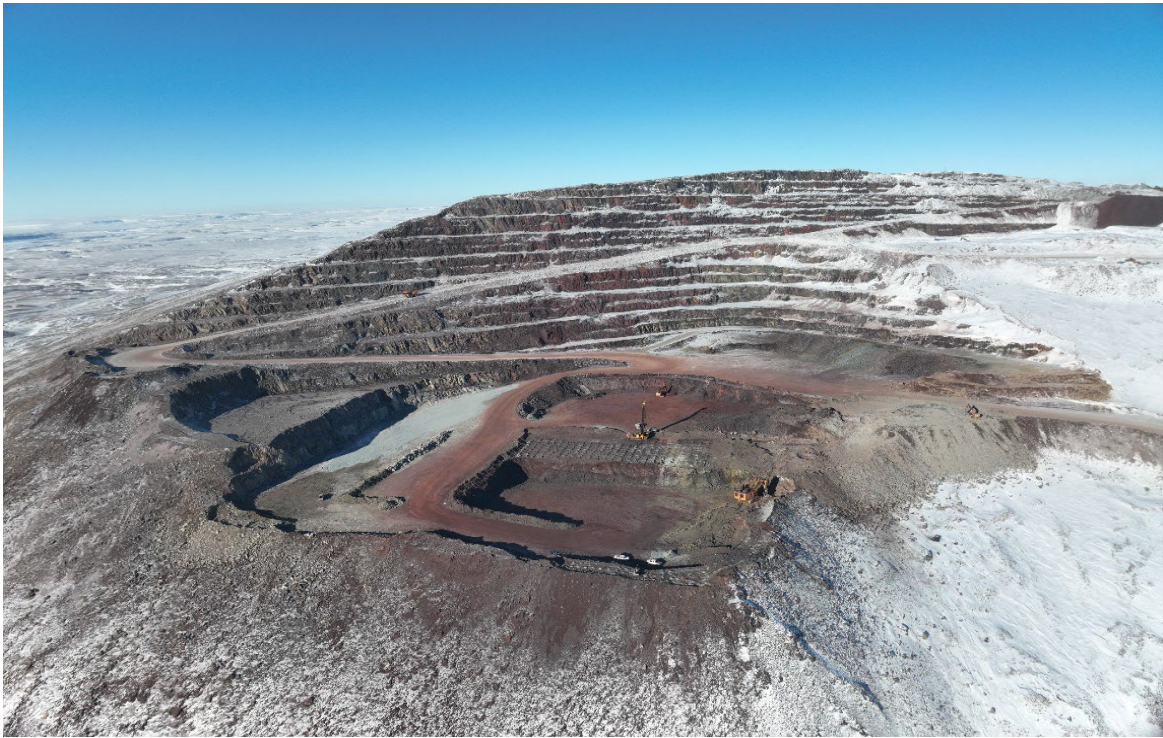


Photo 5. Drilling Blast Pattern in Nuluujaak Pit - March 2024



Photo 6. Loading a 570 Mine Haul Truck in Nuluujaak Pit - April 2024

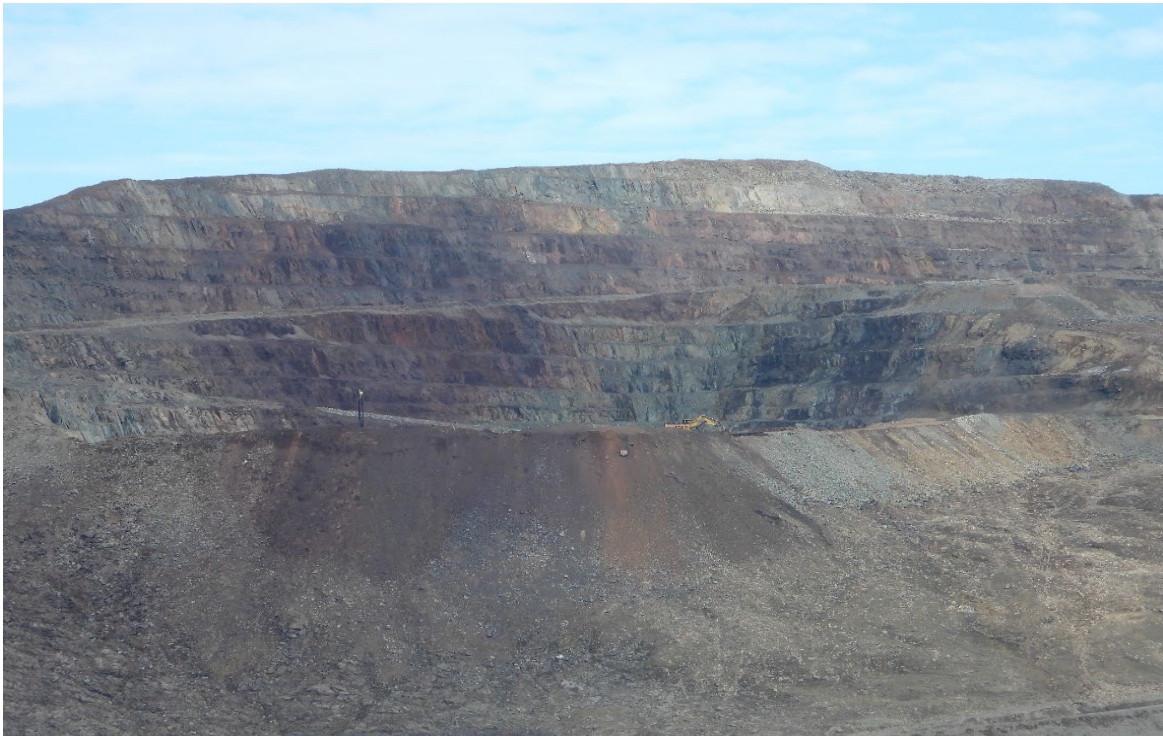


Photo 7. Deposit No. 1 Nuluujaak Pit Walls - June 2024



Photo 8. Drilling Blast Pattern in Nuluujaak Pit - September

Waste Rock Facility



Photo 9. Waste Rock Facility Surface Water Management Pond (MS-08) - June

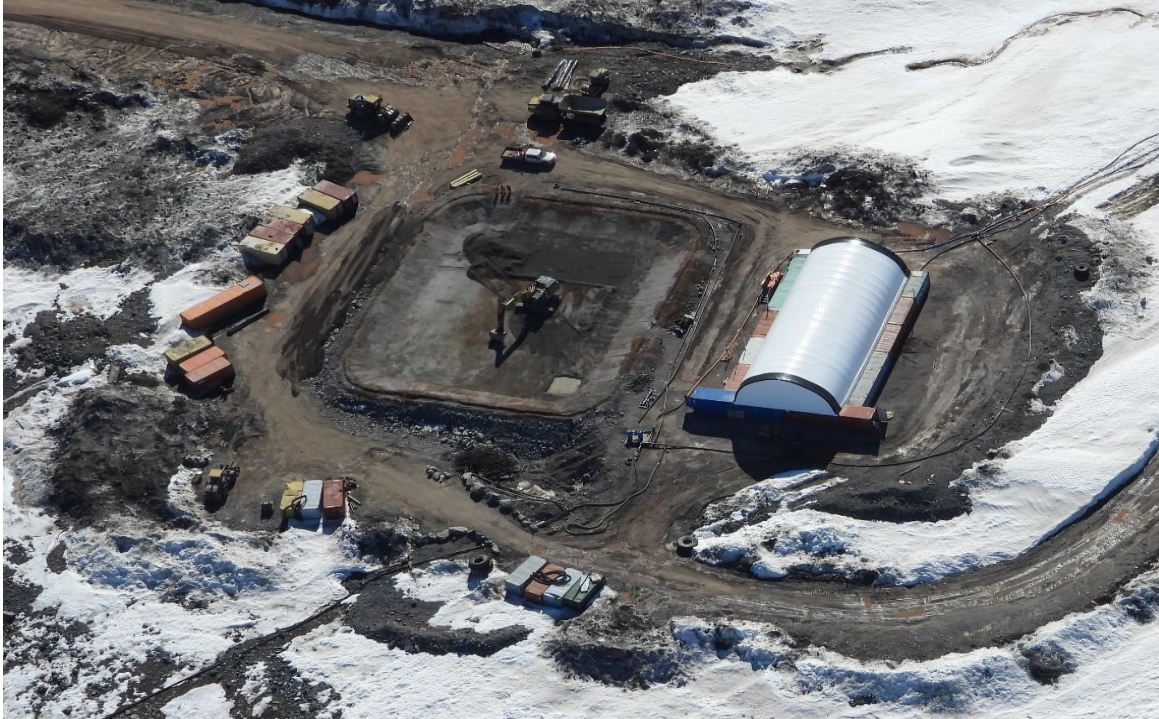


Photo 10. Geotube Replacement at the Waste Rock Facility Water Treatment Plant - June



Photo 11. Waste Rock Facility Surface Water Management Pond (MS-08) - July



Photo 12. Geotube Replacement Completed at the Waste Rock Facility Water Treatment Plant - August



Photo 13. Waste Rock Facility Surface Water Management Pond (MS-08) - August



Photo 14. Waste Rock Facility - August



Photo 15. Waste Rock Facility - August

Km 110 Laydown



Photo 16. Maintenance Shop at Km 110 - July



Photo 17. Maintenance Shop and Laydown at Km 110 - August



Photo 18. Maintenance Shop at Km 110 - September

Mine Haul Road



Photo 19. Mine Haul Road and Km 106 Stockpile Pad - June



Photo 20. Mine Haul Road - July

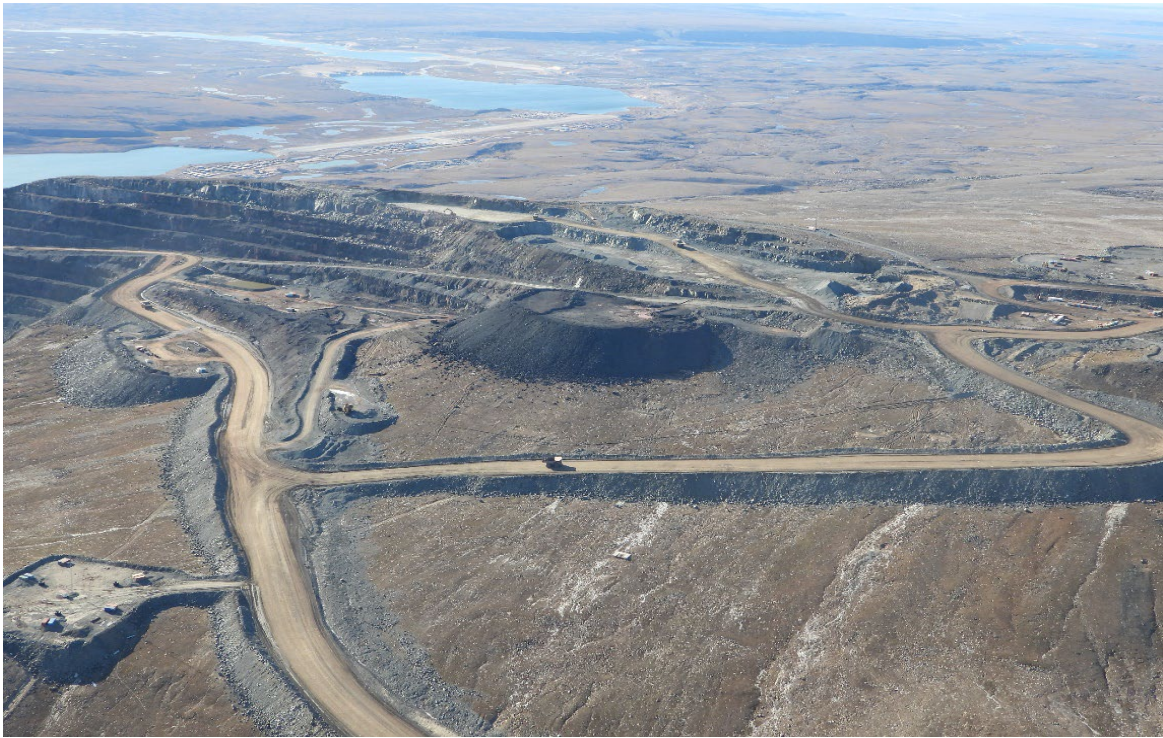


Photo 21. 570 Cross-cut Hillside Road and 108 By-pass Road - August

Run of Mine Ore Stockpile Facility



Photo 22. Run of Mine Ore Stockpile Facility - June



Photo 23. Run of Mine Ore Stockpile Facility - July



Photo 24. Run of Mine Ore Stockpile Facility Surface Water Management Pond (MS-07) - July



Photo 25. Run of Mine Ore Stockpile Facility Surface Water Management Pond (MS-07) - August

Magazine Access Road



Photo 26. Magazine Access Road and Emulsion Storage - July

KM 105 Surface Water Management Pond



Photo 27. Remedial Construction at the km 105 Surface Water Management Pond (MS-11) - February



Photo 28. Remedial Construction at the km 105 Surface Water Management Pond (MS-11) - February



Photo 29. Km 105 Surface Water Management Pond (MS-11) - June



Photo 30. Water Treatment Plant Upstream of the Km 105 Surface Water Management Pond (MS-11) - June



Photo 31. KM105 Surface Water Management Pond (MS-11) - August

Km 104 Laydown



Photo 32. Km 104 Laydown - August

Ore Crushing Facility



Photo 33. Ore Haul Truck Being Loaded with Fines - June



Photo 34. Ore Crushing Facility and Stacked Fines- August



Photo 35. Ore Crushing Facility Surface Water Management Pond (MS-06) - July



Photo 36. Ore Crushing Facility Surface Water Management Pond (MS-06) - September