



Photo 39. Km 80 Communication Tower - June



Photo 40. Km 80 Bridge - June



Photo 41. Km 80 Bridge and Muriel Lake Tributary Water Withdrawal Location - August



Photo 42. Km 80 Bridge and Muriel Lake Water Withdrawal Location - August



Photo 43. New Km 80 Laydown Wash-car Facility - August



Photo 44. Km 81 Culvert CV-216 Remedial Construction Completed- June



Photo 18. Grader Maintaining the Road at Km 85 Bend at BG-29 and BG-30 Culvert Crossings - June



Photo 46. Km 86 Snow Stockpile - June



Photo 47. David Lake from Km 87 - June

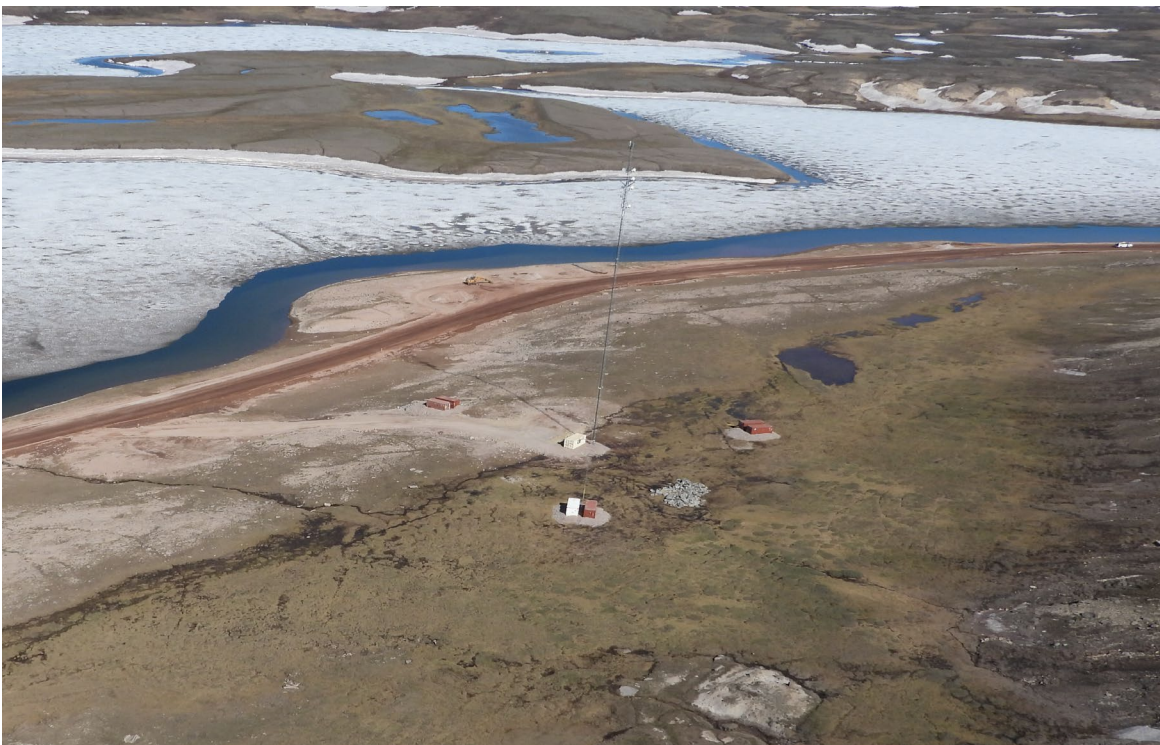


Photo 48. Km 88 Communication Tower - June

Tote Road – KM 90 to KM 100



Photo 49. Km 90 Snowmobile Crossing - January



Photo 50. Km 91 Hill - June



Photo 51. Km 94 Culvert BG-04 Remedial Construction Completed - June



Photo 52. Km 95 Culvert CV-001 Remedial Construction Completed - June



Photo 19. Km 96.5 Laydown and Snow Stockpile - June



Photo 54. Km 96.5 Laydown - August



Photo 55. Km 97 Bridge - August



Photo 56. Km 97 Bridge – August



Photo 57. Km 97 Borrow Pit - August



Photo 58. Km 97 Borrow Pits for Dust Suppression Mixing - August



Photo 59. Km 98 Open Burn Site- August



Photo 60. Km 100 Dip at BG-01 - June

Equipment Working



Photo 61. Grader at Km 68 - August



Photo 62. Water Buffalo Applying Water Dust Suppression at Km 27 - August



Photo 20. Articulated Rock Truck Tire Drag Maintaining Safe Driving Surface at KM 81 - August



Photo 21. Dozer Feathering Snow Away from Road for Wildlife Passage at Km 38 - March



Photo 22. Km 80 Ice Road Decommissioning - May



Figure 23. Ore Haul Truck and Water Buffalo Travelling along Tote Road– July

Monitoring Programs



Photo 24. Water Quality Field Parameter Monitoring Using YSI Meter for Tote Road Monitoring Program - July



Photo 25. Fox Tracks Observed during Snow Track Survey at Km 21 - April



Photo 26. Measuring Fish during the Tote Road Stream Crossing Monitoring Program - July



Photo 27. Height of Land Wildlife Survey Performed by EDI along Tote Road - June



Photo 28. Vegetation Survey performed by EDI along Tote Road - July



Photo 29. Retrieval and Re-deployment of Remote Dustfall Monitoring Equipment along Tote Road - June



Photo 30. Snowbank Height Survey along Tote Road - February

Remediation and Improvements



Photo 75. Remedial Construction of CV-048 (Km 63.5) after September Rain Event - September

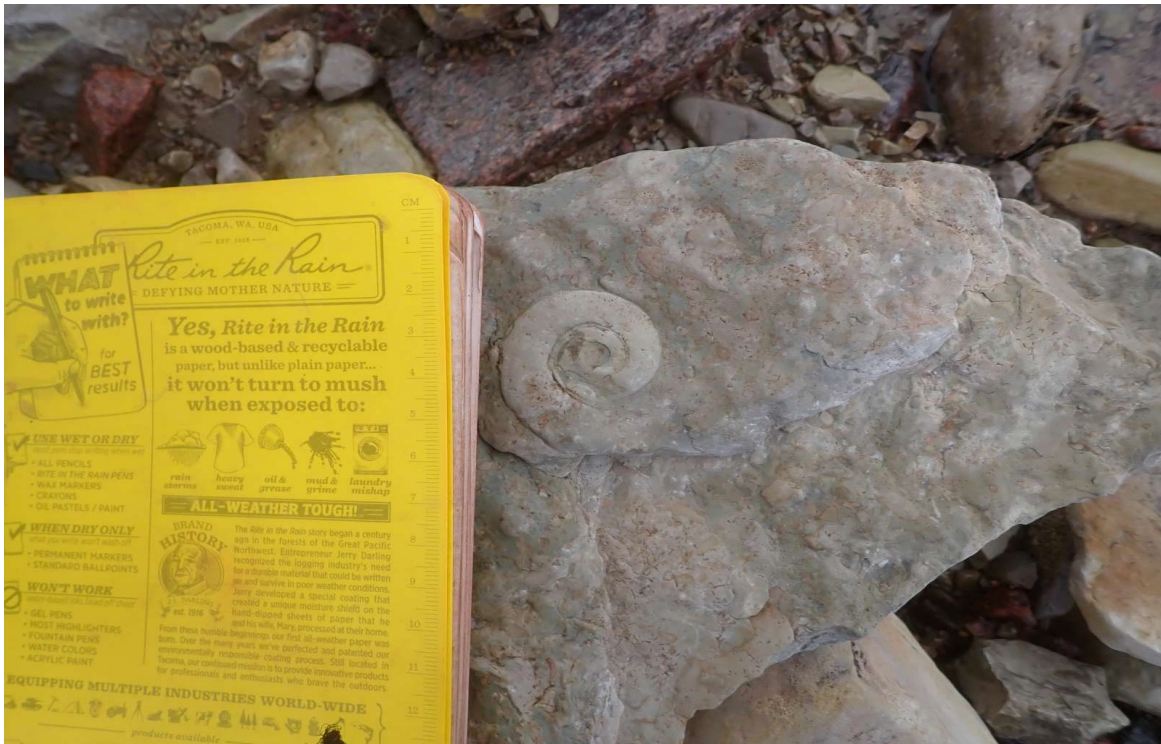


Photo 76. Fossil at CV-078-DS Km 51 - September



Photo 77. Silt Fence Installation along the Tote Road - August