

APPENDIX D.1

Mine Site Photo Journal

Deposit 1 – Nuluujaak Pit



Photo 1. Deposit 1 – August



Photo 2. Deposit 1 - June



Photo 3. Deposit 1 and the Run of Mine Ore Stockpile Facility – August



Photo 4. Deposit 1 and the Mary River - August



Photo 5. Deposit 1 and the Mine Haul Road - August



Photo 6. CAT793 Driving up the Mine Haul Road - June



Photo 7. Deposit 1 Nuluujaak Pit Walls – August



Photo 8. 570 Sump Surface Water Management Pond – July



Photo 9. 470 Sump Surface Water Management Pond – August

Waste Rock Facility



Photo 10. Waste Rock Facility Surface Water Management Pond (MS-08) - June

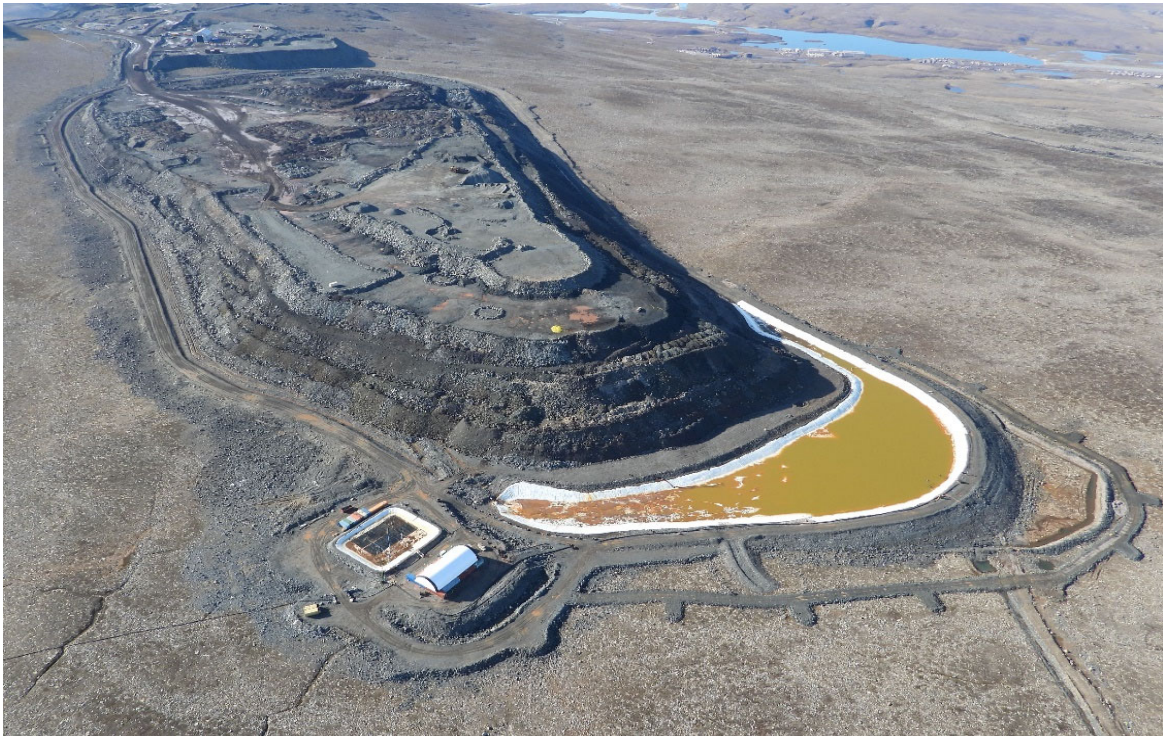


Photo 11. Waste Rock Facility and Surface Water Management Pond (MS-08) – August



Photo 12. Waste Rock Facility Surface Water Management Pond (MS-08) - July



Photo 13. Geotube Pond at the Waste Rock Facility Water Treatment Plant – August



Photo 14. Waste Rock Facility Surface Water Management Pond (MS-08) - August

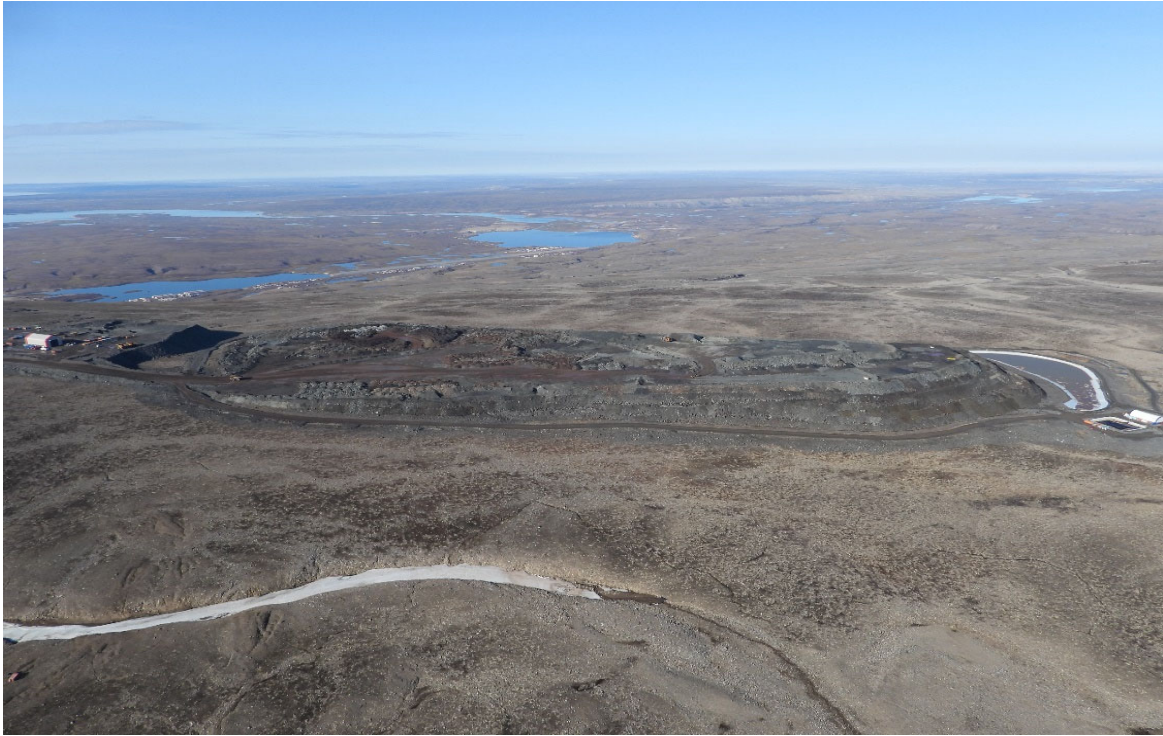


Photo 15. Waste Rock Facility – August



Photo 16. Waste Rock Facility - August

KM 110 Laydown

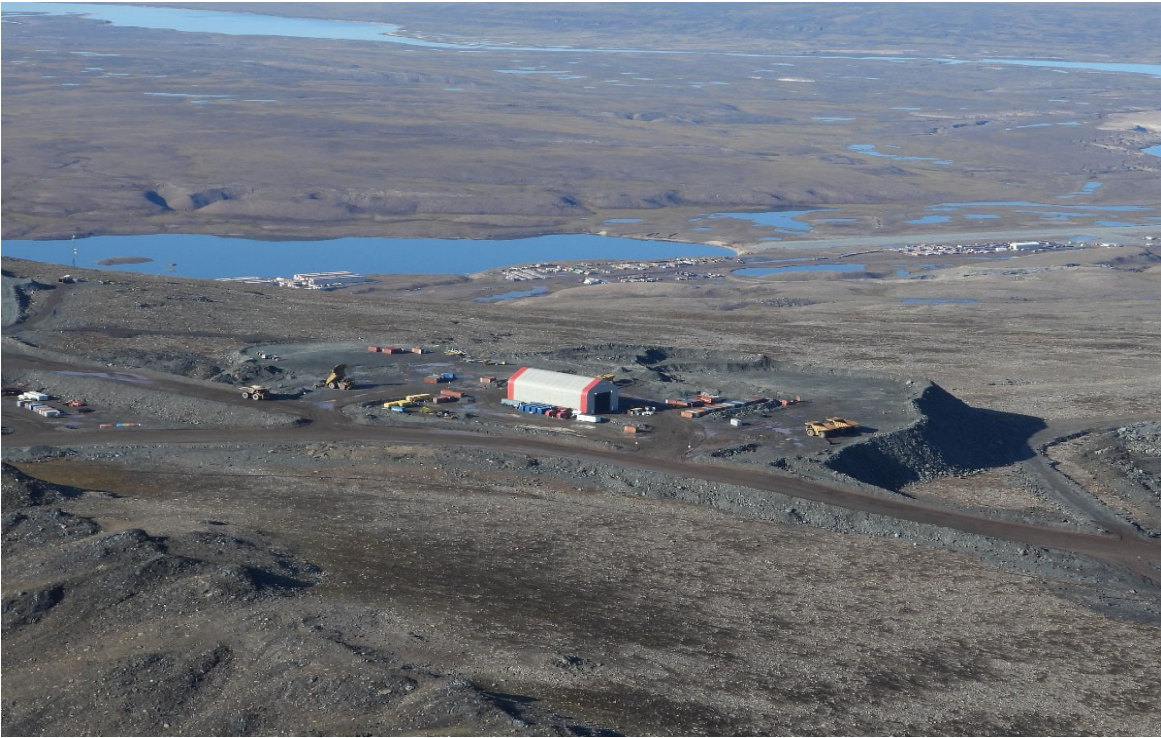


Photo 17. Maintenance Shop at KM 110 – August

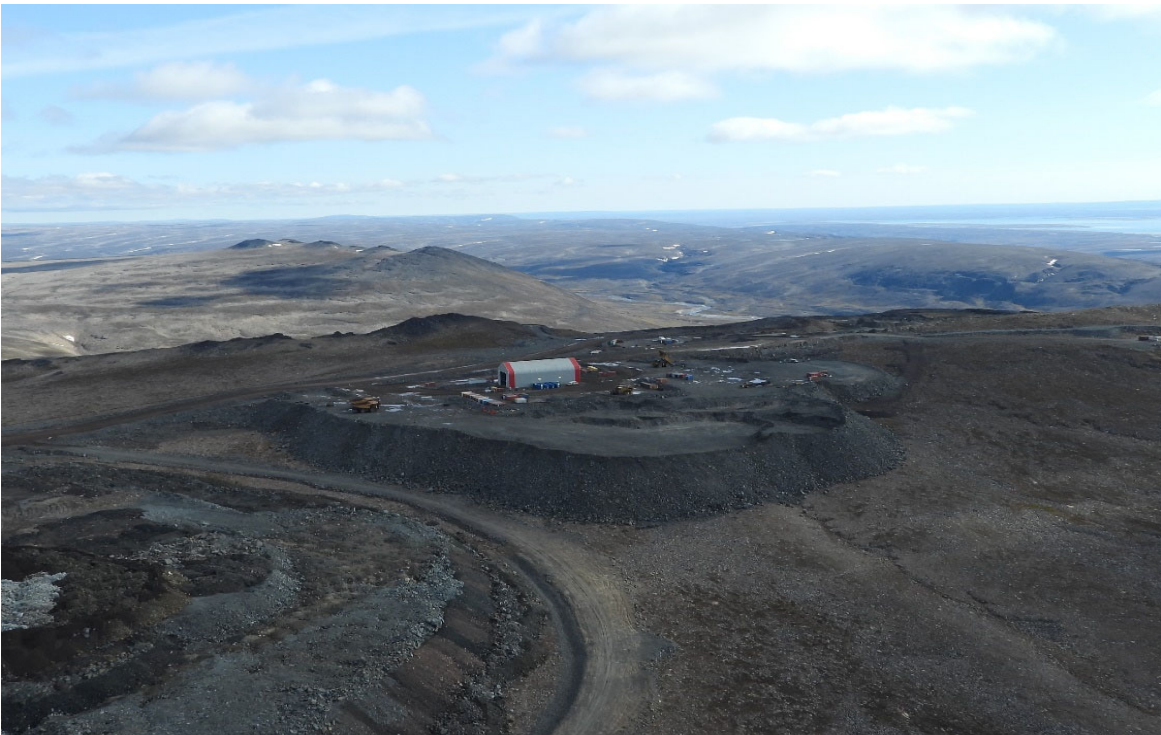


Photo 18. Maintenance Shop and Laydown at KM 110 - August



Photo 19. Maintenance Shop at KM 110 - November

Mine Haul Road

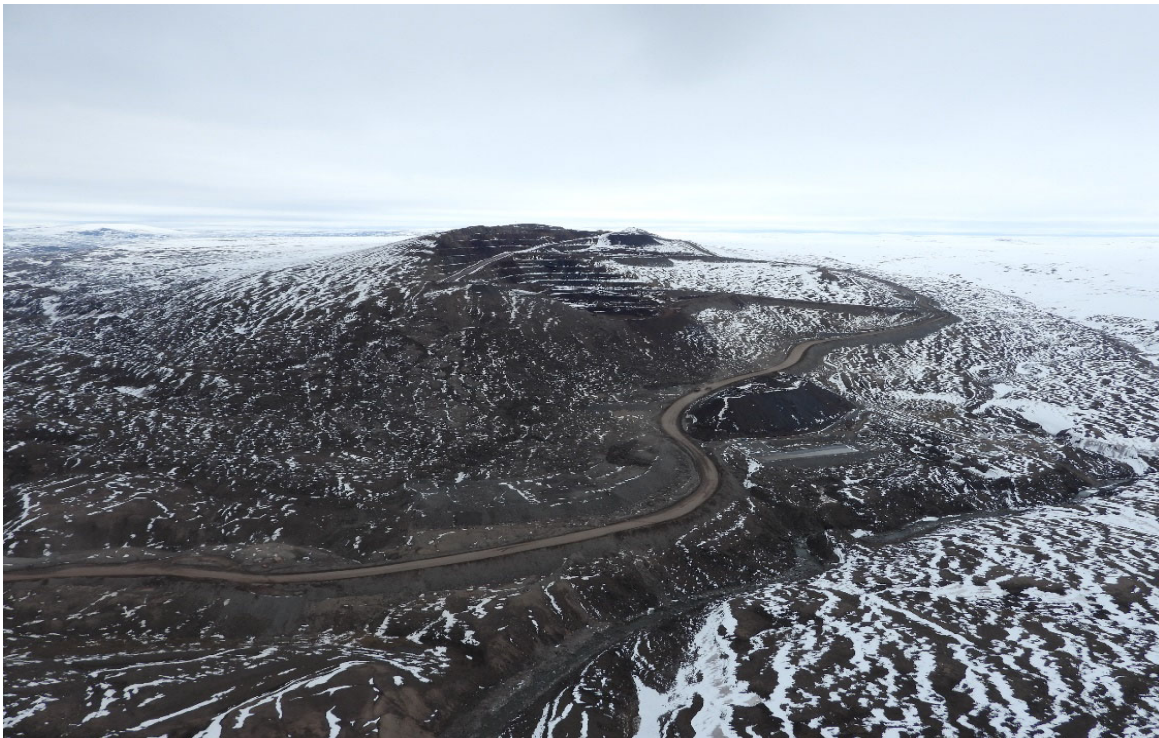


Photo 20. Mine Haul Road - June



Photo 21. Mine Haul Road – July



Photo 22. 570 Cross-cut Hillside Road and 108 By-pass Road - August

Run of Mine Ore Stockpile Facility



Photo 23. Run of Mine Ore Stockpile Facility - August



Photo 24. Run of Mine Ore Stockpile Facility - August



Photo 25. Run of Mine Ore Stockpile Facility Surface Water Management Pond (MS-07) – July



Photo 26. Run of Mine Ore Stockpile Facility Surface Water Management Pond (MS-07) - July

Magazine Access Road



Photo 27. Magazine Access Road and Emulsion Storage - August

KM 105 Surface Water Management Pond



Photo 28. KM104.5 Aggregate Filter Berm inside the KM 105 Surface Water Management Pond (MS-11) – March



Photo 29. KM 104.5 Aggregate Filter Berm inside the KM 105 Surface Water Management Pond (MS-11) – August



Photo 30. KM 105 Surface Water Management Pond (MS-11) – August



Photo 31. Water Treatment Plant Upstream of the KM 105 Surface Water Management Pond (MS-11) – August



Photo 32. KM 105 Surface Water Management Pond (MS-11) - June

KM 104 Laydown



Photo 33. KM 104 Laydown - August

Steensby Aggregate Pad



Photo 34. KM 105 Steensby Aggregate Pad Construction – February



Photo 35. KM 105 Steensby Aggregate Pad Construction – April



Photo 36. Culvert Installation at the KM 105 Steensby Aggregate Pad - May



Photo 37. Road Expansion at the KM 105 Steensby Aggregate Pad – May



Photo 38. KM 105 Steensby Aggregate Pad – August

Ore Crushing Facility



Photo 39. Stacked Lump and Fines at the Ore Crushing Facility – August



Photo 40. Ore Crushing Facility and KM 105 Steensby Aggregate Pad – August



Photo 41. Ore Crushing Facility Surface Water Management Pond (MS-06) – June



Photo 42. Ore Crushing Facility Surface Water Management Pond (MS-06) – July

Mobile Maintenance Buildings



Photo 43. Mobile Maintenance Buildings - August

Mine Site Complex (MSC)



Photo 44. Mine Site Complex - August

Tank Farms



Photo 45. Mine Site Bulk Fuel Storage Facility (MS-03) for Vehicle and Equipment Re-fuelling - October



Photo 46. Bulk Fuel Storage Facility (MS-03) and Power Generation Facility – August



Photo 47. Mine Site Bulk Fuel Storage Facility (MS-03B) - August



Photo 48. Mine Site Bulk Fuel Storage Facility (MS-03B) - August

Emulsion Plant



Photo 49. Emulsion Plant - August

Landfill and Landfarm



Photo 50. Non-Hazardous Waste Landfill and Landfarm Facility – August



Photo 51. Non-Hazardous Waste Landfill Entrance – July



Photo 52. Soil Windrows in the Landfarm Facility Cell 1 - September



Photo 53. Landfarm Facility Cell 2 - November

Sailiivik Camp Complex



Photo 54. Sailiivik Camp Complex – August



Photo 55. Sailiivik Camp Complex – August

OHT Laydown and Laydown 2



Photo 56. OHT Laydown and Fountain Tire Shop – July



Photo 57. OHT Laydown and Laydown 2 – August

Quarry 2



Photo 58. Mine Site Quarry (QRM2) - August

Incinerator Facility and Site Services Laydown



Photo 59. Incinerator Facility and Laydown – August



Photo 60. Incinerator Facility and Laydown – August



Photo 61. Site Services Building and Laydown – August



Photo 62. Site Services Building and Laydown – August

Warehouse and Flight Operations



Photo 63. Warehouse Building and Laydown - August



Photo 64. Airstrip and Flight Operations - August



Photo 65. Mary River Air Strip – August



Photo 66. Mary River Air Strip – August

Camp Lake



Photo 67. Camp Lake Jetty Domestic Water Intake and Rip Rap Drainage Ditches – August



Photo 68. Camp Lake – August

Weatherhaven Complex



Photo 69. Weatherhaven Complex and Hazardous Waste Berms - August



Photo 70. Weatherhaven Complex - August



Photo 71. Oily Waste Water Treatment at Hazardous Waste Berm 7 – August



Photo 72. Polishing Waste Stabilization Ponds – July

Hunter and Trappers Organization (HTO) Cabin



Photo 73. HTO Cabin on Camp Lake – July



Photo 74. HTO Cabin on Camp Lake – August

**Environmental Monitoring
Aquatic Effects Monitoring Program (AEMP)**



Photo 75. AEMP Water Sample Collection on Camp Lake – April



Photo 76. AEMP Water Sample Collection at Remote Site MRY-REF2 – June



Photo 77. AEMP Retrieving Sediment Sample from Sheardown Lake – September



Photo 78. AEMP Water Sample Collection on Camp Lake – July

Hydrology Monitoring Program



Photo 79. Hydrology Rhodamine Water Flow Survey – June



Photo 80. Hydrology Water Level Survey – June

Surveillance Network Program (SNP)



Photo 81. SNP Measuring Stream Depth and Velocity – July



Photo 82. SNP Field Parameter Collection – July

Ground Water Monitoring



Photo 83. Ground Water Field Parameter Monitoring – August

Wildlife Monitoring

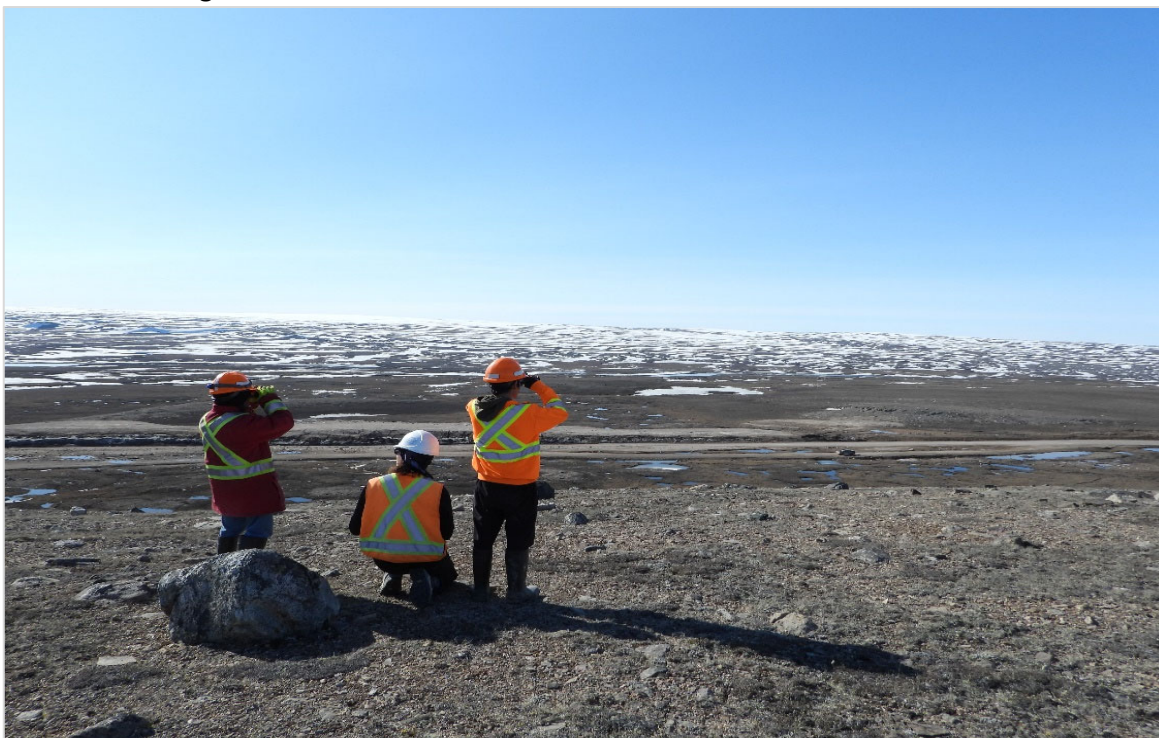


Photo 84. Height of Land Wildlife Survey – May



Photo 85. Caribou Herd Monitored near Sheardown Lake – October



Photo 86. Active Migratory Bird Nest Survey – July

Remote Dust Monitoring



Photo 87. Passive NOx and SOx Monitoring Filter Installation at Remote Site – September



Photo 88. Remote Site Dustfall Monitoring – July



Photo 89. NRCan Passive Monitoring Filter Installation – August

Snow Survey



Photo 90. Snow Core Sample Collection East of Deposit 1 – April

Freshet Preparation and Surface Water Management



Photo 91. Snow Removal Prior to Freshet - April



Photo 92. Snow Removal Prior to Freshet – April



Photo 93. Silt Curtain Installation at MS-C-F – May



Photo 94. Silt Curtain Installation Downstream of MS-C-F – May

Natural Sedimentation

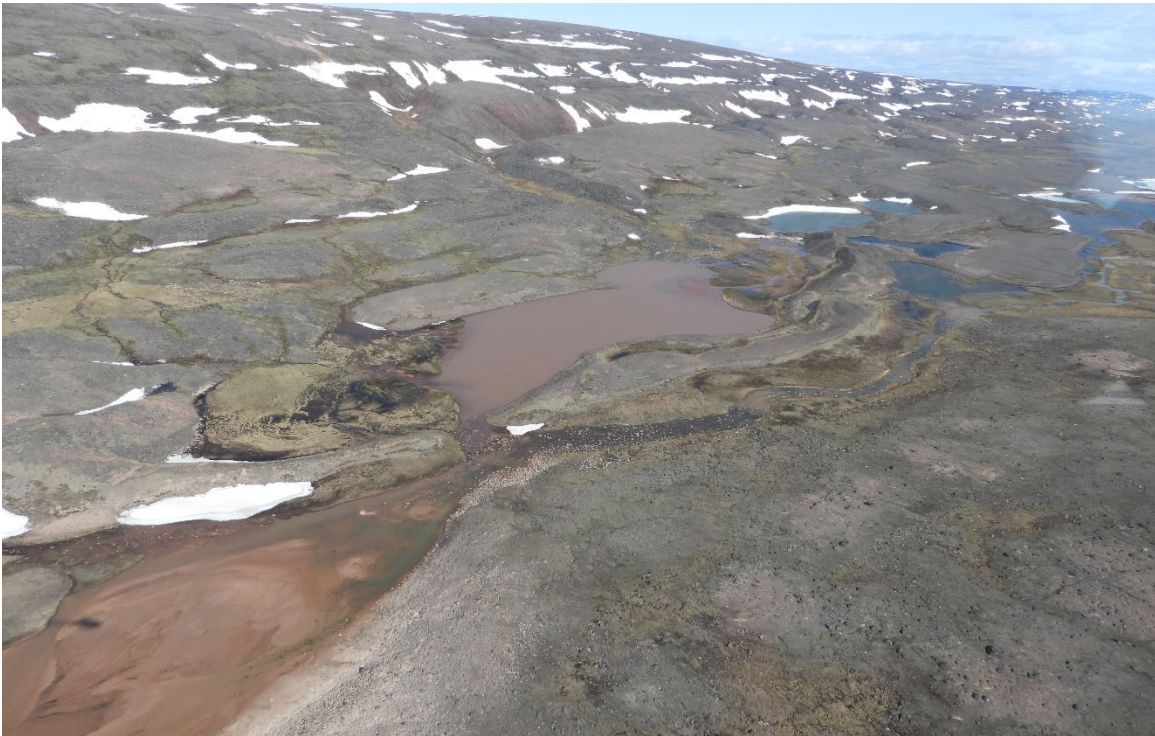


Photo 95. Natural Sedimentation Observed in the Mary River, SR-NR-01 SR-NS-02, SR-NS-03 - June

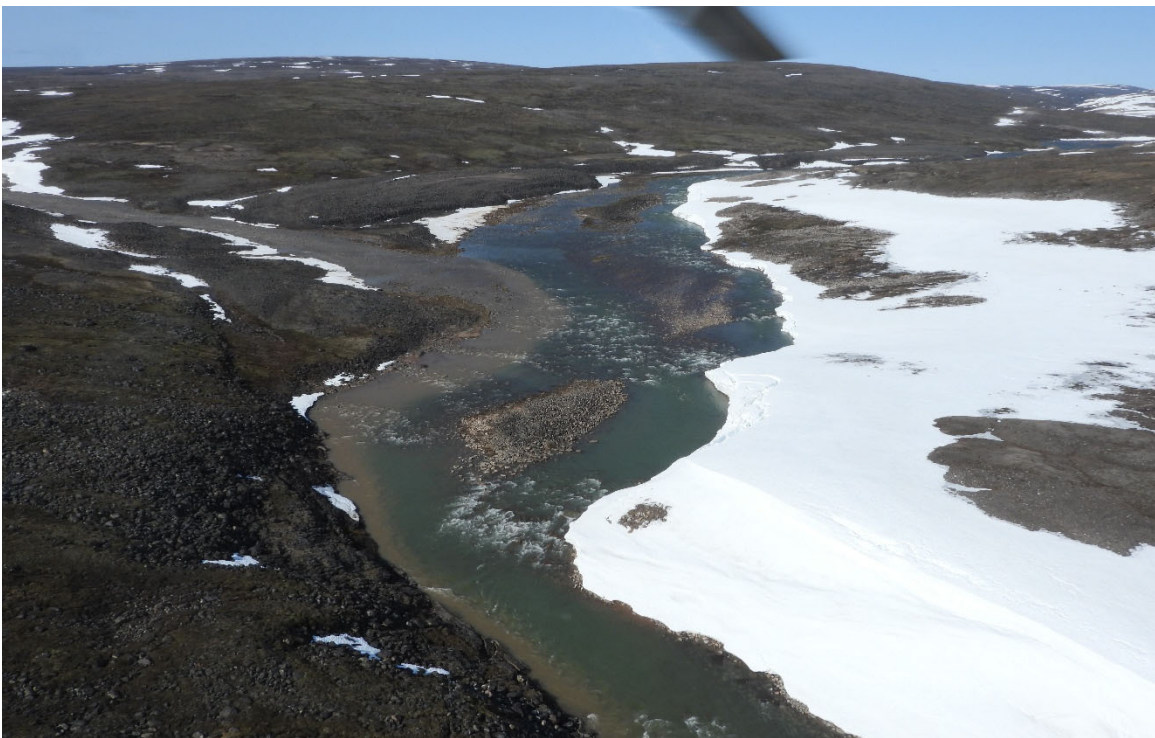


Photo 96. Natural Sedimentation Observed in the Mary River, SR-NR-01 SR-NS-02, SR-NS-03 - June

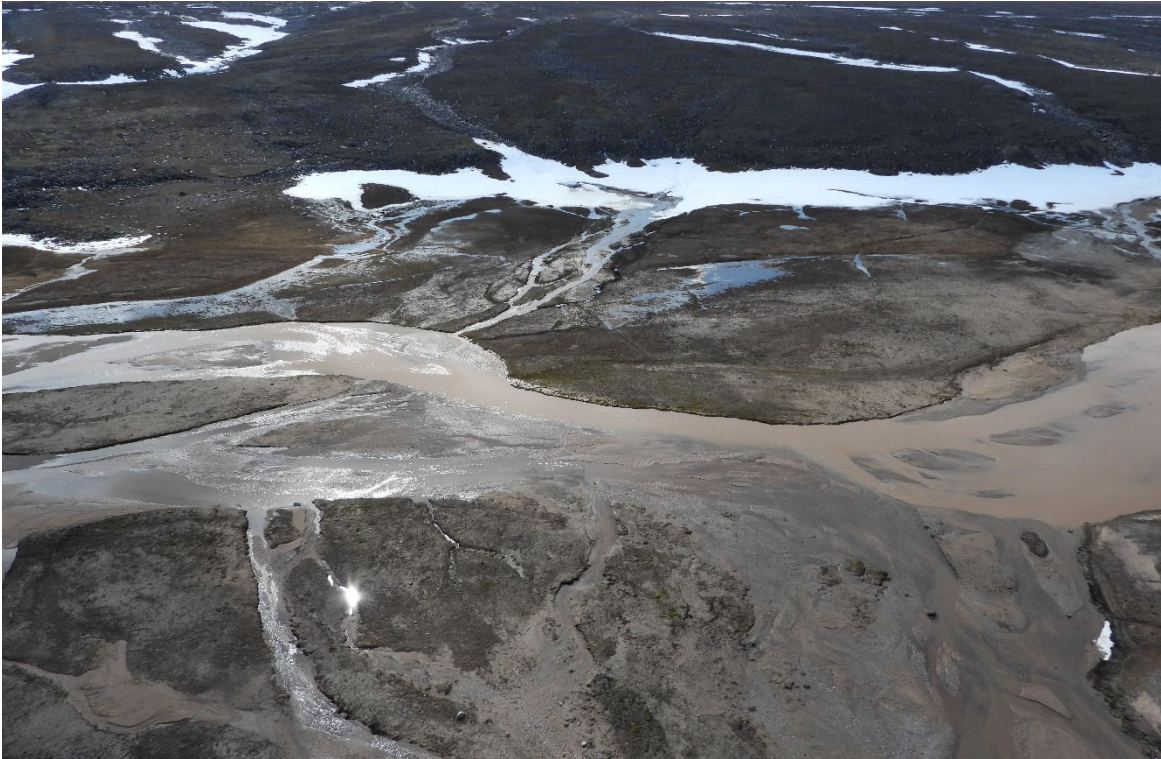


Photo 97. Natural Sedimentation Observed in the Mary River, SR-NR-01 SR-NS-02, SR-NS-03 - June



Photo 98. Natural Sedimentation Event in the Mary River and Sheardown Lake SE Basin – July



Photo 99. Natural Sedimentation Event in the Mary River and Sheardown Lake SE Basin – July



Photo 100. Natural Sedimentation Event in the Mary River Near AEMP Streams Site G0-09-B – July



Photo 101. Natural Sedimentation Event in Philips Creek Near Hydrology Site H01 – July

Dust Suppression



Photo 102. Applying Water to Site Roadways as Dust Suppression – August