

APPENDIX D.2
Tote Road Photo Journal

Tote Road – Milne Port to KM 10



Photo 1. KM 4 R1 Laydown – July



Photo 2. KM 4 Open Burn – July



Photo 3. KM 6.5 L2 Laydown – June



Photo 4. KM 7 R3 Laydown and Communications Tower – July

Tote Road – KM 10 to KM 20



Photo 5. KM 17 Bridge looking upstream- June



Photo 6. KM 17 Bridge – July



Photo 7. KM 17 Water Withdrawal Location - August

Tote Road – KM 20 to KM 30

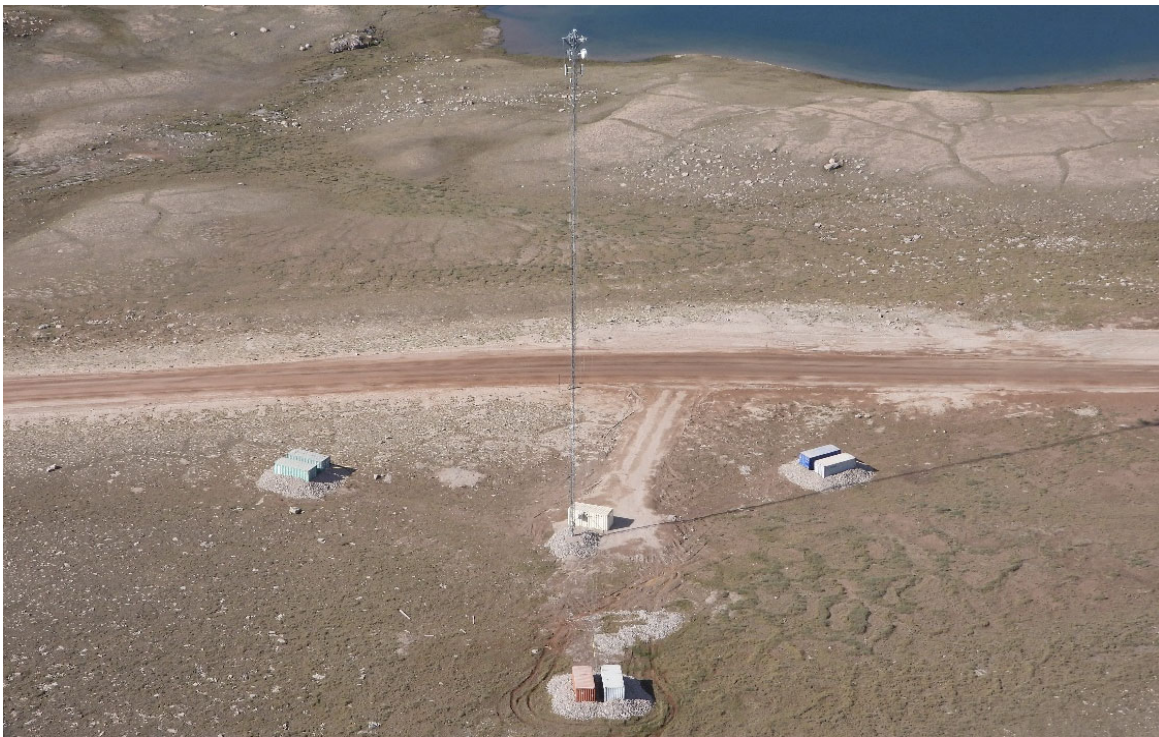


Photo 8. KM 26 Communications Tower – July



Photo 9. KM 28 Hill - July

Tote Road – KM 30 to KM 40



Photo 10. KM 32 Water Withdrawal Pump at Katiktok Lake - August



Photo 11. KM 32 Water Withdrawal location at Katiktok Lake – August



Photo 12. KM 33 Laydown – July



Photo 13. KM 37 Snow Stockpile Location – July

Tote Road – KM 40 to KM 50



Photo 14. KM 40 Communications Tower – July



Photo 15. KM 49 Communications Tower – July

Tote Road – KM 50 to KM 60



Photo 16. KM 50 Borrow Pit Remediation - August



Photo 17. Fish Crossing Sign at KM 51 (CV-049) – October



Photo 18. KM 54 Water Withdrawal Location - August

Tote Road – KM 60 to KM 70



Photo 19. KM 60 Laydown – July



Photo 20. KM 63 Bridge, looking upstream - June



Photo 21. KM 63 Bridge – July



Photo 22. KM 63 Snow Stockpile Location– July

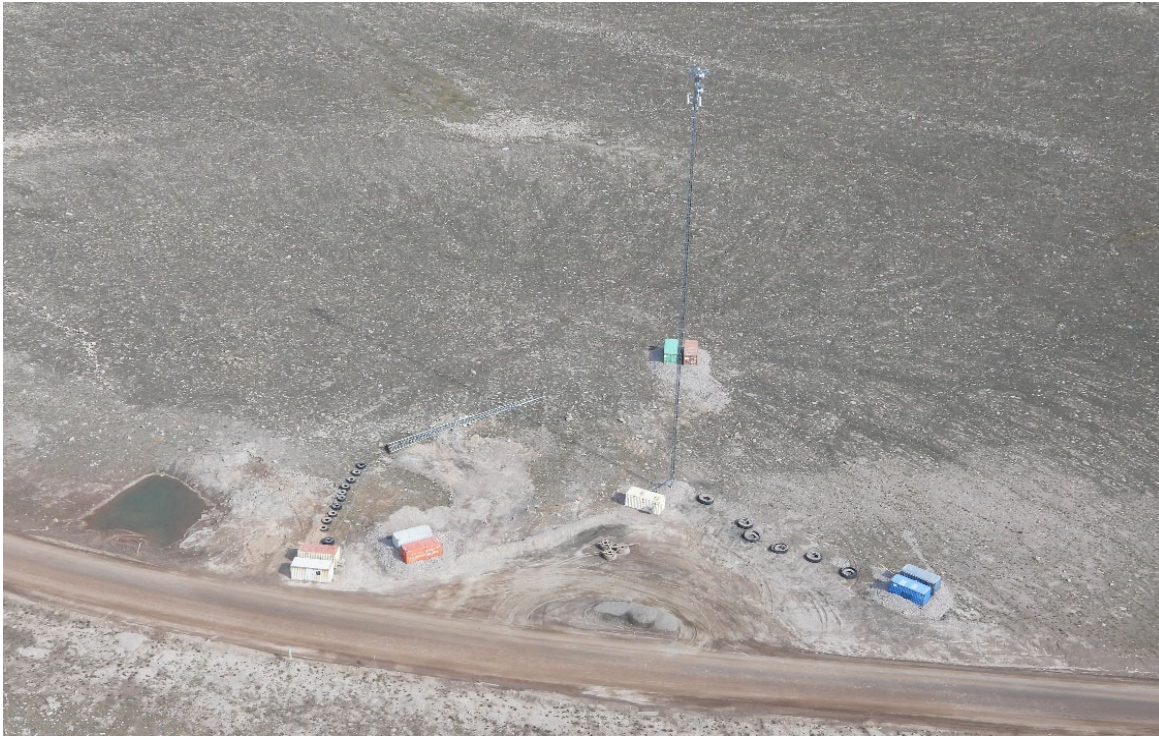


Photo 23. KM 69 Communications Tower – July

Tote Road – KM 70 to KM 80



Photo 24. KM 75 Snow Stockpile Location – July



Photo 25. KM 76 Snow Stockpile Location – July



Photo 26. KM 77 Hill – July



Photo 27. KM 77 Plateau – July

Tote Road – KM 80 to KM 90



Photo 28. KM 80 Communications Tower – July



Photo 29. KM 80 Bridge looking downstream - June



Photo 30. KM 80 Bridge – July



Photo 31. KM 80 Laydown – July



Photo 32. KM 86 Snow Stockpile Location - July



Photo 33. KM 86-89 Along David Lake - July

Tote Road – KM 90 to KM 100



Photo 34. KM 90 Snowmobile Crossing - October



Photo 35. KM 92 Hill - July



Photo 36. KM 96.5 Snow Stockpile and Laydown - July



Photo 37. KM 97 Bridge looking upstream- June



Photo 38. KM 97 Bridge - July

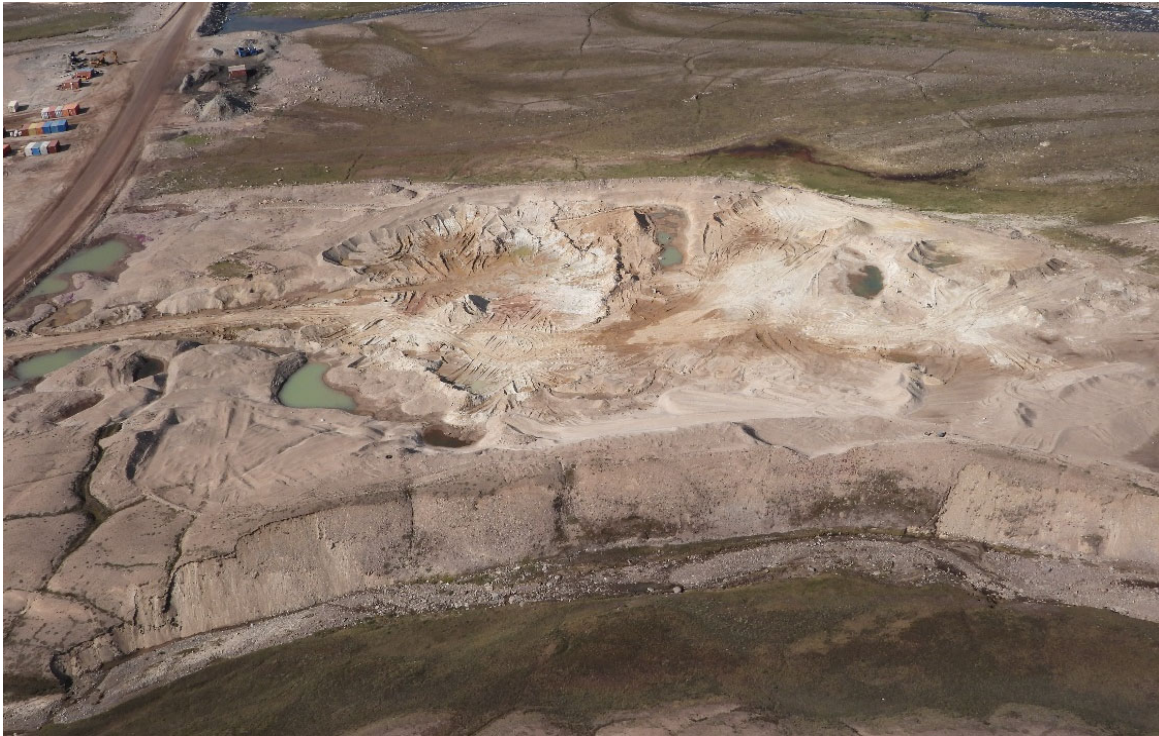


Photo 39. KM 97 Borrow Pit East Remediation - July



Photo 40. KM 97 Borrow Pit West for Dust Suppression Mixing - July



Photo 41. KM 98 Open Burn - July



Photo 42. KM 100 Dip (BG-01) - July

Construction Activity



Photo 43. KM 17 Ice Bridge Removal - May



Photo 44. Installation of Geo Cell at KM 64 – July



Photo 45. Redecking of KM 80 Bridge - March



Photo 46. Erosion and Sediment Control Silt Fence at KM 87.5 Water Crossing (BG-24) – September



Photo 47. Erosion and Sediment Control Silt Fence at KM 87.5 Water Crossing (BG-24) – September



Photo 48. Borrow Pit 14A Remediation at KM 89 - September



Photo 49. Removal of Southern Abutment of KM 97 Bridge – March

Equipment Working



Photo 50. Kalmar and Flat Deck Moving Seacans at KM 10 - July



Photo 51. Loader Filling Rock Truck at KM 18 - March



Photo 52. Tire Drag Working at KM 21 - July



Photo 53. Water Buffalo Applying Dust Suppressant at KM 58 - July



Photo 54. Loader Feathering Snowbank at KM 72 - March



Photo 55. Tire Drag Working at KM 72.5 - July



Photo 56. Loader Pushing OHT up KM 77 Hill - July



Photo 57. OHT crossing KM 80 Bridge - July



Photo 58. Water Buffalo Applying Dust Suppressant at KM 88 - July



Photo 59. Dozer Feathering Snowbanks into Tundra at KM 95 - February



Photo 60. Drilling KM 97 Bridge Abutments for Replacement - February



Photo 61. Excavator Removing KM 97 Bridge Abutment - February

Monitoring Programs



Photo 62. Active Migratory Bird Nesting Survey Prior to Borrow Pit Remediation at KM 21 - July



Photo 63. Arctic Fox Tracks Observed During Snow Track Survey at KM 22 – November



Photo 64. Dustfall Sampling at KM 26 (DF-TR-25E) - May



Photo 65. Tote Road Monitoring Program Sampling at KM 32 (CV-112-US) - June



Photo 66. Installation of In-flow Sediment Traps at KM 38 (CV-099) - July



Photo 67. Snowbank Height Survey Measurement at KM 39 – November

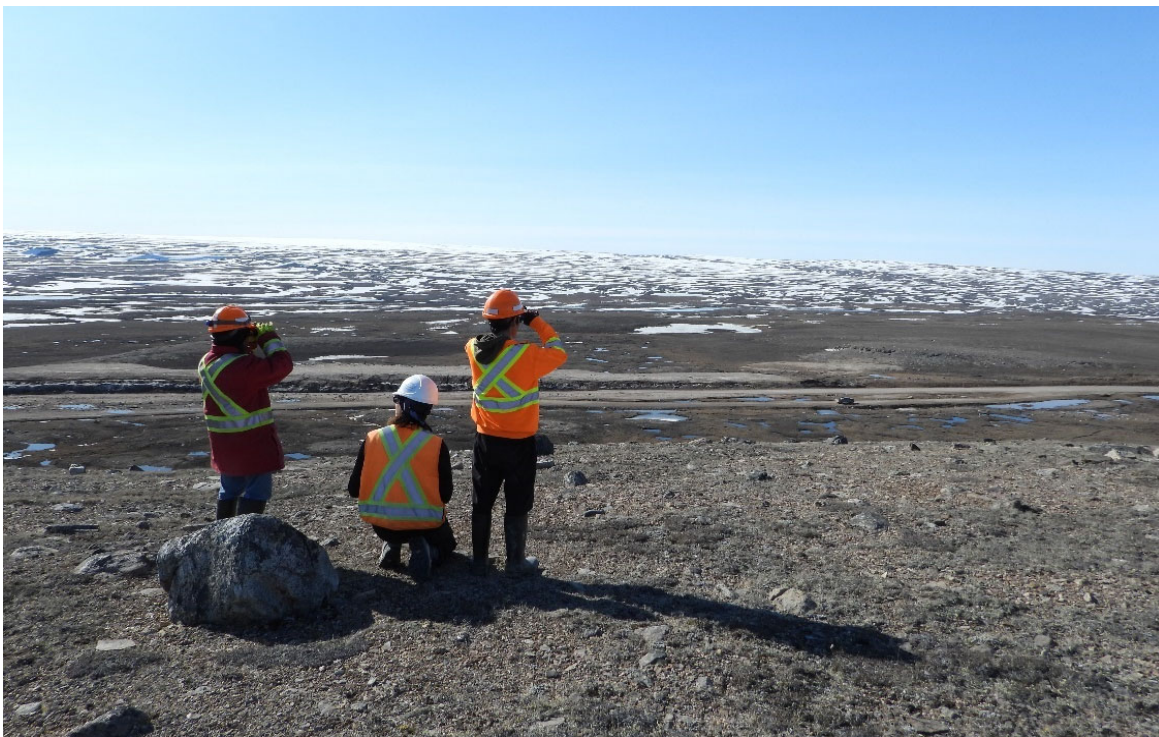


Photo 68. Height of Lands Caribou Survey at KM 74 - June



Photo 69. Pre-construction Fish Salvage at KM 81 (CV-216) - August



Photo 70. Fish Bearing Stream Assessment at KM 90 (BG-17) - July

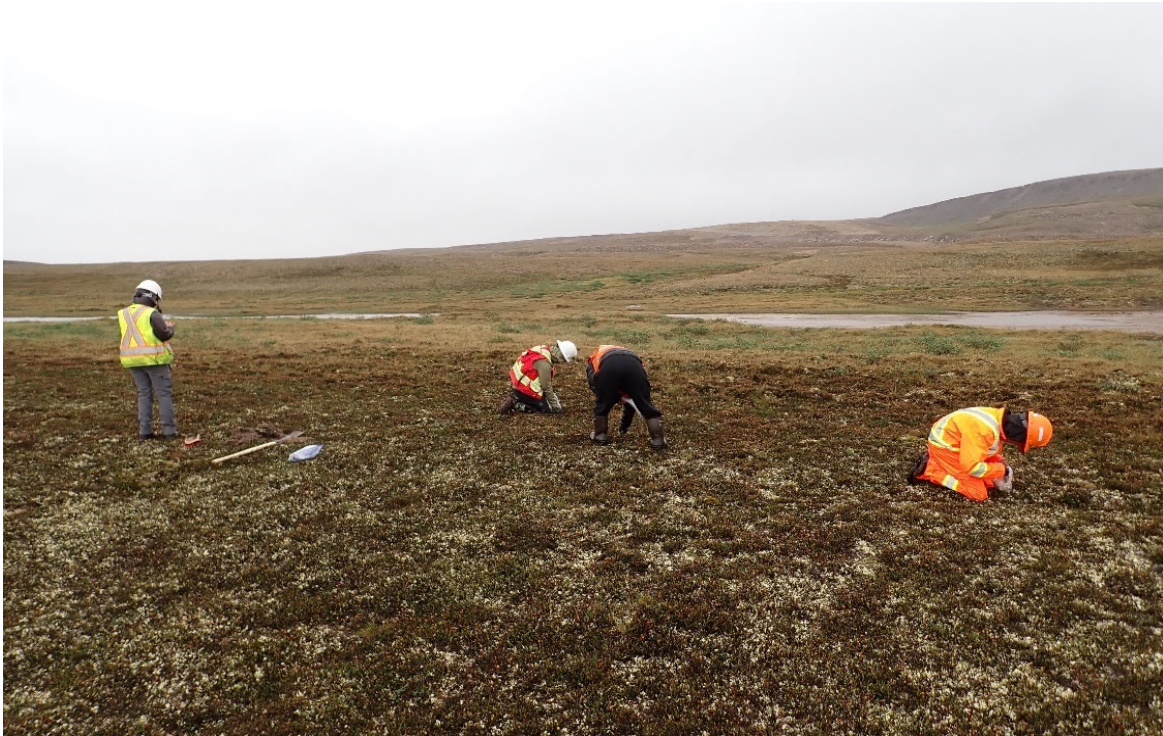


Photo 71. Vegetation Abundance Survey at KM 94 - July

Natural Sedimentation



Photo 72. Erosion gully and ground slumping upstream of CV-111 (KM 32) - August



Photo 73. Erosion gully and sediment deposition into watercourse, upstream of CV-111 (KM 32) - August



Photo 74. Erosion gully and sediment deposition into watercourse, upstream of CV-111 (KM 32) - August

Wildlife



Photo 75. Three Long-tailed Ducks Swimming in Phillips Creek at KM 42 - June



Photo 76. Two Red-throated Loons Swimming in Katiktok Lake at KM 55 - June



Photo 77. An Arctic Fox Peering over a Snowbank at KM 63 - March



Photo 78. A Northern Collared Lemming Examining its Surroundings at KM 74 - June



Photo 79. A Snowy Owl Sitting on a Hillside at KM 89 - May



Photo 80. A Lapland Longspur Perched on a Rock at KM 93 - June



Photo 81. A Group of Caribou at KM 95 - May



Photo 82. A Sandhill Crane Walking Across the Tundra at KM 96 - July