



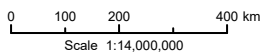
SAVED: C:\Users\Krislina.Poltras\Documents\ArcGIS\Projects\2025 Annual Report\Figures\Fig 1\_Project Location\Fig 1\_Project Location.aprx; 30-Jan-26

- LEGEND**
- Project Facility Location
  - North Baffin Planning Region
  - - - Nunavut Settlement Area
  - Qikiqtani Region

ᓄᓐᓇᓐ ᓄᓐᓇᓐ ᓄᓐᓇᓐ MARY RIVER PROJECT

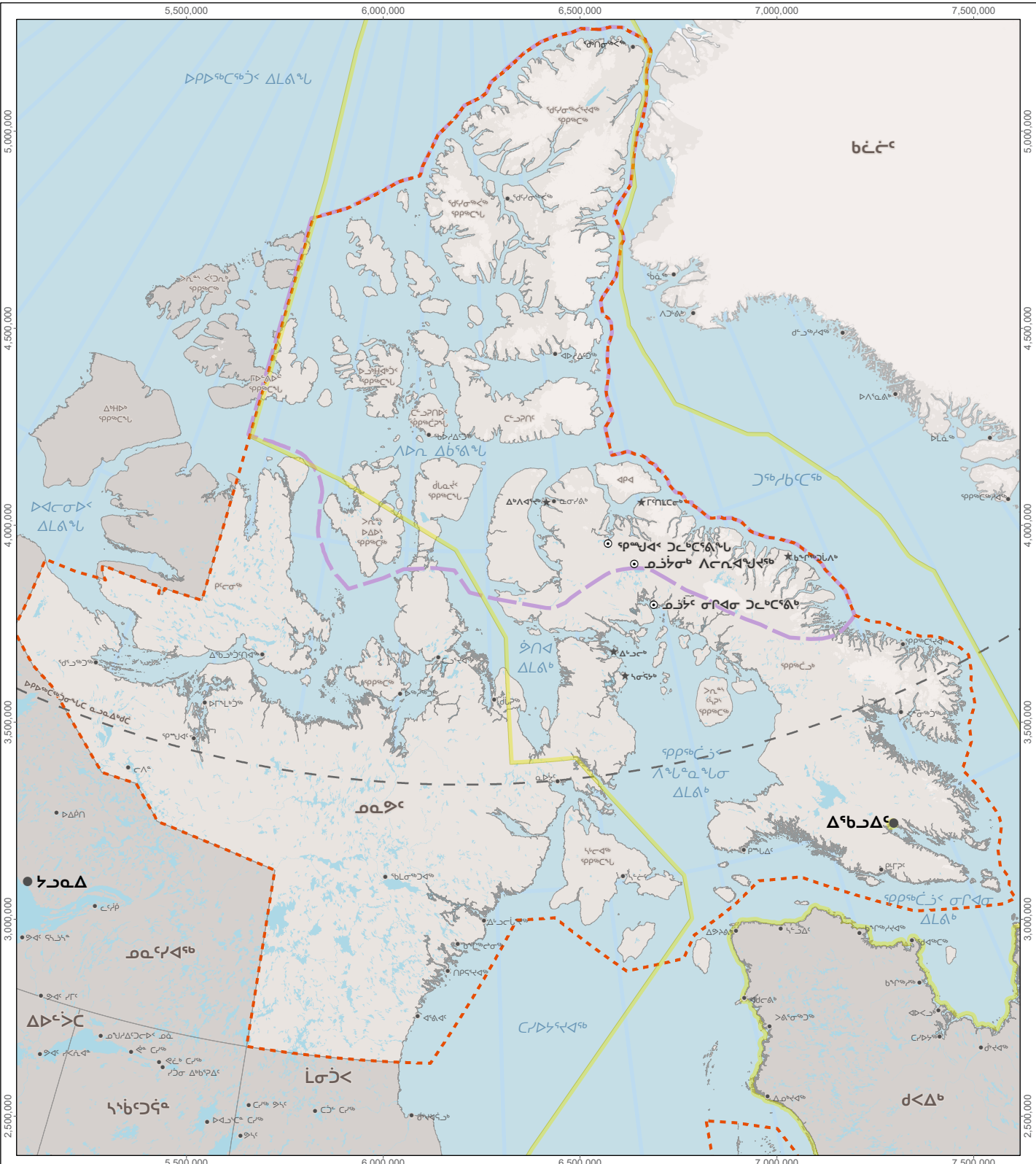
**Baffinland Iron Mines Project Location**

Projection: NAD 1983 STATISTICS CANADA LAMBERT.  
 Base Map: © King's Printer for Ontario, 2026.



ᓄᓐᓇᓐ ᓄᓐᓇᓐ  
**FIGURE 1**

SAVED: C:\Users\Krislina.Poltras\Documents\Annual Reports\Projects\Reporting\Annual Reports\Type A\2025\Fig\_1\_Project\_Location\Fig\_1\_Project\_Location.aprx: 17-Mar-26



- ᓄᓇᓂᓄᓐ ᐅᓂᓅᓂᓄᓐ**
- ⊙ ᐱᓕᓂᓄᓐ ᐅᓂᓅᓂᓄᓐ ᐱᓕᓂᓄᓐ ᐱᓕᓂᓄᓐ
  - ᓄᓄᓂᓄᓐ ᐅᓂᓅᓂᓄᓐ ᐱᓕᓂᓄᓐ ᐱᓕᓂᓄᓐ
  - ᓄᓄᓂᓄᓐ ᐱᓕᓂᓄᓐ ᐱᓕᓂᓄᓐ
  - ᓄᓄᓂᓄᓐ ᐱᓕᓂᓄᓐ

ᓄᓄᓂᓄᓐ ᐅᓂᓅᓂᓄᓐ MARY RIVER PROJECT

**ᐱᓕᓂᓄᓐ ᐅᓂᓅᓂᓄᓐ ᐱᓕᓂᓄᓐ**

ᓄᓄᓂᓄᓐ ᐱᓕᓂᓄᓐ: NAD 1983 STATISTICS CANADA LAMBERT  
 ᓄᓄᓂᓄᓐ ᐱᓕᓂᓄᓐ © ᐱᓕᓂᓄᓐ ᐱᓕᓂᓄᓐ ᐱᓕᓂᓄᓐ  
 ᐱᓕᓂᓄᓐ, 2026.

0 75 150 300 ᐱᓕᓂᓄᓐ  
 ᓄᓄᓂᓄᓐ ᐱᓕᓂᓄᓐ 1:14,000,000



ᓄᓄᓂᓄᓐ ᐱᓕᓂᓄᓐ  
 FIGURE 1



**LEGEND**

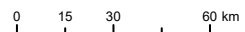
- ⊙ Project Facility Location
- Milne Inlet Tote Road
- Steensby Railway
- Crown Land
- Mineral Claims Held by Baffinland
- ▨ NTI Exploration Area
- ▭ Sirmilik National Park
- ▭ Mining Lease Boundary
- ▭ IOL Surface Only
- ▭ IOL Surface and Subsurface

ᓄᓐᓇᓐ ᓄᓐᓇᓐ ᓄᓐᓇᓐ

MARY RIVER PROJECT

**Mary River Project Activities Overview**

Projection: NAD 1983 UTM ZONE 17N.  
 Base Map: © King's Printer for Ontario, 2026.  
 Mineral Claims effective January 2026.



Scale 1:2,350,000



ᓄᓐᓇᓐ ᓄᓐᓇᓐ ᓄᓐᓇᓐ  
**FIGURE**



**ᓄᓇᓂᓗᑦ ᐅᓄᓐᓂᓐᓂᓐ**

<ul style="list-style-type: none"> <li>⊙ ᐱᑦᓂᓗᑦ ᐃᓂᓐᓂᓐᓂᓐ ᓇᓂᓐᓂᓐ</li> <li>— ᐅᓐᓂᓐᓂᓐ ᐃᓂᓐᓂᓐ</li> <li>— ᐃᓂᓐᓂᓐᓂᓐ ᓄᓇᓂᓐᓂᓐ ᐃᓂᓐᓂᓐ</li> <li>□ ᓄᓇᓂᓐ</li> <li>□ ᐅᓐᓂᓐᓂᓐ ᐃᓂᓐᓂᓐ ᓂᓗᓂᓐ ᐃᓂᓐᓂᓐ</li> <li>▨ ᓂᓗᓂᓐ ᐃᓂᓐᓂᓐ</li> </ul>	<ul style="list-style-type: none"> <li>▭ ᓂᓗᓂᓐ ᓂᓗᓂᓐ</li> <li>▭ ᐅᓐᓂᓐᓂᓐ ᐃᓂᓐᓂᓐ ᓂᓗᓂᓐ</li> <li>▭ ᐃᓂᓐᓂᓐ ᓄᓇᓂᓐᓂᓐ ᓂᓗᓂᓐ</li> <li>▭ ᐃᓂᓐᓂᓐ ᓄᓇᓂᓐᓂᓐ ᓂᓗᓂᓐ ᐃᓂᓐᓂᓐ</li> </ul>
--	--

**ᓄᓇᓂᓐᓂᓐ ᐅᓄᓐᓂᓐᓂᓐ** MARY RIVER PROJECT

**ᓄᓇᓂᓐ ᐃᓂᓐᓂᓐ ᐃᓂᓐᓂᓐ ᐃᓂᓐᓂᓐ**

ᓂᓗᓂᓐ ᓂᓗᓂᓐ: NAD 1983 UTM ZONE 17N.  
 ᓄᓇᓂᓐ ᐃᓂᓐᓂᓐ: © ᓂᓗᓂᓐ ᐃᓂᓐᓂᓐ ᐃᓂᓐᓂᓐ, 2026.

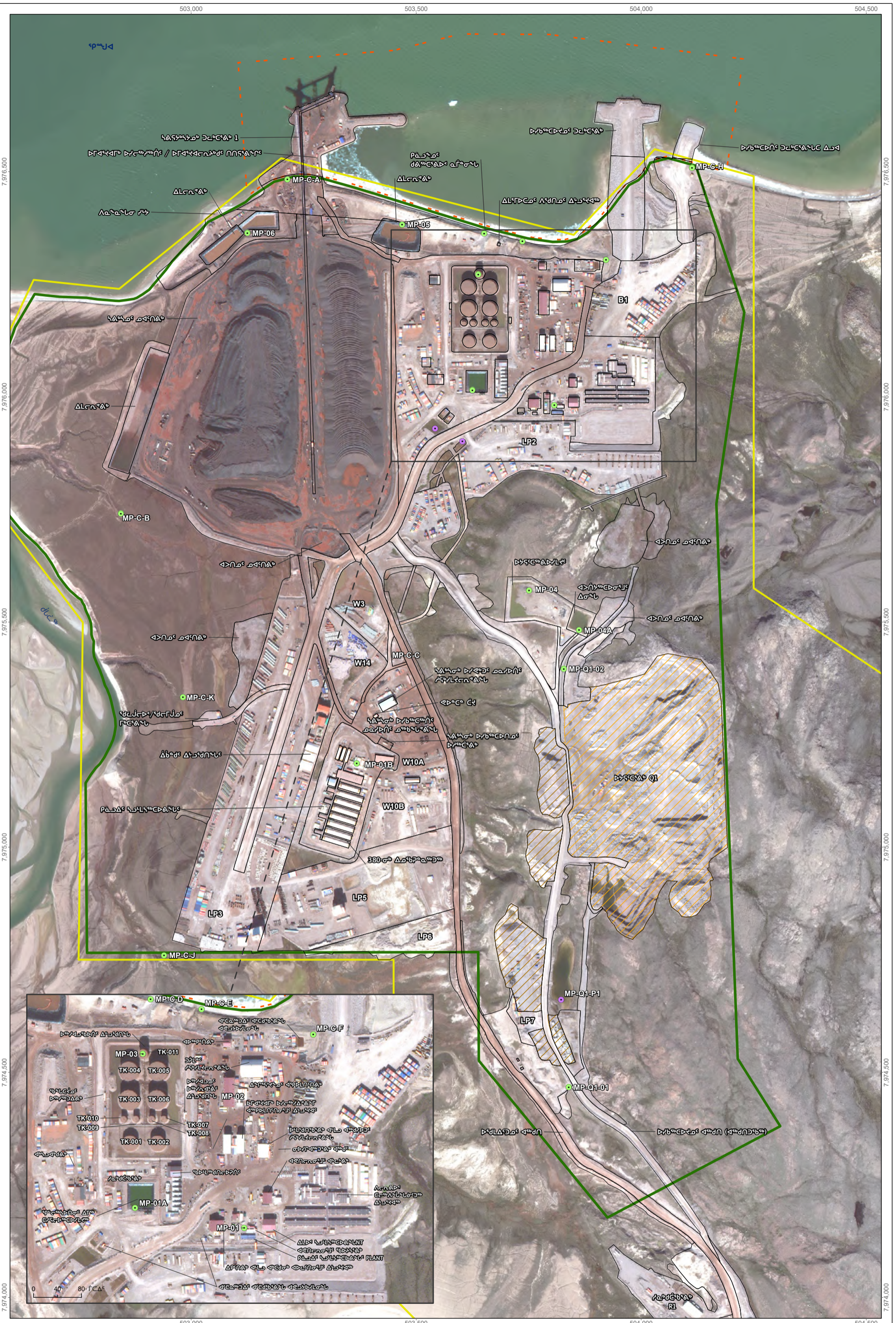
0 15 30 60 ᓂᓗᓂᓐ

ᓄᓇᓂᓐᓂᓐ 1:2,350,000

ᓂᓗᓂᓐ ᓂᓗᓂᓐ

**FIGURE 2**





Saved: C:\Users\Khalina.Patras\Documents\AccGIS\Projects\Reporting\Annual Reports\Type A\2025\Fig 3\_Mary River Project\_Site Layout\_2025.mxd, 17-Mar-25

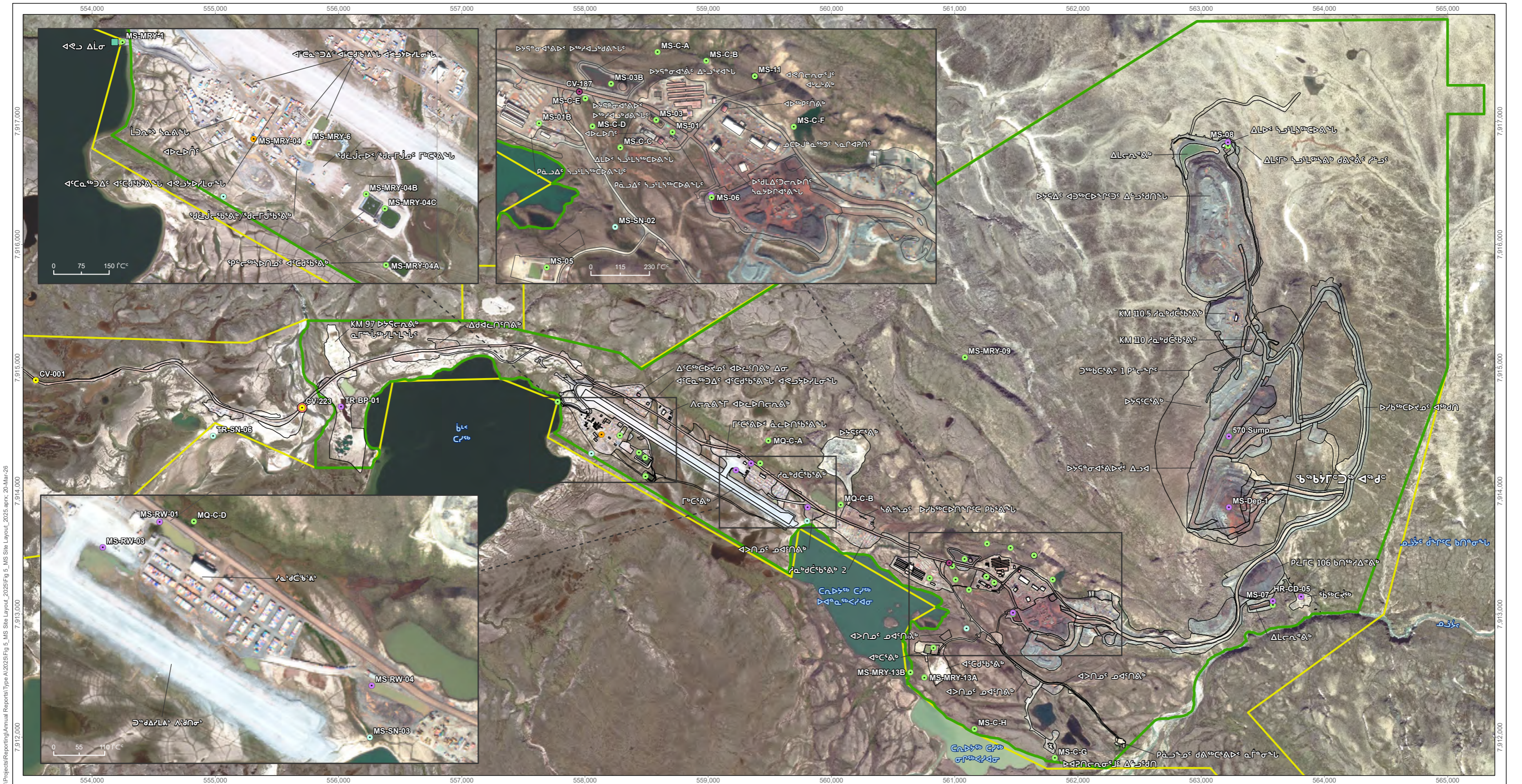
<p><b>ዕድሜ ስርዓት</b></p> <ul style="list-style-type: none"> <li><span style="color: red;">---</span> ስምጥር ስርዓት ስርዓት ስርዓት ስርዓት</li> <li><span style="border: 1px solid green; display: inline-block; width: 10px; height: 10px;"></span> ስርዓት ስርዓት</li> <li><span style="border: 1px solid yellow; display: inline-block; width: 10px; height: 10px;"></span> ስርዓት ስርዓት ስርዓት</li> <li><span style="border: 1px dashed orange; display: inline-block; width: 10px; height: 10px;"></span> ስርዓት ስርዓት ስርዓት ስርዓት</li> <li><span style="border: 1px solid black; display: inline-block; width: 10px; height: 10px;"></span> ስርዓት ስርዓት ስርዓት ስርዓት</li> </ul>	<p><b>የስርዓት ስርዓት</b></p> <ul style="list-style-type: none"> <li><span style="color: green;">●</span> ስርዓት ስርዓት ስርዓት</li> </ul>	<p><b>የስርዓት ስርዓት</b></p> <ul style="list-style-type: none"> <li><span style="color: purple;">●</span> ስርዓት ስርዓት ስርዓት ስርዓት</li> <li><span style="color: blue;">●</span> ስርዓት ስርዓት ስርዓት ስርዓት</li> </ul>
--	--	---

<p>ዕድሜ ስርዓት ስርዓት</p> <p><b>MARY RIVER PROJECT</b></p> <p><b>የግራብ ድንጋይ ስርዓት ስርዓት ስርዓት</b></p> <p>የግራብ ድንጋይ ስርዓት ስርዓት ስርዓት ስርዓት</p> <p>የግራብ ድንጋይ ስርዓት ስርዓት ስርዓት ስርዓት</p> <p>የግራብ ድንጋይ ስርዓት ስርዓት ስርዓት ስርዓት</p> <p>የግራብ ድንጋይ ስርዓት ስርዓት ስርዓት ስርዓት</p>	<p>0 25 50 100 150 200 ስርዓት</p> <p>የግራብ ድንጋይ ስርዓት ስርዓት ስርዓት ስርዓት</p> <p>1:8,000</p>	<p>N</p>
<p><b>Baffinland</b></p>	<p>የግራብ ድንጋይ ስርዓት ስርዓት ስርዓት ስርዓት</p> <p><b>FIGURE 3</b></p>	<p>3</p>









C:\Users\Krisztina.Petrasi\Documents\Projects\Reporting\Annual Reports\Type A\2025\Fig 5\_Mary River Project\Fig 5\_Mary River Project\_2025.aprx; 20-Mar-26  
 SAVED: C:\Users\Krisztina.Petrasi\Documents\Projects\Reporting\Annual Reports\Type A\2025\Fig 5\_Mary River Project\Fig 5\_Mary River Project\_2025.aprx; 20-Mar-26

- መሥሪያ ቤቶች**
- ለግብርና ለውጥ
  - ለግብርና ለውጥ
  - ለግብርና ለውጥ
  - ለግብርና ለውጥ
  - ለግብርና ለውጥ
  - ለግብርና ለውጥ
  - ለግብርና ለውጥ
  - ለግብርና ለውጥ
  - ለግብርና ለውጥ
  - ለግብርና ለውጥ
  - ለግብርና ለውጥ
  - ለግብርና ለውጥ
  - ለግብርና ለውጥ
  - ለግብርና ለውጥ
  - ለግብርና ለውጥ
- የክፍሎች**
- ለግብርና ለውጥ
  - ለግብርና ለውጥ
  - ለግብርና ለውጥ
  - ለግብርና ለውጥ
  - ለግብርና ለውጥ
  - ለግብርና ለውጥ
  - ለግብርና ለውጥ
  - ለግብርና ለውጥ
  - ለግብርና ለውጥ
  - ለግብርና ለውጥ
  - ለግብርና ለውጥ
  - ለግብርና ለውጥ
  - ለግብርና ለውጥ
  - ለግብርና ለውጥ
  - ለግብርና ለውጥ

- የክፍሎች**
- ለግብርና ለውጥ
  - ለግብርና ለውጥ
  - ለግብርና ለውጥ
  - ለግብርና ለውጥ
  - ለግብርና ለውጥ
  - ለግብርና ለውጥ
  - ለግብርና ለውጥ
  - ለግብርና ለውጥ
  - ለግብርና ለውጥ
  - ለግብርና ለውጥ
  - ለግብርና ለውጥ
  - ለግብርና ለውጥ
  - ለግብርና ለውጥ
  - ለግብርና ለውጥ
  - ለግብርና ለውጥ

- የክፍሎች**
- ለግብርና ለውጥ
  - ለግብርና ለውጥ
  - ለግብርና ለውጥ
  - ለግብርና ለውጥ
  - ለግብርና ለውጥ
  - ለግብርና ለውጥ
  - ለግብርና ለውጥ
  - ለግብርና ለውጥ
  - ለግብርና ለውጥ
  - ለግብርና ለውጥ
  - ለግብርና ለውጥ
  - ለግብርና ለውጥ
  - ለግብርና ለውጥ
  - ለግብርና ለውጥ
  - ለግብርና ለውጥ

**MARY RIVER PROJECT**

**የክፍሎች**

ገንዘብ: NAD 1983 UTM ZONE 17N  
 መሥሪያ ቤቱ: © 2025 PhotoSat Information Ltd.  
 ቀን: 2025  
 ስኬል: 1:30,000

በገጽ 5  
 FIGURE 5



