	Interim Closure and Reclamation Plan	Issue Date: March 31, 2016 Revision: 4	
	Environment	Document #: BAF-PH1-830-P16-0012	

Appendix C-

Site Photos of Current Site Condition

The information contained herein is proprietary Baffinland Iron Mines Corporation and is used solely for the purpose for which it is supplied. It shall not be disclosed in whole or in part, to any other party, without the express permission in writing by Baffinland Iron Mines Corporation.

Note: This is an UNCONTROLLED COPY. All staff members are responsible to ensure the latest revision is used

MARY RIVER MINE SITE



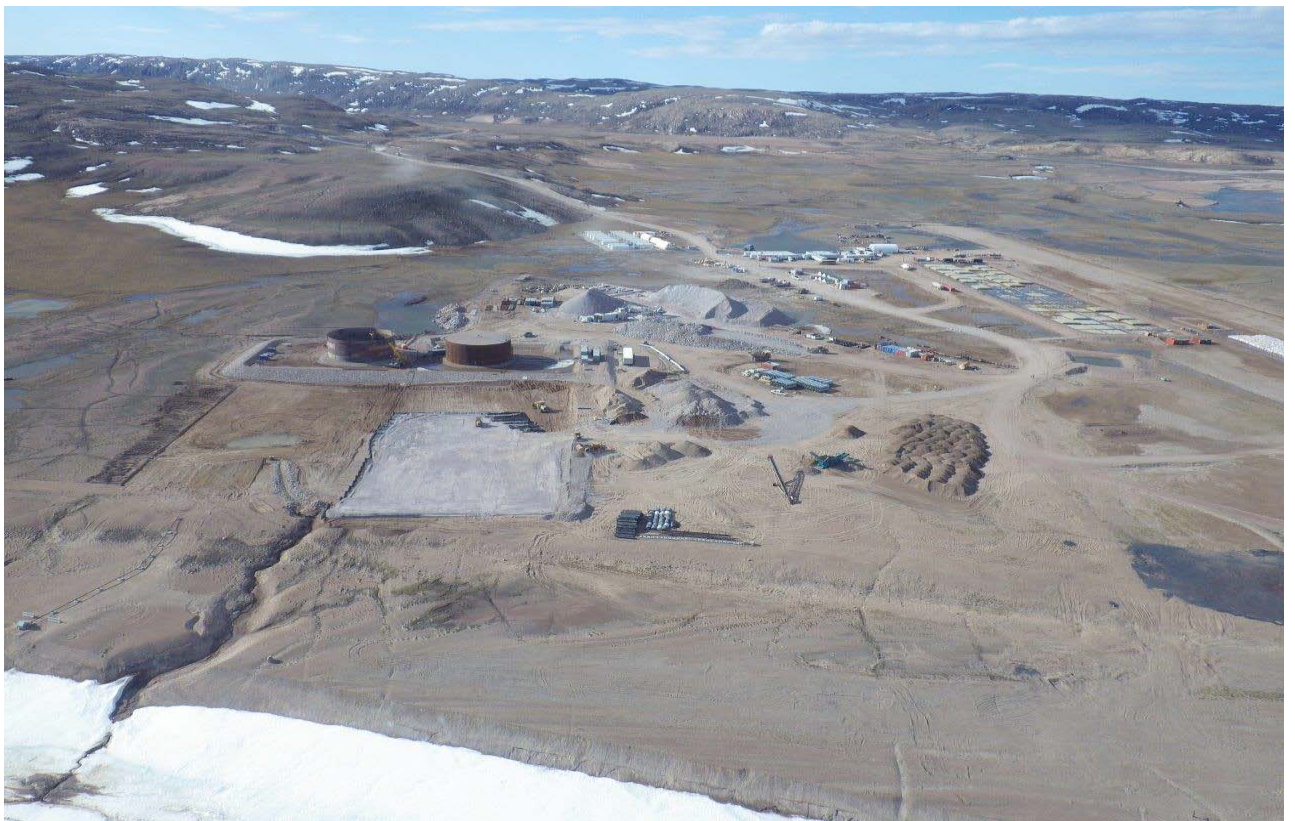








MILNE PORT



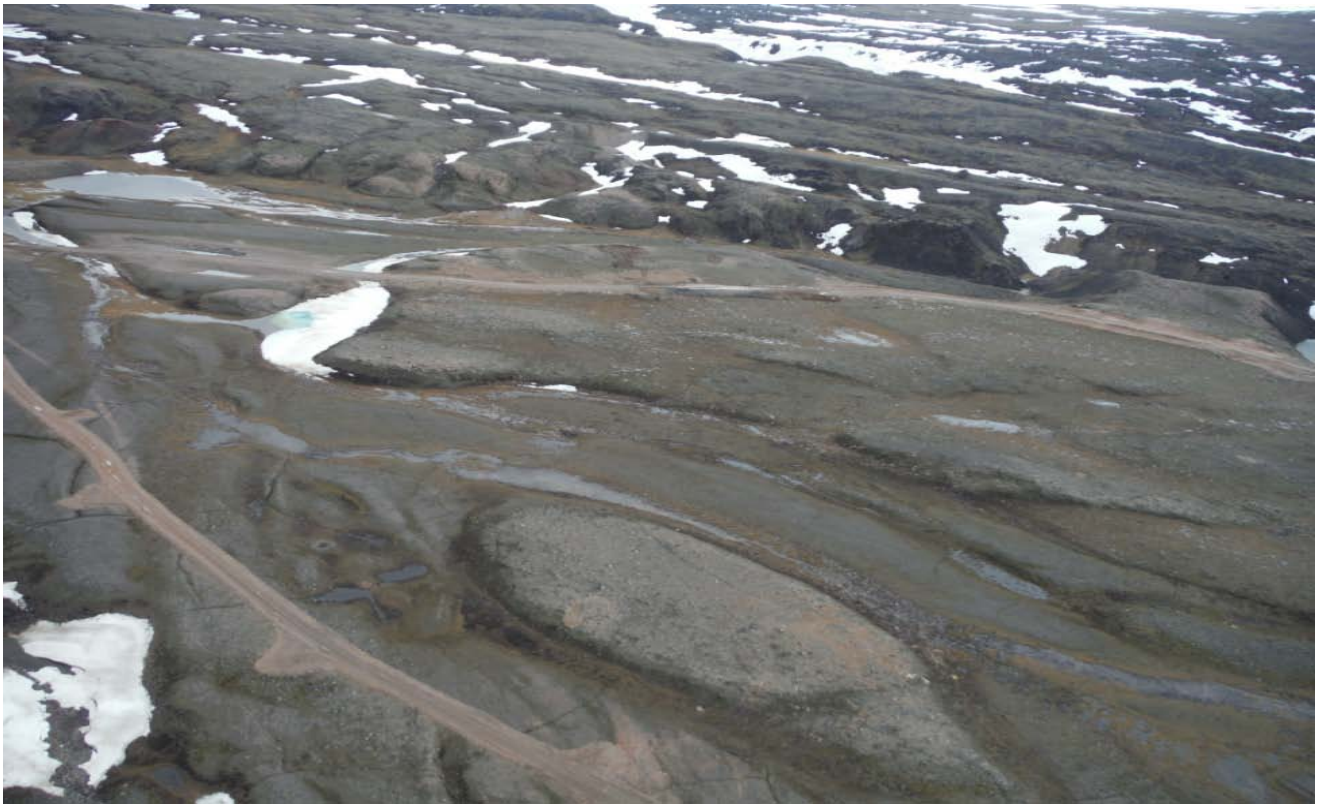








TOTE ROAD





STEENSBY CAMP





MID-RAIL CAMP

