

GENERAL NOTES
* Mechanical and Mobile equipment will be deassembled, decontaminated (if required), loaded and transported to a final disposal location.
* Non-hazardous waste and materials, and equipment will be disposed on-site.
* All material disposed of on site will be covered by 1.5 m of fill material.
* All hazardous materials and wastes will be removed from site to licensed disposal facilities.
* Grade and re-contour of all disturbed areas will include a placement of up to 0.5 m of aggregate material.

FUEL CONTAINMENT/STORAGE AREA and HAZARDOUS WASTE AREA/BERM
* Fuel tanks will be emptied and fuel collected. Tanks will be deassembled, decontaminated, loaded & transported to a final disposal location.
* Hazardous materials and wastes will be collected and transported off-site for final disposal.
* Soil contaminated with hydrocarbons will be transported to the on-site landfarm.
* Liners will be removed, loaded and transported to final disposal location.
* Disturbed area will be graded and re-contoured.

QUARRIES, BORROW PITS, and ORE/AGGREGATE STOCKPILES
* All borrow areas and quarries will be progressively reclaimed maintaining stable side slopes.
* Borrow areas, quarries and ore/Aggregate stockpiles will be graded and re-contoured.

HAZARDOUS WASTE CONTAINMENT BERM (EXISTING) 4551 m²
BARRELED FUEL LINED CONTAINMENT 5412 m²
HAZARDOUS WASTE CONTAINMENT AREA NEW 385 m²
LAYDOWN AREA 367637 m²
CONCRETE BATCH PLANT
BULK FUEL STORAGE FACILITY 5788 m²

QUARRIES, BORROW PITS, and ORE/AGGREGATE STOCKPILES
* All borrow areas and quarries will be progressively reclaimed maintaining stable side slopes.
* Borrow areas, quarries and ore/Aggregate stockpiles will be graded and re-contoured.

UTILITIES, INCLUDING:
• POWER GENERATION MODULE
• SEWAGE TREATMENT PLANT
• POTABLE WATER TREATMENT PLANT

CAMP INFRASTRUCTURE:
• ACCOMMODATION COMPLEX
• EMERGENCY RESPONSE
• MEDICAL CENTRE

PIPING (RAW WATER INTAKE and SEWAGE PIPING)
* Clean, plug, disassemble, load and transport pipe and associated infrastructure to final disposal location.

Buildings, Site Utilities, Laydown and Storage Areas
* Clear area, remove and secure items. Load and transport residual items to a final disposal location.
* Disassemble and/or demolish infrastructure including building utilities (pipelines and cables), decontaminate (if required), and load and transport to a final disposal location.
* Break-up or puncture slabs on grade.
* Grade and re-contour area to natural condition.

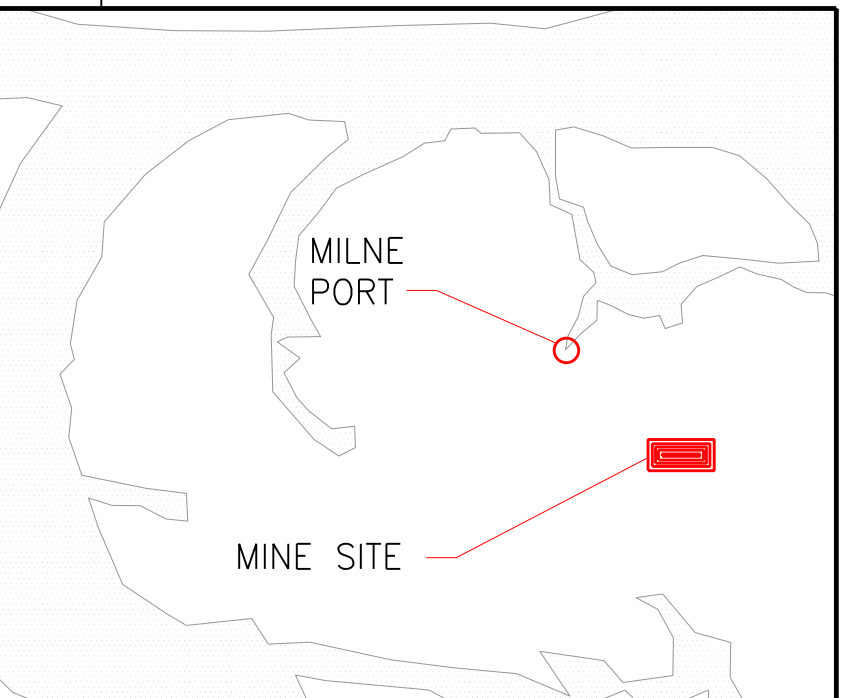
SITE SERVICE FACILITIES, INCLUDING:
• MAINTENANCE BUILDING
• WELDING SHOP
• WORKSHOP
• TOROMONT BUILDING

EXISTING LANDFILL ROAD
EXISTING LANDFILL 8750 m²
LANDFILL
* Landfill will be progressively covered with 1.5m of fill material.
* Disturbed area will be graded and re-contoured.

PONDS (PWSP, ORE CRUSHING SEDIMENTATION POND)
* Decant ponds and allow solids to dry. Dispose of the solid accordingly.
* Remove, load and transport liner to a final disposal location.
* Grade and re-contour pond's berm.

Crusher and Stockpile Pad
* Crusher will be disassembled, decontaminated, loaded and transported to a final disposal location.
* Break-up or puncturing of slabs on grade.
* Grade and re-contour area to natural condition.

SITE ROADS
* Remove, load and transport road crossing (culvert and bridges) to a final disposal location.
* Grade and re-contour area to natural conditions.



Revised
10/09/2014 11:37:29 AM

FOR INFORMATION

NOTES:
1. TOPOGRAPHY PROVIDED BY TERRAPOINT CANADA INC.
2. COORDINATE GRID IS SHOWN IN UTM (NAD83) ZONE 17 AND IS IN METRES.
3. CONTOURS ARE IN METRES. CONTOUR INTERVAL IS 1.5 METRES.
4. AS-CONSTRUCTED INFORMATION PROVIDED BY GENIVAR IN 2008.
5. QUANTITIES OF INFRASTRUCTURE INDICATED IS EXCLUSIVE OF ANY INFRASTRUCTURE OR EQUIPMENT CAPTURED ON THE MASTER BUILDING MATRIX (H349000-1000-00-144-00011, REV 3) AND/OR THE MECHANICAL EQUIPMENT AND MOTOR LIST (H349000-1000-50-144-0001, REV 0).

LEGEND:
WATER
QUARRY
LAYDOWN AREA (CONSTRUCTION PHASE)
EXISTING BORROW AREA (IOL COMMERCIAL LEASE)
EXISTING ROCK QUARRY (IOL COMMERCIAL LEASE)
ROAD
RIVER/STREAM/DRAINAGE
RAW WATER INTAKE PIPELINE
BAFFINLAND'S COMMERCIAL LEASE ON INUIT OWNED LAND

HATCH
DESIGNED BY C. LEISTNER
DATE 2014-06-16
CHECKED BY S. POTTER
DATE 2014-06-16
PROJ. DES. COORD. T. THERTELL
DATE 2014-06-16
PROJ. MGR. S. PERRY
DATE 2014-06-16
DRAWN BY C. LEISTNER
DATE 2014-06-16
DISCIP. ENGR. A. GRZEGORCZYK
DATE 2014-06-16
PROJ. ENGR. J. CLELAND
DATE 2014-06-16

Baffinland
MARY RIVER PROJECT
MINE SITE
INFRASTRUCTURE FOOTPRINT
LAYOUT FOR RECLAMATION
SCALE 1:15000
OR AS NOTED
DWG. NO. H349000-4000-00-015-0020
REV. C

| | | | | |
|------|---------------|-----------|------------|------|
| REV. | ISSUE FOR USE | ISSUE FOR | AUTH. BY | DATE |
| C | ISSUE FOR USE | C.L. A.G. | 2014/08/27 | |
| B | ISSUE FOR USE | C.L. A.G. | 2014/07/25 | |
| A | ISSUE FOR USE | C.L. A.G. | 2014/06/19 | |

ISSUE AUTHORIZATION

ORIGINAL SHEET SIZE: ISO A1 (841 x 594)

8/23/13 AM
8/26/2014
C:\projects\H349000-4000-00-015-0020.dgn
H349000-4000-00-015-0020.dgn