

Appendix I:
2015 Marginal Closure and Reclamation
Financial Security Estimate Addendum
(H349000-1000-07-126-0020) (Change)

**Baffinland Iron Mines Corporation
Mary River Project
2015 Marginal Closure and Reclamation Financial Security Estimate
Addendum**

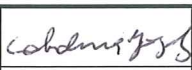

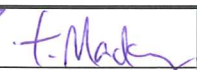
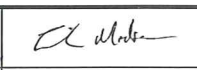
						
2014-12-12	0	Issued for Use	C. Gonzalez	A. Grzegorzczuk	T. Mackay	E. Madsen
Date	Rev.	Status	Prepared By	Checked By	Approved By	Approved By

Table of Contents

1. Purpose	1
2. 2015 Additional Activities and Closure and Reclamation Cost Estimate	1
2.1 2015 Planned Activities under 2015 Work Plan Addendum	1
2.2 2015 Planned Activities Not Previously Captured	3
3. 2015 Amendment Closure and Reclamation Cost Estimate	3
3.1 Closure Scenario	3
3.2 Assumptions	3
3.2.1 Direct Cost Assumptions	3
3.2.2 Indirect Cost Assumptions	7
3.2.3 Exclusions	8
4. 2015 Marginal Reclamation and Closure Security Cost Summary	9
5. Supporting Documents	12

List of Tables

Table 3-1: Summary of Marginal Increase of Disturbed Areas Requiring Grade and Re-Contour	4
Table 3-2: Summary of Marginal Increase of Storage Tanks with Associated Unit Rates	4
Table 3-3: Summary of Marginal Increase of Buildings and Foundation Areas with Associated Unit Rates	5
Table 3-4: Summary of Marginal Increase of Mechanical and Mobile Equipment with Associated Unit Rates	5
Table 3-5: Summary of Marginal Increase of Packaged Equipment with Associated Unit Rates	6
Table 3-6: Summary of Marginal Increase of Packaged Equipment with Associated Unit Rates	6
Table 4-1: Mary River Project Total Closure and Reclamation Security Summary ¹	10
Table 4-2: 2015 Estimated Closure and Reclamation Security Detailed Summary ¹	11

List of Appendix

Appendix A : Estimate Breakdown Structure (EBS) for 2015 Work Plan Addendum

Appendix B : Updated Site Layouts

Appendix C : Supporting Documentation

1. Purpose

The purpose of this document is to provide a summary of the additional financial security estimated to be required for work items described in the Mary River Project 2015 Work Plan Addendum or identified by relevant stakeholders as having a financial security impact that had not already been captured in previous estimates¹. The marginal increase proposed in this report is in addition to the marginal increase already proposed in the 2015 Marginal Closure and Reclamation Financial Security Estimate (H349000-1000-07-126-0019, Rev 0) that was developed to consider the 2015 Work Plan (original submission).

The description of the additional work activities are described in the Baffinland 2015 Work Plan Addendum. The process, applied rates, and regulatory context remain consistent as outlined in Section 1.2, 1.3, and 2.0 of the 2015 Marginal Closure and Reclamation Financial Security Estimate (H349000-1000-07-126-0019, Rev 0), respectively. Any items that were identified by relevant stakeholders as having a financial security impact but were not captured in previous estimates is outlined in Section 2.2.

The following outlines the structure of the 2015 Marginal Closure and Reclamation Financial Security Estimate Addendum (hereafter known as the '2015 Security Addendum'):

- Section 2 describes planned marginal activities captured under 2015 Security Addendum. Section 2.1 describes the captured activities associated with 2015 Work Plan Addendum and Section 2.2 captures items that were identified by relevant stakeholders as having a financial security impact but were not captured in previous estimates.
- Section 3 details the assumptions adopted for the purpose of the financial security estimate and their respective cost implications.
- Section 4 summarizes the cost associated with this addendum and the impact on the overall 'global' Mary River Project Financial Security Estimate.
- Section 5 lists supporting documentation that was used to determine costs and quantities for the purpose of the 2015 Security Addendum.

2. 2015 Additional Activities and Closure and Reclamation Cost Estimate

2.1 2015 Planned Activities under 2015 Work Plan Addendum

As described in both the 2015 Work Plan (Baffinland, October 31, 2014) and the 2015 Work Plan Addendum (Baffinland, December 12, 2014), additional planned work in 2015 is being conducted under the amended Project Certificate No.005, QIA Commercial Lease No.

¹ Previous reclamation security estimated for the Project is described in the 2014 Complete Project Financial Security Assessment (H349000-1000-07-126-0018, Rev. 1), and 2015 Marginal Closure and Reclamation Financial Security Estimate (H349000-1000-07-126-0019, Rev. 0)

Q13C301, Type 'A' Water Licence 2AM-MRY1325 and Type 'B' Water Licence 8BC-MRY1416.

Work items described in the Mary River Project 2015 Work Plan Addendum that had not already been previously captured include:

Mine Site

- Earthworks including extensions to existing accommodation pad, power generation pad and crusher pad to support one additional crusher spread.
- Earthworks to construct pads for ore haul workshop, truck wash facility, construction office and light vehicle parking lot.
- Construct concrete slabs and foundations for the ore haul workshop and welding shop extension. Construct concrete foundations and sump for truck wash building.
- Commence construction of the ore haul workshop, welding shop extension and ore haul truck wash building.
- Construction of a detour road around the existing facilities connecting the crusher pad to the Tote road.
- Expand the existing accommodation complex with additional 172 beds, including mine dry facilities, recreational and dining facilities.
- Install additional sewage treatment capacity.
- Modifications to increase capacity of existing potable water treatment plant.

Milne Inlet

- Earthworks including minor pads for maintenance shop, welding shop, truck wash building, as well as additional laydown area required as storage for 2015 Sealift equipment, supplies and materials.
- Construct concrete slabs and foundations for the maintenance shop and welding shop extension. Exterior concrete foundations and sump for truck wash building.
- Commence construction of the maintenance shop, welding shop extension and truck wash facility.
- Expand the existing accommodation complex with additional 120 beds, including mine dry facilities, recreational and dining facilities.
- Upgrade the existing sewage treatment plant.
- Modifications to increase capacity of existing potable water treatment plant.
- Install an additional hazardous waste containment cell.

2.2 2015 Planned Activities Not Previously Captured

As a secondary objective, the 2015 Security Addendum is intended to capture any items that were identified by relevant stakeholders as having a financial security impact but did not have a cost allocation previously. Items considered are:

- Additional Mobile Fuel Tanks (See 3.2.1.3 for more information).
- Mary River Mine Site Landfill Expansion (See 3.2.1.6 for more information).

3. 2015 Amendment Closure and Reclamation Cost Estimate

The marginal closure and reclamation financial security cost estimated to be required to account for the additional activities described in Section 2.1 and Section 2.2 is summarized in Section 4 and presented in Appendix A.

The 2015 Security Addendum to support the 2015 Work Plan Addendum (Baffinland, December 12, 2014) has been developed in accordance with principles, methodology, and closure objectives defined within the Mary River Project Interim Mine Closure and Reclamation Plan (BAF-PH1-830-P16-0012).

The 2015 Security Addendum was developed using the same set of assumptions, methodologies and outcomes used to determine the site specific unit costs and final direct and indirect costs allowances as described in the 2015 Marginal Reclamation and Closure Security Estimate (H349000-1000-07-126-0019, Rev 0).

3.1 Closure Scenario

The 2015 Security Addendum is based on a scenario that assumes all planned activities for 2015 Work Plan Addendum have taken place on site and all material/consumables (excluding fuel) that are mobilized to site in 2015 are in full inventory.

3.2 Assumptions

3.2.1 Direct Cost Assumptions

The following sections describe the assumptions used to establish the direct costs allocated in the 2015 Security Addendum. Please refer to Appendix A for details of this cost allocation based on the Estimate Breakdown Structure, Appendix B for locations of below noted facilities, and Appendix C for supporting documentation relating to estimated unit quantities.

All total dollar figures were rounded to nearest '000.

All costs in Canadian Dollars (CAD).

3.2.1.1 Grade and Re-Contour

The 2015 Security Addendum estimate allocates an additional \$266,000 in direct costs to account for a marginal increase of disturbed areas that would have to be graded and re-contoured in an unforeseen closure scenario. This cost allocation is based on an additional 147,100 m² of disturbed areas not considered in previous estimates at a unit rate of \$1.81/m².

A summary of the marginal increase of costs associated with disturbed areas that would have to be graded and re-contoured in an unforeseen closure scenario is shown in Table 3-1.

Table 3-1: Summary of Marginal Increase of Disturbed Areas Requiring Grade and Re-Contour

Marginal Areas Requiring Grading and Re-Contouring	Unit Rate (\$/m ²)	Quantity (m ²)	Cost (\$)¹
Additional sealift laydown area at Milne Port	1.81	72,000	130,000
Crusher extension road at Mine Site		36,180	65,000
Additional site roads at Mine Site		1,120	2,000
Accommodation pad extension at Mine Site – West side		9,000	16,000
Accommodation pad extension at Mine Site – East Side		2,700	5,000
Utility pad extension at Mine Site (North West)		3,500	6,000
Utility pad extension at Mine Site (South West)		1,800	3,000
Infill between service and utility pads at Mine Site		20,800	38,000
TOTAL		147,100	266,000

¹ Rounded to nearest '000

3.2.1.2 Liner Removal

The 2015 Security Addendum allocates an additional \$3,000 in direct costs to account for a marginal increase of area that would have to have liner removed in an unforeseen closure scenario. This cost allocation is based on an additional 972 m² of area with liner not considered in previous estimates at a unit rate of \$3.50/m². This area is attributed to:

- Hazardous Waste Berm at Milne Port – 972 m².

NOTE: The 2015 Security Addendum does not included a direct cost associated with the grade and re-contouring of this area as it is planned to be constructed in an already developed laydown that was captured in the 2014 Complete Project Financial Security Assessment (H349000-1000-07-126-0018, Rev. 1). See Appendix B for location of the above noted facility.

3.2.1.3 Storage Tank Reclamation

The 2015 Security Addendum allocates an additional \$89,000, plus cover material application costs, to account for the marginal increase of storage tanks (non-fuel) associated with 2015 Work Plan Addendum. A summary of the marginal increase of security cost associated with storage tanks is shown in Table 3-2.

Table 3-2: Summary of Marginal Increase of Storage Tanks with Associated Unit Rates

Unit Rate Type	Unit Rate (\$/pcs)	Quantity (pcs)	Cost (\$)¹
Light Tanks	2,148.33	14	30,000
Medium Tanks²	7,387.31	8	59,000
TOTAL			89,000

¹ Rounded to nearest '000

²The 2015 Marginal Reclamation and Closure Security Estimate (H349000-1000-07-126-0019 Rev 0), Section 6.1.3 outlines the unit cost rate development for reclamation of a medium mobile diesel tank.

3.2.1.4 *Buildings and Foundations*

The 2015 Security Addendum allocates an additional \$1,372,000, plus cover material application costs, in direct costs to account for a marginal increase of buildings and foundations associated with the 2015 Work Plan Addendum. This marginal increase of buildings and foundations is itemized in the 2015 Work Plan Addendum – Master Building Matrix (H349001-1000-00-144-0001) as presented in Appendix C. This cost allocation is based on an additional footprint of buildings and foundations of 19,122 m². A summary of security costs associated with the marginal increase of buildings and foundations is shown in Table 3-3.

Table 3-3: Summary of Marginal Increase of Buildings and Foundation Areas with Associated Unit Rates

Unit Rate Type	Unit Rate (\$/m ²)	Quantity (m ²)	Cost (\$)¹
Modular Building – Not Contaminated	59.38	8,027	477,000
Modular Building – Contaminated	143.42	3,107	446,000
Foldaway Building – Contaminated	142.41	1,895	270,000
Demolish Pre-cast Foundation	38.47	2,267	87,000
Reclamation of Slab on Grade	33.11	1,041	34,000
Reclamation of Timber Cribbing	20.78	2,786	58,000
TOTAL			1,372,000

¹ Rounded to nearest '000

Refer to Appendix A for an item by item breakdown of the allocation of direct cost relating to building and foundation reclamation and Appendix C for the 2015 Work Plan Addendum – Master Building Matrix (H349001-1000-00-144-0001).

3.2.1.5 *Mechanical and Mobile Equipment*

The 2015 Security Addendum allocates an additional \$605,000, plus cover material application costs, in direct costs to account for a marginal increase of mechanical and mobile equipment as itemized in the 2015 Work Plan Addendum – Mechanical and Mobile Equipment (H349001-1000-50-144-0001). This cost allocation is based on an additional 137 pieces of mechanical or mobile equipment. A summary of the marginal increase of costs associated with mechanical or mobile equipment and associated unit rates is shown in Table 3-4.

Table 3-4: Summary of Marginal Increase of Mechanical and Mobile Equipment with Associated Unit Rates

Unit Rate Type	Unit Rate (\$/pcs)	Quantity (pcs)	Cost (\$)¹
Heavy Equipment	41,205.45	8	330,000
Medium Equipment	4,261.34	3	13,000
Light Equipment	1,980.80	1	2,000

Unit Rate Type	Unit Rate (\$/pcs)	Quantity (pcs)	Cost (\$)¹
Heavy Mobile Equipment	2,618.87	79	207,000
Medium Mobile Equipment	1,494.13	19	28,000
Light Mobile Equipment	941.09	27	25,000
TOTAL			605,000

¹ Rounded to nearest '000

Refer to Appendix A for an item by item breakdown of the allocation of direct cost relating to mechanical or mobile equipment reclamation and Appendix C for the 2015 Work Plan Addendum – Mechanical and Mobile Equipment List (H349001-1000-50-144-0001).

3.2.1.6 Packaged Equipment (Vendor Packages)

The 2015 Security Addendum allocates an additional \$21,000, plus cover material application costs, to account for the marginal increase of packaged equipment associated with 2015 Work Plan Addendum. Packaged equipment associated with the 2015 Work Plan Addendum is associated with the upgrade of the Mine Site Potable Water and Sewage Treatment Systems. A summary of the marginal increase of security cost associated this packaged equipment is shown in Table 3-5.

Table 3-5: Summary of Marginal Increase of Packaged Equipment with Associated Unit Rates

Unit Rate Type	Unit Rate (\$/pcs)	Quantity (pcs)	Cost (\$)¹
Potable Water System	9,975.93	1	10,000
Sewage Treatment Plant	11,035.58	1	11,000
TOTAL			21,000

¹ Rounded to nearest '000

3.2.1.7 Fill application

The 2015 Security Addendum allocates an additional \$382,000 to account for application of cover material due to the marginal increase of demolition materials to be disposed of on-site and the planned expansion of the Mary River Mine Site Landfill. This cost allocation is based on an additional 8,617 m² of compacted material requiring fill application at an assumed disposal depth of six (6) meters. A summary of the marginal increase of fill application in the 2015 Security Addendum is shown in Table 3-6.

Table 3-6: Summary of Marginal Increase of Packaged Equipment with Associated Unit Rates

Unit Rate Type	Unit Rate (\$/m ²)	Quantity (m ²)	Cost (\$)¹
Fill Application – Demolition Materials	44.37	4,142	184,000
Fill Application – Landfill Expansion		4,475	199,000
TOTAL			382,000

¹ Rounded to nearest '000

3.2.2 Indirect Cost Assumptions

The following section describes the assumptions used to establish the indirect costs allocated for the purpose of the 2015 Security Addendum. Unless noted otherwise, see the 2014 Complete Project Financial Security Assessment (H349000-1000-07-126-0018, Rev. 1) for further supporting information on the specific indirect unit rates and multipliers used below.

3.2.2.1 On-Site Fuel Demobilization and Reclamation Fuel Mobilization

The 2015 Security Addendum allocates an additional \$55,000 to account for the mobilization of fuel required for the marginal increase in reclamation activities captured in the 2015 Work Plan Addendum. No additional cost has been allocated in the 2015 Security Addendum for the de-mobilization of fuel as there is no increase of fuel storage on-site.

The additional \$55,000 allocation for fuel mobilization is based on the cost of mobilizing 50% of the fuel required for marginal reclamation and closure activities, including direct activities, power generation, and heat production. Direct marginal reclamation activities are estimated to require 130,142L of Type-1 fuel (see Appendix A). Marginal increases in camp operation during reclamation is estimated to require an additional 1,270 person-days on-site. Each person-day on site is assumed to consume 116L of Type-1 fuel for heat and power generation. Fuel mobilization rate is assumed to be \$0.40/L.

See Appendix A for itemized person-day and fuel consumption quantities.

3.2.2.2 Mobilization of Workers Required for Reclamation

The 2015 Security Addendum allocates an additional \$105,000 for worker mobilization. Detailed assumptions for mobilization of workers required for marginal closure and reclamation activities are:

- Person-hours required to complete direct cost related on-site marginal reclamation activities is estimated to be 12,698 hrs or 1,270 person-days (based on 10hr/day productivity). See Appendix A for itemized person-day allocations.
- Assume 70% of hires (889 person-days) are from southern communities and 30% (381 person-days) are from northern communities.
- Cost per person-day on site for worker mobilization from southern communities is \$85.45/person-day on-site.
- Cost per person-day on site for worker mobilization from northern communities is \$75.00/person-day on-site

3.2.2.3 Worker Accommodation & Camp Operation

The 2015 Security Addendum allocates an additional \$286,000 for worker accommodation and camp operation during marginal reclamation activities associated with the 2015 Work Plan Addendum. Assumptions for worker accommodation and camp operation are:

- Person-hours required to complete direct cost related on-site marginal reclamation activities is estimated to be 12,698 hrs or 1,270 person-days (based on 10hr/day productivity). See Appendix A for itemized person-day allocations.

- Cost for accommodation and camp operation is assumed to be \$225.50/person-day and includes camp maintenance, catering, housekeeping, and fuel costs.

3.2.2.4 *Mobilization and Demobilization of Equipment and Materials*

The 2015 Security Addendum allocates an additional \$274,000 to account for mobilization and demobilization of equipment and materials. These are indirect costs for moving equipment and materials to and from the reclamation site. The amount is based on Baffinland and Hatch's conservative assumption that mobilization and demobilization cost are estimated as 10% of total direct costs.

3.2.2.5 *Engineering Fees*

The 2015 Security Addendum includes an engineering, design and execution planning indirect cost allowance of \$107,000 or 3.9% of the total direct costs.

3.2.2.6 *Supervision, Project Management and Contract Administration*

The 2015 Security Addendum includes a project supervision, management and contract administration indirect cost allowance of \$257,000 or 9.4% of total direct costs, contaminated soil treatment costs, and post-closure monitoring costs. Project supervision, management and contract administration indirect costs include, but are not limited to:

- Contract strategy, administration and expediting;
- Construction logistics, planning, scheduling, supervision and manpower forecasts;
- Labour relations, safety;
- Field office management, temporary facilities;
- Materials receiving and warehousing;
- Progress monitoring, trending and reporting;
- Cost performance monitoring, trending and claims processing; and
- Quality assurance.

3.2.2.7 *Contingency*

The 2015 Security Addendum Estimate includes an additional contingency of \$425,000 or 12.5% of the total of direct costs, mobilization and demobilization of equipment and materials costs, worker accommodation and camp operation costs, and mobilization of workers costs.

3.2.3 *Exclusions*

The listed activities are recognized by Baffinland as being required to be conducted in an unforeseen closure and reclamation scenario but additional costs have not been included in the 2015 Security Addendum. No costs were allocated on the basis that it is Baffinland's position that the additional 2015 Work Plan Addendum activities do not warrant additional cost allocations for these activities. For detail on the indirect cost allocations attributed to these activities to date in previous estimates, see 2015 Marginal Closure and Reclamation

Financial Security Estimate (H349000-1000-07-126-0019, Rev. 0). Activities excluded from the 2015 Security Addendum are:

- Off-Site Disposal of Hazardous and Non-Hazardous Waste.
- Contaminated Soil Treatment.
- Closure and Post Closure Monitoring.

4. **2015 Marginal Reclamation and Closure Security Cost Summary**

Table 4-1 presents the total closure and reclamation security posted to-date and proposed adjustments to be posted as a result of the 2014 Complete Project Financial Security Assessment (Column D), the 2015 Marginal Reclamation and Closure Security Estimate (Column F) and the 2015 Security Addendum (Column G). Table 4-2 presents a summary of the 2015 Security Addendum to support the 2015 Work Plan Addendum (Baffinland, December 12, 2014) in a categorized breakdown format.

Table 4-1: Mary River Project Total Closure and Reclamation Security Summary¹

	A	B	C	D	E	F	G	H	I
	Authorization	Liability	Pre-baseline Liability (\$)	2014 Re-Baseline ² (\$)	Difference (\$)	Marginal 2015 (\$)	2015 Security Addendum (\$)	Total (\$)	Adjustment to be posted (\$)
					D-C			D+F+G	E+F+G-Type B construction
1	Type A 2AM-MRY1325	IOL	40,231,000	38,886,000	(1,345,000)	2,236,000	4,248,000	45,370,000	4,992,000
2		Crown	166,000	-	(166,000)	-	0	0	(166,000)
3		Water	2,172,000	2,193,000	21,000	-	21,000	2,214,000	42,000
4		Land	38,225,000	36,693,000	(1,532,000)	2,236,000	4,227,000	43,156,000	4,784,000
5	Subtotal Type A		40,397,000	38,886,000	(1,511,000)	2,236,000	4,248,000	45,370,000	4,826,000
6	Type B Construction 2BC-MRY1416	IOL	147,000	See note 3	-	-	-	-	-
7		Crown	-		-	-	-	-	-
8		Water	-		-	-	-	-	-
9		Land	147,000		-	-	-	-	-
10	Subtotal Type B Construction		147,000		-	-	-	-	-
11	Type B Exploration 2BE-MRY1421	IOL	165,000	165,000	-	-	-	165,000	-
12		Crown	1,082,000	1,082,000	-	-	-	1,082,000	-
13		Water	18,000	18,000	-	-	-	18,000	-
14		Land	1,229,000	1,229,000	-	-	-	1,229,000	-
15	Subtotal Type B Exploration		1,247,000	1,247,000	-	-	-	1,247,000	
16	DFO	IOL	-	-	-	-	-	-	-
17		Crown	3,566,000	3,566,000	-	-	-	3,566,000	-
18		Water	3,566,000	3,566,000	-	-	-	3,566,000	-
19		Land	-	-	-	-	-	-	-
20	Subtotal DFO		3,566,000	3,566,000	-	-	-	3,566,000	-
21	AANDC Land Lease 47H/16-1-2	IOL	-	-	-	-	-	-	-
22		Crown	-	5,931,000	5,931,000	-	-	5,931,000	5,931,000
23		Water	-	-	-	-	-	-	-
24		Land	-	5,931,000	5,931,000	-	-	5,931,000	5,931,000
25	Subtotal AANDC Land Lease		-	5,931,000	5,931,000	-	-	5,931,000	5,931,000
27	GRAND TOTAL		45,357,000	49,630,000	4,420,000	2,236,000	\$4,248,000	56,114,000	10,757,000

¹ All totals rounded to nearest '000 in CAD

² '2014 Re-baseline' refers to 2014 Complete Project Financial Security Assessment, H349000-1000-07-126-0018, Rev. 1

³ The reclamation costs associated to the Type 'B' Water Licence 2BC-MRY1416 was captured under 2014 Complete Project Financial Security Assessment. The current sum of \$147,000 posted under this licence is proposed to be reallocated under Type 'A' Water licence 2AM-MRY1325 upon amendment.

Table 4-2: 2015 Estimated Closure and Reclamation Security Detailed Summary¹

Cost	2014 Re-Baseline (\$) ²	2015 Marginal (\$)	2015 Security Addendum	Total for 2015 (\$)	IOL	Crown Land	Water Liability	Land Liability
Direct Cost								
Project Wide	873,000	54,000	184,000	1,110,000	1,110,000	-	-	1,110,000
Milne Port	9,931,000	-	759,000	10,690,000	6,860,000	3,830,000	227,000	10,463,000
Construction Facilities & Services	2,731,000	-	36,000	2,768,000	2,768,000	-	-	2,768,000
Mine Site	6,671,000	772,000	1,757,000	9,201,000	9,201,000	-	1,136,000	8,065,000
Tote Road	4,042,000	76,000	3,000	4,120,000	4,120,000	-	-	4,120,000
Mary River Exploration Activities	1,022,000	-	-	1,022,000	135,000	887,000	15,000	1,007,000
Total Direct Costs (\$)	25,270,000	902,000	2,739,000	28,911,000	24,194,000	4,717,000	1,378,000	27,533,000
Indirect Cost								
Off-Site Disposal of Waste & Material	1,969,000	-	-	1,969,000	1,969,000	-	-	1,969,000
Fuel Mobilization and Demobilization	3,098,000	33,000	55,000	3,186,000	3,186,000	-	-	3,186,000
Ammonium Nitrate (explosive material)	876,000	553,000	-	1,429,000	1,429,000	-	-	1,429,000
Contaminated Soil Treatment	234,000	-	-	234,000	234,000	-	-	234,000
Mobilization of Workers Required for Reclamation	996,000	54,000	105,000	1,155,000	998,000	157,000	-	1,155,000
Worker Accommodation & Camp Operation	2,630,000	148,000	286,000	3,064,000	2,649,000	415,000	-	3,064,000
Mobilization and Demobilization of Equipment and Materials by Sealift	2,425,000	90,000	274,000	2,789,000	2,406,000	383,000	-	2,789,000
Geotechnical Inspections	150,000	-	-	150,000	150,000	-	-	150,000
Project Environmental Site Assessment	90,000	-	-	90,000	90,000	-	-	90,000
Closure & Post Closure Monitoring	851,000	-	-	851,000	851,000	-	851,000	-
Engineering Fees	946,000	35,000	107,000	1,088,000	939,000	149,000	-	1,088,000
Supervision, Project Management & Contract Administration	2,381,000	165,000	257,000	2,803,000	2,427,000	376,000	-	2,803,000
Contingency	3,923,000	256,000	425,000	4,604,000	3,984,000	620,000	-	4,604,000
Mary River Exploration Activities	225,000	-	-	225,000	30,000	195,000	3,000	222,000
DFO Financial Security for Ore Dock	3,566,000	-	-	3,566,000	0	3,566,000	3,566,000	-
Total Indirect Costs (\$)	24,360,000	1,334,000	1,509,000	27,203,000	21,341,000	5,862,000	4,420,000	22,783,000
Total Cost (\$)	49,630,000	2,236,000	4,248,000	56,114,000	45,535,000	10,579,000	5,798,000	50,316,000

¹ All totals rounded to nearest '000 in CAD

² 2014 Re-baseline refers to 2014 Complete Project Financial Security Assessment, H349000-1000-07-126-0018, Rev. 1

5. Supporting Documents

In addition to information presented within this document, please refer to the following appendices for supporting information:

- Refer to Appendix A for 2015 Security Addendum Estimate Breakdown Structure.
- Refer to Appendix B for updated 2015 Work Plan Amendment Layouts of Milne Port and Mary River Mine Site.
- Refer to Appendix C for supporting documentation used for estimated quantities. Included is the 2015 Work Plan Addendum – Mechanical and Mobile Equipment (H349001-1000-50-144-0001) and 2015 Work Plan Addendum – Master Building Matrix (H349001-1000-00-144-0001).

AG:ag

Appendix A: Estimate Breakdown Structure (EBS) for 2015 Work Plan Addendum

Level 0 - Site Location	Level 0 - Description	Level 1 - Area	Level 1 - Description	Level 2 - Facility / System	Level 2 - Description	Level 3 - Sub Facility / Sub System	Level 3 - Description	Equipment Type	Price Code	Price Code Description	Qty Code	Area - QTY Code	QTY Code Description	Type	Description	Tag Number	QTY	Unit	Manhours Per Unit	Unit Fuel Consumption	Unit Labour	Unit Equipment	Unit Rate	Total Manhours	Total Fuel Consumption	Total Labour	Total Equipment	Total Cost (\$)	Unit M3	Total Vol (m3)	IOL (%)	Crown Land (%)	Water Liability (%)	Land Liability (%)	IOL Cost (\$)	Crown Land Cost (\$)	Water Liability Cost (\$)	Land Liability Cost (\$)	License	Associated Work Plan	Type of Costs	
1000	Project Wide	1100	General (Project Controls Use)	1100	General (Project Controls Use)	1100	General (Project Controls Use)		A2	Fill Application	Fill	Site Works	Fill Application	Fill Application	Fill Application		4,142.2	m2	0.2	2.0	22.2	22.2	44.4	1,013	8,397	91,766	92,017	183,782			100%	0%	0%	100%	183,782	0	0	183,782	Type A 2AM-MRY1325	2015 A	Direct	
2000	Mine Port	2100	General	2140	Mobile Equipment	2140	Mobile Equipment	MO-	O1	Light Mobile Equipment	O1	Mobile Equipment	Light Mobile Equipment	Pick up	MOBILE EQUIPMENT - PICKUP TRUCK - FORD F350 L: 6274, W: 2665, H: 2032, 6350 kg		10.0	Ea	6.7	25.0	666.1	250.0	941.1	67	250	6,661	2,500	9,411	4.00	40	100%	0%	0%	100%	9,411	0	0	9,411	Type A 2AM-MRY1325	2015 A	Direct	
2000	Mine Port	2100	General	2140	Mobile Equipment	2142	Mobile Materials Handling Equipment	MO-	O3	Heavy Mobile Equipment	O3	Mobile Equipment	Heavy Mobile Equipment	CAT 988H	MOBILE EQUIPMENT - STOCKPILE RECLAIM FRONT END LOADER - CAT 988H L: 10390, W: 3600, H: 4115, 43400 kg		2.0	Ea	13.0	120.0	1,298.9	1,200.0	2,618.9	26	240	2,598	2,400	5,238	96.00	192	100%	0%	0%	100%	5,238	0	0	5,238	Type A 2AM-MRY1325	2015 A	Direct	
2000	Mine Port	2100	General	2140	Mobile Equipment	2143	Mobile Maintenance Equipment	MO-	O3	Heavy Mobile Equipment	O3	Mobile Equipment	Heavy Mobile Equipment	Grader	MOBILE EQUIPMENT - GRADER - CAT 16M L: 9994, W: 3077, H: 3524, 24400 kg		1.0	Ea	13.0	120.0	1,298.9	1,200.0	2,618.9	13	120	1,299	1,200	2,619	96.00	96	100%	0%	0%	100%	2,619	0	0	2,619	Type A 2AM-MRY1325	2015 A	Direct	
2000	Mine Port	2100	General	2140	Mobile Equipment	2143	Mobile Maintenance Equipment	MO-	O2	Medium Mobile Equipment	O2	Mobile Equipment	Medium Mobile Equipment	telehandler	MOBILE EQUIPMENT - INTEGRATED TOOL CARRIER CAT IT38		1.0	Ea	10.0	45.0	999.1	450.0	1,494.1	10	45	999	450	1,494	24.00	24	100%	0%	0%	100%	1,494	0	0	1,494	Type A 2AM-MRY1325	2015 A	Direct	
2000	Mine Port	2100	General	2140	Mobile Equipment	2143	Mobile Maintenance Equipment	MO-	O1	Light Mobile Equipment	O1	Mobile Equipment	Light Mobile Equipment	Lights	MOBILE EQUIPMENT - MOBILE LIGHT PLANT - TEREX AL4 L: 4623, W: 2007, H: 9000, 925 kg		5.0	Ea	6.7	25.0	666.1	250.0	941.1	33	125	3,330	1,250	4,705	4.00	20	100%	0%	0%	100%	4,705	0	0	4,705	Type A 2AM-MRY1325	2015 A	Direct	
2000	Mine Port	2100	General	2140	Mobile Equipment	2143	Mobile Maintenance Equipment	MO-	O2	Medium Mobile Equipment	O2	Mobile Equipment	Medium Mobile Equipment	Hwy Truck	MOBILE EQUIPMENT - SERVICE TRUCK - FREIGHTLINER		1.0	Ea	10.0	45.0	999.1	450.0	1,494.1	10	45	999	450	1,494	24.00	24	100%	0%	0%	100%	1,494	0	0	1,494	Type A 2AM-MRY1325	2015 A	Direct	
2000	Mine Port	2100	General	2140	Mobile Equipment	2144	Mobile Site Services Equipment	MO-	O1	Light Mobile Equipment	O1	Mobile Equipment	Light Mobile Equipment	Pick up	MOBILE EQUIPMENT - AMBULANCE - FORD F350 L: 5715, W: 1752, H: 2032, 6350 kg		1.0	Ea	6.7	25.0	666.1	250.0	941.1	7	25	666	250	941	4.00	4	100%	0%	0%	100%	941	0	0	941	Type A 2AM-MRY1325	2015 A	Direct	
2000	Mine Port	2100	General	2140	Mobile Equipment	2144	Mobile Site Services Equipment	MO-	O3	Heavy Mobile Equipment	O3	Mobile Equipment	Heavy Mobile Equipment	Container Handler	MOBILE EQUIPMENT - CONTAINER HANDLER - KALMAR DRF 450-6555 L: 11684, W: 3454, H: 2146, 72000 kg		1.0	Ea	13.0	120.0	1,298.9	1,200.0	2,618.9	13	120	1,299	1,200	2,619	96.00	96	100%	0%	0%	100%	2,619	0	0	2,619	Type A 2AM-MRY1325	2015 A	Direct	
2000	Mine Port	2100	General	2140	Mobile Equipment	2144	Mobile Site Services Equipment	MO-	O2	Medium Mobile Equipment	O2	Mobile Equipment	Medium Mobile Equipment	Hwy Truck	MOBILE EQUIPMENT - FREIGHT HAUL TRACTOR - WeSTERN STAR 4900		1.0	Ea	10.0	45.0	999.1	450.0	1,494.1	10	45	999	450	1,494	24.00	24	100%	0%	0%	100%	1,494	0	0	1,494	Type A 2AM-MRY1325	2015 A	Direct	
2000	Mine Port	2100	General	2140	Mobile Equipment	2144	Mobile Site Services Equipment	MO-	O2	Medium Mobile Equipment	O2	Mobile Equipment	Medium Mobile Equipment	Large Trailer	MOBILE EQUIPMENT - LOWBOY TRAILER		1.0	Ea	10.0	45.0	999.1	450.0	1,494.1	10	45	999	450	1,494	24.00	24	100%	0%	0%	100%	1,494	0	0	1,494	Type A 2AM-MRY1325	2015 A	Direct	
2000	Mine Port	2100	General	2140	Mobile Equipment	2144	Mobile Site Services Equipment	MO-	O1	Light Mobile Equipment	O1	Mobile Equipment	Light Mobile Equipment	Trailer	MOBILE EQUIPMENT - HIBOY TRAILER, SEMI DUMP		1.0	Ea	6.7	25.0	666.1	250.0	941.1	7	25	666	250	941	4.00	4	100%	0%	0%	100%	941	0	0	941	Type A 2AM-MRY1325	2015 A	Direct	
2000	Mine Port	2100	General	2140	Mobile Equipment	2144	Mobile Site Services Equipment	MO-	O2	Medium Mobile Equipment	O2	Mobile Equipment	Medium Mobile Equipment	Peterbilt Truck	MOBILE EQUIPMENT - MAINTENANCE FUELLUBE TRUCK - PETERBLT		1.0	Ea	10.0	45.0	999.1	450.0	1,494.1	10	45	999	450	1,494	24.00	24	100%	0%	0%	100%	1,494	0	0	1,494	Type A 2AM-MRY1325	2015 A	Direct	
2000	Mine Port	2100	General	2140	Mobile Equipment	2144	Mobile Site Services Equipment	MO-	O3	Heavy Mobile Equipment	O3	Mobile Equipment	Heavy Mobile Equipment	CAT 740	MOBILE EQUIPMENT - WATER TRUCK - CAT 740 (8000 GAL)		1.0	Ea	13.0	120.0	1,298.9	1,200.0	2,618.9	13	120	1,299	1,200	2,619	96.00	96	100%	0%	0%	100%	2,619	0	0	2,619	Type A 2AM-MRY1325	2015 A	Direct	
2000	Mine Port	2300	Mine Port	2340	Stockpile	2340	Stockpile	A3		Grade & Re-Contour	A2	Site Works	Grade and Re-Contour	Grade and Contour	Additional seallift laydown area		72,000.0	m2	0.0	0.1	1.3	0.4	1.8	914	10,530	91,367	28,551	130,341	0.00	0	100%	0%	0%	100%	130,341	0	0	130,341	Type B Construction 2B-C-MRY1416	2015 A	Direct	
2000	Mine Port	2300	Material Handling	2340	Stockpile	2341	Ore Stacking System	FE-	MM3	Heavy Equipment	MM3	Mechanical Equipment	Heavy Equipment	Mining Equipment	FEEDER - STOCKPILE MOBILE FEEDER - MASABA MINING EQUIPMENT		1.0	Ea	168.0	2,220.0	16,785.4	22,200.0	41,205.4	168	2,220	16,785	22,200	41,205	56.00	56	100%	0%	0%	100%	41,205	0	0	41,205	Type A 2AM-MRY1325	2015 A	Direct	
2000	Mine Port	2300	Material Handling	2340	Stockpile	2341	Ore Stacking System	ST-	MM3	Heavy Equipment	MM3	Mechanical Equipment	Heavy Equipment	Mining Equipment	STACKER / STOCKPILE - STOCKPILE MOBILE STACKER - MASABA MINING EQUIPMENT		1.0	Ea	168.0	2,220.0	16,785.4	22,200.0	41,205.4	168	2,220	16,785	22,200	41,205	56.00	56	100%	0%	0%	100%	41,205	0	0	41,205	Type A 2AM-MRY1325	2015 A	Direct	
2000	Mine Port	2300	Material Handling	2340	Stockpile	2342	Ore Reclaim System	CV-	O3	Heavy Mobile Equipment	O3	Mobile Equipment	Heavy Mobile Equipment		CONVEYING - JUMP CONVEYOR - MASABA MINING EQUIPMENT L: 230000, W: 1524		2.0	Ea	13.0	120.0	1,298.9	1,200.0	2,618.9	26	240	2,598	2,400	5,238	96.00	192	100%	0%	0%	100%	5,238	0	0	5,238	Type A 2AM-MRY1325	2015 A	Direct	
2000	Mine Port	2300	Material Handling	2340	Stockpile	2342	Ore Reclaim System	CV-	O3	Heavy Mobile Equipment	O3	Mobile Equipment	Heavy Mobile Equipment		CONVEYING - STOCKPILE RECLAIM EXTENSION CONVEYOR		1.0	Ea	13.0	120.0	1,298.9	1,200.0	2,618.9	13	120	1,299	1,200	2,619	96.00	96	100%	0%	0%	100%	2,619	0	0	2,619	Type A 2AM-MRY1325	2015 A	Direct	
2000	Mine Port	2300	Material Handling	2340	Stockpile	2342	Ore Reclaim System	FE-	MM3	Heavy Equipment	MM3	Mechanical Equipment	Heavy Equipment	Mining Equipment	FEEDER - RECLAIM MOBILE FEEDER - MASABA MINING EQUIPMENT		1.0	Ea	168.0	2,220.0	16,785.4	22,200.0	41,205.4	168	2,220	16,785	22,200	41,205	56.00	56	100%	0%	0%	100%	41,205	0	0	41,205	Type A 2AM-MRY1325	2015 A	Direct	
2000	Mine Port	2500	Non Process Facilities	2510	Accommodations Area	2511	Service Core	BLD	FF1	Modular Building Not Contaminated (480 ft2)	FS	Buildings (Not Contaminated)	Prefabricated Special Modular		Accommodation Service Core Extension - Demolish and Decontaminate Building - Special Modular / Prefabricated	2511-BLD-001	200.0	m2	0.2	3.4	22.4	33.6	59.4	45	673	4,479	6,725	11,877	1.00	200	100%	0%	0%	100%	11,877	0	0	11,877	Type A 2AM-MRY1325	2015 A	Direct	
2000	Mine Port	2500	Non Process Facilities	2510	Accommodations Area	2511	Service Core	BLD	EG	Gravel Base Removal	EG	Flooring / Foundations	Total Gravel Base		Accommodation Service Core Extension - Demolish and foundations - Gravel Base - Skidded Building	2511-BLD-001	200.0	m2	0.0	0.0	0.0	0.0	0.0	0	0	0	0	0	0.00	0	100%	0%	0%	100%	0	0	0	0	Type A 2AM-MRY1325	2015 A	Direct	
2000	Mine Port	2500	Non Process Facilities	2510	Accommodations Area	2511	Service Core	BLD		#N/A	FW	Flooring / Foundations	Wood Floor		Accommodation Service Core Extension - Demolish floor finish - Raised Steel or Wooden Floor	2511-BLD-001	200.0	m2	0	0	0	0	0	0	0	0	0	0	0.00	0	100%	0%	0%	100%	0	0	0	0	Type A 2AM-MRY1325	2015 A	Direct	
2000	Mine Port	2500	Non Process Facilities	2510	Accommodations Area	2511	Service Core	BLD	FF1	Modular Building Not Contaminated (480 ft2)	FS	Buildings (Not Contaminated)	Prefabricated Special Modular		Accommodation Change Rooms - Demolish and Decontaminate Building - Special Modular / Prefabricated	2511-BLD-004	267.6	m2	0.2	3.4	22.4	33.6	59.4	60	900	5,993	8,997	15,889	1.00	268	100%	0%	0%	100%	15,889	0	0	15,889	Type A 2AM-MRY1325	2015 A	Direct	
2000	Mine Port	2500	Non Process Facilities	2510	Accommodations Area	2511	Service Core	BLD	EG	Gravel Base Removal	EG	Flooring / Foundations	Total Gravel Base		Accommodation Change Rooms - Demolish and foundations - Gravel Base - Skidded Building	2511-BLD-004	267.6	m2	0.0	0.0	0.0	0.0	0.0	0	0	0	0	0	0.00	0	100%	0%	0%	100%	0	0	0	0	Type A 2AM-MRY1325	2015 A	Direct	
2000	Mine Port	2500	Non Process Facilities	2510	Accommodations Area	2511	Service Core	BLD		#N/A	FW	Flooring / Foundations	Wood Floor		Accommodation Change Rooms - Demolish floor finish - Raised Steel or Wooden Floor	2511-BLD-004	267.6	m2	0	0	0	0	0	0	0	0	0	0	0	0.00	0	100%	0%	0%	100%	0	0	0	0	Type A 2AM-MRY1325	2015 A	Direct
2000	Mine Port	2500	Non Process Facilities	2510	Accommodations Area	2511	Service Core	BLD	FF1	Modular Building Not Contaminated (480 ft2)	FS	Buildings (Not Contaminated)	Prefabricated Special Modular		Accommodation Exercise Facility - Demolish and Decontaminate Building - Special Modular / Prefabricated	2511-BLD-005	200.7	m2	0.2	3.4	22.4	33.6	59.4	45	675	4,494	6,748	11,917	1.00	201	100%	0%	0%	100%	11,917	0	0	11,917	Type A 2AM-MRY1325	2015 A	Direct	
2000	Mine Port	2500	Non Process Facilities	2510	Accommodations Area	2511	Service Core	BLD	EG	Gravel Base Removal	EG	Flooring / Foundations	Total Gravel Base		Accommodation Exercise Facility - Demolish and foundations - Gravel Base - Skidded Building	2511-BLD-005	200.7	m2	0.0	0.0	0.0	0.0	0.0	0	0	0	0	0	0.00	0	100%	0%	0%	100%	0	0	0	0	Type A 2AM-MRY1325	2015 A	Direct	
2000	Mine Port	2500	Non Process Facilities	2510	Accommodations Area	2511	Service Core	BLD		#N/A	FW	Flooring / Foundations	Wood Floor		Accommodation Exercise Facility - Demolish floor finish - Raised Steel or Wooden Floor	2511-BLD-005	200.7	m2	0	0	0	0	0	0	0	0	0	0	0	0.00	0	100%	0%	0%	100%	0	0	0	0	Type A 2AM-MRY1325	2015 A	Direct
2000	Mine Port	2500	Non Process Facilities	2510	Accommodations Area	2511	Service Core	BLD	FF1	Modular Building Not Contaminated (480 ft2)	FS	Buildings (Not Contaminated)	Prefabricated Special Modular		Accommodation Arctic Corridor Extension - Demolish and Decontaminate Building - Special Modular / Prefabricated	2511-BLD-006	210.0	m2	0.2	3.4	22.4	33.6	59.4	47	706	4,703	7,061	12,471	1.00	210	100%	0%	0%	100%	12,471	0	0	12,471	Type A 2AM-MRY1325	2015 A	Direct	
2000	Mine Port	2500	Non Process Facilities	2510	Accommodations Area	2511	Service Core	BLD	EG	Gravel Base Removal	EG	Flooring / Foundations	Total Gravel Base		Accommodation Arctic Corridor Extension - Demolish and foundations - Gravel Base - Skidded Building	2511-BLD-006	210.0	m2	0.0	0.0	0.0	0.0	0.0	0	0	0	0	0	0.00	0	100%	0%	0%	100%	0	0	0	0	Type A 2AM-MRY1325	2015 A	Direct	
2000	Mine Port	2500	Non Process Facilities	2510	Accommodations Area	2511	Service Core	BLD		#N/A	FW	Flooring / Foundations	Wood Floor		Accommodation Arctic Corridor Extension - Demolish floor finish - Raised Steel or Wooden Floor	2511-BLD-006	210.0	m2	0	0	0	0	0	0	0	0	0	0	0	0.00	0	100%	0%	0%	100%	0	0	0	0	Type A 2AM-MRY1325	2015 A	Direct
2000	Mine Port	2500	Non Process Facilities	2510	Accommodations Area	2512	Accommodation Wings	BLD	FF1	Modular Building Not Contaminated (480 ft2)	FS	Buildings (Not Contaminated)	Prefabricated Special Modular		Accommodation Wing BE - Demolish and Decontaminate Building - Special Modular / Prefabricated	2512-BLD-005	611.6	m2	0.2	3.4	22.4	33.6	59.4	137																		

Level 0 - Site Location	Level 0 - Description	Level 1 - Area	Level 1 - Description	Level 2 - Facility / System	Level 2 - Description	Level 3 - Sub Facility / Sub System	Level 3 - Description	Equipment Type	Price Code	Price Code Description	Qty Code	Area - QTY Code	QTY Code Description	Type	Description	Tag Number	QTY	Unit	Manhours Per Unit	Unit Fuel Consumption	Unit Labour	Unit Equipment	Unit Rate	Total Manhours	Total Fuel Consumption	Total Labour	Total Equipment	Total Cost (\$)	Unit M3	Total Vol (m3)	IOL (%)	Crown Land (%)	Water Liability (%)	Land Liability (%)	IOL Cost (\$)	Crown Land Cost (\$)	Water Liability Cost (\$)	Land Liability Cost (\$)	License	Associated Work Plan	Type of Costs	
2000	Mine Port	2500	Non Process Facilities	2510	Accommodations Area	2512	Accommodation Wings	BLD		#N/A	FW	Flooring / Foundations	Wood Floor		Accommodation Wing BF - Demolish floor finish - Raised Steel or Wooden Floor	2512-BLD-006	611.6	m2	0	0	0	0	0	0	0	0	0	0	0.00	0	100%	0%	0%	100%	0	0	0	0	Type A 2AM-MRY1325	2015 A	Direct	
2000	Mine Port	2500	Non Process Facilities	2510	Accommodations Area	2512	Accommodation Wings	BLD	FF1	Modular Building Not Contaminated (480 ft2)	FS	Buildings (Not Contaminated)	Prefabricated Special Modular		Accommodation Wing BG - Demolish and Decontaminate Building - Special Modular / Prefabricated	2512-BLD-007	611.6	m2	0.2	3.4	22.4	33.6	59.4	137	2,056	13,698	20,564	36,319	1.00	612	100%	0%	0%	100%	36,319	0	0	36,319	Type A 2AM-MRY1325	2015 A	Direct	
2000	Mine Port	2500	Non Process Facilities	2510	Accommodations Area	2512	Accommodation Wings	BLD	EG	Gravel Base Removal	EG	Flooring / Foundations	Total Gravel Base		Accommodation Wing BG - Demolish and Decontaminate Building - Special Modular / Prefabricated	2512-BLD-007	611.6	m2	0.0	0.0	0.0	0.0	0.0	0	0	0	0	0	0.00	0	100%	0%	0%	100%	0	0	0	0	Type A 2AM-MRY1325	2015 A	Direct	
2000	Mine Port	2500	Non Process Facilities	2510	Accommodations Area	2512	Accommodation Wings	BLD		#N/A	FW	Flooring / Foundations	Wood Floor		Accommodation Wing BG - Demolish and Decontaminate Building - Special Modular / Prefabricated	2512-BLD-007	611.6	m2	0	0	0	0	0	0	0	0	0	0	0.00	0	100%	0%	0%	100%	0	0	0	0	Type A 2AM-MRY1325	2015 A	Direct	
2000	Mine Port	2500	Non Process Facilities	2510	Accommodations Area	2512	Accommodation Wings	BLD	FF1	Modular Building Not Contaminated (480 ft2)	FS	Buildings (Not Contaminated)	Prefabricated Special Modular		Accommodation Wing BH - Demolish and Decontaminate Building - Special Modular / Prefabricated	2512-BLD-008	611.6	m2	0.2	3.4	22.4	33.6	59.4	137	2,056	13,698	20,564	36,319	1.00	612	100%	0%	0%	100%	36,319	0	0	36,319	Type A 2AM-MRY1325	2015 A	Direct	
2000	Mine Port	2500	Non Process Facilities	2510	Accommodations Area	2512	Accommodation Wings	BLD	EG	Gravel Base Removal	EG	Flooring / Foundations	Total Gravel Base		Accommodation Wing BH - Demolish and Decontaminate Building - Special Modular / Prefabricated	2512-BLD-008	611.6	m2	0.0	0.0	0.0	0.0	0.0	0	0	0	0	0	0.00	0	100%	0%	0%	100%	0	0	0	0	Type A 2AM-MRY1325	2015 A	Direct	
2000	Mine Port	2500	Non Process Facilities	2510	Accommodations Area	2512	Accommodation Wings	BLD		#N/A	FW	Flooring / Foundations	Wood Floor		Accommodation Wing BH - Demolish and Decontaminate Building - Special Modular / Prefabricated	2512-BLD-008	611.6	m2	0	0	0	0	0	0	0	0	0	0	0.00	0	100%	0%	0%	100%	0	0	0	0	Type A 2AM-MRY1325	2015 A	Direct	
2000	Mine Port	2500	Non Process Facilities	2520	Services Area	2521	Services Buildings	BLD	FF2-c	Fold Away Building Contaminated (480 ft2)	FFL-c	Buildings (Contaminated)	Fold Away Building		Maintenance Building #2 - Demolish and Decontaminate Building - Fold-away Building (Steel)	2521-BLD-005	557.4	m2	0.6	2.4	56.0	84.1	142.4	312	1,312	31,212	46,858	79,382	1.00	557	100%	0%	0%	100%	79,382	0	0	79,382	Type A 2AM-MRY1325	2015 A	Direct	
2000	Mine Port	2500	Non Process Facilities	2520	Services Area	2521	Services Buildings	BLD	CP	Precast Concrete Foundations - (480 ft2)	CP	Flooring / Foundations	Precast Foundations		Maintenance Building #2 - Demolish and foundations - Precast Footing (Perimeter Beam)	2521-BLD-005	557.4	m2	0.1	2.2	14.5	21.8	38.5	81	1,214	8,087	12,141	21,442	0.75	418	100%	0%	0%	100%	21,442	0	0	21,442	Type A 2AM-MRY1325	2015 A	Direct	
2000	Mine Port	2500	Non Process Facilities	2520	Services Area	2521	Services Buildings	BLD	CS	Slab on Grade - ASSUME 300mm thick	CS	Flooring / Foundations	Slab on Grade		Maintenance Building #2 - Demolish floor finish - Slab on grade C/W Drainage	2521-BLD-005	557.4	m2	0.1	1.9	12.5	18.8	33.1	70	1,045	6,962	10,452	18,458	0.00	0	100%	0%	0%	100%	18,458	0	0	18,458	Type A 2AM-MRY1325	2015 A	Direct	
2000	Mine Port	2500	Non Process Facilities	2520	Services Area	2521	Services Buildings	BLD	FF2-c	Fold Away Building Contaminated (480 ft2)	FFL-c	Buildings (Contaminated)	Fold Away Building		Welding Shop Building #2 - Demolish and Decontaminate Building - Fold-away Building (Steel)	2521-BLD-006	148.6	m2	0.6	2.4	56.0	84.1	142.4	83	350	8,323	12,495	21,168	1.00	149	100%	0%	0%	100%	21,168	0	0	21,168	Type A 2AM-MRY1325	2015 A	Direct	
2000	Mine Port	2500	Non Process Facilities	2520	Services Area	2521	Services Buildings	BLD	CP	Precast Concrete Foundations - (480 ft2)	CP	Flooring / Foundations	Precast Foundations		Welding Shop Building #2- Demolish and foundations - Precast Footing (Perimeter Beam)	2521-BLD-006	148.6	m2	0.1	2.2	14.5	21.8	38.5	22	324	2,157	3,238	5,718	0.75	111	100%	0%	0%	100%	5,718	0	0	5,718	Type A 2AM-MRY1325	2015 A	Direct	
2000	Mine Port	2500	Non Process Facilities	2520	Services Area	2521	Services Buildings	BLD	CS	Slab on Grade - ASSUME 300mm thick	CS	Flooring / Foundations	Slab on Grade		Welding Shop Building #2- Demolish floor finish - Slab on grade	2521-BLD-006	148.6	m2	0.1	1.9	12.5	18.8	33.1	19	279	1,856	2,787	4,922	0.00	0	100%	0%	0%	100%	4,922	0	0	4,922	Type A 2AM-MRY1325	2015 A	Direct	
2000	Mine Port	2500	Non Process Facilities	2520	Services Area	2523	Services Area	BLD	FF2-c	Fold Away Building Contaminated (480 ft2)	FFL-c	Buildings (Contaminated)	Fold Away Building		Truck Wash (Repurposed Warehouse) - Demolish and Decontaminate Building - Fold-away Building (Steel)	2523-BLD-001	371.6	m2	0.6	2.4	56.0	84.1	142.4	208	875	20,808	31,239	52,921	1.00	372	100%	0%	0%	100%	52,921	0	0	52,921	Type A 2AM-MRY1325	2015 A	Direct	
2000	Mine Port	2500	Non Process Facilities	2520	Services Area	2523	Services Area	BLD	CP	Precast Concrete Foundations - (480 ft2)	CP	Flooring / Foundations	Precast Foundations		Truck Wash (Repurposed Warehouse) - Demolish and foundations - Precast Footing (Perimeter Beam)	2523-BLD-001	371.6	m2	0.1	2.2	14.5	21.8	38.5	54	809	5,391	8,094	14,295	0.75	279	100%	0%	0%	100%	14,295	0	0	14,295	Type A 2AM-MRY1325	2015 A	Direct	
2000	Mine Port	2500	Non Process Facilities	2520	Services Area	2523	Services Area	BLD	EG	Gravel Base Removal	EG	Flooring / Foundations	Total Gravel Base		Truck Wash (Repurposed Warehouse) - Demolish floor finish - Gravel	2523-BLD-001	371.6	m2	0.0	0.0	0.0	0.0	0.0	0	0	0	0	0	0.00	0	100%	0%	0%	100%	0	0	0	0	Type A 2AM-MRY1325	2015 A	Direct	
2000	Mine Port	2500	Non Process Facilities	2540	Waste Management (building and incinerator)	2540	Waste Management (building and incinerator)	A5		Liner Removal	A5	Site Works	Liner Removal	Liner Removal	Hazardous Waste Berm		972.0	m2	0.03	0.03	3.2	0.32	3.5	31	31	3,091	309	3,400	0.00	0	100%	0%	0%	100%	3,400	0	0	3,400	Type A 2AM-MRY1325	2015 A	Direct	
2000	Mine Port	2700	Site Utilities	2710	Additional Tanks	2710	Additional Tanks	TK-	MT1	Light Tanks	MT1	Mechanical Equipment	Light Tanks		Additional Light Size tanks		5.0	Ea	9.7	107.5	965.8	1,075.0	2,148.3	48	538	4,829	5,375	10,742	1.00	5	100%	0%	0%	100%	10,742	0	0	10,742	Type B Construction 2B-C-MRY1416	2015 A	Direct	
2000	Mine Port	2700	Site Utilities	2710	Additional Tanks	2710	Additional Tanks	TK-	MT2	Medium Tanks	MT2	Mechanical Equipment	Medium Tanks		Additional Medium Size tanks		3.0	Ea	31.0	390.0	3,097.3	3,900.0	7,387.3	93	1,170	9,292	11,700	22,162	2.00	6	100%	0%	0%	100%	22,162	0	0	22,162	Type B Construction 2B-C-MRY1416	2015 A	Direct	
2000	Mine Port	2700	Site Utilities	2720	Water Systems	2720	Water Systems	TK-	MT1	Light Tanks	MT1	Mechanical Equipment	Light Tanks		TANK - POTABLE WATER STORAGE TANK (20 m3)		1.0	Ea	9.7	107.5	965.8	1,075.0	2,148.3	10	108	966	1,075	2,148	1.00	1	100%	0%	0%	100%	2,148	0	0	2,148	Type A 2AM-MRY1325	2015 A	Direct	
2000	Mine Port	2700	Site Utilities	2720	Water Systems	2720	Water Systems	TK-	MT1	Light Tanks	MT1	Mechanical Equipment	Light Tanks		TANK - RAW WATER TANK (25 m3)		1.0	Ea	9.7	107.5	965.8	1,075.0	2,148.3	10	108	966	1,075	2,148	1.00	1	100%	0%	0%	100%	2,148	0	0	2,148	Type A 2AM-MRY1325	2015 A	Direct	
2000	Mine Port	2700	Site Utilities	2750	Power Distribution System	2750	Power Distribution System	BLD	FF1	Modular Building Not Contaminated (480 ft2)	FS	Buildings (Not Contaminated)	Prefabricated Special Modular		Accommodation Area E-House #3 - Demolish and Decontaminate Building - Special Modular / Prefabricated	2750-BLD-008	37.2	m2	0.2	3.4	22.4	33.6	59.4	8	125	832	1,250	2,207	1.00	37	100%	0%	0%	100%	2,207	0	0	2,207	Type A 2AM-MRY1325	2015 A	Direct	
2000	Mine Port	2700	Site Utilities	2750	Power Distribution System	2750	Power Distribution System	BLD	EG	Gravel Base Removal	EG	Flooring / Foundations	Total Gravel Base		Accommodation Area E-House #3 - Demolish and foundations - Gravel Base - Skidded Building	2750-BLD-008	37.2	m2	0.0	0.0	0.0	0.0	0.0	0	0	0	0	0	0.00	0	100%	0%	0%	100%	0	0	0	0	Type A 2AM-MRY1325	2015 A	Direct	
2000	Mine Port	2700	Site Utilities	2750	Power Distribution System	2750	Power Distribution System	BLD		#N/A	FW	Flooring / Foundations	Wood Floor		Accommodation Area E-House #3 - Demolish floor finish - Raised Steel or Wooden Floor	2750-BLD-008	37.2	m2	0	0	0	0	0	0	0	0	0	0	0	0.00	0	100%	0%	0%	100%	0	0	0	0	Type A 2AM-MRY1325	2015 A	Direct
2000	Mine Port	2700	Site Utilities	2750	Power Distribution System	2750	Power Distribution System	BLD	FF1	Modular Building Not Contaminated (480 ft2)	FS	Buildings (Not Contaminated)	Prefabricated Special Modular		Services Area E-House #3 - Demolish and Decontaminate Building - Special Modular / Prefabricated	2750-BLD-009	37.2	m2	0.2	3.4	22.4	33.6	59.4	8	125	832	1,250	2,207	1.00	37	100%	0%	0%	100%	2,207	0	0	2,207	Type A 2AM-MRY1325	2015 A	Direct	
2000	Mine Port	2700	Site Utilities	2750	Power Distribution System	2750	Power Distribution System	BLD	EG	Gravel Base Removal	EG	Flooring / Foundations	Total Gravel Base		Services Area E-House #3 - Demolish and foundations - Gravel Base - Skidded Building	2750-BLD-009	37.2	m2	0.0	0.0	0.0	0.0	0.0	0	0	0	0	0	0.00	0	100%	0%	0%	100%	0	0	0	0	Type A 2AM-MRY1325	2015 A	Direct	
2000	Mine Port	2700	Site Utilities	2750	Power Distribution System	2750	Power Distribution System	BLD		#N/A	FW	Flooring / Foundations	Wood Floor		Services Area E-House #3 - Demolish floor finish - Raised Steel or Wooden Floor	2750-BLD-009	37.2	m2	0	0	0	0	0	0	0	0	0	0	0	0.00	0	100%	0%	0%	100%	0	0	0	0	Type A 2AM-MRY1325	2015 A	Direct
3000	Tote Road	3100	Tote Road	3130	Site Development	3130	Site Development	MO-	O3	Heavy Mobile Equipment	O3	Mobile Equipment	Heavy Mobile Equipment	45 MT	MOBILE EQUIPMENT -EXCAVATOR - CAT M322D		1.0	Ea	13.0	120.0	1,298.9	1,200.0	2,618.9	13	120	1,299	1,200	2,619	96.00	96	100%	0%	0%	100%	2,619	0	0	2,619	Type A 2AM-MRY1325	2015 A	Direct	
4000	Mine Site	4100	Mine Site	4130	Site Development	4130	Ore Crushing and Loading		A3	Grade & Re-Contour	A2	Site Works	Grade and Re-Contour	Grade and Contour	Crusher extension Pad		36,180.0	m2	0.01	0.1	1.3	0.4	1.8	459	5,291	45,912	14,347	65,496	0.00	0	100%	0%	0%	100%	65,496	0	0	65,496	Type A 2AM-MRY1325	2015 A	Direct	
4000	Mine Site	4100	Mine Site	4130	Site Development	4139	Site Roads		A3	Grade & Re-Contour	A2	Site Works	Grade and Re-Contour	Grade and Contour	Site Roads		1,120.0	m2	0.0	0.1	1.3	0.4	1.8	14	164	1,421	444	2,028	0.00	-	100%	0%	0%	100%	2,028	0	0	2,028	Type A 2AM-MRY1325	2015 A	Direct	
4000	Mine Site	4100	General	4140	Mobile Equipment	4141	Mine Mobile Equipment	MO-	O3	Heavy Mobile Equipment	O3	Mobile Equipment	Heavy Mobile Equipment	Haul Truck	MOBILE EQUIPMENT - CAT 777 DUMP BOX		2.0	Ea	13.0	120.0	1,298.9	1,200.0	2,618.9	26	240	2,598	2,400	5,238	96.00	192	100%	0%	0%	100%	5,238	0	0	5,238	Type A 2AM-MRY1325	2015 A	Direct	
4000	Mine Site	4100	General	4140	Mobile Equipment	4141	Mine Mobile Equipment	MO-	O2	Medium Mobile Equipment	O2	Mobile Equipment	Medium Mobile Equipment	COMPACTOR	MOBILE EQUIPMENT - COMPACTOR - CAT CP563E		1.0	Ea	10.0	45.0	999.1	450.0	1,494.1	10	45	999	450	1,494	24.00	24	100%	0%	0%	100%	1,494	0	0	1,494	Type A 2AM-MRY1325	2015 A	Direct	
4000	Mine Site	4100	General	4140	Mobile Equipment	4141	Mine Mobile Equipment	MO-	O3	Heavy Mobile Equipment	O3	Mobile Equipment	Heavy Mobile Equipment	Haul Truck	MOBILE EQUIPMENT - MINE HAUL TRUCK - CAT 777G L: 10445, W: 6706, H: 5840, 75200 kg		6.0	Ea	13.0	120.0	1,298.9	1,200.0	2,618.9	78	720	7,793	7,200	15,713	96.00	576	100%	0%	0%	100%	15,713	0	0	15,713				

Level 0 - Site Location	Level 0 - Description	Level 1 - Area	Level 1 - Description	Level 2 - Facility / System	Level 2 - Description	Level 3 - Sub Facility / Sub System	Level 3 - Description	Equipment Type	Price Code	Price Code Description	Qty Code	Area - QTY Code	QTY Code Description	Type	Description	Tag Number	QTY	Unit	Manhours Per Unit	Unit Fuel Consumption	Unit Labour	Unit Equipment	Unit Rate	Total Manhours	Total Fuel Consumption	Total Labour	Total Equipment	Total Cost (\$)	Unit M3	Total Vol (m3)	IOL (%)	Crown Land (%)	Water Liability (%)	Land Liability (%)	IOL Cost (\$)	Crown Land Cost (\$)	Water Liability Cost (\$)	Land Liability Cost (\$)	License	Associated Work Plan	Type of Costs	
4000	Mine Site	4100	General	4140	Mobile Equipment	4141	Mine Mobile Equipment	MO-	O2	Medium Mobile Equipment	O2		Mobile Equipment	Medium Mobile Equipment	Dozer	MOBILE EQUIPMENT - MINE SITE TRACK DOZER - CAT D9T L: 6630, W: 4310, H: 3815, 78000 kg		1.0	Ea	10.0	45.0	999.1	450.0	1,494.1	10	45	999	450	1,494	24.00	24	100%	0%	0%	100%	1,494	0	0	1,494	Type A 2AM-MRY1325	2015 A	Direct
4000	Mine Site	4100	General	4140	Mobile Equipment	4141	Mine Mobile Equipment	MO-	O2	Medium Mobile Equipment	O2		Mobile Equipment	Medium Mobile Equipment	Sandvik Drill	MOBILE EQUIPMENT - PIONEER DRILL - SANDVIK DX780		1.0	Ea	10.0	45.0	999.1	450.0	1,494.1	10	45	999	450	1,494	24.00	24	100%	0%	0%	100%	1,494	0	0	1,494	Type A 2AM-MRY1325	2015 A	Direct
4000	Mine Site	4100	General	4140	Mobile Equipment	4141	Mine Mobile Equipment	MO-	O2	Medium Mobile Equipment	O2		Mobile Equipment	Medium Mobile Equipment	Sandvik Drill	MOBILE EQUIPMENT - PIONEER DRILL - SANDVIK SDX800		1.0	Ea	10.0	45.0	999.1	450.0	1,494.1	10	45	999	450	1,494	24.00	24	100%	0%	0%	100%	1,494	0	0	1,494	Type A 2AM-MRY1325	2015 A	Direct
4000	Mine Site	4100	General	4140	Mobile Equipment	4141	Mine Mobile Equipment	MO-	O3	Heavy Mobile Equipment	O3		Mobile Equipment	Heavy Mobile Equipment	FEL	MOBILE EQUIPMENT - PRODUCTION FRONT END LOADER - CAT 992K L: 16877, W: 6000, H: 7000, 100000 kg		1.0	Ea	13.0	120.0	1,298.9	1,200.0	2,618.9	13	120	1,299	1,200	2,619	96.00	96	100%	0%	0%	100%	2,619	0	0	2,619	Type A 2AM-MRY1325	2015 A	Direct
4000	Mine Site	4100	General	4140	Mobile Equipment	4141	Mine Mobile Equipment	MO-	O3	Heavy Mobile Equipment	O3		Mobile Equipment	Heavy Mobile Equipment	Drill	MOBILE EQUIPMENT - SINGLE PASS PRODUCTION DRILL - CAT MD6290 L: 14280, W: 4010, H: 4590, 56800 kg		1.0	Ea	13.0	120.0	1,298.9	1,200.0	2,618.9	13	120	1,299	1,200	2,619	96.00	96	100%	0%	0%	100%	2,619	0	0	2,619	Type A 2AM-MRY1325	2015 A	Direct
4000	Mine Site	4100	General	4140	Mobile Equipment	4142	Mobile Materials Handling Equipment	MO-	O3	Heavy Mobile Equipment	O3		Mobile Equipment	Heavy Mobile Equipment	45 MT	MOBILE EQUIPMENT - SITE MAINTENANCE MID SIZE EXCAVATOR - CAT 345DL L: 11910, W: 3490, H: 3770, 45000 kg		2.0	Ea	13.0	120.0	1,298.9	1,200.0	2,618.9	26	240	2,598	2,400	5,238	96.00	192	100%	0%	0%	100%	5,238	0	0	5,238	Type A 2AM-MRY1325	2015 A	Direct
4000	Mine Site	4100	General	4140	Mobile Equipment	4142	Mobile Materials Handling Equipment	MO-	O3	Heavy Mobile Equipment	O3		Mobile Equipment	Heavy Mobile Equipment	Grader	MOBILE EQUIPMENT - GRADER - CAT 16M L: 9994, W: 3077, H: 3524, 24400 kg		1.0	Ea	13.0	120.0	1,298.9	1,200.0	2,618.9	13	120	1,299	1,200	2,619	96.00	96	100%	0%	0%	100%	2,619	0	0	2,619	Type A 2AM-MRY1325	2015 A	Direct
4000	Mine Site	4100	General	4140	Mobile Equipment	4142	Mobile Materials Handling Equipment	MO-	O3	Heavy Mobile Equipment	O3		Mobile Equipment	Heavy Mobile Equipment	CAT 988H	MOBILE EQUIPMENT - MOBILE CRUSHING FRONT END LOADER - CAT 988H, L: 10390, W: 3600, H: 4115, 43400 kg		2.0	Ea	13.0	120.0	1,298.9	1,200.0	2,618.9	26	240	2,598	2,400	5,238	96.00	192	100%	0%	0%	100%	5,238	0	0	5,238	Type A 2AM-MRY1325	2015 A	Direct
4000	Mine Site	4100	General	4140	Mobile Equipment	4142	Mobile Materials Handling Equipment	MO-	O3	Heavy Mobile Equipment	O3		Mobile Equipment	Heavy Mobile Equipment	CAT 988H	MOBILE EQUIPMENT - ORE HAUL TRUCK FRONT END LOADER - CAT 988H L: 3277, W: 1676, H: 3810, 3175 kg		2.0	Ea	13.0	120.0	1,298.9	1,200.0	2,618.9	26	240	2,598	2,400	5,238	96.00	192	100%	0%	0%	100%	5,238	0	0	5,238	Type A 2AM-MRY1325	2015 A	Direct
4000	Mine Site	4100	General	4140	Mobile Equipment	4142	Mobile Materials Handling Equipment	MO-	O3	Heavy Mobile Equipment	O3		Mobile Equipment	Heavy Mobile Equipment	Haul Truck trailer	MOBILE EQUIPMENT - TOTE ROAD ORE HAUL TRUCK - LEAD TRAILER - SMITHCO S4 (75T) L: 10240, W: 3060, H: 4210		17.0	Ea	13.0	120.0	1,298.9	1,200.0	2,618.9	221	2,040	22,081	20,400	44,521	96.00	1,632	100%	0%	0%	100%	44,521	0	0	44,521	Type A 2AM-MRY1325	2015 A	Direct
4000	Mine Site	4100	General	4140	Mobile Equipment	4142	Mobile Materials Handling Equipment	MO-	O3	Heavy Mobile Equipment	O3		Mobile Equipment	Heavy Mobile Equipment	Haul Truck trailer	MOBILE EQUIPMENT - TOTE ROAD ORE HAUL TRUCK - PUP TRAILER - SMITHCO S4 (75T) L: 10240, W: 3060, H: 4210		19.0	Ea	13.0	120.0	1,298.9	1,200.0	2,618.9	247	2,280	24,679	22,800	49,759	96.00	1,824	100%	0%	0%	100%	49,759	0	0	49,759	Type A 2AM-MRY1325	2015 A	Direct
4000	Mine Site	4100	General	4140	Mobile Equipment	4142	Mobile Site Services Equipment	MO-	O3	Heavy Mobile Equipment	O3		Mobile Equipment	Heavy Mobile Equipment	Hwy Truck	MOBILE EQUIPMENT - TOTE ROAD ORE HAUL TRUCK - TRACTOR - WESTERN STAR 6900XD		15.0	Ea	13.0	120.0	1,298.9	1,200.0	2,618.9	195	1,800	19,483	18,000	39,283	96.00	1,440	100%	0%	0%	100%	39,283	0	0	39,283	Type A 2AM-MRY1325	2015 A	Direct
4000	Mine Site	4100	General	4140	Mobile Equipment	4143	Mobile Maintenance Equipment	MO-	O1	Light Mobile Equipment	O1		Mobile Equipment	Light Mobile Equipment	Pick up	MOBILE EQUIPMENT - FLAT DECK TRUCK - FORD F550 L: 7264, W: 2418, H: 2022, 3311 kg		2.0	Ea	6.7	25.0	666.1	250.0	941.1	13	50	1,332	500	1,882	4.00	8	100%	0%	0%	100%	1,882	0	0	1,882	Type A 2AM-MRY1325	2015 A	Direct
4000	Mine Site	4100	General	4140	Mobile Equipment	4143	Mobile Maintenance Equipment	MO-	O2	Medium Mobile Equipment	O2		Mobile Equipment	Medium Mobile Equipment	telehandler	MOBILE EQUIPMENT - INTEGRATED TOOL CARRIER CAT IT38		1.0	Ea	10.0	45.0	999.1	450.0	1,494.1	10	45	999	450	1,494	24.00	24	100%	0%	0%	100%	1,494	0	0	1,494	Type A 2AM-MRY1325	2015 A	Direct
4000	Mine Site	4100	General	4140	Mobile Equipment	4143	Mobile Maintenance Equipment	MO-	O1	Light Mobile Equipment	O1		Mobile Equipment	Light Mobile Equipment	Lights	MOBILE EQUIPMENT - LARGE MOBILE LIGHT PLANT - TEREX L: 4623, W: 2007, H: 9000, 925 kg		5.0	Ea	6.7	25.0	666.1	250.0	941.1	33	125	3,330	1,250	4,705	4.00	20	100%	0%	0%	100%	4,705	0	0	4,705	Type A 2AM-MRY1325	2015 A	Direct
4000	Mine Site	4100	General	4140	Mobile Equipment	4143	Mobile Maintenance Equipment	MO-	O2	Medium Mobile Equipment	O2		Mobile Equipment	Medium Mobile Equipment	Hwy Truck	MOBILE EQUIPMENT - SERVICE TRUCK - PETERBILT		1.0	Ea	10.0	45.0	999.1	450.0	1,494.1	10	45	999	450	1,494	24.00	24	100%	0%	0%	100%	1,494	0	0	1,494	Type A 2AM-MRY1325	2015 A	Direct
4000	Mine Site	4100	General	4140	Mobile Equipment	4144	Mobile Site Services Equipment	MO-	O2	Medium Mobile Equipment	O2		Mobile Equipment	Medium Mobile Equipment	school bus	MOBILE EQUIPMENT - COACH PASSENGER TRANSFER BUS		2.0	Ea	10.0	45.0	999.1	450.0	1,494.1	20	90	1,998	900	2,988	24.00	48	100%	0%	0%	100%	2,988	0	0	2,988	Type A 2AM-MRY1325	2015 A	Direct
4000	Mine Site	4100	General	4140	Mobile Equipment	4144	Mobile Site Services Equipment	MO-	O3	Heavy Mobile Equipment	O3		Mobile Equipment	Heavy Mobile Equipment	Container Handler	MOBILE EQUIPMENT - CONTAINER HANDLER - KALMAR DRF 450-6555 L: 11684, W: 3454, H: 2146, 72000 kg		1.0	Ea	13.0	120.0	1,298.9	1,200.0	2,618.9	13	120	1,299	1,200	2,619	96.00	96	100%	0%	0%	100%	2,619	0	0	2,619	Type A 2AM-MRY1325	2015 A	Direct
4000	Mine Site	4100	General	4140	Mobile Equipment	4144	Mobile Site Services Equipment	MO-	O2	Medium Mobile Equipment	O2		Mobile Equipment	Medium Mobile Equipment	Dump Truck	MOBILE EQUIPMENT - FUEL DELIVERY TRUCK - FREIGHTLINER		1.0	Ea	10.0	45.0	999.1	450.0	1,494.1	10	45	999	450	1,494	24.00	24	100%	0%	0%	100%	1,494	0	0	1,494	Type A 2AM-MRY1325	2015 A	Direct
4000	Mine Site	4100	General	4140	Mobile Equipment	4144	Mobile Site Services Equipment	MO-	O2	Medium Mobile Equipment	O2		Mobile Equipment	Medium Mobile Equipment	Dump Truck	MOBILE EQUIPMENT - FUEL DELIVERY TRUCK - INTERNATIONAL		1.0	Ea	10.0	45.0	999.1	450.0	1,494.1	10	45	999	450	1,494	24.00	24	100%	0%	0%	100%	1,494	0	0	1,494	Type A 2AM-MRY1325	2015 A	Direct
4000	Mine Site	4100	General	4140	Mobile Equipment	4144	Mobile Site Services Equipment	MO-	O2	Medium Mobile Equipment	O2		Mobile Equipment	Medium Mobile Equipment	Trailer	MOBILE EQUIPMENT - Live Bottom Trailer		1.0	Ea	10.0	45.0	999.1	450.0	1,494.1	10	45	999	450	1,494	24.00	24	100%	0%	0%	100%	1,494	0	0	1,494	Type A 2AM-MRY1325	2015 A	Direct
4000	Mine Site	4100	General	4140	Mobile Equipment	4144	Mobile Site Services Equipment	MO-	O2	Medium Mobile Equipment	O2		Mobile Equipment	Medium Mobile Equipment	Peterbilt Truck	MOBILE EQUIPMENT - MAINTENANCE FUEL/LUBE TRUCK - PETERBILT		1.0	Ea	10.0	45.0	999.1	450.0	1,494.1	10	45	999	450	1,494	24.00	24	100%	0%	0%	100%	1,494	0	0	1,494	Type A 2AM-MRY1325	2015 A	Direct
4000	Mine Site	4100	General	4140	Mobile Equipment	4144	Mobile Site Services Equipment	MO-	O2	Medium Mobile Equipment	O2		Mobile Equipment	Medium Mobile Equipment	Ford Truck	MOBILE EQUIPMENT - MAINTENANCE LUBE TRUCK - Ford		1.0	Ea	10.0	45.0	999.1	450.0	1,494.1	10	45	999	450	1,494	24.00	24	100%	0%	0%	100%	1,494	0	0	1,494	Type A 2AM-MRY1325	2015 A	Direct
4000	Mine Site	4100	General	4140	Mobile Equipment	4144	Mobile Site Services Equipment	MO-	O1	Light Mobile Equipment	O1		Mobile Equipment	Light Mobile Equipment	sewage vacuum truck	MOBILE EQUIPMENT - SEWAGE VACUUM TRUCK - FREIGHTLINER		1.0	Ea	6.7	25.0	666.1	250.0	941.1	7	25	666	250	941	4.00	4	100%	0%	0%	100%	941	0	0	941	Type A 2AM-MRY1325	2015 A	Direct
4000	Mine Site	4100	General	4140	Mobile Equipment	4144	Mobile Site Services Equipment	MO-	O2	Medium Mobile Equipment	O2		Mobile Equipment	Medium Mobile Equipment		MOBILE EQUIPMENT - WATER TRUCK - PETERBILT (5400 GAL)		1.0	Ea	10.0	45.0	999.1	450.0	1,494.1	10	45	999	450	1,494	24.00	24	100%	0%	0%	100%	1,494	0	0	1,494	Type A 2AM-MRY1325	2015 A	Direct
4000	Mine Site	4200	Mine	4280	Mine Support Facilities	4281	Pit Office Building	BLD	FF1	Modular Building Not Contaminated (480 ft2)	FTR1		Buildings (Not Contaminated)	Single Trailers (modular)		Pit Office Lunchroom Building - Demolish and Decontaminate Building - Trailer - Single	4281-BLD-002	66.9	m2	0.2	3.4	22.4	33.6	59.4	15	225	1,498	2,249	3,972	1.00	67	100%	0%	0%	100%	3,972	0	0	3,972	Type A 2AM-MRY1325	2015 A	Direct
4000	Mine Site	4200	Mine	4280	Mine Support Facilities	4281	Pit Office Building	BLD	FW	Timber Cribbing (480 ft2)	FT		Flooring / Foundations	Timber Cribbing		Pit Office Lunchroom Building - Demolish and foundations - Timber Cribbing to Elevate Building	4281-BLD-002	66.9	m2	0.1	1.2	7.8	11.8	20.8	8	79	524	787	1,390	0.30	20	100%	0%	0%	100%	1,390	0	0	1,390	Type A 2AM-MRY1325	2015 A	Direct
4000	Mine Site	4200	Mine	4280	Mine Support Facilities	4281	Pit Office Building	BLD		#N/A	FW		Flooring / Foundations	Wood Floor		Pit Office Lunchroom Building - Demolish floor finish - Raised Steel or Wooden Floor	4281-BLD-002	66.9	m2	0	0	0	0	0	0	0	0	0	0	0.00	0	100%	0%	0%	100%	0	0	0	0	Type A 2AM-MRY1325	2015 A	Direct
4000	Mine Site	4300	Material Handling	4380	Crushing and Screening	4381	Crushing and Screening System	CR-	MM3	Heavy Equipment	MM3		Mechanical Equipment	Heavy Equipment	Crusher	CRUSHER - PRIMARY CRUSHING PLANT LINE 3 - METSO C125 L: 3470, W: 4100, H: 3440, 38000 kg		1.0	Ea	168.0	2,220.0	16,785.4	22,200.0	41,205.4	168	2,220	16,785	22,200	41,205	56.00	56	100%	0%	0%	100%	41,205	0	0	41,205	Type A 2AM-MRY1325	2015 A	Direct
4000	Mine Site	4300	Material Handling	4380	Crushing and Screening	4381	Crushing and Screening System	SC-	MM3	Heavy Equipment	MM3		Mechanical Equipment	Heavy Equipment	Screen	PRIMARY SCREENING PLANT LINE 3 - METSO FS303		1.0	Ea	168.0	2,220.0	16,785.4	22,200.0	41,205.4	168	2,220	16,785	22,200	41,205	56.00	56	100%	0%	0%	100%	41,205	0	0	41,205	Type A 2AM-MRY1325	2015 A	Direct
4000	Mine Site	4300	Material Handling	4380	Crushing and Screening	4381	Crushing and Screening System	CR-	MM3	Heavy Equipment	MM3		Mechanical Equipment	Heavy Equipment	Crusher	CRUSHER - SECONDARY CRUSHING PLANT LINE 3 - METSO HP400 L: 2370, W: 2370, H: 1600, 23000 kg		1.0	Ea	168.0	2,220.0	16,785.4	22,200.0	41,205.4	168	2,220	16,785	22,200	41,205	56.00	56	100%	0%	0%	100%	41,205	0	0	41,205	Type A 2AM-MRY1325	2015 A	Direct
4000	Mine Site	4300	Material Handling	4380	Crushing and Screening	4381	Crushing and Screening System	SC-	MM3	Heavy Equipment	MM3		M																													

Level 0 - Site Location	Level 0 - Description	Level 1 - Area	Level 1 - Description	Level 2 - Facility / System	Level 2 - Description	Level 3 - Sub Facility / Sub System	Level 3 - Description	Equipment Type	Price Code	Price Code Description	Qty Code	Area - QTY Code	QTY Code Description	Type	Description	Tag Number	QTY	Unit	Manhours Per Unit	Unit Fuel Consumption	Unit Labour	Unit Equipment	Unit Rate	Total Manhours	Total Fuel Consumption	Total Labour	Total Equipment	Total Cost (\$)	Unit M3	Total Vol (m3)	IOL (%)	Crown Land (%)	Water Liability (%)	Land Liability (%)	IOL Cost (\$)	Crown Land Cost (\$)	Water Liability Cost (\$)	Land Liability Cost (\$)	License	Associated Work Plan	Type of Costs	
4000	Mine Site	4500	Non Process Facilities	4510	Accommodations Area	4511	Service Core	BLD	EG	Gravel Base Removal	EG		Flooring / Foundations	Total Gravel Base	Accommodation Service Core Extension - Demolish and foundations - Gravel Base - Skidded Building	4511-BLD-001	220.0	m2	0.0	0.0	0.0	0.0	0.0	0	0	0	0	0	0.00	0	100%	0%	0%	100%	0	0	0	0	Type A 2AM-MRY1325	2015 A	Direct	
4000	Mine Site	4500	Non Process Facilities	4510	Accommodations Area	4511	Service Core	BLD		#N/A	FW		Flooring / Foundations	Wood Floor	Accommodation Service Core Extension - Demolish floor finish - Raised Steel or Wooden Floor	4511-BLD-001	220.0	m2	0	0	0	0	0	0	0	0	0	0	0.00	0	100%	0%	0%	100%	0	0	0	0	Type A 2AM-MRY1325	2015 A	Direct	
4000	Mine Site	4500	Non Process Facilities	4510	Accommodations Area	4511	Service Core	BLD	FF1	Modular Building Not Contaminated (480 ft2)	FS		Buildings (Not Contaminated)	Prefabricated Special Modular	Accommodation Exercise Facility - Demolish and Decontaminate Building - Special Modular / Prefabricated	4511-BLD-005	200.7	m2	0.2	3.4	22.4	33.6	59.4	45	675	4,494	6,748	11,917	1.00	201	100%	0%	0%	100%	11,917	0	0	11,917	Type A 2AM-MRY1325	2015 A	Direct	
4000	Mine Site	4500	Non Process Facilities	4510	Accommodations Area	4511	Service Core	BLD	EG	Gravel Base Removal	EG		Flooring / Foundations	Total Gravel Base	Accommodation Exercise Facility - Demolish and foundations - Gravel Base - Skidded Building	4511-BLD-005	200.7	m2	0.0	0.0	0.0	0.0	0.0	0	0	0	0	0	0.00	0	100%	0%	0%	100%	0	0	0	0	Type A 2AM-MRY1325	2015 A	Direct	
4000	Mine Site	4500	Non Process Facilities	4510	Accommodations Area	4511	Service Core	BLD		#N/A	FW		Flooring / Foundations	Wood Floor	Accommodation Exercise Facility - Demolish floor finish - Raised Steel or Wooden Floor	4511-BLD-005	200.7	m2	0	0	0	0	0	0	0	0	0	0	0.00	0	100%	0%	0%	100%	0	0	0	0	Type A 2AM-MRY1325	2015 A	Direct	
4000	Mine Site	4500	Non Process Facilities	4510	Accommodations Area	4511	Service Core	BLD	FF1	Modular Building Not Contaminated (480 ft2)	FS		Buildings (Not Contaminated)	Prefabricated Special Modular	Accommodation Arctic Corridor Extension - Demolish and Decontaminate Building - Special Modular / Prefabricated	4511-BLD-006	60.0	m2	0.2	3.4	22.4	33.6	59.4	13	202	1,344	2,018	3,563	1.00	60	100%	0%	0%	100%	3,563	0	0	3,563	Type A 2AM-MRY1325	2015 A	Direct	
4000	Mine Site	4500	Non Process Facilities	4510	Accommodations Area	4511	Service Core	BLD	EG	Gravel Base Removal	EG		Flooring / Foundations	Total Gravel Base	Accommodation Arctic Corridor Extension - Demolish and foundations - Gravel Base - Skidded Building	4511-BLD-006	60.0	m2	0.0	0.0	0.0	0.0	0.0	0	0	0	0	0	0.00	0	100%	0%	0%	100%	0	0	0	0	Type A 2AM-MRY1325	2015 A	Direct	
4000	Mine Site	4500	Non Process Facilities	4510	Accommodations Area	4511	Service Core	BLD		#N/A	FW		Flooring / Foundations	Wood Floor	Accommodation Arctic Corridor Extension - Demolish floor finish - Raised Steel or Wooden Floor	4511-BLD-006	60.0	m2	0	0	0	0	0	0	0	0	0	0	0.00	0	100%	0%	0%	100%	0	0	0	0	Type A 2AM-MRY1325	2015 A	Direct	
4000	Mine Site	4500	Non Process Facilities	4510	Accommodations Area	4512	Accommodation Wings	BLD	FF1	Modular Building Not Contaminated (480 ft2)	FS		Buildings (Not Contaminated)	Prefabricated Special Modular	Accommodation Wing AH - Demolish and Decontaminate Building - Special Modular / Prefabricated	4512-BLD-008	611.6	m2	0.2	3.4	22.4	33.6	59.4	137	2,056	13,698	20,564	36,319	1.00	612	100%	0%	0%	100%	36,319	0	0	36,319	Type A 2AM-MRY1325	2015 A	Direct	
4000	Mine Site	4500	Non Process Facilities	4510	Accommodations Area	4512	Accommodation Wings	BLD	EG	Gravel Base Removal	EG		Flooring / Foundations	Total Gravel Base	Accommodation Wing AH - Demolish and foundations - Gravel Base - Skidded Building	4512-BLD-008	611.6	m2	0.0	0.0	0.0	0.0	0.0	0	0	0	0	0	0.00	0	100%	0%	0%	100%	0	0	0	0	Type A 2AM-MRY1325	2015 A	Direct	
4000	Mine Site	4500	Non Process Facilities	4510	Accommodations Area	4512	Accommodation Wings	BLD		#N/A	FW		Flooring / Foundations	Wood Floor	Accommodation Wing AH - Demolish floor finish - Raised Steel or Wooden Floor	4512-BLD-008	611.6	m2	0	0	0	0	0	0	0	0	0	0	0.00	0	100%	0%	0%	100%	0	0	0	0	Type A 2AM-MRY1325	2015 A	Direct	
4000	Mine Site	4500	Non Process Facilities	4510	Accommodations Area	4512	Accommodation Wings	BLD	FF1	Modular Building Not Contaminated (480 ft2)	FS		Buildings (Not Contaminated)	Prefabricated Special Modular	Accommodation Wing AI - Demolish and Decontaminate Building - Special Modular / Prefabricated	4512-BLD-009	611.6	m2	0.2	3.4	22.4	33.6	59.4	137	2,056	13,698	20,564	36,319	1.00	612	100%	0%	0%	100%	36,319	0	0	36,319	Type A 2AM-MRY1325	2015 A	Direct	
4000	Mine Site	4500	Non Process Facilities	4510	Accommodations Area	4512	Accommodation Wings	BLD	EG	Gravel Base Removal	EG		Flooring / Foundations	Total Gravel Base	Accommodation Wing AI - Demolish and foundations - Gravel Base - Skidded Building	4512-BLD-009	611.6	m2	0.0	0.0	0.0	0.0	0.0	0	0	0	0	0	0.00	0	100%	0%	0%	100%	0	0	0	0	Type A 2AM-MRY1325	2015 A	Direct	
4000	Mine Site	4500	Non Process Facilities	4510	Accommodations Area	4512	Accommodation Wings	BLD		#N/A	FW		Flooring / Foundations	Wood Floor	Accommodation Wing AI - Demolish floor finish - Raised Steel or Wooden Floor	4512-BLD-009	611.6	m2	0	0	0	0	0	0	0	0	0	0	0.00	0	100%	0%	0%	100%	0	0	0	0	Type A 2AM-MRY1325	2015 A	Direct	
4000	Mine Site	4500	Non Process Facilities	4510	Accommodations Area	4512	Accommodation Wings	BLD	FF1	Modular Building Not Contaminated (480 ft2)	FS		Buildings (Not Contaminated)	Prefabricated Special Modular	Accommodation Wing AJ - Demolish and Decontaminate Building - Special Modular / Prefabricated	4512-BLD-010	611.6	m2	0.2	3.4	22.4	33.6	59.4	137	2,056	13,698	20,564	36,319	1.00	612	100%	0%	0%	100%	36,319	0	0	36,319	Type A 2AM-MRY1325	2015 A	Direct	
4000	Mine Site	4500	Non Process Facilities	4510	Accommodations Area	4512	Accommodation Wings	BLD	EG	Gravel Base Removal	EG		Flooring / Foundations	Total Gravel Base	Accommodation Wing AJ - Demolish and foundations - Gravel Base - Skidded Building	4512-BLD-010	611.6	m2	0.0	0.0	0.0	0.0	0.0	0	0	0	0	0	0.00	0	100%	0%	0%	100%	0	0	0	0	Type A 2AM-MRY1325	2015 A	Direct	
4000	Mine Site	4500	Non Process Facilities	4510	Accommodations Area	4512	Accommodation Wings	BLD		#N/A	FW		Flooring / Foundations	Wood Floor	Accommodation Wing AJ - Demolish floor finish - Raised Steel or Wooden Floor	4512-BLD-010	611.6	m2	0	0	0	0	0	0	0	0	0	0	0.00	0	100%	0%	0%	100%	0	0	0	0	Type A 2AM-MRY1325	2015 A	Direct	
4000	Mine Site	4500	Non Process Facilities	4510	Accommodations Area	4512	Accommodation Wings	BLD	FF1	Modular Building Not Contaminated (480 ft2)	FS		Buildings (Not Contaminated)	Prefabricated Special Modular	Accommodation Wing AK - Demolish and Decontaminate Building - Special Modular / Prefabricated	4512-BLD-011	458.0	m2	0.2	3.4	22.4	33.6	59.4	103	1,540	10,258	15,401	27,199	1.00	458	100%	0%	0%	100%	27,199	0	0	27,199	Type A 2AM-MRY1325	2015 A	Direct	
4000	Mine Site	4500	Non Process Facilities	4510	Accommodations Area	4512	Accommodation Wings	BLD	EG	Gravel Base Removal	EG		Flooring / Foundations	Total Gravel Base	Accommodation Wing AK - Demolish and foundations - Gravel Base - Skidded Building	4512-BLD-011	458.0	m2	0.0	0.0	0.0	0.0	0.0	0	0	0	0	0	0.00	0	100%	0%	0%	100%	0	0	0	0	Type A 2AM-MRY1325	2015 A	Direct	
4000	Mine Site	4500	Non Process Facilities	4510	Accommodations Area	4512	Accommodation Wings	BLD		#N/A	FW		Flooring / Foundations	Wood Floor	Accommodation Wing AK - Demolish floor finish - Raised Steel or Wooden Floor	4512-BLD-011	458.0	m2	0	0	0	0	0	0	0	0	0	0	0.00	0	100%	0%	0%	100%	0	0	0	0	Type A 2AM-MRY1325	2015 A	Direct	
4000	Mine Site	4500	Non Process Facilities	4510	Accommodations Area	4512	Accommodation Wings	BLD	FF1	Modular Building Not Contaminated (480 ft2)	FS		Buildings (Not Contaminated)	Prefabricated Special Modular	Accommodation Wing AL - Demolish and Decontaminate Building - Special Modular / Prefabricated	4512-BLD-012	611.6	m2	0.2	3.4	22.4	33.6	59.4	137	2,056	13,698	20,564	36,319	1.00	612	100%	0%	0%	100%	36,319	0	0	36,319	Type A 2AM-MRY1325	2015 A	Direct	
4000	Mine Site	4500	Non Process Facilities	4510	Accommodations Area	4512	Accommodation Wings	BLD	EG	Gravel Base Removal	EG		Flooring / Foundations	Total Gravel Base	Accommodation Wing AL - Demolish and foundations - Gravel Base - Skidded Building	4512-BLD-012	611.6	m2	0.0	0.0	0.0	0.0	0.0	0	0	0	0	0	0.00	0	100%	0%	0%	100%	0	0	0	0	Type A 2AM-MRY1325	2015 A	Direct	
4000	Mine Site	4500	Non Process Facilities	4510	Accommodations Area	4512	Accommodation Wings	BLD		#N/A	FW		Flooring / Foundations	Wood Floor	Accommodation Wing AL - Demolish floor finish - Raised Steel or Wooden Floor	4512-BLD-012	611.6	m2	0	0	0	0	0	0	0	0	0	0	0.00	0	100%	0%	0%	100%	0	0	0	0	Type A 2AM-MRY1325	2015 A	Direct	
4000	Mine Site	4500	Non Process Facilities	4510	Accommodations Area	4512	Accommodation Wings	BLD	FF1	Modular Building Not Contaminated (480 ft2)	FS		Buildings (Not Contaminated)	Prefabricated Special Modular	Accommodation Wing AM - Demolish and Decontaminate Building - Special Modular / Prefabricated	4512-BLD-013	611.6	m2	0.2	3.4	22.4	33.6	59.4	137	2,056	13,698	20,564	36,319	1.00	612	100%	0%	0%	100%	36,319	0	0	36,319	Type A 2AM-MRY1325	2015 A	Direct	
4000	Mine Site	4500	Non Process Facilities	4510	Accommodations Area	4512	Accommodation Wings	BLD	EG	Gravel Base Removal	EG		Flooring / Foundations	Total Gravel Base	Accommodation Wing AM - Demolish and foundations - Gravel Base - Skidded Building	4512-BLD-013	611.6	m2	0.0	0.0	0.0	0.0	0.0	0	0	0	0	0	0.00	0	100%	0%	0%	100%	0	0	0	0	Type A 2AM-MRY1325	2015 A	Direct	
4000	Mine Site	4500	Non Process Facilities	4510	Accommodations Area	4512	Accommodation Wings	BLD		#N/A	FW		Flooring / Foundations	Wood Floor	Accommodation Wing AM - Demolish floor finish - Raised Steel or Wooden Floor	4512-BLD-013	611.6	m2	0	0	0	0	0	0	0	0	0	0	0.00	0	100%	0%	0%	100%	0	0	0	0	Type A 2AM-MRY1325	2015 A	Direct	
4000	Mine Site	4500	Non Process Facilities	4510	Accommodations Area	4512	Accommodation Wings		A3	Grade & Re-Contour	A2		Site Works	Grade and Re-Contour	Grade and Contour	Accommodation extension – West side		9,000.0	m2	0.01	0.1	1.3	0.4	1.8	114	1,316	11,421	3,569	16,293	0.00	0	100%	0%	0%	100%	16,293	0	0	16,293	Type A 2AM-MRY1325	2015 A	Direct
4000	Mine Site	4500	Non Process Facilities	4510	Accommodations Area	4512	Accommodation Wings		A3	Grade & Re-Contour	A2		Site Works	Grade and Re-Contour	Grade and Contour	Accommodation extension – East Side		2,700.0	m2	0.01	0.1	1.3	0.4	1.8	34	395	3,426	1,071	4,888	0.00	0	100%	0%	0%	100%	4,888	0	0	4,888	Type A 2AM-MRY1325	2015 A	Direct
4000	Mine Site	4500	Non Process Facilities	4520	Services Area	4521	Services Buildings	BLD	FF1-c	Modular Building Contaminated (480 ft2)	FTR1-c		Buildings (Contaminated)	Single Trailers (modular)	Workshop Office Washcar - Demolish and Decontaminate Building - Trailer - Single	4521-BLD-009	35.7	m2	0.6	3.4	56.0	84.1	143.4	20	120	1,998	2,999	5,116	1.00	36	100%	0%	0%	100%	5,116	0	0	5,116	Type A 2AM-MRY1325	2015 A	Direct	
4000	Mine Site	4500	Non Process Facilities	4520	Services Area	4521	Services Buildings	BLD	FW	Timber Cribbing (480 ft2)	FT		Flooring / Foundations	Timber Cribbing	Workshop Office Washcar - Demolish and foundations - Timber Cribbing to Elevate Building	4521-BLD-009	35.7	m2	0.1	1.2	7.8	11.8	20.8	4	42	280	420	741	0.30	11	100%	0%	0%	100%	741	0	0	741	Type A 2AM-MRY1325	2015 A	Direct	
4000	Mine Site	4500	Non Process Facilities	4520	Services Area	4521	Services Buildings	BLD		#N/A	FW		Flooring / Foundations	Wood Floor	Workshop Office Washcar - Demolish floor finish - Raised Steel or Wooden Floor	4521-BLD-009	35.7	m2	0	0	0	0	0	0	0	0	0	0	0.00	0	100%	0%	0%	100%	0	0	0	0	Type A 2AM-MRY1325	2015 A	Direct	
4000	Mine Site	4500	Non Process Facilities	4520	Services Area	4523	Truck Wash Facility	BLD	FF2-c	Fold Away Building Contaminated (480 ft2)	FFL-c		Buildings (Contaminated)	Fold Away Building	Ore Haul Truck Wash Building - Demolish and Decontaminate Building - Fold-away Building (Steel)	4523-BLD-002	483.1	m2	0.6	2.4	56.0	84.1	142.4	271	1,137	27,050	40,610	68,797	1.00	483	100%	0%	0%	100%	68,797	0	0	68,797	Type A 2AM-MRY1325	2015 A	Direct	
4000	Mine Site	4500	Non Process Facilities	4520	Services Area	4523	Truck Wash Facility	BLD	CP	Precast Concrete Foundations - (480 ft2)	CP		Flooring / Foundations	Precast Foundations	Ore Haul Truck Wash Building - Demolish and foundations - Precast Footing (Perimeter Beam)	4523-BLD-002	483.1	m2	0.1	2.2	14.5	21.8	38.5	70	1,052	7,009	10,522	18,583	0.75	362	100%	0%	0%	100%	18,583	0	0	18,583	Type A 2AM-MRY1325	2015 A	Direct	
4000	Mine Site	4500	Non Process Facilities	4520	Services Area	4523	Truck Wash Facility	BLD	EG	Gravel Base Removal	EG		Flooring / Foundations	Total Gravel																												

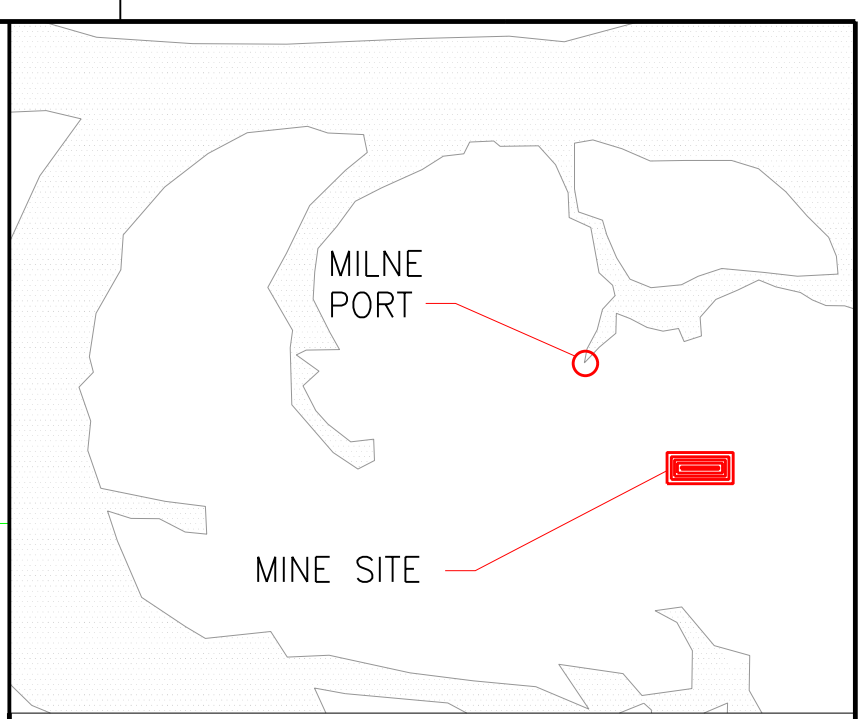
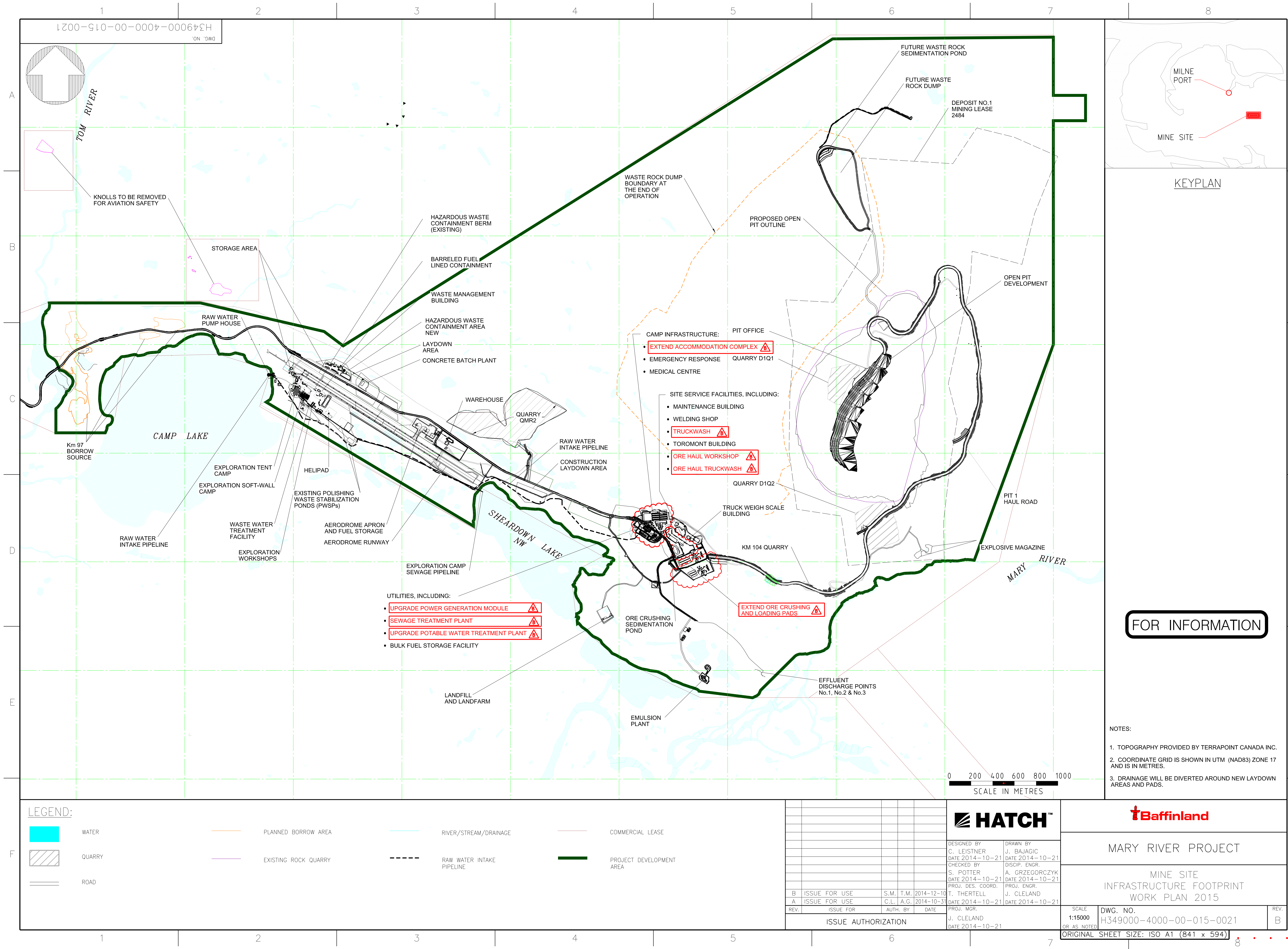
Level 0 - Site Location	Level 0 - Description	Level 1 - Area	Level 1 - Description	Level 2 - Facility / System	Level 2 - Description	Level 3 - Sub Facility / Sub System	Level 3 - Description	Equipment Type	Price Code	Price Code Description	Qty Code	Area - QTY Code	QTY Code Description	Type	Description	Tag Number	QTY	Unit	Manhours Per Unit	Unit Fuel Consumption	Unit Labour	Unit Equipment	Unit Rate	Total Manhours	Total Fuel Consumption	Total Labour	Total Equipment	Total Cost (\$)	Unit M3	Total Vol (m3)	IOL (%)	Crown Land (%)	Water Liability (%)	Land Liability (%)	IOL Cost (\$)	Crown Land Cost (\$)	Water Liability Cost (\$)	Land Liability Cost (\$)	License	Associated Work Plan	Type of Costs		
4000	Mine Site	4500	Non Process Facilities	4530	Services Area	4530	Truck Wash Facility	BLD	FF1-c	Modular Building Contaminated (480 ft2)	FS-c		Buildings (Contaminated)	Prefabricated Special Modular		Power Generation Module #8 - Demolish and Decontaminate Building - Special Modular / Prefabricated	4530-BLD-023	51.9	m2	0.6	3.4	56.0	84.1	143.4	29	175	2,908	4,366	7,448	1.00	52	100%	0%	0%	100%	7,448	0	0	7,448	Type A 2AM-MRY1325	2015 A	Direct	
4000	Mine Site	4500	Non Process Facilities	4530	Services Area	4530	Truck Wash Facility	BLD	EG	Gravel Base Removal	EG		Flooring / Foundations	Total Gravel Base		Power Generation Module #8 - Demolish and foundations - Gravel Base - Skidded Building	4530-BLD-023	51.9	m2	0.0	0.0	0.0	0.0	0	0	0	0	0	0.00	0	100%	0%	0%	100%	0	0	0	0	Type A 2AM-MRY1325	2015 A	Direct		
4000	Mine Site	4500	Non Process Facilities	4530	Services Area	4530	Truck Wash Facility	BLD		#N/A	FW		Flooring / Foundations	Wood Floor		Power Generation Module #8 - Demolish floor finish - Raised Steel or Wooden Floor	4530-BLD-023	51.9	m2	0	0	0	0	0	0	0	0	0	0.00	0	100%	0%	0%	100%	0	0	0	0	Type A 2AM-MRY1325	2015 A	Direct		
4000	Mine Site	4500	Non Process Facilities	4530	Services Area	4530	Truck Wash Facility	BLD	FF1-c	Modular Building Contaminated (480 ft2)	FS-c		Buildings (Contaminated)	Prefabricated Special Modular		Power Generation Module #9 - Demolish and Decontaminate Building - Special Modular / Prefabricated	4530-BLD-026	51.9	m2	0.6	3.4	56.0	84.1	143.4	29	175	2,908	4,366	7,448	1.00	52	100%	0%	0%	100%	7,448	0	0	7,448	Type A 2AM-MRY1325	2015 A	Direct	
4000	Mine Site	4500	Non Process Facilities	4530	Services Area	4530	Truck Wash Facility	BLD	EG	Gravel Base Removal	EG		Flooring / Foundations	Total Gravel Base		Power Generation Module #9 - Demolish and foundations - Gravel Base - Skidded Building	4530-BLD-026	51.9	m2	0.0	0.0	0.0	0.0	0	0	0	0	0	0.00	0	100%	0%	0%	100%	0	0	0	0	Type A 2AM-MRY1325	2015 A	Direct		
4000	Mine Site	4500	Non Process Facilities	4530	Services Area	4530	Truck Wash Facility	BLD		#N/A	FW		Flooring / Foundations	Wood Floor		Power Generation Module #9 - Demolish floor finish - Raised Steel or Wooden Floor	4530-BLD-026	51.9	m2	0	0	0	0	0	0	0	0	0	0.00	0	100%	0%	0%	100%	0	0	0	0	Type A 2AM-MRY1325	2015 A	Direct		
4000	Mine Site	4500	Non Process Facilities	4530	Services Area	4530	Truck Wash Facility	BLD	FF1-c	Modular Building Contaminated (480 ft2)	FS-c		Buildings (Contaminated)	Prefabricated Special Modular		Power Generation Module #10 - Demolish and Decontaminate Building - Special Modular / Prefabricated	4530-BLD-027	51.9	m2	0.6	3.4	56.0	84.1	143.4	29	175	2,908	4,366	7,448	1.00	52	100%	0%	0%	100%	7,448	0	0	7,448	Type A 2AM-MRY1325	2015 A	Direct	
4000	Mine Site	4500	Non Process Facilities	4530	Services Area	4530	Truck Wash Facility	BLD	EG	Gravel Base Removal	EG		Flooring / Foundations	Total Gravel Base		Power Generation Module #10 - Demolish and foundations - Gravel Base - Skidded Building	4530-BLD-027	51.9	m2	0.0	0.0	0.0	0.0	0	0	0	0	0	0.00	0	100%	0%	0%	100%	0	0	0	0	Type A 2AM-MRY1325	2015 A	Direct		
4000	Mine Site	4500	Non Process Facilities	4530	Services Area	4530	Truck Wash Facility	BLD		#N/A	FW		Flooring / Foundations	Wood Floor		Power Generation Module #10 - Demolish floor finish - Raised Steel or Wooden Floor	4530-BLD-027	51.9	m2	0	0	0	0	0	0	0	0	0	0.00	0	100%	0%	0%	100%	0	0	0	0	Type A 2AM-MRY1325	2015 A	Direct		
4000	Mine Site	4500	Non Process Facilities	4530	Power Generation	4530	Power Generation	BLD	FF1-c	Modular Building Contaminated (480 ft2)	FS-c		Buildings (Contaminated)	Prefabricated Special Modular		Power Generation E-House #3 - Demolish and Decontaminate Building - Special Modular / Prefabricated	4530-BLD-029	75.3	m2	0.6	3.4	56.0	84.1	143.4	42	253	4,214	6,326	10,792	1.00	75	100%	0%	0%	100%	10,792	0	0	10,792	Type A 2AM-MRY1325	2015 A	Direct	
4000	Mine Site	4500	Non Process Facilities	4530	Power Generation	4530	Power Generation	BLD	EG	Gravel Base Removal	EG		Flooring / Foundations	Total Gravel Base		Power Generation E-House #3 - Demolish and foundations - Gravel Base - Skidded Building	4530-BLD-029	75.3	m2	0.0	0.0	0.0	0.0	0	0	0	0	0	0.00	0	100%	0%	0%	100%	0	0	0	0	Type A 2AM-MRY1325	2015 A	Direct		
4000	Mine Site	4500	Non Process Facilities	4530	Power Generation	4530	Power Generation	BLD		#N/A	FW		Flooring / Foundations	Wood Floor		Power Generation E-House #3 - Demolish floor finish - Raised Steel or Wooden Floor	4530-BLD-029	75.3	m2	0	0	0	0	0	0	0	0	0	0.00	0	100%	0%	0%	100%	0	0	0	0	Type A 2AM-MRY1325	2015 A	Direct		
4000	Mine Site	4500	Non Process Facilities	4530	Power Generation	4530	Power Generation	BLD	FF1-c	Modular Building Contaminated (480 ft2)	FS-c		Buildings (Contaminated)	Prefabricated Special Modular		Power Generation E-House #4 - Demolish and Decontaminate Building - Special Modular / Prefabricated	4530-BLD-030	75.3	m2	0.6	3.4	56.0	84.1	143.4	42	253	4,214	6,326	10,792	1.00	75	100%	0%	0%	100%	10,792	0	0	10,792	Type A 2AM-MRY1325	2015 A	Direct	
4000	Mine Site	4500	Non Process Facilities	4530	Power Generation	4530	Power Generation	BLD	EG	Gravel Base Removal	EG		Flooring / Foundations	Total Gravel Base		Power Generation E-House #4 - Demolish and foundations - Gravel Base - Skidded Building	4530-BLD-030	75.3	m2	0.0	0.0	0.0	0.0	0	0	0	0	0	0.00	0	100%	0%	0%	100%	0	0	0	0	Type A 2AM-MRY1325	2015 A	Direct		
4000	Mine Site	4500	Non Process Facilities	4530	Power Generation	4530	Power Generation	BLD		#N/A	FW		Flooring / Foundations	Wood Floor		Power Generation E-House #4 - Demolish floor finish - Raised Steel or Wooden Floor	4530-BLD-030	75.3	m2	0	0	0	0	0	0	0	0	0	0.00	0	100%	0%	0%	100%	0	0	0	0	Type A 2AM-MRY1325	2015 A	Direct		
4000	Mine Site	4500	Non Process Facilities	4530	Power Generation	4530	Power Generation	BLD	FF1-c	Modular Building Contaminated (480 ft2)	FC-c		Buildings (Contaminated)	ISO Shipping Containers		Power Generation Stores #2 - Demolish and Decontaminate Building - Special Modular / Prefabricated	4530-BLD-031	29.7	m2	0.6	3.4	56.0	84.1	143.4	17	100	1,665	2,499	4,264	1.00	30	100%	0%	0%	100%	4,264	0	0	4,264	Type A 2AM-MRY1325	2015 A	Direct	
4000	Mine Site	4500	Non Process Facilities	4530	Power Generation	4530	Power Generation	BLD	EG	Gravel Base Removal	EG		Flooring / Foundations	Total Gravel Base		Power Generation Stores #2 - Demolish and foundations - Gravel Base - Skidded Building	4530-BLD-031	29.7	m2	0.0	0.0	0.0	0.0	0	0	0	0	0	0.00	0	100%	0%	0%	100%	0	0	0	0	Type A 2AM-MRY1325	2015 A	Direct		
4000	Mine Site	4500	Non Process Facilities	4530	Power Generation	4530	Power Generation	BLD		#N/A	FW		Flooring / Foundations	Wood Floor		Power Generation Stores #2 - Demolish floor finish - Raised Steel or Wooden Floor	4530-BLD-031	29.7	m2	0	0	0	0	0	0	0	0	0	0.00	0	100%	0%	0%	100%	0	0	0	0	Type A 2AM-MRY1325	2015 A	Direct		
4000	Mine Site	4500	Mine Site	4540	Waste Management	4540	Waste Management (building and incinerator)	A2		Fill Application	Fill		Site Works	Fill Application	Fill Application	Landfill Expansion		4,475.0	m2	0.245	2.0	22.2	22.2	44.369	1,094	9,071	99,140	99,411	198,550	0.00	0.00	100%	0%	0%	100%	198,550	0	0	198,550	Type A 2AM-MRY1325	2015 A	Direct	
4000	Mine Site	4600	Fuel System	4610	Mine Tank Farm	4613	Arctic Diesel System	A3		Grade & Re-Contour	A2		Site Works	Grade and Re-Contour	Grade and Contour	Utility pad extension (North West)		3,500.0	m2	0.01	0.1	1.3	0.4	1.8	44	512	4,441	1,388	6,336	0.00	0	100%	0%	0%	100%	6,336	0	0	6,336	Type A 2AM-MRY1325	2015 A	Direct	
4000	Mine Site	4600	Fuel System	4610	Mine Tank Farm	4613	Arctic Diesel System	A3		Grade & Re-Contour	A2		Site Works	Grade and Re-Contour	Grade and Contour	Utility pad extension (South West)		1,800.0	m2	0.01	0.1	1.3	0.4	1.8	23	263	2,284	714	3,259	0.00	0	100%	0%	0%	100%	3,259	0	0	3,259	Type A 2AM-MRY1325	2015 A	Direct	
4000	Mine Site	4600	Fuel System	4610	Mine Tank Farm	4619		GE-	MM2	Medium Equipment	MM2		Mechanical Equipment	Medium Equipment	Generator	GENERATOR - 1.35 MW GENERATOR		3.0	Ea	19.2	213.0	1,918.3	2,130.0	4,261.3	58	639	5,755	6,390	12,784	1.00	3	100%	0%	0%	100%	12,784	0	0	12,784	Type A 2AM-MRY1325	2015 A	Direct	
4000	Mine Site	4700	Site Utilities	4720	Water Systems	4720	Water Systems	TK-	MT2	Medium Tanks	MT2		Mechanical Equipment	Medium Tanks		TANK - POTABLE WATER STORAGE TANK (40 m3)		1.0	Ea	31.0	390.0	3,097.3	3,900.0	7,387.3	31	390	3,097	3,900	7,387	2.00	2	100%	0%	0%	100%	7,387	0	0	7,387	Type A 2AM-MRY1325	2015 A	Direct	
4000	Mine Site	4700	Site Utilities	4720	Water Systems	4720	Water Systems	VP-	VP2	VENDOR PKG - Potable Water	VP2		Packaged Facilities	Potable Water		VENDOR PACKAGE - POTABLE WATER TREATMENT PLANT VENDOR PACKAGE		1.0	Ea	47.0	480.0	4,695.9	4,800.0	9,975.9	47	480	4,696	4,800	9,976	329.27	329	100%	0%	100%	0%	9,976	0	9,976	0	24,000	Type A 2AM-MRY1325	2015 A	Direct
4000	Mine Site	4700	Site Utilities	4720	Water Systems	4720	Water Systems	TK-	MT2	Medium Tanks	MT2		Mechanical Equipment	Medium Tanks		TANK - RAW WATER TANK (60 m3)		1.0	Ea	31.0	390.0	3,097.3	3,900.0	7,387.3	31	390	3,097	3,900	7,387	2.00	2	100%	0%	0%	100%	7,387	0	0	7,387	Type A 2AM-MRY1325	2015 A	Direct	
4000	Mine Site	4700	Site Utilities	4720	Water Systems	4720	Water Systems		A3	Grade & Re-Contour	A2		Site Works	Grade and Re-Contour	Grade and Contour	Infill between service and utility pads		20,800.0	m2	0.01	0.1	1.3	0.4	1.8	264	3,042	26,395	8,248	37,654	0.00	0	100%	0%	0%	100%	37,654	0	0	37,654	Type A 2AM-MRY1325	2015 A	Direct	
4000	Mine Site	4700	Site Utilities	4730	Sewage System	4731	Sewage Treatment Systems	VP-	VP3	VENDOR PKG - Sewage Treatment Plant	VP3		Packaged Facilities	Sewage Treatment Plant		VENDOR PACKAGE - SEWAGE TREATMENT PLANT VENDOR PACKAGE		1.0	Ea	51.0	540.0	5,095.6	5,400.0	11,035.6	51	540	5,096	5,400	11,036	329.27	329	100%	0%	100%	0%	11,036	0	11,036	0	24,000	Type A 2AM-MRY1325	2015 A	Direct
4000	Mine Site	4700	Site Utilities	4740	Additional Tanks	4740	Additional Tanks	TK-	MT1	Light Tanks	MT1		Mechanical Equipment	Light Tanks		Additional Light Size tanks		5.0	Ea	9.7	107.5	965.8	1,075.0	2,148.3	48	538	4,829	5,375	10,742	1.00	5	100%	0%	0%	100%	10,742	0	0	10,742	Type B Construction 28C-MRY1416	2015 A	Direct	
4000	Mine Site	4700	Site Utilities	4740	Additional Tanks	4740	Additional Tanks	TK-	MT2	Medium Tanks	MT2		Mechanical Equipment	Medium Tanks		Additional Medium Size tanks		3.0	Ea	31.0	390.0	3,097.3	3,900.0	7,387.3	93	1,170	9,292	11,700	22,162	2.00	6	100%	0%	0%	100%	22,162	0	0	22,162	Type B Construction 28C-MRY1416	2015 A	Direct	
4000	Mine Site	4700	Site Utilities	4750	Power Distribution System	4750	Power Distribution System	BLD	FF1	Modular Building Not Contaminated (480 ft2)	FS		Buildings (Not Contaminated)	Prefabricated Special Modular		Accommodation Area E-House #3 - Demolish and Decontaminate Building - Special Modular / Prefabricated	4750-BLD-008	37.2	m2	0.2	3.4	22.4	33.6	59.4	8	125	832	1,250	2,207	1.00	37	100%	0%	0%	100%	2,207	0	0	2,207	Type A 2AM-MRY1325	2015 A	Direct	
4000	Mine Site	4700	Site Utilities	4750	Power Distribution System	4750	Power Distribution System	BLD	EG	Gravel Base Removal	EG		Flooring / Foundations	Total Gravel Base		Accommodation Area E-House #3 - Demolish and foundations - Gravel Base - Skidded Building	4750-BLD-008	37.2	m2	0.0	0.0	0.0	0.0	0	0	0	0	0	0.00	0	100%	0%	0%	100%	0	0	0	0	Type A 2AM-MRY1325	2015 A	Direct		
4000	Mine Site	4700	Site Utilities	4750	Power Distribution System	4750	Power Distribution System	BLD		#N/A	FW		Flooring / Foundations	Wood Floor		Accommodation Area E-House #3 - Demolish floor finish - Raised Steel or Wooden Floor	4750-BLD-008	37.2	m2	0	0	0	0	0	0	0	0	0	0.00	0	100%	0%	0%	100%	0	0	0	0	Type A 2AM-MRY1325	2015 A	Direct		
4000	Mine Site	4700	Site Utilities	4750	Power Distribution System	4750	Power Distribution System	BLD	FF1	Modular Building Not Contaminated (480 ft2)	FS		Buildings (Not Contaminated)	Prefabricated Special Modular		Crushing and Screening E-House #1 - Demolish and Decontaminate Building - Special Modular / Prefabricated	4750-BLD-010	59.5	m2	0.2	3.4	22.4	33.6	59.4	13	200	1,332	1,999	3,531	1.00	59	100%	0%	0%	100%	3,531	0	0	3,531	Type A 2AM-MRY1325	2015 A	Direct	
4000	Mine Site	4700	Site Utilities	4750	Power Distribution System	4750	Power Distribution System	BLD	EG	Gravel Base Removal	EG		Flooring / Foundations	Total Gravel Base		Crushing and Screening E-House #1 - Demolish and foundations - Gravel Base - Skidded Building	4750-BLD-010	59.5																									

Level 0 - Site Location	Level 0 - Description	Level 1 - Area	Level 1 - Description	Level 2 - Facility / System	Level 2 - Description	Level 3 - Sub Facility / Sub System	Level 3 - Description	Equipment Type	Price Code	Price Code Description	Qty Code	Area - QTY Code	QTY Code Description	Type	Description	Tag Number	QTY	Unit	Manhours Per Unit	Unit Fuel Consumption	Unit Labour	Unit Equipment	Unit Rate	Total Manhours	Total Fuel Consumption	Total Labour	Total Equipment	Total Cost (\$)	Unit M3	Total Vol (m3)	IOL (%)	Crown Land (%)	Water Liability (%)	Land Liability (%)	IOL Cost (\$)	Crown Land Cost (\$)	Water Liability Cost (\$)	Land Liability Cost (\$)	License	Associated Work Plan	Type of Costs
4000	Mine Site	4700	Site Utilities	4750	Power Distribution System	4750	Power Distribution System	BLD		#N/A	FW	Flooring / Foundations	Wood Floor		Crushing and Screening E-House #2 - Demolish floor finish - Raised Steel or Wooden Floor	4750-BLD-011	59.5	m2	0	0	0	0		0	0	0	0	0	0.00	0	100%	0%	0%	100%	0	0	0	0	Type A 2AM-MRY1325	2015 A	Direct
4000	Mine Site	4700	Site Utilities	4750	Power Distribution System	4750	Power Distribution System	BLD	FF1	Modular Building Not Contaminated (480 ft2)	FS	Buildings (Not Contaminated)	Prefabricated Special Modular		Services Area E-House #3 - Demolish and Decontaminate Building - Special Modular / Prefabricated	4750-BLD-012	37.2	m2	0.2	3.4	22.4	33.6	59.4	8	125	832	1,250	2,207	1.00	37	100%	0%	0%	100%	2,207	0	0	2,207	Type A 2AM-MRY1325	2015 A	Direct
4000	Mine Site	4700	Site Utilities	4750	Power Distribution System	4750	Power Distribution System	BLD	EG	Gravel Base Removal	EG	Flooring / Foundations	Total Gravel Base		Services Area E-House #3- Demolish and foundations - Gravel Base - Skidded Building	4750-BLD-012	37.2	m2	0.0	0.0	0.0	0.0	0.0	0	0	0	0	0	0.00	0	100%	0%	0%	100%	0	0	0	0	Type A 2AM-MRY1325	2015 A	Direct
4000	Mine Site	4700	Site Utilities	4750	Power Distribution System	4750	Power Distribution System	BLD		#N/A	FW	Flooring / Foundations	Wood Floor		Services Area E-House #3 - Demolish floor finish - Raised Steel or Wooden Floor	4750-BLD-012	37.2	m2	0	0	0	0		0	0	0	0	0	0.00	0	100%	0%	0%	100%	0	0	0	0	Type A 2AM-MRY1325	2015 A	Direct
7000	Mine Site	7200	Site Utilities	7230	Power Distribution System	7235	Power Distribution System	BLD	FF1	Modular Building Not Contaminated (480 ft2)	FFL	Buildings (Not Contaminated)	Fold Away Building		Site Services Unheated Warehouse - Demolish and Decontaminate Building - Fold-away Building (Steel)	7235-BLD-004	371.6	m2	0.2	3.4	22.4	33.6	59.4	83	1,250	8,323	12,495	22,068	1.00	372	100%	0%	0%	100%	22,068	0	0	22,068	Type A 2AM-MRY1325	2015 A	Direct
7000	Mine Site	7200	Site Utilities	7230	Power Distribution System	7235	Power Distribution System	BLD	CP	Precast Concrete Foundations - (480 ft2)	CP	Flooring / Foundations	Precast Foundations		Site Services Unheated Warehouse - Demolish and foundations - Precast Footing (Perimeter Beam)	7235-BLD-004	371.6	m2	0.1	2.2	14.5	21.8	38.5	54	809	5,391	8,094	14,295	0.75	279	100%	0%	0%	100%	14,295	0	0	14,295	Type A 2AM-MRY1325	2015 A	Direct
7000	Mine Site	7200	Site Utilities	7230	Power Distribution System	7235	Power Distribution System	BLD	EG	Gravel Base Removal	EG	Flooring / Foundations	Total Gravel Base		Site Services Unheated Warehouse - Demolish floor finish - Gravel	7235-BLD-004	371.6	m2	0.0	0.0	0.0	0.0	0.0	0	0	0	0	0	0.00	0	100%	0%	0%	100%	0	0	0	0	Type A 2AM-MRY1325	2015 A	Direct
4000	Mine Site	4500	Non Process Facilities	4520	Services Area	4521	Services Buildings	BLD	CS	Slab on Grade - ASSUME 300mm thick	CS	Flooring / Foundations	Slab on Grade		Welding Shop Building #2 - Demolish floor finish - Slab on grade C/W Drainage	4521-BLD-007	334.5	m2	0.1	1.9	12.5	18.8	33.1	42	627	4,177	6,271	11,075	0.00	0	100%	0%	0%	100%	11,075	0	0	11,075	Type A 2AM-MRY1325	2015 A	Direct
4000	Mine Site	4500	Non Process Facilities	4520	Services Area	4521	Services Buildings	BLD	FF2-c	Fold Away Building Contaminated (480 ft2)	FFL-c	Buildings (Contaminated)	Fold Away Building		Welding Shop Building #2 - Demolish and Decontaminate Building - Fold-away Building (Steel)	4521-BLD-007	334.5	m2	0.6	2.4	56.0	84.1	142.4	187	787	18,727	28,115	47,629	1.00	334	100%	0%	0%	100%	47,629	0	0	47,629	Type A 2AM-MRY1325	2015 A	Direct
4000	Mine Site	4500	Non Process Facilities	4520	Services Area	4521	Services Buildings	BLD	CP	Precast Concrete Foundations - (480 ft2)	CP	Flooring / Foundations	Precast Foundations		Welding Shop Building #2 - Demolish and foundations - Precast Footing (Perimeter Beam)	4521-BLD-007	334.5	m2	0.1	2.2	14.5	21.8	38.5	49	728	4,852	7,285	12,865	0.75	251	100%	0%	0%	100%	12,865	0	0	12,865	Type A 2AM-MRY1325	2015 A	Direct
4000	Mine Site	4500	Non Process Facilities	4520	Services Area	4521	Services Buildings	BLD	FF1-c	Modular Building Contaminated (480 ft2)	FTR2-c	Buildings (Contaminated)	Double Trailer (2 or more)		Ore Haul Truck Workshop Office Building - Demolish and Decontaminate Building - Trailer - Modular (2 or more modules)	4521-BLD-008	267.6	m2	0.6	3.4	56.0	84.1	143.4	150	900	14,982	22,492	38,373	1.00	268	100%	0%	0%	100%	38,373	0	0	38,373	Type A 2AM-MRY1325	2015 A	Direct
4000	Mine Site	4500	Non Process Facilities	4520	Services Area	4521	Services Buildings	BLD	FW	Timber Cribbing (480 ft2)	FT	Flooring / Foundations	Timber Cribbing		Ore Haul Truck Workshop Office Building - Demolish and foundations - Timber Cribbing to Elevate Building	4521-BLD-008	267.6	m2	0.1	1.2	7.8	11.8	20.8	33	315	2,097	3,149	5,561	0.30	80	100%	0%	0%	100%	5,561	0	0	5,561	Type A 2AM-MRY1325	2015 A	Direct
4000	Mine Site	4500	Non Process Facilities	4520	Services Area	4521	Services Buildings	BLD		#N/A	FW	Flooring / Foundations	Wood Floor		Ore Haul Truck Workshop Office Building - Demolish floor finish - Raised Steel or Wooden Floor	4521-BLD-008	267.6	m2	0	0	0	0		0	0	0	0	0	0.00	-	100%	0%	0%	100%	0	0	0	0	Type A 2AM-MRY1325	2015 A	Direct
4000	Mine Site	4500	Non Process Facilities	4520	Services Area	4521	Services Buildings	BLD	FF1-c	Modular Building Contaminated (480 ft2)	FTR2-c	Buildings (Contaminated)	Double Trailer (2 or more)		Ore Haul Maintenance Building - Demolish and Decontaminate Building - Trailer - Modular (2 or more modules)	4521-BLD-006	2,415.5	m2	0.6	3.4	56.0	84.1	143.4	1,354	8,122	135,250	203,051	346,423	1.00	2,415	100%	0%	0%	100%	346,423	0	0	346,423	Type A 2AM-MRY1325	2015 A	Direct
4000	Mine Site	4500	Non Process Facilities	4520	Services Area	4521	Services Buildings	BLD	FW	Timber Cribbing (480 ft2)	FT	Flooring / Foundations	Timber Cribbing		Ore Haul Maintenance Building - Demolish and foundations - Timber Cribbing to Elevate Building	4521-BLD-006	2,415.5	m2	0.1	1.2	7.8	11.8	20.8	298	2,843	18,935	28,427	50,205	0.30	725	100%	0%	0%	100%	50,205	0	0	50,205	Type A 2AM-MRY1325	2015 A	Direct
4000	Mine Site	4500	Non Process Facilities	4520	Services Area	4521	Services Buildings	BLD		#N/A	FW	Flooring / Foundations	Wood Floor		Ore Haul Maintenance Building - Demolish floor finish - Raised Steel or Wooden Floor	4521-BLD-006	2,415.5	m2	0	0	0	0		0	0	0	0	0	0.00	-	100%	0%	0%	100%	0	0	0	0	Type A 2AM-MRY1325	2015 A	Direct
4000	Mine Site	4500	Non Process Facilities	4520	Services Area	4521	Services Buildings	PP-	MM1	Light Equipment	MM1	Mechanical Equipment	Light Equipment	Pump	PUMP - ORE HAUL TRUCK WORKSHOP OFFICE WASHCAR RAW WATER PUMP - PLASTIC-MART L: 483, W: 275, H: 267		1.0	Ea	8.1	106.5	809.3	1,065.0	1,980.8	8	107	809	1,065	1,981	0.50	1	100%	0%	0%	100%	1,981	0	0	1,981	Type A 2AM-MRY1325	2015 A	Direct
4000	Mine Site	4500	Non Process Facilities	4520	Services Area	4521	Services Buildings	TK-	MT1	Light Tanks	MT1	Mechanical Equipment	Light Tanks		TANK - ORE HAUL TRUCK WORKSHOP OFFICE WASHCAR RAW WATER TANK - SIMER JET PUMPS 2205C L: 1803, W: 1245, H: 1346		1.0	Ea	9.7	107.5	965.8	1,075.0	2,148.3	10	108	966	1,075	2,148	1.00	1	100%	0%	0%	100%	2,148	0	0	2,148	Type A 2AM-MRY1325	2015 A	Direct
4000	Mine Site	4500	Non Process Facilities	4520	Services Area	4521	Services Buildings	TK-	MT1	Light Tanks	MT1	Mechanical Equipment	Light Tanks		TANK - ORE HAUL TRUCK WORKSHOP OFFICE WASHCAR SEWAGE COLLECTION TANK		1.0	Ea	9.7	107.5	965.8	1,075.0	2,148.3	10	108	966	1,075	2,148	1.00	1	100%	0%	0%	100%	2,148	0	0	2,148	Type A 2AM-MRY1325	2015 A	Direct

Appendix B: Updated Site Layouts

Mine Site Infrastructure Footprint Work Plan 2015 Layout
H349000-4000-00-015-0021

Milne Port Infrastructure Footprint Work Plan 2015 Layout
H349000-2000-00-015-0021



FOR INFORMATION

- NOTES:
- 1. TOPOGRAPHY PROVIDED BY TERRAPOINT CANADA INC.
 - 2. COORDINATE GRID IS SHOWN IN UTM (NAD83) ZONE 17 AND IS IN METRES.
 - 3. DRAINAGE WILL BE DIVERTED AROUND NEW LAYDOWN AREAS AND PADS.


LEGEND:

- | | | | | | | | |
|--|--------|--|----------------------|--|---------------------------|--|--------------------------|
| | WATER | | PLANNED BORROW AREA | | RIVER/STREAM/DRAINAGE | | COMMERCIAL LEASE |
| | QUARRY | | EXISTING ROCK QUARRY | | RAW WATER INTAKE PIPELINE | | PROJECT DEVELOPMENT AREA |
| | ROAD | | | | | | |



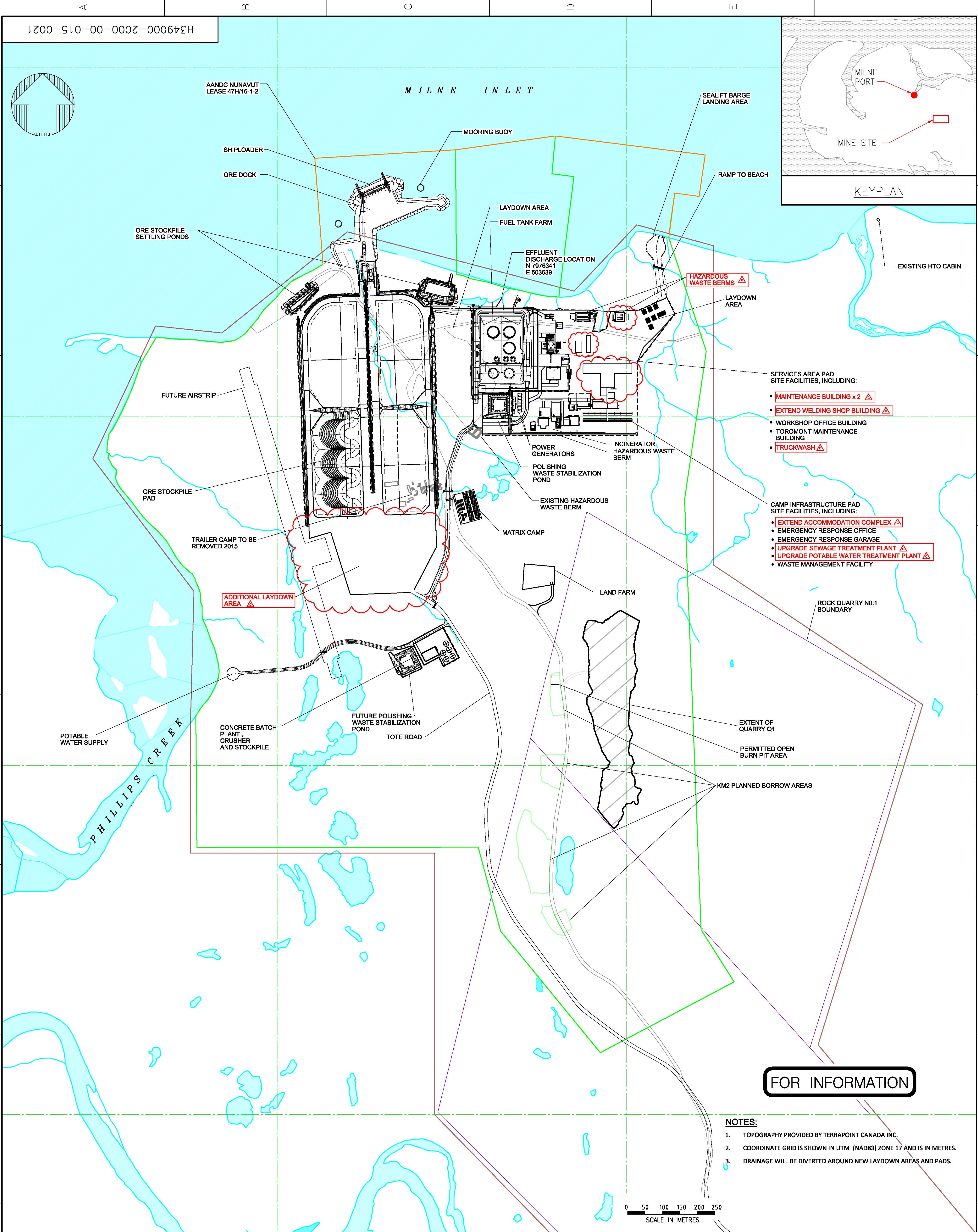
MARY RIVER PROJECT

MINE SITE
INFRASTRUCTURE FOOTPRINT
WORK PLAN 2015

							
				DESIGNED BY C. LEISTNER DATE 2014-10-21		DRAWN BY J. BAJAGIC DATE 2014-10-21	
				CHECKED BY S. POTTER DATE 2014-10-21		DISCIP. ENGR. A. GRZEGORCZYK DATE 2014-10-21	
				PROJ. DES. COORD. T. THERTELL DATE 2014-10-21		PROJ. ENGR. J. CLELAND DATE 2014-10-21	
B		ISSUE FOR USE		S.M. T.M. 2014-10-10		PROJ. MGR. J. CLELAND DATE 2014-10-21	
A		ISSUE FOR USE		C.L. A.G. 2014-10-31			
REV.		ISSUE FOR		AUTH. BY		DATE	
ISSUE AUTHORIZATION							

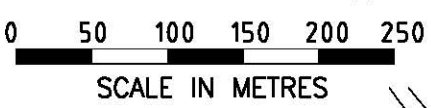
SCALE 1:15000 OR AS NOTED	DWG. NO. H349000-4000-00-015-0021	REV. B
ORIGINAL SHEET SIZE: ISO A1 (841 x 594)		

PCUN46272 4:35:19 PM
c:\p\projectwise\dcun46272\dms88660\H349000-4000-00-015-0021.dgn



FOR INFORMATION

- NOTES:
- 1. TOPOGRAPHY PROVIDED BY TERRAPOINT CANADA INC.
 - 2. COORDINATE GRID IS SHOWN IN UTM (NAD83) ZONE 17 AND IS IN METRES.
 - 3. DRAINAGE WILL BE DIVERTED AROUND NEW LAYDOWN AREAS AND PADS.



LEGEND:

	RIVER/STREAM/DRAINAGE
	ROAD
	PROJECT DEVELOPMENT AREA
	QUARRY
	COMMERCIAL LEASE
	AANDC LEASE 47H/16-1-2
	PLANNED BORROW AREAS

DESIGNED BY C. LEISTNER DATE 2014-10-20	DRAWN BY J. BAJAGIC DATE 2014-10-20
CHECKED BY S. POTTER DATE 2014-10-20	DISCIP. ENGR. A. GRZECORCZYK DATE 2014-10-20
PROJ. DES. COORD. T. THERTELL DATE 2014-10-20	PROJ. ENGR. J. CLELAND DATE 2014-06-19
PROJ. MGR. J. CLELAND DATE 2014-06-19	

C	ISSUE FOR USE	S.M.	T.M.	2014-12-10
B	ISSUE FOR USE	C.L.	T.M.	2014-10-31
A	ISSUE FOR USE	C.L.	A.G.	2014-06-19
REV.	ISSUE FOR	AUTH. BY	DATE	

ISSUE AUTHORIZATION

MARY RIVER PROJECT

MILNE PORT
INFRASTRUCTURE FOOTPRINT
WORK PLAN 2015

SCALE 1:5000 OR AS NOTED	DWG. NO. H349000-2000-00-015-0021	REV. C
--------------------------------	--------------------------------------	-----------

Appendix C: Supporting Documentation

2015 Work Plan Addendum – Mechanical and Mobile Equipment
H349001-1000-50-144-0001

2015 Work Plan Addendum – Master Building Matrix
H349001-1000-00-144-0001

Printed: 12/11/2014 2:09 PM

H349001-1000-50-144-0001,
Page 2 of 2

11/13/2014	0	Preliminary	K. Imai			
Date	Rev	Status	Prepared By	Checked By	Approved By	Approved By

BUILDING TYPE	
FO	Fold-away Building (Steel)
FA	Fabric w/ Sea Can Walls
SC	ISO Shipping Container
TS	Trailer - Single
TM	Trailer - Modular (2 or more modules)
PE	Pre-Engineered

FLOOR FINISH	
SOG	Slab on grade
SOGD	Slab on grade C/W Drainage
G	Gravel
RA	Raised Steel or Wooden Floor
-	Not Applicable