



**Photo 23: A view of the mine site water intake jetty**



**Photo 24: A view of the mine site series of check dams near intake jetty**



**Photo 25: A view of the bridge on Tote Toad at KM 97 (u/s)**



**Photo 26: A view of the bridge abutment and approaching flow**





**Photo 27: A view of the tote road slope improvement (Rockfill buttress)**



**Photo 28: A view of the tote road slope improvement (granular fill slope protection)**

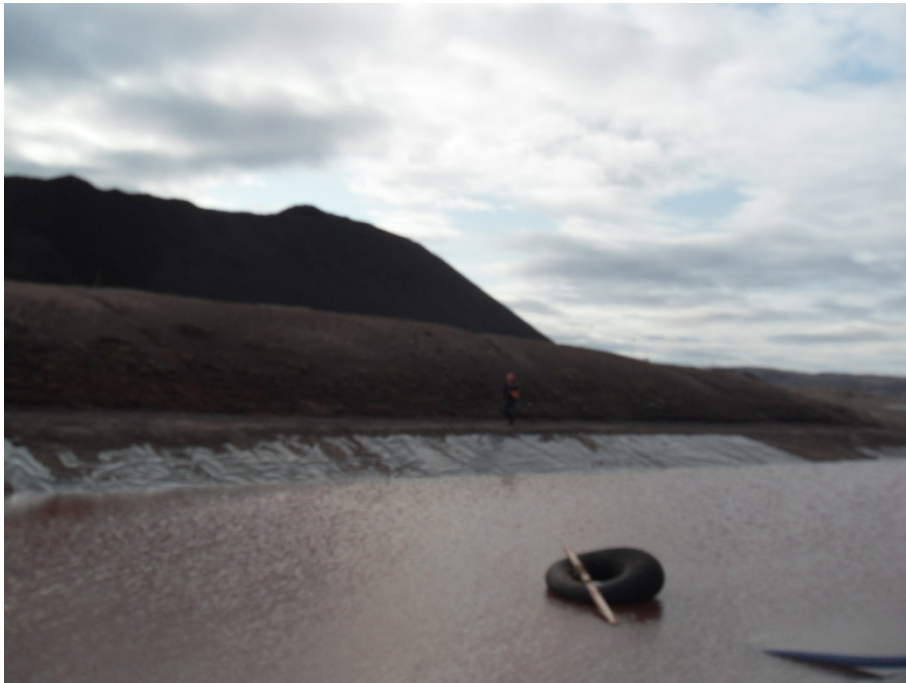


**Photo 29: A view of the Tote Road surface and a culvert U/S**



**Photo 30: A view of the Tote Road culvert d/s**





**Photo 31: A view of the ore stockpile pond (West) showing condition of the liner and intake**



**Photo 32: A view of the ore stockpile pond (West) – depressed section on right corner is emergency spillway**



**Photo 33: A view of the ore stockpile sedimentation pond (East Pond) showing liner conditions, water level and intake arrangements**



**Photo 34: A view of the ore stockpile sedimentation pond (Esat Pond) showing emergency spillway section**





**Photo 35: A view of the PWSP at port site (Embankment Conditions)**



**Photo 36: A view of the PWSP at port site (Liner Conditions)**



**Photo 37: A view of the bulk fuel storage at port site – additional tank pad being constructed**



**Photo 38: A view of the bulk fuel storage facility at port site – embankment/vicinity conditions**





**Photo 39: A view of land farm at port site – its contents and perimeter embankment**



**Photo 40: A view of the view of land farm at port site – its associated pond area**



**Photo 41: A view of contaminated water pond at port site**



**Photo 42: A view of the water treatment facility associated with contaminated water pond**





**Photo 43: A view of the drainage around laydown area at port site – drainage line vicinity**



**Photo 44: A view of the diversion drain at port site laydown area – local slogging**