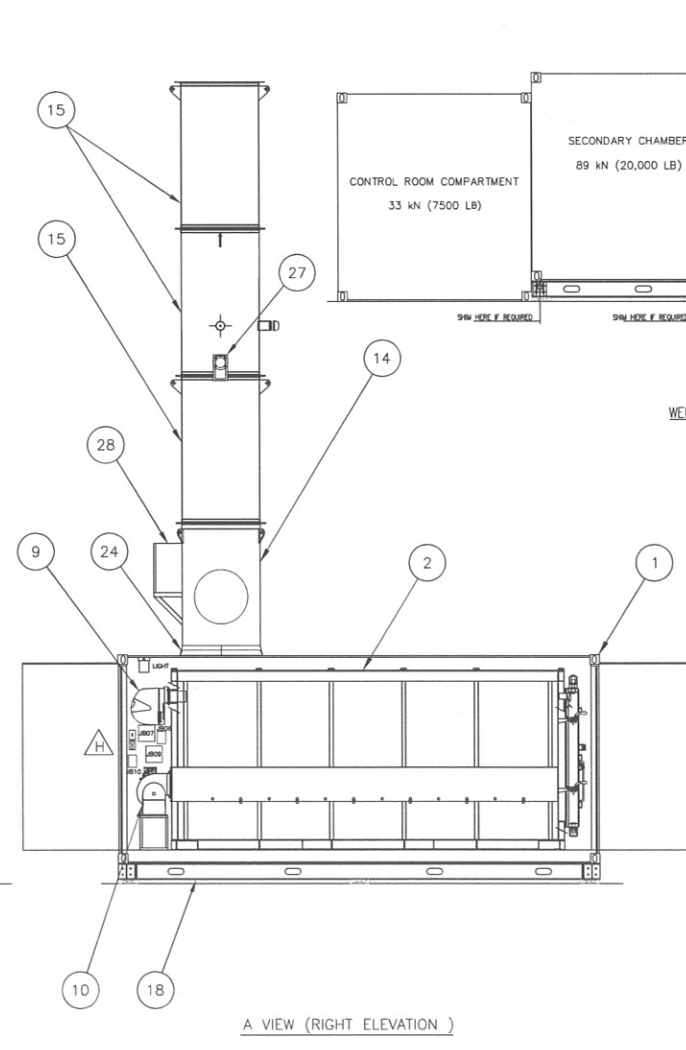
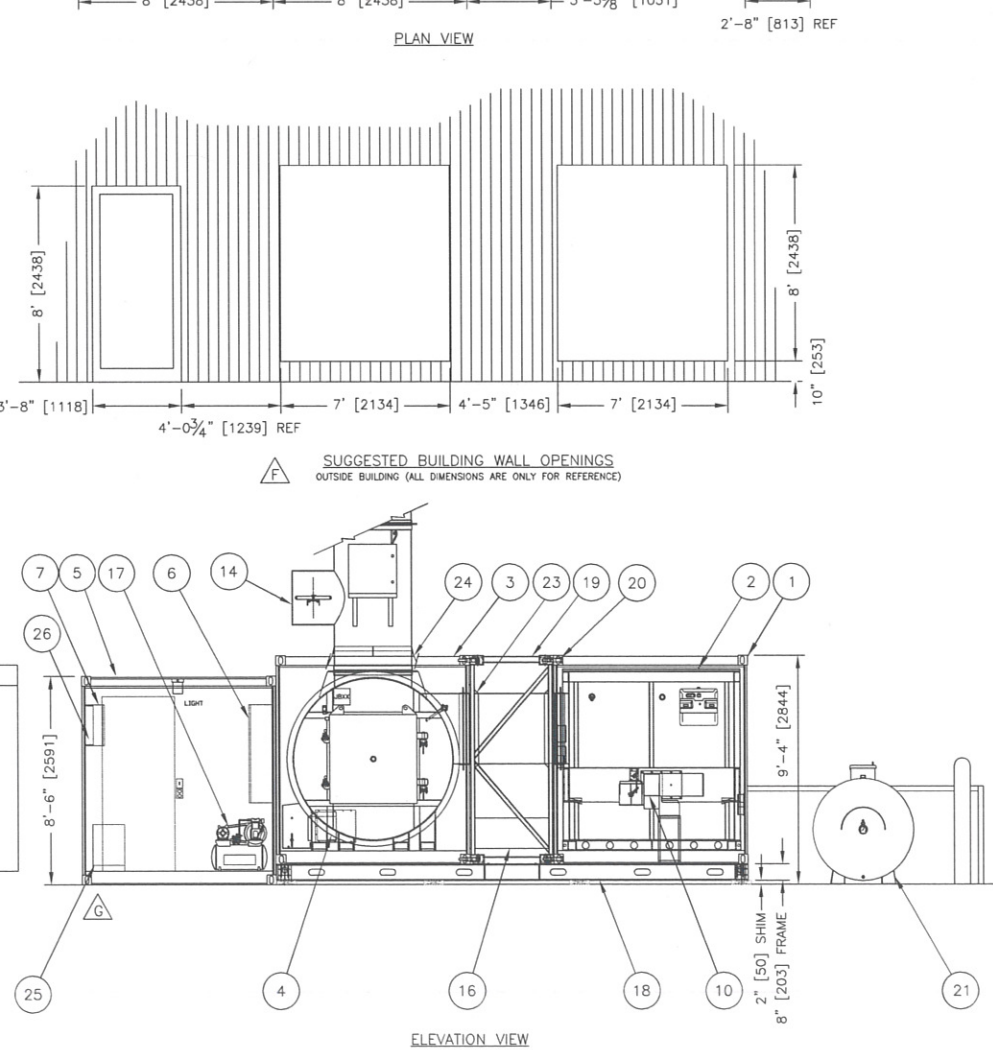
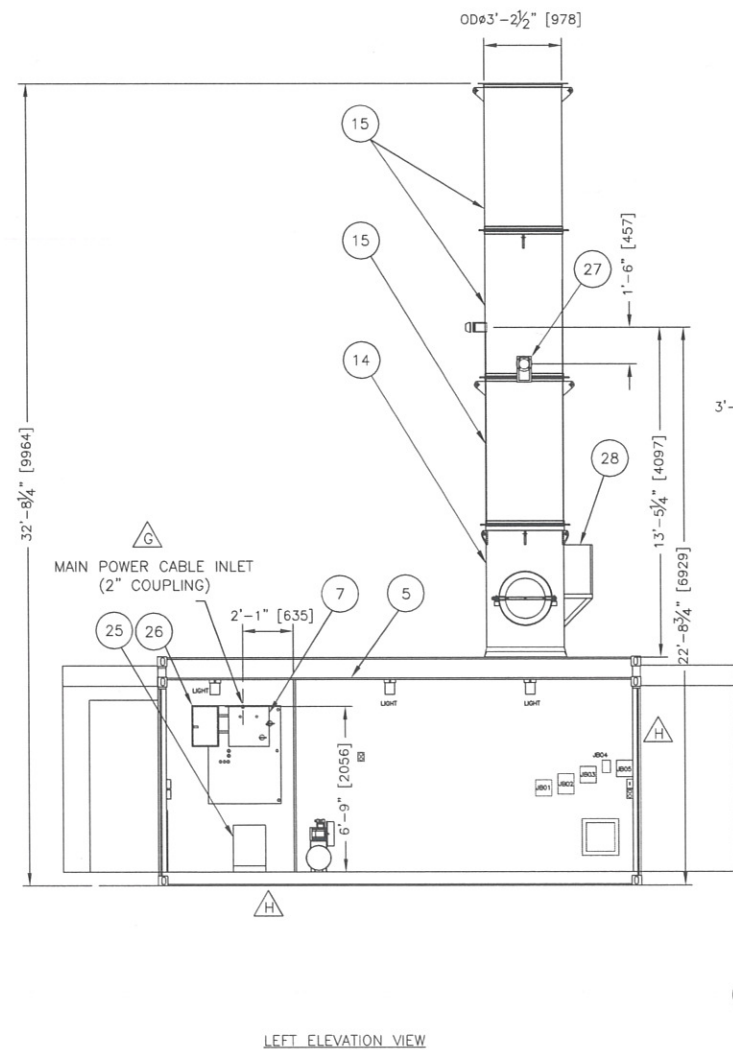
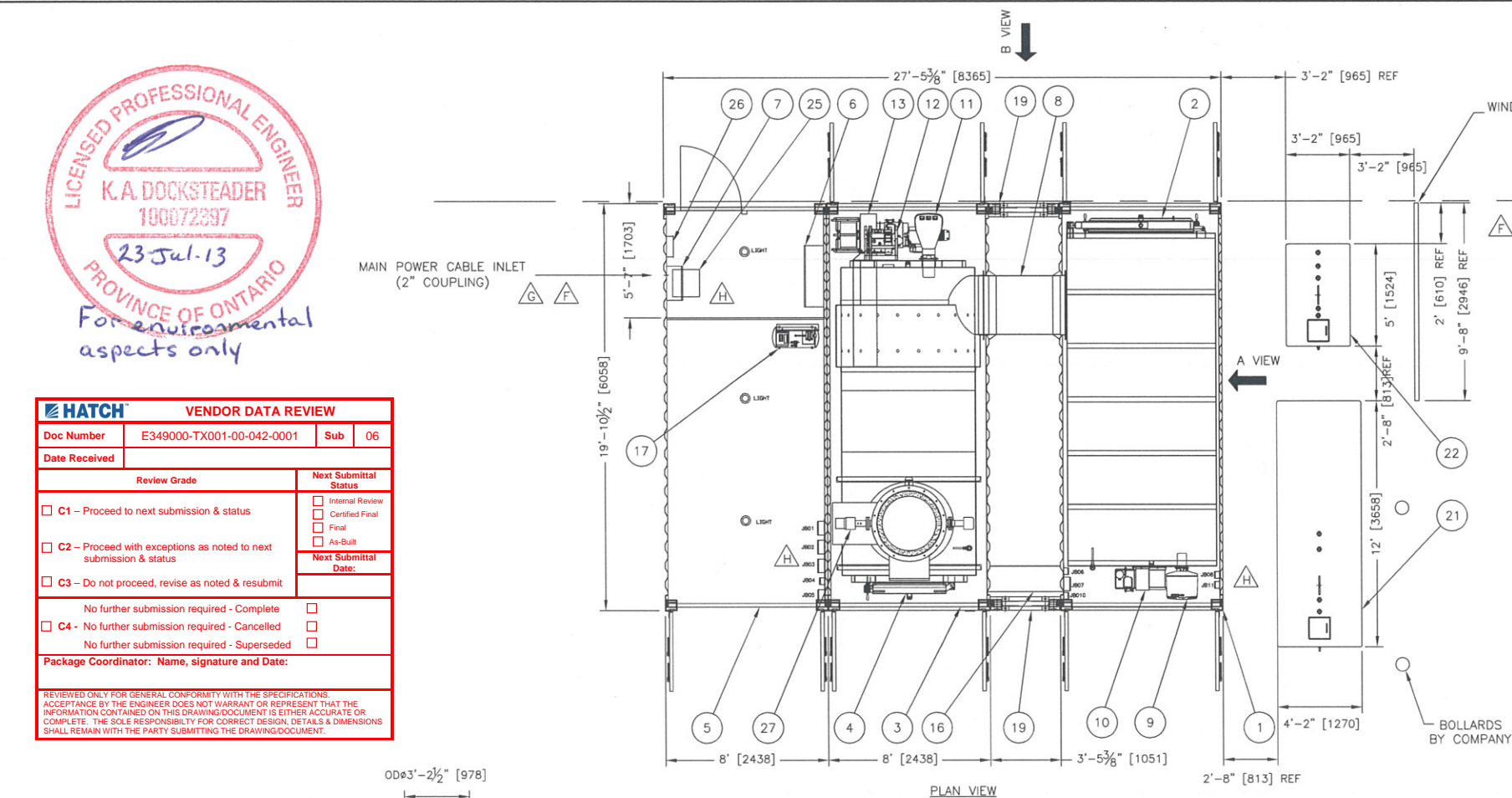
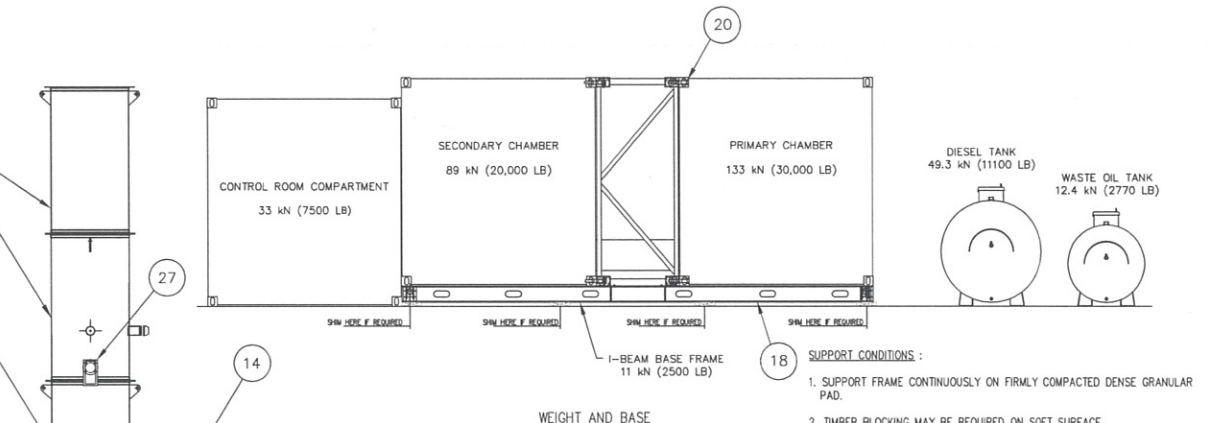
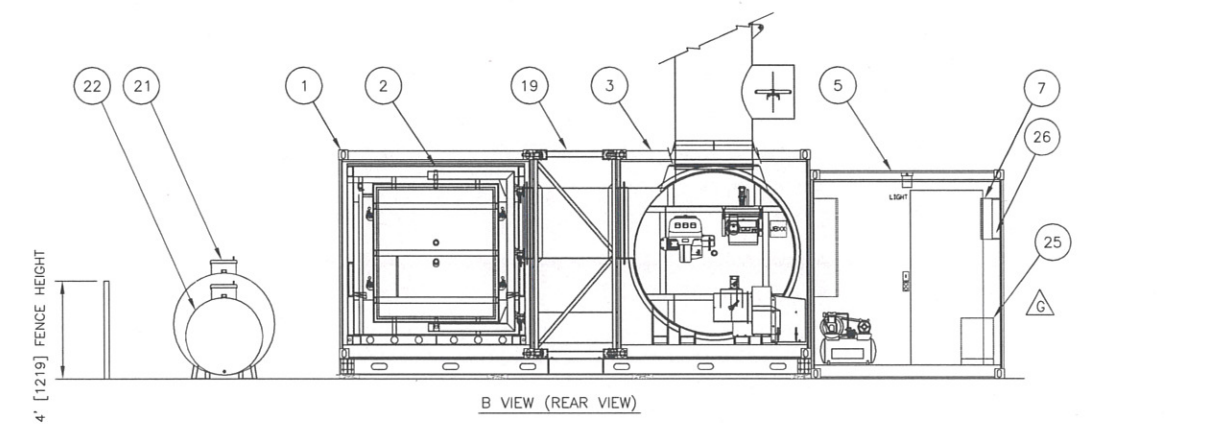




HATCH VENDOR DATA REVIEW			
Doc Number	E349000-TX001-00-042-0001	Sub	06
Date Received			
Review Grade	Next Submittal Status		
<input type="checkbox"/> C1 - Proceed to next submission & status	<input type="checkbox"/> Internal Review		
<input type="checkbox"/> C2 - Proceed with exceptions as noted to next submission & status	<input type="checkbox"/> Certified Final		
<input type="checkbox"/> C3 - Do not proceed, revise as noted & resubmit	<input type="checkbox"/> Final		
	<input type="checkbox"/> As-Built		
	Next Submittal Date:		
<input type="checkbox"/> No further submission required - Complete			
<input type="checkbox"/> C4 - No further submission required - Cancelled			
<input type="checkbox"/> No further submission required - Superseded			
Package Coordinator: Name, signature and Date:			
REVIEWED ONLY FOR GENERAL CONFORMITY WITH THE SPECIFICATIONS. ACCEPTANCE BY THE ENGINEER DOES NOT WARRANT OR REPRESENT THAT THE INFORMATION CONTAINED ON THIS DRAWING/DOCUMENT IS EITHER ACCURATE OR COMPLETE. THE SOLE RESPONSIBILITY FOR CORRECT DESIGN, DETAILS & DIMENSIONS SHALL REMAIN WITH THE PARTY SUBMITTING THE DRAWING/DOCUMENT.			



BILL OF MATERIAL - MASTER SYSTEM ASSEMBLY			
ITEM	QTY	DESCRIPTION	PART #
1	1	PRIMARY CHAMBER CONTAINER	
2	1	PRIMARY CHAMBER	
3	1	SECONDARY CHAMBER CONTAINER	
4	1	SECONDARY CHAMBER	
5	1	CONTROL PANEL CONTAINER	
6	1	MAIN CONTROL PANEL	
7	1	MAIN DISCONNECT	
8	1	BREECH SECTION	
9	1	PRIMARY BURNER	
10	1	PRIMARY BLOWER ASSEMBLY	
11	1	SECONDARY BURNER	
12	1	WASTE OIL BURNER	
13	1	SECONDARY BLOWER ASSEMBLY	
14	1	T-STACK SECTION	
15	3	STACK SECTION	
16	1	UTILITY CONDUIT (PRIMARY CONTAINER TO SECONDARY CONTAINER)	
17	1	AIR COMPRESSOR	
18	1	I-BEAM BASE FRAME ASSEMBLY	
19	2	CONTAINER SPACER	
20	8	UNIVERSAL BRIDGE CLAMP	
21	1	DIESEL TANK (4500L)	
22	1	WASTE OIL TANK (1100L)	
23	4	BREECH STORM COLLAR	
24	2	STACK FLASHING (C/W STORM COLLARS)	
25	1	15 KVA TRANSFORMER	
26	1	AUXILIARY POWER BREAKER PANEL	
27	2	OPACITY MONITOR	
28	1	OPACITY MONITOR AIR PURGE ASSEMBLY	



- SUPPORT CONDITIONS:**
- SUPPORT FRAME CONTINUOUSLY ON FIRMLY COMPACTED DENSE GRANULAR PAD.
 - TIMBER BLOCKING MAY BE REQUIRED ON SOFT SURFACE.
 - IF REQUIRED, PLACE SOLID SHIMS WHERE SHOWN, FRAME TO BE LEVEL WITHIN ± 5 mm BEFORE POSITIONING CONTAINERS.
 - SHIMS TO BE WOOD BLOCKS 50 X 250 X 300 LONG (2 X 10 X 12"), IN COMBINATION WITH PLYWOOD AS REQUIRED.
 - MAX. SHIM HEIGHT 100mm (4")
 - FOR RE-LEVELING, LIFT AT ALL SUPPORT ZONES TO PREVENT DISTORTION.

REV.	DATE	DESCRIPTION	BY	APPROVED
H	19/JULY/13	ADDED JUNCTION BOX AND CEMS, OPACITY MONITOR	JJK	
G	11/JULY/13	UPDATED ACCORDING TO FEED BACK (Sub 04)	JJK	
F	10/JUNE/13	UPDATED ACCORDING TO FEED BACK	JJK	
E	30/MAY/13	ADDED WALL OPENINGS DIMENSION	JJK	
D	24/MAY/13	ADDED DIMENSIONS	JJK	
C	09/MAY/13	ADDED WEIGHTS	JJK	
B	09/MAY/13	ADDED TEST PORTS AND OPACITY MONITOR OPENINGS	JJK	
A	22/FEB/13	INITIAL RELEASE	JJK	

THIS DOCUMENT IS THE PROPERTY OF ECO WASTE INC. AND SHALL NOT BE USED, COPIED OR TRANSFERRED TO OTHER DOCUMENTS WITHOUT PRIOR WRITTEN PERMISSION OF ECO WASTE SOLUTIONS.

PROJECT NAME: MARY RIVER IRON ORE PROJECT CONTRACT No. _____

PROJECT NUMBER: H349000-TX001 DIN No. _____

ECO WASTE SOLUTIONS			
DRAWN	DATE	CHECKED	DATE
JJK	22 FEB 2013	[Signature]	23-Jul-13
SCALE:	TITLE:		
1:45	GENERAL ARRANGEMENT		
JOB NO.	ECO M2TN MOBILE INCINERATOR		
---	---		
THIRD ANGLE	DWG. NO.	REV.	
[Symbol]	MASTER SYSTEM ASSEMBLY-00A	H	