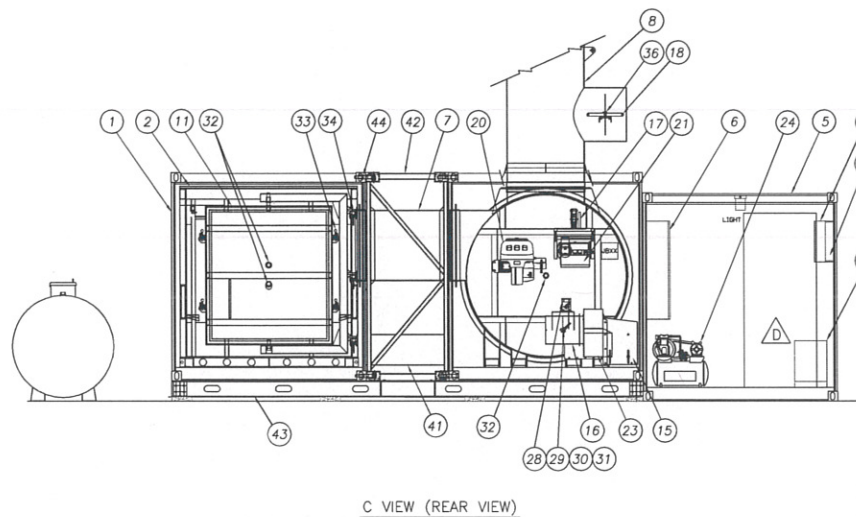
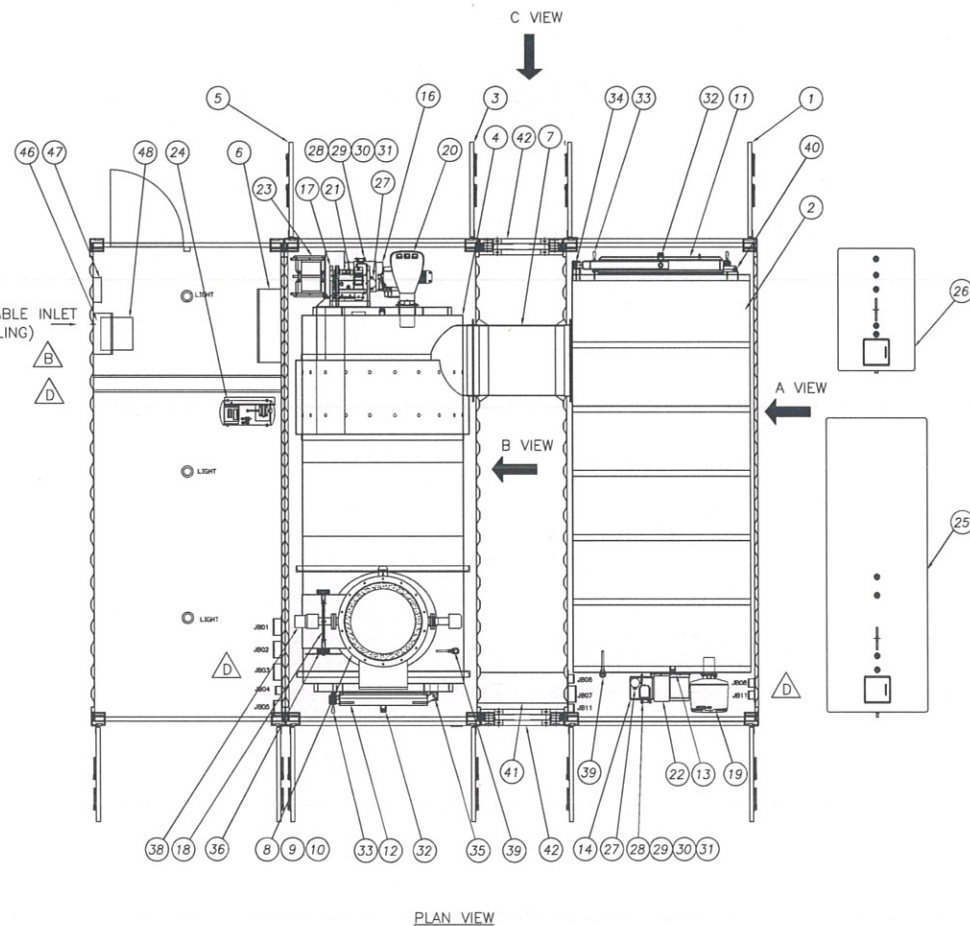
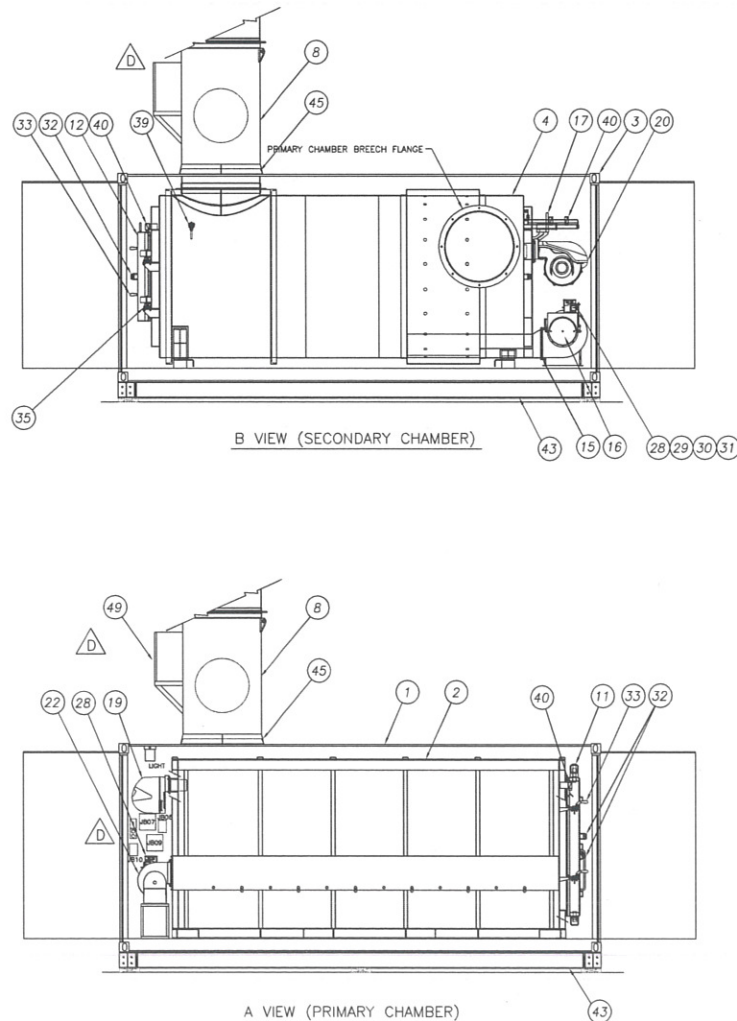
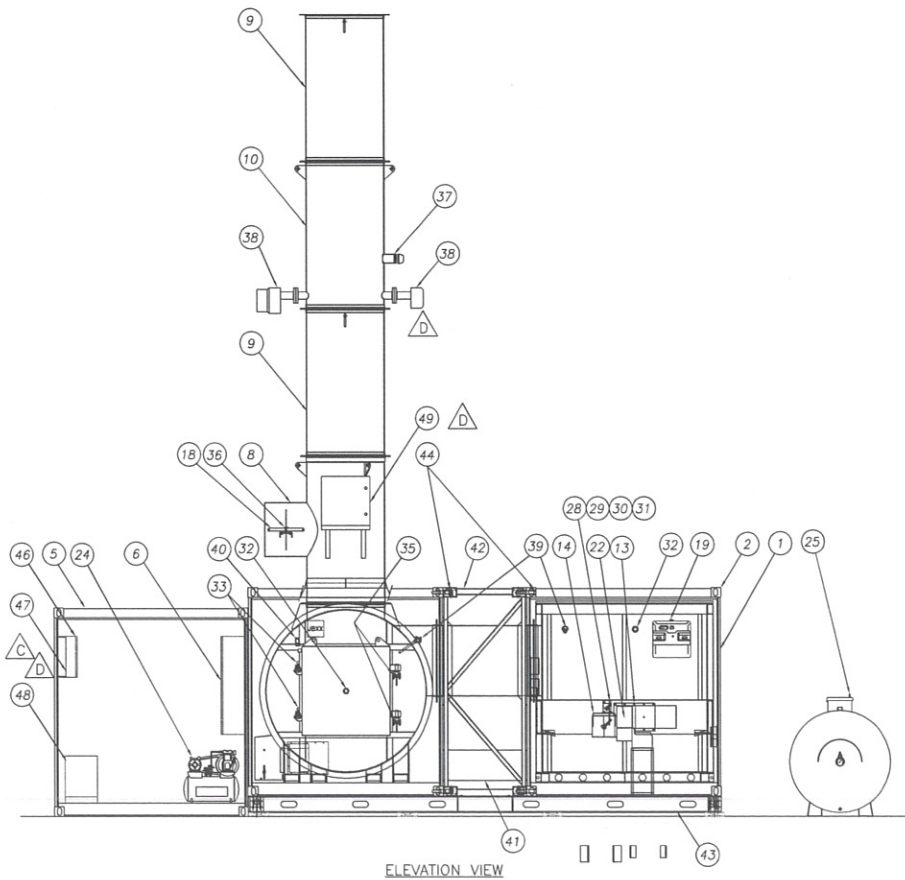
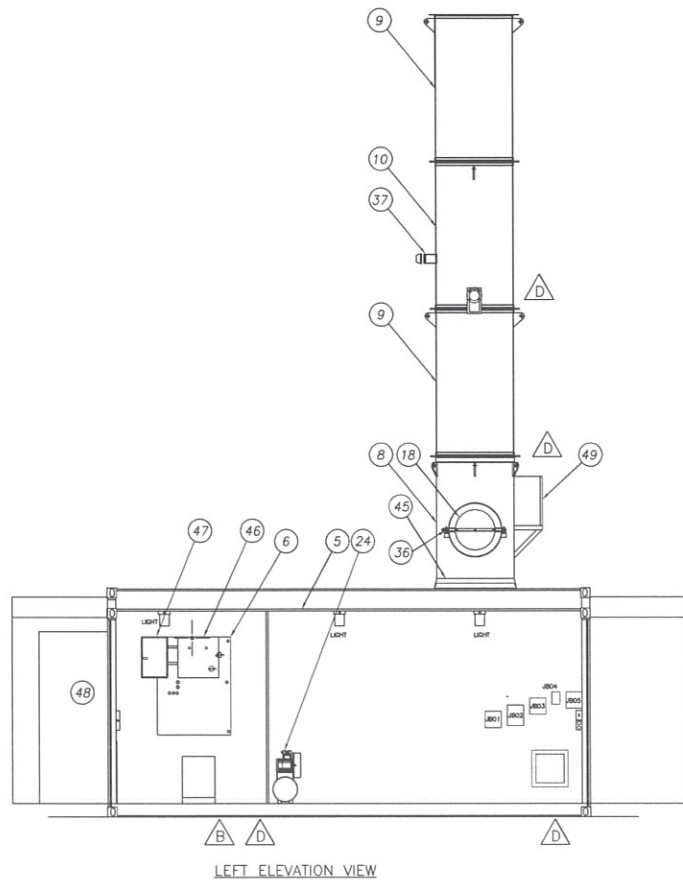




HATCH VENDOR DATA REVIEW			
Doc Number	E349000-TX001-00-042-0004	Sub	04
Date Received			
Review Grade		Next Submittal Status	
<input type="checkbox"/> C1 - Proceed to next submission & status		<input type="checkbox"/> Internal Review	
<input type="checkbox"/> C2 - Proceed with exceptions as noted to next submission & status		<input type="checkbox"/> Certified Final	
<input type="checkbox"/> C3 - Do not proceed, revise as noted & resubmit		<input type="checkbox"/> Final	
		<input type="checkbox"/> As-Built	
		Next Submittal Date:	
No further submission required - Complete		<input type="checkbox"/>	
<input type="checkbox"/> C4 - No further submission required - Cancelled		<input type="checkbox"/>	
No further submission required - Superseded		<input type="checkbox"/>	
Package Coordinator: Name, signature and Date:			
REVIEWED ONLY FOR GENERAL CONFORMITY WITH THE SPECIFICATIONS. ACCEPTANCE BY THE ENGINEER DOES NOT WARRANT OR REPRESENT THAT THE INFORMATION CONTAINED ON THIS DRAWING/DOCUMENT IS EITHER ACCURATE OR COMPLETE. THE SOLE RESPONSIBILITY FOR CORRECT DESIGN, DETAILS & DIMENSIONS SHALL REMAIN WITH THE PARTY SUBMITTING THE DRAWING/DOCUMENT.			



BILL OF MATERIAL - MASTER SYSTEM ASSEMBLY		
ITEM	QTY	DESCRIPTION
1	1	PRIMARY CHAMBER CONTAINER
2	1	PRIMARY CHAMBER
3	1	SECONDARY CHAMBER CONTAINER
4	1	SECONDARY CHAMBER
5	1	CONTROL PANEL CONTAINER
6	1	MAIN CONTROL PANEL
7	1	BREECH SECTION
8	1	T-SECTION STACK
9	2	STACK SECTION
10	1	STACK SECTION WITH TEST PORTS
11	1	PRIMARY CHAMBER DOOR ASSEMBLY
12	1	SECONDARY CHAMBER DOOR ASSEMBLY
13	1	PRIMARY BLOWER OUTLET DAMPER & SLIDING GATE
14	1	PRIMARY BLOWER INLET DAMPER ASSEMBLY
15	1	SECONDARY BLOWER OUTLET DAMPER & SLIDING GATE
16	1	SECONDARY BLOWER INLET DAMPER ASSEMBLY
17	1	WASTE OIL BURNER SLIDE FRAME ASSEMBLY
18	1	STACK DAMPER ASSEMBLY
19	1	PRIMARY CHAMBER BURNER
20	1	SECONDARY CHAMBER BURNER
21	1	WASTE OIL BURNER - J PUMP
22	1	PRIMARY CHAMBER BLOWER
23	1	SECONDARY CHAMBER BLOWER
24	1	WASTE OIL BURNER COMPRESSOR
25	1	DIESEL TANK (4500L)
26	1	WASTE OIL TANK C/W MIXER AND IMMERSION HEATER
27	2	AIR PROVING SWITCH (0.5-1" WC)
28	2	MODUTROL MOTOR
29	2	MOTOR CRANK ARM
30	2	DAMPER CRANK ARM
31	2	BALL JOINT
32	5	2" VIEW PORT (2" NPT SIGHT GLASS)
33	6	TOGGLE CLAMP
34	3	PRIMARY CHAMBER DOOR BEARING
35	2	SECONDARY CHAMBER DOOR BEARING
36	2	T-STACK DAMPER DEARING
37	2	STACK TEST PORT C/W CAP
38	2	OPACITY MONITOR WITH SAMPLING PORT
39	2	THERMOCOUPLE (WITH PROTECTION TUBE)
40	4	LIMIT SWITCH (WITH LEVER)
41	1	UTILITY CONDUIT
42	2	CONTAINER SPACER
43	1	CONTAINER BASE FRAME ASSEMBLY
44	8	CONTAINER C-BRIDGE CLAMP (B1014-1-G)
45	1	STACK FLASHING (C/W STORM COLLARS)
46	1	MAIN DISCONNECT
47	1	AUXILIARY POWER BREAKER PANEL
48	1	15 KVA TRANSFORMER
49	1	OPACITY MONITOR AIR PURGE ASSEMBLY

19/JUL/13	ADD JUNCTION BOX AND CEMS, OPACITY MONITOR	JK	
11/JUL/13	UPDATED ACCORDING TO FEED BACK	JK	
18/JAN/13	UPDATED ACCORDING TO FEED BACK	JK	
22/MAY/13	INITIAL RELEASE	JK	
REV.	DATE	DESCRIPTION	BY
THIS DOCUMENT IS THE PROPERTY OF ECO WASTE SOLUTIONS INC. AND SHALL NOT BE USED, COPIED OR TRANSFERRED TO OTHER DOCUMENTS WITHOUT PRIOR WRITTEN PERMISSION OF ECO WASTE SOLUTIONS			
PROJECT NAME:		CONTRACT No.	
MARY RIVER IRON ORE PROJECT			
PROJECT NUMBER:		DIN No.	
H349000-TX001			
DRAWN	DATE	CHECKED	DATE
JK	22 MAY 2013	JK	23-Jul-13
SCALE:	TITLE:		
1:45	GENERAL ASSEMBLY		
JOB NO.	ECO M2TN MOBILE INCINERATOR		
-	DWG. NO.		
THIRD ANGLE	MASTER SYSTEM ASSEMBLY-00B		
REV.			D