



Photo taken from the south east corner of the steel storage tank containment outside the containment looking north west.



Photo taken from atop the containment dyke looking west into the containment.



Photo taken from atop the soon to be decommissioned PWSP looking south.



Photo taken of central dyke in barrel fuel storage looking west.



Photos taken along rear dyke at hazardous waste storage area. Note water contained within dyke.



Photo shows temporary curbed area for hazardous waste awaiting immediate shipment.



Photo taken looking north at the covered contaminated granular from the bulk fuel storage facility undergoing decommissioning.



Photo taken from atop the south west corner of the New Sewage Effluent Pond looking north east.



Photo taken looking into the sump at the north east corner of the Landfarm.



Photo taken from atop the dyke looking into the contaminated snow containment.



Photo taken looking at the quarry face in the quarry showing the well developed benches and cover removed from atop solid rock.

PHOTOS

Milne Inlet September Inspection



Site of recently decommissioned bulk fuel containment



Existing PWSP now empty and being decommissioned



Site of recently decommissioned barrel fuel containment.



Hazardous waste storage containing bladder of contaminated material.



Fuel tank farm containment



New effluent pond



Land farm containment



Contaminated snow containment



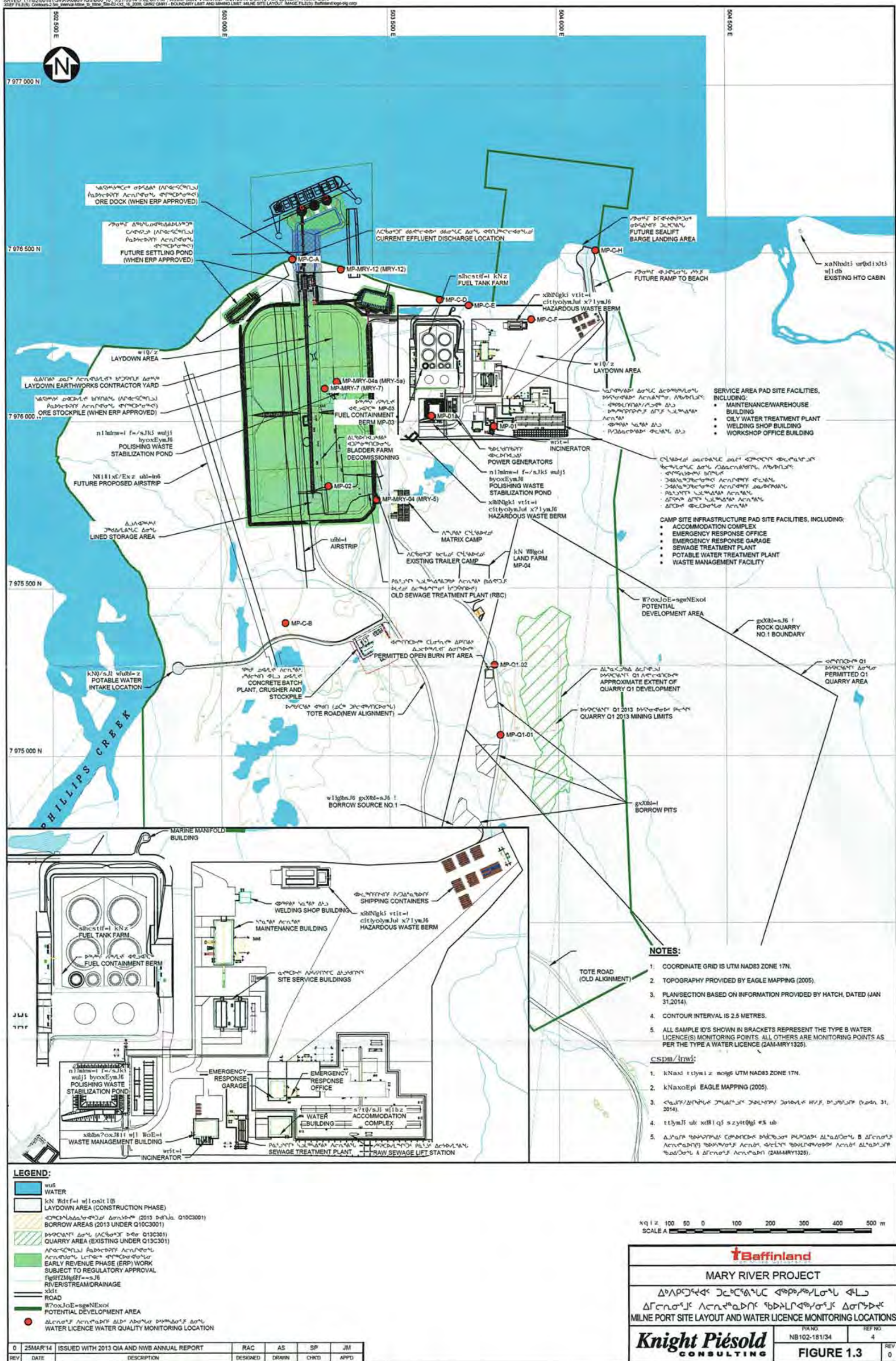
Sediment pond east



Sediment pond west



Quarry



Appendix C

List of Contractors

Table C.1-1: List of Contractors

HATCH (HATCH GLOBAL CORPORATE OFFICE) Sheridan Science & Technology Park 2800 Speakman Drive, Mississauga, ON L5K 2R7 Canada (EPCM CONTRACTOR) Tel: 1-905-855-7600 Fax: 1-905-855-8270	NUNA EAST LIMITED 9839 – 31 Avenue NW Edmonton, AB T6N 1C5 Canada (EARTHWORKS) Tel: 1-780-434-9114 Fax: 1-780-434-7758
GROUPE LAFRAMBOISE LTÉE 212 Rue Galipeau Thurso, QC J0X 3B0 Canada (ABOVE GROUND TANK CONSTRUCTION/INSTALLATION) Tel: 613-933-6664 Fax: 613-933-9910	LAYFIELD CANADA LIMITED Unit 2, 117 Basaltic Road Vaughan, ON L4L 1G4 Canada (LINER INSTALLATION) Tel: 1-289-982-0415 Fax: 1-289-982-0419
GEM-STEEL EDMONTON LIMITED 9060 – 24 Street Edmonton, AB T6P 1X8 Canada (ABOVE GROUND TANK CONSTRUCTION/INSTALLATION) Tel: 1-780-449-0000 Fax: 1-780-449-0001	ADCO IKPIARYUK LIMITED 8750 58th Avenue Edmonton, AB T6E 6G6 Canada (FUEL DISPENSING MODULE PLACEMENT) Tel: 1-780-465-3265 Fax: 1-780-466-8086
SEI INDUSTRIES LTD 7400 Wilson Ave Delta, BC V4G 1E5 Canada (FUEL DISPENSING MODULES) Tel: 1-604-946-3131 Fax: 1-604-940-9566	

Appendix D

Earthworks and Secondary Containment

- A. E349000-YX001-00-124-0003 Sub01 Tank Farm Dyke Modification **[69 pages]**
- B. E349000-YX001-00-124-0004 Sub01 Tank Farm Dyke Extension **[205 pages]**

The above turnover reports include the following sections as submitted by Nuna East Ltd:

- Section 1: Completion of Construction Declaration
- Section 2: Inspection & Test Plan
- Section 3: As-Built Drawings
- Section 4: Survey Data
- Section 5: Statements of Compliance
- Section 6: Request for Information Documentation
- Section 7: Quality Surveillance Reports
- Section 8: Liner Data
- Section 9: Material Test Reports
- Section 10: Construction Photos
- Section 11: Signature Log

HATCH				VENDOR DATA REVIEW	
Doc Number	E349000-YX001-00-124-0003	Sub	01		
Date Received					
Review Grade			Next Submittal Status		
<input type="checkbox"/> C1 – Proceed to next submission & status			<input type="checkbox"/> Internal Review <input type="checkbox"/> Certified Final <input type="checkbox"/> Final <input type="checkbox"/> As-Built		
<input type="checkbox"/> C2 – Proceed with exceptions as noted to next submission & status			Next Submittal Date:		
<input type="checkbox"/> C3 – Do not proceed, revise as noted & resubmit					
No further submission required - Complete			<input type="checkbox"/>		
<input type="checkbox"/> C4 - No further submission required - Cancelled			<input type="checkbox"/>		
No further submission required - Superseded			<input type="checkbox"/>		
Package Coordinator: Name, signature and Date:					
<small>REVIEWED ONLY FOR GENERAL CONFORMITY WITH THE SPECIFICATIONS. ACCEPTANCE BY THE ENGINEER DOES NOT WARRANT OR REPRESENT THAT THE INFORMATION CONTAINED ON THIS DRAWING/DOCUMENT IS EITHER ACCURATE OR COMPLETE. THE SOLE RESPONSIBILITY FOR CORRECT DESIGN, DETAILS & DIMENSIONS SHALL REMAIN WITH THE PARTY SUBMITTING THE DRAWING/DOCUMENT.</small>					



NUNA EAST LTD

Job # 2611.1
BIM Ref # 2.3.1.10

Tank Farm
Containment Dyke
Modification
Milne Port



Pane 4



NUNA EAST LTD

Job # 2611.1

BIM 2.3.1.10

Tank Farm
Containment
Dyke
Modification

Milne Port

Mary River
Project
ERP

Section 1
Completion of Construction Declaration

Section 2
Inspection & Test Plan

Section 3
As-Built Drawings

Section 4
Survey Data

Section 5
Statements of Compliance

Section 6
Request for Information
Documentation

Section 7
Quality Surveillance Reports

Section 8
Liner Data

Section 9
Material Test Reports

Section 10
Construction Pictures

Section 11
Signature Log



NUNA EAST LTD

Section 1

Completion of Construction Declaration



NUNA EAST LTD

COMPLETION OF CONSTRUCTION


DECLARATION

NOTE: This declaration shall be completed and signed by the person responsible, in whole or part, for the construction, installation, testing and inspection of the project indicated below.

1. **Owner of the facility:** Baffinland Iron Mines Corp.
 2. **Contractor:** Nuna East Ltd.
 3. **Construction:** Job # 2611.1 BIM 2.3.1.10 Tank Farm Containment Dyke Modification
 4. **Location:** Milne Port
 5. **Description:** Aggregate Fuel Tank Farm Dyke
-

STATEMENT OF COMPLIANCE

I, the undersigned, declare that the described project complies in all respects with the regulations and codes for construction, installation, testing and inspection of the above listed construction and all applicable turn over documentation has been forwarded to the owner.

	<u>Bradford Watkin</u>	<u>Quality Manager</u>	<u>OCT 3, 2013</u>
(Signature)	(Name)	(Title)	(Date)
<u>Nuna East Ltd</u>	<u>9839 - 31 Avenue,</u>	<u>Edmonton, AB, T6N 1C5</u>	
(Company)	(Address)	(City, Postal Code)	



NUNA EAST LTD

Section 2

Inspection & Test Plan

QUALITY CONTROL INSPECTION and TEST PLAN (Aggregate Construction)

Client: Baffinland Iron Mines ERP-Hatch Engineering

Revision: 0

Job No.: 2611.1 BIM Ref # 2.3.1.10

Contract No.: H34900-CC001

P.O. No.:

Date: June 5, 2013

Item/Description: Milne Port-Tank Farm
Containment Dyke Modification

Drawing No.(s): See page 4

PID No.(s): N/A

Legend:

H: A mandatory hold on manufacturer until release by inspector or official waiver from client.

M: Inspection stage by inspector on a spot basis, but not a mandatory hold point.

HR: A mandatory review and acceptance/approval of specified document.

W: To be informed and invited to inspect. Fabrication to continue if inspector does not attend.

R: Review of test report/certifications.

A: Audit (Review at Random).



Activity No.	QUALITY RELATED ACTIVITY	REFERENCE DOCUMENTS	ACCEPTANCE CRITERIA	DOCUMENT CERTIFICATION REQUIRED	NUNA			HATCH			BIM		
					Hold	Sign	Date	Hold	Sign	Date	Hold	Sign	Date
01.	Verify Engineering Aggregate Specifications.	Quarried Fill Materials Section: S31 12 13, IFC Engineered Design Drawings.	As per "IFC" Drawings and Specification.	IFC Work Package.	H	BW	6/5/13	H	TB	6/5/13			
02.	Sampling of Crusher produced material meets specification. • Type 5. • -2mm fines.	Quarried Fill Materials Section: S31 12 13, IFC Engineered Design Drawings.	As per "IFC" Specifications.	Initialed ITP, Statement of Compliance to Engineering Specification Form.	H	BW	6/9/13	H	TB	6/9/13			
03.	Area of works Survey complete.	IFC Engineered Design Drawings.	As per "IFC" Drawings.	Initialed ITP, Survey Report. <i>SEE OPH COATS.</i>	H	BW	6/5/13	H	TB	6/5/13			
04.	Existing Tank-001 West Containment Dyke removed. Exposing Liner.	IFC Engineered Design Drawings.	As per "IFC" Drawings and Specifications.	Initialed ITP.	H	ML	6/14/13	W	ML	6/5/13			
05.	Liner rolled back for re-fusion to new liner for Tank Farm Dyke Modification.	Geotextiles Section: S31 05 19.13 Geomembranes Section: S31 05 19.16, IFC Engineered Design Drawings.	As per "IFC" Drawings and Specifications.	Initialed ITP.	H	ML	8/14/13	H	ML	6/5/13			
06.	Existing surface for Tank-002 acceptable for new tank pedestal installation.	IFC Engineered Design Drawings.	As per "IFC" Drawings and Specification.	Initialed ITP, Survey Report. <i>SEE 2011 COATS.</i>	H	BW	6/4/13	H	TB	6/4/13			
07.	Placement of Geotextile liner completed. • Non-woven.	Geotextiles Section: S31 05 19.13 IFC Engineered Design Drawings.	As per "IFC" Drawings and Specification.	Initialed ITP, sub-contractor documentation.	H	BW	6/5/13	H	TB	6/5/13			
08.	Placement of HDPE liner. • Type 1	Geomembranes Section: S31 05 19.16, IFC Engineered Design Drawings.	As per "IFC" Drawings and Specification.	Initialed ITP, sub-contractor documentation.	H	BW	6/5/13	H	TB	6/5/13			

QUALITY CONTROL INSPECTION and TEST PLAN (Aggregate Construction)

Client: Baffinland Iron Mines ERP-Hatch Engineering

Revision: 0

Job No.: 2611.1 BIM Ref # 2.3.1.10

Contract No.: H34900-CC001

P.O. No.:

Date: June 5, 2013

Item/Description: Milne Port-Tank Farm
Containment Dyke Modification

Drawing No.(s): See page 4

PID No.(s): N/A

Legend:

H: A mandatory hold on manufacturer until release by inspector or official waiver from client.

M: Inspection stage by inspector on a spot basis, but not a mandatory hold point.

HR: A mandatory review and acceptance/approval of specified document.

W: To be informed and invited to inspect. Fabrication to continue if inspector does not attend.

R: Review of test report/certifications.

A: Audit (Review at Random).



Activity No.	QUALITY RELATED ACTIVITY	REFERENCE DOCUMENTS	ACCEPTANCE CRITERIA	DOCUMENT CERTIFICATION REQUIRED	NUNA			HATCH			BIM		
09.	Rigid Insulation Installation completed. • 2 layers of Highload 60 38mm thick.	Board Insulation Section: S07 21 13 IFC Engineered Design Drawings.	As per "IFC" Drawings and Specification.	Initialed ITP.	H	BW	6/9/13	H	TB	6/9/13			
10.	Placement of HDPE liner. • Type 1	Geomembranes Section: S31 05 19.16, IFC Engineered Design Drawings.	As per "IFC" Drawings and Specification.	Initialed ITP, sub-contractor documentation.	H	BW	6/9/13	H	TB	6/9/13			
11.	Placement of Geotextile liner completed. • Non-woven.	Geotextiles Section: S31 05 19.13 IFC Engineered Design Drawings.	As per "IFC" Drawings and Specification.	Initialed ITP, sub-contractor documentation.	H	BW	6/9/13	H	TB	6/9/13			
12.	Placement of first lift of 100mm crusher fines. • -2mm	Quarried Fill Materials Section: S31 12 13 IFC Engineered Design Drawings.	As per "IFC" Drawings and Specification.	Initialed ITP, Survey Report.	H	BW	6/13/13	H	M.C	6/13/13			
13.	Compaction of first lift of 100mm crusher fines completed.	Quarried Fill Materials Section: S31 12 13 Placement of Fill Section: S31 12 12 IFC Engineered Design Drawings.	As per "IFC" Drawings and Specification.	Initialed ITP.	H	BW	6/13/13	H	M.C	6/13/13			
14.	Placement of Type 5 crush completed. • 200mm lifts. • Total of 1224mm.	Quarried Fill Materials Section: S31 12 13 Placement of Fill Section: S31 12 12 IFC Engineered Design Drawings.	As per "IFC" Drawings and Specification.	Initialed ITP, Survey Report.	H	MP	6/20/13	H	M.C	6/17/13			
15.	Compaction of Type 5 crush completed.	Quarried Fill Materials Section: S31 12 13 Placement of Fill Section: S31 12 12 IFC Engineered Design Drawings.	As per "IFC" Drawings and Specification.	Initialed ITP.	H	MP	6/20/13	H	M.C	6/18/13			

QUALITY CONTROL INSPECTION and TEST PLAN (Aggregate Construction)

Client: Baffinland Iron Mines ERP-Hatch Engineering

Revision: 0

Job No.: 2611.1 BIM Ref # 2.3.1.10

Contract No.: H34900-CC001

P.O. No.:

Date: June 5, 2013

Item/Description: Milne Port-Tank Farm
Containment Dyke Modification

Drawing No.(s): See page 4

PID No.(s): N/A

Legend:

H: A mandatory hold on manufacturer until release by inspector or official waiver from client.

M: Inspection stage by inspector on a spot basis, but not a mandatory hold point.

HR: A mandatory review and acceptance/approval of specified document.

W: To be informed and invited to inspect. Fabrication to continue if inspector does not attend.


R: Review of test report/certifications.

A: Audit (Review at Random).



Activity No.	QUALITY RELATED ACTIVITY	REFERENCE DOCUMENTS	ACCEPTANCE CRITERIA	DOCUMENT CERTIFICATION REQUIRED	NUNA		HATCH		BIM		
16.	Placement of second lift of 100mm crusher fines. • -2mm	Quarried Fill Materials Section: S31 12 13 IFC Engineered Design Drawings.	As per "IFC" Drawings and Specification.	Initialed ITP, Survey Report.	H	MC 6/20/13	H	MC 6/20/13			
17.	Compaction of second lift of 100mm crusher fines completed.	Quarried Fill Materials Section: S31 12 13 Placement of Fill Section: S31 12 12 IFC Engineered Design Drawings.	As per "IFC" Drawings and Specification.	Initialed ITP.	H	MP 6/20/13	H	MC 6/20/13			
18.	Electrical Grounding conductor installation completed. • Installation to be within second crusher fines lift above liner system.	Basic Electrical Requirements Section: S26 00 50 IFC Engineered Design Drawings.	As per "IFC" Drawings and Specification.	Initialed ITP, Substantial Completion of Grounding form.	H	MC 8/16/13	H	Ⓟ 09/20/13			
19.	Final inspection completed.	QMS	As per code and client specifications	ITP	H	JG 9/2/13	H	Ⓟ 09/20/13			
20.	Punchlist generated and closed.	QMS	As per code and client specifications	Punchlist Signoff	H	JG 9/2/13		Ⓟ 09/20/13			
21.	NCR's closed.	QMS	As per code and client specifications	NCR Log signed off as closed	H			N/A			
22.	As-builts Completed.	Contract documents	As per Client	As-built drawings	H	BW 10/3/13					
23.	Inspection Acceptance and Sign-Off Form signed by Engineer of record.	Nuna QMS.	Engineer Signature.	Initialed ITP.	H	JG 9/2/13		Ⓟ 09/20/13			
24.	Turnover package completed and sent to client.	Nuna QMS	Code, applicable specification.	Quality Control Turnover package.	H	BW 10/3/13					

QUALITY CONTROL INSPECTION and TEST PLAN (Aggregate Construction)

Client: Baffinland Iron Mines ERP-Hatch Engineering			Revision: 0	
Job No.: 2611.1 BIM Ref # 2.3.1.10	Contract No.: H34900-CC001	P.O. No.:	Date: June 5, 2013	
Item/Description: Milne Port-Tank Farm Containment Dyke Modification	Drawing No.(s): See page 4	PID No.(s): N/A		
Legend: H: A mandatory hold on manufacturer until release by inspector or official waiver from client. M: Inspection stage by inspector on a spot basis, but not a mandatory hold point. HR: A mandatory review and acceptance/approval of specified document. W: To be informed and invited to inspect. Fabrication to continue if inspector does not attend. R: Review of test report/certifications. A: Audit (Review at Random).				

Activity No.	QUALITY RELATED ACTIVITY	REFERENCE DOCUMENTS	ACCEPTANCE CRITERIA	DOCUMENT CERTIFICATION REQUIRED	NUNA	HATCH	BIM
--------------	--------------------------	---------------------	---------------------	---------------------------------	------	-------	-----

*Note: 1.) ITP Sign-Off is based on supporting documentation.

Drawings:

- Drawing Number: H349000-2613-10-014-0002 Rev 0 (IFC)
- Drawing Number: H349000-2613-10-035-0001 Rev 0 (IFC)
- Drawing Number: H349000-2613-10-035-0005 Rev 0 (IFC)

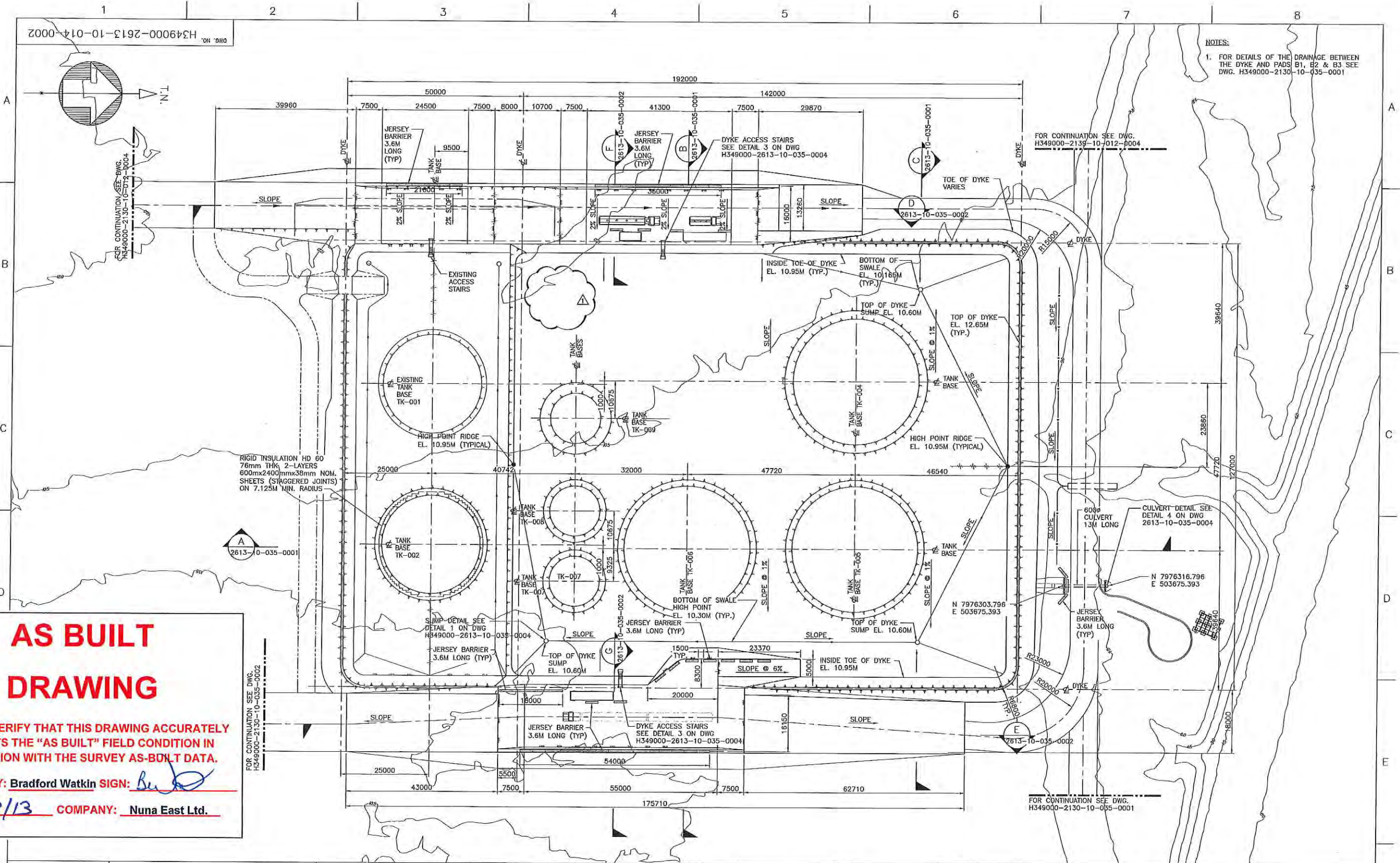
Customer Acceptance:	_____	_____	_____
	(Print)	(Sign)	(Date)



NUNA EAST LTD

Section 3

As-Built Drawings



AS BUILT DRAWING

I HEREBY VERIFY THAT THIS DRAWING ACCURATELY
REFLECTS THE "AS BUILT" FIELD CONDITION IN
CONJUNCTION WITH THE SURVEY AS-BUILT DATA.

AS BUILT BY: Bradford Watkin SIGN: BW
DATE: 10/9/13 COMPANY: Nuna East Ltd.

DRAWING NO.	DRAWING TITLE
1	REFERENCE DRAWINGS

THIS DRAWING WAS PREPARED FOR THE EXCLUSIVE USE OF BATHING
AND IS NOT TO BE USED FOR ANY OTHER PURPOSE. ANY REUSE
WITHOUT THE WRITTEN CONSENT OF THE ENGINEER IS PROHIBITED.
THE ENGINEER ASSUMES NO LIABILITY FOR ANY DAMAGE OR INJURY
RESULTING FROM THE USE OF THIS DRAWING OR ANY INFORMATION
CONTAINED HEREIN. THE USER ASSUMES ALL LIABILITY FOR ANY
DAMAGE OR INJURY RESULTING FROM THE USE OF THIS DRAWING
OR ANY INFORMATION CONTAINED HEREIN.

NO.	DESCRIPTION	BY	CHK'D	APP'D	DATE
1	SUMP DELETED	BW	CS	FD	13-06-13
2	TANK COORDINATES DELETED, DIMENSIONS ADDED	MP	DS	FB	13-05-14

REV.	ISSUE FOR	ISSUE FOR	DATE	DATE
1	ISSUED FOR CONSTRUCTION	DS	PD	13-06-13
2	ISSUED FOR CONSTRUCTION	DS	FB	13-05-14

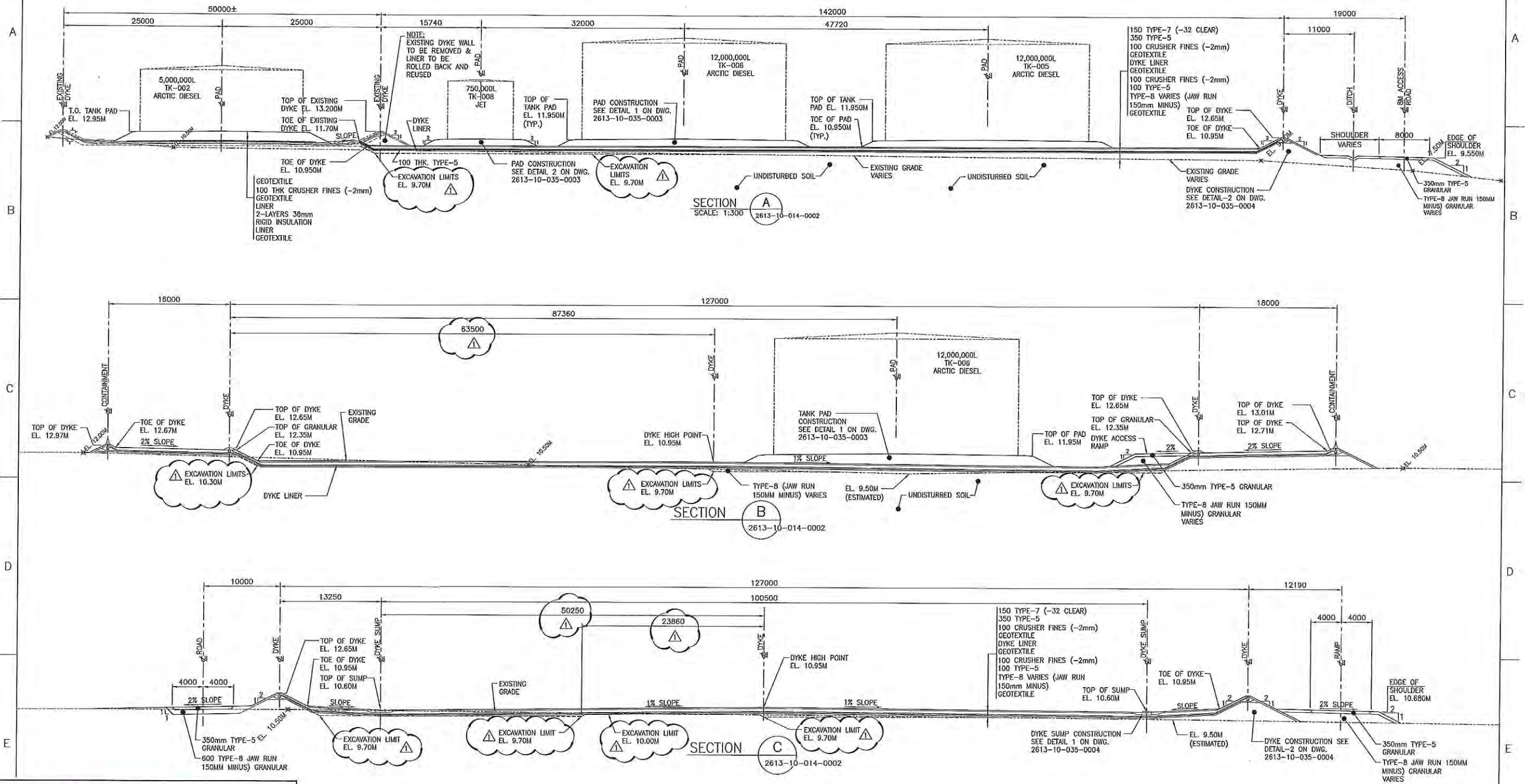
DESIGNED BY	DATE	CHECKED BY	DATE	PROJ. DES. COORD.	DATE	PROJ. MGR.	DATE
D. STEPHENSON	13-03-06	B. BERRY	13-06-13	T. THERTELL	13-06-13	S. PERRY	13-06-13

DRAWN BY	DATE	DISCIP. ENGR.	DATE	PROJ. ENGR.	DATE
M. PETERSON	13-03-06	J. CLELAND	13-06-13	J. CLELAND	13-06-13

SCALE	DWG. NO.	REV.
1:500 OR AS NOTED	H349000-2613-10-014-0002	1

\$\$\$DAYENTRY\$\$\$

H349000-2613-10-035-0001



AS BUILT DRAWING

I HEREBY VERIFY THAT THIS DRAWING ACCURATELY
REFLECTS THE "AS BUILT" FIELD CONDITION IN
CONJUNCTION WITH THE SURVEY AS-BUILT DATA.

AS BUILT BY: **Bradford Watkin** SIGN: *[Signature]*
DATE: **10/9/13** COMPANY: **Nuna East Ltd.**

THIS DRAWING WAS PREPARED FOR THE EXCLUSIVE USE OF BATHFORD
AND IS NOT TO BE REPRODUCED OR TRANSMITTED IN ANY FORM OR BY
ANY MEANS, ELECTRONIC OR MECHANICAL, INCLUDING PHOTOCOPYING,
RECORDING, OR BY ANY INFORMATION STORAGE AND RETRIEVAL SYSTEM,
WITHOUT THE WRITTEN PERMISSION OF BATHFORD. ANY UNAUTHORIZED
REPRODUCTION OR TRANSMISSION OF THIS DRAWING IS PROHIBITED
AND WILL BE CONSIDERED A VIOLATION OF THE COPYRIGHT ACT.

NO.	DESCRIPTION	BY	CHK'D	APP'D	DATE
1	SUMP DELETED, EXCAVATION LIMIT REVISED, DIMENSIONS ADDED	Ba	DS	FB	13-06-13



REV.	ISSUED FOR CONSTRUCTION	DS	FB	13-06-13
0	ISSUED FOR CONSTRUCTION	DS	FB	13-05-14

ISSUE AUTHORIZATION

DESIGNED BY: D. STEPHENSON
DATE: 13-03-06
CHECKED BY: B. WATKIN
DATE: 13-06-13
PROJ. DES. COORD.: T. THERTELL
DATE: 13-06-13
PROJ. MGR.: S. PERRY
DATE: 13-06-13

DRAWN BY: M. PETERSON
DATE: 13-02-21
DISCIP. ENGR.: J. CLELAND
DATE: 13-06-13
PROJ. ENGR.: J. CLELAND
DATE: 13-06-13

HATCH	Baffinland
MARY RIVER PROJECT	
MILNE PORT - SITE PREPARATION BULK FUEL STORAGE DYKE SECTIONS	
SCALE: 1:250 (OR AS NOTED)	DWG. NO. H349000-2613-10-035-0001 REV. 1

1 2 3 4 5 6 7 8

H349000-2613-10-035-0004

A

B

C

D

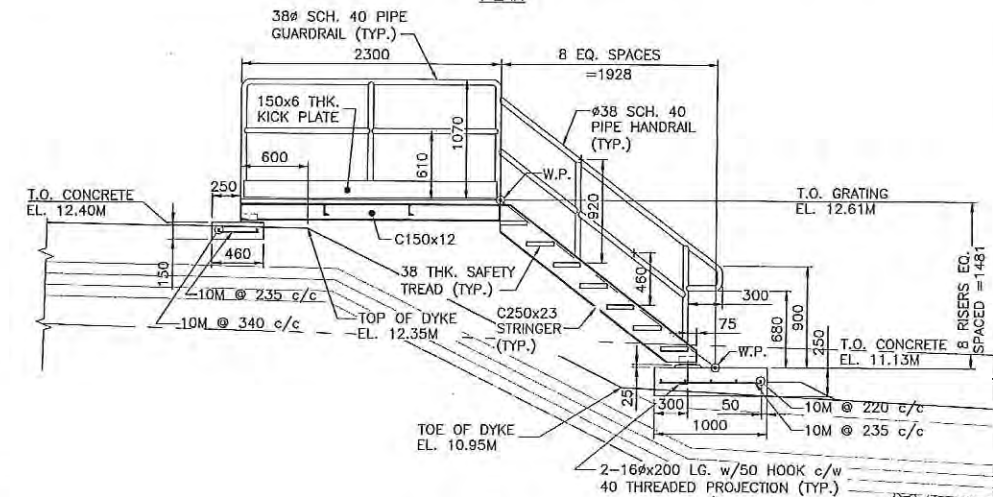
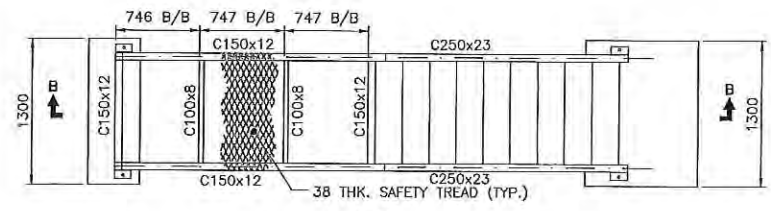
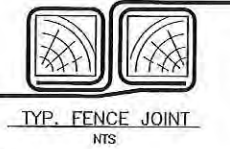
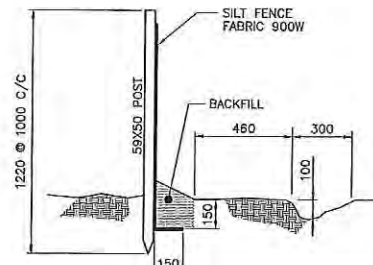
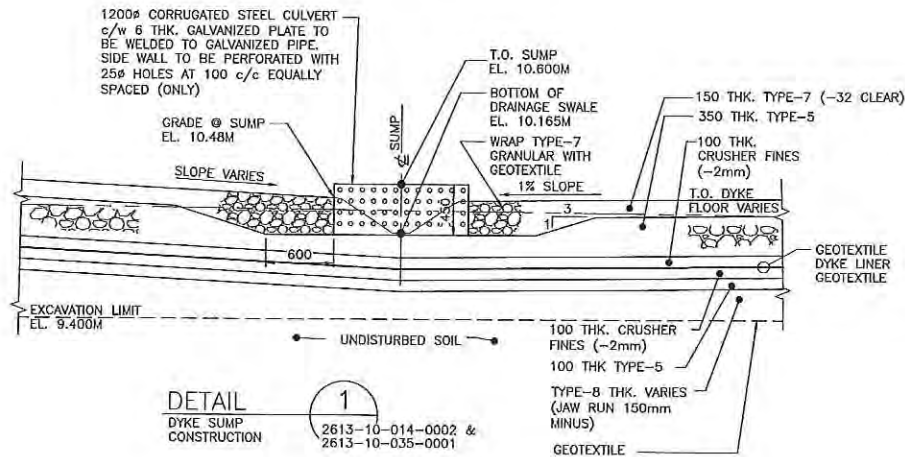
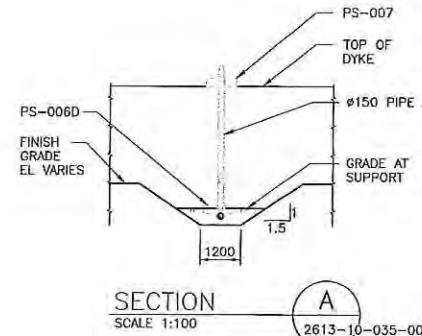
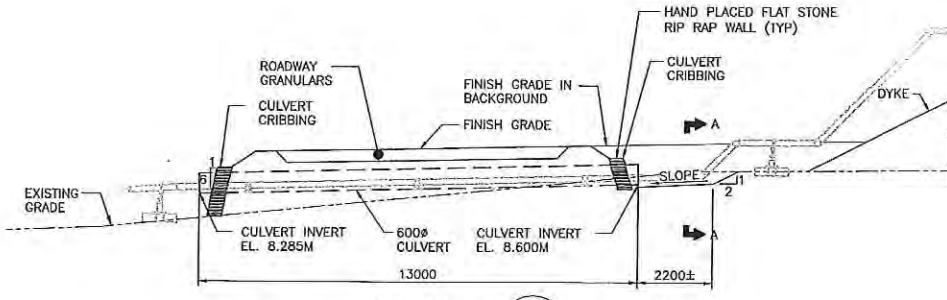
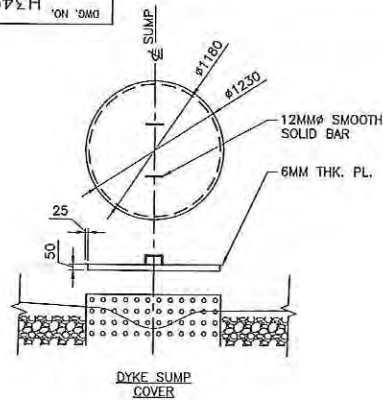
A

B

C

D

E

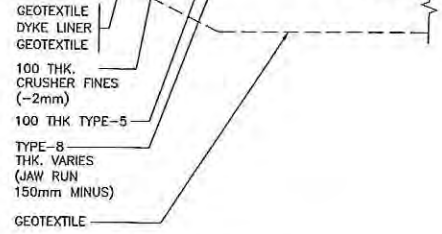


AS BUILT
DRAWING

I HEREBY VERIFY THAT THIS DRAWING ACCURATELY
REFLECTS THE "AS BUILT" FIELD CONDITION IN
CONJUNCTION WITH THE SURVEY AS-BUILT DATA.

AS BUILT BY: Bradford Watkin SIGN: BW
DATE: 10/9/13 COMPANY: Nuna East Ltd.

DETAIL 2
DYKE CONSTRUCTION
2613-10-014-0002 &
2613-10-035-0001 & 2



SECTION-B
DETAIL 3
DYKE ACCESS
STAIRS
2613-10-014-0002

DRAWING NO.		DRAWING TITLE		REFERENCE DRAWINGS		REVISIONS		ISSUE AUTHORIZATION		HATCH		Baffinland		MARY RIVER PROJECT		MILNE PORT - SITE PREPARATION BULK FUEL STORAGE DYKE SECTIONS AND DETAILS		DWG. NO. H349000-2613-10-035-0004		SCALE 1:30 OR AS NOTED		REV. 0	
1		2		3		4		5		6		7		8		9		10		11		12	



HATCH

DESIGNED BY
D. STEPHENSON
DATE 13-03-08
CHECKED BY
E. B. PERRY
DATE 13-05-14
PROJ. DES. COORD.
T. THERTELL
DATE 13-05-14
PROJ. MGR.
S. PERRY
DATE 13-05-14

DRAWN BY
M. PETERSON
DATE 13-03-08
DISCIP. ENGR.
J. CLELAND
DATE 13-05-14
PROJ. ENGR.
J. CLELAND
DATE 13-05-14

Baffinland

MARY RIVER PROJECT

MILNE PORT - SITE PREPARATION
BULK FUEL STORAGE
DYKE SECTIONS AND DETAILS

DWG. NO.
H349000-2613-10-035-0004

SCALE
1:30
OR AS NOTED

REV.
0

\$\$\$DATAENTRY\$\$\$



NUNA EAST LTD

Section 4

Survey Data

Job # 2611.1**Activity # 09**

Point #	Northing	Easting	Elevation	Description
8161002	7976121.305	503649.892	12.06	TOP OF INSULATION
8161003	7976121.239	503652.764	12.052	TOP OF INSULATION
8161004	7976121.107	503655.567	12.034	TOP OF INSULATION
8161005	7976120.933	503658.668	12.034	TOP OF INSULATION
8161006	7976120.749	503661.332	12.001	TOP OF INSULATION
8161007	7976120.546	503664.636	12.004	TOP OF INSULATION
8161008	7976120.389	503666.821	11.999	TOP OF INSULATION
8161009	7976120.269	503669.513	12.008	TOP OF INSULATION
8161010	7976120.035	503672.77	11.989	TOP OF INSULATION
8161011	7976119.845	503676.308	11.996	TOP OF INSULATION
8161012	7976119.702	503678.521	12.003	TOP OF INSULATION
8161013	7976116.358	503677.664	12.001	TOP OF INSULATION
8161014	7976116.628	503673.96	11.985	TOP OF INSULATION
8161015	7976117.308	503662.98	11.971	TOP OF INSULATION
8161016	7976118.26	503651.452	12.034	TOP OF INSULATION
8161017	7976114.6	503653.243	12.01	TOP OF INSULATION
8161018	7976113.674	503662.896	11.92	TOP OF INSULATION
8161019	7976112.79	503672.658	11.95	TOP OF INSULATION
8161020	7976109.746	503668.88	11.944	TOP OF INSULATION
8161021	7976109.684	503662.523	11.92	TOP OF INSULATION
8161022	7976110.836	503657.937	11.961	TOP OF INSULATION
8161023	7976112.61	503654.419	11.988	TOP OF INSULATION
8161024	7976114.561	503652.163	11.995	TOP OF INSULATION
8161025	7976125.036	503650.038	12.061	TOP OF INSULATION
8161026	7976124.246	503662.828	12.005	TOP OF INSULATION
8161027	7976123.51	503673.829	12.017	TOP OF INSULATION
8161028	7976123.239	503678.605	12.051	TOP OF INSULATION
8161029	7976128.537	503678.601	11.993	TOP OF INSULATION
8161030	7976129.209	503674.025	12.003	TOP OF INSULATION
8161031	7976129.757	503666.299	11.971	TOP OF INSULATION
8161032	7976130.085	503659.966	11.981	TOP OF INSULATION
8161033	7976130.26	503650.964	12.03	TOP OF INSULATION
8161034	7976134.438	503653.412	11.981	TOP OF INSULATION
8161035	7976134.528	503660.98	11.995	TOP OF INSULATION
8161036	7976134.134	503668.834	11.971	TOP OF INSULATION
8161037	7976133.68	503675.855	11.997	TOP OF INSULATION
8161038	7976137.519	503670.626	11.995	TOP OF INSULATION
8161039	7976137.751	503666.057	11.98	TOP OF INSULATION
8161040	7976137.873	503659.365	12.014	TOP OF INSULATION

Design Edge of Tank

Edge Tank 2 Insulation



Design Centerline of Dyke

25,000m



NOTES:

Job No: 2611.1 BIM Ref # 2.3.1.10
Rigid Insulation Installation: Activity #9

CLIENT:

Baffinland Iron Mines Corporation

PROJECT:

Mary River Project, Baffin Island, Nunavut

PREPARED BY:

Nuna East Ltd.
9639 - 31 Avenue
Edmonton, AB
T6N 1C5

DRAWN BY:
MTC



SCALE:
1 : 300

DATE:
Sept 30, 2013

DRAWING TITLE:

**Milne Port -Tank Farm
Modification Tank 2
Board Insulation**

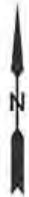
DRAWING NAME (FILENAME):
2611-9 Asbuilt TM Insulation 130810.dwg

Job # 2611.1**Activity # 10**

Point #	Northing	Easting	Elevation	Description
8159015	7976136.876	503653.521	11.9	WELD
8159016	7976137.826	503655.08	11.906	WELD
8159017	7976138.351	503656.33	11.907	WELD
8159018	7976138.759	503657.701	11.919	WELD
8159019	7976139.064	503658.869	11.925	WELD
8159020	7976139.133	503659.929	11.932	WELD
8159021	7976139.107	503661.231	11.902	WELD
8159022	7976139.072	503662.597	11.915	WELD
8159023	7976139.079	503663.835	11.911	WELD
8159024	7976139.049	503664.92	11.911	WELD
8159025	7976139.014	503666.044	11.923	WELD
8159026	7976138.982	503667.24	11.912	WELD
8159027	7976138.913	503668.583	11.907	WELD
8159028	7976138.885	503670.011	11.888	WELD
8159029	7976138.799	503671.35	11.903	WELD
8159030	7976138.455	503672.459	11.888	WELD
8159031	7976137.773	503673.616	11.881	WELD
8159032	7976136.95	503674.749	11.9	WELD
8159033	7976136.188	503675.686	11.898	WELD
8159034	7976135.118	503676.596	11.9	WELD
8159035	7976133.893	503677.413	11.896	WELD
8159036	7976132.653	503678.007	11.906	WELD
8159037	7976131.411	503678.452	11.895	WELD
8159038	7976130.146	503678.773	11.894	WELD
8159039	7976128.999	503678.862	11.9	WELD
8159040	7976128.222	503678.855	11.925	WELD
8159041	7976126.894	503678.815	11.921	WELD
8159042	7976125.672	503678.829	11.946	WELD
8159043	7976124.466	503678.781	11.962	WELD
8159044	7976123.031	503678.75	11.928	WELD
8159045	7976121.85	503678.733	11.92	WELD
8159046	7976120.398	503678.697	11.928	WELD
8159047	7976119.127	503678.667	11.892	WELD
8159048	7976118.361	503678.654	11.898	WELD
8159049	7976116.497	503678.087	11.896	WELD
8159050	7976115.392	503677.423	11.913	WELD
8159051	7976114.603	503676.833	11.916	WELD
8159052	7976113.89	503676.392	11.918	WELD
8159053	7976113.065	503675.84	11.898	WELD
8159054	7976112.356	503675.433	11.884	WELD
8159055	7976111.178	503674.545	11.847	WELD
8159056	7976110.389	503673.613	11.838	WELD

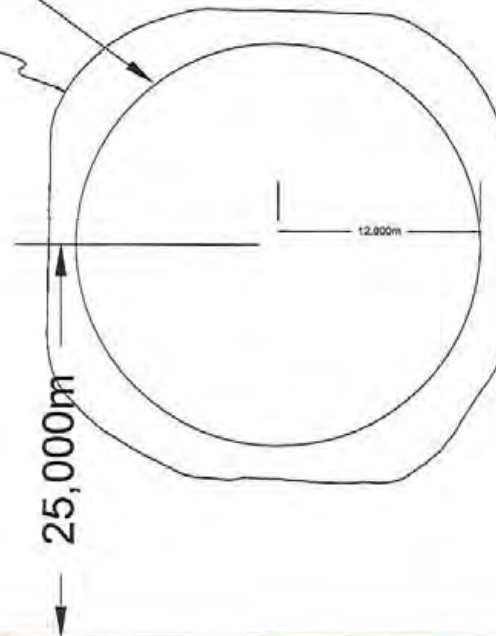
8159057	7976109.93	503672.908	11.848	WELD
8159058	7976109.479	503672.317	11.846	WELD
8159059	7976109.226	503671.754	11.841	WELD
8159060	7976109.091	503670.8	11.846	WELD
8159061	7976109.147	503669.977	11.852	WELD
8159062	7976109.169	503669.645	11.854	WELD
8159063	7976109.061	503668.992	11.835	WELD
8159064	7976109.088	503667.817	11.84	WELD
8159065	7976109.154	503666.622	11.834	WELD
8159066	7976109.221	503665.685	11.822	WELD
8159067	7976109.229	503665.507	11.821	WELD
8159068	7976109.325	503664.494	11.833	WELD
8159069	7976109.345	503663.422	11.818	WELD
8159070	7976109.447	503662.09	11.824	WELD
8159071	7976109.295	503661.601	11.81	WELD
8159072	7976109.268	503661.115	11.816	WELD
8159073	7976109.396	503659.921	11.832	WELD
8159074	7976109.435	503659.101	11.853	WELD
8159075	7976109.531	503658.491	11.851	WELD
8159076	7976109.664	503658.162	11.848	WELD
8159077	7976110.026	503657.403	11.853	WELD
8159078	7976110.46	503656.561	11.86	WELD
8159079	7976110.878	503655.665	11.862	WELD
8159080	7976111.354	503654.844	11.854	WELD
8159081	7976111.982	503653.861	11.859	WELD
8159082	7976112.489	503653.039	11.864	WELD
8159083	7976113.081	503652.37	11.887	WELD
8159084	7976113.546	503651.849	11.884	WELD
8159085	7976114.075	503651.364	11.874	WELD
8159086	7976114.538	503650.904	11.893	WELD
8159087	7976115.221	503650.396	11.914	WELD
8159088	7976116.034	503650.01	11.908	WELD
8159089	7976116.774	503649.797	11.905	WELD
8159090	7976117.641	503649.682	11.916	WELD
8159091	7976118.445	503649.61	11.909	WELD
8159092	7976118.704	503649.608	11.929	WELD
8159094	7976119.083	503649.64	11.923	WELD
8159097	7976119.775	503649.657	11.946	WELD
8159099	7976120.365	503649.645	11.951	WELD
8159100	7976121.388	503649.669	11.959	WELD
8159101	7976122.624	503649.69	11.969	WELD
8159102	7976123.334	503649.73	11.958	WELD
8159103	7976124.105	503649.739	11.98	WELD
8159104	7976125.043	503649.767	11.966	WELD
8159105	7976125.849	503649.789	11.949	WELD
8159106	7976125.903	503649.917	11.96	WELD
8159107	7976126.389	503649.752	11.949	WELD

8159108	7976127.161	503649.785	11.945	WELD
8159109	7976127.943	503649.804	11.947	WELD
8159110	7976128.358	503649.841	11.942	WELD
8159111	7976128.945	503649.834	11.934	WELD
8159112	7976129.752	503649.84	11.935	WELD
8159113	7976130.602	503649.837	11.936	WELD
8159114	7976131.614	503649.897	11.923	WELD
8159115	7976132.662	503650.172	11.891	WELD
8159116	7976133.875	503650.778	11.879	WELD
8159117	7976134.712	503651.347	11.873	WELD
8159118	7976135.502	503652.031	11.881	WELD
8159119	7976135.9	503652.435	11.9	WELD



Design Edge of Tank

HDPE Liner Seam



Design Centerline of Dyke



NOTES

Job # 2611.1 BIM ref # 2.3.1.10
Placement of HDPE Liner:Activity 10

CUSTOMER

Baffinland Iron Mines Corporation

PROJECT

Miky River Project, Baffin Island, Nunavut

PREPARED BY

Nuna East Ltd.
9839 - 31 Avenue
Edmonton, AB
T6N 1C5

DRAWN BY:
mc



SCALE:
1 : 300

DATE:
Sept 30, 2013

DRAWING TITLE

**Milne Port -Tank Farm
Modification Tank 2
HDPE Liner Seam**

DRAWING NAME (FILENAME)
2611-10Asbuilt TM Liner Weld130608.dwg

Job # 2611.1**Activity # 12**

Point #	Northing	Easting	Elevation	Description
8164001	7976109.617	503665.4	12.169	SAND
8164002	7976113.696	503665.087	12.186	SAND
8164003	7976118.3	503664.826	12.21	SAND
8164004	7976122.871	503664.338	12.151	SAND
8164005	7976128.12	503663.86	12.145	SAND
8164006	7976132.56	503663.388	12.098	SAND
8164007	7976136.951	503663.123	12.139	SAND
8164008	7976138.321	503667.056	12.106	SAND
8164009	7976133.93	503667.443	12.152	SAND
8164010	7976129.099	503667.906	12.116	SAND
8164011	7976124.635	503668.782	12.189	SAND
8164012	7976120.556	503669.598	12.167	SAND
8164013	7976115.691	503670.548	12.141	SAND
8164014	7976112.208	503670.556	12.201	SAND
8164015	7976109.595	503670.456	12.152	SAND
8164016	7976111.257	503673.485	12.204	SAND
8164017	7976114.874	503673.818	12.205	SAND
8164018	7976119.66	503673.171	12.218	SAND
8164019	7976124.44	503673.009	12.199	SAND
8164020	7976128.233	503672.8	12.185	SAND
8164021	7976132.065	503673.088	12.168	SAND
8164022	7976134.803	503673.118	12.179	SAND
8164023	7976137.077	503673.358	12.093	SAND
8164024	7976134.539	503676.852	12.172	SAND
8164025	7976130.836	503676.905	12.193	SAND
8164026	7976126.692	503676.625	12.19	SAND
8164027	7976122.835	503676.381	12.219	SAND
8164028	7976119.525	503676.08	12.178	SAND
8164029	7976115.94	503675.929	12.124	SAND
8164030	7976113.777	503676.029	12.17	SAND
8164031	7976117.912	503677.457	12.235	SAND
8164032	7976120.466	503678.17	12.173	SAND
8164033	7976123.826	503678.822	12.24	SAND
8164034	7976127.001	503678.73	12.161	SAND
8164035	7976130.521	503679.412	12.158	SAND
8164036	7976132.399	503678.488	12.097	SAND
8164037	7976133.886	503677.739	12.123	SAND
8164038	7976139.166	503660.338	12.129	SAND
8164039	7976136.082	503659.624	12.107	SAND
8164040	7976132.324	503659.644	12.117	SAND
8164041	7976128.132	503659.772	12.119	SAND
8164042	7976123.13	503660.084	12.136	SAND

8164043	7976118.876	503660.419	12.189	SAND
8164044	7976114.849	503660.656	12.174	SAND
8164045	7976111.556	503661.023	12.163	SAND
8164046	7976109.669	503661.068	12.154	SAND
8164047	7976109.88	503658.555	12.056	SAND
8164048	7976112.797	503658.271	12.16	SAND
8164049	7976116.289	503657.696	12.237	SAND
8164050	7976120.56	503657.19	12.173	SAND
8164051	7976123.443	503657.635	12.145	SAND
8164052	7976127.846	503657.279	12.162	SAND
8164053	7976132.879	503656.96	12.158	SAND
8164054	7976137.139	503656.442	12.109	SAND
8164055	7976138.203	503656.313	12.105	SAND
8164056	7976111.488	503654.972	12.123	SAND
8164057	7976115.8	503654.712	12.168	SAND
8164058	7976120.451	503654.884	12.177	SAND
8164059	7976124.29	503654.901	12.164	SAND
8164060	7976128.835	503654.564	12.115	SAND
8164061	7976132.81	503654.465	12.103	SAND
8164062	7976135.993	503654.398	12.136	SAND
8164063	7976135.05	503651.979	12.1	SAND
8164064	7976131.128	503651.782	12.153	SAND
8164065	7976126.886	503651.214	12.165	SAND
8164066	7976121.478	503650.883	12.159	SAND
8164067	7976117.472	503650.665	12.129	SAND
8164068	7976114.877	503677.016	12.15	SAND
8164069	7976138.548	503664.105	12.107	SAND
8164070	7976123.671	503649.035	12.096	SANDC
8164071	7976123.709	503649.005	11.97	SANDT
8164072	7976118.131	503649.19	12.101	SANDC
8164073	7976118.115	503648.902	11.897	SANDT
8164074	7976114.359	503649.499	12.065	SANDC
8164075	7976114.143	503649.254	11.864	SANDT
8164076	7976111.522	503652.722	12.102	SANDC
8164077	7976111.153	503652.622	11.829	SANDT
8164079	7976110.999	503654.584	11.837	SANDT
8164080	7976109.81	503656.363	12.132	SANDC
8164081	7976109.434	503656.349	11.845	SANDT
8164082	7976109.458	503661.813	12.14	SANDC
8164083	7976109.05	503661.973	11.813	SANDT
8164084	7976108.856	503669.474	12.16	SANDC
8164085	7976108.203	503669.431	11.82	SANDT
8164086	7976109.357	503672.75	12.125	SANDC
8164087	7976109.326	503672.944	11.851	SANDT
8164088	7976113.657	503676.505	12.177	SANDC
8164089	7976113.639	503676.7	11.894	SANDT
8164090	7976118.872	503678.709	12.213	SANDC

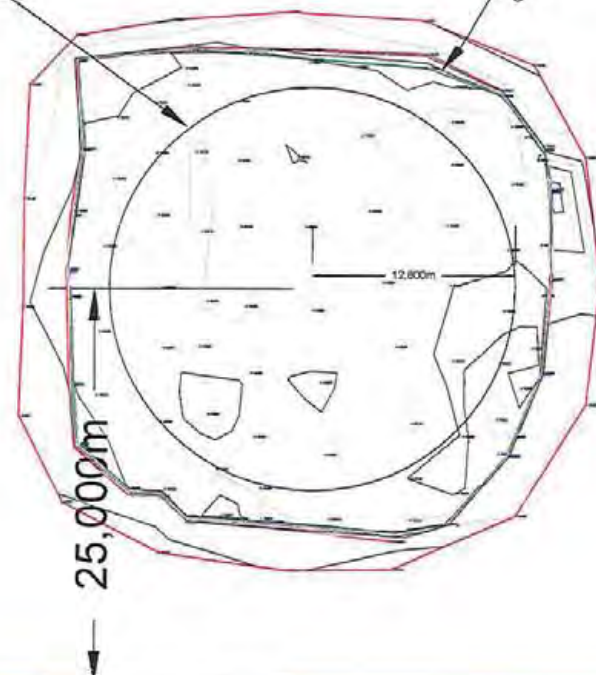
8164091	7976118.915	503678.863	11.859	SANDT
8164092	7976124.817	503679.202	12.167	SANDC
8164093	7976124.866	503679.41	11.936	SANDT
8164094	7976130.378	503679.175	12.175	SANDC
8164095	7976130.415	503679.228	11.842	SANDT
8164096	7976133.053	503678.811	12.102	SANDC
8164097	7976133.275	503678.845	11.865	SANDT
8164098	7976136.471	503676.199	12.11	SANDC
8164099	7976136.855	503676.183	11.865	SANDT
8164100	7976138.211	503671.552	12.075	SANDC
8164101	7976139.096	503671.525	11.865	SANDT
8164102	7976138.752	503664.316	12.091	SANDC
8164103	7976139.385	503664.194	11.889	SANDT
8164104	7976139.331	503656.78	12.124	SANDC
8164105	7976139.506	503656.689	11.911	SANDT
8164106	7976138.721	503649.448	12.007	SANDC
8164107	7976138.629	503649.253	11.86	SANDT
8164108	7976133.048	503649.95	12.137	SANDC
8164109	7976132.998	503649.651	11.885	SANDT
8164110	7976129.088	503649.396	12.141	SANDC
8164111	7976128.818	503649.028	11.916	SANDT
8164112	7976125.445	503648.838	12.109	SANDC
8164113	7976125.285	503648.748	11.947	SANDT
8164114	7976123.061	503646.033	11.892	EG
8164115	7976116.149	503645.748	11.893	EG
8164116	7976110.675	503648.489	11.791	EG
8164117	7976107.481	503654.6	11.77	EG
8164118	7976106.387	503662.638	11.809	EG
8164119	7976106.456	503669.319	11.762	EG
8164120	7976109.863	503677.099	11.851	EG
8164121	7976116.91	503681.522	11.842	EG
8164122	7976124.619	503682.419	11.921	EG
8164123	7976132.534	503681.467	11.869	EG
8164124	7976138.402	503678.249	11.791	EG
8164125	7976141.224	503671.275	11.801	EG
8164126	7976141.769	503662.74	11.847	EG
8164127	7976141.241	503655.507	11.797	EG
8164128	7976140.278	503649.417	11.814	EG
8164129	7976137.148	503646.438	11.819	EG
8164130	7976129.887	503646.103	11.842	EG



26-1001
(EXISTING)
AROMATIC CRACK
25.000m
0.25 m

Design Edge of Tank

Crest of Crusher Fines
over Liner (100mm)



Design Centerline of Dyke



NOTES:

Job No: 2611.1 BIM Ref # 2.3.1.10
Placement of first lift of crusher fines over liner: Activity # 12
Contour Interval 50mm

CLIENT
Baffinland Iron Mines Corporation

PROJECT
Mary River Project, Baffin Island, Nunavut

PREPARED BY
Nuna East Ltd.
9839 - 31 Avenue
Edmonton, AB
T6N 1C5

DRAWN BY
mc



SCALE
1 : 300

DATE
Sept 30, 2013

DRAWING TITLE
Milne Port -Tank Farm
Modification Tank 2
Fines above Liner

DRAWING NAME (SYS/DCS)
2611-12 Asbuilt TM Sand above Liner130613.dwg

Job # 2611.1**Activity # 14**

Point #	Northing	Easting	Elevation	Description
8166101	7976124.189	503664.258	12.939	As-built subbase
8166102	7976124.219	503650.395	12.815	As-built subbase
8166103	7976127.872	503650.712	12.808	As-built subbase
8166104	7976131.253	503652.148	12.834	As-built subbase
8166105	7976134.117	503654.361	12.827	As-built subbase
8166106	7976136.355	503657.258	12.825	As-built subbase
8166107	7976137.621	503660.682	12.836	As-built subbase
8166108	7976138.067	503664.283	12.811	As-built subbase
8166109	7976137.402	503667.875	12.791	As-built subbase
8166110	7976136.148	503671.126	12.82	As-built subbase
8166111	7976133.971	503673.881	12.82	As-built subbase
8166112	7976131.139	503676.09	12.815	As-built subbase
8166113	7976127.866	503677.64	12.83	As-built subbase
8166114	7976124.225	503677.958	12.833	As-built subbase
8166115	7976120.589	503677.875	12.637	As-built subbase
8166116	7976120.746	503677.101	12.835	As-built subbase
8166117	7976117.268	503676.307	12.729	As-built subbase
8166118	7976117.604	503675.468	12.82	As-built subbase
8166119	7976114.38	503674.057	12.754	As-built subbase
8166120	7976114.79	503673.652	12.82	As-built subbase
8166121	7976112.064	503671.219	12.842	As-built subbase
8166122	7976110.661	503667.86	12.788	As-built subbase
8166123	7976110.125	503664.24	12.721	As-built subbase
8166124	7976110.878	503664.191	12.788	As-built subbase
8166125	7976110.79	503660.594	12.816	As-built subbase
8166126	7976112.083	503657.183	12.84	As-built subbase
8166127	7976114.292	503654.4	12.818	As-built subbase
8166128	7976117.214	503652.1	12.851	As-built subbase
8166129	7976120.678	503650.713	12.817	As-built subbase