

May 22, 2026

Abid Jan  
Technical Advisor  
Nunavut Water Board  
P.O. Box 119  
Gjoa Haven, NU X0B 1J0

**Re: Notification of Construction of the Mary River Landfill Cells 1-3 – Type ‘A’ Water Licence 2AM-MRY2540**

Baffinland Iron Mines Corporation (Baffinland) plans to expand Landfill Cells 1–3, which are currently within the landfill's existing fenced limits. The expansion is required to align with current waste production schedules, and construction is planned to begin as early as **July 21, 2026**. A figure showing the total footprint and layout of the landfill has been provided in Attachment 1.

The design package including Issued for Construction (IFC) drawings for this work is provided in Attachment 2, which includes the following details.

- The base shall be graded to achieve a finished 2H:1V slope for the purpose of facility surface drainage;
- Disturbance will be limited to the seasonal active layer and will be minimized during construction to avoid impacts to underlying permafrost;
- Base preparation will consist of regrading the in-situ material to the specified design elevations, supplemented with imported fill where required to achieve the final design grade; and
- Excess cut material may be stockpiled for future use as landfill cover material.

The combined surface area of Landfill Cells 1-3 is approximately 32,000 m<sup>2</sup>, aligning with the footprint outlined in the Disturbed Area Analysis for Disturbed Area ID. MS-086 (see Attachment 1). Adequate security is currently in place for the initial work to proceed, as approved by both the QIA and the NWB.

It should be noted that the enclosed Notification of Construction only applies to Landfill Cells 1-3. Landfill Cells 4 and 5 are located outside of MS-086, and these cells are not scheduled for construction in 2026. Design for landfill Cells 4 and 5 will be further detailed within a future annual work plan and any associated regulatory submissions before work commences.

Baffinland will manage altered drainage patterns, and erosion/sedimentation risks during construction through routine inspections and if required, adaptive management corrective actions utilise existing SNP Water licence monitoring locations, in accordance with Type A Water Licence 2AM-MRY2540 and the Surface Water and Aquatic Ecosystem Management Plan (SWAEMP). A

summary of key construction controls, monitoring activities and trigger-based response actions is provided below:

1. Construction controls to be implemented at the work area
2. Monitoring through existing landfill SNP sites
3. Adaptive management response actions

Baffinland plans to begin the construction of the Landfill Cell 1-3 on July 21, 2026, with completion anticipated before the 2027 freshet.

We trust that this information meets the requirements under Part D of the Licence.

Regards,

A handwritten signature in blue ink, appearing to read "Elisabeth Luther".

Elisabeth Luther  
Senior Manager, Regulatory Affairs

Cc: Lou Kamermans, Matthew Wilson (Baffinland)

***Attachments***

*Attachment 1 Landfill Location Figure*

*Attachment 2 Design Drawings*

**Attachment 1**  
**Landfill Location Figure**

SAVED: C:\Users\Krislina.Poltras\Documents\ArcGIS\Projects\SD\Landfill Construction Notice\Landfill Construction Notice.aprx; 20-May-26



**LEGEND**

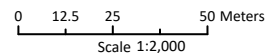
- Landfill Cell 1-3 Expansion Limit
- Current Limit of the Landfill
- Disturbed Area Analysis ID. MS-086

ᓄᓐᓇᓐ ᓄᓐᓇᓐᓇᓐᓇᓐ

MARY RIVER PROJECT

**Landfill Cell 1-3 Location**

Projection: NAD 1983 UTM ZONE 17N.  
Base Map: © 2025 PhotoSat Information Ltd.  
Imagery and Infrastructure are representative  
as of July 2025.



ᓄᓐᓇᓐᓇᓐᓇᓐᓇᓐ  
**FIGURE**

1

**Attachment 2**  
**Design Drawings**



# MARY RIVER LANDFILL DETAILED DESIGN

## MARY RIVER, NUNAVUT

Prepared for:



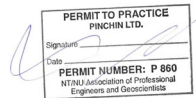
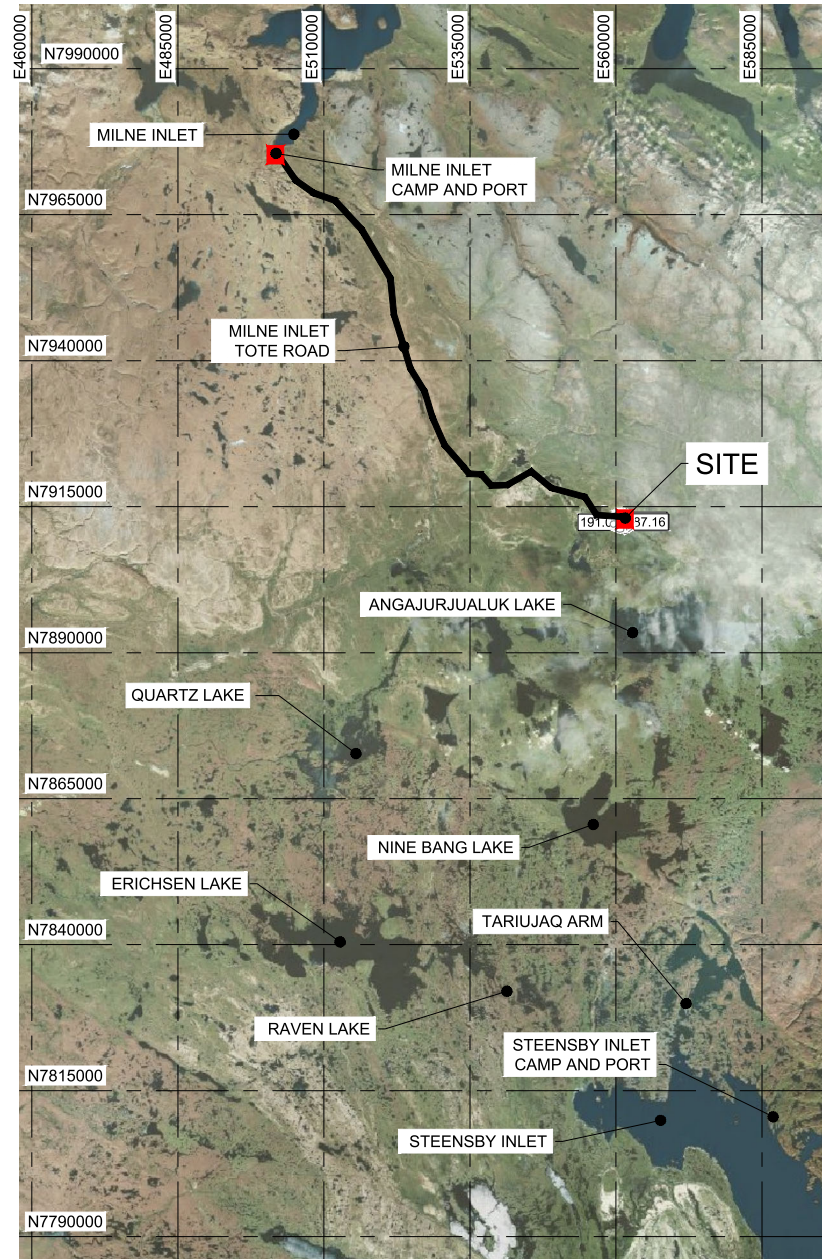
Pinchin File: 353700.001

### LIST OF DRAWINGS:

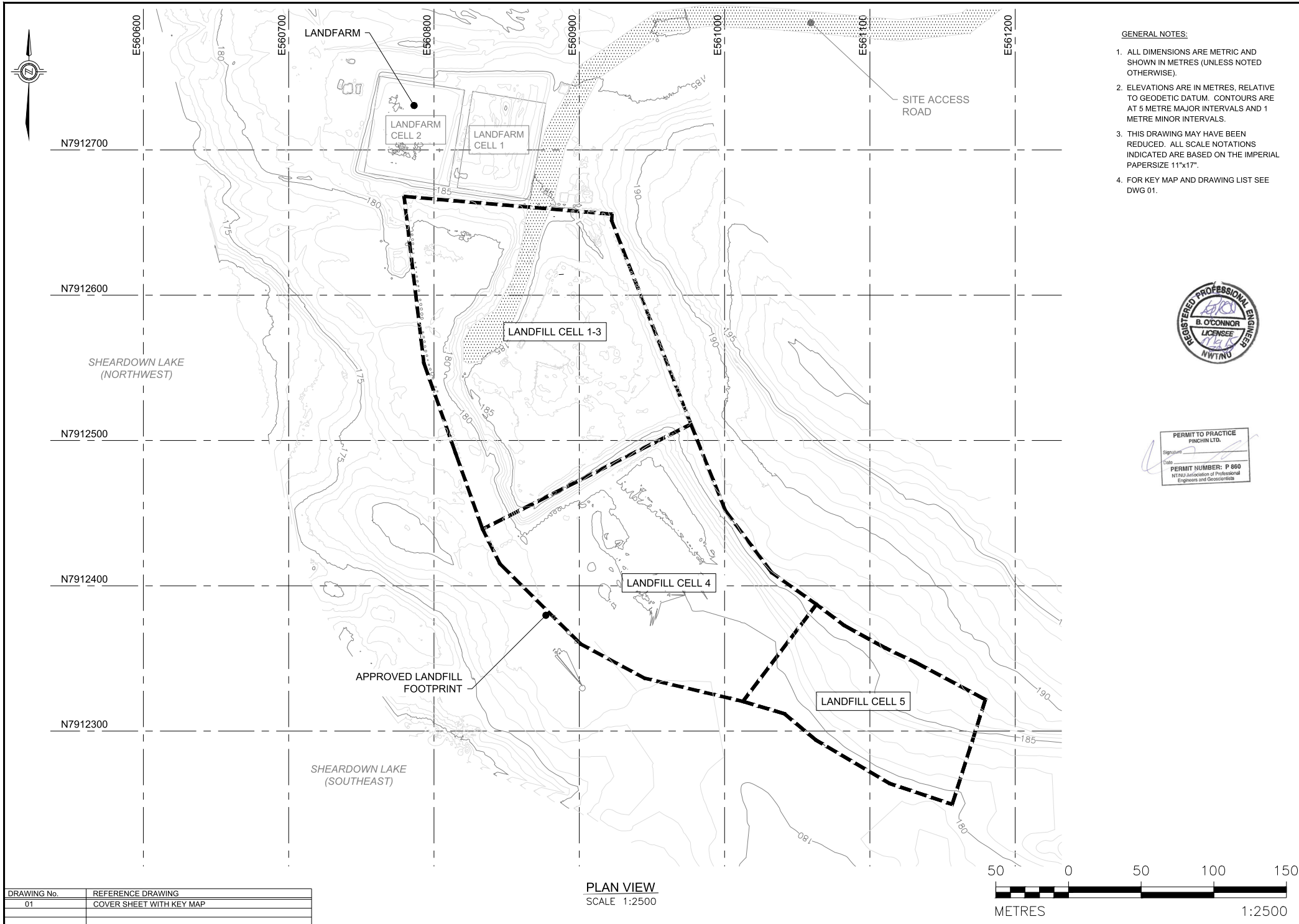
- 01 COVER SHEET AND KEY MAP
- 02 2026 TOPOGRAPHIC SURVEY
- 03 DESIGN FEATURES TOP OF WASTE, PLAN VIEW
- 04 DESIGN FEATURES TOP OF COVER, PLAN VIEW
- 05 DESIGN FEATURES SECTIONS
- 06 PRELIMINARY REGRADING PLAN AND SECTIONS
- 07 TYPICAL LANDFILL DETAILS 1
- 08 TYPICAL LANDFILL DETAILS 2
- 09 CONSTRUCTION NOTES



KEY MAP:



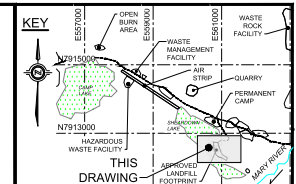
NO.	REVISIONS	DATE YY.MM.DD	DRWN. BY	CHKD. BY
0	ISSUED FOR CONSTRUCTION	26.05.15	DRR	AV/TM/BO
DRAWN BY: D. REAUME				
CHECKED BY: A. VALLE/B. O'CONNOR				
DRAWING: 01				
		SCALE: NTS		
		DATE: 2026.05.15		



- GENERAL NOTES:**
1. ALL DIMENSIONS ARE METRIC AND SHOWN IN METRES (UNLESS NOTED OTHERWISE).
  2. ELEVATIONS ARE IN METRES, RELATIVE TO GEODETIC DATUM. CONTOURS ARE AT 5 METRE MAJOR INTERVALS AND 1 METRE MINOR INTERVALS.
  3. THIS DRAWING MAY HAVE BEEN REDUCED. ALL SCALE NOTATIONS INDICATED ARE BASED ON THE IMPERIAL PAPER SIZE 11"x17".
  4. FOR KEY MAP AND DRAWING LIST SEE DWG 01.



PERMIT TO PRACTICE  
PINCHIN LTD.  
Signature: [Signature]  
Date: [Date]  
PERMIT NUMBER: P 860  
NWTNG Association of Professional Engineers and Geoscientists



- LEGEND**
- EXISTING
  - MAJOR CONTOUR (5m)
  - MINOR CONTOUR (1m)
  - 2012 FEIS/TYPE A WATER LICENSE LANDFILL LIMIT
  - SITE GRAVEL ROADS

**TOPOGRAPHICAL NOTE**  
TOPOGRAPHICAL INFORMATION SUPPLIED BY BAFFINLAND, COLLECTED 2026.

**DISCLAIMER**  
PROPRIETARY INFORMATION MAY NOT BE REPRODUCED OR DIVULGED WITHOUT PRIOR WRITTEN CONSENT OF PINCHIN LTD.

REV.	DESC.	YY.MM.DD	BY
0	ISSUED FOR CONSTRUCTION	26.05.15	DRR



PROJECT NAME:  
**DETAILED DESIGN PLAN**

CLIENT NAME:  
**Baffinland**

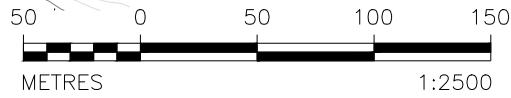
PROJECT LOCATION:  
MARY RIVER LANDFILL  
MARY RIVER, NUNAVUT

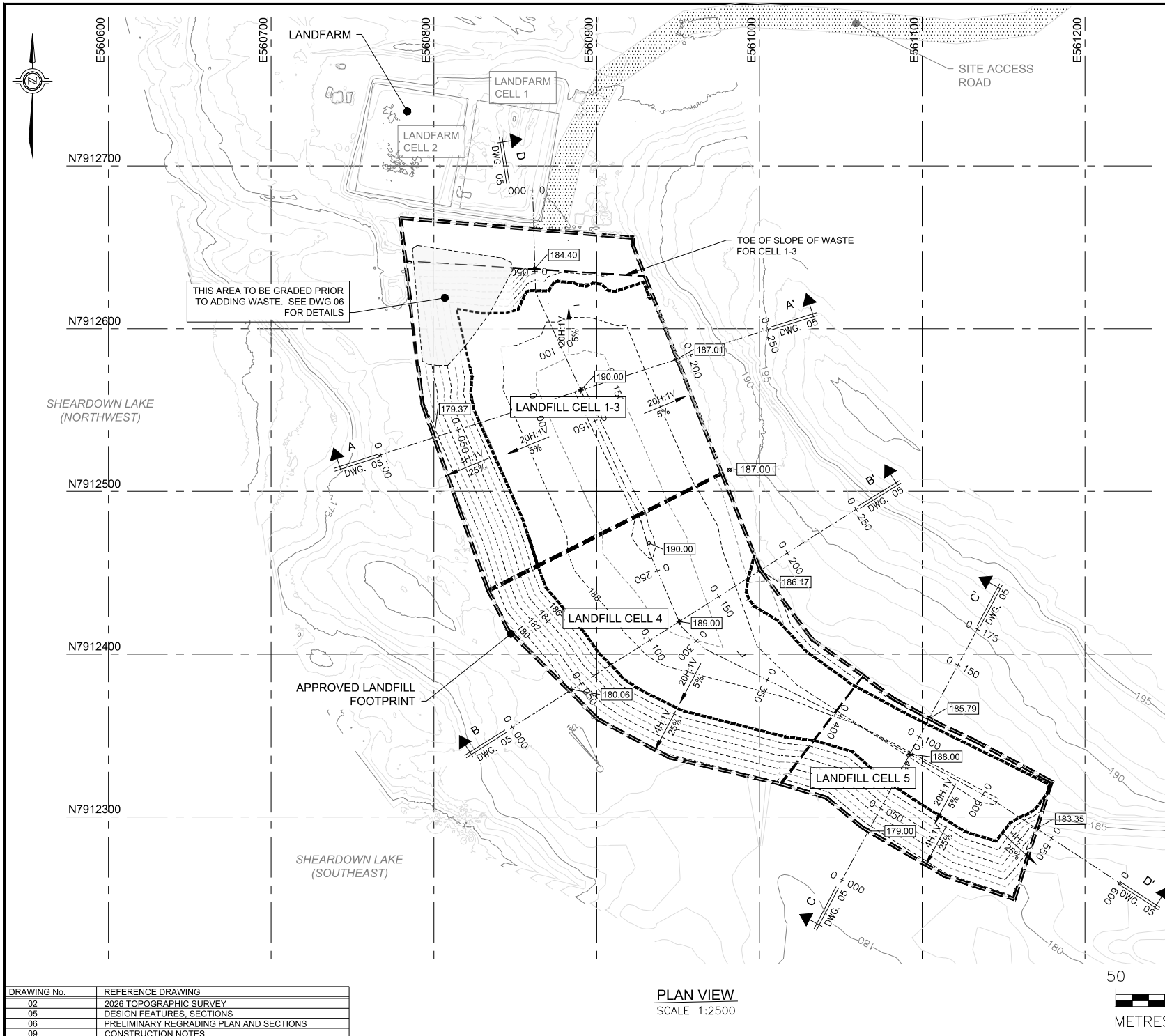
FIGURE NAME:  
2026 TOPOGRAPHIC SURVEY

PROJECT NUMBER: 353700.001	SCALE: 1:2500
DRAWN BY: D.R.R	REVIEWED BY: A.V.
DATE: 2026.05.15	FIGURE NUMBER: 02
	REV: 0

DRAWING No.	REFERENCE DRAWING
01	COVER SHEET WITH KEY MAP

**PLAN VIEW**  
SCALE 1:2500





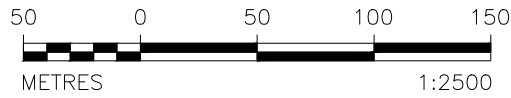
- NOTES:
- FOR GENERAL NOTES SEE DWG. 02.
  - FOR CONSTRUCTION NOTES SEE DWG. 09.



PERMIT TO PRACTICE  
PINCHIN LTD.  
Signature: [Signature]  
Date: [Date]  
PERMIT NUMBER: P 860  
NTRU Association of Professional Engineers and Geoscientists

NOTE:  
CONTOUR 187m  
REPRESENTING SIDE  
SLOPE GRADE CHANGE  
FROM 5% TO 25%

TOPOGRAPHICAL NOTE  
TOPOGRAPHICAL INFORMATION SUPPLIED  
BY BAFFINLAND, COLLECTED 2026.



LEGEND

<b>EXISTING</b>	
	MAJOR CONTOUR (5m)
	MINOR CONTOUR (1m)
	2012 FEIS/TYPER A WATER LICENSE LANDFILL LIMIT
	SITE GRAVEL ROADS
	EXISTING GRADE SPOT ELEV. (m)
<b>PROPOSED</b>	
	MAJOR CONTOUR (1m)
	FINISHED GRADE SLOPE
	DESIGN FINISHED GRADE SPOT ELEV. (m)

DISCLAIMER  
PROPRIETARY INFORMATION MAY NOT BE  
REPRODUCED OR DIVULGED WITHOUT PRIOR  
WRITTEN CONSENT OF PINCHIN LTD.

0	ISSUED FOR CONSTRUCTION	26.05.15	DRR
REV.	DESC.	YY.MM.DD	BY



PROJECT NAME:  
**DETAILED DESIGN PLAN**

CLIENT NAME:  
**Baffinland**

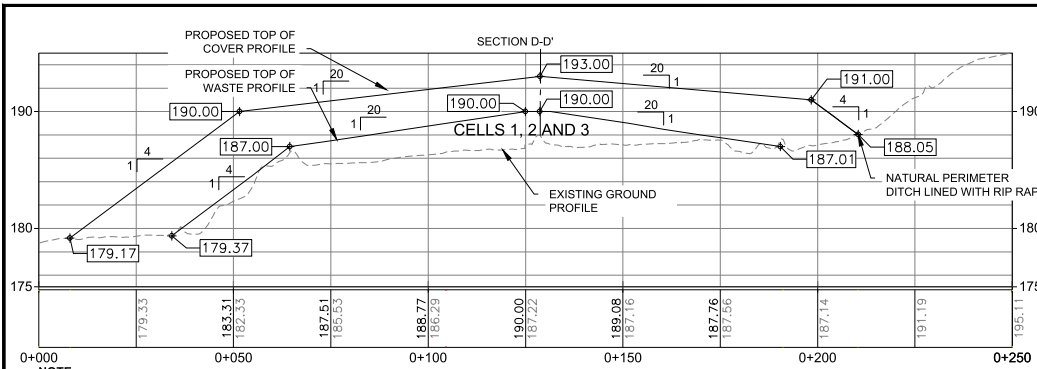
PROJECT LOCATION:  
MARY RIVER LANDFILL  
MARY RIVER, NUNAVUT

FIGURE NAME:  
**DESIGN FEATURES  
TOP OF WASTE  
PLAN VIEW**

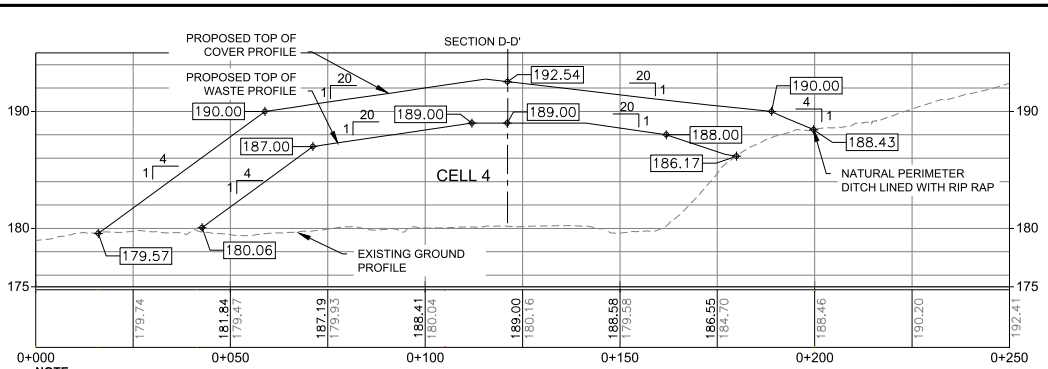
PROJECT NUMBER: 353700.001	SCALE: 1:2500
DRAWN BY: D.R.R	REVIEWED BY: A.V.
DATE: 2026.05.15	FIGURE NUMBER: 03
	REV: 0

DRAWING No.	REFERENCE DRAWING
02	2026 TOPOGRAPHIC SURVEY
05	DESIGN FEATURES, SECTIONS
06	PRELIMINARY REGRADING PLAN AND SECTIONS
09	CONSTRUCTION NOTES

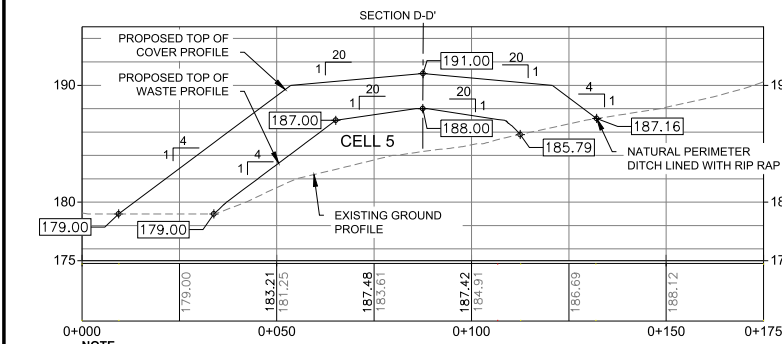
PLAN VIEW  
SCALE 1:2500



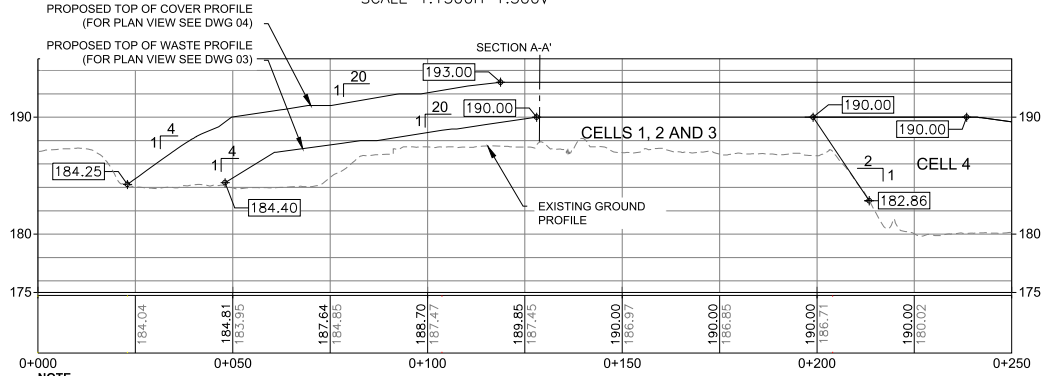
SECTION A-A' (CELLS 1, 2 AND 3)  
SCALE 1:1500H 1:500V



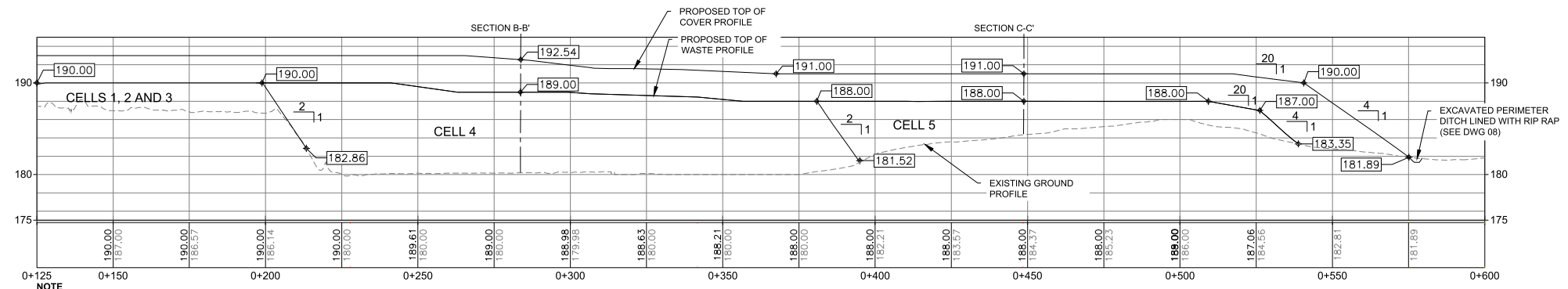
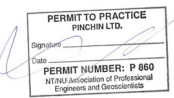
SECTION B-B' (CELL 4)  
SCALE 1:1500H 1:500V



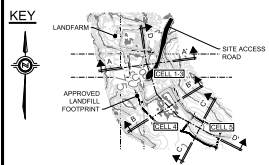
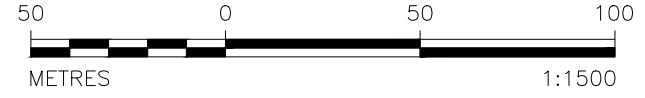
SECTION C-C' (CELL 5)  
SCALE 1:1500H 1:500V



SECTION D-D' (CELLS 1, 2 AND 3)  
SCALE 1:1500H 1:500V



SECTION D-D' (CELLS 4 AND 5)  
SCALE 1:1500H 1:500V



- LEGEND**
- - - - - EXISTING GROUND PROFILE
  - PROPOSED TOP OF WASTE/COVER PROFILE
  - PROPOSED LIMIT OF CELL
  - 298.00 DESIGN FINISHED GRADE ELEV.(m)

**DISCLAIMER**  
PROPRIETARY INFORMATION MAY NOT BE REPRODUCED OR DIVULGED WITHOUT PRIOR WRITTEN CONSENT OF PINCHIN LTD.

0	ISSUED FOR CONSTRUCTION	26.05.15	DRR
REV.	DESC.	YY.MM.DD	BY



PROJECT NAME:  
**DETAILED DESIGN PLAN**

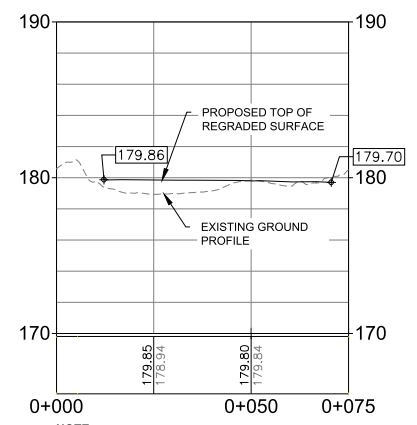
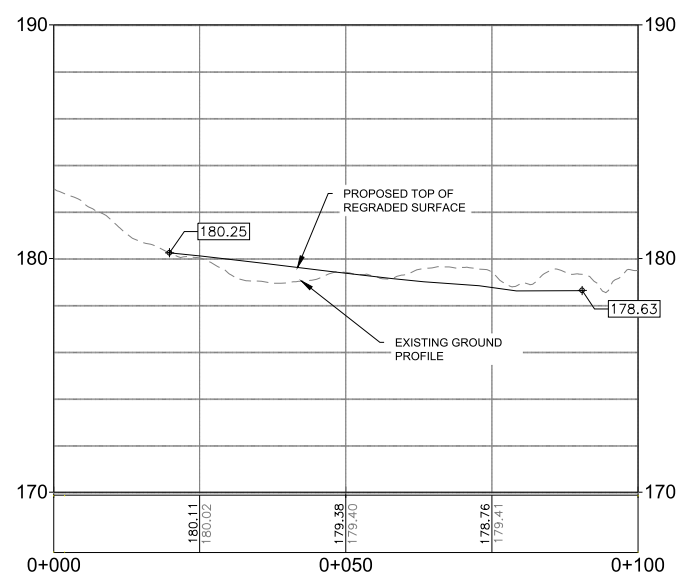
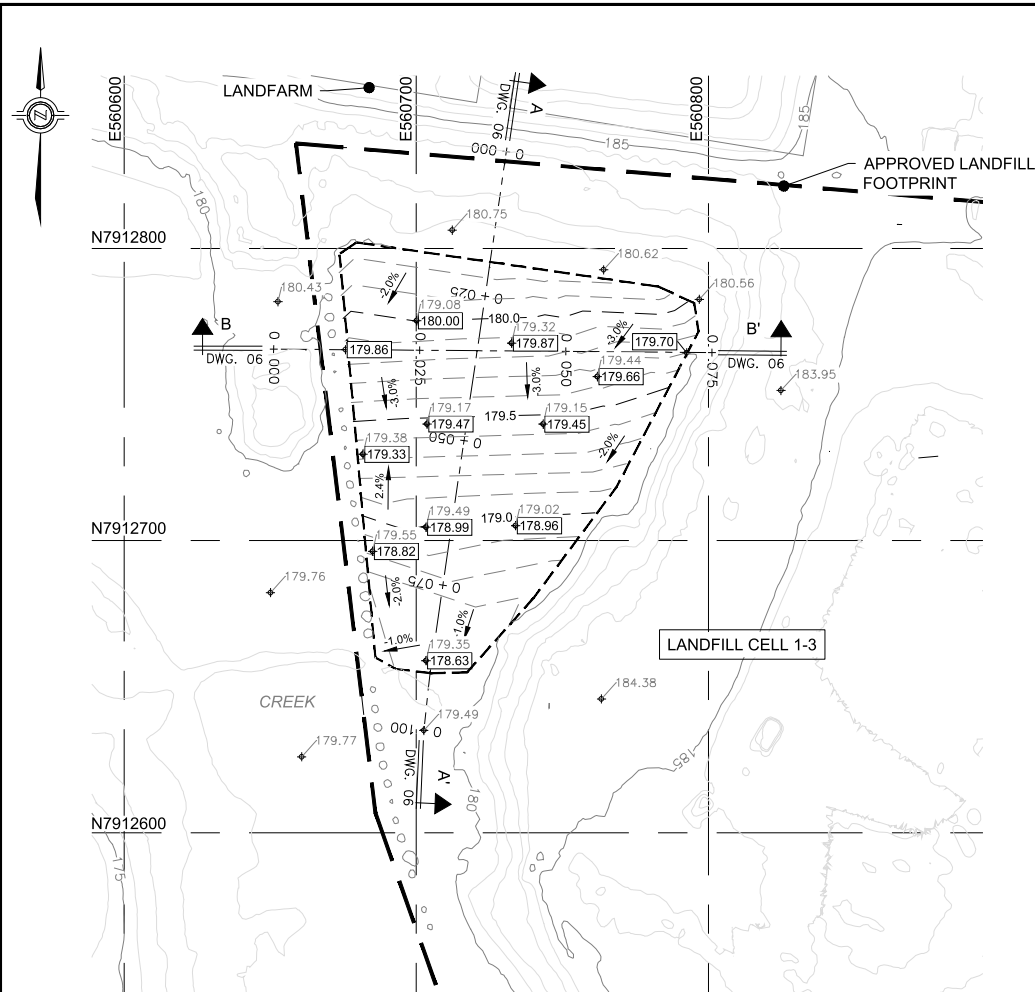


PROJECT LOCATION:  
**MARY RIVER LANDFILL  
MARY RIVER, NUNAVUT**

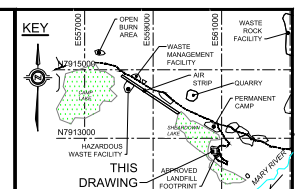
FIGURE NAME:  
**DESIGN FEATURES SECTIONS**

PROJECT NUMBER: <b>353700.001</b>	SCALE: <b>1:1500</b>
DRAWN BY: <b>D.R.R</b>	REVIEWED BY: <b>A.V.</b>
DATE: <b>2026.05.15</b>	FIGURE NUMBER: <b>05</b> REV. <b>0</b>

DRAWING No.	REFERENCE DRAWING
03	DESIGN FEATURES, TOP OF WASTE, PLAN VIEW
04	DESIGN FEATURES, TOP OF COVER, PLAN VIEW
08	TYPICAL LANDFILL DETAILS 2



- NOTES:**
1. FOR GENERAL NOTES SEE DWG 02.
  2. FOR CONSTRUCTION NOTES SEE DWG 09.



**LEGEND**

**EXISTING**

- 290 MAJOR CONTOUR (5m)
- MINOR CONTOUR (1m)
- 2012 FEIS/TYPER A WATER LICENSE LANDFILL LIMIT
- SITE GRAVEL ROADS
- 298.00 EXISTING GRADE SPOT ELEV.(m)

**PROPOSED**

- 180.0 MAJOR CONTOUR (0.5m)
- MINOR CONTOUR (0.1m)
- 2H:1V FINISHED GRADE SLOPE
- 50%
- 282.00 DESIGN FINISHED GRADE SPOT ELEV.(m)

**TOPOGRAPHICAL NOTE**  
TOPOGRAPHICAL INFORMATION SUPPLIED BY BAFFINLAND, COLLECTED 2026.

**DISCLAIMER**  
PROPRIETARY INFORMATION MAY NOT BE REPRODUCED OR DIVULGED WITHOUT PRIOR WRITTEN CONSENT OF PINCHIN LTD.

0	ISSUED FOR CONSTRUCTION	26.05.15	DRR
REV.	DESC.	YY.MM.DD	BY



PROJECT NAME:  
**DETAILED DESIGN PLAN**

CLIENT NAME:  
**Baffinland**

PROJECT LOCATION:  
**MARY RIVER LANDFILL  
MARY RIVER, NUNAVUT**

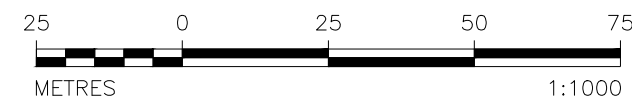
FIGURE NAME:  
**PRELIMINARY REGRADING  
PLAN AND SECTIONS**

PROJECT NUMBER: 353700.001	SCALE: 1:1000
DRAWN BY: D.R.R	REVIEWED BY: A.V.
DATE: 2026.05.15	FIGURE NUMBER: 06
	REV: 0



PERMIT TO PRACTICE  
PINCHIN LTD.  
Signature: \_\_\_\_\_  
Date: \_\_\_\_\_  
PERMIT NUMBER: P 880  
NWTNS Association of Professional  
Engineers and Geoscientists

DRAWING No.	REFERENCE DRAWING
02	2026 TOPOGRAPHIC SURVEY
09	CONSTRUCTION NOTES



- NOTES:**
1. FOR GENERAL NOTES SEE DWG 02.
  2. FOR CONSTRUCTION NOTES SEE DWG 09.



**LEGEND**

**DISCLAIMER**  
 PROPRIETARY INFORMATION MAY NOT BE REPRODUCED OR DIVULGED WITHOUT PRIOR WRITTEN CONSENT OF PINCHIN LTD.

REV.	DESC.	YY.MM.DD	BY
0	ISSUED FOR CONSTRUCTION	26.05.15	DRR



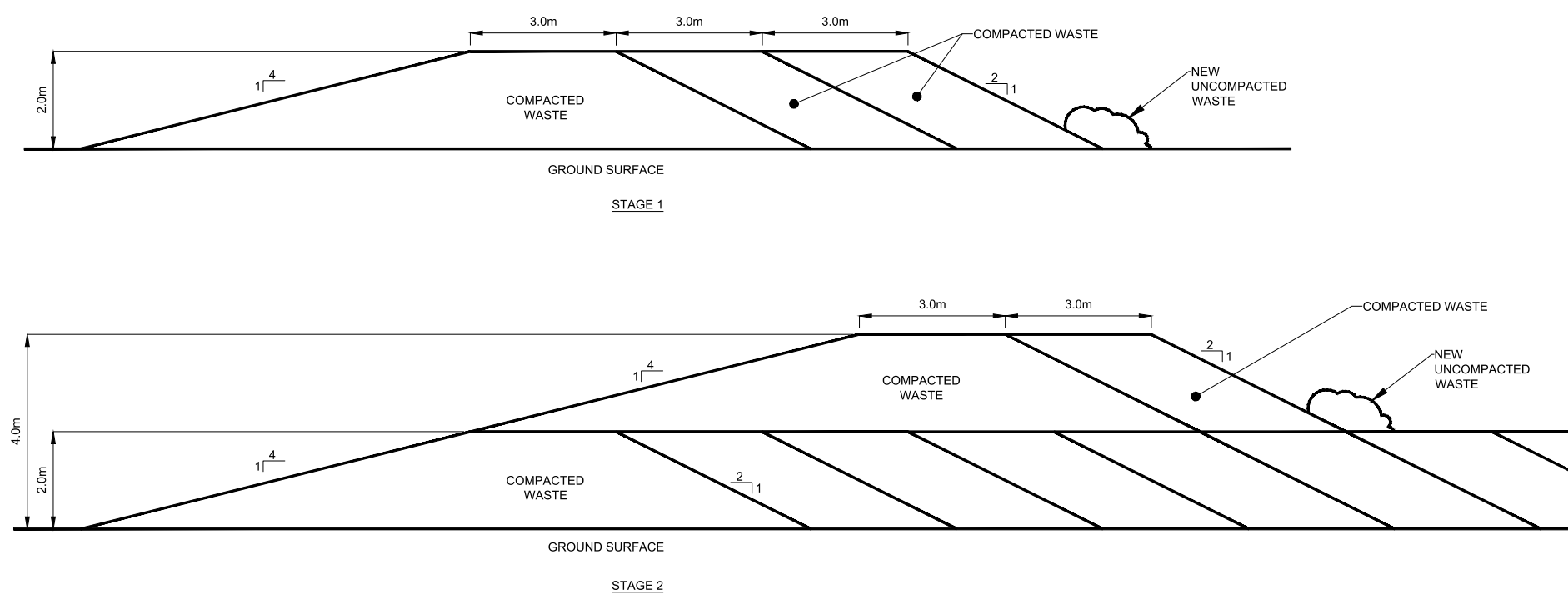
PROJECT NAME:  
**DETAILED DESIGN PLAN**



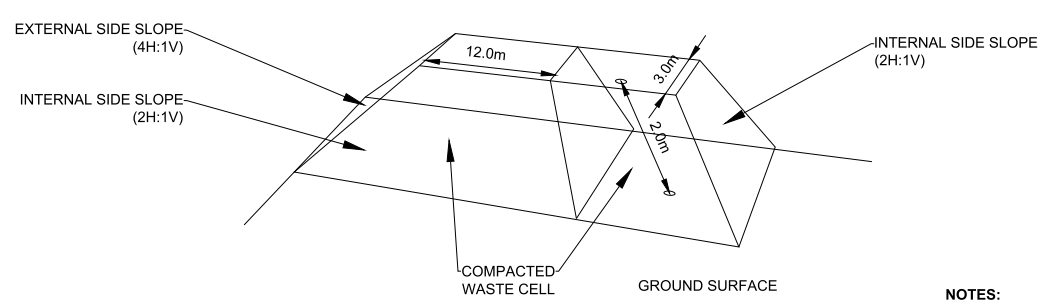
PROJECT LOCATION:  
**MARY RIVER LANDFILL  
 MARY RIVER, NUNAVUT**

FIGURE NAME:  
**TYPICAL LANDFILL  
 DETAILS 1**

PROJECT NUMBER: 353700.001	SCALE: NTS
DRAWN BY: D.R.R	REVIEWED BY: A.V.
DATE: 2026.05.15	FIGURE NUMBER: 07
	REV: 0



**DETAIL (07A) - AREA FILL EXAMPLE - TYPICAL SIDE PROFILES**  
 SCALE NTS



**DETAIL (07B) - AREA FILL EXAMPLE - 3D DIMENSIONAL PROFILE**  
 SCALE NTS

- NOTES:**
1. EXPOSED SIDES OF WASTE CELLS TO BE SLOPED 2 UNITS HORIZONTAL TO 1 UNIT VERTICAL FOR SAFETY.
  2. EXTERIOR SIDES OF WASTE CELLS TO BE SLOPED 4 UNITS HORIZONTAL TO 1 UNIT VERTICAL.



DRAWING No.	REFERENCE DRAWING
02	2026 TOPOGRAPHIC SURVEY
09	CONSTRUCTION NOTES

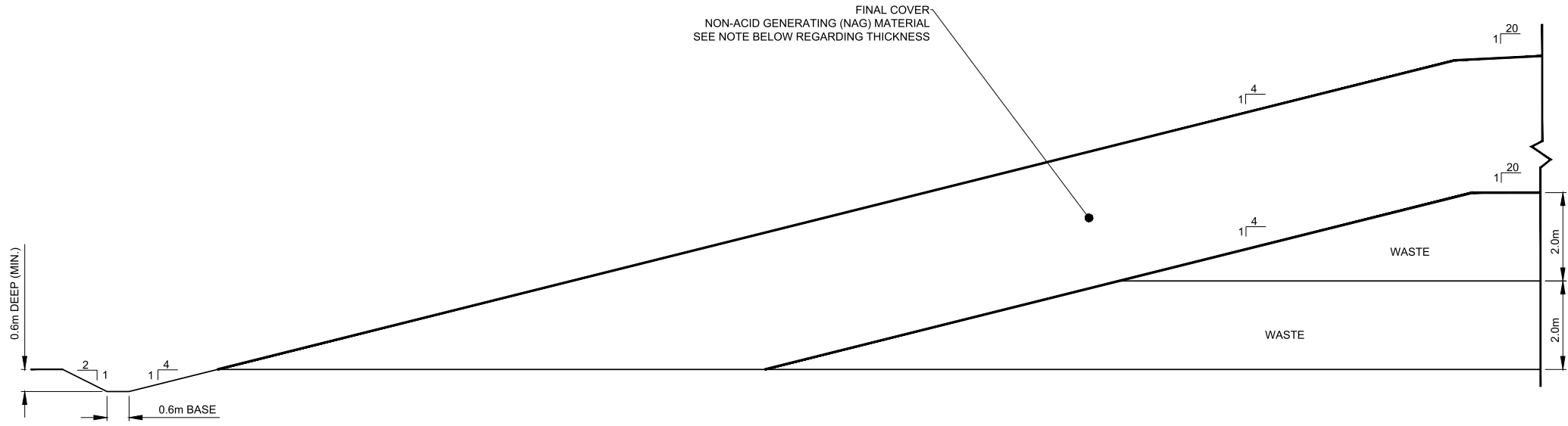
**NOTES:**

1. FOR GENERAL NOTES SEE DWG 02.
2. FOR CONSTRUCTION NOTES SEE DWG 09.

**KEY**



**LEGEND**



**NOTE:**  
BASED ON AVAILABLE DATA, A 3.0m THICK FINAL COVER IS REQUIRED.

**DISCLAIMER**  
PROPRIETARY INFORMATION MAY NOT BE REPRODUCED OR DIVULGED WITHOUT PRIOR WRITTEN CONSENT OF PINCHIN LTD.

REV.	DESC.	YY.MM.DD	BY
0	ISSUED FOR CONSTRUCTION	26.05.15	DRR

**DETAIL 08 - FINAL COVER AND PERIMETER DITCHING**  
SCALE: NTS



PROJECT NAME:  
**DETAILED DESIGN PLAN**

CLIENT NAME:  
**Baffinland**

PROJECT LOCATION:  
**MARY RIVER LANDFILL  
MARY RIVER, NUNAVUT**

FIGURE NAME:  
**TYPICAL LANDFILL  
DETAILS 2**

PROJECT NUMBER: <b>353700.001</b>	SCALE: <b>NTS</b>
DRAWN BY: <b>D.R.R</b>	REVIEWED BY: <b>A.V.</b>
DATE: <b>2026.05.15</b>	FIGURE NUMBER: <b>08</b> REV: <b>0</b>

DRAWING No.	REFERENCE DRAWING
02	2026 TOPOGRAPHIC SURVEY
09	CONSTRUCTION NOTES

**SITE DEVELOPMENT NOTES:**

**BASE PREPARATION**

1. SUBGRADE PREPARATION WILL BE REQUIRED FOR THE NATIVE GROUND SURFACE UNDERLYING THE FUTURE WASTE DEPOSITION AREAS (I.E., CELL 3, CELL 4 AND CELL 5) PRIOR TO WASTE PLACEMENT.
2. THE BASE SHALL BE GRADED TO ACHIEVE A SLOPE OF 200 UNITS HORIZONTAL TO 1 UNIT VERTICAL (200:1 OR 0.5%) FOR THE PURPOSE OF FACILITATING ADEQUATE SURFACE DRAINAGE DURING WASTE DEPOSITION ACTIVITIES.
3. DISTURBANCE OF THE ORIGINAL GROUND SURFACE (I.E., EXCAVATION, SCARIFICATION) SHOULD BE MINIMIZED DURING SUBGRADE PREPARATION IN ORDER TO AVOID SIGNIFICANT IMPACTS TO THE EXISTING PERMAFROST CONDITIONS.
4. BASE PREPARATION MAY INCLUDE EXCAVATING (CUTTING), LOADING, HAULING AND UNLOADING OF CUT/FILL MATERIALS TO AREAS WHERE FILLING IS REQUIRED, SPREADING AND COMPACTING MATERIALS IN FILL AREAS, AS WELL AS FINE GRADING AND MAINTENANCE OF GRADED SURFACES.
5. EXCESS CUT MATERIALS MAY BE STOCKPILED FOR FUTURE USE AS LANDFILL OPERATIONAL COVER MATERIAL OR RELOCATED AS DIRECTED BY THE SITE TECHNICAL SERVICES SUPERINTENDENT.
6. ADDITIONAL FILL MATERIAL MAY CONSIST OF UNFROZEN GRANULARS IF NEEDED, SHOULD THE VOLUME OF CUT MATERIALS BE INSUFFICIENT.
7. COMPACT THE PREPARED BASE SURFACE BY TRACK PACKING WITH BULLDOZER.
8. THE BASE GRADES AND ELEVATIONS FOR CELL 3 ARE PROVIDED ON DRAWING 06.

**WASTE DEPOSITION**

(REFER TO THE DESIGN & OPERATIONS PLAN FOR ADDITIONAL DETAILS)

9. THE TOP OF WASTE GRADES AND ELEVATIONS ARE PROVIDED ON DRAWING 03.
10. WASTE DEPOSITION IS TO OCCUR WITHIN THE APPROVED WASTE DISPOSAL AREA BOUNDARY.
11. THE APPROVED WASTE DEPOSITION AREA HAS BEEN BROKEN DOWN INTO THREE (3) CELLS: CELL 1-3, CELL 4 AND CELL 5. WASTE DEPOSITION IS TO OCCUR WITHIN ONE CELL AT A TIME. WHEN A CELL HAS REACHED ITS FINAL TOP OF WASTE ELEVATIONS, FINAL COVER IS TO BE INSTALLED OVER THE FILLED CELL AND WASTE DEPOSITION MAY BE INITIATED IN THE NEXT CELL.
12. THE METHOD OF WASTE DEPOSITION FOLLOWS AN ABOVE-GRADE, AREA FILL METHOD WHERE WASTE IS PLACED ON THE PREPARED BASE SURFACE IN SEVERAL SMALL BENCHES OF APPROXIMATELY 3 M WIDTH, 12 M LENGTH AND

- 2 M HEIGHT. WHEN THE BENCH REACHES THESE DIMENSIONS, THE NEXT BENCH MAY BE STARTED. THE TEMPORARY SLOPES OF THE WORKING BENCH SHOULD BE 2:1 FOR EQUIPMENT OPERATORS' SAFETY. A TYPICAL DETAIL ILLUSTRATING THE WASTE PLACEMENT METHOD IS PROVIDED ON DRAWING 07.
13. THE PROGRESSION OF THE BENCHES WILL BE AT THE DISCRETION OF THE LANDFILL OPERATORS. HOWEVER, AN ATTEMPT SHOULD BE MADE TO ACHIEVE THE FINAL TOP OF WASTE GRADES AND ELEVATIONS ALONG THE PERIMETER OF THE CELL AND WORK INWARDS IN ORDER TO PROVIDE OPPORTUNITIES FOR THE PROGRESSIVE APPLICATION OF FINAL COVER AS SOON AS POSSIBLE.
14. WASTE SHOULD BE COMPACTED BY DRIVING A BULLDOZER, AN EXCAVATOR, OR OTHER PIECE OF HEAVY EQUIPMENT DIRECTLY OVER THE TOP OF THE WORKING FACE THREE TO FIVE TIMES. THE COMPACTING EQUIPMENT SHALL BE OPERATED AT SUCH A SPEED AS TO PREVENT PICK-UP, BUT IN NO CASE SHALL THE SPEED OF THE COMPACTING EQUIPMENT EXCEED 10 KILOMETRES PER HOUR (KM/H). WASTE SHOULD BE COMPACTED AS NEEDED. WHEN LIFTS REACH 0.3 M TO 0.6 M THICKNESS. A SLOPE OF AT LEAST 2H:1V ON WORKING FACES MUST BE MAINTAINED FOR EQUIPMENT OPERATORS' SAFETY. APPLYING WASTE IN LAYERS THICKER THAN 0.6 M WILL RESULT IN POOR COMPACTION AND INEFFICIENT WASTE VOLUME CONSUMPTION. NUCLEAR GAUGE COMPACTION TESTING OF THE WASTE MATERIAL IS NOT REQUIRED FOR THE TOP OF WASTE SURFACE.

**FINAL COVER INSTALLATION**

15. THE TOP OF FINAL COVER GRADES AND ELEVATIONS ARE PROVIDED ON DRAWING 04.
16. THE FINAL COVER MATERIAL SHALL BE PLACED DIRECTLY OVER THE FINAL TOP OF WASTE SURFACE WITH A MINIMUM THICKNESS OF 3 M.
17. THE FINAL COVER MATERIAL SHALL CONSIST OF NON-ACID-GENERATING (NAG) MATERIAL.
18. THE NAG MATERIAL SHALL BE TESTED PRIOR TO PLACEMENT TO ENSURE IT MEETS THE REQUIREMENTS TO BE DESIGNATED AS SUITABLE NAG MATERIAL IN ACCORDANCE WITH THE MINE ENVIRONMENT NEUTRAL DRAINAGE (MEND) PROGRAM REPORT 1.20.1 'PREDICTION MANUAL FOR DRAINAGE CHEMISTRY FROM SULPHIDIC GEOLOGIC MATERIALS', DATED DECEMBER 2009.
19. A TYPICAL DETAIL OF THE FINAL COVER SYSTEM IS ILLUSTRATED ON DRAWING 08.
20. FINAL COVER INSTALLATION MAY INCLUDE LOADING AND HAULING OF THE COVER MATERIAL, UNLOADING OF THE COVER MATERIAL IN THE REQUIRED PLACEMENT AREAS, SPREADING AND COMPACTING OF THE COVER MATERIAL, AS WELL AS FINE GRADING AND MAINTENANCE OF GRADED SURFACES.
21. THE COVER MATERIAL SHALL BE PLACED DIRECTLY OVER THE WASTE AND OPERATIONAL

- COVER IN CONTINUOUS, UNIFORM LIFTS NOT EXCEEDING 0.3 M IN THICKNESS.
22. IMMEDIATELY AFTER SPREADING, THE MATERIAL SHALL BE ROLLED WITH A MINIMUM OF THREE PASSES. ROLLING SHALL BE CARRIED OUT OVER LARGE SURFACES AND TURNS SHALL BE CAREFULLY EXECUTED TO OBTAIN UNIFORM COMPACTION. SUCCESSIVE PASSES SHALL OVERLAP THE PREVIOUS PASS BY AT LEAST 0.6 M.
23. COMPACTION IS TO BE AS UNIFORM AS PRACTICABLE OVER THE ENTIRE LIFT SURFACE IN ORDER TO PREVENT DIFFERENTIAL SETTLEMENT OR DEFORMATION OF THE FINAL SURFACE. THE SURFACE OF THE FINAL COVER MATERIAL SHOULD BE FINE GRADED AND SMOOTH ROLLED TO ELIMINATE DEPRESSIONS, BUMPS AND ABRUPT ELEVATION CHANGES.
24. COMPACT THE FINAL COVER LAYER TO A MINIMUM OF 85 % OF THE STANDARD PROCTOR DENSITY (SPD). NUCLEAR GAUGE COMPACTION TESTING OF THE FINAL COVER SURFACE IS NOT REQUIRED.

**PERIMETER DITCHING**

25. PERIMETER DITCHING SHOULD BE IMPLEMENTED AT THE TIME OF THE FINAL COVER INSTALLATION ON THE ADJACENT LANDFILL SIDE SLOPES TO CAPTURE AND CONVEY SURFACE WATER RUNOFF TOWARDS SHEARDOWN LAKE.
26. PERIMETER DITCHING WILL BE REQUIRED AROUND THE NORTH, EAST AND SOUTH SIDES OF THE CAPPED LANDFILL AREA. THE DITCHING TO THE NORTH WILL ALSO EXTEND AROUND THE EXISTING SOIL LANDFARM AREA. THE APPROXIMATE LOCATION AND SEVERAL SPOT ELEVATIONS ALONG THE BASE OF THE PERIMETER DITCHING ARE PROVIDED ON DRAWING 04.
27. THE PERIMETER DITCHING SHOULD BE FIELD FIT TO BEST MATCH THE EXISTING TOPOGRAPHY SURROUNDING THE WASTE DISPOSAL AREA.
28. IT IS INTENDED THAT THE DITCHING ALONG THE EASTERN SIDE OF THE WASTE DISPOSAL AREA WILL BE CREATED USING THE SLOPE OF THE NATURAL TOPOGRAPHY AND SLOPE OF THE FINAL COVER LAYER.
29. THE DITCHING ALONG THE NORTHERN AND SOUTHERN SIDES OF THE WASTE DISPOSAL AREA WILL BE EXCAVATED INTO THE EXISTING GROUND SURFACE ADJACENT TO THE CAPPED LANDFILL SIDE SLOPES. THE EXCAVATED DITCHING SHALL HAVE A TRAPEZOIDAL SHAPE WITH A 0.6 M WIDE BASE AND MINIMUM 0.6 M DEPTH. THE SIDE SLOPE OF THE DITCH SHALL BE 4:1 ON THE LANDFILL SIDE AND 2:1 ON THE OUTER SIDE. A TYPICAL DETAIL OF THE EXCAVATED PERIMETER DITCH PROFILE IS PROVIDED ON DRAWING 08.
30. THE PERIMETER DITCHING SHALL BE LINED WITH RIP RAP MATERIAL TO PREVENT EROSION SCOURING.

**GENERAL**

31. STOCKPILES OF ANY WORKING MATERIALS SHALL BE PLACED IN LOCATIONS APPROVED BY THE SITE TECHNICAL SERVICES SUPERINTENDENT. STOCKPILE HEIGHT IS NOT TO EXCEED 2 M.
32. PROPER SEDIMENT AND EROSION CONTROL MEASURES (SUCH AS SILT FENCES, HAY BALES, ETC.) SHALL BE PLACED DURING CONSTRUCTION ACTIVITIES IF REQUIRED TO PROTECT THE CREEK AND SURFACE WATER BODIES TO THE WEST OF THE APPROVED WASTE DISPOSAL AREA.
33. TAKE ALL NECESSARY PRECAUTIONS TO KEEP THE DUST, DIRT AND NOISE TO AN ACCEPTABLE LEVEL BY MEANS OF PROTECTION OR REVISED OPERATIONS.
34. PROVIDE ALL SAFETY REQUIREMENTS AND PROTECTION NECESSARY OR AS REQUIRED BY LOCAL BY-LAWS, GOVERNING AUTHORITIES AND THE SITE TECHNICAL SERVICES SUPERINTENDENT.
35. TAKE ALL PRECAUTIONS AND PROVIDE ALL REQUIRED PROTECTION TO ENSURE THE SAFETY OF THE GENERAL PUBLIC AND THE WORKERS IN ACCORDANCE WITH THE LOCAL BY-LAWS, GOVERNING AUTHORITIES AND SITE SPECIFIC HEALTH AND SAFETY POLICIES.
36. TAKE CARE TO PROTECT AND MAINTAIN ANY EXISTING INFRASTRUCTURE (SUCH AS MONITORING WELLS, FENCING, ACCESS ROADS, ETC.) DURING THE CONSTRUCTION ACTIVITIES.

DRAWING No.	REFERENCE DRAWING
03	DESIGN FEATURES, TOP OF WASTE, PLAN VIEW
04	DESIGN FEATURES, TOP OF COVER, PLAN VIEW
06	PRELIMINARY REGRADING PLAN AND SECTIONS
07	TYPICAL LANDFILL DETAILS 1
08	TYPICAL LANDFILL DETAILS 2

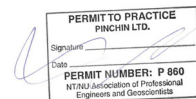
**KEY**



**LEGEND**

**DISCLAIMER**  
 PROPRIETARY INFORMATION MAY NOT BE REPRODUCED OR DIVULGED WITHOUT PRIOR WRITTEN CONSENT OF PINCHIN LTD.

REV.	DESC.	YY.MM.DD	BY
0	ISSUED FOR CONSTRUCTION	26.05.15	DRR



PROJECT NAME:  
**DETAILED DESIGN PLAN**

CLIENT NAME:

PROJECT LOCATION:  
 MARY RIVER LANDFILL  
 MARY RIVER, NUNAVUT

FIGURE NAME:  
**CONSTRUCTION NOTES**

PROJECT NUMBER: 353700.001	SCALE: NTS
DRAWN BY: D.R.R	REVIEWED BY: A.V.
DATE: 2026.05.15	FIGURE NUMBER: 09
	REV. 0