

Attachment 6b

Milne Port Truck Shop and Portable Water Treatment System

General Specifications

*The
Ultimate
mobile,
industrial
grade,
self-contained
multipurpose
structure.*



(Based on +/- 1200 sq.ft. model—applicable values for other sizes will vary accordingly)

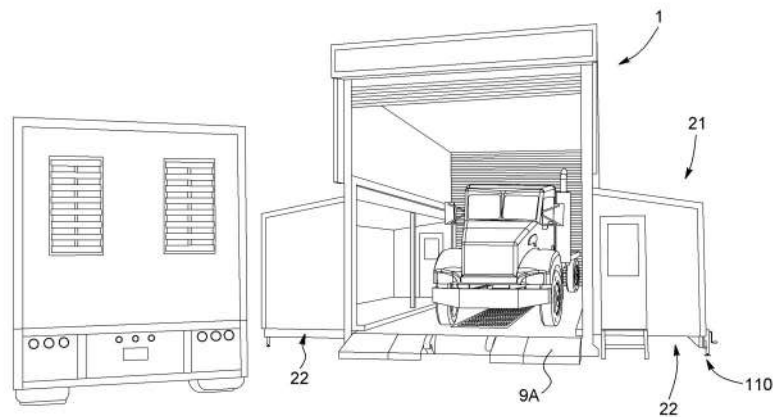
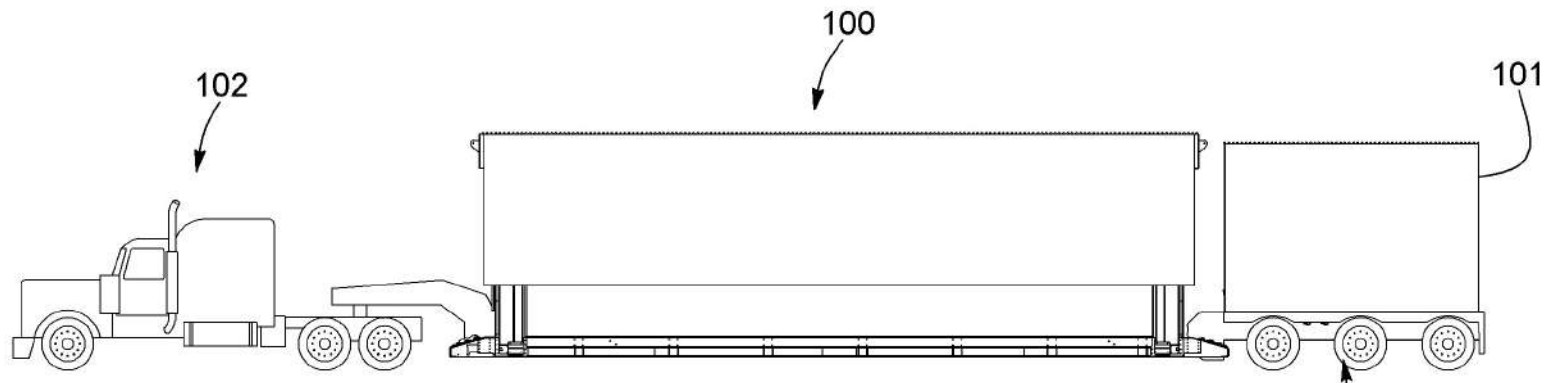


FIG. 6

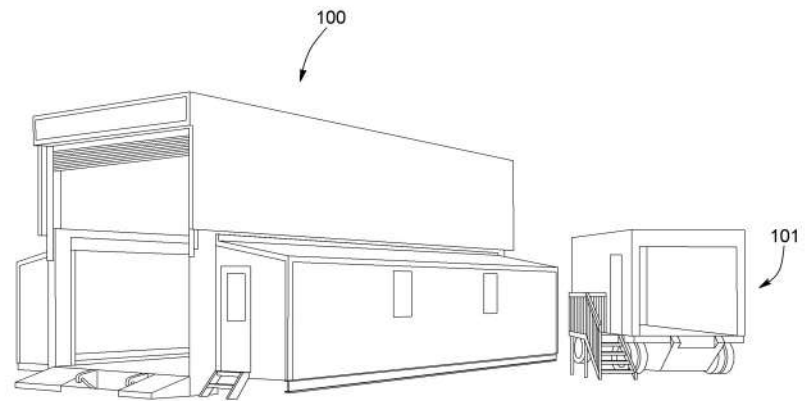


FIG. 7

patents: CA2712719A1, US20110120026

4115—18 Avenue North

Lethbridge AB T1H 5G1

403-257-8492

www.one4haul.com



1.0 general

Overall dimension closed

- 15' 10" Wide x 45' 4" Long x 13' 2" High

Overall dimension open

- 30' Wide x 45' 4" Long x 20' High

Structure Material

- Combination of Structural Aluminum & High Strength Steel

Insulation

- Walls, Ceiling & Floor equivalent to R-17.5

Weight

- 70,000 lbs

Snow load

- 35 lbs/sq. ft.

Exterior Color

- Antique Linen with Medium Green trim (Other color schemes available on request)

Interior Color

- Polar White

Access

- 2- Man Doors 32" x 80"
- 2- Bay Doors (Drive thru type) 14' Width x 16' High

Usable space

- Total of approximately 1200 Square Feet

Floor Capacity

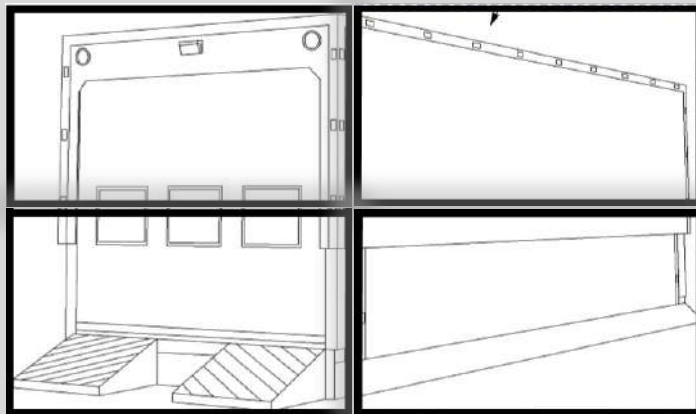
- 125,000 Lbs

Heating

- Capacity: 40 Kw

Certification

- CSA Special Inspection of Electrical Installation (SPE 1000)



patents: CA2712719A1, US20110120026

4115—18 Avenue North
Lethbridge AB T1H 5G1
403-257-8492



2.0 floor

Overall dimension

- 13' 10" Wide x 45' 4" Long

Usable space

- 530 Square Feet

Structure Material

- High Strength Steel

Color

- Yellow with Black Deck

Deck Material

- Wear Resistant Steel (QT 400 3/8 thick)

Paint

- Black Anti-Slip high resistant coating

Loading Ramps

- Integrated at each extremity

Insulation

- Insulation Type: Polyurethane foam insulation and air barrier
- R-Value: R-17.5

Capacity

- 125,000 lbs (1.55 P.S.I.)

Certification

* Electrical components comply to industrial standards & applicable building codes.

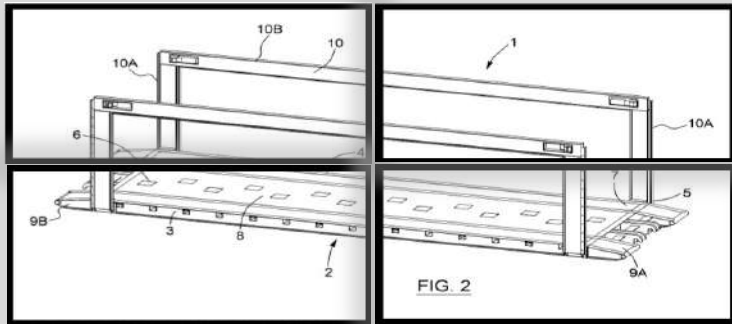
Transportation connection type:

- Deloupe effortless full hydraulic system

Waste Water Tank

- Capacity: 1500 Gallons U.S.
- Material: Steel
- Paint: High Resistant polyurethane coating (black)
- Reservoir Chemical resistance: Water, salt solutions (acidic, neutral or alkaline), petroleum product and solvents
- Connection Type: Camlock 3" Male
- Floor Drainage: steel grate

Waste Water Tank Heater



patents: CA2712719A1, US20110120026

4115—18 Avenue North
Lethbridge AB T1H 5G1
403-257-8492



3.0 roof

Overall dimension

- 15' 10" Wide x 40' Long

Roof Configuration

- Flat

Structure Material

- Structural Aluminum

Insulation

- Insulation Type: Polyurethane foam insulation and air barrier
- R-Value: R-17.5

Exterior Sheet Metal

- Steel .021" Colonial Antique Linen (Other color schemes available on request)

Interior Sheet Metal

- Steel .021" Colonial Polar White

Roof Sheet Metal

- Steel .021" Corrugated Galvanized

Certification

- Electrical components comply to NEMA 4 Requirements

Exterior Lighting

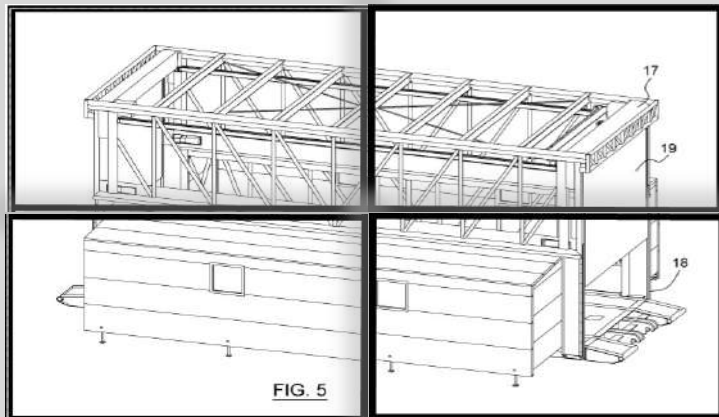
- 2 - 150 Watts High Pressure Sodium with Photocell

Interior Lighting

- 8 - 4' Light, vapor tight, (2 lamp T8)
- Approximate capacity of 73,600 Lumens

Bay Doors

- Model : Model 800C Rolling door
- Size: 14 x 16
- Opening: 14' Wide X 15' High
- Material: Steel 18 Gauge
- Insulation: R-Value = 6.7
- Cycle life: 25000
- Safety device: Fail safe electric safety edge
- Operation methods: Remote, Electrical & Manual
- Color: Grey



patents: CA2712719A1, US20110120026

4115—18 Avenue North
Lethbridge AB T1H 5G1
403-257-8492



4.0 right side pod

Overall dimension

- 6' Wide x 38' Long x 8' High

Roof Configuration

- 2/12 Pitch

Structure Material

- Structural Aluminum

Insulation

- Insulation Type: Polyurethane foam insulation and air barrier
- R-Value: R-17.5

Exterior Sheet Metal

- Steel .021" Colonial Antique Linen (Other color schemes available on request)

Interior Sheet Metal

- Steel .021" Colonial Polar White

Interior Lighting

- 4 - 4' Light, vapor tight, (2 lamp T8)
- Capacity of 27,600 Lumens

Emergency Light

- Type: Dual Head • Capacity: 36 Watts • Stand By Power: 12 Volts
- Duration: 30 Minutes

Man Doors

- Opening Direction: Inswing • Material: Steel 20 Ga • Size : 32" x 80"
- Window: Thermos Wire Mesh 6mm
- Hinges: Stainless Steel with Ball bearing • Fire Rated: 45 min
- Weather-strip Type: Commercial • Color: Medium Green

Optional Window(s) - confirm pricing and locations at time of order.

- Model: Simple Hung Century Series • Material: PVC
- Size : 24" wide x 36" high • Certification: CSA A3, B4, C4 & F2
- Color: White

Receptacles

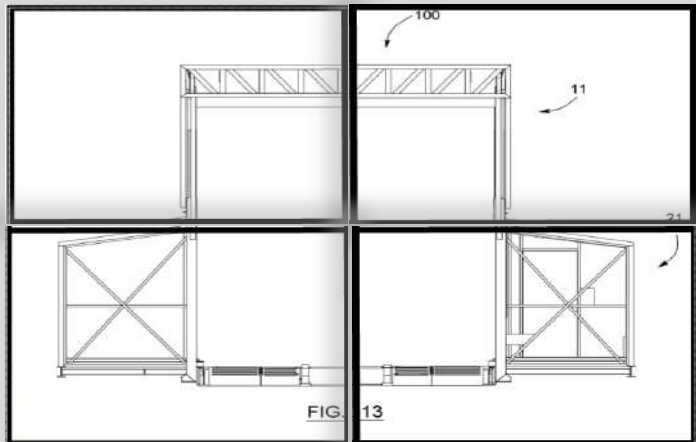
- 2 - 20 Amps GFCI

Heaters

- 2 - 10 Kw with integrated thermostat

Manual support jack

- 4 - mechanical adjustable jacks • Capacity: 2000 lbs ea

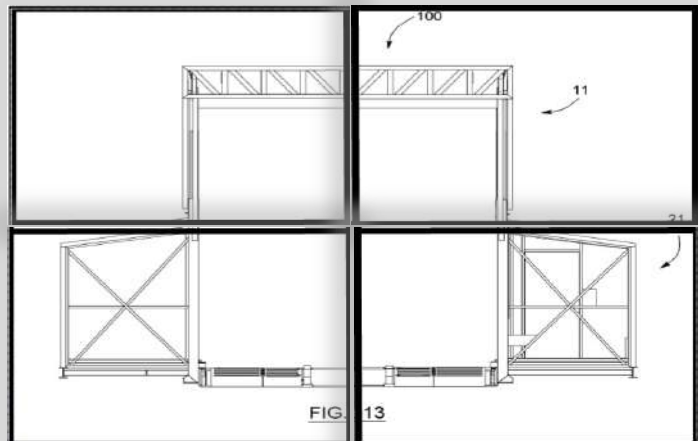


patents: CA2712719A1, US20110120026

4115—18 Avenue North
Lethbridge AB T1H 5G1
403-257-8492



5.0 left side pod



patents: CA2712719A1, US20110120026

4115—18 Avenue North
Lethbridge AB T1H 5G1
403-257-8492

Emergency Light

- Type: Dual Head
- Capacity: 36 Watts
- Stand By Power: 12 Volts
- Duration: 30 Minutes

Man Doors

- Opening Direction: Outswing
- Material: Steel 20 Ga
- Size : 32" x 80"
- Window: Thermos Wire Mesh 6mm
- Hinges: Stainless Steel with Ball bearing
- Fire Rated: 45 min
- Weather-strip Type: Commercial
- Color: Medium Green

Optional Window(s) - confirm pricing and locations at time of order.

- Model: Simple Hung Century Series
- Material: PVC
- Size : 24" wide x 36" high
- Certification: CSA A3, B4, C4 & F2
- Color: White
- Quantity: 2

Receptacles

- 2 - 20 Amps GFCI

Heaters

- 2 - 10 Kw with integrated thermostat

Manual support jack

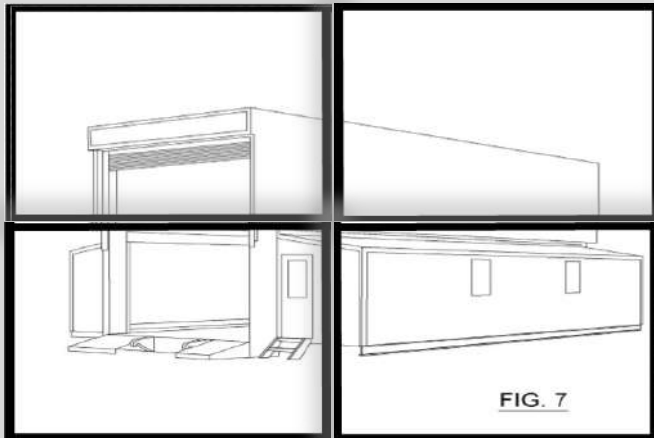
- 4 - mechanical adjustable jack
- Capacity: 2000 lbs ea

Access steps

- Material: Aluminum



6.0 electrical room



patents: CA2712719A1, US20110120026

4115—18 Avenue North
Lethbridge AB T1H 5G1
403-257-8492

Overall dimension

- 6' x 6'

Structure Material

- Structural Aluminum

Exterior Sheet Metal

- Steel .021 Model Colonial Polar White

Interior Sheet Metal

- Steel .021 Model Colonial Polar White

Interior Lighting

- 1 - 4' Light, vapor tight,(3 lampT8)
- Capacity of 9200 Lumens

Receptacles

- 1 - 15 Amps

Man Doors

- Opening Direction: Outswing
- Material: Steel 20 Ga
- Size : 32" x 80"
- Window: No window
- Hinges: Stainless Steel with Ball bearing
- Fire Rated: 90 min
- Weather-strip Type: Commercial
- Color: Polar White

Main Electrical Components

- 1 - Electrical Main Entrance
- 1 - Breaker Panel 200 Amp
- 1 - Transformer 40 Kva
- 3 - Disconnect 600 Volts
- Power Supply Cord: 50 Feet - 60 Amps

Certification

- CSA Special Inspection on Electrical Installation (SPE 1000)



7.0 options

patents: CA2712719A1, US20110120026

4115—18 Avenue North
Lethbridge AB T1H 5G1
403-257-8492

7.1. WASH BAY CONFIGURATION

- 2 - Emergency Lights (wash down)
- Type: Dual Head
- Capacity: 36 Watts
- Stand By Power: 12 Volts
- Autonomy: 30 Minutes
- Heater
- 4 - 7.5 Kw heaters (wash down) with integrated thermostat
- Curtains
- Plastic Stripping 12" Wide x .120" thick Clear (all around)
- Electrical components comply to NEMA 4 Requirements

7.2. OVERHEAD CRANE

- Capacity: 4 Tons
- Hoist lift height: 15 feet
- Travelling Speed
- Bridge speed: 80/20 feet per min
- Hoist speed: 16/4 feet per min
- Trolley speed: 47/16 feet per min

7.3 SAFETY PACKAGE

- 2 - Fire Extinguishers:
- 10 lbs Type ABC
- First Aid Kit
- Eye Wash Station



7.0 options (2)

patents: CA2712719A1, US20110120026

4115—18 Avenue North
Lethbridge AB T1H 5G1
403-257-8492

7.4 CURTAINS (BAY DOORS)

- Plastic Stripping 12" Wide x .120" thick Clear
- In front of both bay doors only

7.5 WORK BENCH

- Size: 18" Wide x 96" Long x 30" High
- Material: Aluminum

7.6 4 POST HYDRAULIC LIFT

- 30,000 lbs total capacity
- Maximum lifting height 68 1/2"
- Inside column total width: 11'
- Usable length: 20'

7.7 SIDE POD SKIRTING

- Wind and weather insulation
- Covers both side pods exterior surroundings
- Material: PVC base
- Removable by quick snaps and hooks

7.8 TRANSPORTATION KIT

Goose Neck

- Model:
- Flip Extension with 2" king pin
- Hydraulic removable gooseneck
- Fully integrated hydraulic control system
- Wide load adjustable flashing lights
- Color: Black

Tridem (Rear Bridge)

- Fully integrated air suspension control system

7.0 options (3)



patents: CA2712719A1, US20110120026

4115—18 Avenue North
Lethbridge AB T1H 5G1
403-257-8492

7.9 POWER SHACK

- Overall dimension
 - 10' Wide x 14' 10" Long x 8' 8" High
- Structure Material
 - Aluminum
- Roof Configuration
 - Flat
- Insulation
 - Insulation Type: Polyurethane foam insulation and air barrier
 - R Value 17.5
- Exterior Sheet Metal
 - Steel .021 Model Colonial Antique Linen (Other color schemes available on request)
- Interior Sheet Metal
 - Steel .021 Model Colonial Polar White
- Roof Sheet Metal
 - Steel .021 Galvanized Model Corrugated
- Certification
 - CSA Special Inspection on Electrical Installation (SPE 1000)
- Interior Lighting
 - 2 - 4' Light, vapor tight, (3 lamp T8)
- Exterior Lighting
 - 1 - 70 Watts High Pressure Sodium with Photocell
- Man Doors Opening Direction: Outswing - Material: Steel 20 Ga
 - Size : 32" x 80" Window: Thermos Wire Mesh 6mm, Hinges: Stainless Steel with Ball bearing,
 - Fire Rated: 45 min, Weather-strip Type: Commercial, Color: Medium Green
- Balcony - Complete fold away system integrated to Power Shack Structure
- Mechanical Dampers -Self-Controlled via thermostat
- 60 Amps Power Distribution Center- Main Disconnect 60 Amps
 - 10 KVA Transformer
- Receptacles Outside
 - 2 - 20 Amps GFCI T-Slot
- Receptacles Inside
 - 2 - 20 Amps T-Slot



7.0 options (4)

patents: CA2712719A1, US20110120026

4115—18 Avenue North
Lethbridge AB T1H 5G1
403-257-8492

7.11 GENERATOR SET D-50-6

- Brand: Caterpillar
- Model: D50-6
- Rated Power: 60 Kva
- Rated Voltage: 600/347 V
- Rated Frequency: 60 Hz
- Rated Current: 60 A
- Rated R.P.M.: 1800
- Tier 3 EPA Approved
- Fuel Tank
 - Material: Steel
 - Capacity: 1000 Liters
 - Fuel Monitoring: Mechanical level gauge (Visual)
 - Certification: CAN/CGSB 43.146-2002 or UL 142 or UL S601

7.12 GENERATOR SET D-80-6

- Brand: Caterpillar
- Model: D80-6
- Rated Power: 80 Kva
- Rated Voltage: 600/347 V
- Rated Frequency: 60 Hz
- Rated Current: 60 A
- Rated R.P.M.: 1800
- Tier 3 EPA Approved
- Fuel Tank
 - Material: Steel
 - Capacity: 1000 Liters
 - Fuel Monitoring: Mechanical level gauge (Visual)
 - Certification: CAN/CGSB 43.146-2002 or UL 142 or UL S601

7.0 options (5)



patents: CA2712719A1, US20110120026

4115—18 Avenue North
Lethbridge AB T1H 5G1
403-257-8492

7.10 **FRESH WATER TANK** (Integral to pup trailer / power shack)

- Capacity: 1500 Gal US
- Material: Aluminum 3/16"
- Inlet Connection Type: Camlock 2" Male
- Outlet Connection Type: Camlock 2" Male
- Vented
- Level Monitoring: Mechanical level gauge (Visual)
- Power Shack to accommodate Water Tank
 - 10' Wide x 14' 10" Long x 9' 10" High
- Balcony
 - Complete fold away system integrated to Power Shack Structure
- Water Tank Heater
 - Capacity: 800 Watts
 - Type: Radiant heat trace wire
- Water circulation pump



7.0 options (6)

patents: CA2712719A1, US20110120026

4115—18 Avenue North
Lethbridge AB T1H 5G1
403-257-8492

7.13 POWER DISTRIBUTION CENTER 100 AMPS

- Main Disconnect 100 Amps
- Power Distribution Cord:50 Feet 100 Amps

7.14 STORAGE BOXES

- 1 - Steel Tool Box 6" x 19" x 3"
- 1 - Aluminum Box 16" x 16" x 48"
- 2 - Aluminum Box 16" x 16" x 32"

7.15 TRANSFER SWITCH

- Switch to adapt for alternate power source

7.16 POWER SHACK HEATER

- 1 - 5 Kw forced air flow with integrated thermostat

7.17 GOOSENECK TO TRAILER CONNECTION KIT - N/A gooseneck connects directly to tridem trailer.

7.18 Air Conditioning - see supplier specifications

7.19 Installed Automated Wash System - see supplier specifications

7.20 Installed Manual Wash System - see supplier specifications

7.21 Water Filtration System -see supplier specifications

7.22 Automated Hydraulic Set-up / Take down Components

- Corner Lifting Devices (4)
- Side Pod Expansion Devices (2)
- Hydraulic Cylinders with 1-1/2" Shaft
- Automation Control



Sales: 403 - 257-8492
Engineering: 403-328-7788
Website: www.one4haul.com

4115-18 Avenue N.
Lethbridge, AB Canada
T1H 5G1

Design & Products protected under patents: CA2712719A1, US20110120026

103'-8"

Overhead doors for oil cube loading

Side Pod 1 (Oil Cube Storage)

Side Pod 2 (Waste Oil Evacuation Pump)

7'-10"

12.5' wide x 40.1' long footprint of
Caterpillar 988H Loader

Drive Through Bay 2—Maintenance & Wash Area

Side Pod 3 (Manual Wash Area)

Side Pod 4 (Manual Wash Area)

Tool Crib

20'-0"

8'-0"

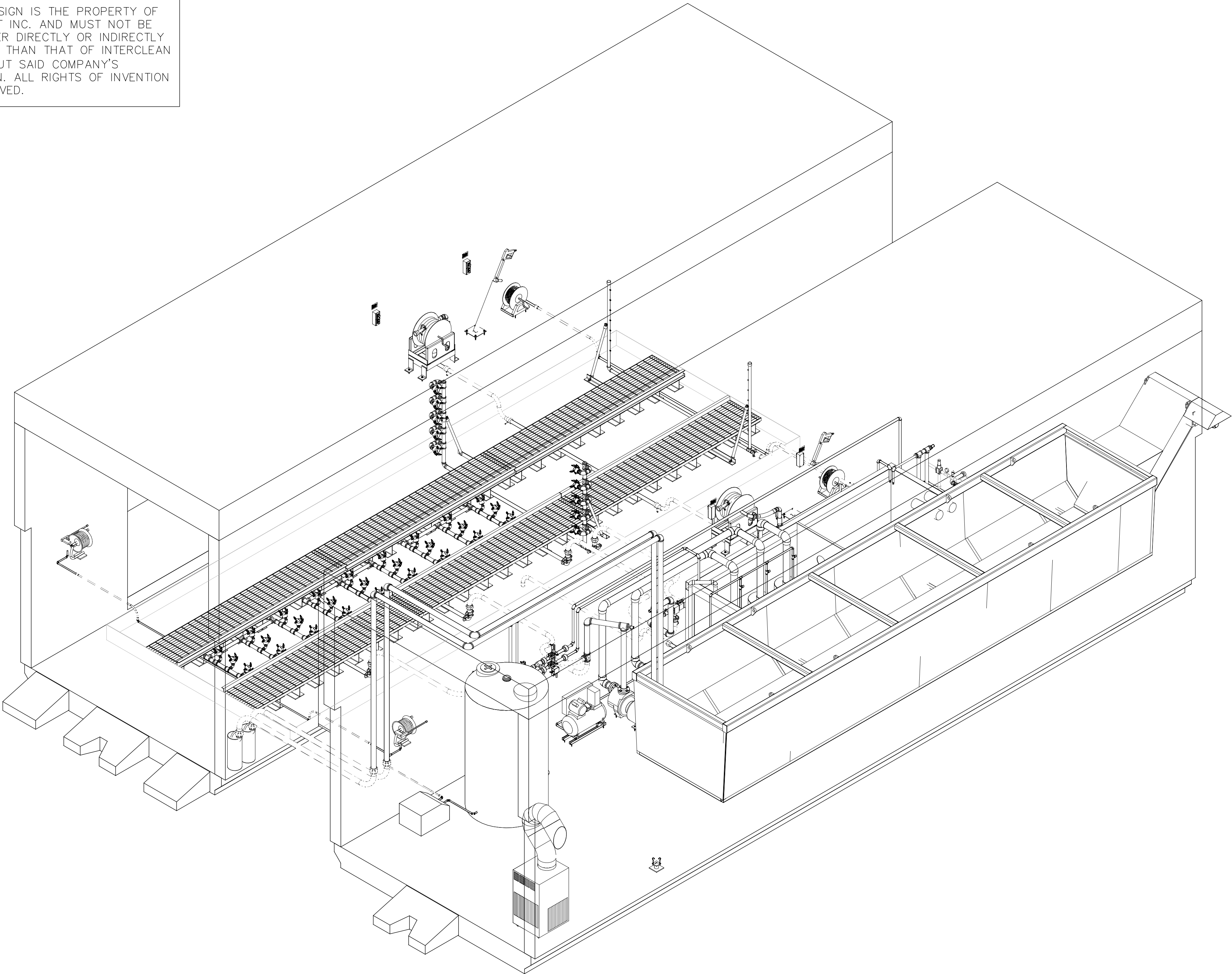
15'-7.25"

Noviclean wash equipment—see InterClean drawings

Floor Plan

REV-1 (SINGLE—MULTIUSE WASH AND MAINTENANCE BAY

NOTE:
THIS DRAWING AND DESIGN IS THE PROPERTY OF INTERCLEAN EQUIPMENT INC. AND MUST NOT BE COPIED OR USED EITHER DIRECTLY OR INDIRECTLY FOR ANY WORK OTHER THAN THAT OF INTERCLEAN EQUIPMENT INC. WITHOUT SAID COMPANY'S EXPRESSED PERMISSION. ALL RIGHTS OF INVENTION OR DESIGN ARE RESERVED.



R.	DATE	DESCRIPTION	BY	SL

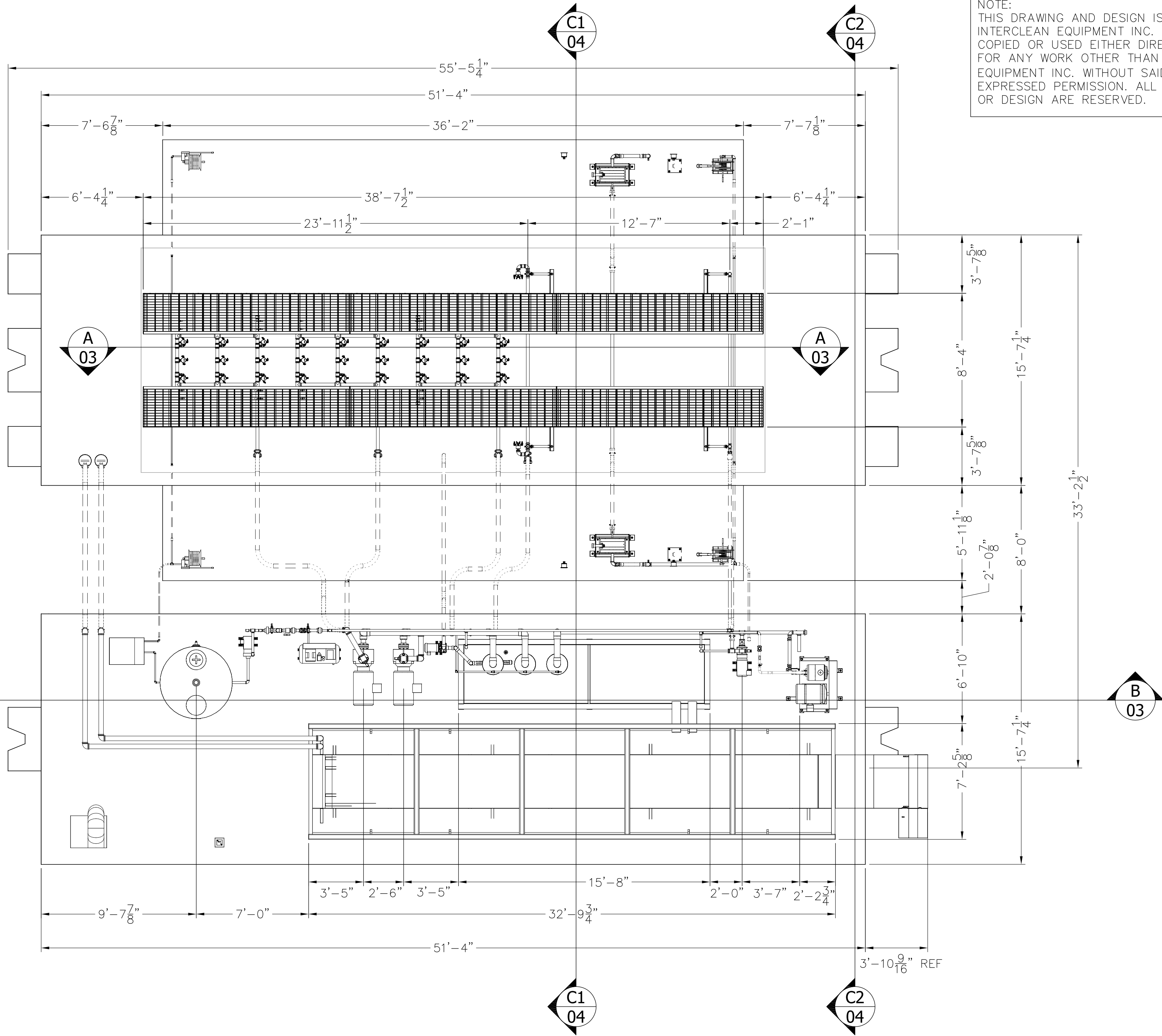
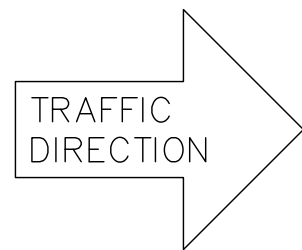
InterClean Equipment

DESIGN:	DRAWN:
SIMON	SIMON
CHECK:	APPR:
SCALE:	
X/X"=1'	

PORTABLE TRUCK WASH SYSTEM
TRUCK WASH, RECLAIM WATER SYSTEM
3-D VIEW

DATE:	07/07/16
PART NO:	#LYCN-PRT2-01
WEIGHT:	

NOTE:
THIS DRAWING AND DESIGN IS THE PROPERTY OF
INTERCLEAN EQUIPMENT INC. AND MUST NOT BE
COPIED OR USED EITHER DIRECTLY OR INDIRECTLY
FOR ANY WORK OTHER THAN THAT OF INTERCLEAN
EQUIPMENT INC. WITHOUT SAID COMPANY'S
EXPRESSED PERMISSION. ALL RIGHTS OF INVENTION
OR DESIGN ARE RESERVED.



R.	DATE	DESCRIPTION	BY	SL	

InterClean Equipment

DESIGN:	DRAWN:
SIMON	SIMON
CHECK:	APPR:
SCALE:	
1/4"=1'	

PORTABLE TRUCK WASH SYSTEM
TRUCK WASH, RECLAIM WATER SYSTEM
PLAN VIEW

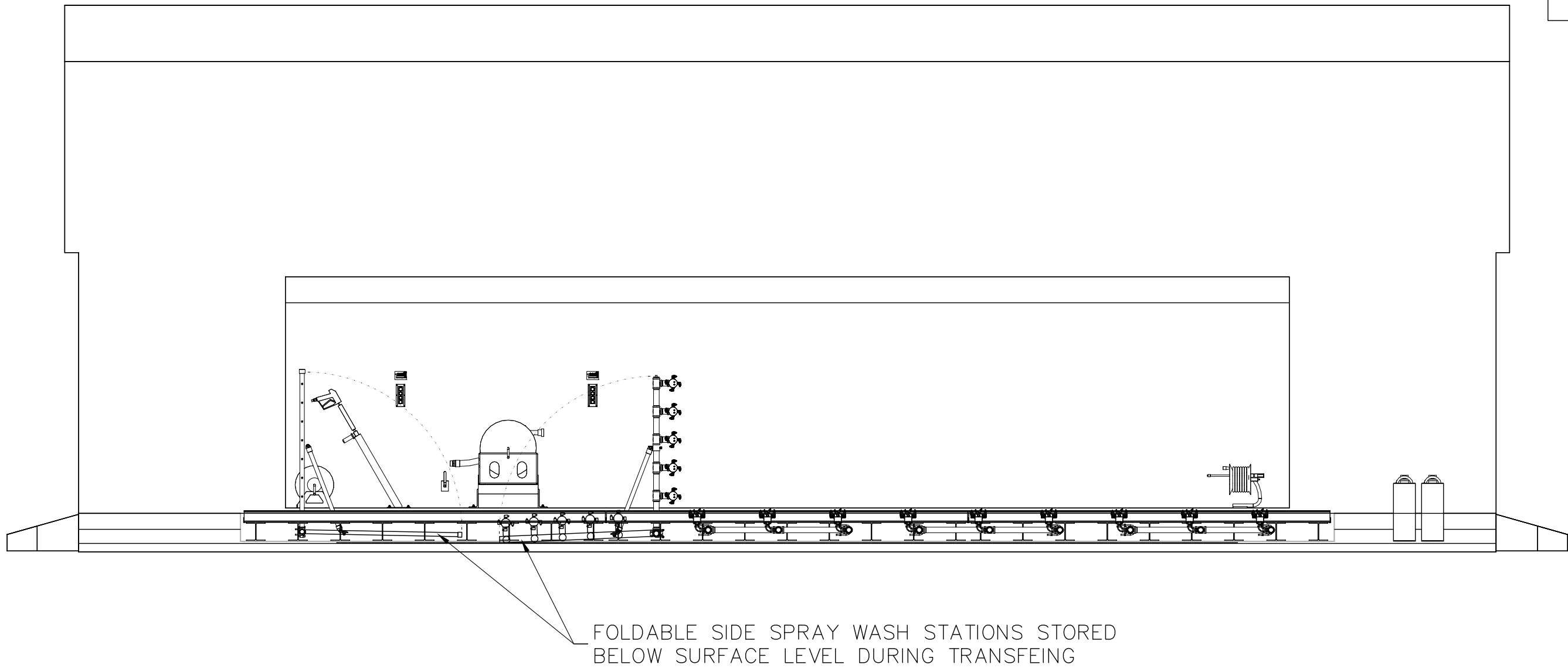
DATE:	07/07/16
PART NO:	#LYCN-PRT2-02
WEIGHT:	

SECTION

A03

SCALE 1/4"=1'

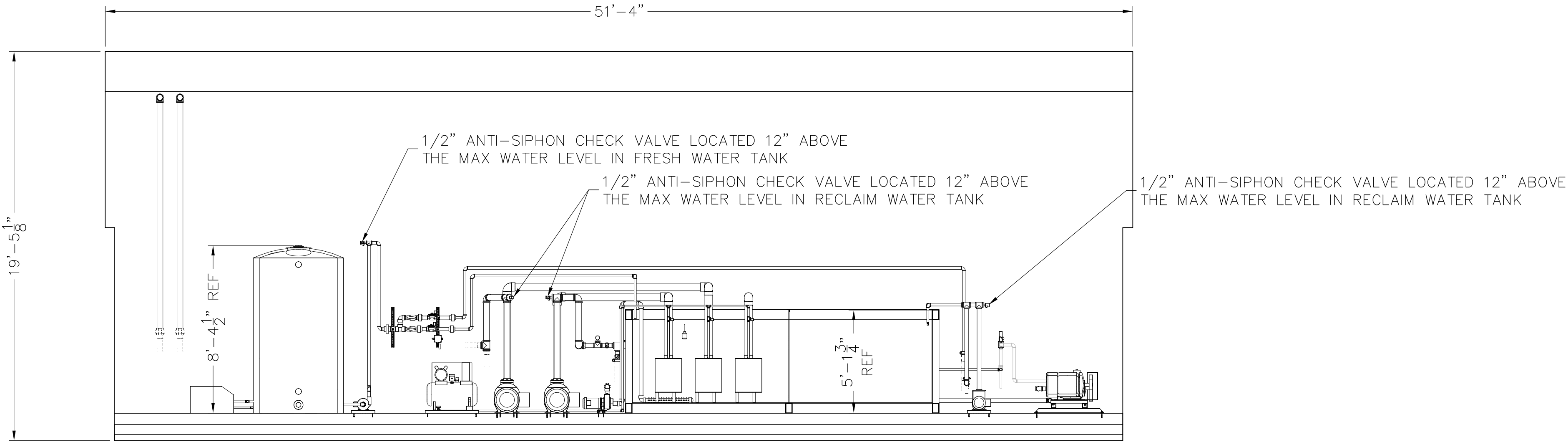
NOTE:
THIS DRAWING AND DESIGN IS THE PROPERTY OF INTERCLEAN EQUIPMENT INC. AND MUST NOT BE COPIED OR USED EITHER DIRECTLY OR INDIRECTLY FOR ANY WORK OTHER THAN THAT OF INTERCLEAN EQUIPMENT INC. WITHOUT SAID COMPANY'S EXPRESSED PERMISSION. ALL RIGHTS OF INVENTION OR DESIGN ARE RESERVED.



SECTION

B03

SCALE 1/4"=1'



R.	DATE	DESCRIPTION	BY	SL

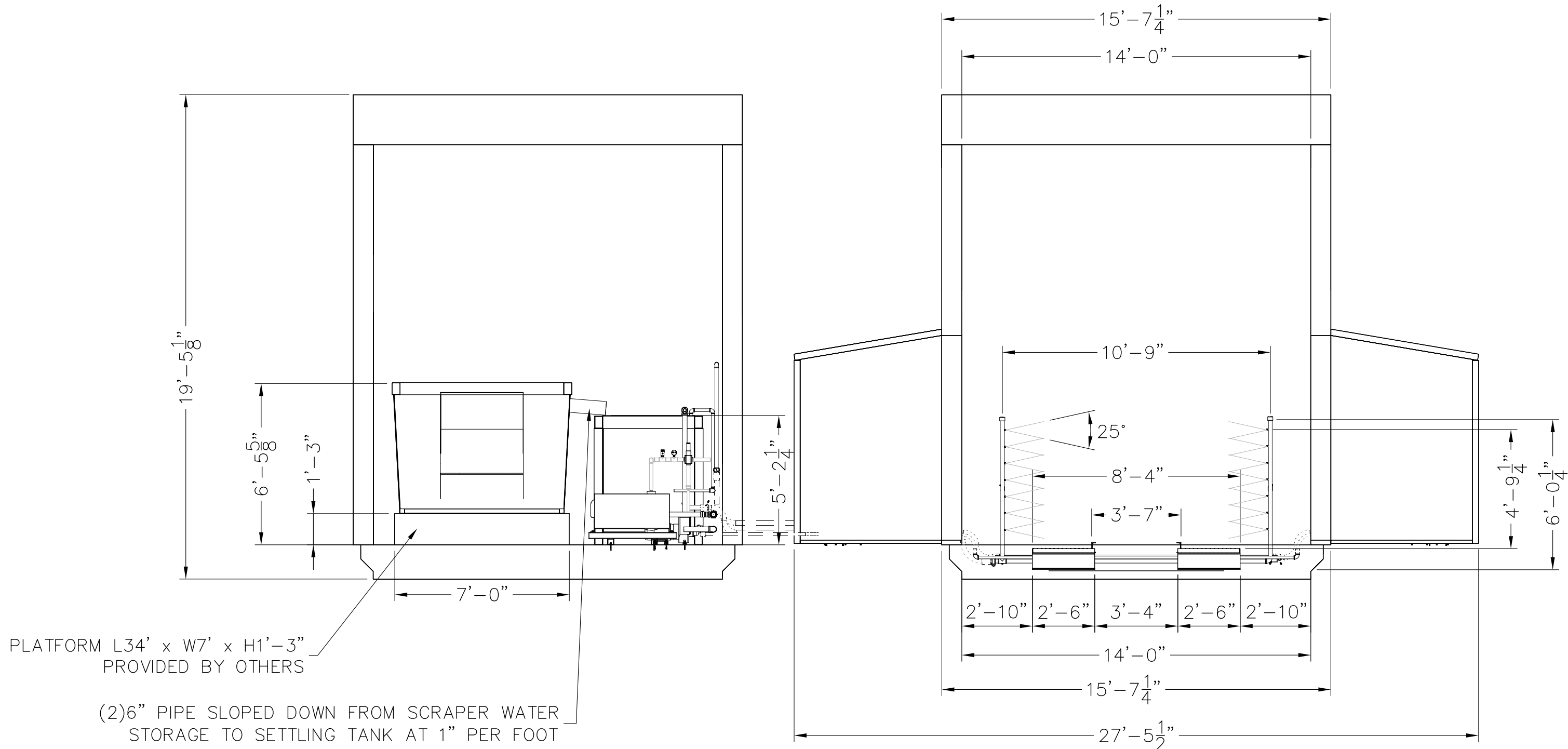
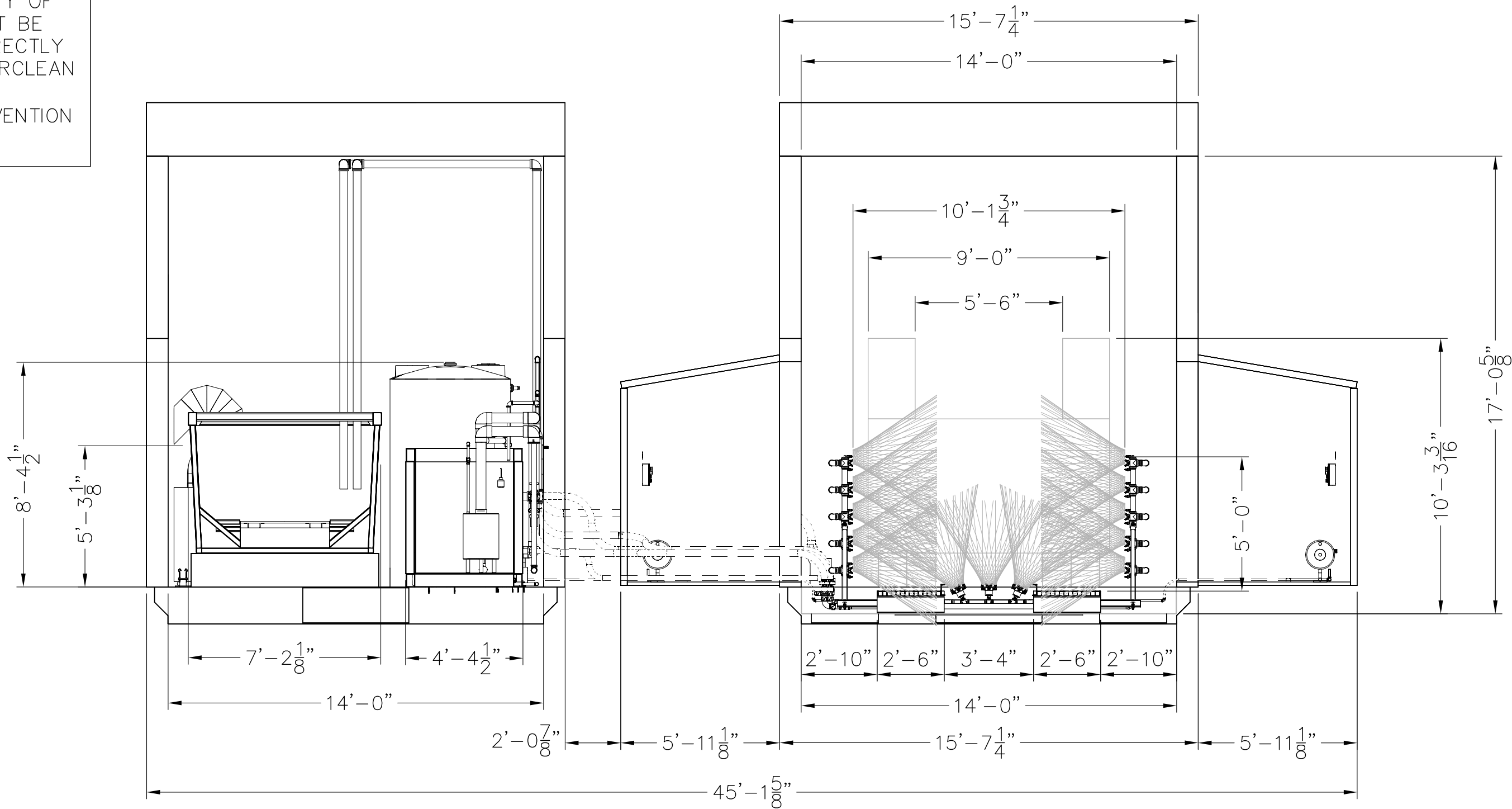
InterClean Equipment

DESIGN:	DRAWN:
SIMON	SIMON
CHECK:	APPR:
SCALE:	
1/4"=1'	

PORTABLE TRUCK WASH SYSTEM
TRUCK WASH, RECLAIM WATER SYSTEM
SIDE VIEW

DATE:	07/07/16
PART NO:	#LYCN-PRT2-03
WEIGHT:	

NOTE:
THIS DRAWING AND DESIGN IS THE PROPERTY OF
INTERCLEAN EQUIPMENT INC. AND MUST NOT BE
COPIED OR USED EITHER DIRECTLY OR INDIRECTLY
FOR ANY WORK OTHER THAN THAT OF INTERCLEAN
EQUIPMENT INC. WITHOUT SAID COMPANY'S
EXPRESSED PERMISSION. ALL RIGHTS OF INVENTION
OR DESIGN ARE RESERVED.



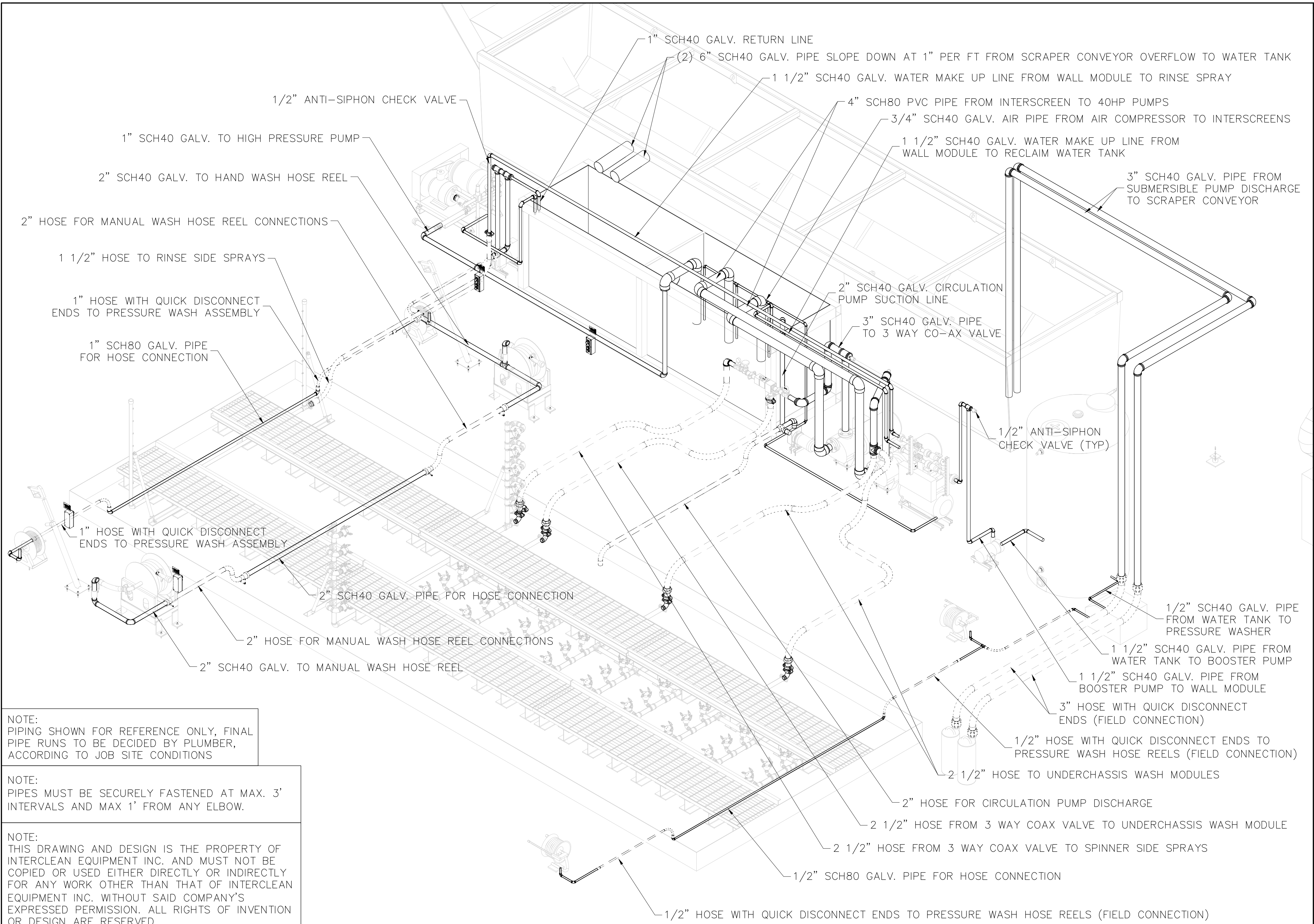
R.	DATE	DESCRIPTION	BY	SL	

InterClean Equipment

DESIGN:	DRAWN:
SIMON	SIMON
CHECK:	APPR:
SCALE:	
1/2"=1'	

PORTABLE TRUCK WASH SYSTEM
TRUCK WASH, RECLAIM WATER SYSTEM
END VIEW

DATE:	07/07/16
PART NO:	#LYCN-PRT2-04
WEIGHT:	



NOTE:
PIPING SHOWN FOR REFERENCE ONLY, FINAL
PIPE RUNS TO BE DECIDED BY PLUMBER,
ACCORDING TO JOB SITE CONDITIONS

NOTE:
PIPES MUST BE SECURELY FASTENED AT MAX. 3'
INTERVALS AND MAX 1' FROM ANY ELBOW.

NOTE:
THIS DRAWING AND DESIGN IS THE PROPERTY OF
INTERCLEAN EQUIPMENT INC. AND MUST NOT BE
COPIED OR USED EITHER DIRECTLY OR INDIRECTLY
FOR ANY WORK OTHER THAN THAT OF INTERCLEAN
EQUIPMENT INC. WITHOUT SAID COMPANY'S
EXPRESSED PERMISSION. ALL RIGHTS OF INVENTION
OR DESIGN ARE RESERVED.

R.	DATE	DESCRIPTION	BY	SL	

InterClean Equipment

DESIGN: SIMON	DRAWN: SIMON
CHECK:	APPR:
SCALE: X/X"=1'	

PORTABLE TRUCK WASH SYSTEM
TRUCK WASH, RECLAIM WATER SYSTEM
PIPING 3-D

DATE: 07/07/16
PART NO: #LYCN-PRT2-08
WEIGHT: