



APPENDIX 8-D

Addendums for Materials Management and Emergency Response Management Plans



8-D.3: Emergency Response Plan

ADDENDUM



AGNICO EAGLE

Project Name:	Meadowbank Gold Project	
Plan / Version:	Emergency Response Plan	Version WT; June 2016
NIRB Requirement:	Project Certificate No. 004	Condition: 44, 77,
NWB Requirement:	2AM-MEA-1525	Condition: Part B; Item 13 Part H, Item 1, 5, 6
Addendum:		
Section Change	Specify: Update or New	Details
Appendix 0	New	WT Addendum



AGNICO EAGLE

Meadowbank Division

Emergency Response Plan

Appendix 0 - Whale Tail Pit Emergency Response Plan

Prepared by:

Agnico Eagle Mines Limited – Meadowbank division

Version WT

June, 2016

EXECUTIVE SUMMARY

The Emergency Response Plan (ERP) is activated when an operations-related emergency, accident or malfunction occurs, or if such an incident is foreseeable. The ERP outlines potential emergency scenarios, initial actions for emergencies and the internal and external resources available including personnel, emergency response equipment and communication systems. This ERP applies to the Whale Tail Pit and the Whale Tail haul road, between Meadowbank and Whale Tail open pit. This is an appendix to the existing and approved Meadowbank ERP.

IMPLEMENTATION SCHEDULE

This Plan will be implemented immediately upon regulatory approval.

DISTRIBUTION LIST

Agnico Eagle – Linked to Intellex Documents on AEM Intranet system for following authorized users:

Agnico Eagle – General Mine Manager / Designate

Agnico Eagle – General Pit Supervisor or Site Manager - Whale Tail Pit Operations

Agnico Eagle – General Superintendent Maintenance

Agnico Eagle -- General Superintendent General Services

Agnico Eagle – Cost Management Superintendent

Agnico Eagle – Health and Safety Superintendent / Designate

Agnico Eagle – Human Resources Superintendent / Designate

Agnico Eagle – Engineering Superintendent / Designate

Agnico Eagle – Geology Superintendent / Designate

Agnico Eagle – Environment Superintendent / Designate

Agnico Eagle – Process Plant Superintendent / Designate

Agnico Eagle – Site Services Superintendent / Designate

Agnico Eagle – Mine Superintendent / Designate

Agnico Eagle – Whale Tail Open Pit Manager / Designate

Agnico Eagle – Maintenance Superintendent / Designate

Agnico Eagle – Emergency Response Counselors

Agnico Eagle – OHSC Co-chairs

Agnico Eagle – Security

Agnico Eagle – General Supervisor Inventory

Updated Hard copies distribution list:

Agnico Eagle -- Meadowbank Project Emergency Response Centers

DOCUMENT CONTROL

Version	Date (YMD)	Section	Page	Revision
WT	16/06/1 5	All	All	An appendix to the existing Meadowbank ERP

Table of Contents

SECTION 1 • INTRODUCTION	5
1.1 PURPOSE AND SCOPE OF THE EMERGENCY RESPONSE PLAN	5
1.3 POLICY WITH RESPECT TO CONTRACTORS AND VISITORS	7
SECTION 2 • ORGANIZATION AND JOB RESPONSIBILITIES	8
WHALE TAIL PIT EMERGENCY CONTROL TEAM	8
2.1.1 Official-in-Charge.....	9
2.1.2 General Superintendents	10
2.1.3 Incident Commander.....	11
2.1.4 Emergency Coordination Center Scribe	12
2.1.5 Whale Tail Pit Muster Stations Coordinator	12
2.1.6 Whale Tail Pit Emergency Response Team Duties	13
SECTION 3 • EMERGENCY RESPONSE EQUIPMENT	13
SECTION 4 • COMMUNICATION SYSTEMS	15
SECTION 5 • EMERGENCY MEASURES	15
5.1 FIRE	15
5.2 MUSTER POINT.....	16
5.3 MEDICAL EVACUATION PLAN	17
 Figure 1: Whale Tail Pit Access	 199
Figure 2: Whale Tail Pit Camp - site layout	20

SECTION 1 • INTRODUCTION

1.1 PURPOSE AND SCOPE OF THE EMERGENCY RESPONSE PLAN

The purpose of this Emergency Response Plan (ERP) is to provide a consolidated source of information for management, employees, contractors, and site visitors to respond quickly and efficiently to any emergency that may occur at the Whale Tail Pit operations.

Agnico Eagle Mines Limited – Meadowbank Division (Agnico Eagle) is proposing to develop the Whale Tail Pit and Haul Road, a satellite deposit located on the Amaruq property, to continue mine operations and milling at the Meadowbank Mine. Access to the Whale Tail Pit site is via a proposed 64 km haul road that connects the Whale Tail Pit site to Vault Pit and the approved Meadowbank mine site. The Meadowbank Mine site is accessible to Baker Lake by the All Weather Access Road, which connects Meadowbank to the Hamlet of Baker Lake (Refer to Figure 1). This ERP addresses transportation and related activities at the Whale Tail Pit site; it covers construction, operations and closure of Whale Tail Pit and is an Appendix to the approved Meadowbank ERP.

The goal of the ERP is to provide:

- A clear chain of command for safety and health activities;
- Well-defined corporate expectations regarding safety and health;
- Comprehensive hazard prevention and control methods; and
- Record-keeping requirements to track program progress.

AEM will ensure that all management, employees, contractors and site visitors at Whale Tail Pit fully understand and comply with all legislated safety standards, and the policies and procedures outlined in this appendix and the Main Meadowbank ERP.

The ERP is a working document that will be reviewed and updated by the ERT and Health and Safety department prior to the start of Whale Tail Pit construction, and will be update on a regular basis, as required. Upon regulatory approval of the Whale Tail Pit, it will be

reviewed annually, or more frequently as required, to ensure compliance with applicable legislation, to evaluate its effectiveness and to continually improve the procedures. All management, employees, contractors and site visitors are encouraged to offer suggestions for ways to eliminate potential hazards and improve work procedures.

1.2 AEM'S POLICY STATEMENT

AEM believes that all loss due to accidents/incidents is preventable. We aim to operate a safe and healthy work place that is injury and fatality free. We believe that if we all work together, we can achieve zero accidents in the work place and enhance the well-being of employees, contractors and communities.

Senior management is responsible for making funds and other resources available, including hiring and having trained qualified personnel, to ensure the successful implementation of the ERP in the event of an emergency.

All supervisors are responsible for ensuring that their employees are aware of, and trained in, the proper emergency response procedures and that procedures and contact information are posted in all work areas. Supervisors are also responsible for ensuring that all employees follow safe work methods and all related regulations to prevent emergencies from occurring, and that they are provided with the proper tools to do so, including Personal Protective Equipment (PPE).

Primary Emergency Response Obligations

Whale Tail Pit is located approximately 64 km along the Whale Tail Haul Road from the Meadowbank site. Due to this distance and the type of equipment available on site, there will be a small auxillary ERT team at Whale Tail Pit that will maintain the primary responsibility to respond to emergencies within the scope of their training and ability. The

Whale Tail Pit ERT will work in collaboration with the Amaruq Exploration ERT (located nearby but their team is focused on responding to Exploration activities). During emergencies, the Meadowbank ERT and coordination centre will be contacted and asked to 'STAND BY' to provide advice and additional support as conditions, weather, equipment and severity of emergency dictates. Contact between Meadowbank, Whale Tail Pit camp and Amaruq Exploration Camp will continue until the situation is resolved or a STAND DOWN is declared.

Note: *In the event Whale Tail Pit requires immediate emergency assistance from Meadowbank*, the procedure is to call **6911** on the camp telephone, and announce:

"Code 1 Meadowbank, Code 1 Meadowbank, Code 1 Meadowbank ", and:

Announce information in this order:

- 1. Who you are, 2. Where you are, 3. Nature of the event.***

1.3 POLICY WITH RESPECT TO CONTRACTORS AND VISITORS

Every person working at or visiting the Whale Tail Pit site shall receive an orientation upon arrival and as such is apprised of, and required to follow, the ERP policies and procedures set forth in this manual. For a complete list of all responsible supervisors or designates for the Meadowbank Mine, refer to Section 2 of the Main Meadowbank ERP.

SECTION 2 • ORGANIZATION AND JOB RESPONSIBILITIES

In the event of an emergency, the Whale Tail Pit Supervisor or Site Manager (or designate) will assume the role of Official in Charge (OIC). If the Site Manager is indisposed or injured in the emergency, the ERT Captain at Whale Tail Pit will assume the role.

All employees are responsible for:

- Ensuring site and personnel safety;
- Knowing the location of first aid stations and supplies, emergency and safety equipment (e.g., fire extinguishers, Materials Safety Data Sheets (MSDS), Spill Kits, First aid kits emergency exits, and muster stations;
- Wearing appropriate personal protective equipment (PPE) for the task at hand;
- Reporting all emergencies to their supervisor; and
- Reporting by radio to the Site Manager on the Whale Tail Pit working radio channel to describe the type, location, and nature of the emergency, including possible injuries, trapped personnel, and the presence of any chemical or explosive hazards. If no communication by the camp telephone or radio is possible, satellite phones can be used.

WHALE TAIL PIT EMERGENCY CONTROL TEAM

Table 2-1. Whale Tail Site Internal Emergency Response Contacts

Position and Name	Pager and/or Phone Number
Whale Tail Pit Supervisor	TBD
Incident Commander	TBD
Maintenance Supervisor	TBD
Etc.	

2.1.1 Official-in-Charge

The Official-in-Charge (Superintendent at Whale Tail Pit, Pit Supervisor, Whale Tail Manager or designates) will take charge for overseeing and approving the overall emergency response strategy.

Immediate duties of the Official-in-Charge include:

- Consult with the Incident Commander on the status of emergency.
- Appoint a scribe to maintain a written record of the time and events, all discussions, instructions and decisions made by the Emergency Control Team;
- Appoint a Muster Station Coordinator, who will ensure that proper head counts are conducted at three (3) designated muster stations at the Meadowbank site or at the two (2) designated muster stations at the Whale Tail camp site (Refer to Figure 2 with site layout and proposed muster station locations), depending on the location of the emergency;
- Assign specific tasks to members of the Emergency Control Team as they arrive at the Control Room;
- Brief the Emergency Control Team;
- Ensure that the safety of personnel is maintained throughout the operation;
- Ensure procedures are in place for prompt dispatch of requested personnel, materials and equipment to the emergency area;
- Arrange for all reports to be presented at specific intervals to the Emergency Control Team;
- Finalize the recommendations of the Incident Commander for rescue and recovery operations;
- The Official-in-Charge is the only person authorized to release information to Government Agencies, Corporate Office and/or Local Communities but this responsibility may be delegated to another member of the Emergency Control Team. In releasing information, the Official-in-Charge is to:
 - Verify all information before release;
 - Keep a record of all inquiries (media, government and members of the public);
 - Not speculate on causes;

- Not speculate on resumption of normal operations or when the problem will be solved; and
- Advise that further updates will be forth coming.
- Notify corporate management if the following occur:
 - Fatality;
 - A serious injury or multiple injuries;
 - In the event of a public health or environmental risk;
 - An incident involving hazardous chemicals where the volume or possible chemical reactions (i.e.; cyanide) could lead to serious consequences;
 - A spill of effluent, contaminated water or chemical substance outside the confines of the Project sites (i.e.; an external spill);
 - Operations are to stop for an extended time; and
 - Government authorities, public and/or media are to be informed of the emergency.
- Ensure all response teams, regulatory agencies and any other agency on emergency alert are advised when the emergency has ended;
- Ensure all documentation (i.e.; notes, log sheets, written instructions, etc.) is gathered for the creation of the final report; and
- Participate in debriefing.

2.1.2 General Superintendents

The responsibilities of the General Superintendents at Meadowbank and Whale Tail include:

- Superintendents of General Services and Operations and Maintenance will report to the Emergency Control Room and support the General manager/Designate in whatever capacity required;
- Ensure that all Department Superintendents or their designates are aware of the emergency; and
- Assist with the investigation and write up of the final report.

For a complete list of all emergency response contact information, other response designates and associated duties refer to Section 2 and 3 of the Meadowbank ERP.

2.1.3 Incident Commander

The Incident Commander is usually a trained staff member such as an ERT Coordinator or a Superintendent. The responsibilities of the Incident Commander include:

- Ensure Security is notified of the emergency;
- If required, ensure the evacuation procedures are activated, if required;
- Ensure that there are sufficient ERT members available to respond to the emergency;
- Ensure that the ERT has back-up support such as a standby ERT from Whale Tail or Meadowbank, depending where the emergency occurred;
- Ensure that ERT has refreshments and nourishment (if the emergency requires several hours to resolve);
- Assess the size and severity of the emergency and the likely consequences;
- Establish response priorities;
- Maintain communication with the ERT Captain;
- Advise the Official-in-Charge of the ERT's activities, regarding the rescue and recovery operations;
- Appoint sufficient personnel, equipment and outside services are available. Utilize the members of the Emergency Control Team to organize these resources;
- Advise Official-in-Charge when the emergency situation is under control and give the "All Clear";
- Participate in emergency investigation;
- Coordinate an orderly return to normal operating conditions;
- Arrange for a debriefing session, and utilize the services of all involved in resolving the emergency; and
- Assist in writing the final report.

2.1.4 Emergency Coordination Center Scribe

The Emergency Coordination Center Scribe is to keep a systematic record of events from the start of the emergency through all phases to its termination. The record is to be legible and record all relevant information as it will be used in the debriefing following the conclusion of the emergency and in the preparation of the final report. The individual selected should have experience in recording events and decisions clearly and succinctly during the emergency.

The record taken by the scribe is to include:

- An accurate head count from the muster stations during an emergency;
- Date and time the incident was reported and who reported the incident;
- Every person entering or exiting the Emergency Control Room;
- Record all developments as they occur;
- Record all phone calls, all discussions and decisions made;
- Record any other information that needs to be captured for the final report;
- Keep all the sheets of paper used to record information numbered for the final report;
- All the pages will be initialed by the recorder and Official-in-Charge; and
- The official document will stay with the Health & Safety Department upon completion of the emergency.

2.1.5 Whale Tail Pit Muster Stations Coordinator

When the site's Management begins to assemble in the Emergency Control Room, the Official-in-Charge (manager or designate) will assign a member of the Management Team to be the Muster Stations Coordinator.

The responsibilities of the Muster Stations Coordinator includes:

- The Muster Stations Coordinator is required to contact the site's Muster Stations by radio on channel "**Spare RPTR**" to ensure that there is a Supervisor or designate in charge of that specific muster station and give him/her 20 minutes to complete the head count;

- The Muster Stations Coordinator will need to record the time the muster station was called, who is in-charge of the muster station, and any other instructions that were given; and
- The Muster Stations Coordinator needs to open the Flo (the logistics software system that tracks employees onsite) on his/her laptop in order to cross reference the names once they receive the written or electronic lists from the Muster Stations. (Additional persons may need to be assigned to assist with the cross reference, in order to complete the head count in a timely manner).

2.1.6 Whale Tail Pit Emergency Response Team Duties

The responsibilities of the ERTs at Meadowbank and Whale Tail include:

- The ERT Members must report to the fire hall when a Code One emergency is called;
- ERT Members will be given instructions on the emergency by the Incident Commander;
- ERT Members will follow instructions from the Incident Commander and not place the Team at risk; and
- The ERT Captain will maintain radio contact with the Incident Commander throughout the emergency.

For a complete list of all emergency response contact information, other response designates and associated duties refer to Section 2 and 3 of the Meadowbank ERP. The list of responsible personnel specific to the Whale Tail Pit operations will be updated by the Meadowbank ERT and Health and Safety department prior to the construction and operation at Whale Tail Pit.

SECTION 3 • EMERGENCY RESPONSE EQUIPMENT

In remote areas safety heavily relies on communications and equipment. The Whale Tail Pit camp will be equipped with fire, medical air and land transport, power generation and trained personnel.

- Every First Aid Station is equipped with a First Aid kit and fire extinguisher (First Aid Station at Muster 1 also has an Iridium Satellite phone).

- All personnel engaged in outdoor activities are equipped with and trained in the use of a GPS SPOT Messenger device. A real time location of each unit can be accessed on-line 24/7.
- All personnel working away from camp will be equipped with a radio, depending on the radio repeater range as well as a satellite telephone. Personnel will also carry and be trained in the use of a SPOT GPS device with charged lithium batteries.
- The drills have a shelter stocked with emergency food, generator and heater in case of emergency. At the drill there are radios and a satellite phone.
- There is a Snow Cat on station and operators in camp.
- There will be either a helicopter or fixed wing aircraft, or both, stationed and working throughout the length of the drill program.
- The helicopter has a complete survival kit (food for 6 persons for 7 days, tent, etc.), a first aid kit, an extinguisher, an ELT (Emergency location transmitter), a satellite phone and a GPS linked to its main office.
- Electrical power generation for camp heat and light. In the event of a camp evacuation, a spare generator and fuel is located in the emergency storage container located next to the core shack (muster station #2).
- To react to animal attack, bear sprays and bear horn are available at the Whale Tail Pit camp.

SECTION 4 • COMMUNICATION SYSTEMS

Key site personnel will be accessible at all times via portable radios, office radios or telephone. For on-site communication (between the camp, supervisors, operators, drills, surveyors, equipment operators), hand-held radios are mandatory. Satellite phones will be available to all personnel working away from camp. Secondary communications will be via the camp phone system, backed up by satellite phones. Back-up power sources and replacement batteries for communications equipment will be available to provide continuous, uninterrupted operation either at fixed facilities or at emergency sites.

SECTION 5 • EMERGENCY MEASURES

5.1 In ANY Emergency all work will stop.

5.1 FIRE

All personnel to receive basic training in the use of fire extinguishers and key personnel at Whale Tail camp will receive ERT training by the Meadowbank personnel. For any situation involving fire, the first action will be to extinguish the fire if it is safe to do so and then report the incident. If the fire cannot be put out safely, the **Emergency Fire Response Plan** will be enacted.

In the event that a fire causes damage to equipment, Whale Tail site buildings, or hazardous material, particulates and/or gases could be released into the air, and hazardous materials and/or other chemicals (e.g., fuels, oils, battery acid, etc.) could be spilled. In the short-term, this could result in air quality degradation, and potentially affect the local vegetation in the case of a spill or burn scar. Should such scenarios occur, the following actions will be taken in collaboration with the Meadowbank environmental department, as required and WHEN IT IS SAFE TO DO SO:

- Air quality monitoring for airborne emissions;
- Collection and incineration of all putrescible (food items);

- Removal of debris and contaminated soil for disposal on-site or off-site at a licensed disposal facility;

5.2 MUSTER POINT

In the event that a camp evacuation is necessary, it is important that all affected personnel leave the emergency area and congregate at a pre-determined area or *Muster point* so that a head count can be taken to determine if there are any missing persons (Refer to Figure 2 for proposed Whale Tail Pit Muster Points). Employees must remain at the muster point until the supervisor of the emergency area gives permission to return to work.

Upon hearing an alarm, or evacuation alarm:

- **Do Not Panic** – Always be prepared for weather conditions - dress appropriately (Winter clothing during winter months).
- **DO NOT delay** and **DO NOT stay** and finish work before taking the proper steps to evacuate.
- **Always** head to the **closest** EXIT door and follow EXIT signs to the closest outside door.
- Once outside proceed immediately to the predetermined **“Muster point”**.
- Once at the **“Muster point”** Stay put until relieved or instructed otherwise by your Supervisor.
- Your Supervisor and/or Senior Management person in your dept. will make a **Roll Call** (head count) of everyone in his/her department. Personally confirm your name is on the **Muster List**.
- **DO NOT enter** a building when the alarm is sounding. Head straight to a **“Muster point”**.
- **Never** go through a building to get to a **“Muster point”**. Once you are outside, the first door you open should be the one to the **“Muster point”**.
- **Never** pass through smoke going to a muster point. If smoke blocks the hallway/pathway, use an alternate exit or go to the alternate muster point.

- **Never** disregard an evacuation alarm. We understand that the system goes off without incident on occasion, but to disregard an ***alarm is to endanger your life and the lives of others.***
- **Stay in “Muster point”** until you are instructed to **“Stand Down”** by the PIC.
- **Do Not** leave **“Muster point”** to go outside for a smoke. It is important for your Supervisor to know where you are at all times – especially during an **“Emergency”**.
- The only person authorized to initiate a **“Stand Down”** is the PIC or the Site Manager or designate.
- **Failure to follow** proper Evacuation Procedures will result in Disciplinary Action.
- The **“Muster points”** for Whale Tail Pit will be determined by the Whale Tail Pit ERT team, identified with signs and communicated to all employees.

5.3 MEDICAL EVACUATION PLAN

The Whale Tail Pit auxiliary ERT will be the primary responder to on-site injuries but will contact the Meadowbank nurse/facility and Meadowbank ERT team as soon as practical for advice and assistance if needed. The Medical Evacuation plan procedures in the Meadowbank Response Plan will be followed and are outlined in Section 5 of the approved plan. In certain circumstances, if a spontaneous evacuation is initiated from Whale Tail Pit, the Meadowbank First Aid Treatment Room will be provided with as much advance notice as possible.

- Once the “Mechanisms of Injury” and the patient’s condition have been assessed, a decision will be made by the (Nurse / Medic) whether a Medevac is required and decide on ground or air transportation. There are guidelines to follow to make this determination.
- Meadowbank Nurse / Medic, the Whale Tail Pit First Responders and the Emergency control team, will apply the protocol and procedures described in the Whale Tail Pit Emergency Response Plan to advise and help formulate an appropriate response.

- Depending on the type of injury the Meadowbank nurse may be transported to Whale Tail Pit to stabilize, administer emergency care and then accompany the patient to Meadowbank or a regional hospital. This determination will be made on a case by case basis as advised by the MBK nurse.
- If a medical evacuation to Meadowbank is required, the helicopters and/or fixed wing aircraft on station at Amaruq Exploration camp will be the primary source of transport to save time. The patient will be transferred to the Meadowbank facility or directly to a regional hospital, depending on the type of injury and the advice of the Meadowbank nurse.
- During the winter, if the helicopter cannot fly and the casualty (s) require (s) immediate assistance, the Exploration team will determine if the land access road conditions are an appropriate and safe option to transport patients. During the summer if the weather is bad enough for the helicopter to stay on ground a SPOT device can be activated to inform the Coast Guard of the location and that emergency assistance is required. If the problem is only mechanical, the assistance of another helicopter or float plane in the sector would be deployed. Aircraft or land vehicles will inform Meadowbank prior to arrival.
- Vehicles transporting casualty(s) will have priority over any other vehicle on site.
- As soon as the immediate actions required to resolve the emergency are completed, the Meadowbank General Manager or designate will inform the authorities, nurses and required health care specialists according to the Meadowbank ERP.

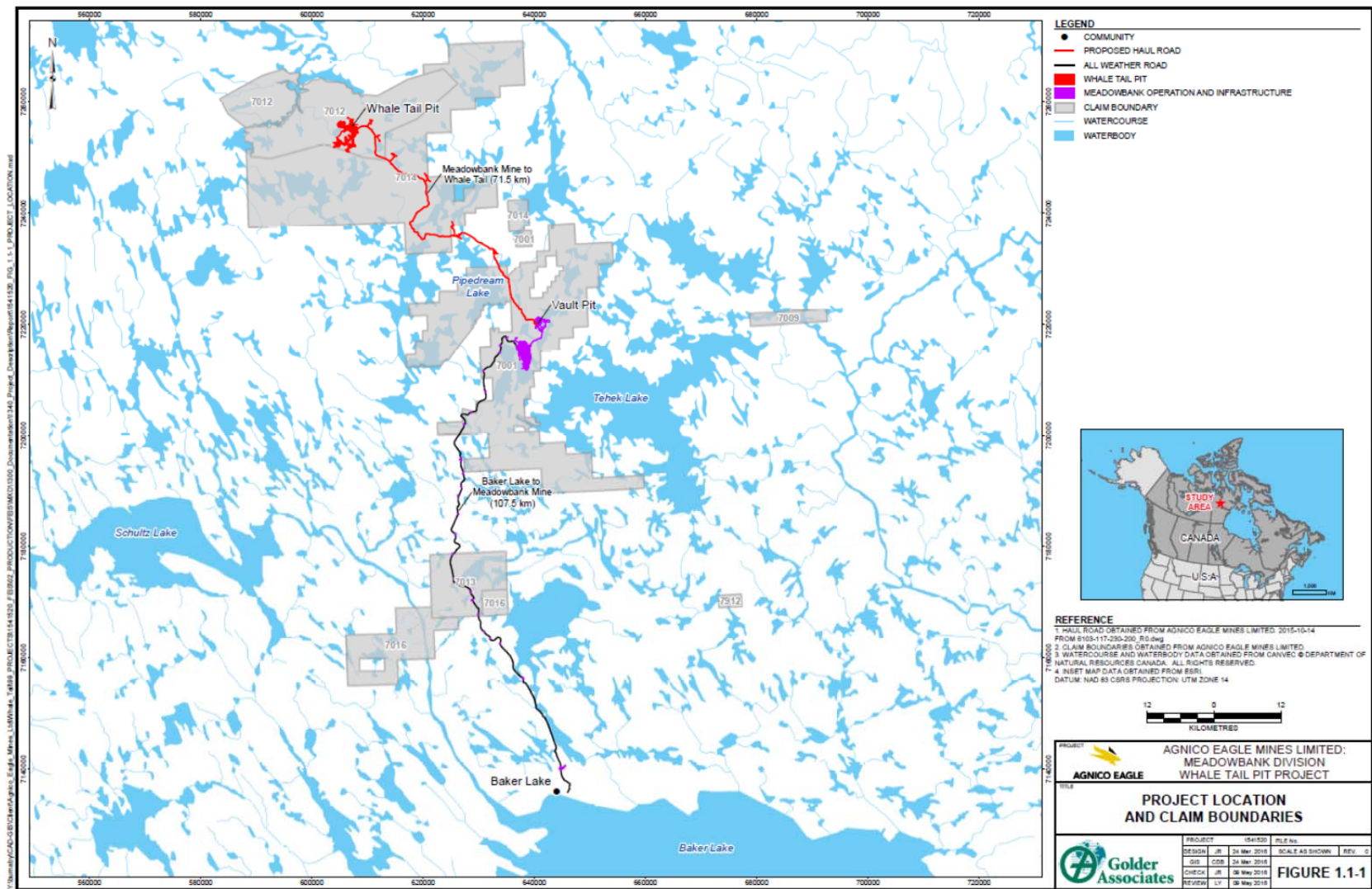


Figure 1: Whale Tail Pit Access

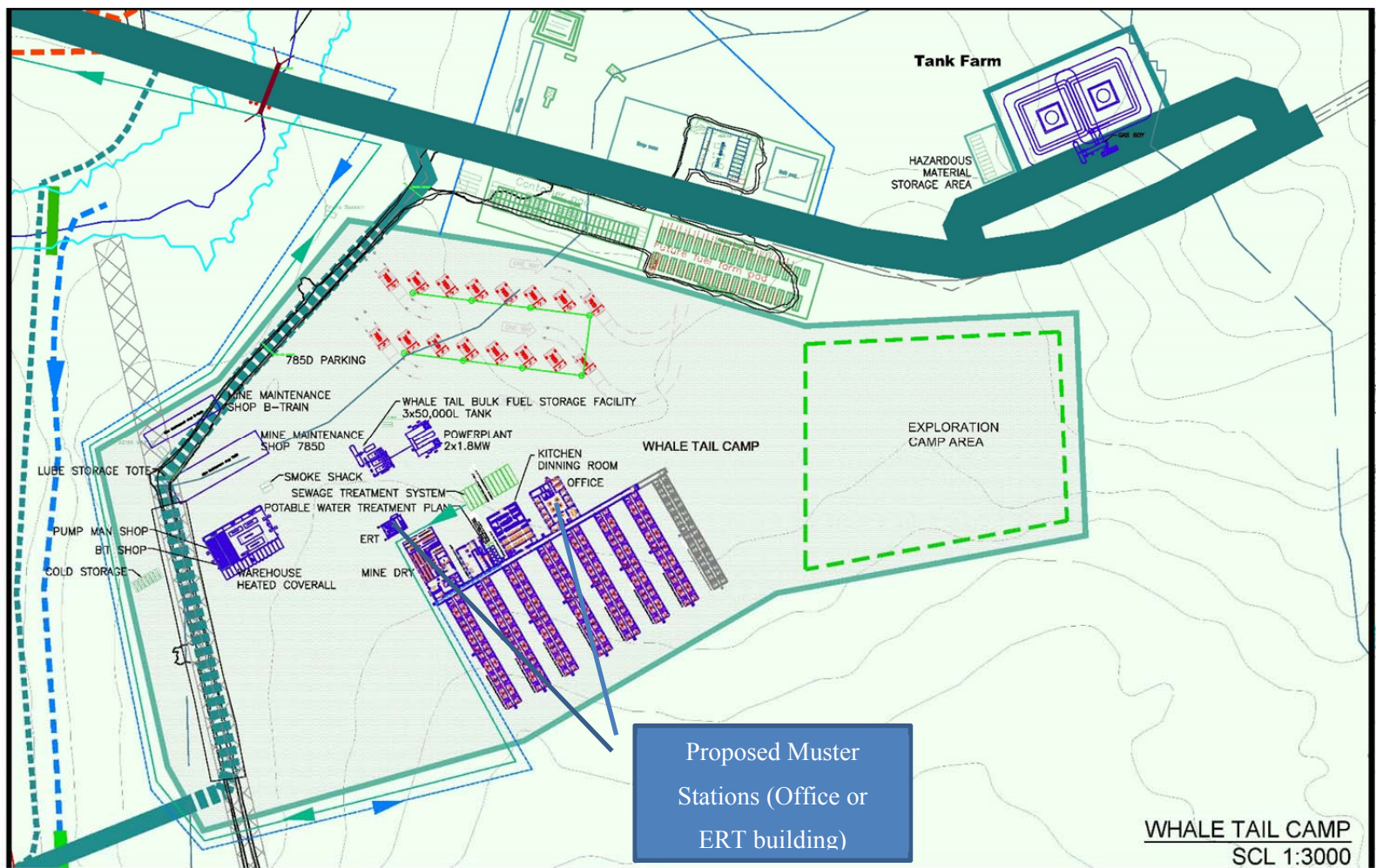


Figure 2: Whale Tail Camp - Site Layout