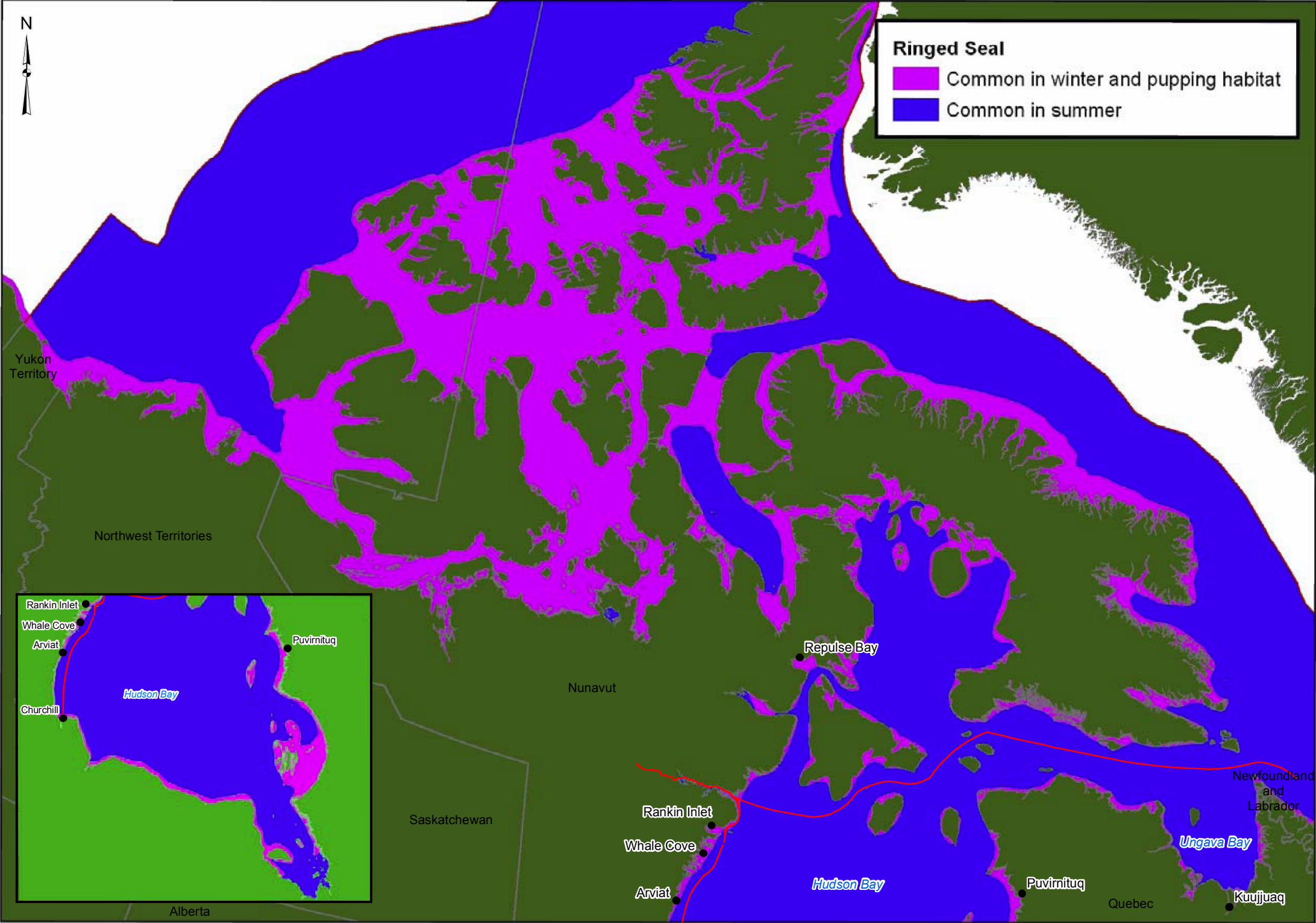


Y:\burnaby\CAD-Client\Agnico\_Eagle\_Mines\_Ltd\Whale\_Tail\99\_PROJECTS\1541520\_FEIS\02\_PRODUCTION\FEIS\MXD\3600\_Marine\Report\1541520\_FIG\_6\_Distribution\_of\_Ringed\_Seal.mxd



**LEGEND**

— SHIPING ROUTE

**REFERENCE**

1. PROVINCIAL DATA OBTAINED FROM E.S.R.I.  
2. BASE IMAGE OBTAINED FROM STEPHENSON AND HARTWIG, 2010  
3. SHIPPING ROUTE DATA OBTAINED FROM THE DEPARTMENT OF NATURAL RESOURCES CANADA. ALL RIGHTS RESERVED.

DATUM: NAD 83 PROJECTION: CANADA ALBERS EQUAL AREA CONIC

240 0 240  
KILOMETRES

PROJECT

**AGNICO EAGLE**

AGNICO EAGLE MINES LIMITED:  
MEADOWBANK DIVISION  
WHALE TAIL PIT PROJECT

TITLE

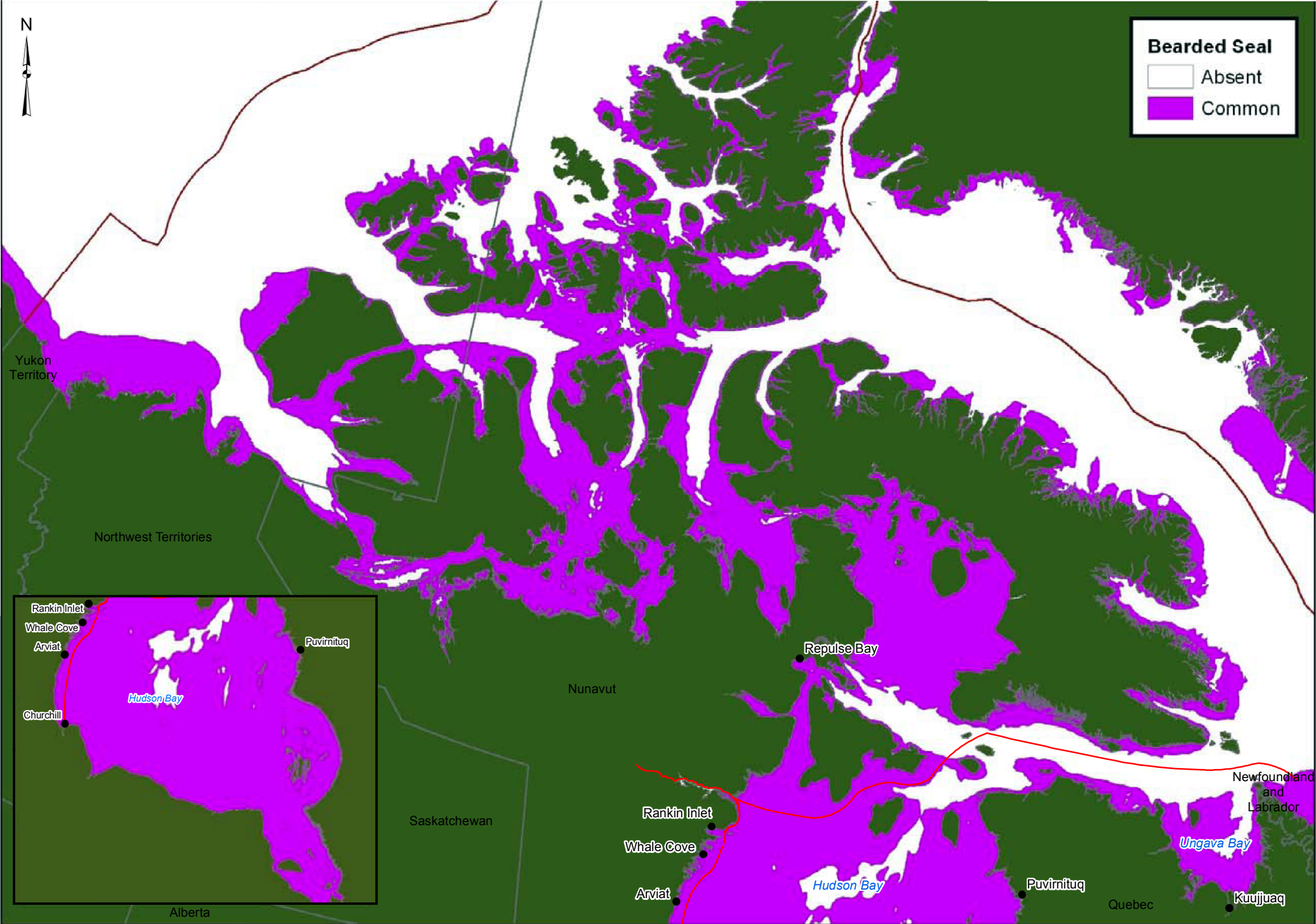
**DISTRIBUTION OF RINGED SEAL  
(*Phoca hispida*) IN HUDSON BAY, HUDSON  
STRAIT AND ADJACENT ARCTIC WATERS**

**Golder Associates**

PROJECT NO.	1541520	FILE No.	
DESIGN	AK	19 Jul. 2012	SCALE AS SHOWN
GIS	DSC	19 Jul. 2012	REV. 0
CHECK	AO	06 Jun. 2016	
REVIEW	PR	06 Jun. 2016	

**FIGURE 3.A.6**

Y:\burnaby\CAD-GIS\Client\Agnico\_Eagle\_Mines\_Ltd\Whale\_Tail\99\_PROJECTS\1541520\_FEIS\02\_PRODUCTION\FEIS\MXD\3600\_Marine\Report\1541520\_FIG\_7\_Distribution\_of\_Bearded\_Seal.mxd



**LEGEND**

— SHIPING ROUTE

**REFERENCE**

1. PROVINCIAL DATA OBTAINED FROM E.S.R.I.  
2. BASE IMAGE OBTAINED FROM STEPHENSON AND HARTWIG, 2010  
3. SHIPPING ROUTE DATA OBTAINED FROM THE DEPARTMENT OF NATURAL RESOURCES CANADA. ALL RIGHTS RESERVED.

DATUM: NAD 83 PROJECTION: CANADA ALBERS EQUAL AREA CONIC

2400240

KILOMETRES

PROJECT

**AGNICO EAGLE**

AGNICO EAGLE MINES LIMITED:  
MEADOWBANK DIVISION  
WHALE TAIL PIT PROJECT

TITLE

**DISTRIBUTION OF BEARDED SEAL  
(*Erignathus barbatus*) IN HUDSON BAY, HUDSON  
STRAIT AND ADJACENT ARCTIC WATERS**

**Golder  
Associates**

PROJECT NO.		1541520	FILE No.	
DESIGN	AK	19 Jul. 2012	SCALE AS SHOWN	
GIS	DSC	23 Jul. 2012	REV.	0
CHECK	AO	06 Jun. 2016	<b>FIGURE 3.A.7</b>	
REVIEW	PR	06 Jun. 2016		