

Legend

- Proposed Road
- RSA Boundary
- GN/GNWT Annual Home Ranges***
 - Ahiak Herd
 - Wager Bay Herd
 - Lorillard Herd
 - Qamanirjuaq Herd
 - Beverly Herd
- GN/GNWT Calving Grounds***
 - Ahiak Herd
 - Qamanirjuaq Herd
 - Lorillard Herd
 - Wager Bay Herd
 - Beverly Herd - North
 - Beverly Herd - South

*Home ranges and calving grounds are part of a publication. The ESA citation is as follows: Nagy, J. A., D. L. Johnson, N. C. Larter, M. W. Campbell, A. E. Derocher, A. Kelly, M. Dumond, D. Allaire, and B. Croft. 2011. Subpopulation structure of caribou (Rangifer tarandus L.) in arctic and subarctic Canada. Ecological Applications [doi:10.1890/10-1410.1].

**Terrestrial Baseline Characterization Report
Caribou Calving Areas**

DOUGAN & ASSOCIATES
ECOLOGICAL CONSULTING & DESIGN
77 Wyndham Street South • Guelph, ON N1E 5R3
T 519.822.1609 • F 519.822.5389 • www.dougan.ca

Nunavut ENVIRONMENTAL CONSULTING LTD

CASLYS CONSULTING

PROJECT: Whale Tail Pit & Haul Road

CLIENT: Agnico Eagle Mines Limited

UTM Zone 14 NAD83

DATE: OCTOBER 2015

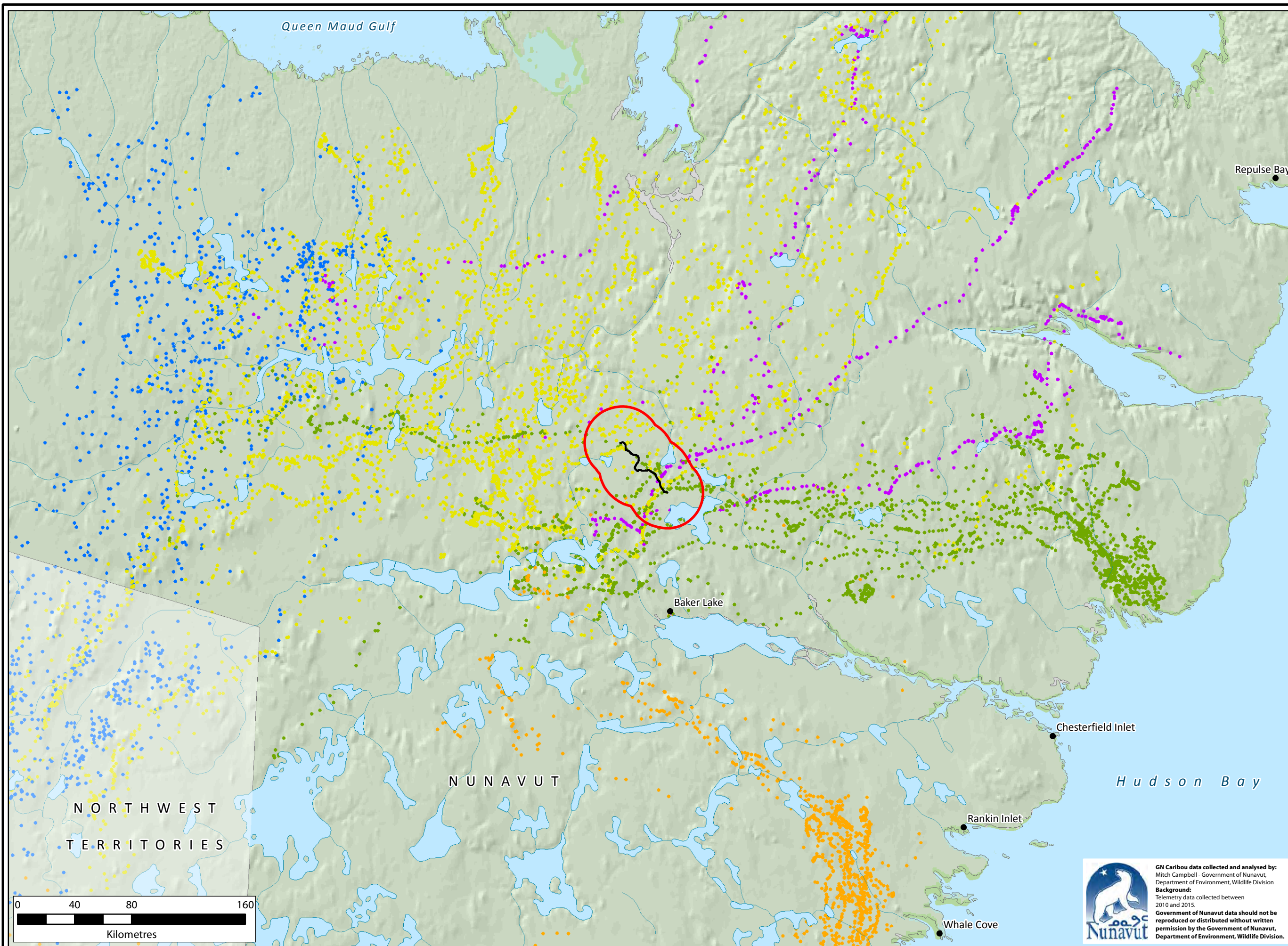
SCALE: 1:4,000,000

DRAWN BY: Caslys

CHECKED BY: MG, MAY

Figure: 7.1

The information displayed on this map has been compiled from various sources. While every effort has been made to accurately depict the information, this map should not be relied on as being a precise indicator of locations, features, or roads, nor as a guide to navigation. MNR data provided by Queen's Printer of Ontario. Use of the data in any derivative product does not constitute an endorsement by the MNR or the Ontario Government of such products.



Legend

- Proposed Road
- RSA Boundary

Telemetry Location by Herd

- Ahiak
- Beverly
- Lorillard
- Qamanirjuaq
- Wager Bay

Terrestrial Baseline
Characterization Report
Spring Caribou Collaring Data
(April 1 - May 25)

DOUGAN & ASSOCIATES
ECOLOGICAL CONSULTING & DESIGN
77 Wyndham Street South • Guelph, ON N1E 5R3
T 519.822.1609 • F 519.822.5389 • www.dougan.ca

Nunavut ENVIRONMENTAL CONSULTING LTD

CASLYS CONSULTING

PROJECT: Whale Tail Pit & Haul Road

CLIENT: Agnico Eagle Mines Limited

UTM Zone 14 NAD83

DATE: OCTOBER 2015

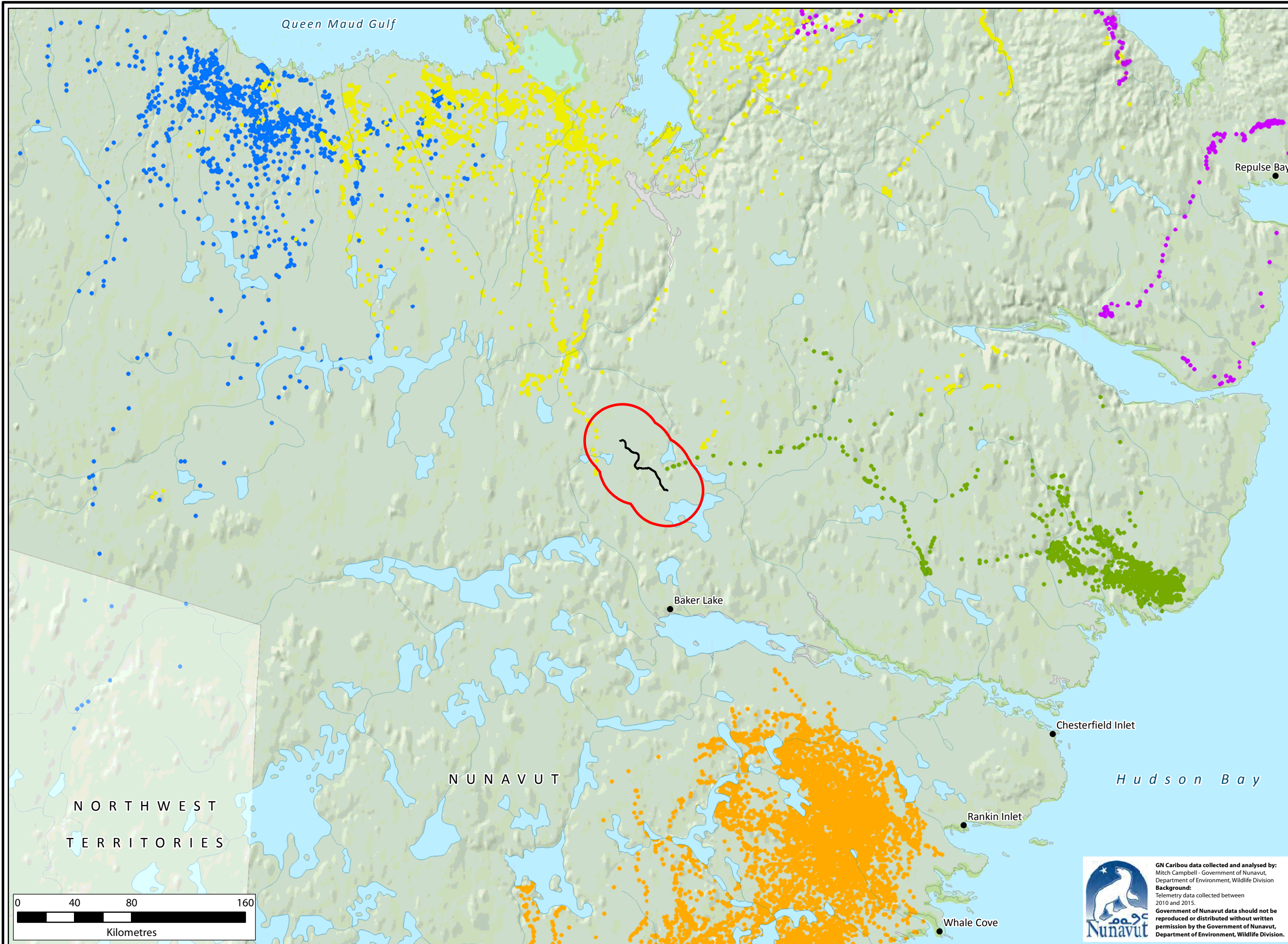
SCALE: 1:2,500,000

DRAWN BY: Caslys

CHECKED BY: MG, MAY

Figure: 7.2

The information displayed on this map has been compiled from various sources. While every effort has been made to accurately depict the information, this map should not be relied on as being a precise indicator of locations, features, or roads, nor as a guide to navigation. MNR data provided by Queen's Printer of Ontario. Use of the data in any derivative product does not constitute an endorsement by the MNR or the Ontario Government of such products.



Legend

— Proposed Road

□ RSA Boundary

Telemetry Location by Herd

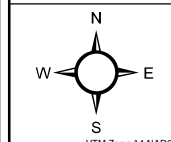
- Ahlak
- Beverly
- Lorillard
- Qamanirjuaq
- Wager Bay

Terrestrial Baseline
Characterization Report
Calving Caribou Collaring Data
(May 26 - June 25)



PROJECT: Whale Tail Pit & Haul Road

CLIENT: Agnico Eagle Mines Limited



DATE: OCTOBER 2015

SCALE: 1:2,500,000

DRAWN BY: Caslys

CHECKED BY: MG, MAY

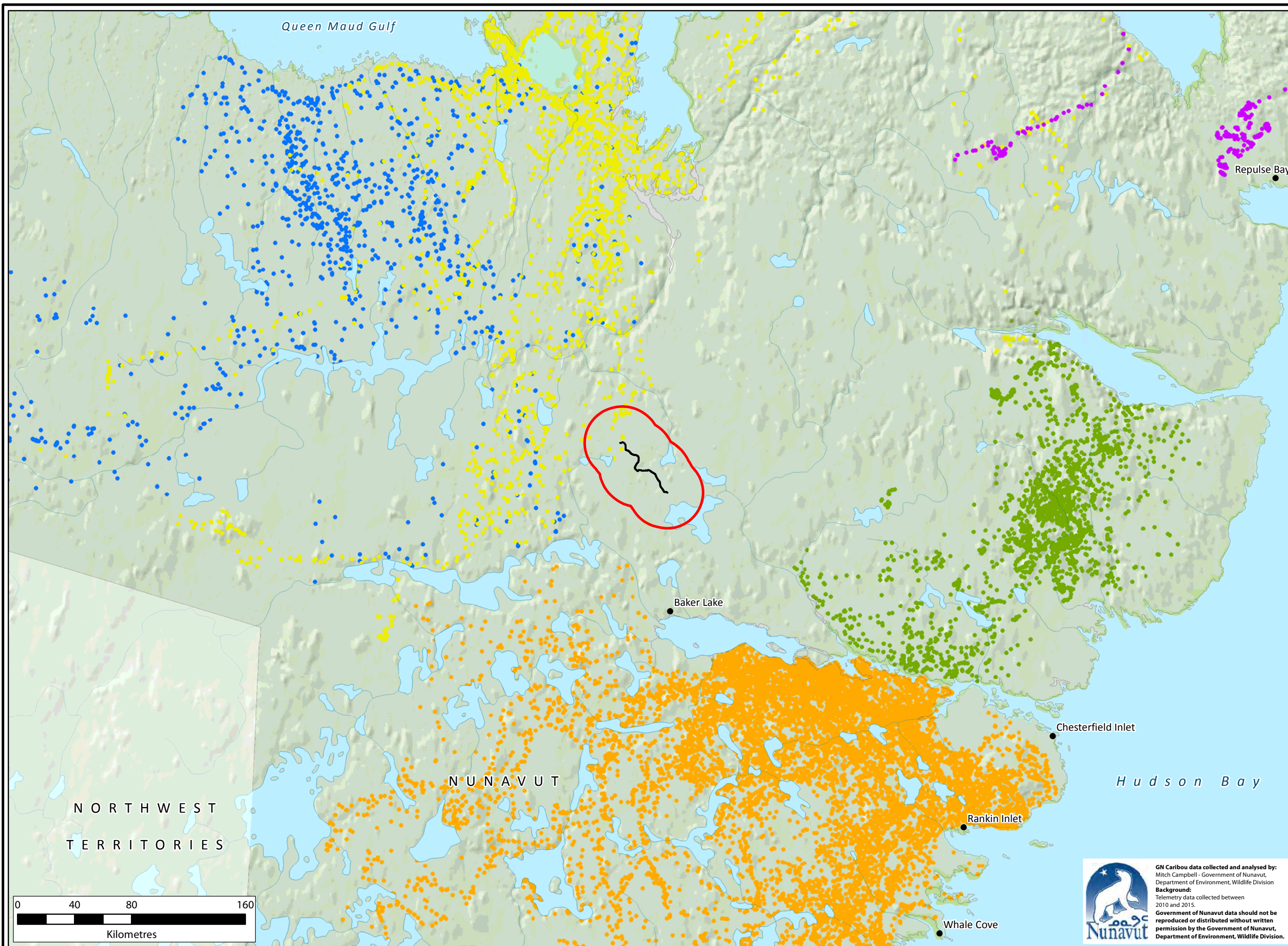
Figure:

7.3



GN Caribou data collected and analysed by:
Mitch Campbell - Government of Nunavut,
Department of Environment, Wildlife Division
Background:
Telemetry data collected between
2010 and 2015.
**Government of Nunavut data should not be
reproduced or distributed without written
permission by the Government of Nunavut,
Department of Environment, Wildlife Division.**

The information displayed on this map has been compiled from various sources. While every effort has been made to accurately depict the information, this map should not be relied on as being a precise indicator of locations, features, or roads, nor as a guide to navigation. MNR data provided by Queen's Printer of Ontario. Use of the data in any derivative product does not constitute an endorsement by the MNR or the Ontario Government of such products.



Legend

— Proposed Road

□ RSA Boundary

Telemetry Location by Herd

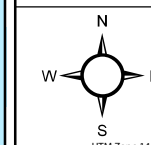
- Ahiak
- Beverly
- Lorillard
- Qamanirjuaq
- Wager Bay

Terrestrial Baseline
Characterization Report
**Post-calving Caribou
Collaring Data
(June 26 - July 31)**



PROJECT: Whale Tail Pit & Haul Road

CLIENT: Agnico Eagle Mines Limited



DATE: OCTOBER 2015

SCALE: 1:2,500,000

DRAWN BY: Caslys

CHECKED BY: MG, MAY

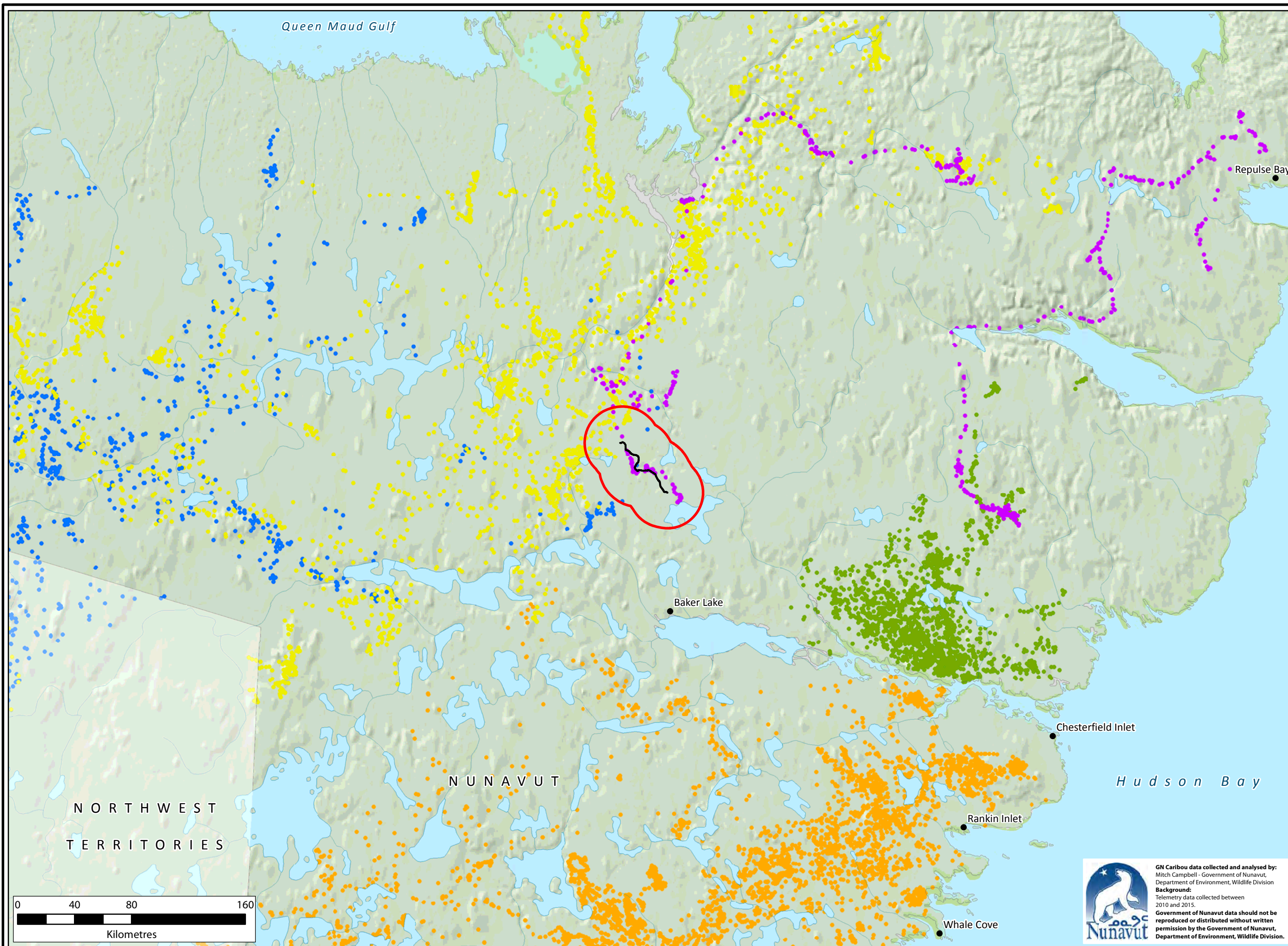
Figure:

7.4



GN Caribou data collected and analysed by:
Mitch Campbell - Government of Nunavut,
Department of Environment, Wildlife Division
Background:
Telemetry data collected between
2010 and 2015.
**Government of Nunavut data should not be
reproduced or distributed without written
permission by the Government of Nunavut,
Department of Environment, Wildlife Division.**


The information displayed on this map has been compiled from various sources. While every effort has been made to accurately depict the information, this map should not be relied on as being a precise indicator of locations, features, or roads, nor as a guide to navigation. MNR data provided by Queen's Printer of Ontario. Use of the data in any derivative product does not constitute an endorsement by the MNR or the Ontario Government of such products.




Legend
— Proposed Road
□ RSA Boundary
Telemetry Location by Herd

- Ahiak
- Beverly
- Lorillard
- Qamanirjuaq
- Wager Bay


Terrestrial Baseline
Characterization Report
**Summer Dispersal
Caribou Collaring Data
(August 1 - September 15)**



**DOUGAN
& ASSOCIATES**
ECOLOGICAL CONSULTING & DESIGN
77 Wyndham Street South • Guelph, ON N1E 5R3
T 519.822.1609 • F 519.822.5389 • www.dougan.ca



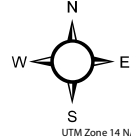
**Nunavut
ENVIRONMENTAL
CONSULTING LTD**



**CASLYS
CONSULTING**

PROJECT: Whale Tail Pit & Haul Road

CLIENT: Agnico Eagle Mines Limited



UTM Zone 14 NAD83

DATE: OCTOBER 2015

SCALE: 1:2,500,000

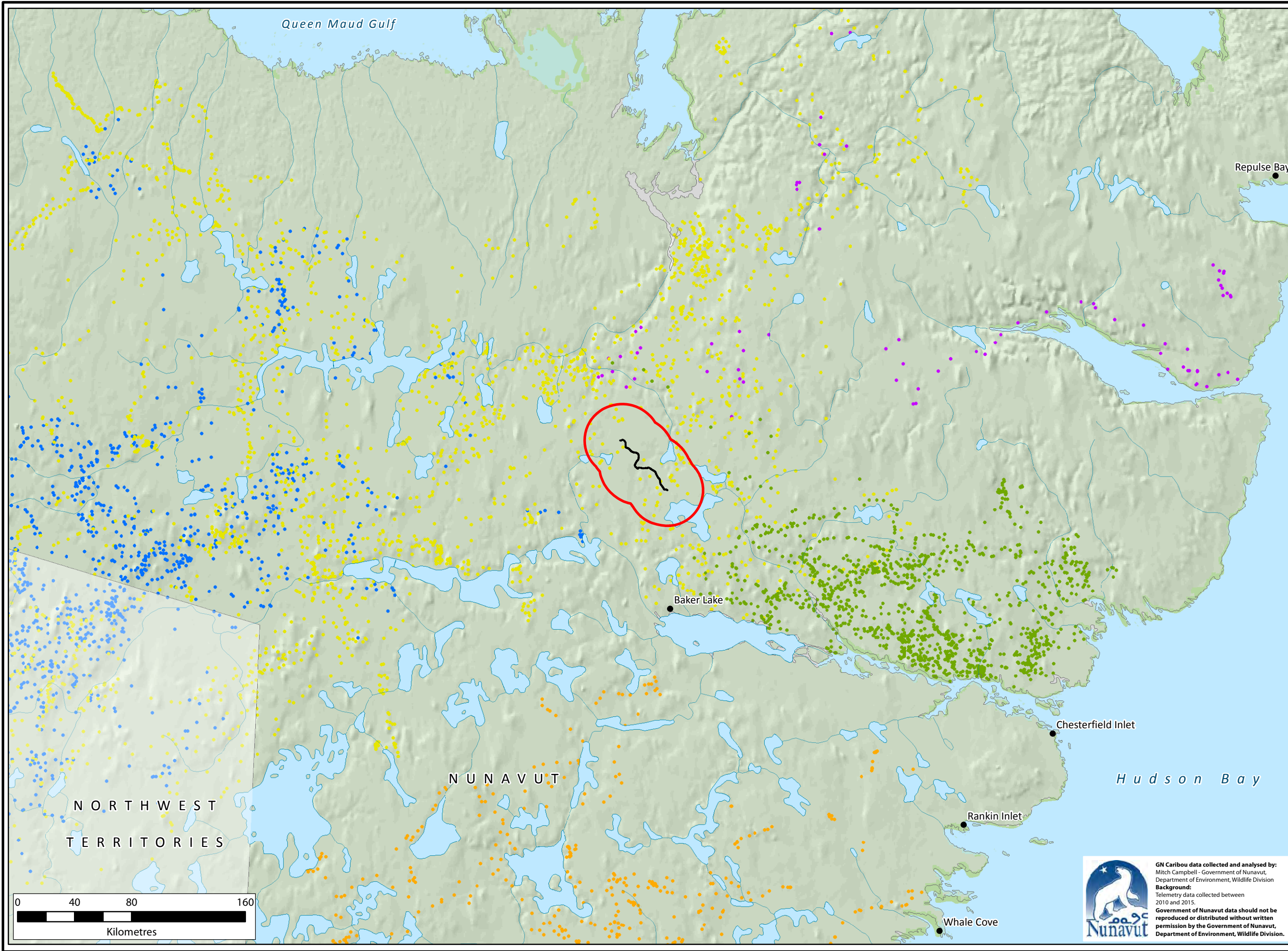
DRAWN BY: Caslys

CHECKED BY: MG, MAY

Figure:

7.5

The information displayed on this map has been compiled from various sources. While every effort has been made to accurately depict the information, this map should not be relied on as being a precise indicator of locations, features, or roads, nor as a guide to navigation. MNR data provided by Queen's Printer of Ontario. Use of the data in any derivative product does not constitute an endorsement by the MNR or the Ontario Government of such products.



Legend

— Proposed Road

□ RSA Boundary

Telemetry Location by Herd

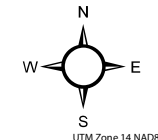
- Ahiak
- Beverly
- Lorillard
- Qamanirjuaq
- Wager Bay

Terrestrial Baseline
Characterization Report
**Rut and Fall Migration
Caribou Collaring Data**
(September 16 - November 7)



PROJECT: Whale Tail Pit & Haul Road

CLIENT: Agnico Eagle Mines Limited



DATE: OCTOBER 2015

SCALE: 1:2,500,000

DRAWN BY: Caslys

CHECKED BY: MG, MAY

Figure:

7.6



GN Caribou data collected and analysed by:
Mitch Campbell - Government of Nunavut,
Department of Environment, Wildlife Division
Background:
Telemetry data collected between
2010 and 2015.
**Government of Nunavut data should not be
reproduced or distributed without written
permission by the Government of Nunavut,
Department of Environment, Wildlife Division.**

The information displayed on this map has been compiled from various sources. While every effort has been made to accurately depict the information, this map should not be relied on as being a precise indicator of locations, features, or roads, nor as a guide to navigation. MNR data provided by Queen's Printer of Ontario. Use of the data in any derivative product does not constitute an endorsement by the MNR or the Ontario Government of such products.