



Legend
— Proposed Road
□ RSA Boundary
Telemetry Location by Herd

- Ahiak
- Beverly
- Lorillard
- Qamanirjuaq
- Wager Bay


Terrestrial Baseline
Characterization Report
**Early and Late Winter
Caribou Collaring Data
(November 8 - March 31)**



**DOUGAN
& ASSOCIATES**
ECOLOGICAL CONSULTING & DESIGN
77 Wyndham Street South • Guelph, ON N1E 5R3
T 519.822.1609 • F 519.822.5389 • www.dougan.ca

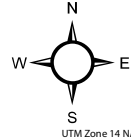


**Nunavut
ENVIRONMENTAL
CONSULTING LTD**



**CASLYS
CONSULTING**

PROJECT: Whale Tail Pit & Haul Road
CLIENT: Agnico Eagle Mines Limited



DATE: OCTOBER 2015

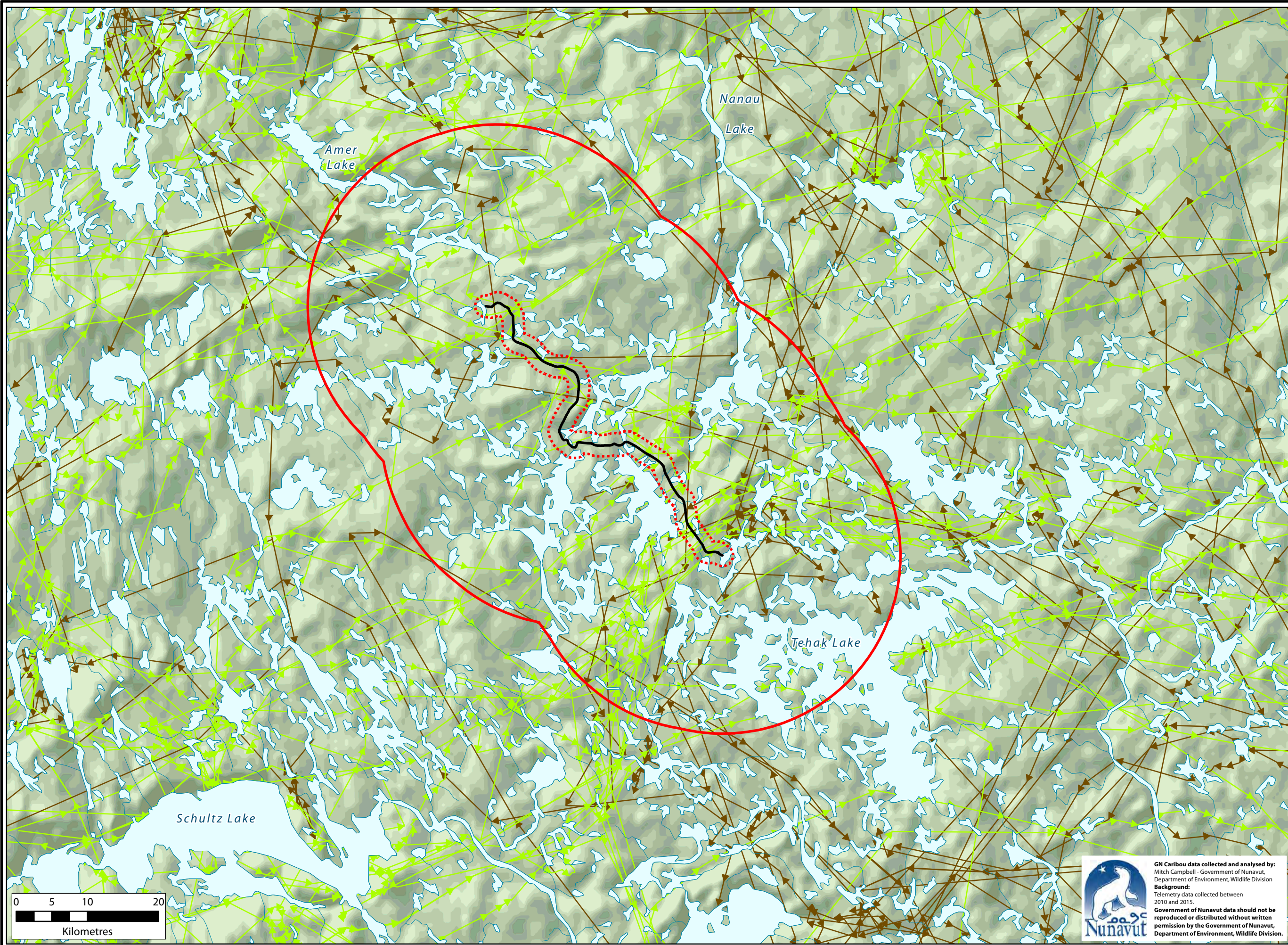
SCALE: 1:2,500,000

DRAWN BY: Caslys

CHECKED BY: MG, MAY

Figure:
7.7

The information displayed on this map has been compiled from various sources. While every effort has been made to accurately depict the information, this map should not be relied on as being a precise indicator of locations, features, or roads, nor as a guide to navigation. MNR data provided by Queen's Printer of Ontario. Use of the data in any derivative product does not constitute an endorsement by the MNR or the Ontario Government of such products.



Legend

- Proposed Road
- RSA Boundary
- LSA Boundary
- Walk Lines by Season**
- Spring
- Fall and Rut

**Terrestrial Baseline
Characterization Report
Caribou Collaring Movements**



PROJECT: Whale Tail Pit & Haul Road

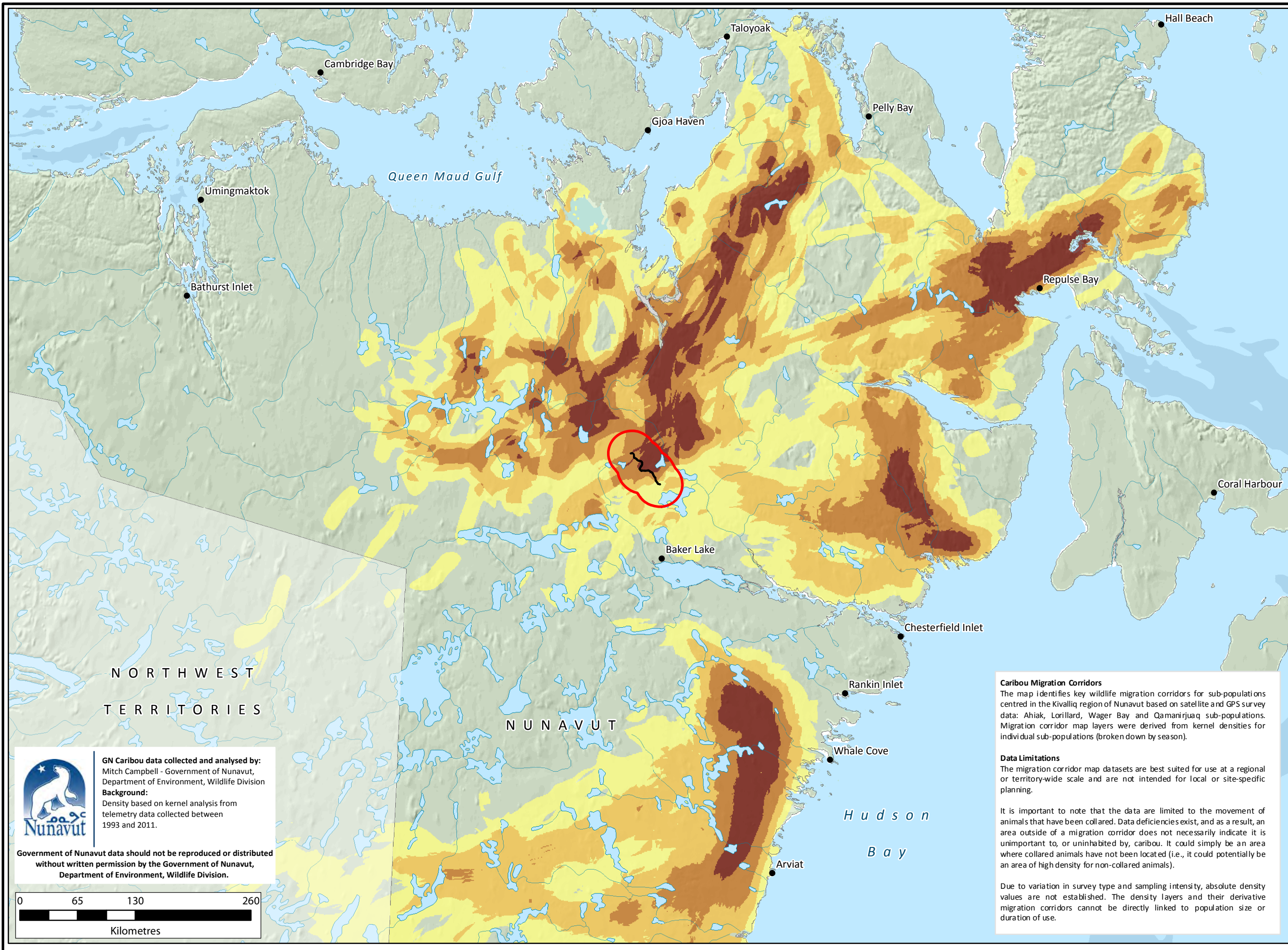
CLIENT: Agnico Eagle Mines Limited

	DATE: OCTOBER 2015
	SCALE: 1:500,000
	DRAWN BY: Caslys
	CHECKED BY: MG, MAY

Figure: **7.8**

The information displayed on this map has been compiled from various sources. While every effort has been made to accurately depict the information, this map should not be relied on as being a precise indicator of locations, features, or roads, nor as a guide to navigation. MNR data provided by Queen's Printer of Ontario. Use of the data in any derivative product does not constitute an endorsement by the MNR or the Ontario Government of such products.

 **GN Caribou data collected and analysed by:**
Mitch Campbell - Government of Nunavut,
Department of Environment, Wildlife Division
Background:
Telemetry data collected between
2010 and 2015.
**Government of Nunavut data should not be
reproduced or distributed without written
permission by the Government of Nunavut,
Department of Environment, Wildlife Division.**



Legend
— Proposed Road
□ RSA Boundary
Spring Migration Corridor
Based on Caribou Telemetry Data*

Increasing use

* Campbell, M. W., J.G. Shaw, C.A. Blyth. 2012. Kivalliq Ecological Land Classification Map Atlas: A Wildlife Perspective. Government of Nunavut, Department of Environment. Technical Report Series #1-2012. 274 pp.

Terrestrial Baseline Characterization Report
Government of Nunavut
Spring Migration Corridors
(April - June)

DOUGAN & ASSOCIATES
ECOLOGICAL CONSULTING & DESIGN
77 Wyndham Street South • Guelph, ON N1G 5R3
T 519.822.1609 • F 519.822.5389 • www.dougan.ca

Nunavut ENVIRONMENTAL CONSULTING LTD

CASLYS CONSULTING

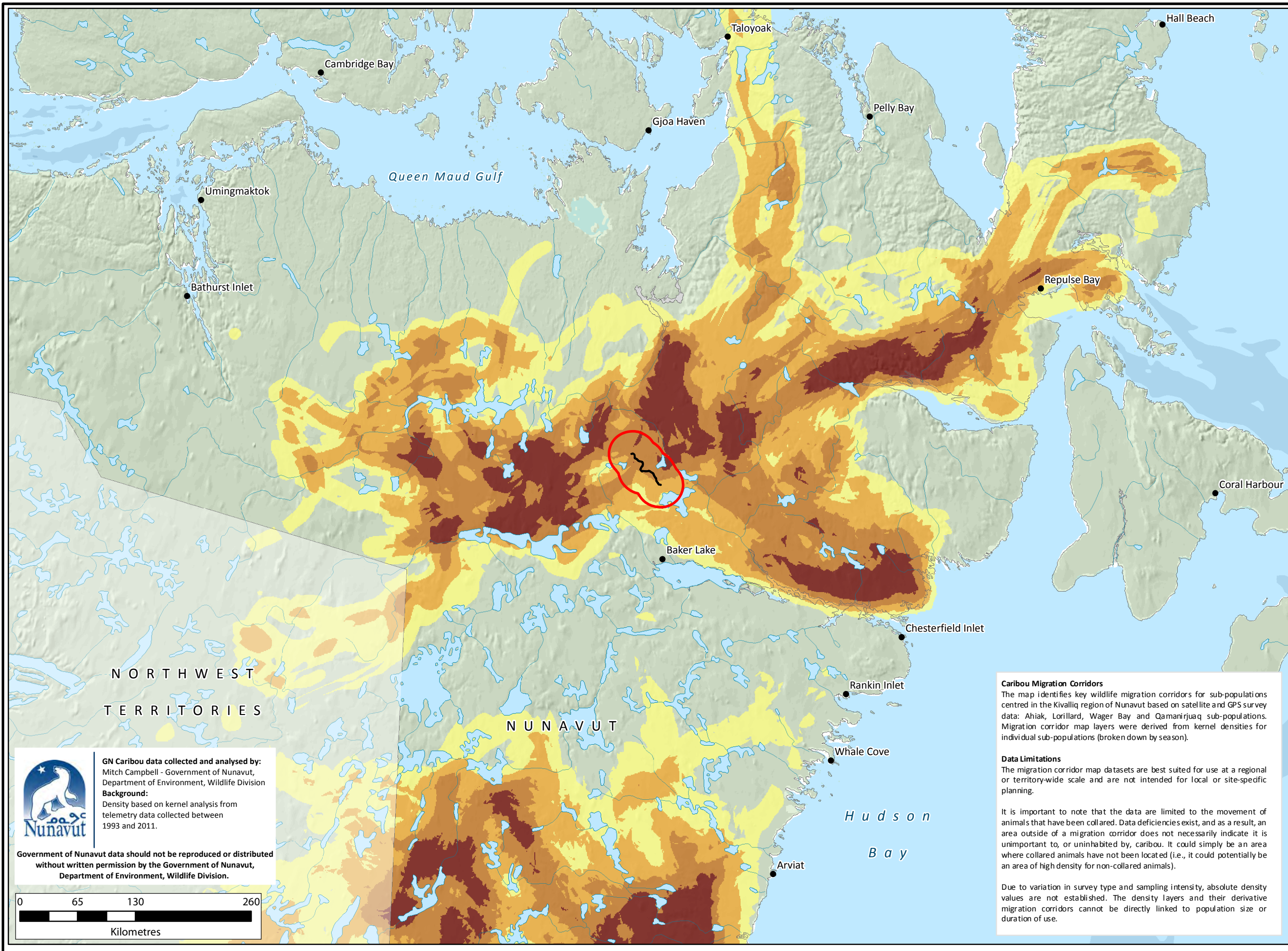
PROJECT: Whale Tail Pit & Haul Road
CLIENT: Agnico Eagle Mines Limited

UTM Zone 14 NAD83

DATE: OCTOBER 2015
SCALE: 1:4,000,000
DRAWN BY: Caslys
CHECKED BY: MG, MAY

Figure: 7.9

The information displayed on this map has been compiled from various sources. While every effort has been made to accurately depict the information, this map should not be relied on as being a precise indicator of locations, features, or roads, nor as a guide to navigation. MNR data provided by Queen's Printer of Ontario. Use of the data in any derivative product does not constitute an endorsement by the MNR or the Ontario Government of such products.



Legend
— Proposed Road
□ RSA Boundary
Fall Migration Corridor
Based on Caribou Telemetry Data*

Increasing use

* Campbell, M. W., J.G. Shaw, C.A. Blyth. 2012. Kivalliq Ecological Land Classification Map Atlas: A Wildlife Perspective. Government of Nunavut, Department of Environment. Technical Report Series #1-2012. 274 pp.

Terrestrial Baseline
Characterization Report
Government of Nunavut
Fall Migration Corridors
(September - November)

DOUGAN & ASSOCIATES
ECOLOGICAL CONSULTING & DESIGN
77 Wyndham Street South • Guelph, ON N1E 5R3
T 519.822.1609 • F 519.822.5389 • www.dougan.ca

Nunavut ENVIRONMENTAL CONSULTING LTD

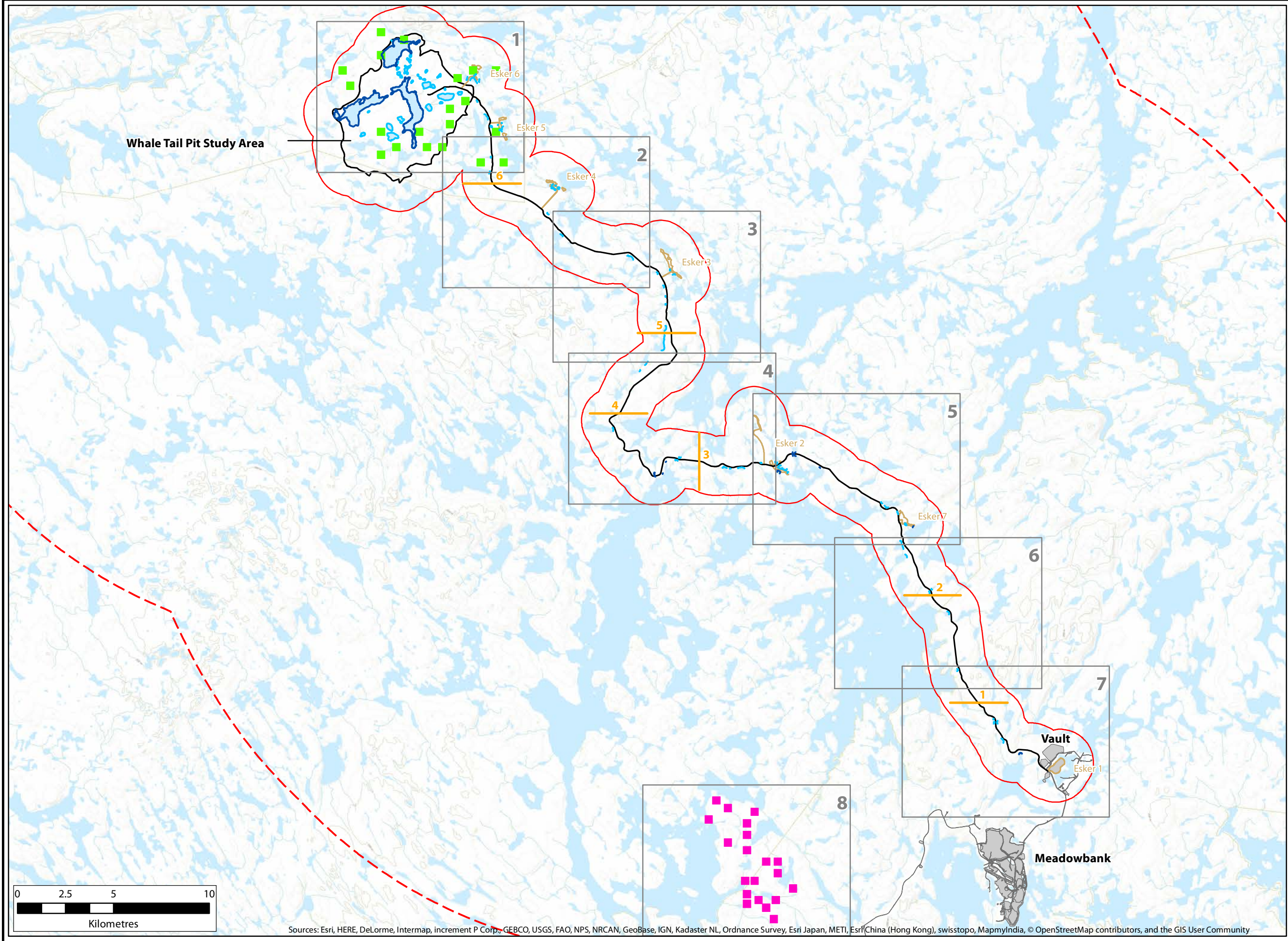
CASLYS CONSULTING

PROJECT: Whale Tail Pit & Haul Road
CLIENT: Agnico Eagle Mines Limited

	DATE: OCTOBER 2015
	SCALE: 1:4,000,000
	DRAWN BY: Caslys
	CHECKED BY: MG, MAY

Figure:
7.10

The information displayed on this map has been compiled from various sources. While every effort has been made to accurately depict the information, this map should not be relied on as being a precise indicator of locations, features, or roads, nor as a guide to navigation. MNR data provided by Queen's Printer of Ontario. Use of the data in any derivative product does not constitute an endorsement by the MNR or the Ontario Government of such products.



Legend

- Breeding Bird Transect
- PRISM Plot**
 - Whale Tail
 - Control
- Waterfowl Transect**
 - Lake
 - Pond
- Map Base**
 - Esker or Esker Access Road
 - Proposed Haul Road (AEM, Nov. 2015)
 - Wildlife Survey Locations
 - Figure Extent
 - Mine Site
 - Road
 - LSA Boundary
 - RSA Boundary
 - Whale Tail Pit Study Area

Terrestrial Baseline Characterization Report
2015 Wildlife Survey Locations

DOUGAN & ASSOCIATES
ECOLOGICAL CONSULTING & DESIGN
77 Wyndham Street South • Guelph, ON N1E 5R3
T 519.822.1609 • F 519.822.5389 • www.dougan.ca

Nunavut ENVIRONMENTAL CONSULTING LTD

PROJECT: Whale Tail Pit & Haul Road

CLIENT: Agnico Eagle Mines Limited

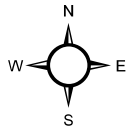
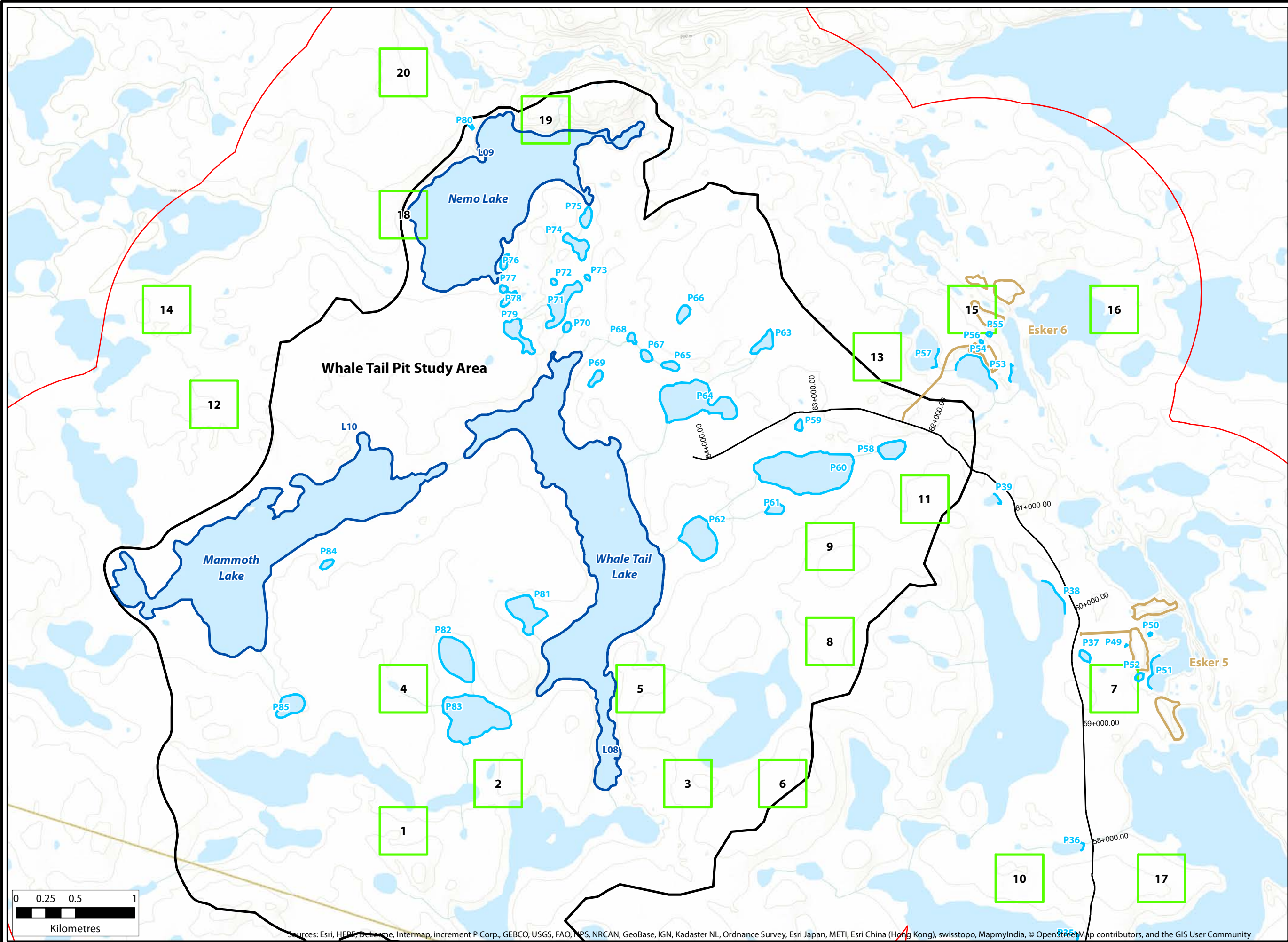
 UTM Zone 14 NAD83	DATE: NOVEMBER 2015
	SCALE: 1:185,000
	DRAWN BY: LC
	CHECKED BY: MAY

Figure:
8 - Key Map

The information displayed on this map has been compiled from various sources. While every effort has been made to accurately depict the information, this map should not be relied on as being a precise indicator of locations, features, or roads, nor as a guide to navigation. MNR data provided by Queen's Printer of Ontario. Use of the data in any derivative product does not constitute an endorsement by the MNR or the Ontario Government of such products.



Legend

Waterfowl Transect

- Lake
- Pond

PRISM Plot

- Whale Tail

Map Base

- Esker or Esker Access Road
- Proposed Haul Road (AEM, Nov. 2015)
- LSA Boundary
- RSA Boundary
- Whale Tail Pit Study Area

Terrestrial Baseline Characterization Report
2015 Wildlife Survey Locations

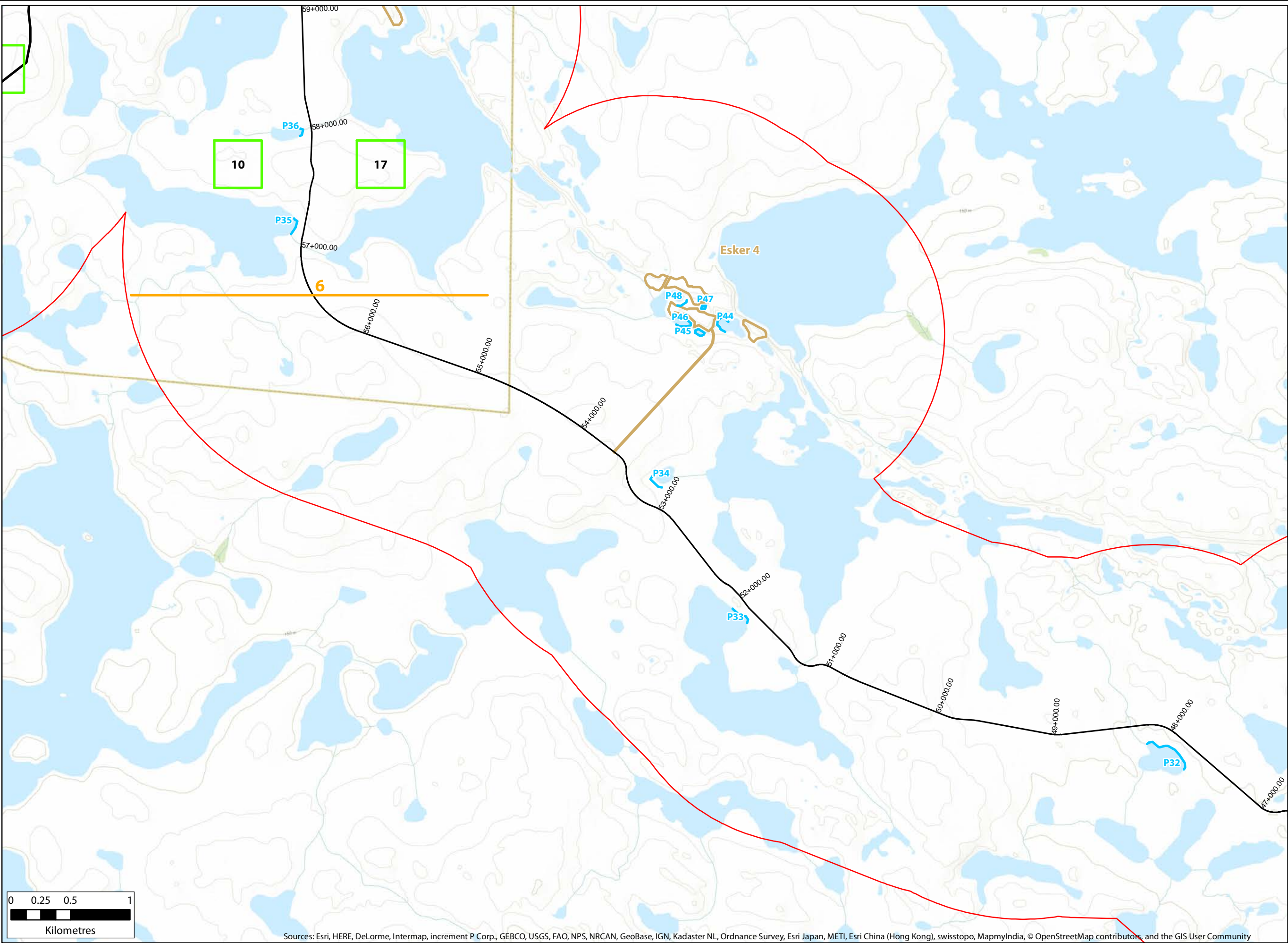
DOUGAN & ASSOCIATES
ECOLOGICAL CONSULTING & DESIGN
77 Wyndham Street South • Guelph, ON N1E 5R3
T 519.822.1609 • F 519.822.5389 • www.dougan.ca

Nunavut ENVIRONMENTAL CONSULTING LTD

PROJECT: Whale Tail Pit & Haul Road	
CLIENT: Agnico Eagle Mines Limited	
	DATE: NOVEMBER 2015
	SCALE: 1:30,000
	DRAWN BY: LC
	CHECKED BY: MAY

Figure: 8.1

The information displayed on this map has been compiled from various sources. While every effort has been made to accurately depict the information, this map should not be relied on as being a precise indicator of locations, features, or roads, nor as a guide to navigation. MNR data provided by Queen's Printer of Ontario. Use of the data in any derivative product does not constitute an endorsement by the MNR or the Ontario Government of such products.



Legend

Breeding Bird Transect

Waterfowl Transect

Pond

PRISM Plot

Whale Tail

Map Base

Esker or Esker Access Road

Proposed Haul Road
(AEM, Nov. 2015)

LSA Boundary

RSA Boundary

Whale Tail Pit Study Area

Terrestrial Baseline Characterization Report
2015 Wildlife Survey Locations

DOUGAN & ASSOCIATES
ECOLOGICAL CONSULTING & DESIGN
77 Wyndham Street South • Guelph, ON N1E 5R3
T 519.822.1609 • F 519.822.5389 • www.dougan.ca

Nunavut ENVIRONMENTAL CONSULTING LTD

PROJECT: Whale Tail Pit & Haul Road

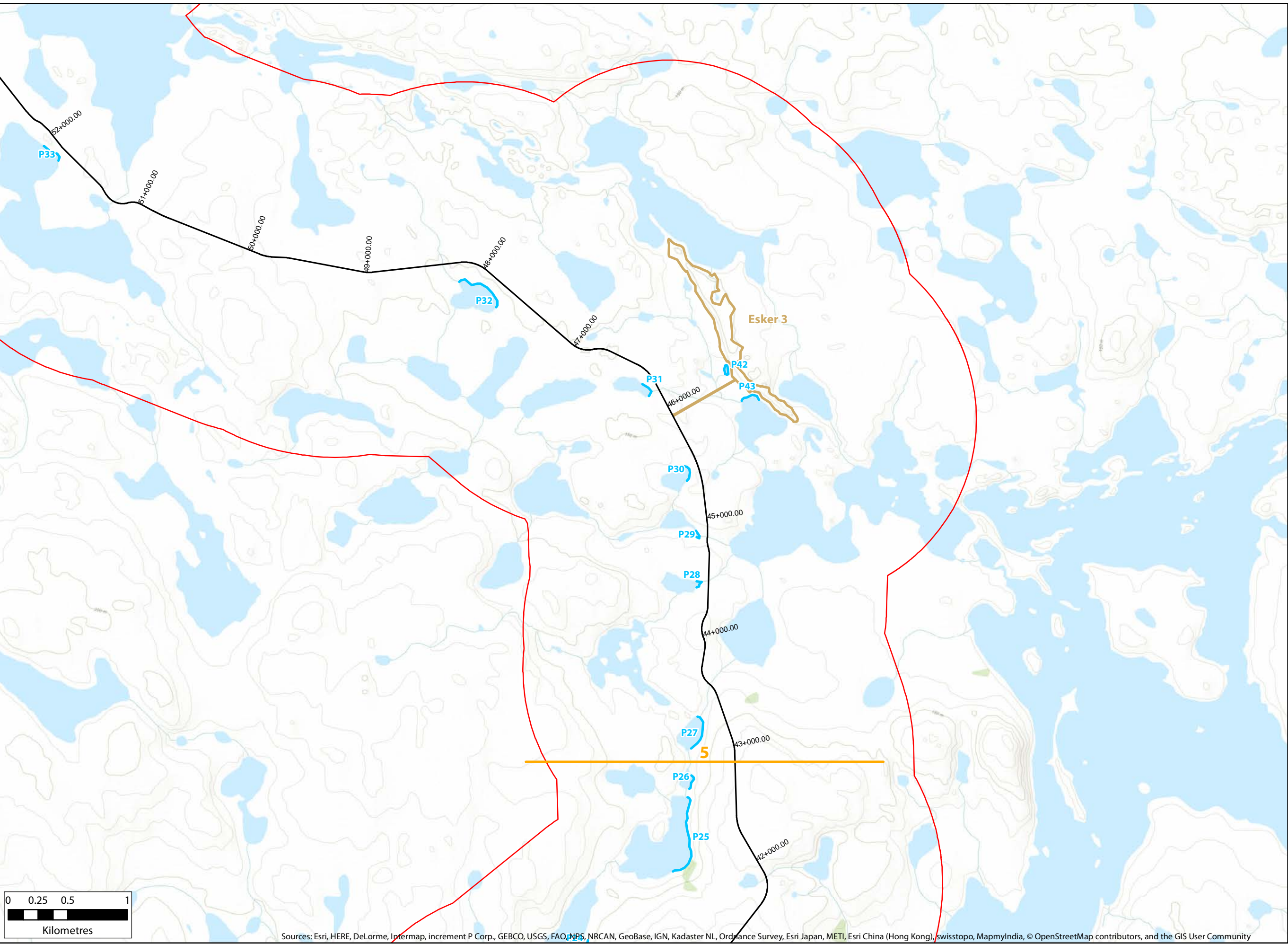
CLIENT: Agnico Eagle Mines Limited

	DATE: NOVEMBER 2015
	SCALE: 1:30,000
	DRAWN BY: LC
	CHECKED BY: MAY

Figure:
8.2

The information displayed on this map has been compiled from various sources. While every effort has been made to accurately depict the information, this map should not be relied on as being a precise indicator of locations, features, or roads, nor as a guide to navigation. MNR data provided by Queen's Printer of Ontario. Use of the data in any derivative product does not constitute an endorsement by the MNR or the Ontario Government of such products.

Sources: Esri, HERE, DeLorme, Intermap, increment P Corp., GEBCO, USGS, FAO, NPS, NRCAN, GeoBase, IGN, Kadaster NL, Ordnance Survey, Esri Japan, METI, Esri China (Hong Kong), swisstopo, MapmyIndia, © OpenStreetMap contributors, and the GIS User Community



Sources: Esri, HERE, DeLorme, Intermap, increment P Corp., GEBCO, USGS, FAO, NPS, NRCAN, GeoBase, IGN, Kadaster NL, Ordnance Survey, Esri Japan, METI, Esri China (Hong Kong), swisstopo, MapmyIndia, © OpenStreetMap contributors, and the GIS User Community

Legend

— Breeding Bird Transect

Waterfowl Transect

— Pond

Map Base

— Esker or Esker Access Road

— Proposed Haul Road
(AEM, Nov. 2015)

□ LSA Boundary

□ RSA Boundary

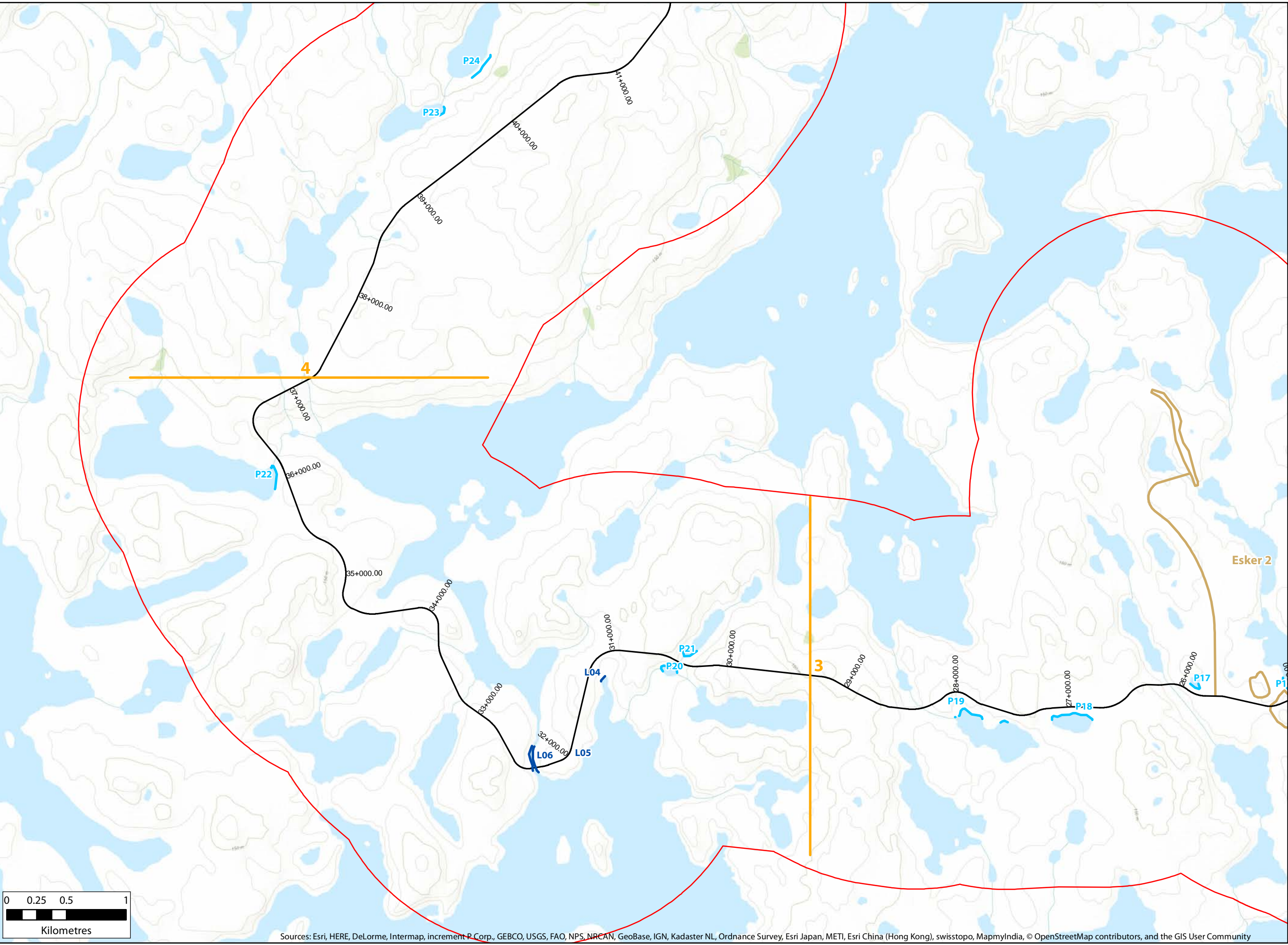
Terrestrial Baseline Characterization Report
2015 Wildlife Survey Locations



CLIENT: Agnico Eagle Mines Limited	
	DATE: NOVEMBER 2015
	SCALE: 1:30,000
	DRAWN BY: LC
	CHECKED BY: MAY

Figure:
8.3

The information displayed on this map has been compiled from various sources. While every effort has been made to accurately depict the information, this map should not be relied on as being a precise indicator of locations, features, or roads, nor as a guide to navigation. MNR data provided by Queen's Printer of Ontario. Use of the data in any derivative product does not constitute an endorsement by the MNR or the Ontario Government of such products.



Legend

Breeding Bird Transect

Waterfowl Transect

Lake

Pond

Map Base

Esker or Esker Access Road

Proposed Haul Road
(AEM, Nov. 2015)

LSA Boundary

RSA Boundary

Terrestrial Baseline Characterization Report
2015 Wildlife Survey Locations



DOUGAN & ASSOCIATES
ECOLOGICAL CONSULTING & DESIGN
77 Wyndham Street South • Guelph, ON N1E 5R3
T 519.822.1609 • F 519.822.5389 • www.dougan.ca



PROJECT: Whale Tail Pit & Haul Road

CLIENT: Agnico Eagle Mines Limited

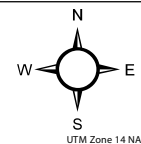
	DATE: NOVEMBER 2015
	SCALE: 1:30,000
	DRAWN BY: LC
	CHECKED BY: MAY

Figure:
8.4

The information displayed on this map has been compiled from various sources. While every effort has been made to accurately depict the information, this map should not be relied on as being a precise indicator of locations, features, or roads, nor as a guide to navigation. MNR data provided by Queen's Printer of Ontario. Use of the data in any derivative product does not constitute an endorsement by the MNR or the Ontario Government of such products.



Legend

Waterfowl Transect

- Lake
- Pond

Map Base

- Esker or Esker Access Road
- Proposed Haul Road
(AEM, Nov. 2015)
- LSA Boundary
- RSA Boundary

Terrestrial Baseline Characterization Report
2015 Wildlife Survey Locations



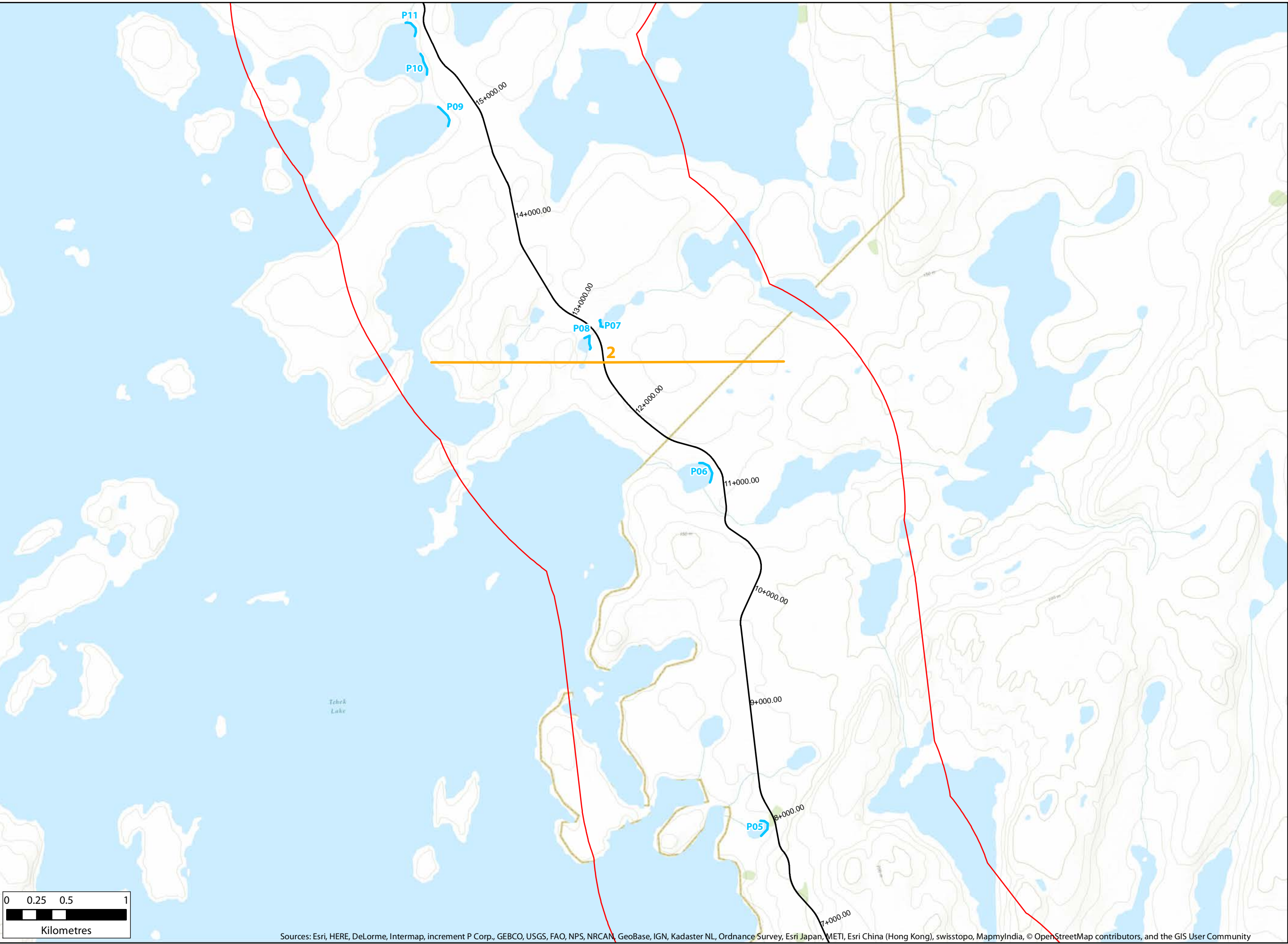
PROJECT: Whale Tail Pit & Haul Road

CLIENT: Agnico Eagle Mines Limited

	DATE: NOVEMBER 2015
	SCALE: 1:30,000
	DRAWN BY: LC
	CHECKED BY: MAY

Figure:
8.5

The information displayed on this map has been compiled from various sources. While every effort has been made to accurately depict the information, this map should not be relied on as being a precise indicator of locations, features, or roads, nor as a guide to navigation. MNR data provided by Queen's Printer of Ontario. Use of the data in any derivative product does not constitute an endorsement by the MNR or the Ontario Government of such products.



Legend

Breeding Bird Transect

Waterfowl Transect

Pond

Map Base

Esker or Esker Access Road

Proposed Haul Road
(AEM, Nov. 2015)

LSA Boundary

RSA Boundary

Terrestrial Baseline Characterization Report
2015 Wildlife Survey Locations



DOUGAN & ASSOCIATES
ECOLOGICAL CONSULTING & DESIGN

77 Wyndham Street South • Guelph, ON N1E 5R3
T 519.822.1609 • F 519.822.5389 • www.dougan.ca



Nunavut ENVIRONMENTAL CONSULTING LTD

PROJECT: Whale Tail Pit & Haul Road

CLIENT: Agnico Eagle Mines Limited

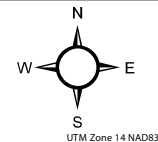
	DATE: NOVEMBER 2015
	SCALE: 1:30,000
	DRAWN BY: LC
	CHECKED BY: MAY

Figure:
8.6

The information displayed on this map has been compiled from various sources. While every effort has been made to accurately depict the information, this map should not be relied on as being a precise indicator of locations, features, or roads, nor as a guide to navigation. MNR data provided by Queen's Printer of Ontario. Use of the data in any derivative product does not constitute an endorsement by the MNR or the Ontario Government of such products.